

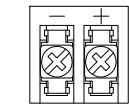
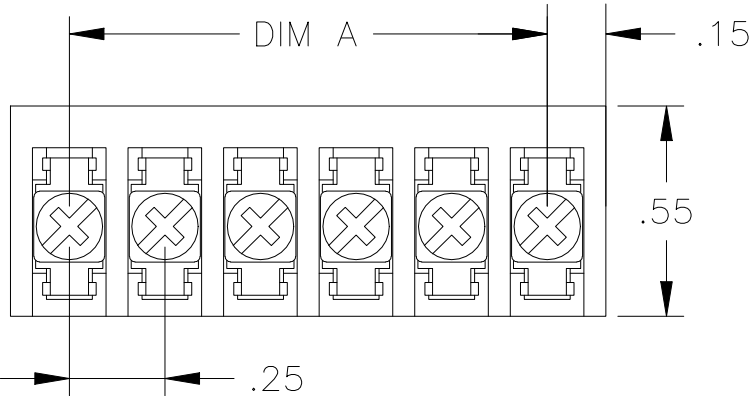
REVISIONS					
P	LTR	DESCRIPTION	DATE	DWN	APVD
	F2	UPDATING WIRE RANGE TO 30-16 AWG AND CHANGING THE CONTACT LENGTH FROM 0.185 TO 0.169	01AUG2023	SP	PS

MATERIAL:  
HOUSING: THERMOPLASTIC, UL94V-0, BLACK.  
TERMINAL: M3 THREAD, BRIGHT TIN PLATED,  
COPPER ALLOY.  
SCREWS: M3 THREAD ZINC PLATED STEEL,  
EXCEPT WHERE OTHERWISE NOTED.

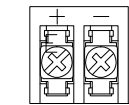
ELECTRICAL:  
RATED CURRENT: 10A.  
OPERATING VOLTAGE: 300V.  
WIRE RANGE: 16-30AWG .

MECHANICAL:  
PITCH (TERMINAL SPACING): .250"  
OPERATING TEMP.: 120°C MAX.

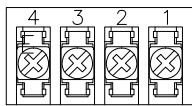
- 1 SEE FIGURE.
- 2 M3 SCREWS, ZINC PLATED STEEL AND M3 THREADED TERMINAL.
- 3 RUNNING TORQUE: 4 IN-LB MAX.
- 4 OBSOLETE PARTS: OBSOLETE CIS STREAMLINING PER D.RENAUD/D.SINISI



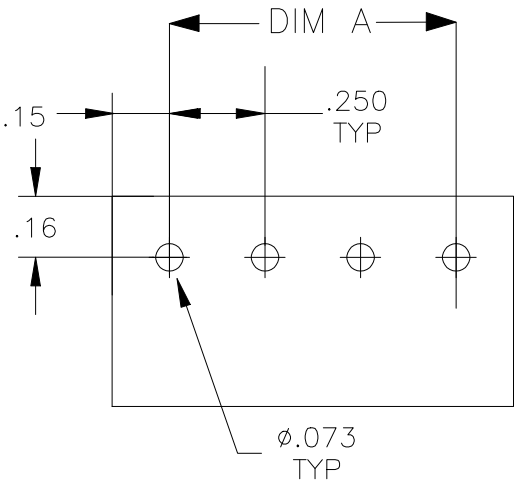
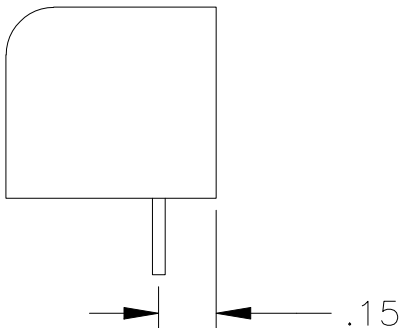
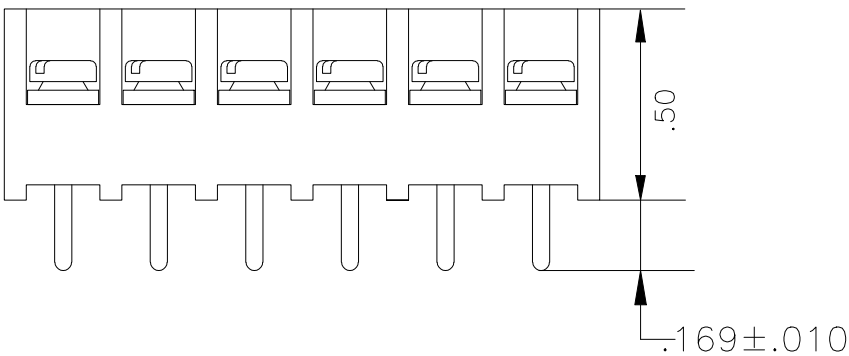
-2 1546119 1-



-2 1546119 2-




-2 796988 7-



RECOMMENDED PCB LAYOUT

4	.25	2	3PCV-02-006-SPL	<del>796597-3</del>
	7.25	30	3PCV-30-006	4-1546119-3
	7.00	29	3PCV-29-006	2-1546533-9
	6.75	28	3PCV-28-006	2-1546533-8
	6.50	27	3PCV-27-006	2-1546533-7
	6.25	26	3PCV-26-006	4-1546119-2
	6.00	25	3PCV-25-006	2-1546533-5
	5.75	24	3PCV-24-006	4-1546119-1
	5.50	23	3PCV-23-006	2-1546533-3
4	5.25	22	3PCV-22-006	<del>3-1546119-9</del>
	5.00	21	3PCV-21-006	2-1546533-1
2	4.75	20	3PCV-20-308	796597-2
	4.75	20	3PCV-20-006	796597-1
	4.50	19	3PCV-19-006	1-1546533-9
	4.25	18	3PCV-18-006	3-1546119-7
4	4.00	17	3PCV-17-006	<del>3-1546119-6</del>
	3.75	16	3PCV-16-006	7-1437646-8
	3.50	15	3PCV-15-006	7-1437646-5
	3.25	14	3PCV-14-006	7-1437646-3
	3.00	13	3PCV-13-006	3-1546119-2
	2.75	12	3PCV-12-006	6-1437646-7
	2.50	11	3PCV-11-006	2-1546119-9
	2.25	10	3PCV-10-006	6-1437646-2
	2.00	9	3PCV-09-006	5-1437646-9
	1.75	8	3PCV-08-006	5-1437646-7
	1.50	7	3PCV-07-006	5-1437646-4
	1.25	6	3PCV-06-006	5-1437646-0
	1.00	5	3PCV-05-006	4-1437646-5
4 1	.75	4	3PCV-04-006-SPL	<del>2-796988-7</del>
	.75	4	3PCV-04-006	4-1437646-2
	.50	3	3PCV-03-006	3-1437646-9
4 1	.25	2	3PCV-02-297	<del>2-1546119-2</del>
4 1	.25	2	3PCV-02-296	<del>2-1546119-1</del>
	.25	2	3PCV-02-006	3-1437646-3
DIM. "A"		NO. OF POS.	CATALOG NUMBER	PART NO.

THIS DRAWING IS A CONTROLLED DOCUMENT.		DWN S SCHLEGEL 24MAR2003	 TE Connectivity Ltd.		
		CHK S YODER 24MAR2003			
		APVD S YODER 24MAR2003	NAME 3PCV-XX-006 ASSEMBLY		
DIMENSIONS: INCHES		PRODUCT SPEC			
		APPLICATION SPEC			
		WEIGHT	SIZE A3	CAGE CODE 00779	DRAWING NO C-4-1437646-2
MATERIAL		FINISH	RESTRICTED TO		
			CUSTOMER DRAWING		
			SCALE 1	SHEET 1 OF 1	REV F2

# Mouser Electronics

Authorized Distributor

Click to View Pricing, Inventory, Delivery & Lifecycle Information:

[TE Connectivity:](#)

[3PCV-17-006](#)