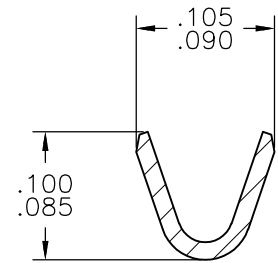
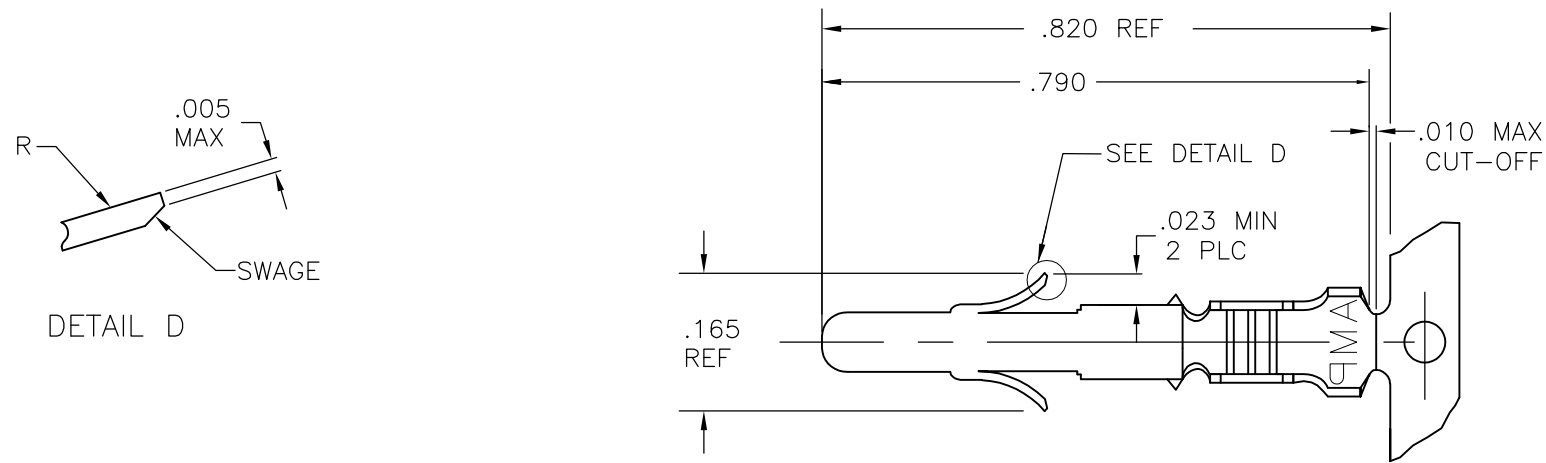
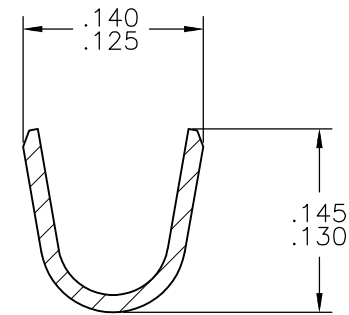
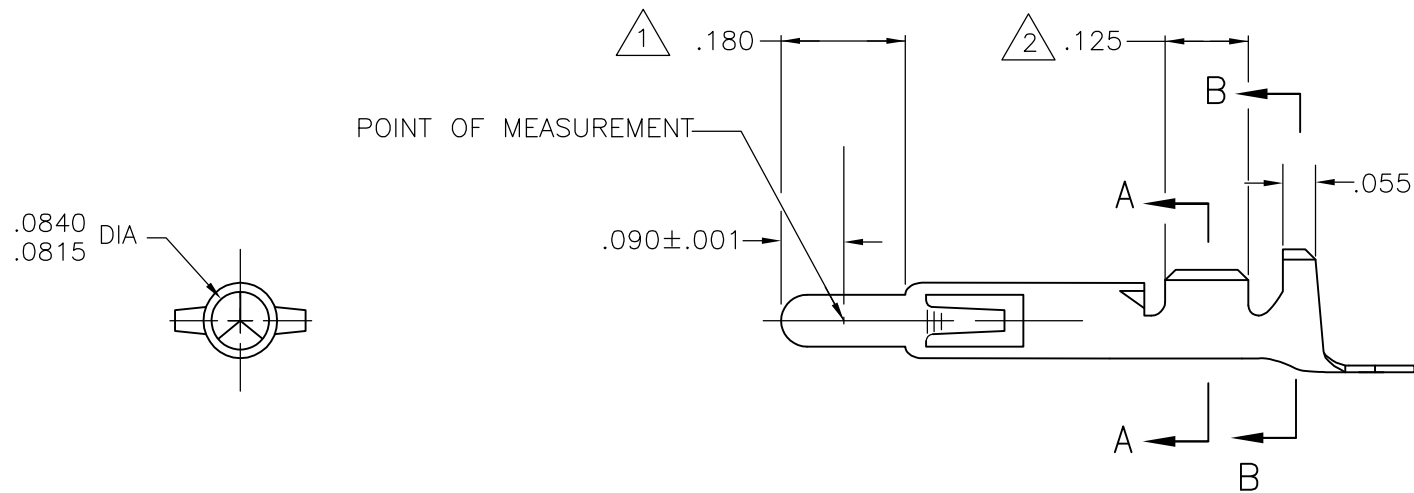


LOC	DIST	REVISIONS				
		P	LTR	DESCRIPTION	DATE	DWN
CM	00		Z	REVISED PER ECR-12-013323	10AUG2012	KH
			Z1	REVISED PER ECR-14-008840	08JUL2014	AV

APVD	TM	KD
------	----	----




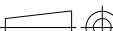
SECTION A-A



SECTION B-B

- 1 PLATED WITH .000030 GOLD, OVER .000050 NICKEL UNDERPLATE.
- 2 PLATED INTERNALLY WITH .000030 GOLD.
- 3 WIRE RANGE: 24-18 AWG AND INSULATION RANGE: .040-.100 DIA.

350690-7	GOLD	1	.012 BRASS	350561-7
350690-3	PRE-TIN		.012 PH. BRZ.	350561-3
350690-2	GOLD	1 2	.012 BRASS	350561-2
350690-1	PRE-TIN			350561-1
LOOSE PIECE (REF)		FINISH		MATERIAL
				PART NUMBER

THIS DRAWING IS A CONTROLLED DOCUMENT.		DWN	M.FEHER	05JUN81	 TE Connectivity											
		CHK	DSH	09JUN81												
DIMENSIONS: INCHES		APVD	RPL	10JUN81	NAME PIN, UNIVERSAL MATE-N-LOK											
		PRODUCT SPEC														
		108-1031														
		APPLICATION SPEC														
		114-1010			SIZE	CAGE CODE	DRAWING NO	RESTRICTED TO								
MATERIAL		FINISH			WEIGHT	A2 00779		C=350561		—						
					CUSTOMER DRAWING				SCALE	4:1		SHEET	1 of 1		REV	Z1

Mouser Electronics

Authorized Distributor

Click to View Pricing, Inventory, Delivery & Lifecycle Information:

[TE Connectivity:](#)

[350561-1 \(Mouser Reel\)](#) [350561-1 \(Cut Strip\)](#)