

D

D

C

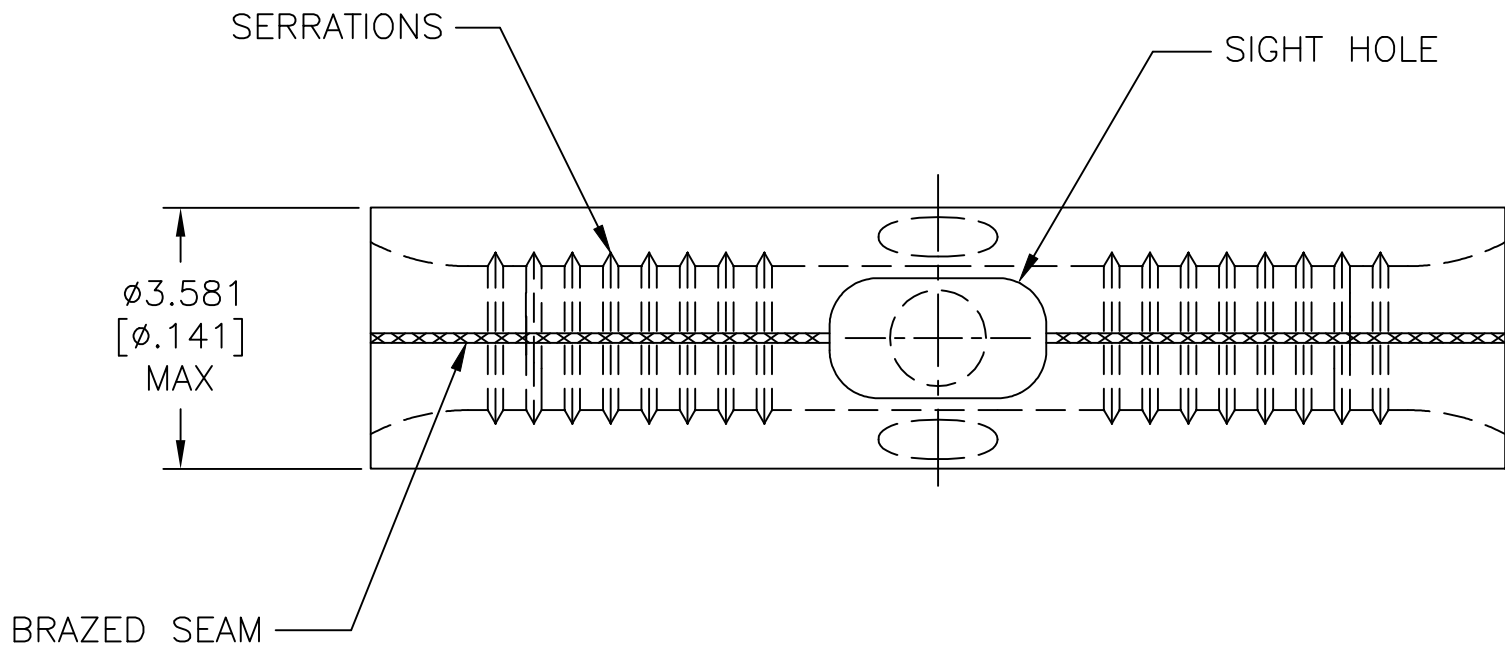
C

B

B

A

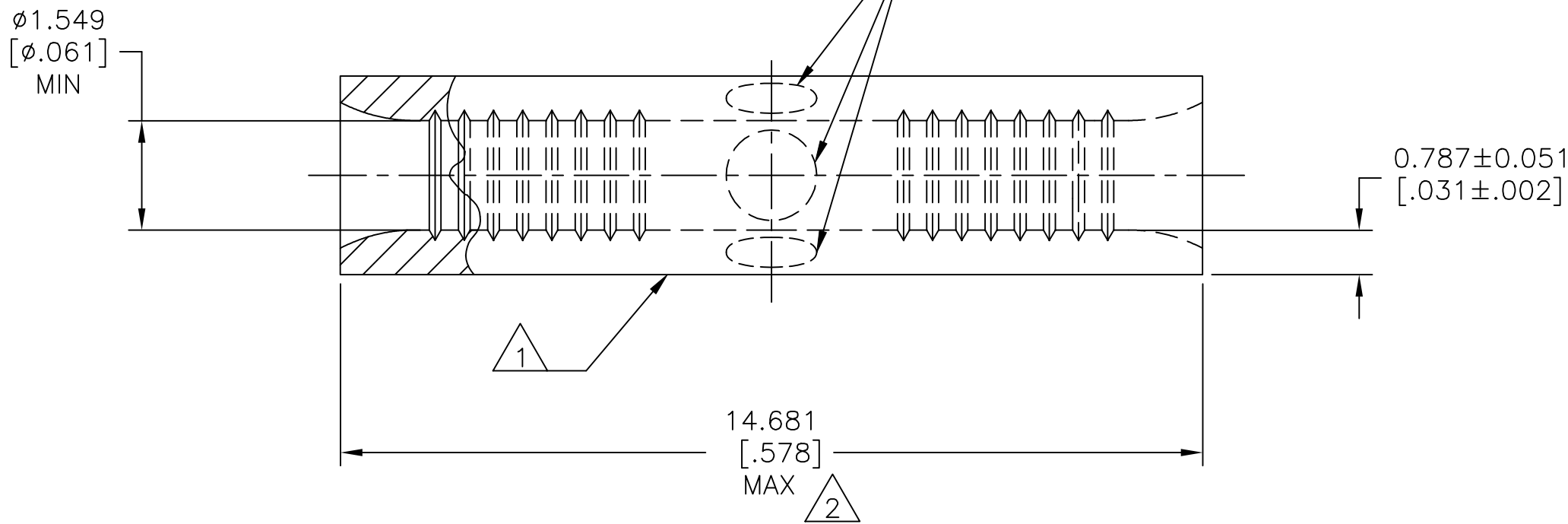
A



<b>AMP</b> WIRE RANGE	E13288 Listed
22-16 AWG SOLID OR STRANDED	22-16 AWG SOLID OR STRANDED

LR7189 Certified	MILITARY P/N AND CLASS
22-16 AWG SOLID OR STRANDED	NOT APPLICABLE

- 1
- STAMP AMP 22-18\* APPROX AS SHOWN  
22-16 SPLICES ARE STAMPED 22-18 IN  
ACCORDANCE WITH MILITARY SPEC SAE AS7928  
COMMERCIAL WIRE RANGE IS 22-16.
- 2
- MAXIMUM LENGTH DOES NOT INCLUDE  
MANUFACTURING TABS.



AMP INCORPORATED CUSTOMER SERVICE SYSTEMS		
FOR ADDITIONAL PRODUCT INFORMATION OR COPIES OF DRAWINGS AND TECHNICAL DOCUMENTS	PRODUCT INFORMATION CENTER 1-800-522-6752	MAX RECOMMENDED OPERATING TEMPERATURE: 170°C [338°F] MAX
FOR APPLICATION TOOLING INFORMATION	TOOLING ASSISTANCE CENTER 1-800-722-1111	VOLTAGE RATING: NOT APPLICABLE
FOR ORDER ENTRY	1-800-526-5142	WIRE CROSS SECTIONAL AREA RANGE, 0.26-1.65mm²[509-3,260] CIR MILS SOLID OR STRANDED

THIS DRAWING IS A CONTROLLED DOCUMENT.		DWN NAGALAKSHMI K 28JUN2016	TE Connectivity Ltd.			
DIMENSIONS: mm [INCHES]		CHK ROHDE DANIEL F 28JUN2016				
		APVD ROHDE DANIEL F 28JUN2016	NAME			
		PRODUCT SPEC UL 486 A-B	SPLICE, BUTT, W/ SIGHT HOLE, SOLISTRAND™ 22-16 AWG			
MATERIAL COPPER PER ASTM B-152 ANNEALED		FINISH TIN PLATE 0.00254[.000100] MIN THK PER ASTM B545	WEIGHT	SIZE A2	CAGE CODE 00779	DRAWING NO C=330367
CUSTOMER DRAWING				RESTRICTED TO —	SCALE 10:1	
				SHEET 1 OF 1	REV D4	

# Mouser Electronics

Authorized Distributor

Click to View Pricing, Inventory, Delivery & Lifecycle Information:

[TE Connectivity:](#)

[330367-2](#)