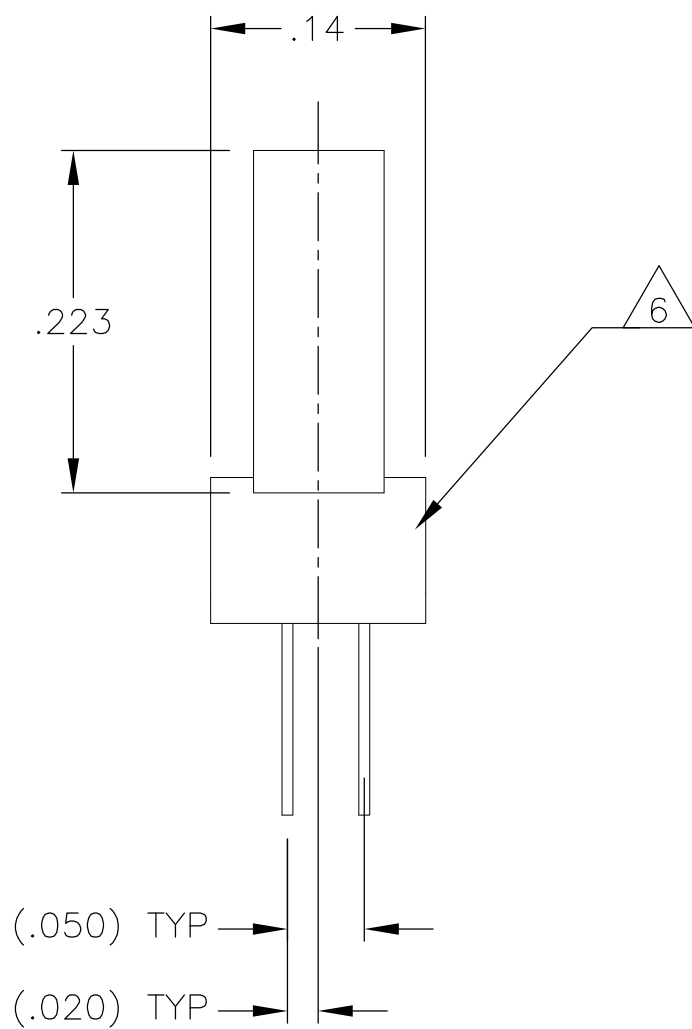
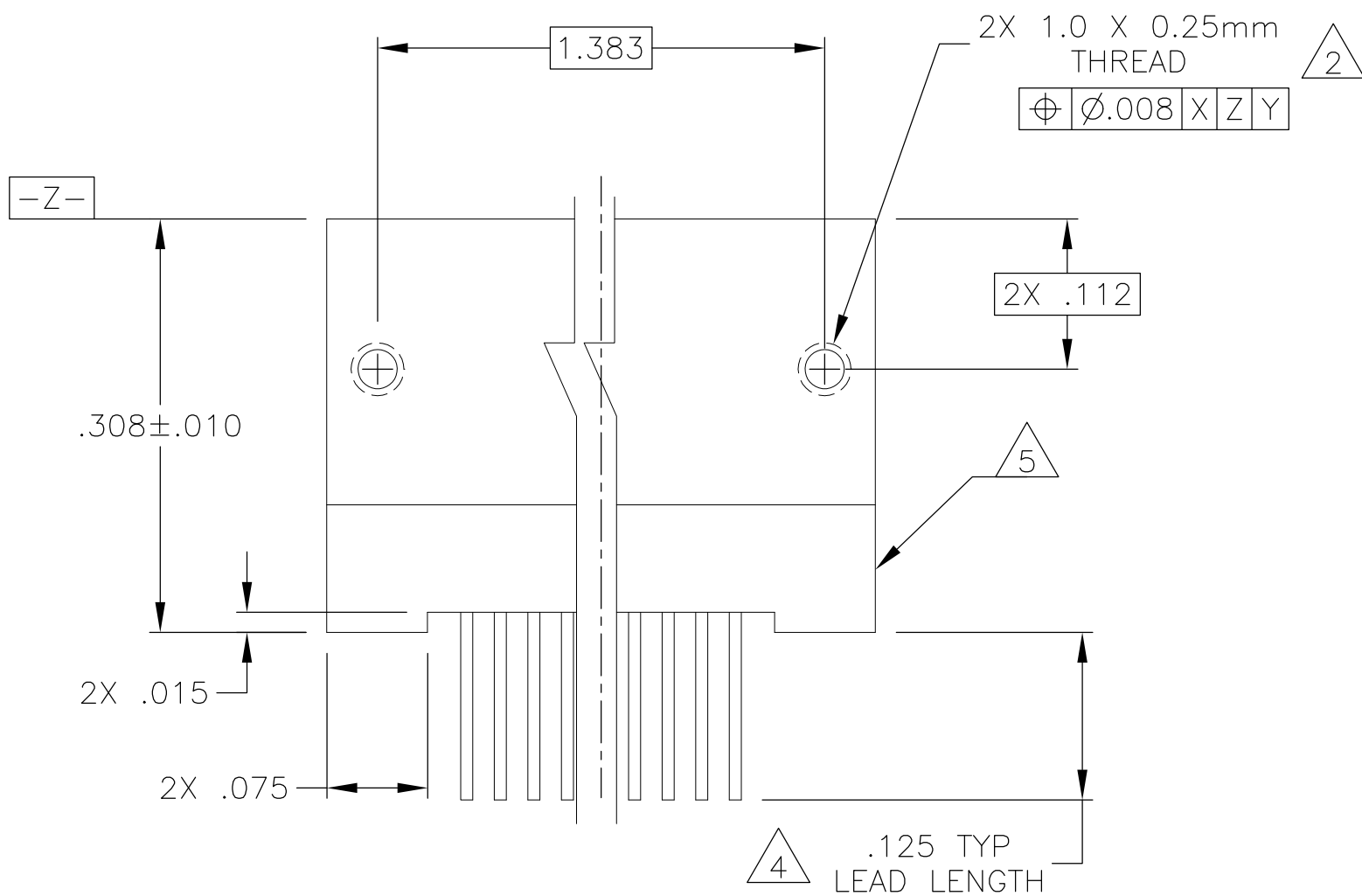
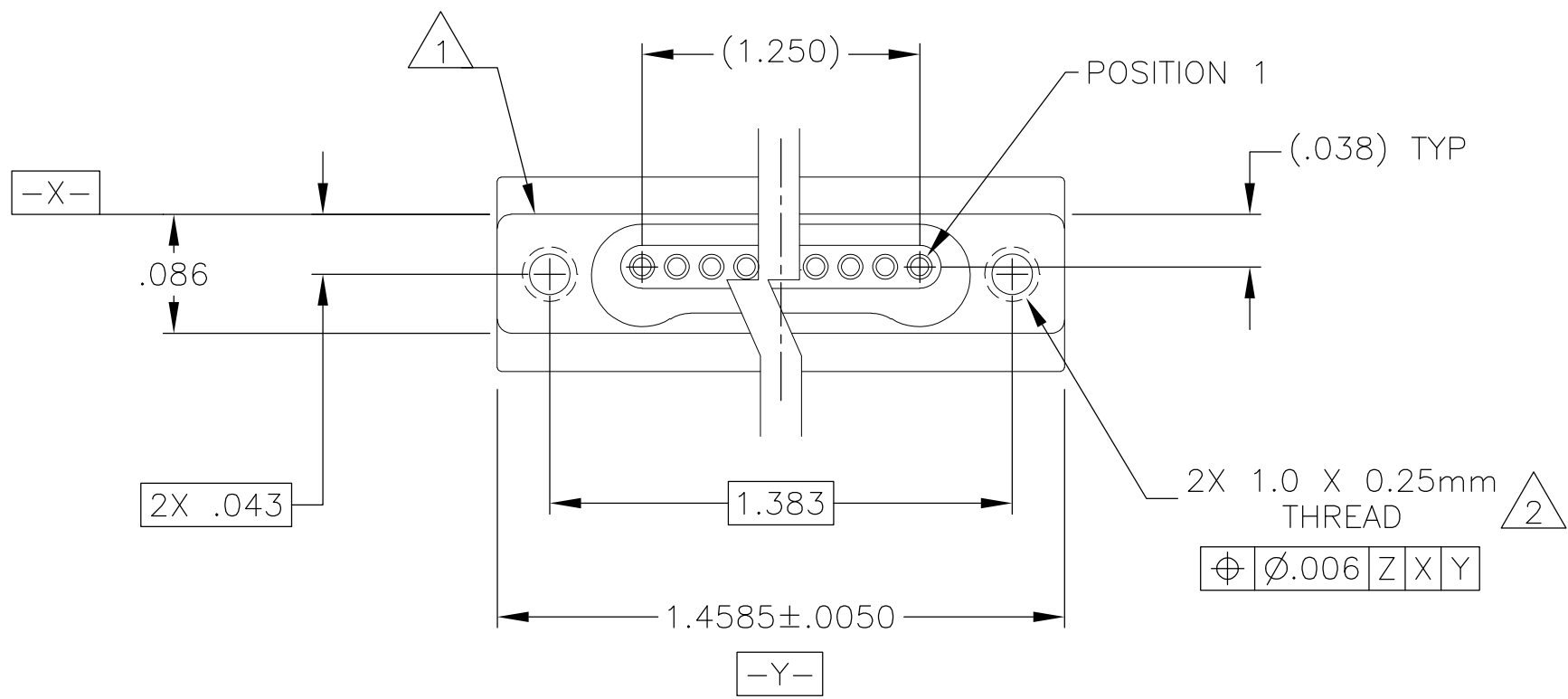


REVISIONS					
P	LTR	DESCRIPTION	DATE	DWN	APVD
	A	RELEASED	8-11-16	CT	CD



1. SHELL OPTIONS (TO BE SPECIFIED IN NANONICS PART NUMBER):
METAL: 6061-T6 ALUMINUM, ELECTROLESS NICKEL PLATED PER SAE-AMS-C-26074 OR SAE-AMS-2404 (STANDARD)
INSULATOR MATERIAL: LIQUID CRYSTAL POLYMER (LCP) PER MIL-M-24519 OR PER ASTM D5138
2. STANDARD 1.0 X 0.25mm JACKSCREW AND MOUNTING THREADS ARE SHOWN FOR REFERENCE ONLY AND MUST BE SPECIFIED IN THE NANONICS PART NUMBER WHEN REQUIRED. 1.2 X 0.25mm THREADS ALSO AVAILABLE.
3. MOUNTING HARDWARE IS AVAILABLE WITH THIS CONFIGURATION (NOT SHOWN). HARDWARE MUST BE SPECIFIED IN THE NANONICS PART NUMBER. CONSULT TYCO ELECTRONICS FOR DETAILS.
4. LEAD MATERIAL: HH BRASS, TIN LEAD PLATED 60/40 COMPOSITION PER SAE-AMS-P-81728
5. LEAD ORGANIZER MATERIAL IS LIQUID CRYSTAL POLYMER PER ASTM D5138
6. THROUGH HOLE LEADS ARE EPOXY ENCAPSULATED WITHIN THE LEAD ORGANIZER
7. NANONICS TERMINATION CODE: M51

THIS DRAWING IS A CONTROLLED DOCUMENT.		DWN	8-11-16	<div></div> TE Connectivity		
		CHK	8-11-15			
		APVD	8-11-16			
		PRODUCT SPEC				
DIMENSIONS: INCHES		TOLERANCES UNLESS OTHERWISE SPECIFIED:		NAME		
		0 PLC	± -	RCPT ASSY, VERTICAL MOUNT, THRU HOLE, 1 ROW TO 2 ROW, .050 SPACING, METAL		
		1 PLC	± -			
		2 PLC	± .010			
		3 PLC	± .005			
		4 PLC	± -			
MATERIAL		FINISH		SIZE	CAGE CODE	DRAWING NO
SEE NOTES		SEE NOTES		WEIGHT	0	A2 0JPN9 C=2-1589470-1
				CUSTOMER DRAWING		
				SCALE	8:1	SHEET 1 of 2
						REV A

D

D

C

C

B

B

A

A

9.

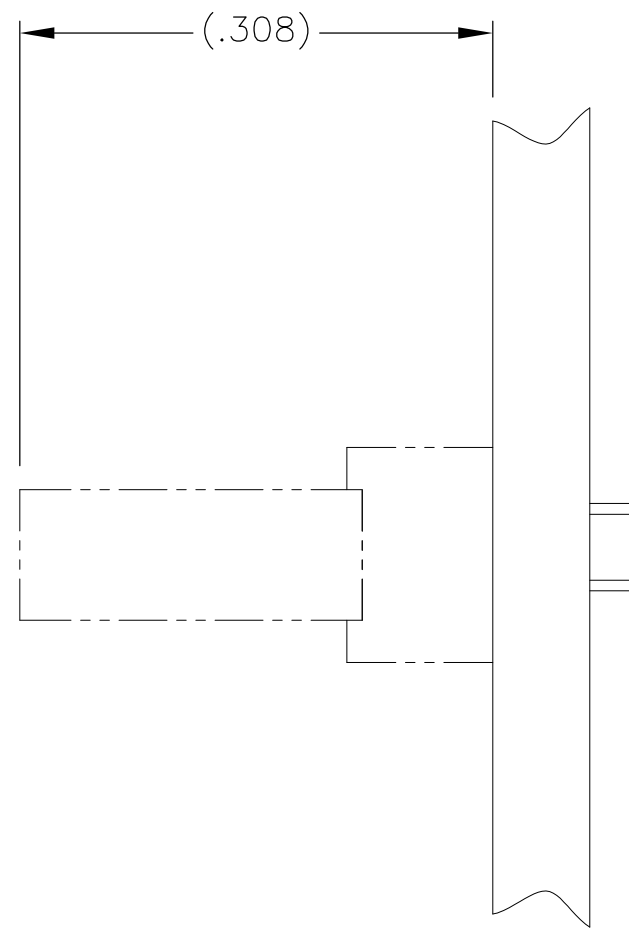
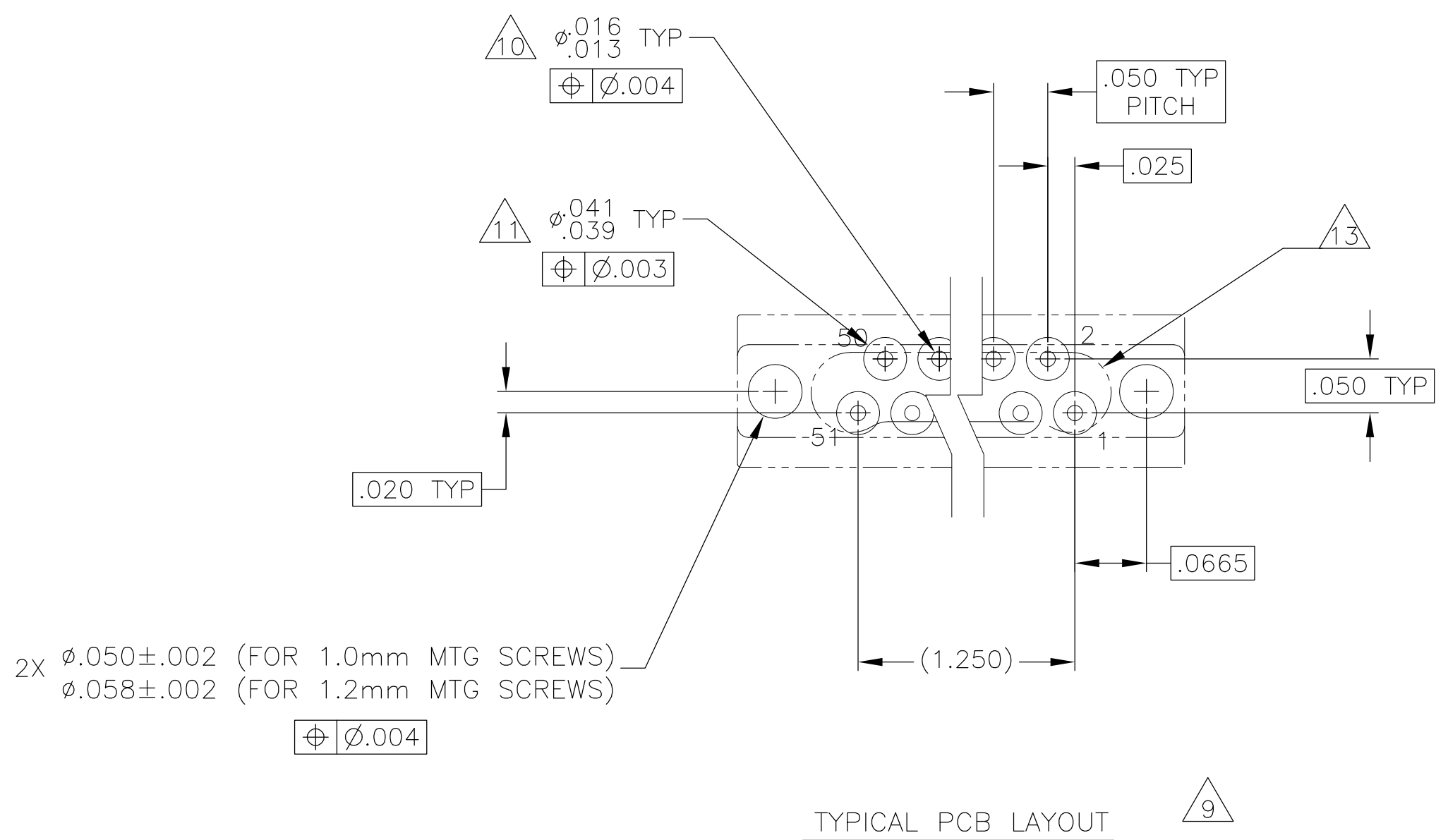
POSITIONAL TOLERANCES FOR BASIC DIMENSIONED FEATURES ARE RELATIVE TO FIDUCIALS OR SOME SIMILAR DATUM REFERENCES DEFINED BY PCB DESIGNER.
10.

PLATED THROUGH HOLES
11.

SOLDER PADS
12.

ALL THROUGH HOLE LAYOUTS ARE AS VIEWED FROM TOP OF PCB.
13.

CONNECTOR ORIENTATION



THIS DRAWING IS A CONTROLLED DOCUMENT.		DWN C.C.THOMAS 8-11-16	TE Connectivity			
		CHK C.DERRICK 8-11-16				
DIMENSIONS: INCHES		APVD —	NAME			
		PRODUCT SPEC	RCPT ASSY, VERTICAL MOUNT, THRU HOLE, 1 ROW TO 2 ROW, .050 SPACING, METAL			
		APPLICATION SPEC				
		—				
MATERIAL SEE NOTES	FINISH SEE NOTES	WEIGHT —	SIZE A2	CAGE CODE OJPN9	DRAWING NO C-2-1589470-1	RESTRICTED TO —
CUSTOMER DRAWING		SCALE 8:1	SHEET 2 of 2	REV A		

Mouser Electronics

Authorized Distributor

Click to View Pricing, Inventory, Delivery & Lifecycle Information:

[TE Connectivity:](#)

[2-1589470-1](#)