

REVISIONS					
P	LTR	DESCRIPTION	DATE	DWN	APVD
	A	ECN-24-279991;GTP	19AUG2024	TP	WH

NOTES:

ALL DIMENSIONS ARE NOMINAL FOR REFERENCE ONLY UNLESS OTHERWISE STATED;

RoHS: COMPLIANT.

SPECIFICATIONS:

IMPEDANCE: 50Ω

FREQUENCY: DC to 26.5 GHz

VSWR :
DC to 6 GHz 1.1 max.
6 to 12.4 GHz 1.2 max.
12.4 to 18 GHz 1.2 max.
18 to 26.5 GHz 1.4 max.

RETURN LOSS :
DC to 6 GHz 26.44 dB min.
6 to 12.4 GHz 20.83 dB min.
12.4 to 18 GHz 20.83 dB min.
18 to 26.5 GHz 15.56 dB min.

INSERTION LOSS: 0.64 dB max.

DIELECTRIC WITHSTANDING VOLTAGE: 1000 VRMS

CONTACT RESISTANCE:
CENTER: 12 milliohms max.
OUTER: 4 milliohms max.

INSULATION RESISTANCE: 5000 MΩ

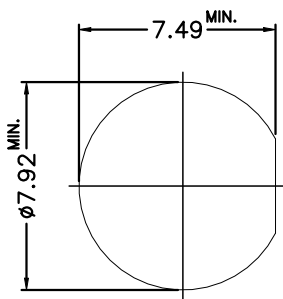
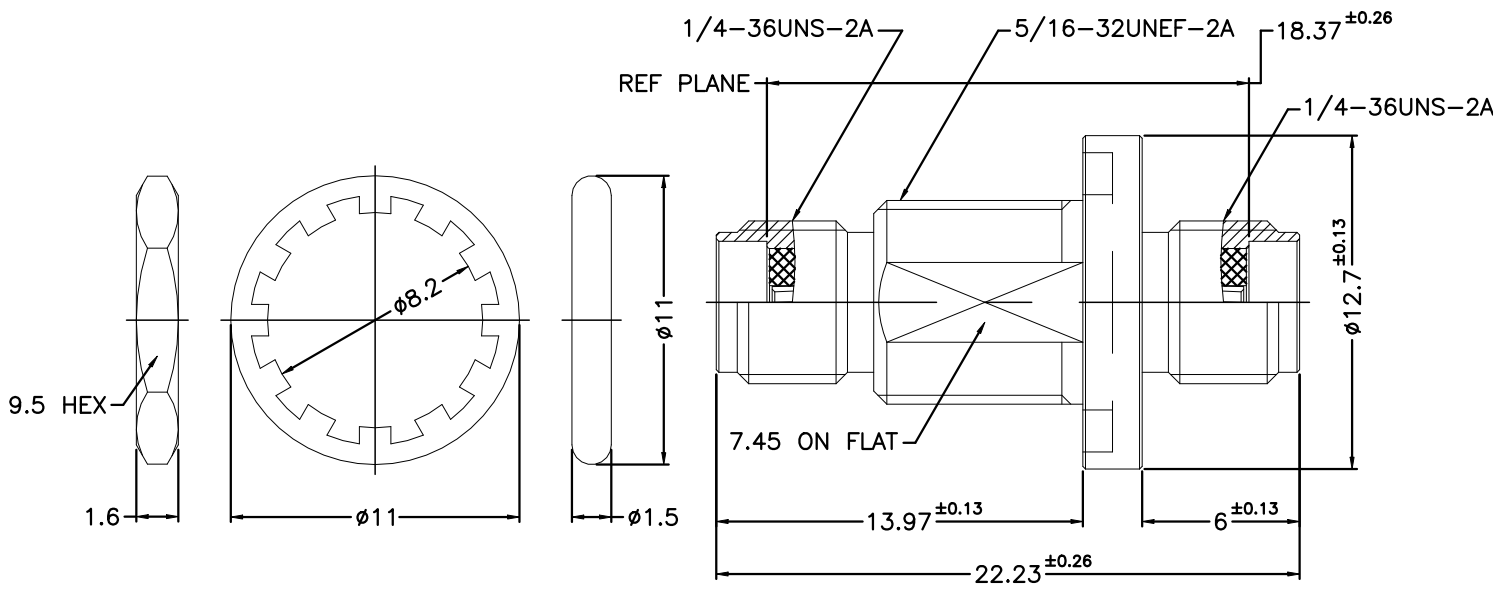
ENGAGEMENT AND DISENGAGEMENT FORCE:
ENGAGEMENT: 2 in-lbs max.
DISENGAGEMENT: 2 in-lbs max.

CONTACT RETENTION: 6 lbs. min.

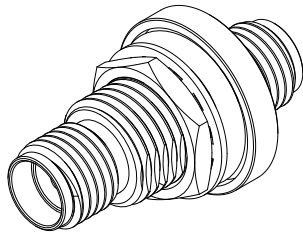
TEMPERATURE RANGE: -65°C TO +165°C

LEAK TEST: 1X10-8 atm.cc/sec

WEATHERPROOF: 30 psi max.



RECOMMENDED
MOUNTING HOLE
MAX. PANEL THICKNESS=4.82mm



NOTES:

- FINISH (PLATING THICKNESS IN MICRO-INCHES)
- 1 GOLD PLATING 50u" THICK OVER ELECTROLESS NICKEL PLATING 100u" THICK;
 - 2 GOLD PLATING 8u" THICK OVER ELECTROLESS NICKEL PLATING 100u" THICK;
 - 3 GOLD PLATING 35u" THICK OVER ELECTROLESS NICKEL PLATING 100u" THICK;

	1	NOTE 2	STAINLESS STEEL	HEX NUT	8
	1	NOTE 3	STAINLESS STEEL	LOCK WASHER	7
	1	RED	SILICONE	GASKET	6
	1	NOTE 1	BeCu	CONTACT PIN	5
	1	NATURAL	PTFE	INSULATOR	4
	1	NOTE 3	IRON-NICKEL-COBALT	SUB ASSEMBLY	3
	1	GREEN	Neg BH-14G/K		2
	1	NOTE 3	STAINLESS STEEL		1
	2478083-1	PLATING	MATERIAL	DESCRIPTION	ITEM

QUANTITY PER ASSY		PARTS LIST			
-------------------	--	------------	--	--	--

THIS DRAWING IS A CONTROLLED DOCUMENT.		DWN TP 09JUL2024	TE Connectivity		
		CHK ED 29NOV2023			
		APVD WH 29NOV2023	NAME		
DIMENSIONS: mm		PRODUCT SPEC	SMA Jack to SMA Jack Hermetic Bulkhead		
		SEE NOTES			
		APPLICATION SPEC			
			SIZE	CAGE CODE	DRAWING NO
MATERIAL		WEIGHT 5.68g	A300779		C-2478083
SEE TABLE		CUSTOMER DRAWING		SCALE 8:1	SHEET 1 of 2
				REV A	

Mouser Electronics

Authorized Distributor

Click to View Pricing, Inventory, Delivery & Lifecycle Information:

[TE Connectivity:](#)

[2478083-1](#)