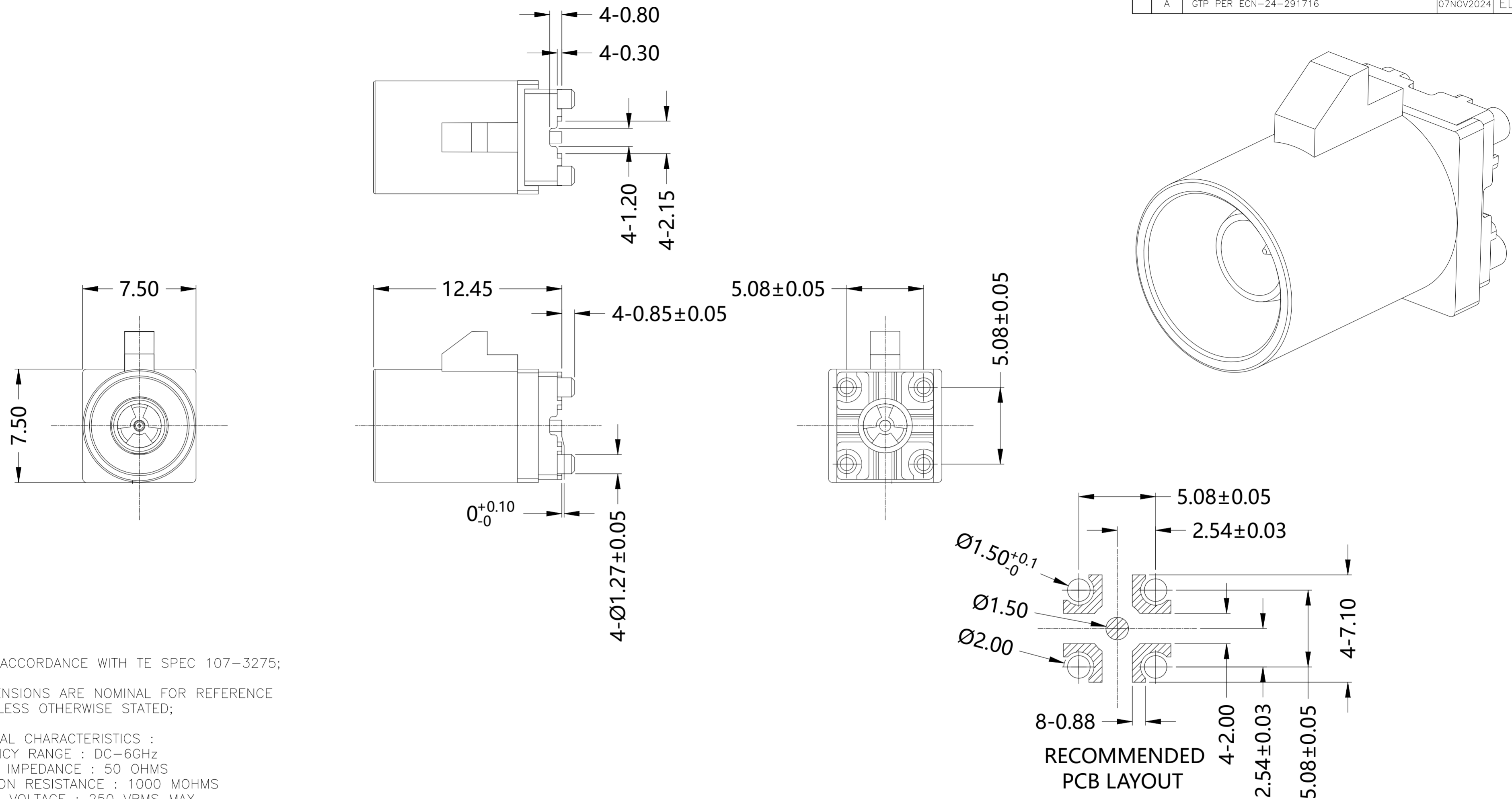


| REVISIONS |     |                       |           |     |      |
|-----------|-----|-----------------------|-----------|-----|------|
| P         | LTR | DESCRIPTION           | DATE      | DWN | APVD |
| A         |     | GTP PER ECN-24-291716 | 07NOV2024 | ED  | WH   |



NOTES:

- PACK IN ACCORDANCE WITH TE SPEC 107-3275;
- ALL DIMENSIONS ARE NOMINAL FOR REFERENCE ONLY UNLESS OTHERWISE STATED;
- ELECTRICAL CHARACTERISTICS :  
 FREQUENCY RANGE : DC-6GHz  
 NOMINAL IMPEDANCE : 50 OHMS  
 INSULATION RESISTANCE : 1000 MOHMS  
 WORKING VOLTAGE : 250 VRMS MAX  
 DIELECTRIC WITHSTANDING VOLTAGE : 800 VOLTS MAX  
 VSWR : 1.40 MAX(DC-2GHz)  
           1.50 MAX(2-3GHz)  
           1.60 MAX(3-6GHz)  
 CONTACT RESISTANCE :  
   CENTER CONTACT : 10 mOHMS MAX  
   OUTER CONTACT : 7.5 mOHMS MAX;
- MECHANICAL CHARACTERISTICS :  
 DURABILITY : 100 CYCLES  
 MATING FORCE : 25N MAX;  
 DISENGAGEMENT FORCE : 2N MIN;  
 CONNECTOR DISENGAGEMENT FORCE WITH LOCK : 110N MIN;  
 UNMATING FORCE WITH DISENGAGED : 75N MAX;
- TEMPERATURE RANGE: -40°-+105°;
- RoHS: COMPLIANT;
- ALL DETAIL TEPNs ARE IN PAGE 2.


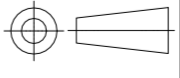
| QTY       | DESCRIPTION     | MATERIAL   | DESCRIPTION | ITEM |
|-----------|-----------------|------------|-------------|------|
| 1         | /               | PA66+30%GF | SHELL       | 4    |
| 1         | GOLD 3u"/COPPER | BRASS      | CONTACT PIN | 3    |
| 1         | NATURAL         | HTN 15%GF  | INSULATOR   | 2    |
| 1         | TIN 100u" MIN   | ZINC ALLOY | BODY        | 1    |
| 2474495-X | PLATING         | MATERIAL   | DESCRIPTION | ITEM |

| QUANTITY PER ASSY                      |  | PARTS LIST       |                              |  |  |
|----------------------------------------|--|------------------|------------------------------|--|--|
| THIS DRAWING IS A CONTROLLED DOCUMENT. |  | DWN              | 06NOV2023                    |  |  |
| DIMENSIONS: mm                         |  | CHK              | 13NOV2023                    |  |  |
| TOLERANCES UNLESS OTHERWISE SPECIFIED: |  | ED               | 13NOV2023                    |  |  |
| 0 PLC ± -                              |  | APVD             | 13NOV2023                    |  |  |
| 1 PLC ± 0.3                            |  | WH               | 13NOV2023                    |  |  |
| 2 PLC ± 0.2                            |  | PRODUCT SPEC     | -                            |  |  |
| 3 PLC ± 0.1                            |  | APPLICATION SPEC | -                            |  |  |
| 4 PLC ± -                              |  | WEIGHT           | 0                            |  |  |
| ANGLES ± 5'                            |  | SIZE             | A2                           |  |  |
| FINISH -                               |  | CAGE CODE        | 00779                        |  |  |
| MATERIAL SEE TABLE                     |  | DRAWING NO       | C=2474495                    |  |  |
|                                        |  | RESTRICTED TO    | -                            |  |  |
|                                        |  | CUSTOMER DRAWING | SCALE 8:1 SHEET 1 OF 2 REV A |  |  |

REVISIONS

| P | LTR | DESCRIPTION | DATE | DWN | APVD |
|---|-----|-------------|------|-----|------|
| - |     | SEE SHEET 1 | -    | -   | -    |

| Mechanical and Color Coding |                 |        |                                                                                       |
|-----------------------------|-----------------|--------|---------------------------------------------------------------------------------------|
| TEPN                        | Color           | Coding |                                                                                       |
| 2474495-1                   | Deep Black      | A      |    |
| 2474495-2                   | Signal White    | B      |    |
| 2474495-3                   | Signal Blue     | C      |    |
| 2474495-4                   | Bordeaux Violet | D      |    |
| 2474495-5                   | Leaf Green      | E      |    |
| 2474495-6                   | Brown           | F      |    |
| 2474495-7                   | Blue Grey       | G      |    |
| 2474495-8                   | Heather Violet  | H      |  |
| 2474495-9                   | Beige           | I      |  |
| 1-2474495-1                 | Curry Yellow    | K      |  |
| 1-2474494-2                 | Carmine-red     | L      |  |
| 1-2474495-3                 | Pastel orange   | M      |  |
| 1-2474495-4                 | Pastel green    | N      |  |
| 1-2474495-5                 | Water Blue      | Z      |  |

|                                                                                       |  |                                                                                    |           |                                                                                                            |      |           |
|---------------------------------------------------------------------------------------|--|------------------------------------------------------------------------------------|-----------|------------------------------------------------------------------------------------------------------------|------|-----------|
| THIS DRAWING IS A CONTROLLED DOCUMENT.                                                |  | DWN                                                                                | 06NOV2023 |  TE Connectivity Ltd. |      |           |
|                                                                                       |  | CHK                                                                                | ED        |                                                                                                            |      | 06NOV2023 |
|                                                                                       |  | APVD                                                                               | WH        |                                                                                                            |      | 06NOV2023 |
|                                                                                       |  | PRODUCT SPEC                                                                       |           |                                                                                                            |      |           |
| DIMENSIONS:<br>mm                                                                     |  | TOLERANCES UNLESS OTHERWISE SPECIFIED:                                             |           | NAME                                                                                                       |      |           |
|  |  | 0 PLC ± -<br>1 PLC ± 0.3<br>2 PLC ± 0.2<br>3 PLC ± 0.1<br>4 PLC ± -<br>ANGLES ± 5° |           | FAKRA MALE WITH HOUSING,<br>STRAIGHT,PCB,DC-6GHZ                                                           |      |           |
| MATERIAL<br>SEE TABLE                                                                 |  | FINISH<br>-                                                                        |           | WEIGHT                                                                                                     | -    |           |
|                                                                                       |  | CUSTOMER DRAWING                                                                   |           | SCALE                                                                                                      | 8:1  |           |
|                                                                                       |  | SHEET                                                                              |           | 2                                                                                                          | OF 2 |           |
|                                                                                       |  | REV                                                                                |           | A                                                                                                          |      |           |

# Mouser Electronics

Authorized Distributor

Click to View Pricing, Inventory, Delivery & Lifecycle Information:

[TE Connectivity:](#)

[2474495-4](#) [1-2474495-5](#) [2474495-2](#) [2474495-1](#) [2474495-3](#)