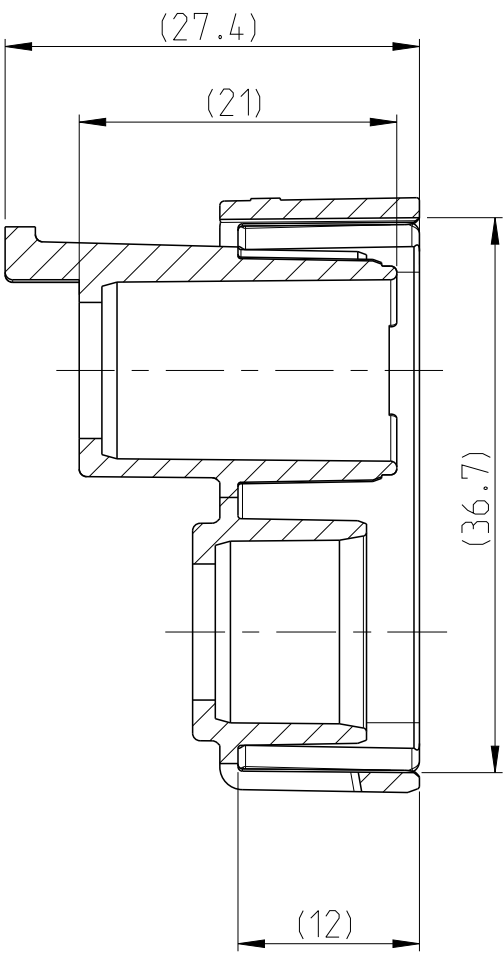


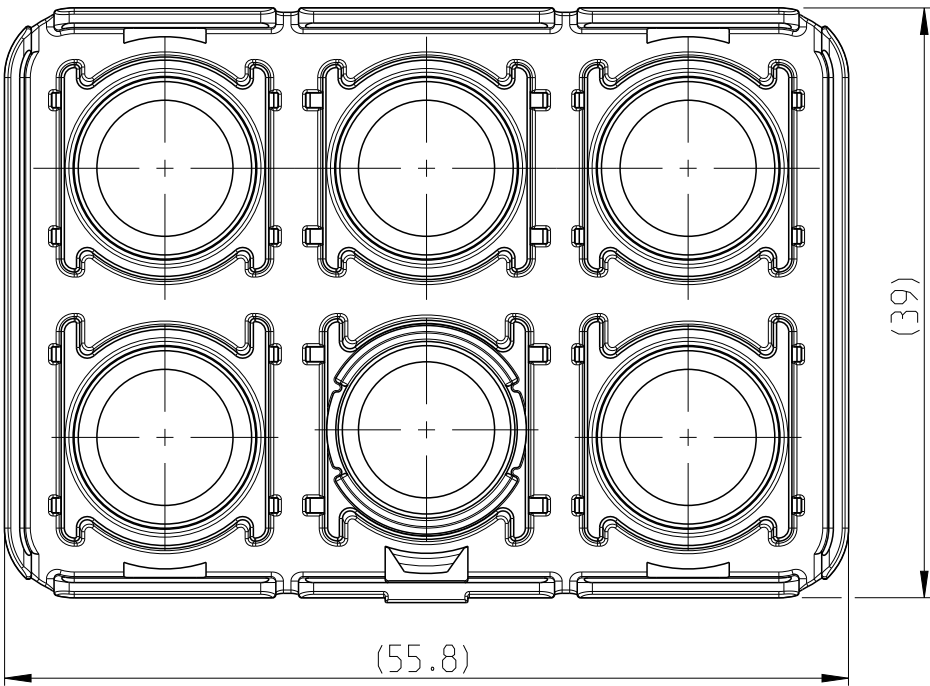
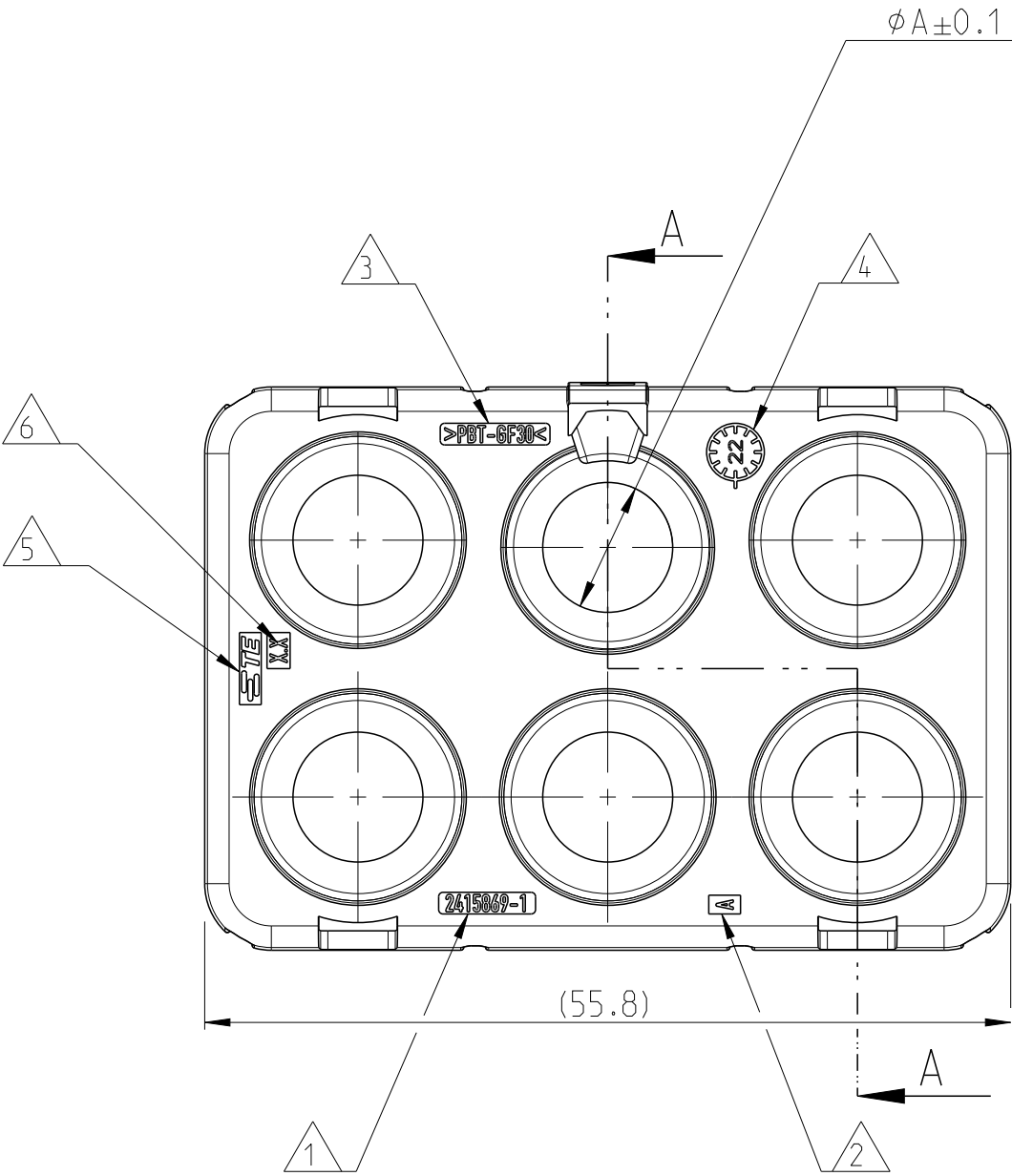
NOTES:

- 1 TE-SINGLE PART NUMBER.
- 2 REVISION, SEE TABLE (CHARACTERS ONLY).
- 3 MATERIAL MARKING ACCORDING TO VDA 260.
- 4 PRODUCTION DATE
- 5 TE-TRADEMARK ACC TO SPEC 1621426-4.
- 6 MOLD CAVITY ID.
- 7 PACKAGING ACCORDING TO V2415869

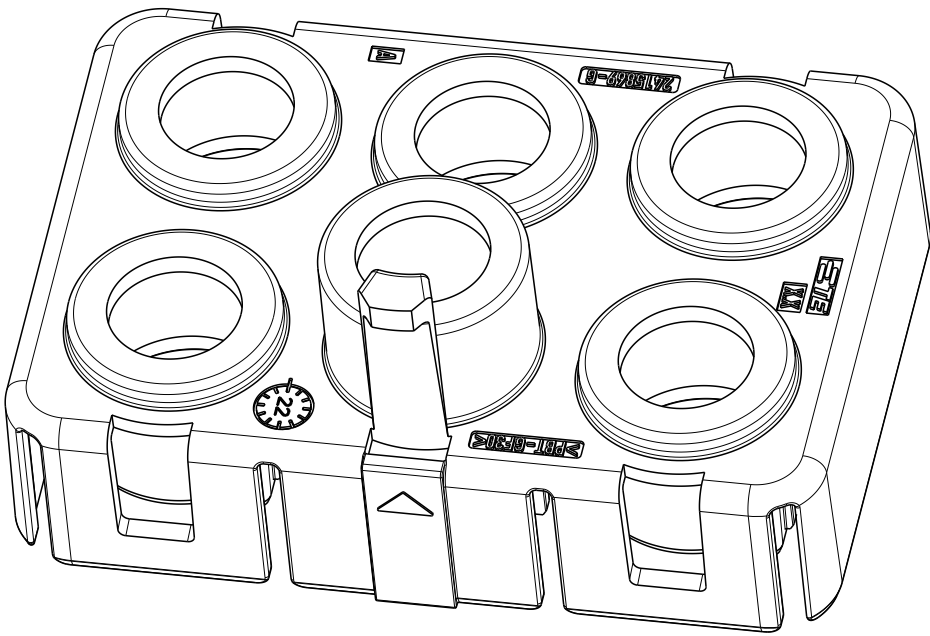
REVISIONS					
P	LTR	DESCRIPTION	DATE	DWN	APVD
	A1	INITIAL RELEASE	20JUL2022	RN	KPB



A-A



AS SHOWN
2415869-1
SCALE 2:1



2415869-1	A	AC LARGE EXIT BACK COVER	ø 9 (6X)	13.77	BLACK
TE-PART-NO.	REV	DESCRIPTION	DIM A	WEIGHT [g]	COLOUR
			COVER CABLE DIM		

THIS DRAWING IS A CONTROLLED DOCUMENT.		DWN 19JUL2022 CHK 20JUL2022 APVD 20JUL2022	TE Connectivity		
DIMENSIONS: mm		TOLERANCES UNLESS OTHERWISE SPECIFIED:		NAME AC LARGE EXIT BACK COVER	
		0 PLC ±0.1 1 PLC ±0.1 2 PLC ±0.01 3 PLC ±0.001 4 PLC ±0.0001 ANGLES ±		SIZE A2	
MATERIAL -		FINISH -		CAGE CODE 00779	
				DRAWING NO C=2415869	
				RESTRICTED TO -	
				SCALE 2:1	
				SHEET 1 OF 1	
				REV A1	

Mouser Electronics

Authorized Distributor

Click to View Pricing, Inventory, Delivery & Lifecycle Information:

[TE Connectivity:](#)

[2415869-1](#)