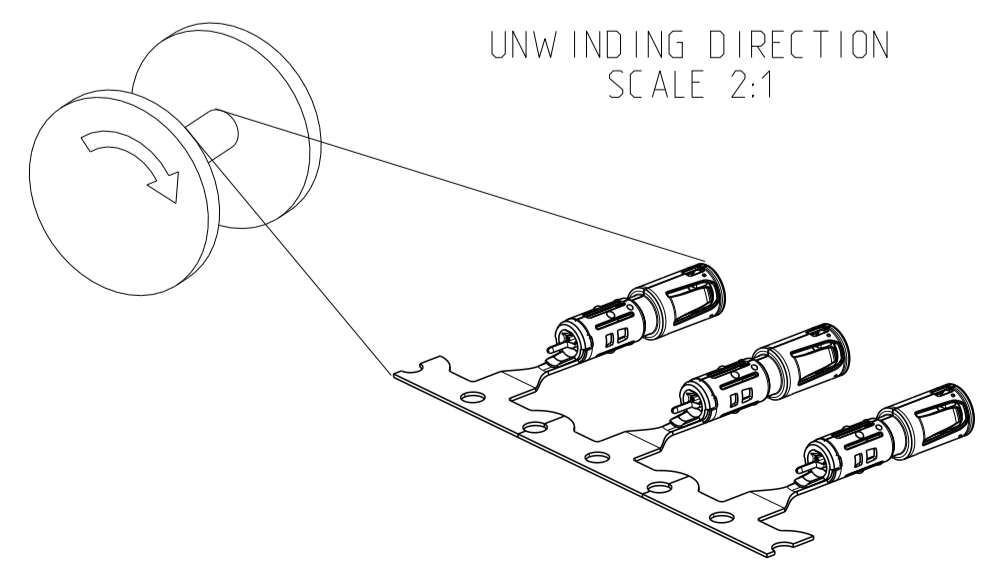
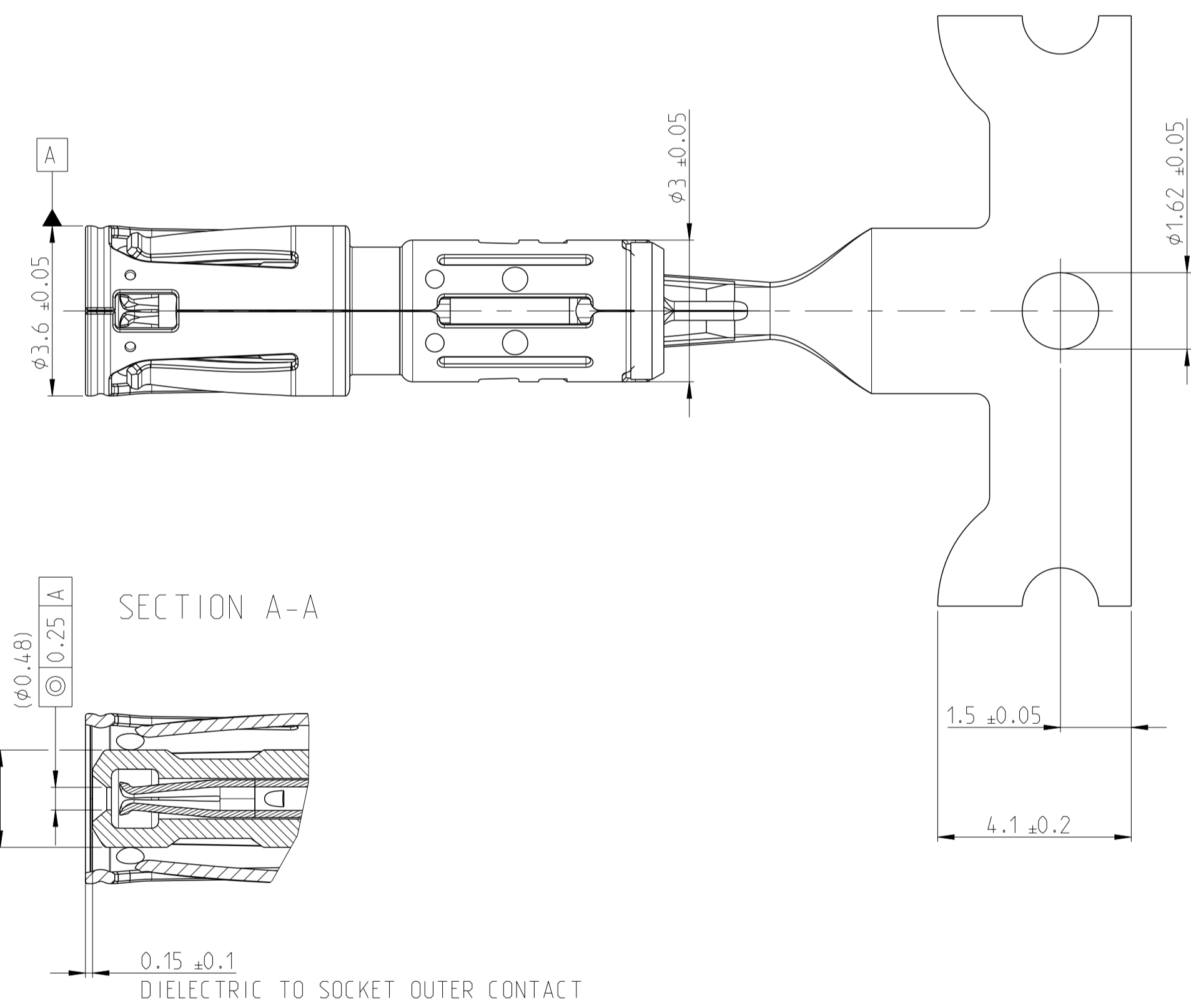
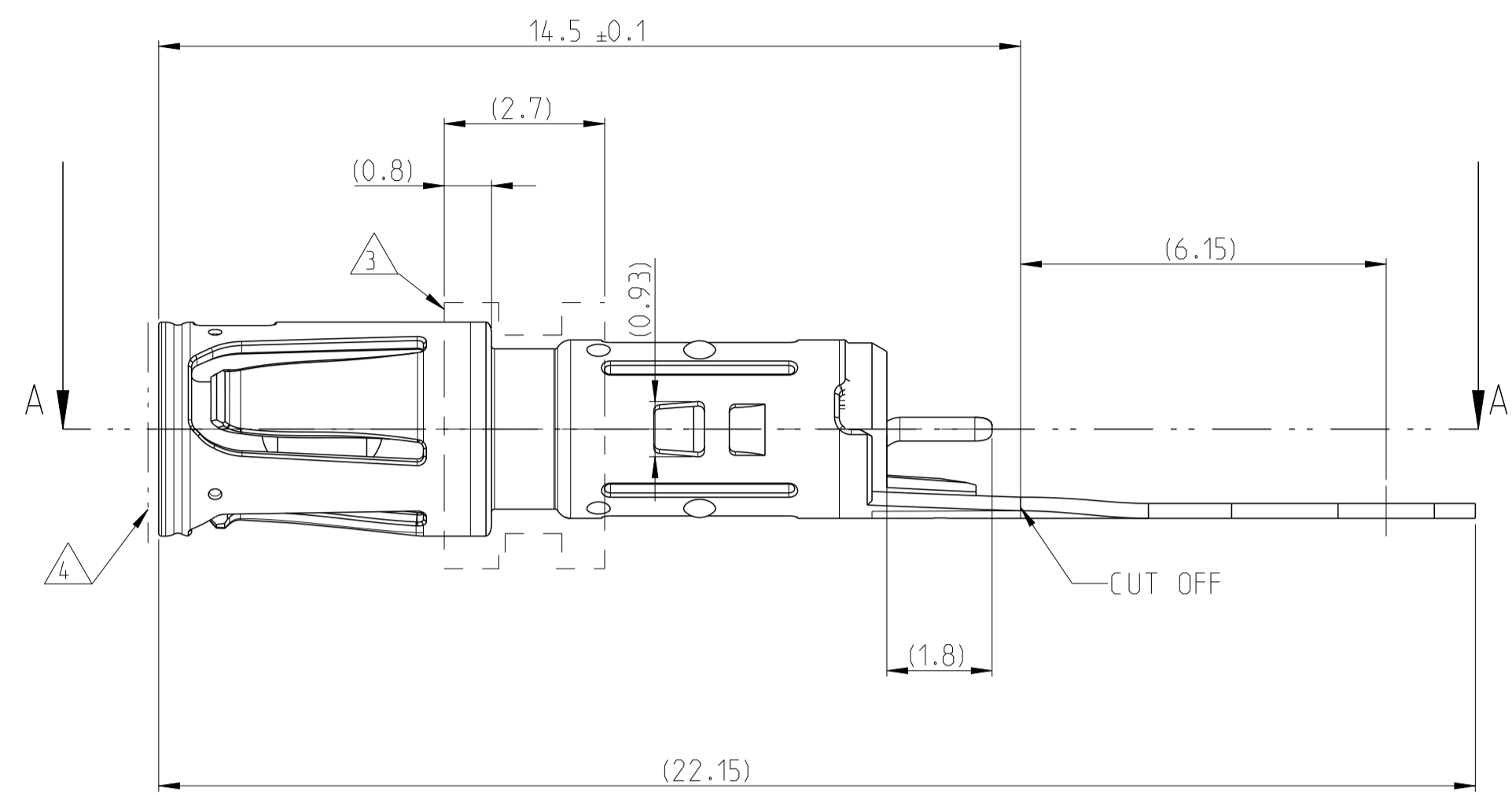
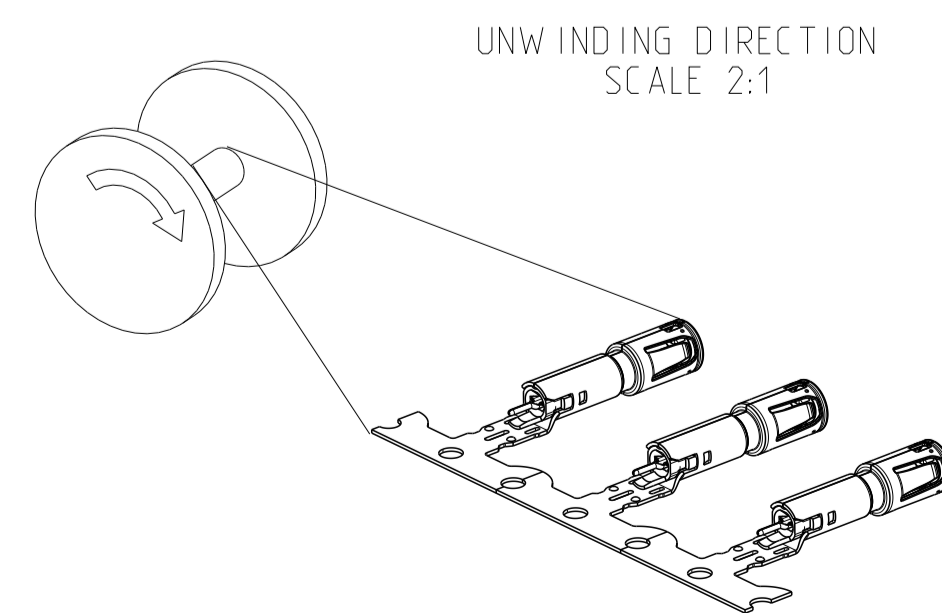
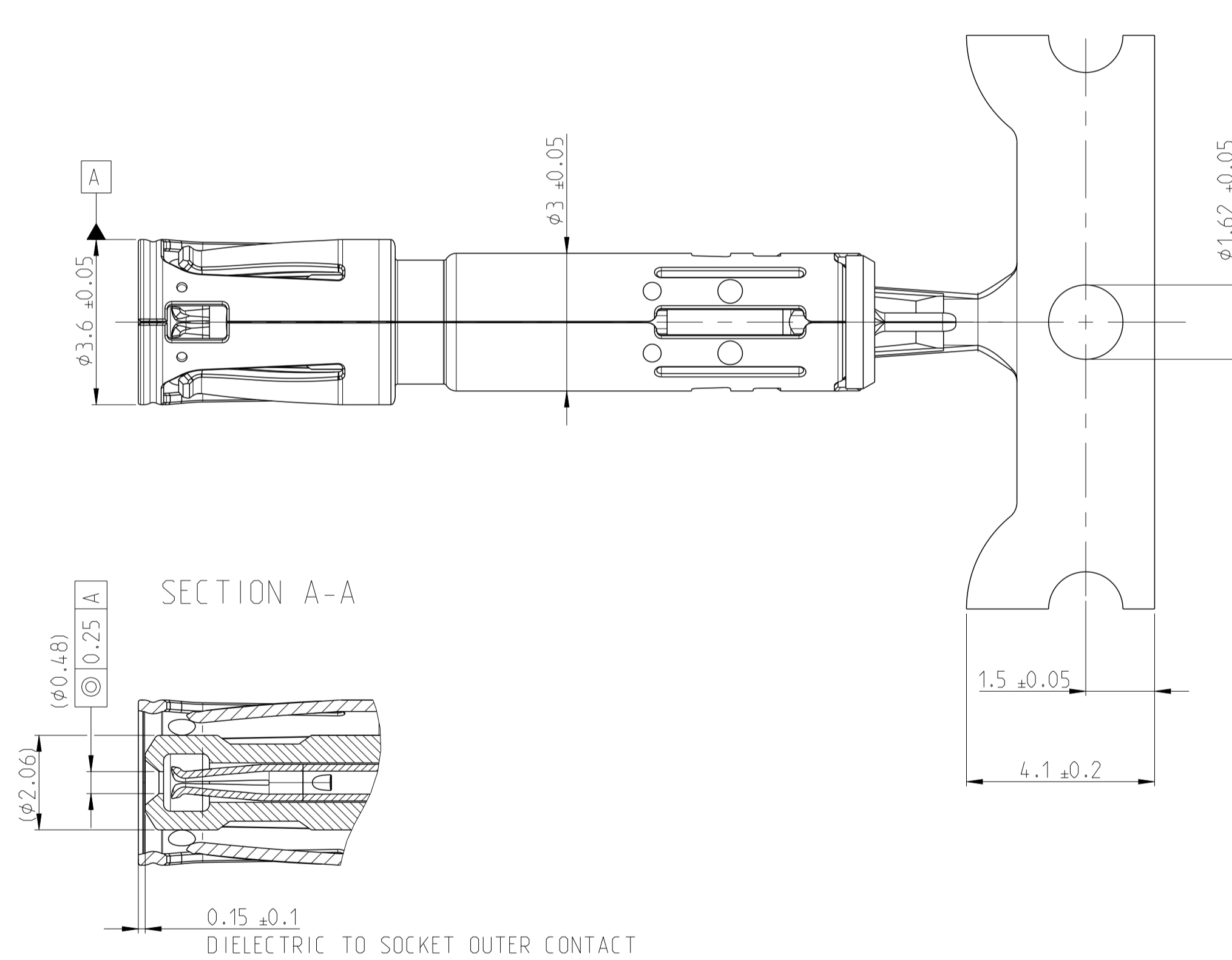
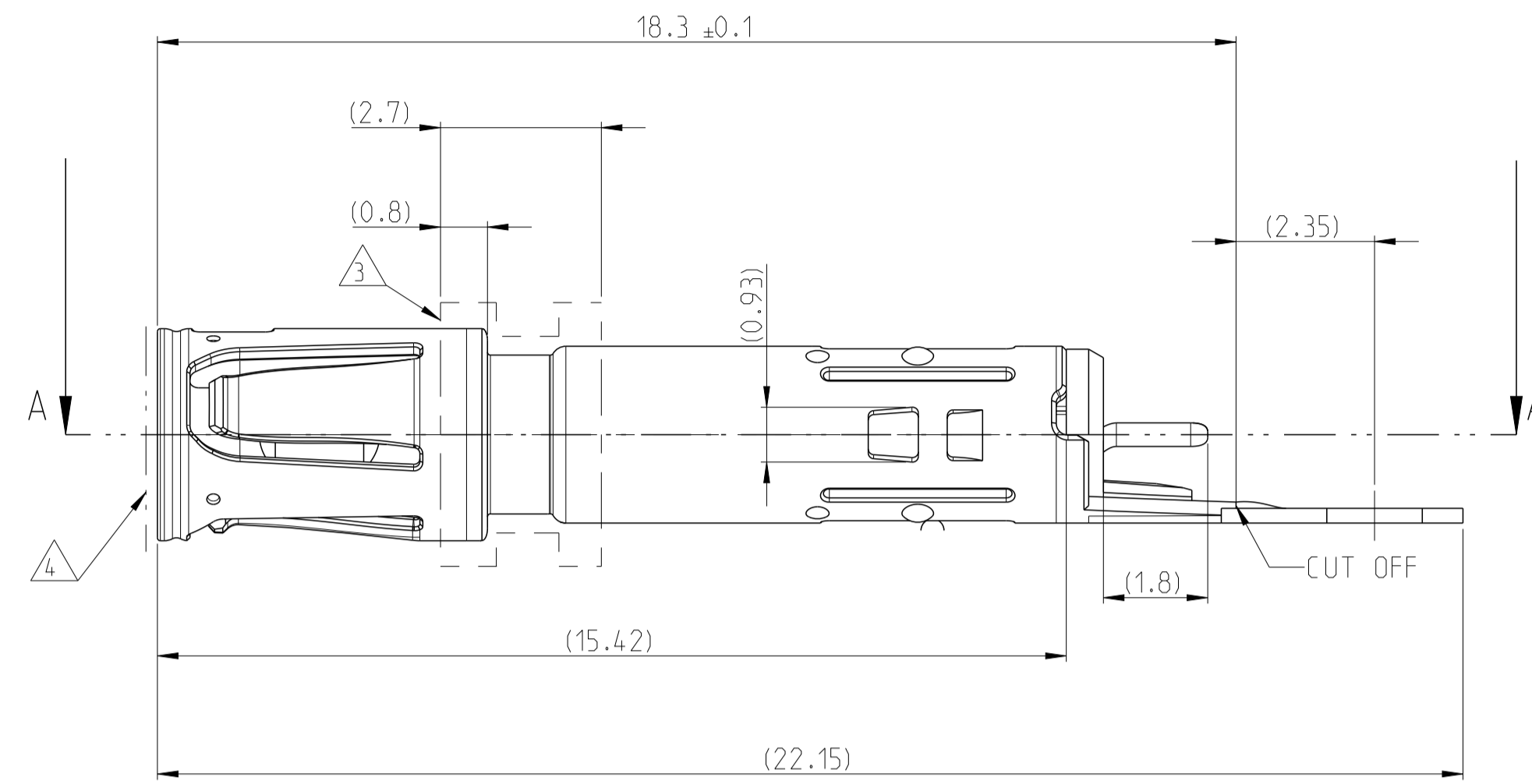


SUBASSEMBLY INTERFACE ADAPTER, SHORT 2327550-1
Subassembly Schnittstellen Adapter, Kurz 2327550-1



SUBASSEMBLY INTERFACE ADAPTER, LONG 2327550-3
Subassembly Schnittstellen Adapter, Lang 2327550-3

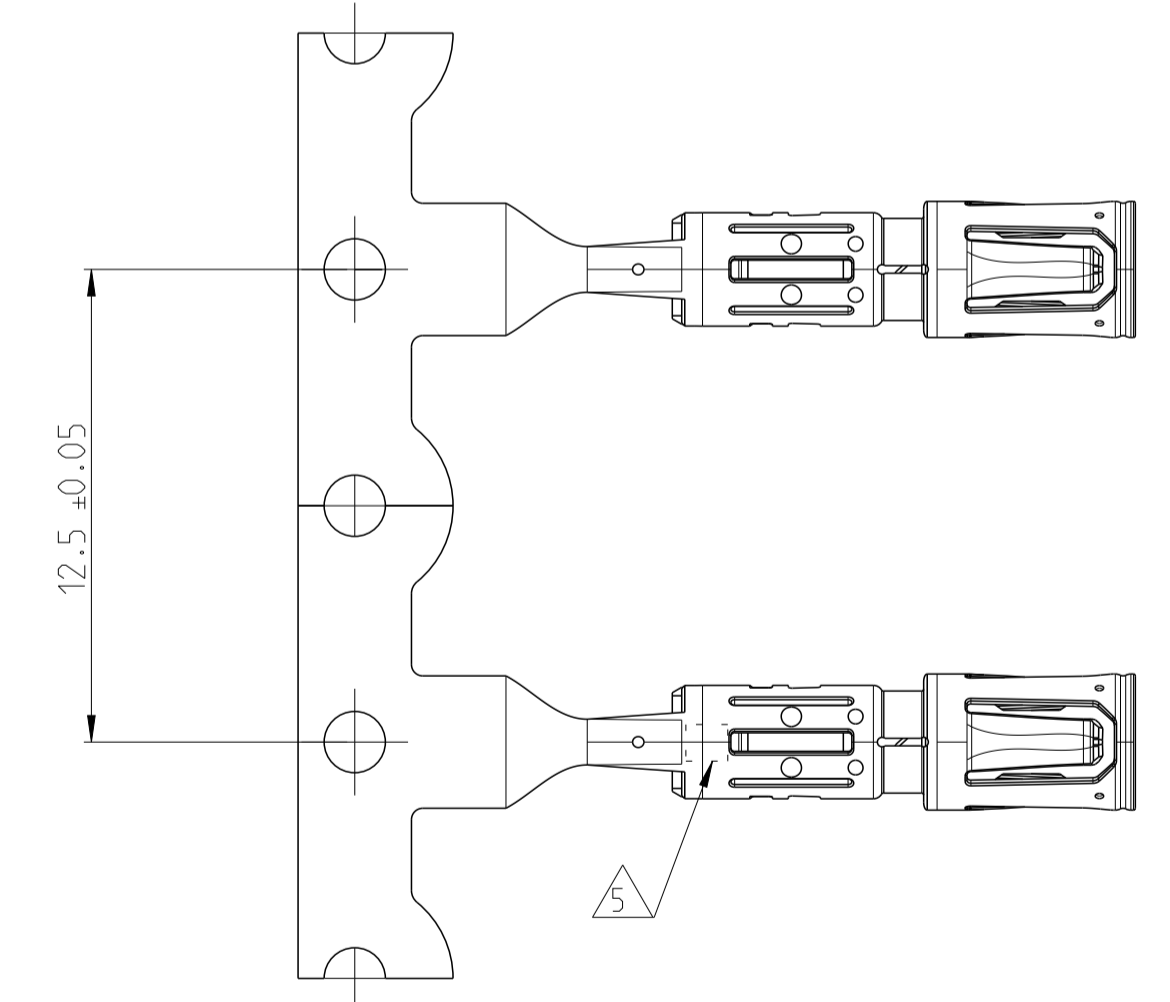


REVISIONS				
P	LTN	DESCRIPTION	DATE	APVD
B		INITIAL RELEASE	18NOV2021	RM CS
B1		UPFATE DRAWING	21MAR2022	SA CS

NOTES
Bemerkungen

- PACKAGING: PRODUCT REELED ON CORRUGATED REEL WITH INTERLEAVING PAPER
Verpackung: Spulenware auf Wellpappespule mit Zwischentagenpapier
- WEIGHT INCLUDING CARRIER STRIP
Gewicht mit Trägerstreifen
- ALLOWED AREA FOR CONTACT GRIPPING FOR TERMINATION
Zulaessiger Bereich zum Greifen des Kontaktes bei der Verarbeitung
- DURING THE PROCCESSING, THE CONTACT MAY BE LOADED WITH MAX. 30N IN AXIAL DIRECTION
Bei der Verarbeitung darf der Kontakt an gezeigter Stelle axial mit max. 30N belastet werden
- LOCATION FOR MARKING TE LOGO, PART REVISION DATE CODE, TOOL NUMBER
Lage der Markierung fur TE logo, Teile Rev., Datumcode, Werkzeugnummer

PART MARKING VIEW
SCALE 5:1



INTERFACE ADAPTER SHORT	OUTER CONTACT	CuSn	Sn	0.29	B	2327550-1
	CENTER CONTACT	CuSn	Ag			
INTERFACE ADAPTER LONG	OUTER CONTACT	CuSn	Sn	0.39	B	2327550-3
	CENTER CONTACT	CuSn	Ag			
DESCRIPTION	COMPONENT DESCRIPTION	MATERIAL	SURFACE	WEIGHT (g)	REV	PN
THIS DRAWING IS A CONTROLLED DOCUMENT.		DWN: Raghavendra.M CHK: S.Aboukassen		7NOV2021 13DEC2021		
DIMENSIONS: mm		TOLERANCES UNLESS OTHERWISE SPECIFIED:		NAME: MATE-AX, 90DEG. ADAPTER ASSY		
0 PLC ±0.2		1 PLC ±0.1		PRODUCT SPEC		
2 PLC ±0.1		3 PLC ±0.1		APPLICATION SPEC		
4 PLC ±		ANGLES ±		114-94566		
FINISH		WEIGHT		114-94566		
MATERIAL		CUSTOMER DRAWING		SCALE 10:1 SHEET 1 OF 1 REV B1		

Mouser Electronics

Authorized Distributor

Click to View Pricing, Inventory, Delivery & Lifecycle Information:

[TE Connectivity:](#)

[2327550-3](#) [2327550-1](#)