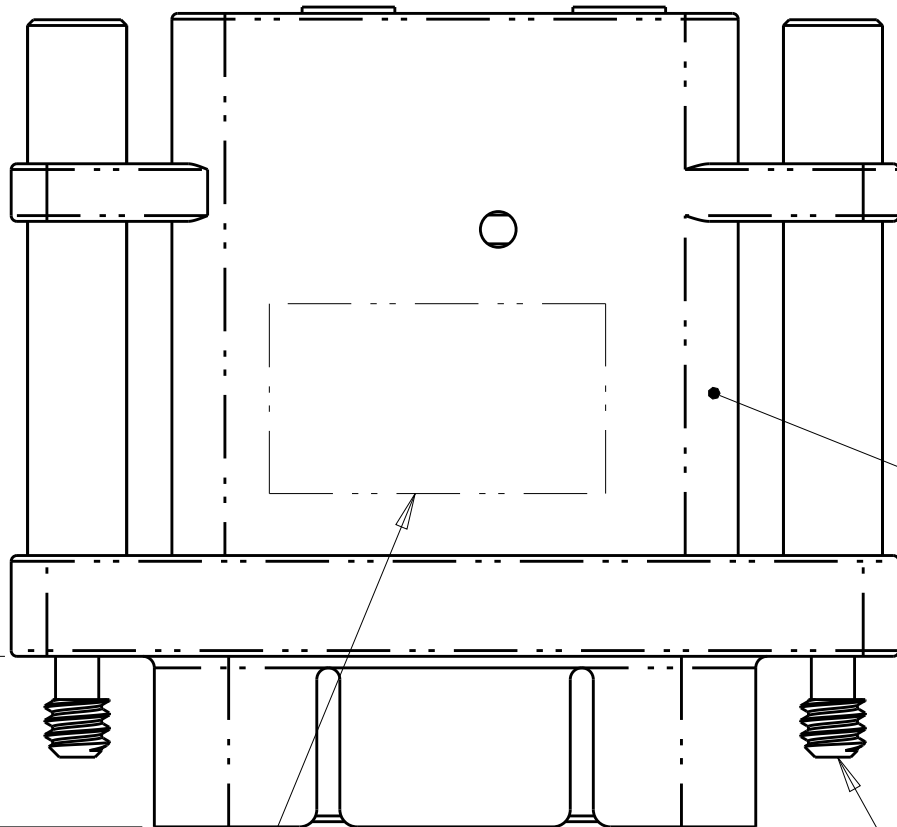
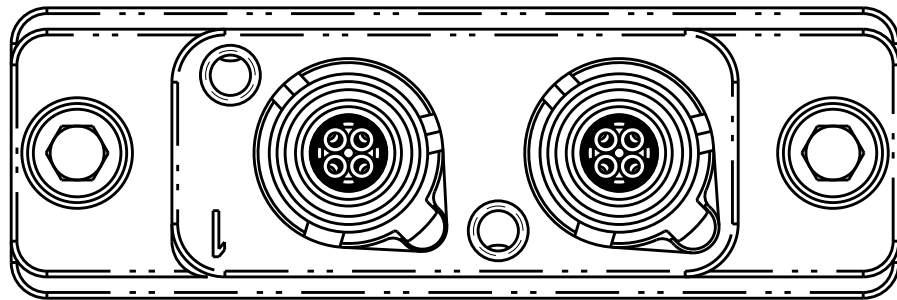


REVISIONS					
P.	LTR.	DESCRIPTION	DATE	DWN.	APVD.
	B	REV PER ECO 16-004866	4-14-16	CT	DM

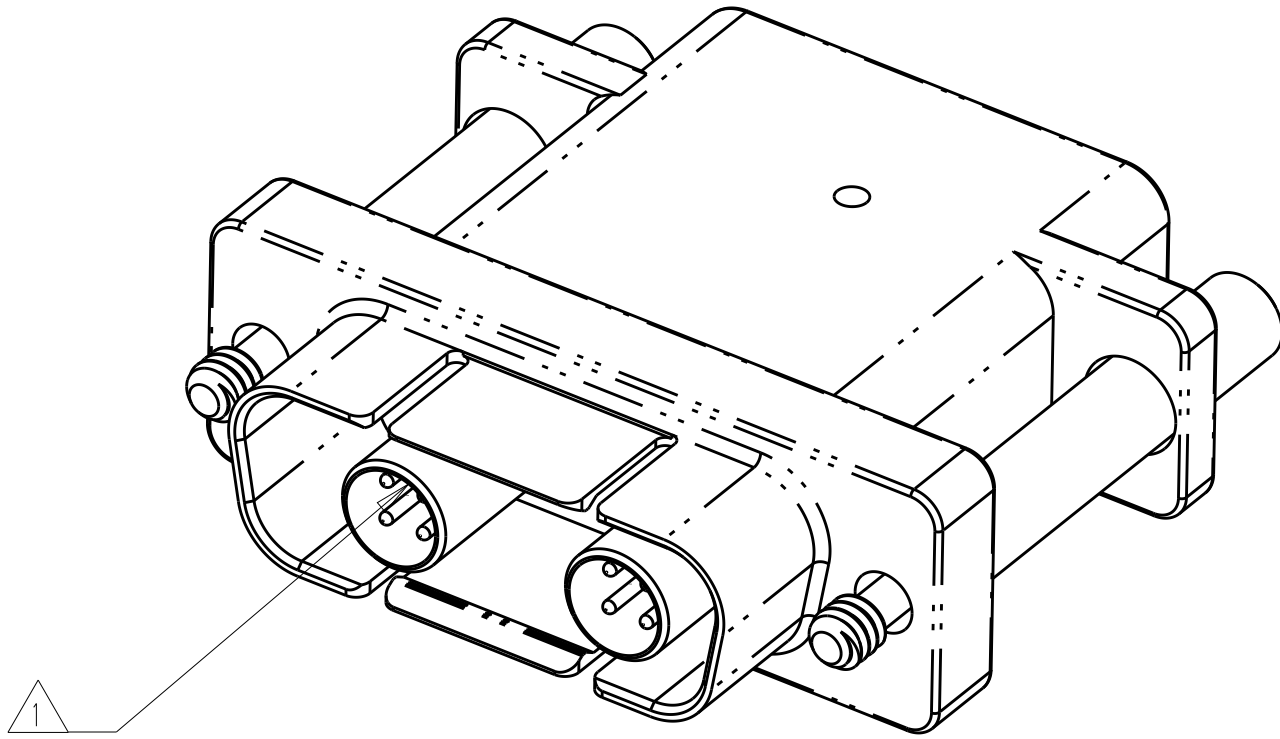


RECEPTACLE SHELL
NICKEL PLATED
ALUMINUM ALLOY

4-40 JACKSCREW
STAINLESS STEEL,
3/32 HEX SOCKET HEAD
2X

.296

3



1

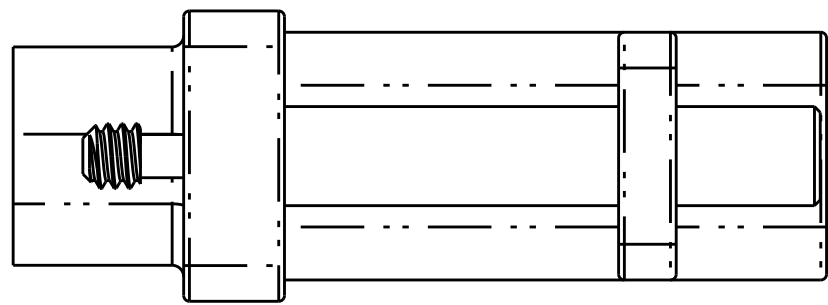
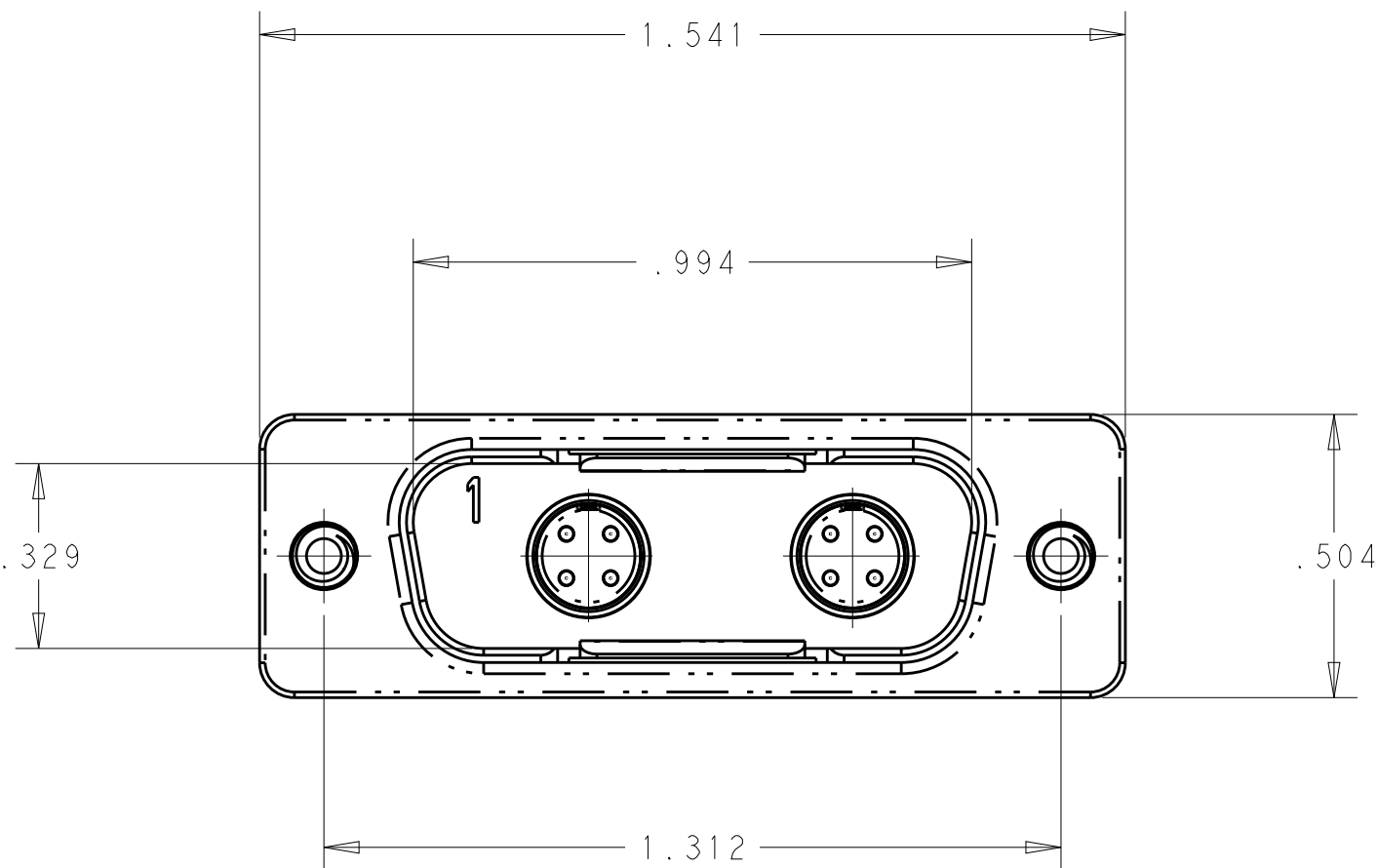
1 CONNECTOR KIT INCLUDES QUADRAX CONTACTS (TE PART# 1445692-3, QTY 2) FOR 100Ω CABLE.
SHOWN INSTALLED FOR REFERENCE ONLY.

2. RECOMMENDED CABLES :
RAYCHEM, CEC-RWC-18687, CEC-RWC-18664
TENSOLITE, NF24Q100, NF26Q100.

3 CONNECTOR IS MARKED WITH TE PART NUMBER, TE, CAGE CODE & DATE CODE.

4. OPERATING TEMPERATURE RANGE: -65°C TO 125°C (-85°F TO 257°F).

5. SILVER PLATED, STAINLESS STEEL RETENTION CLIPS ARE INSTALLED IN THE CONNECTOR.



---	2293403-2
	2293403-1
REMARKS	PART NUMBER

THIS DRAWING IS A CONTROLLED DOCUMENT.		DWN R. GLATFELTER 04JUN2015	TE Connectivity	
DIMENSIONS:		CHK D. MILLER 04JUN2015		
	I.D.	APVD D. MILLER 04JUN2015	NAME	
	0 PLC	PRODUCT SPEC	RECEPTACLE ASSY, LOW PROFILE RECTANGULAR QUADRAX, 202, SIZE 2, CABLE KIT	
	1 PLC	APPLICATION SPEC		
	2 PLC			
TOLERANCES UNLESS OTHERWISE SPECIFIED:		WEIGHT	SIZE	CAGE CODE
3 PLC		-	A 1	-
4 PLC		-	C=2293403	
ANGLES		CUSTOMER DRAWING	SCALE	SHEET
FINISH			3:1	1 OF 1
				REV B

Mouser Electronics

Authorized Distributor

Click to View Pricing, Inventory, Delivery & Lifecycle Information:

[TE Connectivity:](#)

[2293403-2](#)