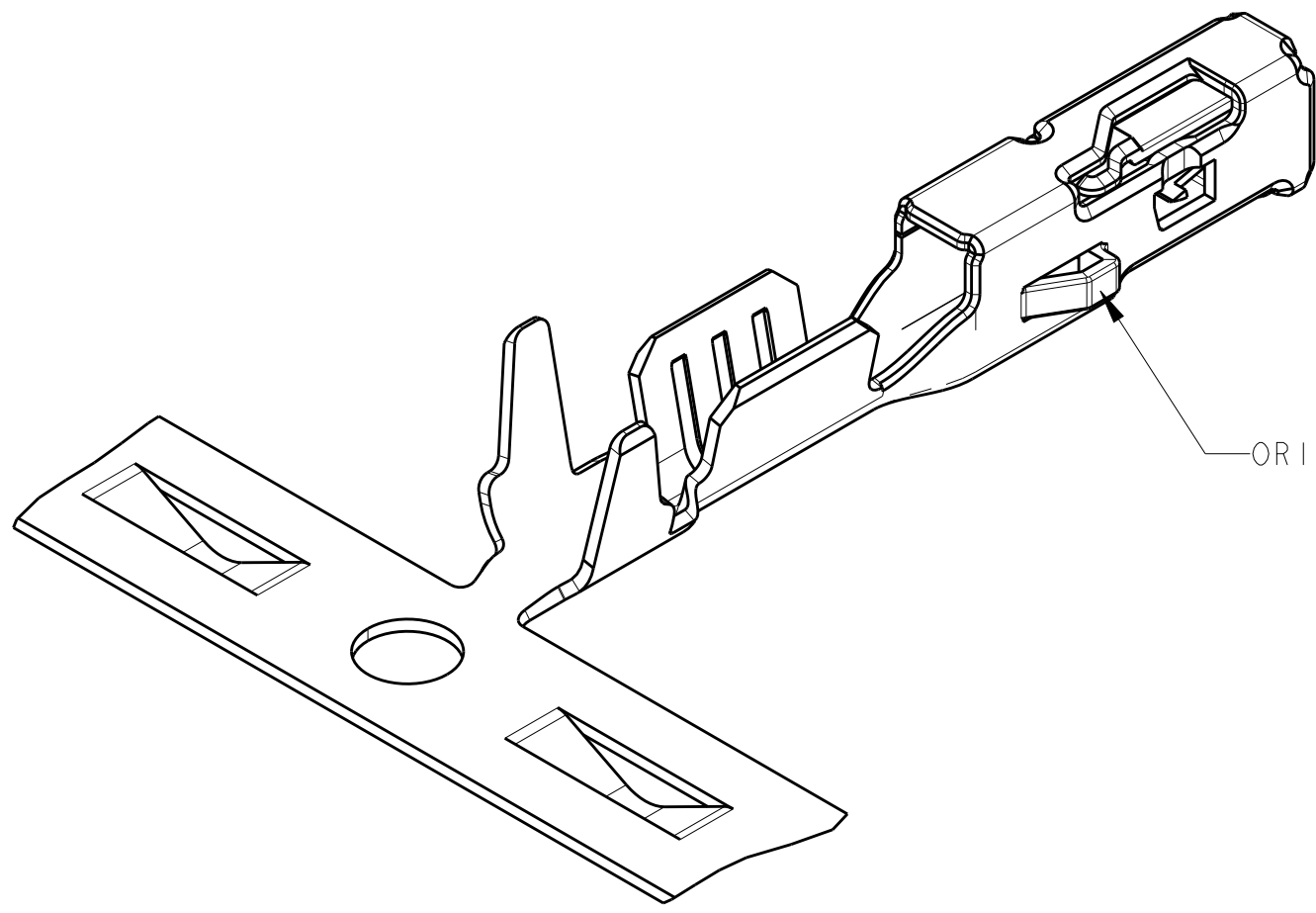
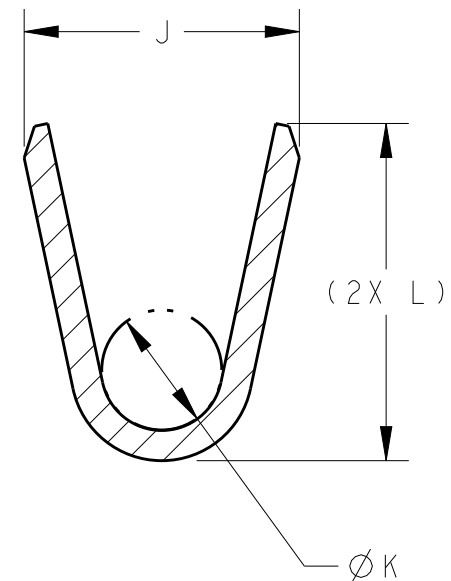
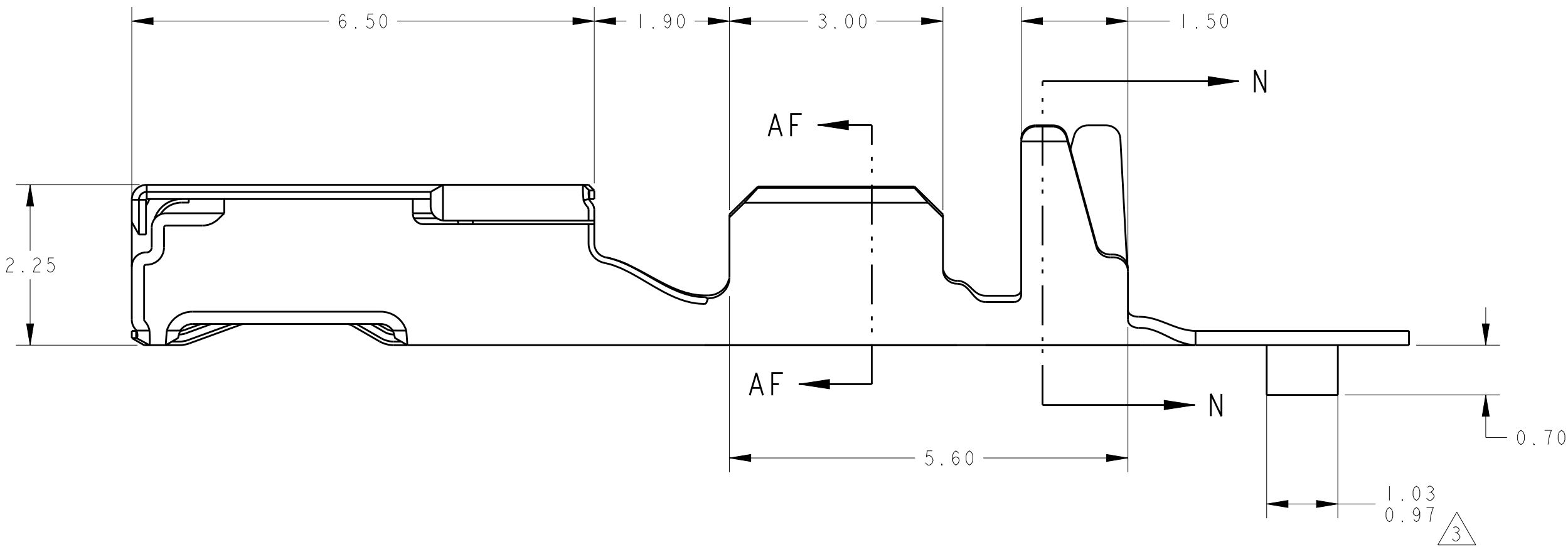
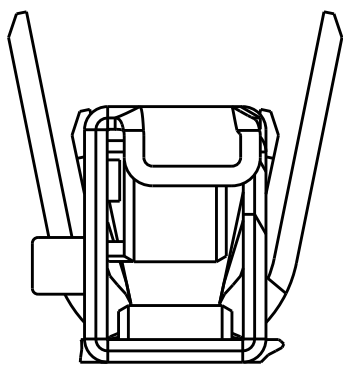
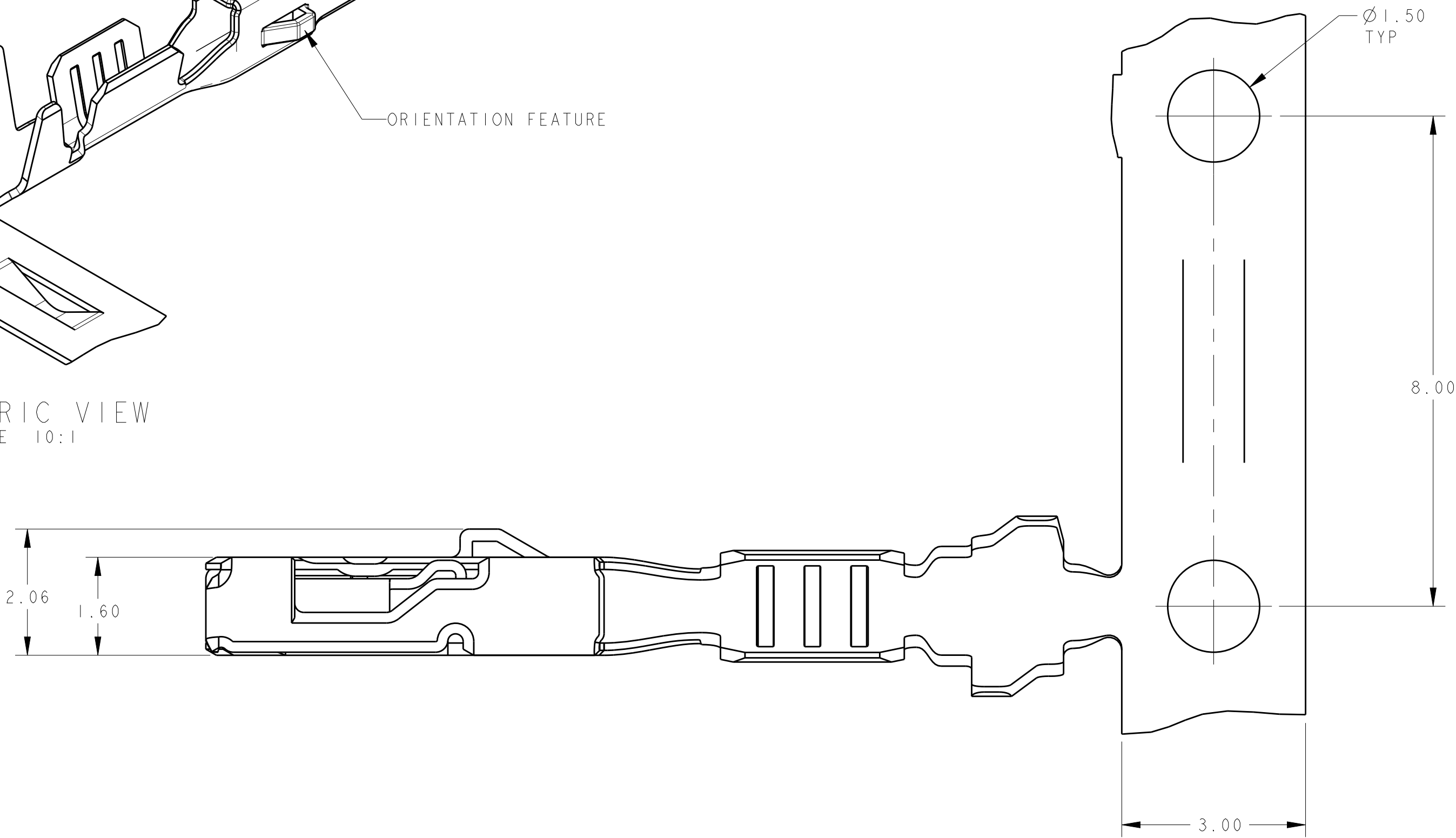


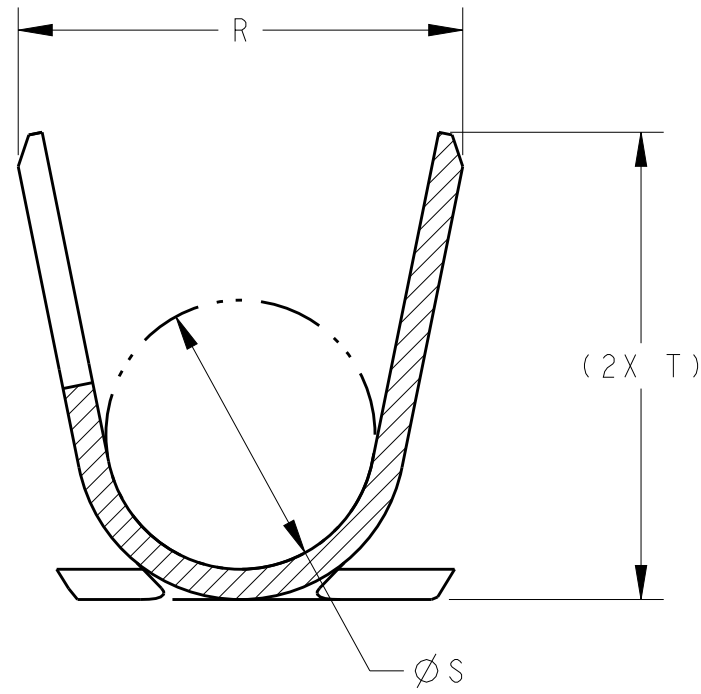
REVISIONS					
P	LTR	DESCRIPTION	DATE	DWN	APVD
	C	REVISED PER ECR-16-007232	18MAR2016	DLD	CJS



ISOMETRIC VIEW
SCALE 10:1



SECTION AF-AF
SCALE 20:1



SECTION N-N
SCALE 20:1

- 1 MATERIAL: 0.2mm THICK CuNiSi ALLOY
- 2 FINISH: PRE-PLATED WITH 1.00µm MIN BRIGHT TIN
- 3 MATERIAL ID FEATURE IN "DOWN" POSITION
4. THIS PRODUCT TO BE VALIDATED TO GMW3191, TEMP CLASS T3 AND VIBRATION CLASS VI
5. THIS PRODUCT IS DESIGNED TO BE COMPATIBLE WITH SEALED APPLICATIONS
6. NOTE DELETED
7. NORMAL FORCE 240 GRAMS REFERENCE.
8. BULGE PERMISSIBLE UNDER ORIENTATION FEATURE.
9. TERMINAL HAS NYE LUBRICANTS NYETACT 568J-50-UV PERFORMANCE LUBE/GREASE APPLIED. THIS IS A WHITISH COLORED LUBE. AMOUNT AND VISIBILITY MAY VARY.
- 10 NOT INTENDED FOR SEALED APPLICATIONS.
- 11 SEALING CAPABILITY MUST BE EVALUATED ON AN APPLICATION BASIS.

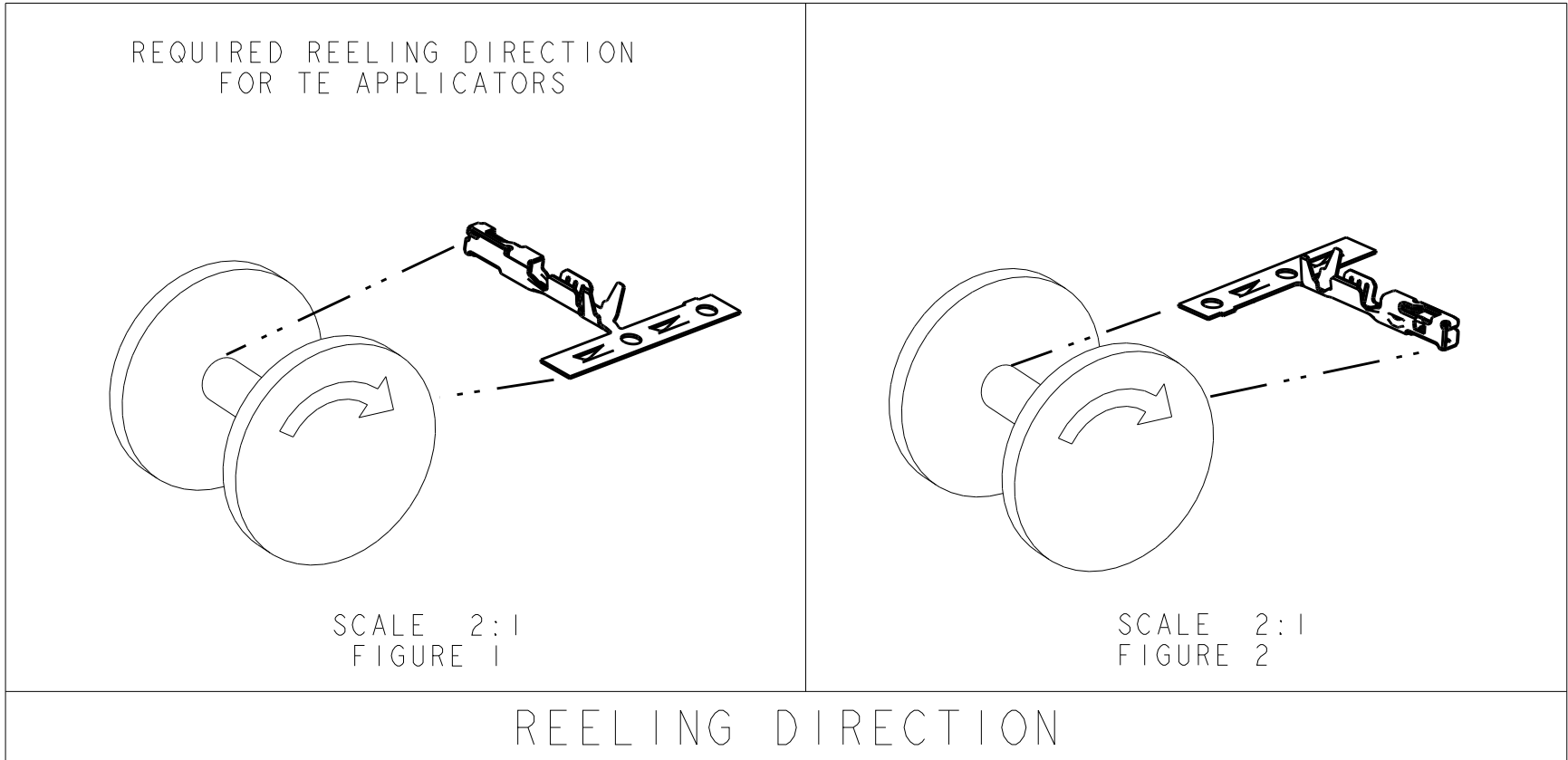




FIGURE 2	1.10-1.40	2.38	1.40	2.40	1.70	0.80	1.85	2	0.35	22	2035170-8	11
FIGURE 2	0.85-1.05	2.09	0.85	1.82	1.46	0.65	1.50	2	0.13	26	2035170-7	10
FIGURE 2	2.06 MAX	3.09	1.78	2.94	2.43	1.00	1.96	2	0.75	18	2035170-6	
FIGURE 2	1.50-1.85	3.09	1.78	2.94	2.23	0.80	1.82	2	0.35-0.50	20-22	2035170-5	
FIGURE 1	1.10-1.40	2.38	1.40	2.40	1.70	0.80	1.85	2	0.35	22	2035170-4	11
FIGURE 1	0.85-1.05	2.09	0.85	1.82	1.46	0.65	1.50	2	0.13	26	2035170-3	10
FIGURE 1	2.06 MAX	3.09	1.78	2.94	2.43	1.00	1.96	2	0.75	18	2035170-2	
FIGURE 1	1.50-1.85	3.09	1.78	2.94	2.23	0.80	1.82	2	0.35-0.50	20-22	2035170-1	
REELING DIRECTION	INSULATION DIAMETER	T	S	R	L	K	J	FINISH	mm ²	AWG	PART NUMBER	

THIS DRAWING IS A CONTROLLED DOCUMENT.					DWN	H. MOLL	12MAR2008		TE Connectivity						
TOLERANCES UNLESS OTHERWISE SPECIFIED:					CHK	F. KINSEY	12MAR2008								
DIMENSIONS:					APVD	C. SCHMID	27AUG2009		NAME	CONTACT, FEMALE, 0.64mm, CuNiSi, SIDE ORIENTATION, Sn PLATE					
mm					PRODUCT SPEC										
	0 PLC	±			APPLICATION SPEC			SIZE	CAGE CODE	DRAWING NO	RESTRICTED TO				
	1 PLC	±													
	2 PLC	±	±0.15												
	4 PLC	±													
ANGLES			±		114-13183			A1	00779	C=2035170	-				
FINISH			-		0.23g										
MATERIAL			-		CUSTOMER DRAWING			SCALE	15:1	SHEET	1	OF	1	REV	C
			-												
			-												
			-												
			-												
			-												
			-												
			-												
			-												
			-												
			-												
			-												
			-												
			-												
			-												
			-												
			-												
			-												
			-												
			-												
			-												
			-												
			-												
			-												
			-												
			-												
			-												
			-												
			-												
			-												
			-												
			-												
			-												
			-												
			-												
			-												
			-												
			-												
			-												
			-												
			-												
			-												
			-												
			-												
			-												
			-												
			-												
			-												
			-												
			-												
			-												
			-												
			-												
			-												
			-												
			-												
			-												
			-												
			-												
			-												
			-												
			-												
			-												
			-												
			-												
			-												
			-												
			-												
			-												
			-												
			-												
			-												
			-												
			-												
			-												
			-												
			-												
			-												
			-												
			-												
			-												
			-												
			-												
			-												
			-												
			-												
			-												
			-												
			-												
			-												
			-												</

Mouser Electronics

Authorized Distributor

Click to View Pricing, Inventory, Delivery & Lifecycle Information:

[TE Connectivity:](#)

[2035170-3](#)