

THIS DRAWING IS UNPUBLISHED.

RELEASED FOR PUBLICATION

© COPYRIGHT — By —

ALL RIGHTS RESERVED.

LOC

	DIST
--	------

REVISIONS

AF

50

	F
--	---

LTR

DESCRIPTION

DATE _____

	DWN
--	-----

	APVD
--	------

A

RELEASED PER ECO 13-017563

	08NOV13
--	---------

JR

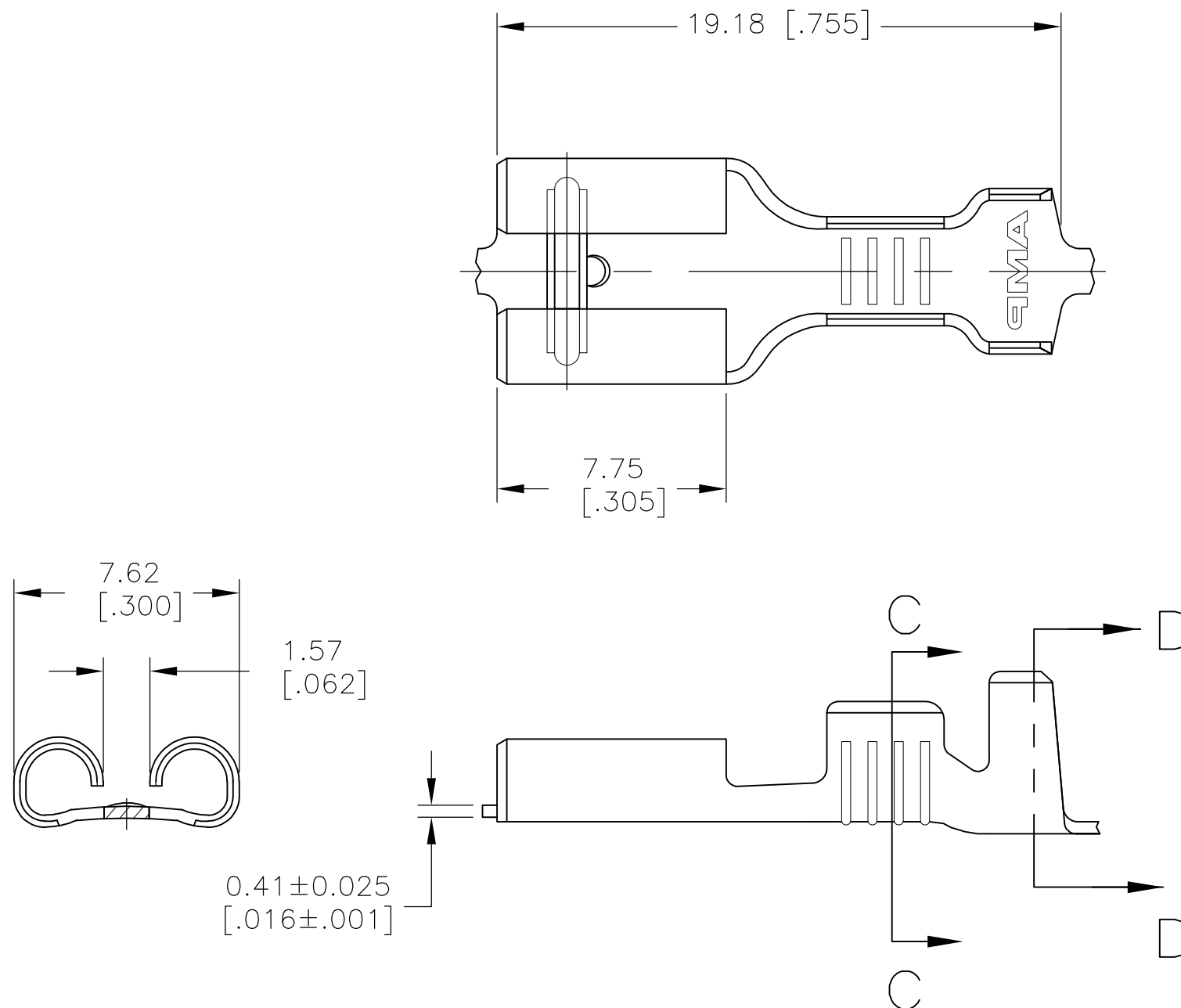
	PD
--	----

1 CONTINUOUS STRIP ON REELS


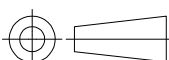
2 WIRE SIZE IS #18-#14 AWG

3 INSULATION RANGE IS 3.05-4.32 [.120-.170] DIA

4 MATING TAB THK IS 0.81±0.025 [.032±.001]



TIN PLATE	1742971-4
NONE	1742971-3
FINISH	PART NO.

THIS DRAWING IS A CONTROLLED DOCUMENT.		DWN JR RUTH		25MAR2013		 TE Connectivity	
DIMENSIONS: MM [INCHES]		CHK PETE DESANTIS		25MAR13			
		APVD PETE DESANTIS		25MAR13			
		TOLERANCES UNLESS OTHERWISE SPECIFIED:		NAME RECEPTACLE, FASTON, LOW-INSERTION, .250 SERIES —			
		0 PLC ± — 1 PLC ± — 2 PLC ± 0.25 [.010] 3 PLC ± — 4 PLC ± — ANGLES ± —					
MATERIAL BRASS		FINISH SEE TABLE		PRODUCT SPEC —		APPLICATION SPEC —	
		WEIGHT —		SIZE A3	CAGE CODE 00779	DRAWING NO C-1742971	RESTRICTED TO —
CUSTOMER DRAWING						SCALE 5:1	SHEET 1 OF 1
						REV A	

Mouser Electronics

Authorized Distributor

Click to View Pricing, Inventory, Delivery & Lifecycle Information:

[TE Connectivity:](#)

[1742971-3 \(Mouser Reel\)](#) [1742971-3 \(Cut Strip\)](#)