

4

3

2

1

THIS DRAWING IS UNPUBLISHED.

RELEASED FOR PUBLICATION

COPYRIGHT - BY TYCO ELECTRONICS CORPORATION.

ALL RIGHTS RESERVED.

LOC

DIST

REVISIONS

P

LTR

DESCRIPTION

DATE

DWN

APVD

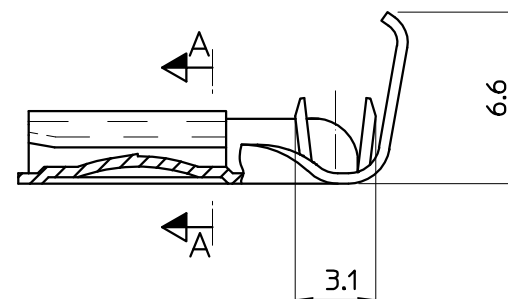
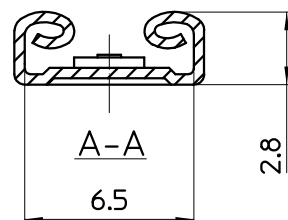
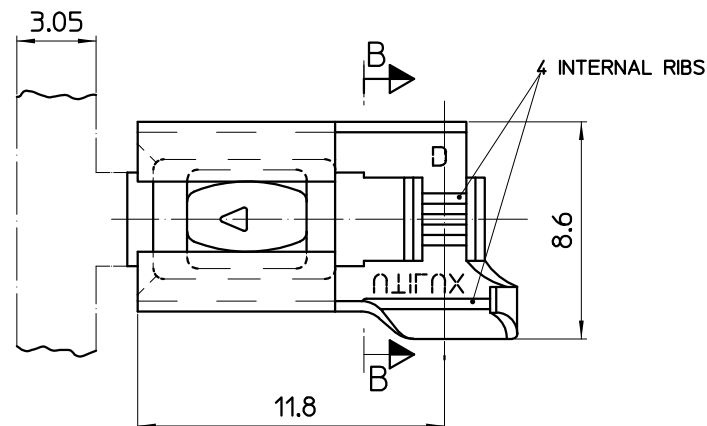
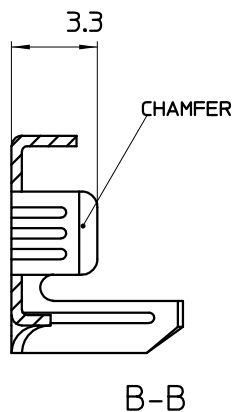
-

-

-

-

-



NOTES:

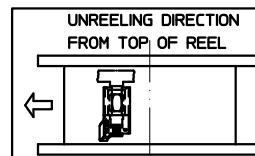
1. WIRE RANGE

CONDUCTOR: 0.5mm² - 1.0mm²

INSULATION DIAMETER: 2.2mm - 2.5mm

2. FOR CRIMPING DETAILS REFER

TO UTILUX CRIMPING CHART NO. H2591



THIS DRAWING IS A CONTROLLED DOCUMENT.

ALL DIMENSIONS IN mm:

TOLERANCES UNLESS
OTHERWISE SPECIFIED:

DIMENSION (mm)	TOLERANCE (mm)
LESS THAN 10	0.4
OVER 10 TO 30	0.5
OVER 30 TO 80	0.7
OVER 80 TO 250	1.0
ANGLES	±2°

MATERIAL

FINISH

DWN: W.RIEDE 25.10.04

CHK: H.THAH 25.10.04

APVD: W.RIEDE 25.10.04

PRODUCT SPEC:

APPLICATION SPEC:

WEIGHT:

-

tyco Tyco Electronics Corporation
Electronics AUSTRALIA

NAME: RECEPTACLE, FLAG QC 6.3

SIZE	CAGE CODE	DRAWING NO	RESTRICTED TO
A3		©-1627100	-

CUSTOMER DRAWING

SCALE 5:1

SHEET 1 OF 1 REV 0

Mouser Electronics

Authorized Distributor

Click to View Pricing, Inventory, Delivery & Lifecycle Information:

[TE Connectivity:](#)

[1-1627100-1](#)