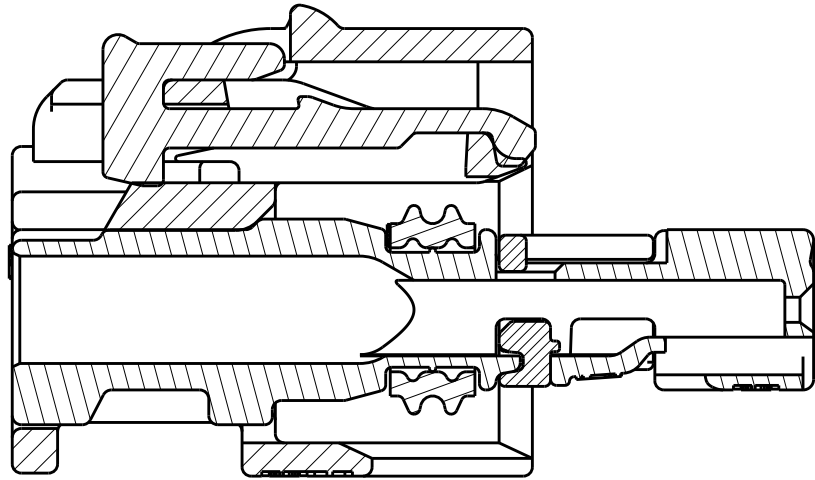
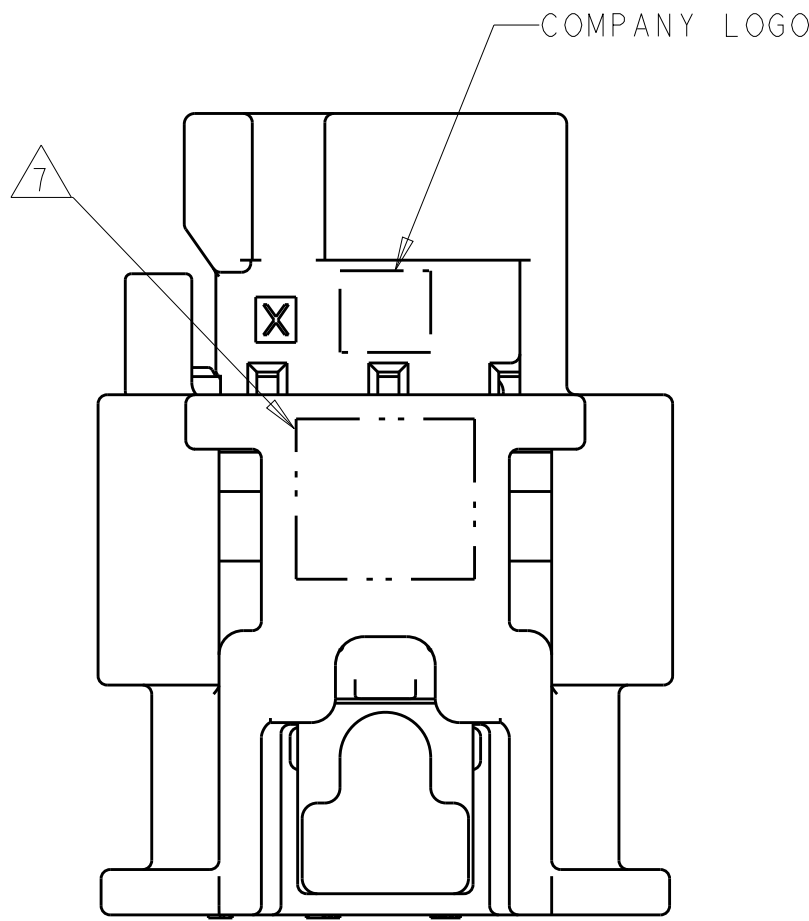
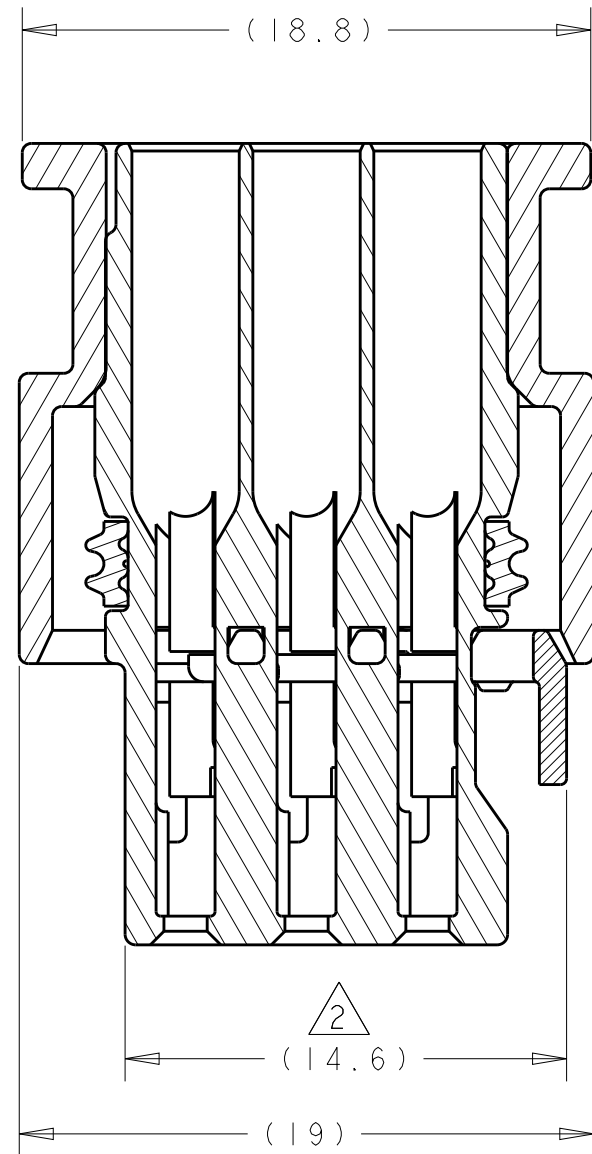


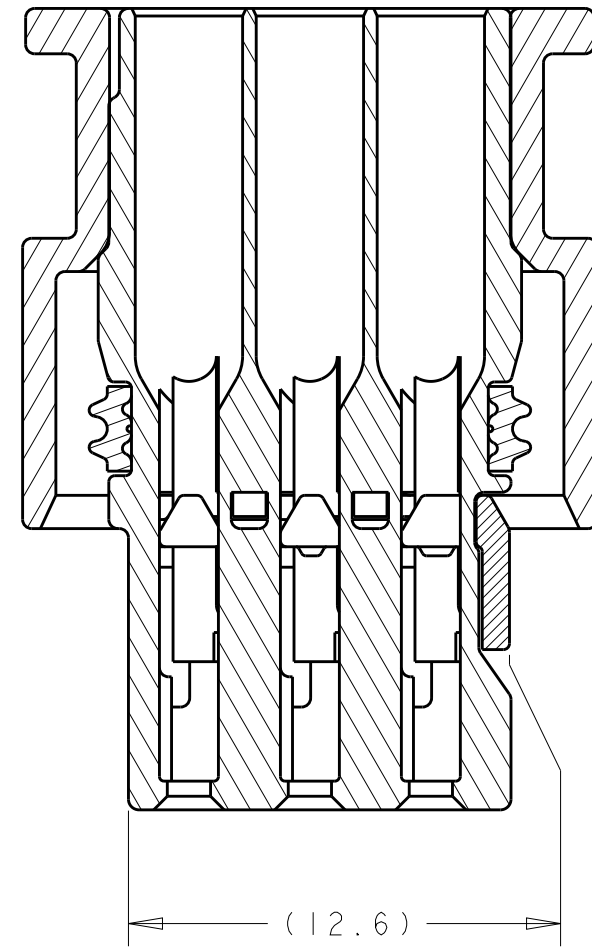
1. PART NUMBER 1488991-5 SHOWN ON DRAWING.
2. TPA AND CPA (WHEN APPLICABLE) ARE SHIPPED IN THEIR PRE-LATCHED POSITIONS. SEE INSTRUCTION SHEET 408-8928 FOR DIRECTIONS ON MOVING THE CPA AND TPA TO THE PRE-LATCHED POSITION, IF NECESSARY.
3. TERMINALS SOLD SEPARATELY. FOR USE WITH TE CONNECTIVITY MCON 1.2mm CLEAN BODY CONTACT WITH WIRE SEAL. SEE MCON 1.2-CB (CLEAN BODY) TABLE FOR APPLICABLE PART NUMBERS.
4. APPLICABLE HEADER INTERFACE DRAWING 1488738 IS AVAILABLE UPON REQUEST. A COPY OF THIS DRAWING CAN BE OBTAINED FROM THE TE CONNECTIVITY PRODUCT MANAGER, VIA YOUR TE CONNECTIVITY SALES REPRESENTATIVE OR CUSTOMER SERVICE.
5. MINIMUM FEED THROUGH CONDITION WITH 0.5mm CLEARANCE ALL AROUND.
6. A "X" IN THIS TABLE INDICATES THAT THE TERMINAL CAVITY IS BLOCKED AND WILL NOT ALLOW INSETION OF THE MATING TERMINAL. A "O" IN THIS TABLE INDICATES THAT THE TERMINAL CAVITY IS OPEN AND WILL ALLOW INSERTION OF THE MATING TERMINAL.
7. TRACEABILITY PRINTED IN THIS LOCATION AT ASSEMBLY.
8. CONNECTOR SYSTEM MEETS THE REQUIREMENTS OF USCAR-2, REVISION 3, EXCEPT WHERE NOTED:
TPA ENGAGE AND DISENGAGE FORCES ARE 10N MIN - 30N MAX.
PRIMARY TERMINAL-CONNECTOR FORCE IS 30N MIN.
SECONDARY TERMINAL-CONNECTOR FORCE IS 75N MIN.
CPA ENGAGE AND DISENGAGE FORCES (WITH MATING CONNECTOR) ARE 30N MAX.
CPA REMOVAL FORCE FROM CONNECTOR IS 15N MIN.
9. FOR OPTIONAL TERMINAL CAVITY BLOCKING, USE TE CONNECTIVITY BLIND PLUG PART NUMBER: 967056-1.
10. TERMINAL 1670146-X REPLACES 1418847-X
11. REFERENCE ISOMETRIC VIEWS ON SHEET 2.



SECTION B-B
SHOWN WITH CPA (WHEN APPLICABLE)
IN IT'S LATCHED POSITION
FOR REFERENCE ONLY

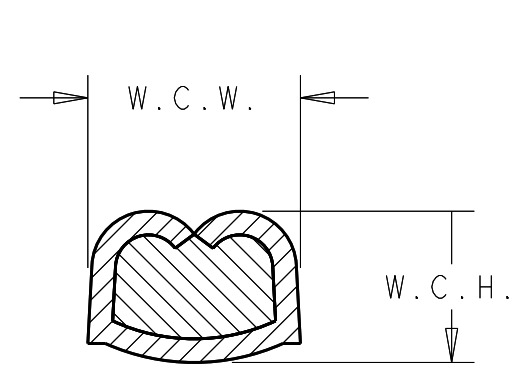
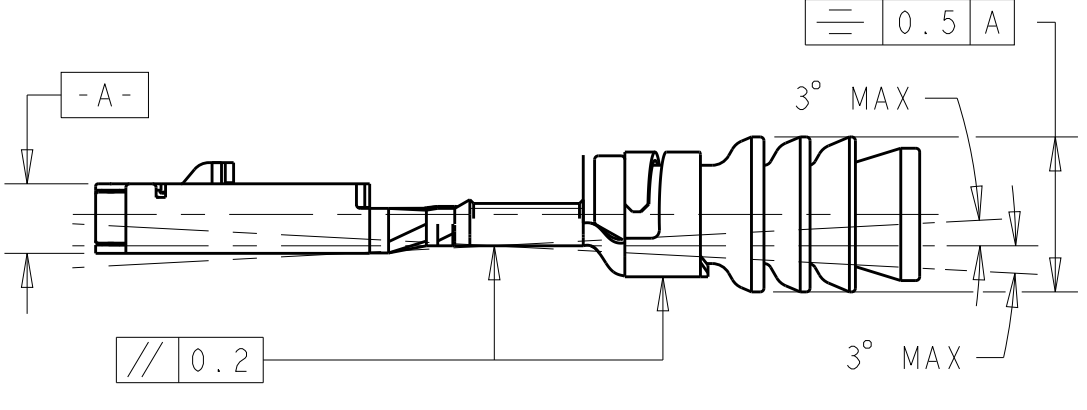
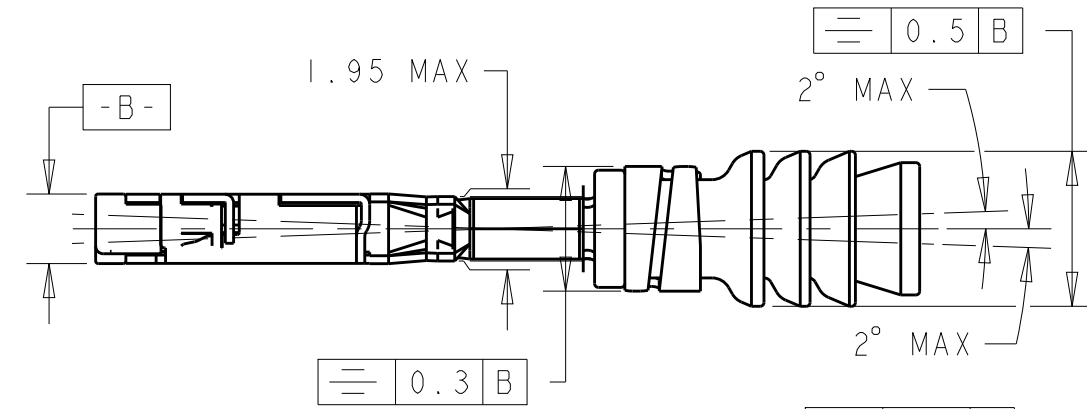


SECTION A-A

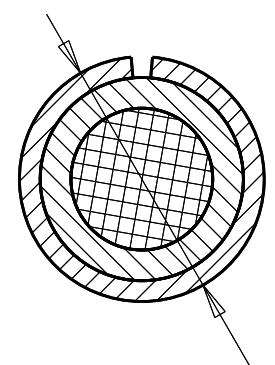


SECTION A-A
SHOWN WITH TPA
IN IT'S LATCHED POSITION
FOR REFERENCE ONLY

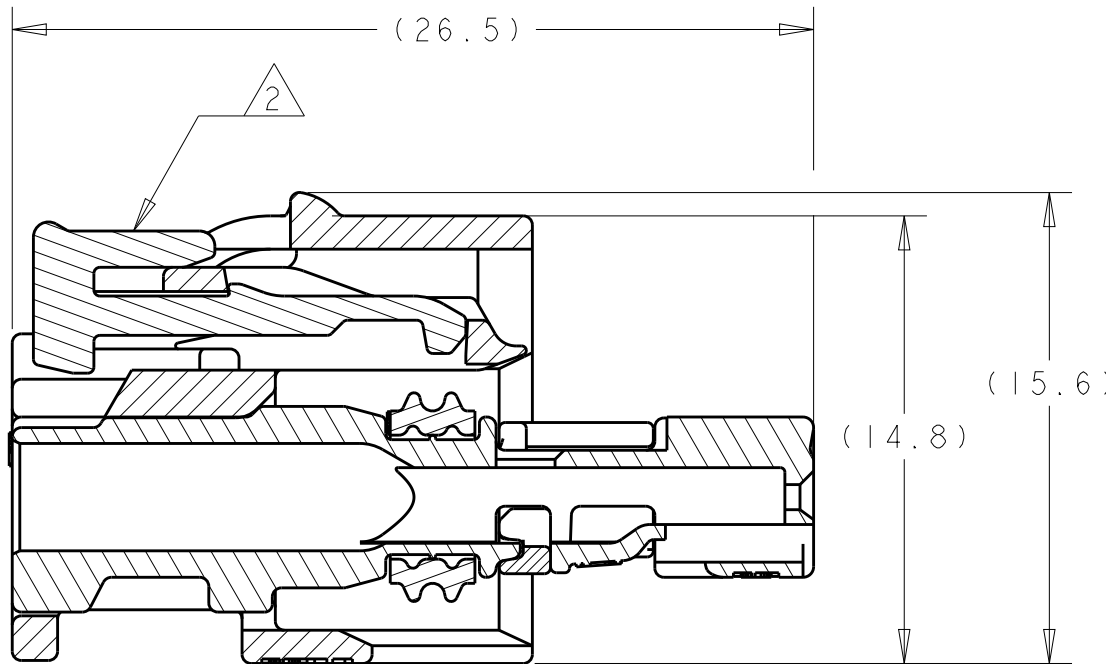
REVISIONS					
P.	LTR.	DESCRIPTION	DATE	DWN	APVD
F8		REVISED PER ECO-13-001652	12FEB2013	DLD	SLM
F9		REVISED PER ECO-15-002909	25FEB2015	DLD	SLM
F10		REVISED PER ECO-15-011380	05AUG2015	DLD	SLM



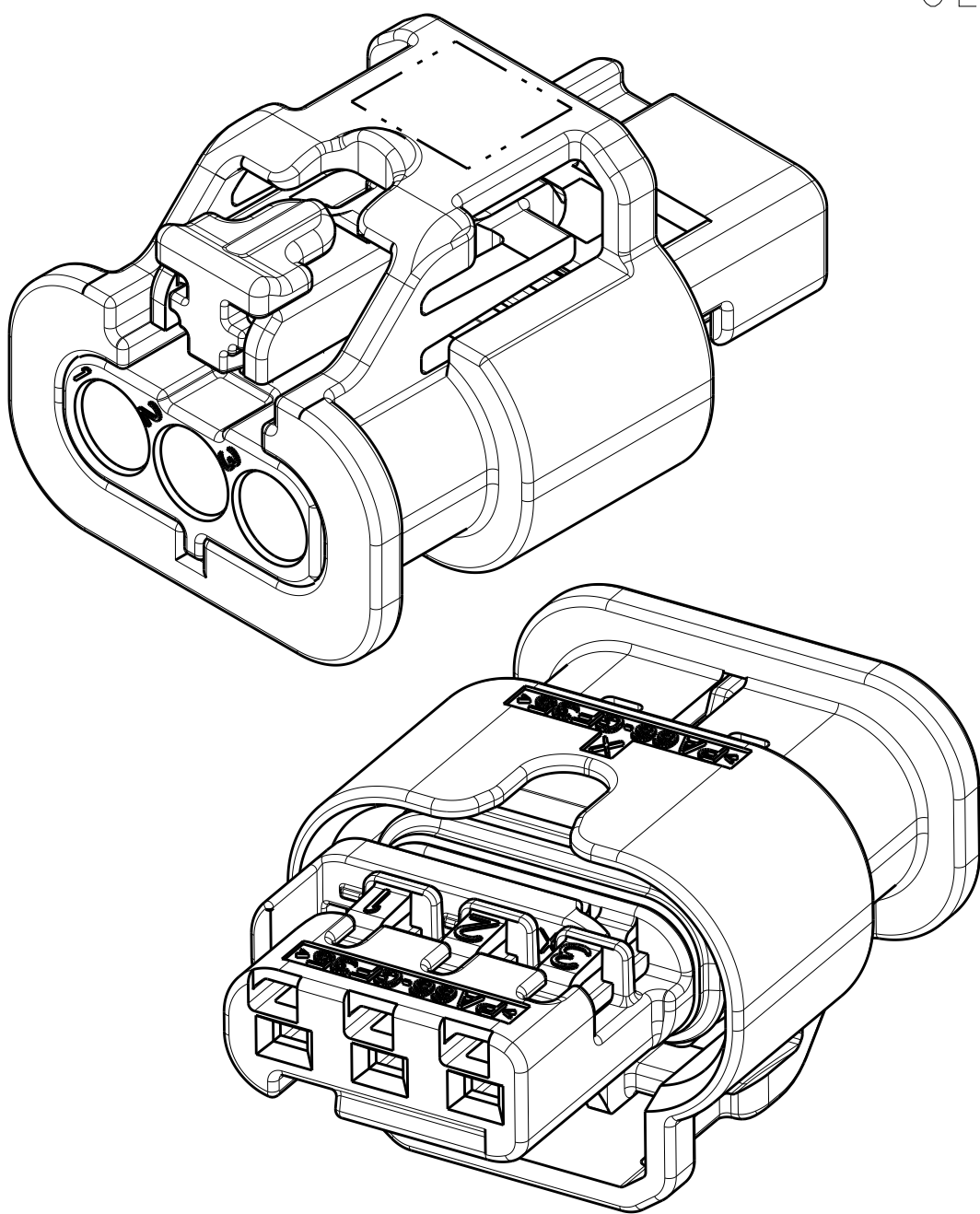
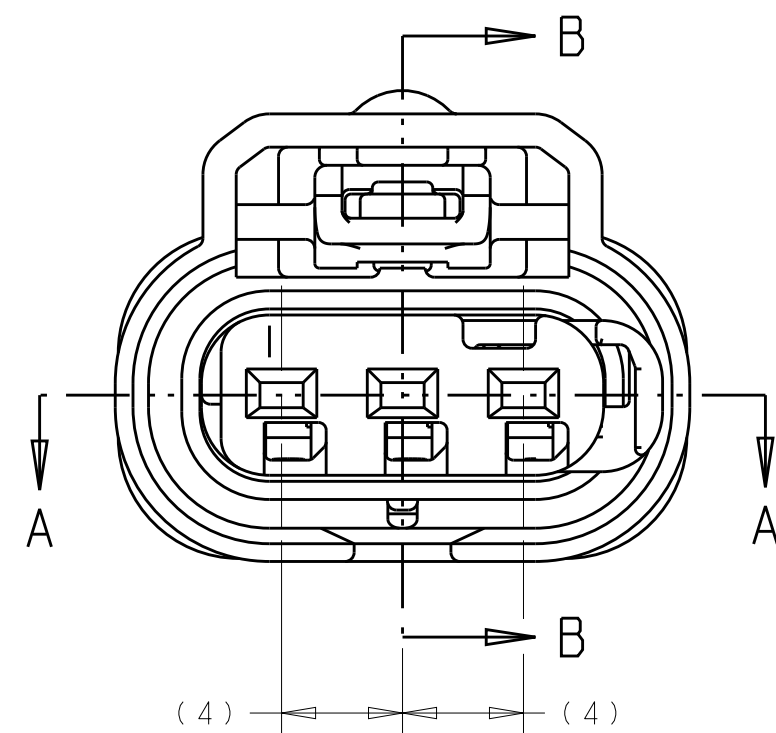
WIRE CRIMP
DIMENSIONS



INSULATION CRIMP
DIMENSIONS


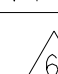




SECTION B-B



ISOMETRIC VIEWS

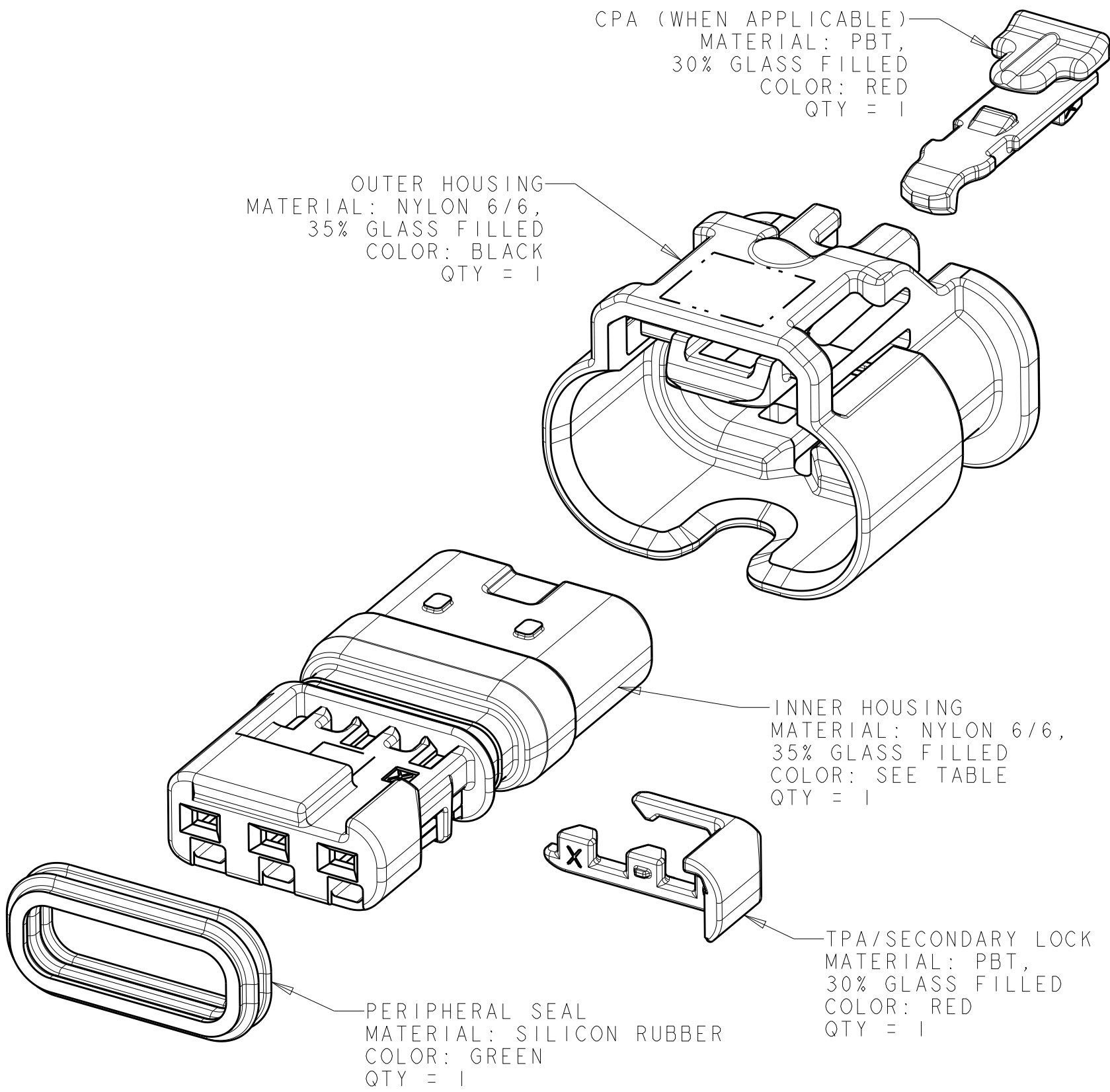
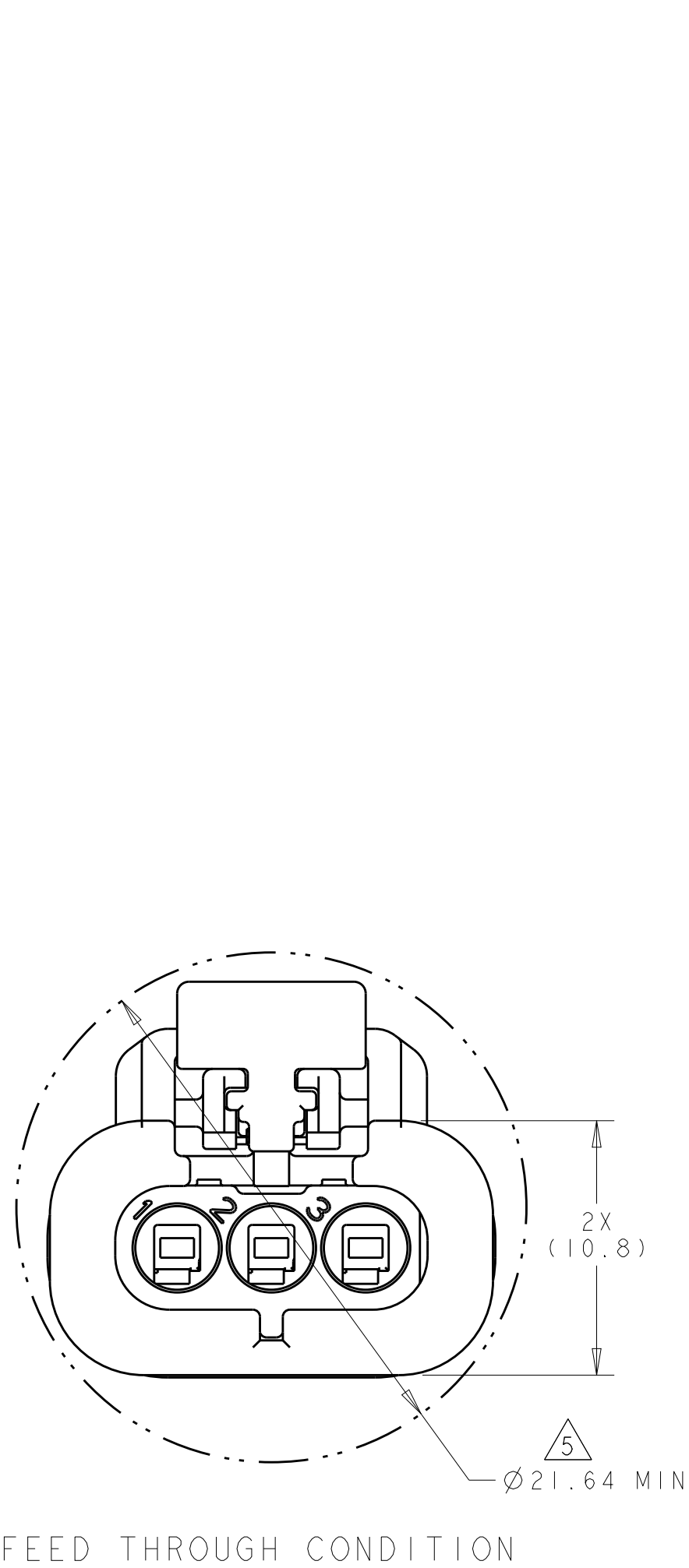
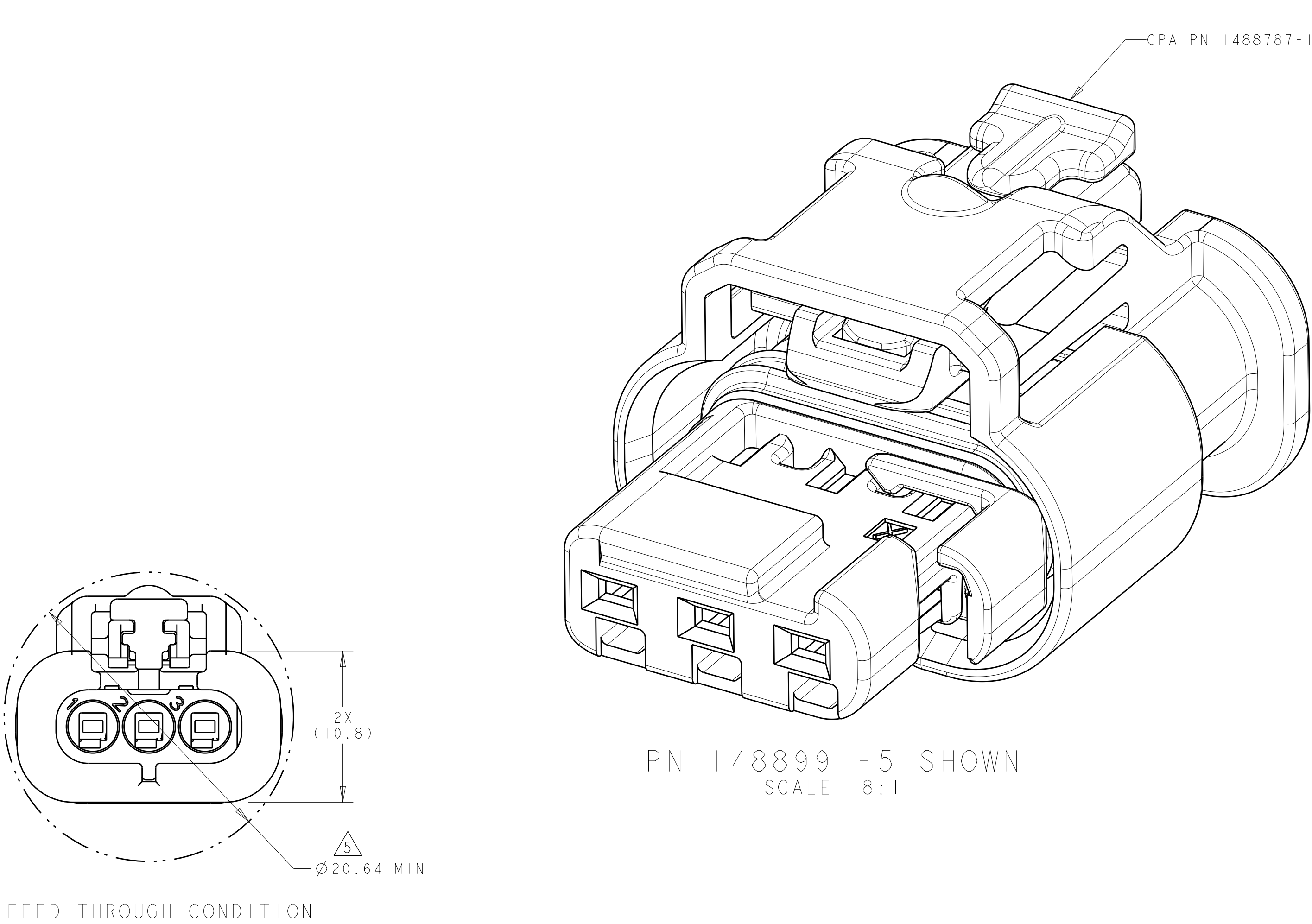
MCON 1.2-CB (CLEAN BODY)							
1418844-3	SILVER	3.3 ±0.3	22	1.2 TO 1.4	0.86 ±0.03	1.27 ±0.05	3.15±0.05
1418844-2	GOLD						967067-2
1418844-1	TIN						
1670146-3	SILVER	3.6 ±0.3	20	1.4 TO 1.9	0.84 ±0.03	1.57 ±0.05	3.25±0.05
1670146-2	GOLD						967067-1
1670146-1	TIN						
1418850-3	SILVER		18 16	1.11 ±0.05 1.31 ±0.05			
1418850-2	GOLD	3.6 ±0.3	18 16	1.11 ±0.05 1.31 ±0.05	1.78 ±0.05		3.35±0.05
1418850-1	TIN		18 16	1.11 ±0.05 1.31 ±0.05			
PART NUMBER	PLATING	WIRE STRIP LENGTH	AWG	INSL. RANGE	W.C.H.	W.C.W.	I.C.D.
							WIRE SEAL PART NUMBER

RELEASED	2138907-1	GRAY	D	O	O	O	4-1488991-4	
RELEASED	2138907-1	BLUE	C	O	O	O	4-1488991-3	
RELEASED	2138907-1	NATURAL	B	O	O	O	4-1488991-2	
RELEASED	2138907-1	BLACK	A	O	O	O	4-1488991-1	
NOT RELEASED	1488787-1	GRAY	D	X	O	O	3-1488991-2	
	1488787-1	BLUE	C				3-1488991-1	
	1488787-1	NATURAL	B				3-1488991-0	
	1488787-1	BLACK	A				2-1488991-9	
RELEASED	N/A	GRAY	D	X	O	O	2-1488991-8	
NOT RELEASED	N/A	BLUE	C				2-1488991-7	
NOT RELEASED	N/A	NATURAL	B				2-1488991-6	
RELEASED	N/A	BLACK	A				2-1488991-5	
NOT RELEASED	1488787-1	GRAY	D	O	X	O	2-1488991-4	
	1488787-1	BLUE	C				2-1488991-3	
	1488787-1	NATURAL	B				2-1488991-2	
	1488787-1	BLACK	A				2-1488991-1	
NOT RELEASED	N/A	GRAY	D	O	X	O	2-1488991-0	
	N/A	BLUE	C				1-1488991-9	
	N/A	NATURAL	B				1-1488991-8	
	N/A	BLACK	A				1-1488991-7	
NOT RELEASED	1488787-1	GRAY	D	O	O	X	1-1488991-6	
	1488787-1	BLUE	C				1-1488991-5	
	1488787-1	NATURAL	B				1-1488991-4	
	1488787-1	BLACK	A				1-1488991-3	
NOT RELEASED	N/A	GRAY	D	O	O	X	1-1488991-2	
	N/A	BLUE	C				1-1488991-1	
	N/A	NATURAL	B				1-1488991-0	
	N/A	BLACK	A				1488991-9	
RELEASED	1488787-1	GRAY	D	O	O	O	1488991-8	
RELEASED	1488787-1	BLUE	C				1488991-7	
RELEASED	1488787-1	NATURAL	B				1488991-6	
RELEASED	1488787-1	BLACK	A				1488991-5	
RELEASED	N/A	GRAY	D	O	O	O	1488991-4	
RELEASED	N/A	BLUE	C				1488991-3	
RELEASED	N/A	NATURAL	B				1488991-2	
RELEASED	N/A	BLACK	A				1488991-1	
STATUS	CPA		INNER HOUSING		TERMINAL CAVITY CONFIGURATION			PART NUMBER
								

THIS DRAWING IS A CONTROLLED DOCUMENT.		DWN M. FORISKA 08MAR2004	 TE Connectivity		
DIMENSIONS:		CHK G. MARTIN 08MAR2004	NAME		
mm		APVD G. MARTIN 08MAR2004	CONNECTOR ASSEMBLY, FEMALE, 3 POSITION, SEALED, 1.2mm (STANDARD LATCH VERSION)		
		PRODUCT SPEC			
		APPLICATION SPEC			
		IS 408-8928			
		SIZE			
		CAGE CODE			
		DRAWING NO			
		RESTRICTED TO			
		WEIGHT			
3.0 GRAMS					
CUSTOMER DRAWING					
SCALE					
4:1					
SHEET					
1 OF 2					
REV					
F10					

REVISIONS					
P.	LTR.	DESCRIPTION	DATE	DWN.	APVD.
-	-	SEE SHEET 1	-	-	-

ISOMETRIC VIEWS



EXPLODED ISOMETRIC VIEW

THIS DRAWING IS A CONTROLLED DOCUMENT.		DWN M. FORISKA 08MAR2004	TE Connectivity	
DIMENSIONS:		CHK G. MARTIN 08MAR2004		
mm	TOLERANCES UNLESS OTHERWISE SPECIFIED:	APVD G. MARTIN 08MAR2004	NAME	CONNECTOR ASSEMBLY, FEMALE, 3 POSITION, SEALED, 1.2mm (STANDARD LATCH VERSION)
	0 PLC ±.3	PRODUCT SPEC	SIZE	CAGE CODE
	1 PLC ±0.10	APPLICATION SPEC	DRAWING NO	RESTRICTED TO
	2 PLC ±.1	IS 408-8928	100779	1488991
	3 PLC ±.1	WEIGHT	3.0 GRAMS	-
MATERIAL	FINISH	CUSTOMER DRAWING	SCALE	4:1
SEE TABLE	-		SHEET	2 OF 2

Mouser Electronics

Authorized Distributor

Click to View Pricing, Inventory, Delivery & Lifecycle Information:

[TE Connectivity:](#)

[1488991-3](#)