

4

3

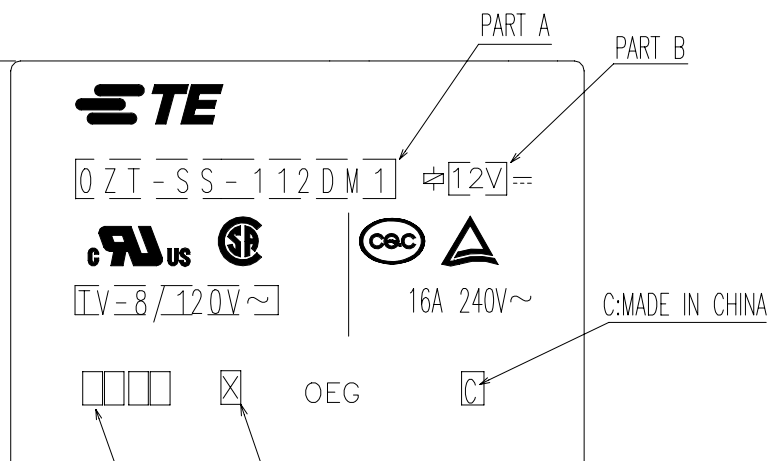
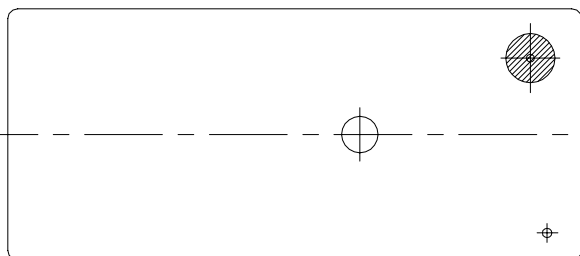
2

1

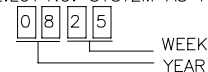
© - TE Connectivity. All Rights Reserved.

REVISIONS

P	LTR	DESCRIPTION	DATE	DWN	APVD
	J	OBSOLETE SOME PNs	ECN-22-148885	14-JUL-22	XR.L K.T



NOTES:
 1. TERMINAL DIMENSION IS NOT INCLUDING SOLDER TIP.
 2. LOT NO. SYSTEM AS FOLLOWING:



3. GENERAL TOLERANCE AS FOLLOW:

TOLERANCE	
0~0.99mm	±0.1
1mm~2.99mm	±0.2
3mm MIN.	±0.3

4. FOR THE TIN-PLATING OF THE PINS:
 +0.1mm FOR WIDTH, THICKNESS AND DIAMETER.
 +0.5mm FOR LENGTH.

⌀ 20.4

⌀ 4.1

0.6

0.3

0.3

1.2

1.2

0.6

1.85

20

5.0

2.3

7.5

12.8

29.2

THIS DRAWING IS A CONTROLLED DOCUMENT.		DWN LIU, DAVEY	13MAY2009	TE Connectivity Ltd.	
DIMENSIONS: mm		CHK BANGHUA, YU	-		
TOLERANCES UNLESS OTHERWISE SPECIFIED:		APVD SUNNY, ZHANG	-	PRODUCT SPEC	
0 PLC ± - 1 PLC ± - 2 PLC ± - 3 PLC ± - 4 PLC ± - ANGLES ± -		APPLICATION SPEC		OZT-D/LM1 CUSTOMER DRAWING	
MATERIAL		FINISH	-	SIZE A3	CAGE CODE 00779
		DRAWING NO C=1461254-2		RESTRICTED TO	
		WEIGHT		-	
		CUSTOMER DRAWING		SCALE 4:1	SHEET 1 OF 2
				REV J	

4

3

2

1

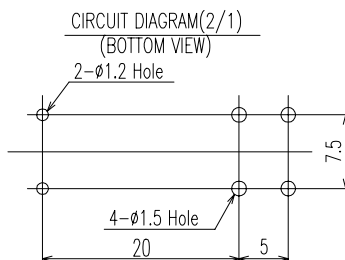
© - TE Connectivity. All Rights Reserved.

REVISIONS

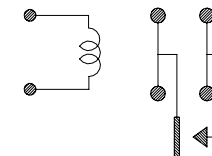
P	LTR	DESCRIPTION	DATE	DWN	APVD
	G		16-DEC-14		

OBSOLETE	9-1419145-2	OZT-SH-112LM1	OZT-SH-112LM1	12V	32	Ⓟ
OBSOLETE	2-1419124-7	OZT-SH-124LM1	OZT-SH-124LM1	24V	31	Ⓟ
OBSOLETE	3-1419124-4	OZT-SS-148LM1	OZT-SS-148LM1	48V	30	Ⓟ
OBSOLETE	3-1419124-3	OZT-SS-124LM1	OZT-SS-124LM1	24V	29	Ⓟ
OBSOLETE	3-1419124-1	OZT-SH-112LM1	OZT-SS-112LM1	12V	28	Ⓟ
OBSOLETE	1-1461392-2	OZT-SH-148LM1	OZT-SH-148LM1	48V	27	Ⓟ
OBSOLETE	1-1461392-1	OZT-SH-148DM1	OZT-SH-148DM1	48V	26	Ⓟ
ACTIVE	1-1461392-0	OZT-SH-124LM1	OZT-SH-124LM1	24V	25	Ⓟ
OBSOLETE	1461392-9	OZT-SH-124DM1	OZT-SH-124DM1	24V	24	Ⓟ
OBSOLETE	1461392-8	OZT-SH-112LM1	OZT-SH-112LM1	12V	23	Ⓟ
OBSOLETE	1461392-7	OZT-SH-112DM1	OZT-SH-112DM1	12V	22	Ⓟ
OBSOLETE	1461392-6	OZT-SH-109LM1	OZT-SH-109LM1	9V	21	Ⓟ
OBSOLETE	1461392-5	OZT-SH-109DM1	OZT-SH-109DM1	9V	20	Ⓟ
OBSOLETE	1461392-4	OZT-SH-106LM1	OZT-SH-106LM1	6V	19	Ⓟ
OBSOLETE	1461392-3	OZT-SH-106DM1	OZT-SH-106DM1	6V	18	Ⓟ
OBSOLETE	1461392-2	OZT-SH-105LM1	OZT-SH-105LM1	5V	17	Ⓟ
OBSOLETE	1461392-1	OZT-SH-105DM1	OZT-SH-105DM1	5V	16	Ⓟ
OBSOLETE	1-1461254-0	OZT-SS-148DM1	OZT-SS-148DM1	48V	15	Ⓟ
ACTIVE	1461254-9	OZT-SS-124DM1	OZT-SS-124DM1	24V	14	Ⓟ
OBSOLETE	1461254-8	OZT-SS-109LM1	OZT-SS-109LM1	9V	13	Ⓟ
OBSOLETE	1461254-7	OZT-SS-109DM1	OZT-SS-109DM1	9V	12	Ⓟ
OBSOLETE	1461254-6	OZT-SS-106LM1	OZT-SS-106LM1	6V	11	Ⓟ
OBSOLETE	1461254-5	OZT-SS-106DM1	OZT-SS-106DM1	6V	10	Ⓟ
OBSOLETE	1461254-4	OZT-SS-105LM1	OZT-SS-105LM1	5V	9	Ⓟ
OBSOLETE	1461254-3	OZT-SS-105DM1	OZT-SS-105DM1	5V	8	Ⓟ
OBSOLETE	1461254-2	OZT-SS-112DM1	OZT-SS-112DM1	12V	7	Ⓟ
OBSOLETE	1461254-1	OZT-SS-103DM1	OZT-SS-103DM1	3V	6	Ⓟ
OBSOLETE	3-1440002-8	OZT-SS-148LM1	OZT-SS-148LM1	48V	5	Ⓟ
ACTIVE	3-1440002-7	OZT-SS-124LM1	OZT-SS-124LM1	24V	4	Ⓟ
ACTIVE	3-1440002-6	OZT-SS-112LM1	OZT-SS-112LM1	12V	3	Ⓟ
OBSOLETE	3-1440002-5	OZT-SH-124LM1	OZT-SH-124LM1	24V	2	Ⓟ
OBSOLETE	3-1440002-4	OZT-SH-112LM1	OZT-SH-112LM1	12V	1	Ⓟ
PACKING SPEC.	PART STATUS	TE PART NO	DESCRIPTION	PART A	PART B	ITEM

RELAY TYPE



DRILLING DIAGRAM (BOTTOM VIEW)



		UV RESIN	UV SEAL	16
		EPOXY RESIN	SEAL	15
		Cu ALLOY	HINGE SPRING	14
		PBT	CASE	13
		MW79	MAGNETIC WIRE	12
UL94V-0		PET	BASE	11
UL94HB		PBT	BOBBIN	10
	SOLDER DIP	Cu ALLOY	COIL TERMINAL	9
UL94V-0		PPS	CARD	8
		Ag ALLOY	MOVABLE CONTACT	7
		Ag ALLOY	STATIONARY CONTACT	6
	SOLDER DIP	Cu ALLOY	MOVABLE SPRING	5
	SOLDER DIP	Cu ALLOY	NO-TERMINAL	4
	Ni PLATED	STEEL	CORE	3
	Ni PLATED	STEEL	ARMATURE	2
	Ni PLATED	STEEL	YOKE	1
INCOMBUSTIBILITY	TREATMENT	MATERIAL	DESCRIPTION	ITEM

THIS DRAWING IS A CONTROLLED DOCUMENT.		DWN LIU, DAVEY 13MAY2009	TE Connectivity Ltd.	
DIMENSIONS: mm		CHK BANGHUA, YU	NAME	
TOLERANCES UNLESS OTHERWISE SPECIFIED:		APVD SUNNY, ZHANG	OZT-D/LM1 CUSTOMER DRAWING	
0 PLC ±-		PRODUCT SPEC	SIZE	CAGE CODE
1 PLC ±-		APPLICATION SPEC	A3	00779
2 PLC ±-		WEIGHT	DRAWING NO	RESTRICTED TO
3 PLC ±-			C=1461254-2	
4 PLC ±-				
ANGLES ±-				
MATERIAL	FINISH		SCALE	SHEET
			4:1	2 of 2
CUSTOMER DRAWING			REV	J

Mouser Electronics

Authorized Distributor

Click to View Pricing, Inventory, Delivery & Lifecycle Information:

[TE Connectivity:](#)

[1-1461392-0](#)