

REVISIONS					
P	LTR	DESCRIPTION	DATE	DWN	APVD
	F1	OBSOLETE THE PN 1546119-5	29SEP2023	SP	PS

7.25	30	3PCR-30-006	3-1546099-0
7.00	29	3PCR-29-006	2-1546099-9
6.75	28	3PCR-28-006	2-1546099-8
6.50	27	3PCR-27-006	2-1546099-7
6.25	26	3PCR-26-006	2-1546099-6
6.00	25	3PCR-25-006	2-1546099-5
5.75	24	3PCR-24-006	2-1546099-4
5.50	23	3PCR-23-006	2-1546099-3
5.25	22	3PCR-22-006	2-1546099-2
5.00	21	3PCR-21-006	2-1546099-1
4.75	20	3PCR-20-006	2-1546119-0
4.50	19	3PCR-19-006	1-1546119-9
4.25	18	3PCR-18-006	1-1546099-8
4.00	17	3PCR-17-006	1-1546099-7
3.75	16	3PCR-16-006	1-1546099-6
3.50	15	3PCR-15-006	1-1546099-5
3.25	14	3PCR-14-006	1-1546099-4
3.00	13	3PCR-13-006	1-1546099-3
2.75	12	3PCR-12-006	1-1546119-7
2.50	11	3PCR-11-006	1-1546119-6
2.25	10	3PCR-10-006	1-1546119-5
2.00	9	3PCR-09-256	1-1546119-4
2.00	9	3PCR-09-006	1-1546119-3
1.75	8	3PCR-08-310	3-1546099-2
1.75	8	3PCR-08-006	1-1546119-2
1.50	7	3PCR-07-006	1-1546119-0
1.25	6	3PCR-06-302	3-1546099-1
1.25	6	3PCR-06-006	1-1437646-2
1.00	5	3PCR-05-006	1437646-9
.75	4	3PCR-04-006	1546119-8
.50	3	3PCR-03-006	1546099-1
.25	2	3PCR-02-006	1546119-5
DIM "A"	NO OF POS	CATALOG NUMBER	TE PART NO.

DWN	S SCHLEGEL	4/22/03
CHK	S. YODER	6/18/02
APVD	S. YODER	6/18/02
PRODUCT SPEC		
APPLICATION SPEC		
WEIGHT		
CUSTOMER DRAWING		

THIS DRAWING IS A CONTROLLED DOCUMENT.		DWN S SCHLEGEL 4/22/03		TE Connectivity	
DIMENSIONS: INCHES		CHK S. YODER 6/18/02			
TOLERANCES UNLESS OTHERWISE SPECIFIED:		APVD S. YODER 6/18/02		NAME	
0 PLC ± -		PRODUCT SPEC		3PCR-XX-006 ASSEMBLY	
1 PLC ± -		APPLICATION SPEC		SIZE CAGE CODE DRAWING NO RESTRICTED TO	
2 PLC ± .02		WEIGHT		A300779C-1437646-9	
3 PLC ± .010		CUSTOMER DRAWING		SCALE NTS SHEET 1 OF 1 REV F1	
4 PLC ± -					
ANGLES ± -					
FINISH					
MATERIAL					

MATERIAL:
HOUSING: THERMOPLASTIC, UL94V-0, BLACK.
TERMINAL: BRIGHT TIN PLATED, COPPER ALLOY.
M3 SCREWS: ZINC PLATED STEEL.
ELECTRICAL:
RATED CURRENT: 10A.
OPERATING VOLTAGE: 300V.
WIRE RANGE: 16-30 AWG.

MECHANICAL:
PITCH (TERMINAL SPACING): .250"
OPERATING TEMP.: 120°C MAX.

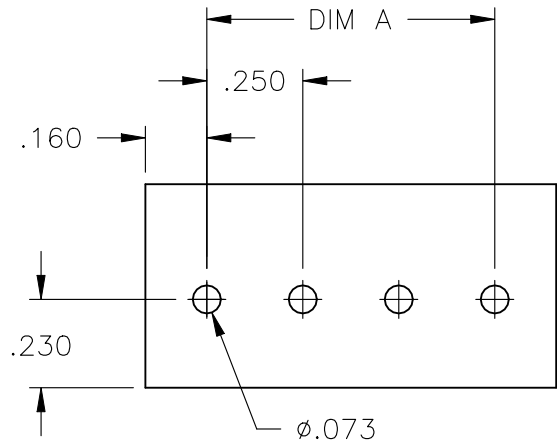
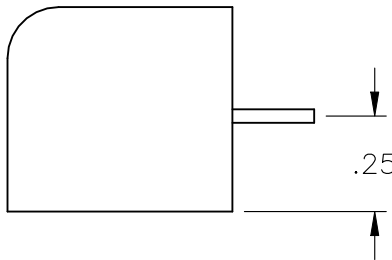
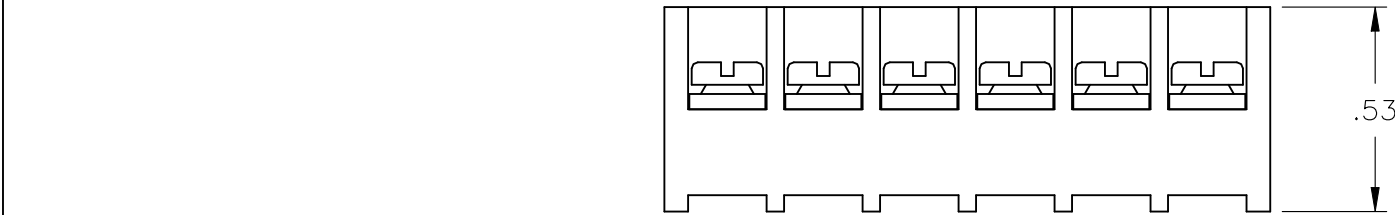
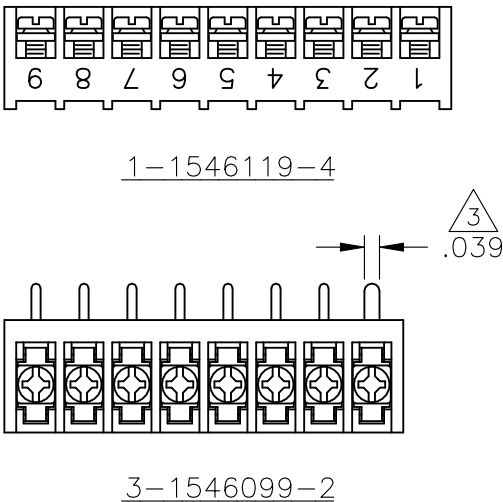
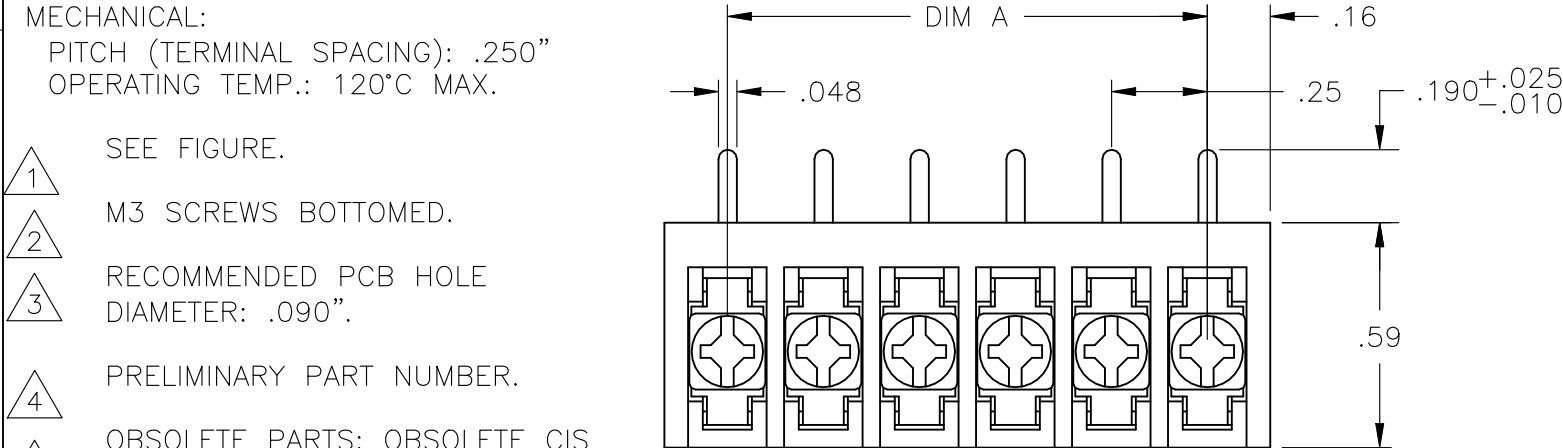
SEE FIGURE.

M3 SCREWS BOTTOMED.

RECOMMENDED PCB HOLE DIAMETER: .090".

PRELIMINARY PART NUMBER.

OBSOLETE PARTS: OBSOLETE CIS STREAMLINING PER D.RENAUD/D.SINISI



RECOMMENDED PCB LAYOUT

Mouser Electronics

Authorized Distributor

Click to View Pricing, Inventory, Delivery & Lifecycle Information:

[TE Connectivity:](#)

[1-1546119-0](#)