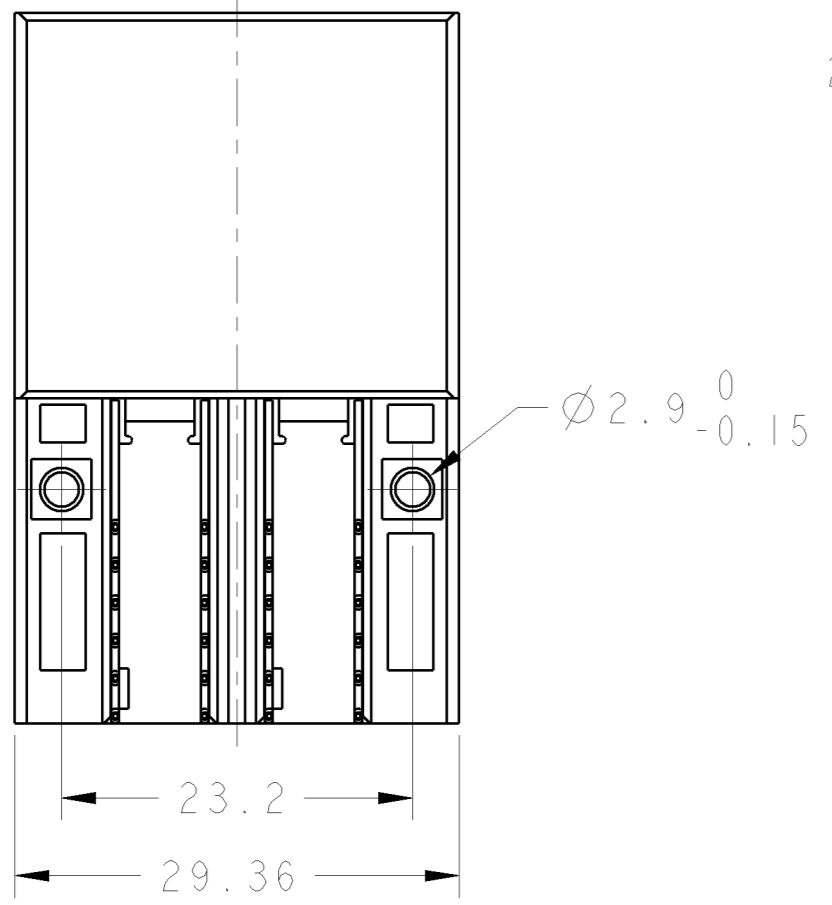
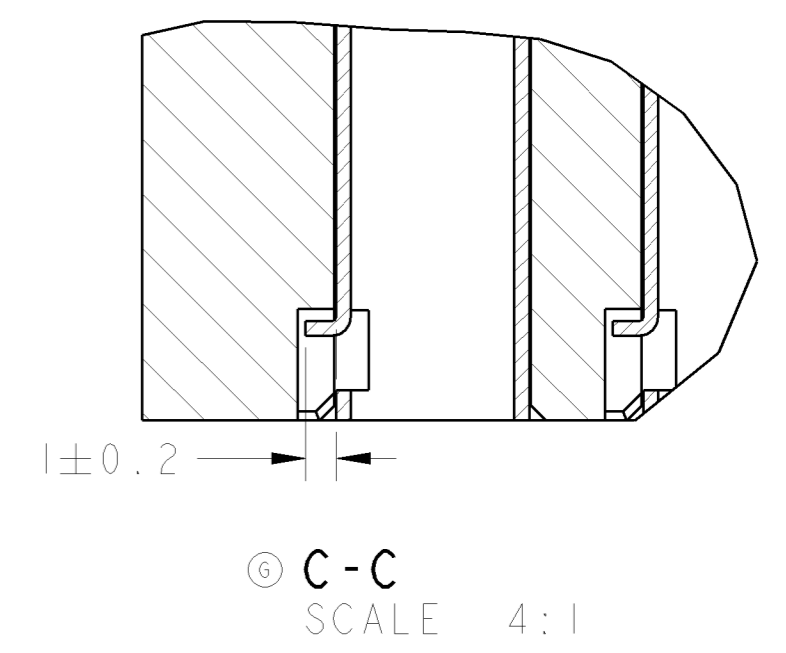
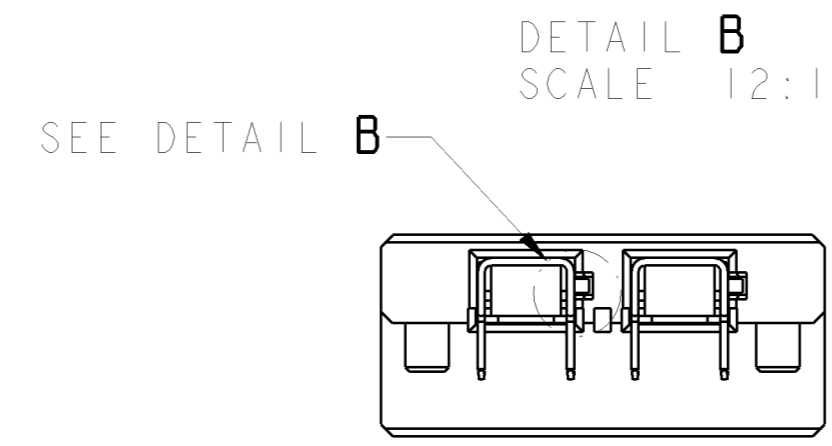
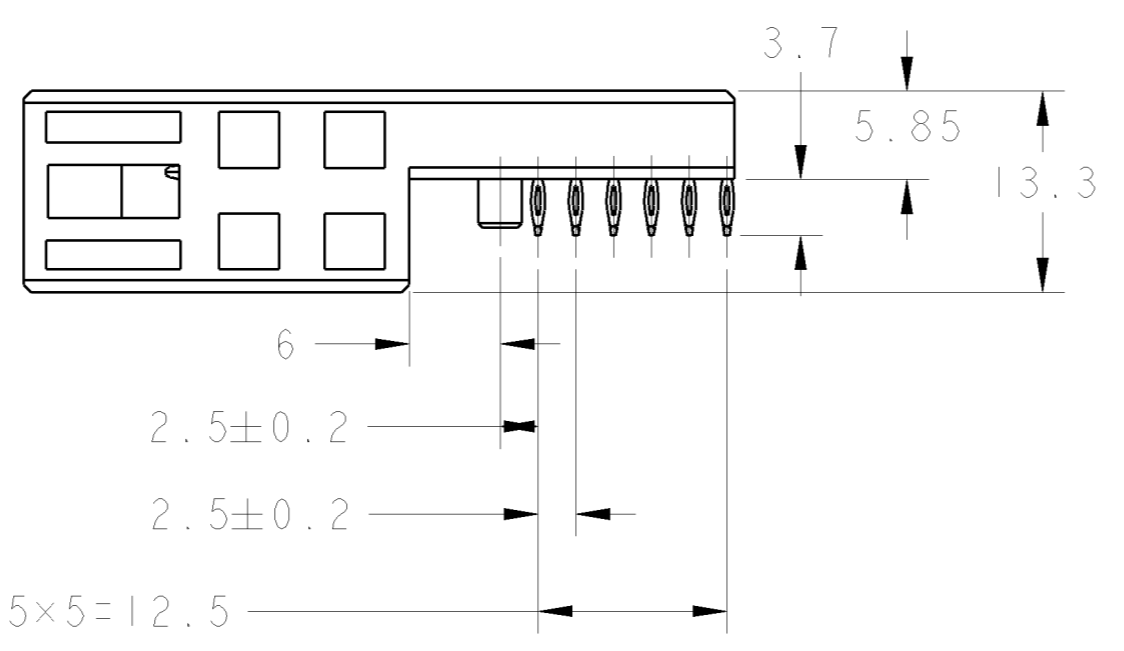
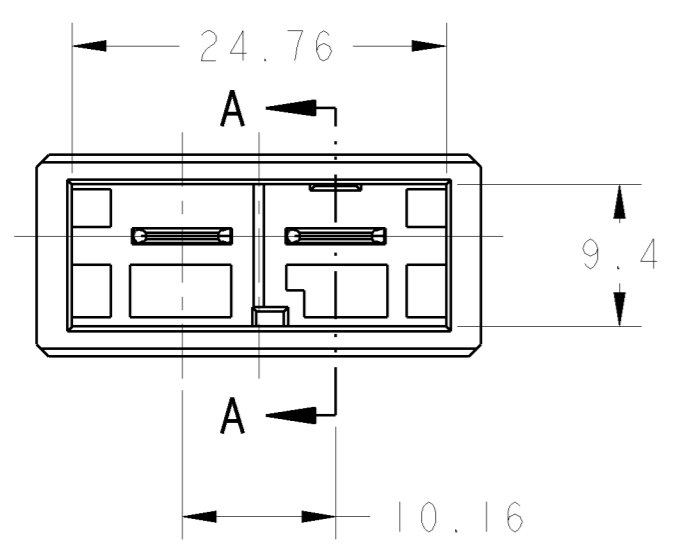
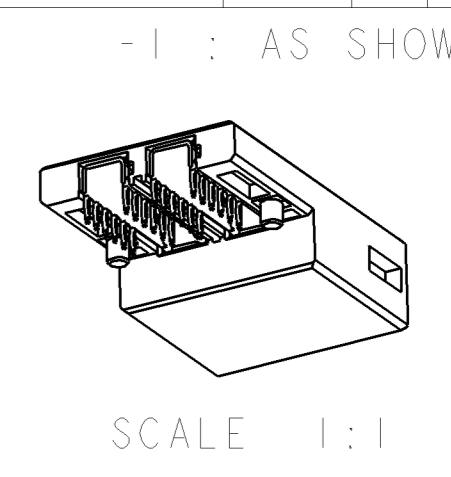
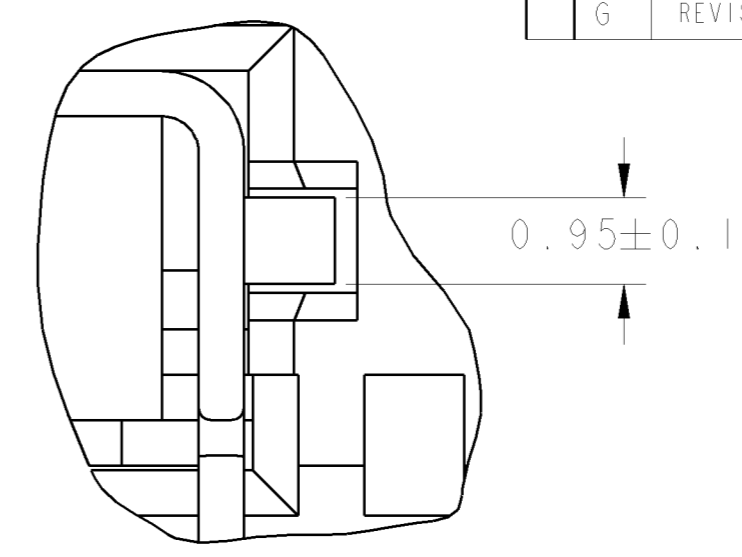
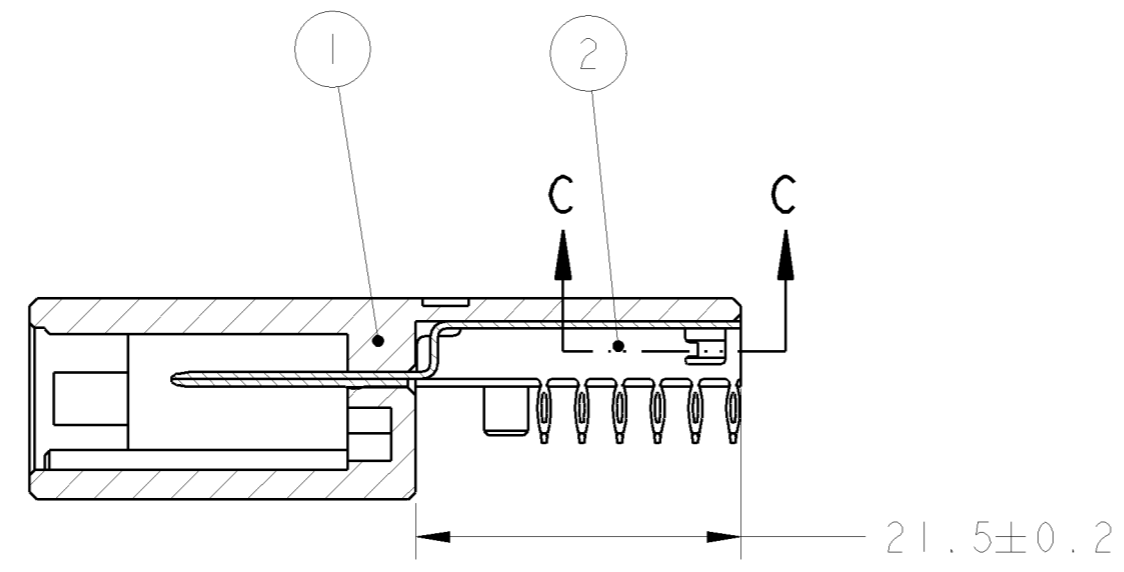
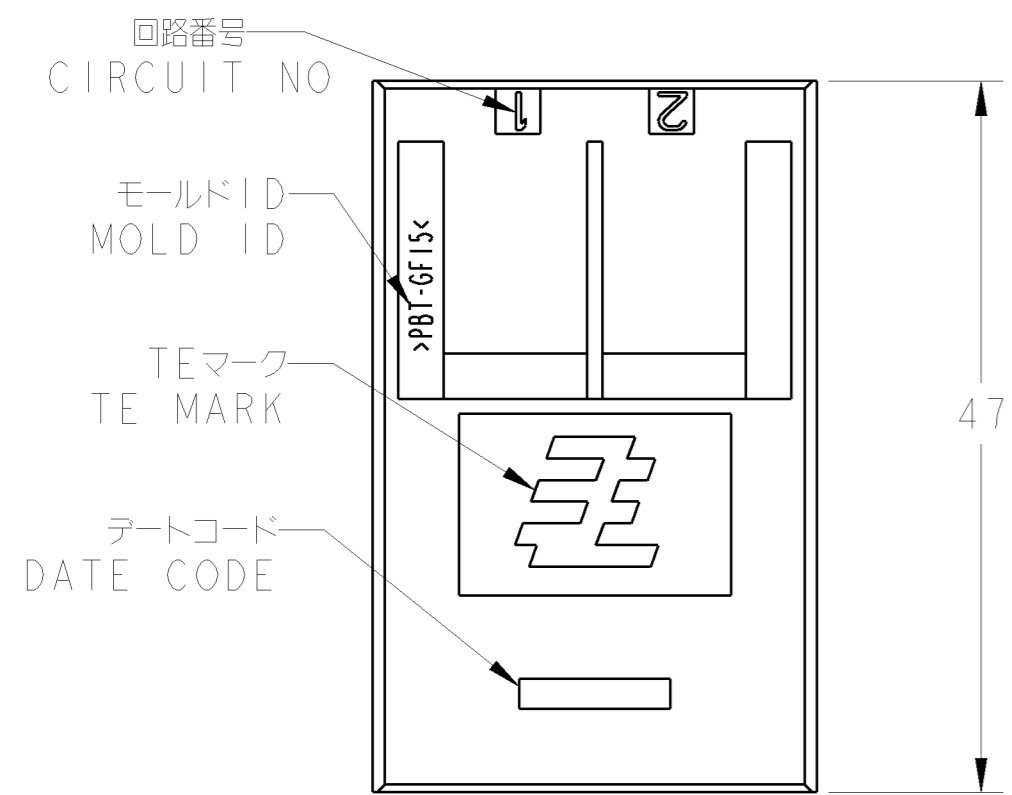


LOC	DIST	REVISIONS					
J	-	P	LTR	DESCRIPTION	DATE	DWN	APVD
		D		REVISED	06JAN2009	T.N	E.T
		E		REVISED	09FEB2009	T.N	E.T
		F		REVISED	26FEB2009	T.N	E.T
		G		REVISED	26MAR2009	T.N	E.T



- ① DRILL HOLE DIA: 0.9±0.05mm
 COPPER PLATING: 0.025~0.050mm COPPER PLATING
 FINISHED HOLE DIA. AFTER PLATING: 0.825±0.05mm
 COPPER FOIL THICKNESS: 0.070mm MIN
- 2. THIS DRAWING IS DESCRIBED 2069161-1
- ③ BOTH SIDE AREA IS ADOPTED WHEN CONNECTOR IS NOT SEATED.
- ④ SPACE BETWEEN BOARD AND CONNECTOR AT MOUNT ARE 0.4MAX.

- ① 下穴径: 0.9±0.05mm
 銅スルーホールメッキ: 0.025~0.050mm
 仕上がり径: 0.825±0.05mm
 パターン銅箔厚: 0.070mm MIN
- 2. 本図は2069161-1を示す。
- ③ 両サイドの領域は両サイドにコネクタが実装されていないときに適用
- ④ 実装後のコネクタと基板との浮き: 0.4MAX

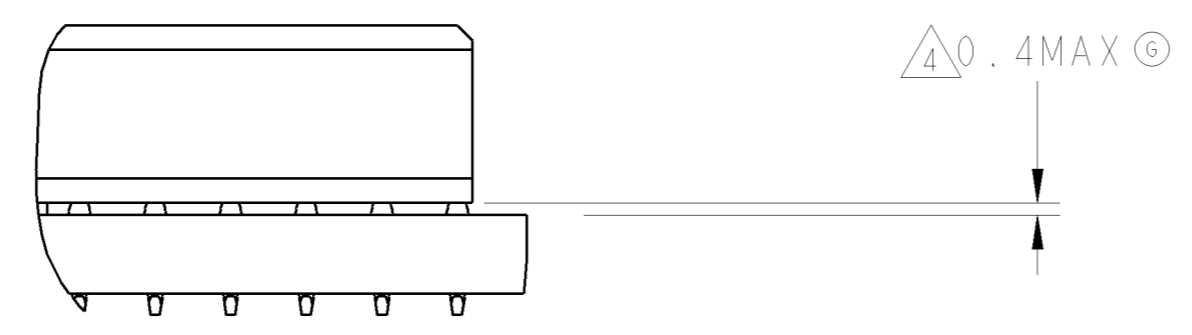


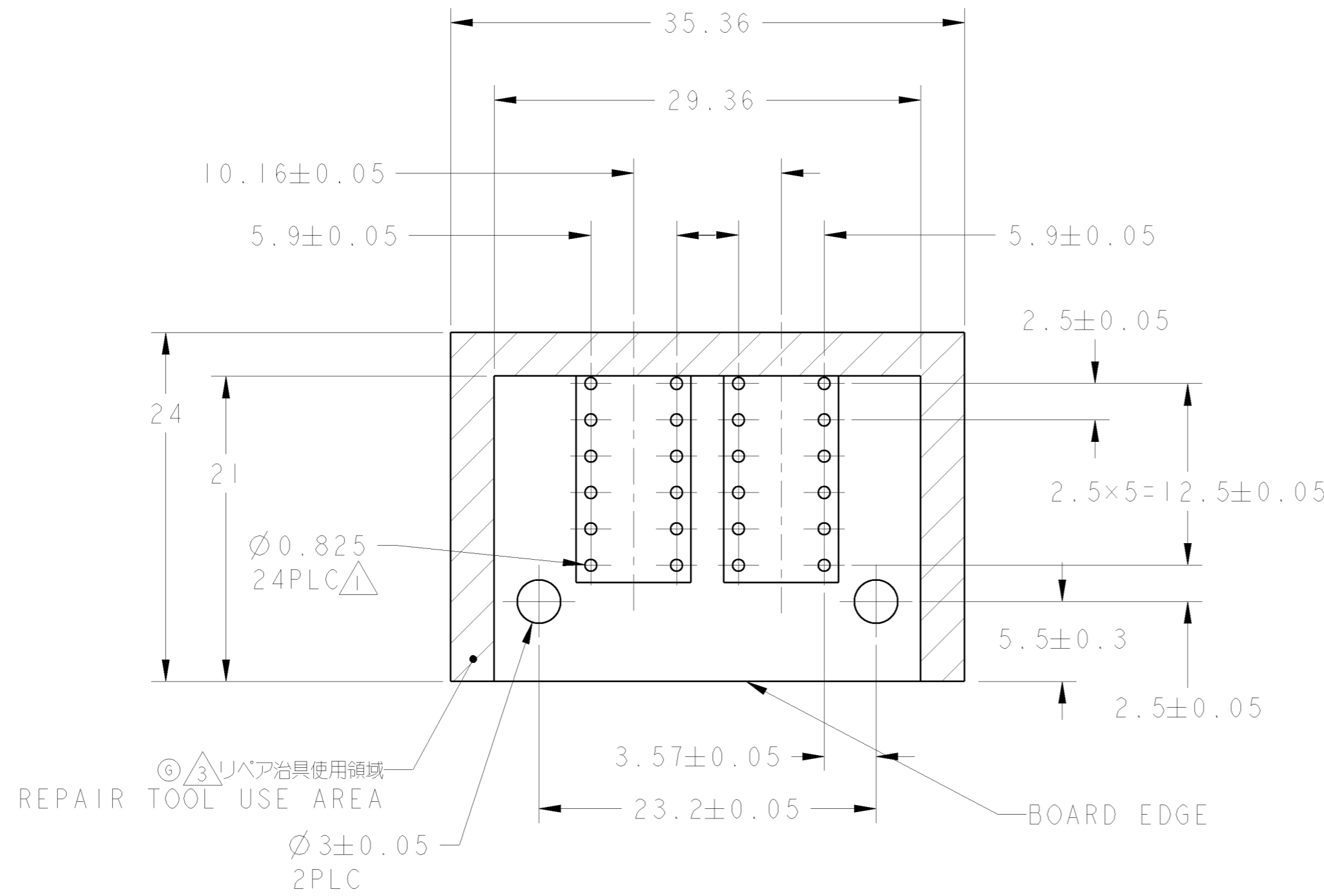
TABLE 1

COPPER ALLOY CONTACT AREA : 0.38μmMIN GOLD ALL OVER UNDER NICKEL PLATING 1.27μmMIN 銅合金 嵌合接触部: 0.38μmMIN 金メッキ 1.27μmMIN Ni下地メッキ	HDR CONTACT ヘッダー コンタクト	②
GLASS FILLED PBT ガラス入りPBT	HDR HOUSING ヘッダー ハウジング	①
MATERIAL&FINISH		NAME
		ITEM

THIS DRAWING IS A CONTROLLED DOCUMENT FOR TYCO ELECTRONICS CORPORATION IT IS SUBJECT TO CHANGE AND THE CONTROLLING ENGINEERING ORGANIZATION SHOULD BE CONTACTED FOR THE LATEST REVISION		DWN T. NAGASAKI 10 JUN 2008	Tyco Electronics Corporation Kawasaki, Japan	
DIMENSIONS: mm		CHK E. TAKEMASA 10 JUN 2008	NAME RIGHT ANGLE HDR ASSEMBLY PF30 PRESS FIT	
TOLERANCES UNLESS OTHERWISE SPECIFIED: 0 PLC ±0.5 1 PLC ±0.5 2 PLC ±0.3 3 PLC ±0.3 4 PLC ± ANGLES ±		APVD F. TAKEMASA 10 JUN 2008	RESTRICTED TO	
MATERIAL TABLE 1 -		PRODUCT SPEC ⑥ 108-78597	SIZE A200779	DRAWING NO C=2069161
		APPLICATION SPEC	SCALE 2:1	SHEET 1 OF 2
		WEIGHT ⑥ 14.3g	CUSTOMER DRAWING	REV G

THIS DRAWING IS UNPUBLISHED. RELEASED FOR PUBLICATION 20
 © COPYRIGHT 20 BY TYCO ELECTRONICS CORPORATION. ALL RIGHTS RESERVED.

LOC	DIST	REVISIONS					
		P	LTR	DESCRIPTION	DATE	DWN	APVD
J	-	-	-	SEE SHEET 1	-	-	-



REPAIR TOOL USE AREA
 ③ リペア治具使用領域
 ③ 3mm
 Ø 0.825
 24PLC
 Ø 3±0.05
 2PLC

SCALE 3:1
 RECOMMENDED PC BOARD LAYOUT ±=2.1~4.2mm

<small>THIS DRAWING IS A CONTROLLED DOCUMENT FOR TYCO ELECTRONICS CORPORATION IT IS SUBJECT TO CHANGE AND THE CONTROLLING ENGINEERING ORGANIZATION SHOULD BE CONTACTED FOR THE LATEST REVISION</small>		DWN T. NAGASAKI 10 JUN 2008 CHK E. TAKEMASA 10 JUN 2008 APVD F. TAKEMASA 10 JUN 2008	Tyco Electronics Corporation Kawasaki, Japan		
DIMENSIONS: mm	TOLERANCES UNLESS OTHERWISE SPECIFIED: 0 PLC ±- 1 PLC ±0.5 2 PLC ±0.13 3 PLC ±0.013 4 PLC ±0.0001 ANGLES ±- FINISH	PRODUCT SPEC APPLICATION SPEC WEIGHT	NAME RIGHT ANGLE HDR ASSEMBLY PF30 PRESS FIT		
MATERIAL		CUSTOMER DRAWING	SIZE A200779 CAGE CODE C=2069161	DRAWING NO SCALE 2:1	RESTRICTED TO SHEET 2 OF 2 REV G

Mouser Electronics

Authorized Distributor

Click to View Pricing, Inventory, Delivery & Lifecycle Information:

[TE Connectivity:](#)

[2069161-1](#)