

5-1747072-2 ✓ ACTIVE

Grace Inertia | GRACE INERTIA 2.5

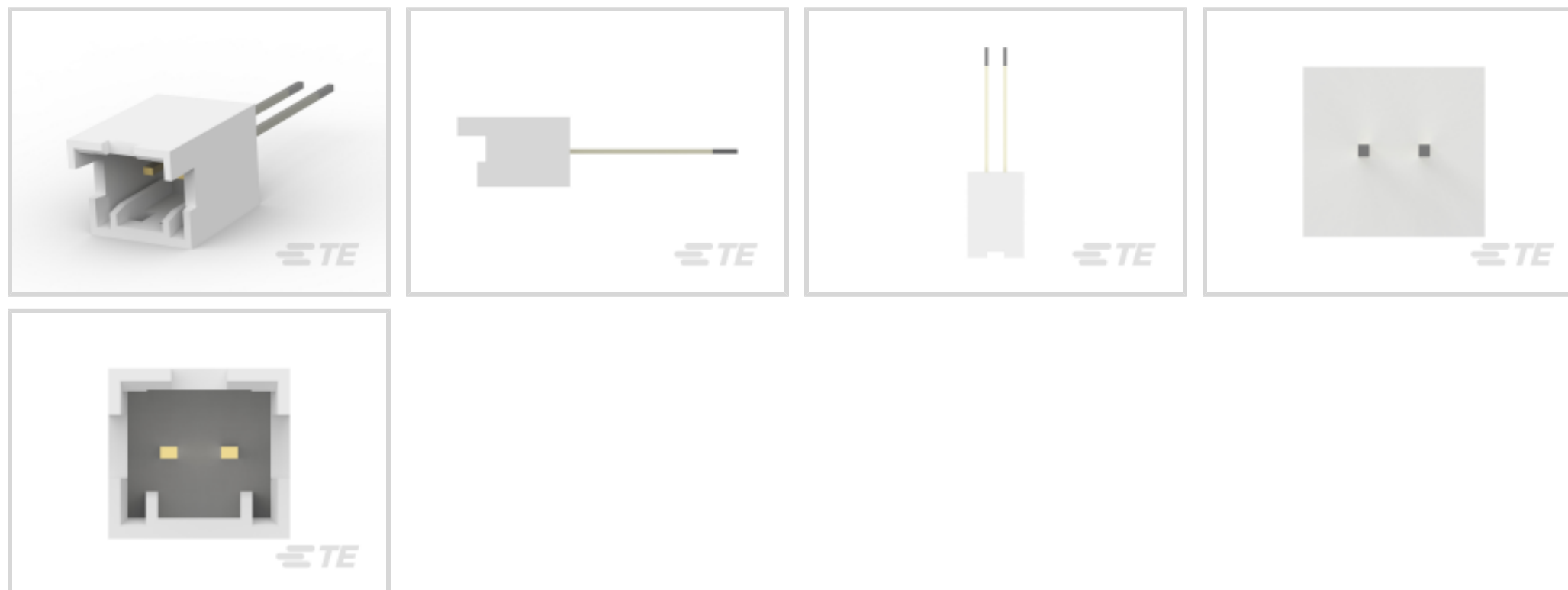
TE Internal #: 5-1747072-2

GRACE INERTIA 2.5, PCB Mount Header, Vertical, Wire-to-Board, 2 Position, 2.5mm [.098in] Centerline, 1 Row, Gold, Natural Housing Color

[View on TE.com >](#)



Connectors > PCB Connectors > Wire-to-Board Connectors > Wire-to-Board Headers & Receptacles



PCB Connector Assembly Type: **PCB Mount Header**

PCB Mount Orientation: **Vertical**

Connector System: **Wire-to-Board**

Number of Positions: **2**

Centerline (Pitch): **2.5 mm [.098 in]**

Features

Product Type Features

PCB Connector Assembly Type	PCB Mount Header
Connector System	Wire-to-Board
Header Type	Fully Shrouded
Sealable	No
Connector & Contact Terminates To	Printed Circuit Board

Configuration Features

PCB Mount Orientation	Vertical
Number of Positions	2
Number of Rows	1

Electrical Characteristics

Operating Voltage	50 VAC
-------------------	--------

Contact Features

Contact Layout	Inline
Contact Retention Within Housing	Without



PCB Contact Termination Area Plating Material Thickness	2 µm[78.74 µin]
Mating Tab Width	.7 mm[.028 in]
Mating Tab Thickness	.5 mm[.02 in]
Contact Underplating Material Thickness	1.27 µm[50 µin]
PCB Contact Termination Area Plating Material Finish	Matte
Contact Underplating Material	Nickel
PCB Contact Termination Area Plating Material	Tin
Contact Base Material	Brass
Contact Mating Area Plating Material	Gold
Contact Mating Area Plating Material Thickness	.3 µm[11.81 µin]
Contact Type	Tab
Contact Current Rating (Max)	3 A

Termination Features

Square Termination Post & Tail Dimension	.5 mm[.02 in]
Termination Post & Tail Length	2.8 mm, 16.8 mm[.11 in][.661 in]
Termination Method to Printed Circuit Board	Through Hole - Solder

Mechanical Attachment

Strain Relief	Without
Mating Alignment Type	Polarization
Mating Alignment	With
Panel Mount Feature	Without
Mating Retention Type	Latch
PCB Mount Alignment	Without
Mating Retention	With
PCB Mount Retention	Without
Connector Mounting Type	Board Mount

Housing Features

Centerline (Pitch)	2.5 mm[.098 in]
Housing Color	Natural
Housing Material	Nylon

Dimensions

Connector Length	7.5 mm[.295 in]
------------------	-----------------



Connector Height	11.3 mm[.444 in]
------------------	------------------

Connector Width	7 mm[.27 in]
-----------------	--------------

PCB Thickness (Recommended)	1.6 mm[.063 in]
-----------------------------	-----------------

Usage Conditions

Operating Temperature Range	-30 – 105 °C[-22 – 221 °F]
-----------------------------	----------------------------

Operation/Application

Circuit Application	Signal
---------------------	--------

Industry Standards

Glow Wire Rating	Standard Part - Not Glow Wire
------------------	-------------------------------

UL Flammability Rating	UL 94V-0
------------------------	----------

Agency/Standard	UL
-----------------	----

Packaging Features

Packaging Quantity	900
--------------------	-----

Packaging Method	Tape
------------------	------

Other

Comment	Mating with X-1747066-2
---------	-------------------------

Product Compliance

[For compliance documentation, visit the product page on TE.com>](#)

EU RoHS Directive 2011/65/EU	Compliant
------------------------------	-----------

EU ELV Directive 2000/53/EC	Compliant
-----------------------------	-----------

China RoHS 2 Directive MIIT Order No 32, 2016	No Restricted Materials Above Threshold
---	---

EU REACH Regulation (EC) No. 1907/2006	Current ECHA Candidate List: JAN 2021 (211) Candidate List Declared Against: JAN 2021 (211) Does not contain REACH SVHC
--	---

Halogen Content	Not Low Halogen - contains Br or Cl > 900 ppm.
-----------------	--

Solder Process Capability	Wave solder capable to 240°C
---------------------------	------------------------------

Product Compliance Disclaimer

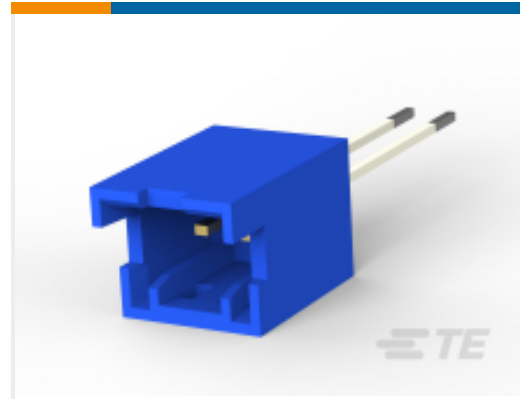
This information is provided based on reasonable inquiry of our suppliers and represents our current actual knowledge based on the information they provided. This information is subject to change. The part numbers that TE has identified as EU RoHS compliant have a maximum concentration of 0.1% by weight in homogenous materials for lead, hexavalent chromium, mercury, PBB, PBDE, DBP, BBP, DEHP, DIBP, and 0.01% for cadmium, or qualify for an exemption to these limits as defined in the Annexes of Directive 2011/65/EU (RoHS2). Finished electrical and electronic equipment products

will be CE marked as required by Directive 2011/65/EU. Components may not be CE marked. Additionally, the part numbers that TE has identified as EU ELV compliant have a maximum concentration of 0.1% by weight in homogenous materials for lead, hexavalent chromium, and mercury, and 0.01% for cadmium, or qualify for an exemption to these limits as defined in the Annexes of Directive 2000/53/EC (ELV). Regarding the REACH Regulation, the information TE provides on SVHC in articles for this part number is based on the latest European Chemicals Agency (ECHA) 'Guidance on requirements for substances in articles' posted at this URL: <https://echa.europa.eu/guidance-documents/guidance-on-reach>

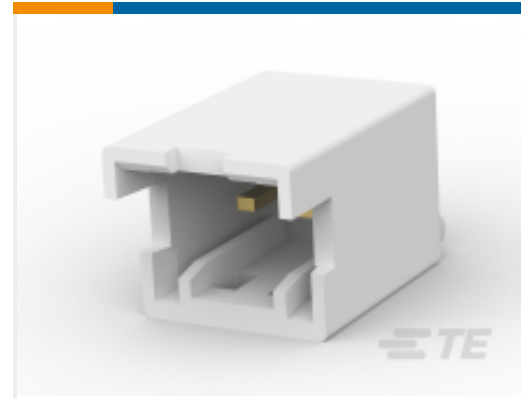
Compatible Parts



TE Part # 5-1747072-3
GRACE INERTIA CONN 2.5 ON TAPE HDR 3P NA



TE Part # 7-1747072-2
GRACE INERTIA CONN 2.5 ON TAPE HDR 2P BL



TE Part # 1747067-2
GRACE INERTIA CONN 2.5 HDR ASSY 2P NATUR



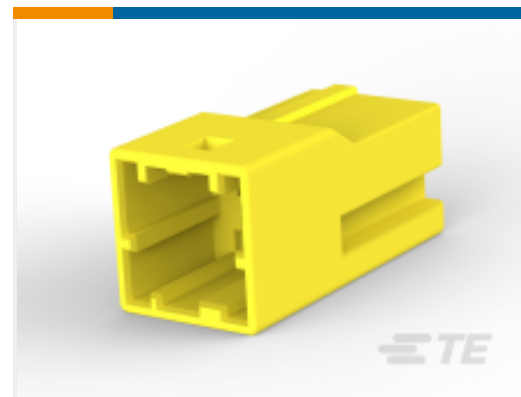
TE Part # 6-1747072-4
GRACE INERTIA CONN 2.5 ON TAPE HDR 4P RE



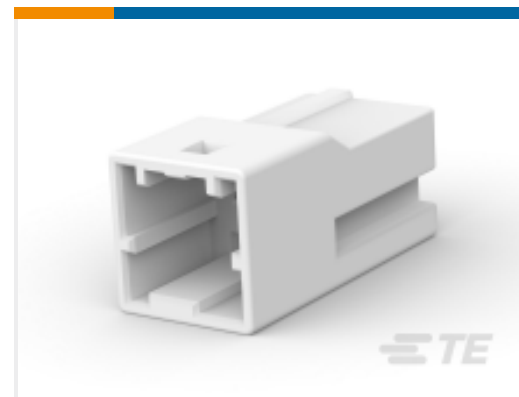
TE Part # 1747066-2
GRACE INERTIA CONN 2.5 PLUG HSG 2P NATUR



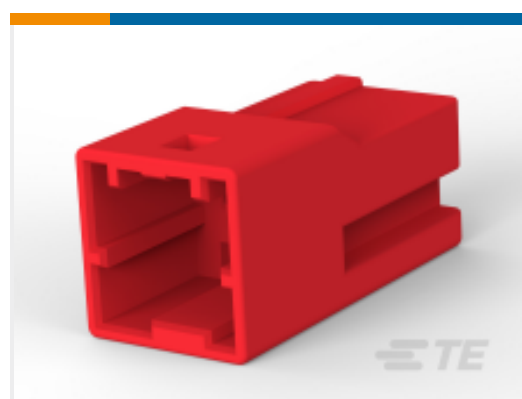
TE Part # 1-1747066-2
GRACE INERTIA CONN 2.5 PLUG HSG 2P RED



TE Part # CAT-G7534A-C1701
STD Temp Sig GRACE INERTIA Cap



TE Part # 1903391-1
GIC 2.5 W CAP HSG 2P NATURAL



TE Part # 1-1903391-2
GIC 2.5 W CAP HSG 2P RED

Also in the Series | GRACE INERTIA 2.5



Connector Contacts(2)



PCB Latches, Locks & Retainers(5)



Rectangular Connector Housings(49)



Rectangular Connector Locking(2)



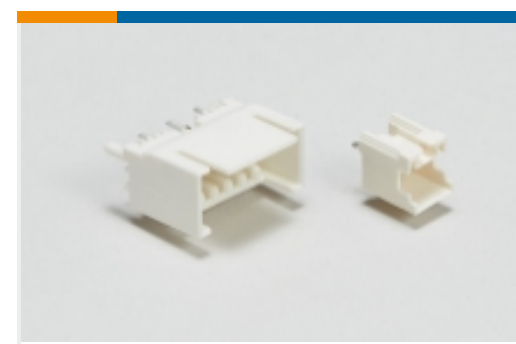
Rectangular Power Connectors(36)



Wire-to-Board Connector Assemblies & Housings(69)

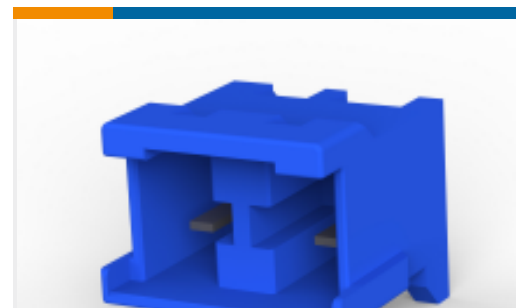
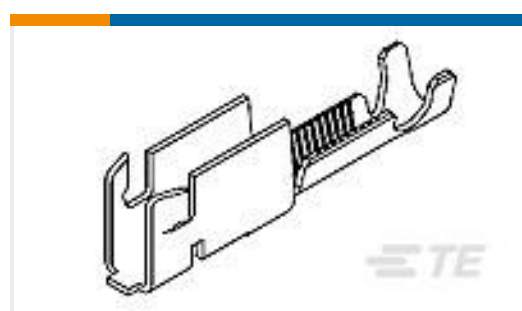


Wire-to-Board Connector Contacts(4)



Wire-to-Board Headers & Receptacles (138)

Customers Also Bought

TE Part #1-292207-0
MINI CT SGL DIP V 10P NATTE Part #1376478-2
2.5 SMC HDR 2POS WHITE (LP)TE Part #1747052-3
GIC7.92 2POS_HEADER ASSY BLUETE Part #1-1971030-8
8POS Plug Housing for GIC 2.0 EV SeriesTE Part #1217671-1
CLSTR BLK RCPT AMVAR 1500-4200TE Part #1601056-1
131-119-000=WIRE2WIRE,STD,SMZTE Part #7-1747511-1
GIC 2.5 ON TAPE HDR 3/5P BLUE

Documents

Product Drawings

[GRACE INERTIA CONN 2.5 ON TAPE HDR 2P NA](#)

Japanese

CAD Files

Customer View Model

[ENG_CVM_CVM_5-1747072-2_G.2d_dxf.zip](#)

English

[3D PDF](#)

3D

Customer View Model

[ENG_CVM_CVM_5-1747072-2_G.3d_igs.zip](#)

English

Customer View Model

[ENG_CVM_CVM_5-1747072-2_G.3d_stp.zip](#)

English

By downloading the CAD file I accept and agree to the [Terms and Conditions](#) of use.



[Product Specifications](#)

[Application Specification](#)

Japanese

Mouser Electronics

Authorized Distributor

Click to View Pricing, Inventory, Delivery & Lifecycle Information:

[TE Connectivity:](#)

[5-1747072-2](#)