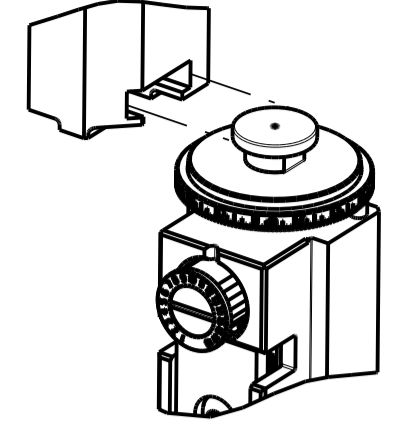


THIS DRAWING IS UNPUBLISHED. RELEASED FOR PUBLICATION 20  
 © COPYRIGHT 20 BY TYCO ELECTRONICS CORPORATION. ALL RIGHTS RESERVED.

ATLANTIC VERSION TERMINATOR  
 INTERFACE ADAPTER



PART NUMBER	REVISION	DESCRIPTION	FEED TYPE
2836152-2	D	FINE CRIMP HEIGHT ADJUST	PNEUMATIC
7-2836152-2	D	PNEUMATIC AND CRIMP TOOLING KIT	PNEUMATIC
7-2836152-7	A	CRIMP TOOLING KIT	-

CRIMP	SIZE	TYPE
WIRE	0.58 mm [.023]	F
INSUL	0.76 mm [.030]	F

APPLICATOR INSTRUCTIONS  
 408-35042

TERMINAL DATA: HIROSE TERMINAL HIROSE CRIMP SPECIFICATION	
TERMINAL NAME: TERMINAL	
WIRE STRIP LENGTH 1.00-1.40 mm [.039-.055 IN]	INSULATION DIAMETER RANGE ∅0.56-0.58 mm [.022-.023 IN]
TERMINAL APPLICATION SPECIFICATION (A)TAD-P-0506 Rev 1	
TERMINALS APPLIED	
TE TERMINAL	HIROSE TERMINAL
2113112-1	DF57-2830SCF

WIRE SIZE	CRIMP HEIGHT mm [INCH]	CRIMP HEIGHT REFERENCE SETTING
28 AWG OR 0.08mm2	0.46 +/- 0.02 [.018 +/- .001]	8.0
30 AWG OR 0.05mm2	0.42 +/- 0.02 [.017 +/- .001]	8.4

- RECOMMENDED SPARE PARTS
- REFER TO SUPPLIED INSTRUCTION SHEET FOR CLEANING, LUBRICATION AND STORAGE OF APPLICATOR.
- APPLY PART NUMBER 1-23419-5 LOCTITE TO THREADS OF ITEM 180. APPLY PART NUMBER 2-23419-6 LOCTITE TO THREADS OF ITEM 242.
- CRIMP HEIGHT REFERENCE SETTING WAS THE SETTING USED WHEN THE APPLICATOR WAS QUALIFIED AT THE FACTORY. ADJUSTMENT MAY BE NECESSARY WHEN RUNNING APPLICATOR IN THE FIELD.
5. UNLESS SPECIFIED OTHERWISE TORQUE VALUES SHALL BE USED PER DOCUMENT, 101-35000.
- TERMINAL PITCH NOT COMPATIBLE WITH MECHANICAL FEED.
- TERMINAL LUBRICANT IS RECOMMENDED.

\*WARNING  
 ON INSTALLATION, SET WIRE DISC TO CRIMP HEIGHT REFERENCE SETTING FOR LARGEST WIRE SIZE. CRIMP HEIGHT REFERENCE SETTINGS GREATER THAN THE VALUE SHOWN MAY CAUSE DAMAGE TO THE CRIMP TOOLING, REFER TO THE INSTRUCTION SHEET FOR PROPER SETUP AND ADJUSTMENTS.

LOC	DIST	REVISIONS			
A	66	REV	DATE	BY	CHK
		A	RELEASE	17FEB2016	XZ UG
		B	ECR-17-005126	07APR2017	TB GB
		C	ECR-19-001455	29JAN2019	FL CT
		D	ECR-21-004245	12APR2021	FJ TE

-	1	1	2119641-1	FEED CAM, AIR FEED	248	
-	1	1	2119082-1	CAM, SNAIL, INSULATION ADJUSTMENT	244	
-	1	1	2079764-1	WASHER, WAVE SPRING, CREST-TO-CREST	243	
	-	1	2119083-1	RETAINER, INSULATION DIAL	242	
-	1	1	7-18023-7	SCR, SKT HD CAP M3 X 4.0	241	
-	1	1	2844940-1	AIR FEED MODULE	238	
-	2	2	1-2079383-0	SCR, BHSC, RoHS (M3 X 6)	230	
	-	1	1-1752354-2	STANDOFF, HOLD-DOWN	180	
-	1	1	1-1633764-2	HOLD DOWN, TERMINAL	179	
-	1	1	9931111-1	PIN, SLOTTED SPRING 3.0 X 20.0	177	
-	1	1	8-22280-7	SPRING, COMPRESSION	176	
-	1	1	1752353-2	GUIDE PIN, HOLDDOWN	175	
-	1	1	1901680-2	GUIDE PIN, HOLDDOWN	174	
-	REF	REF	994970-2	COUNTER, MAGNETIC	164	
	-	1	2119955-1	ASSY, LUBRICATOR, SIDE FEED	113	
-	1	1	2844908-1	SCREW, LOCKING	99	
-	1	1	2844907-1	POST, LOCKING	98	
-	1	1	2-455888-2	SPACER, CRIMPER	82	
-	1	1	5-547505-2	SPRING, COMPRESSION	77	
-	1	1	854769-4	HOLDER, INS	74	
-	1	1	1803607-3	DOCUMENTATION PACKAGE	71	
-	1	1	2119740-1	TAG, IDENTIFICATION	67	
-	2	2	2168078-1	SCREW, DRIVE, RH, RoHS, 2 x .188	66	
-	1	1	2168083-2	SCR, SKT HD CAP, RoHS, M4 X 8.0	60	
-	1	1	5-18022-5	SCR, HEX HD CAP, M4 X 6.0	59	
-	1	1	21028-2	PIN, SLOTTED SPRING .062 X .250	58	
-	1	1	1338685-1	PAWL, FEED	56	
-	4	4	2168083-3	SCR, SKT HD CAP, RoHS, M4 X 12.0	54	
-	1	1	1-5018030-0	NUT, HEX, REG, RoHS, M3.5	52	
-	1	1	1901681-8	HOLDDOWN, TERMINAL	51	
-	1	1	18023-9	SCR, SKT HD CAP M4 X 6.0	49	
-	1	1	1803583-9	APPLICATOR BASIC ASSEMBLY, SF	46	
-	1	1	1803515-3	RAM ASSEMBLY, SF ATLANTIC	44	
-	1	1	1803602-1	SCR, BHSC, RoHS (M8 X 25)	41	
-	1	1	2-1752356-6	SUPPORT, TERMINAL	34	
-	2	2	2079383-5	SCR, BHSC, RoHS (M4 X 20)	33	
-	2	2	1-2844962-4	SPACER, CYLINDRICAL, STRIP GUIDE	30	
-	1	1	2844992-1	ASSEMBLY, STRIP GUIDE	29	
-	1	1	455888-3	SPACER, CRIMPER	28	
-	1	1	1-1320928-9	STRIP GUIDE	24	
-	1	1	2168083-2	SCR, SKT HD CAP, RoHS, M4 X 8.0	21	
-	2	2	1-18028-2	WASHER, FLAT, REG M4	20	
-	1	1	2119533-4	STRIPPER, SIDE FEED	19	
	-	1	1	2119806-1	INSERT, SHEAR	13
-	1	1	3-22280-3	SPRING, COMPRESSION	12	
-	1	1	1-356885-4	STOP, SHEAR	11	
	-	1	1	2119805-1	SHEAR HOLDER, FRONT	10
	-	1	1	1633861-1	SHEAR, FLOATING	9
	1	2	1	1803337-2	ANVIL, COMBINATION	8
-	-	-	-	-	7	
-	-	-	-	-	6	
-	1	1	2119780-1	DEPRESSOR, SHEAR	5	
-	1	1	238011-7	BLOCK, CRIMPER SPACER	4	
	1	2	1	1803223-8	CRIMPER, INSULATION F PREMIUM	3
-	-	-	-	-	2	
	1	2	1	1803323-9	CRIMPER, WIRE PREMIUM	1
-	-	-	-	-	0	
-	77	72	-2	PART NO	ITEM NO	

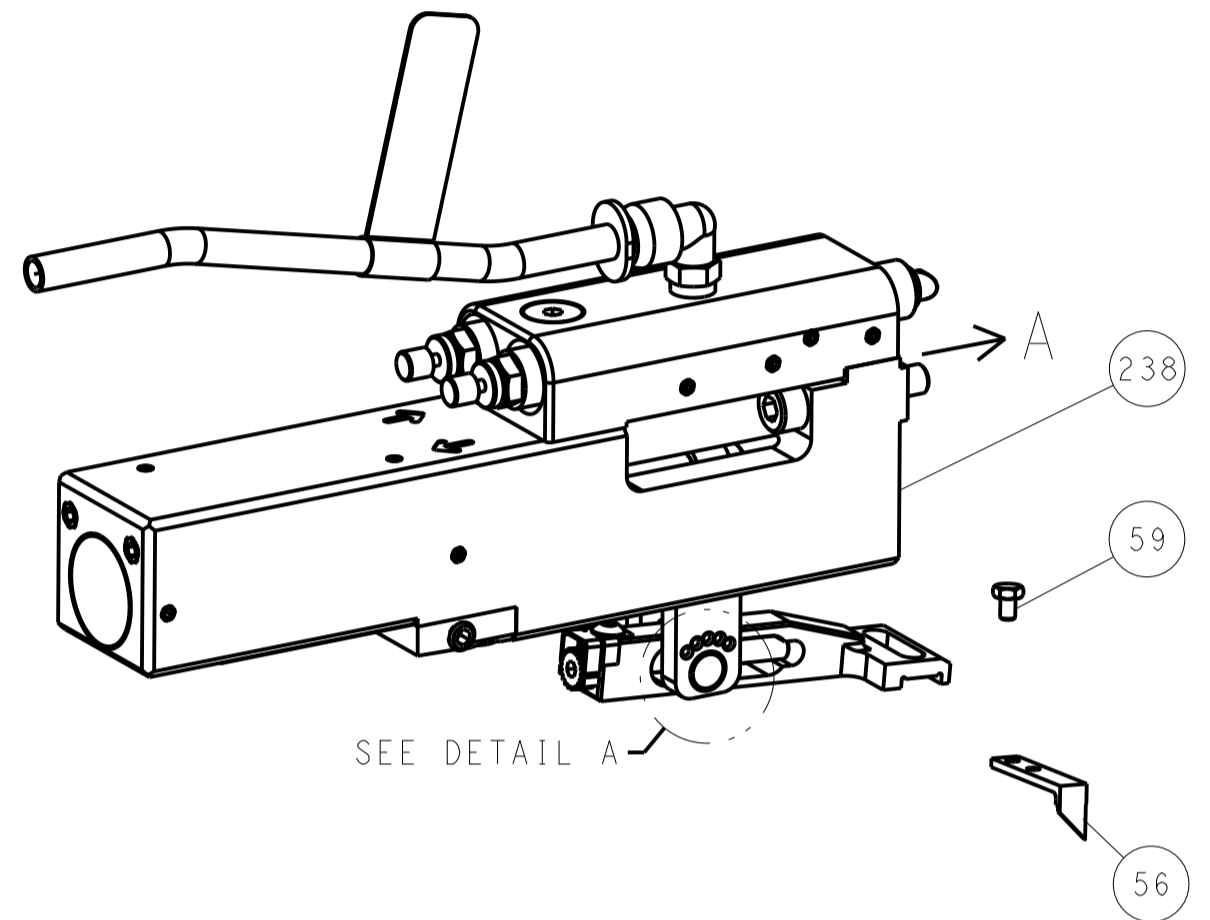
ATLANTIC VERSION  
 Shown on sheets 1 of 4 & 2 of 4  
 (Pacific version shown on sheets 3 of 4 & 4 of 4)

<small>THE INFORMATION CONTAINED HEREIN IS UNCLASSIFIED EXCEPT WHERE SHOWN OTHERWISE. IT IS THE POLICY OF TYCO ELECTRONICS CORPORATION TO RELEASE INFORMATION UNLESS OTHERWISE SPECIFIED.          IF YOU ARE UNABLE TO CONTACT US FOR INFORMATION, CONTACT THE NEAREST TYCO OFFICE.</small>	<small>OWN</small> X. ZHAO 22DEC2015 <small>CHK</small> L. ZHANG 22DEC2015 <small>APVD</small> H. GUO 22DEC2015	STE Connectivity Harrisburg, PA 17105-3608
<small>DIMENSIONS:</small> mm	<small>TOLERANCES UNLESS OTHERWISE SPECIFIED:</small> 0 PLC ±.1 1 PLC ±.1 2 PLC ±.1 3 PLC ±.1 4 PLC ±.1 ANGLES ±.1	<small>NAME</small> Ocean Side Feed Applicator
<small>MATERIAL</small> -	<small>FINISH</small> -	<small>SIZE</small> A1 <small>CAGE CODE</small> 00779 <small>DRAWING NO</small> C=2836152 <small>REstricted TO</small> Customer Accessible Production Drawing <small>SCALE</small> 1:2 <small>SHEET</small> 1 of 4 <small>REV</small> D

LOC	DIST	REV	DATE	BY	APP'D
A	66				

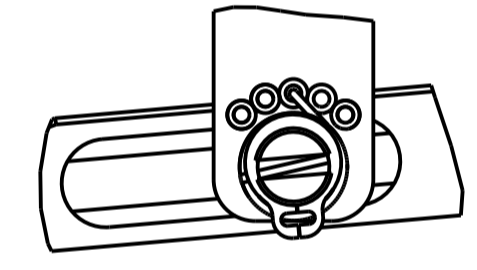
# FEED TYPE

## PNEUMATIC



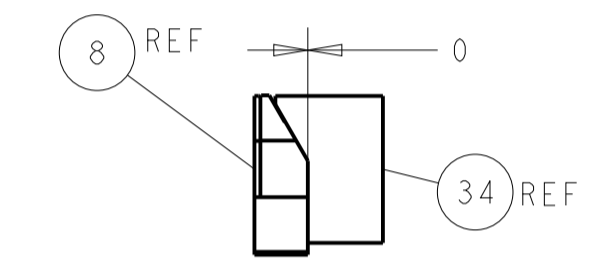
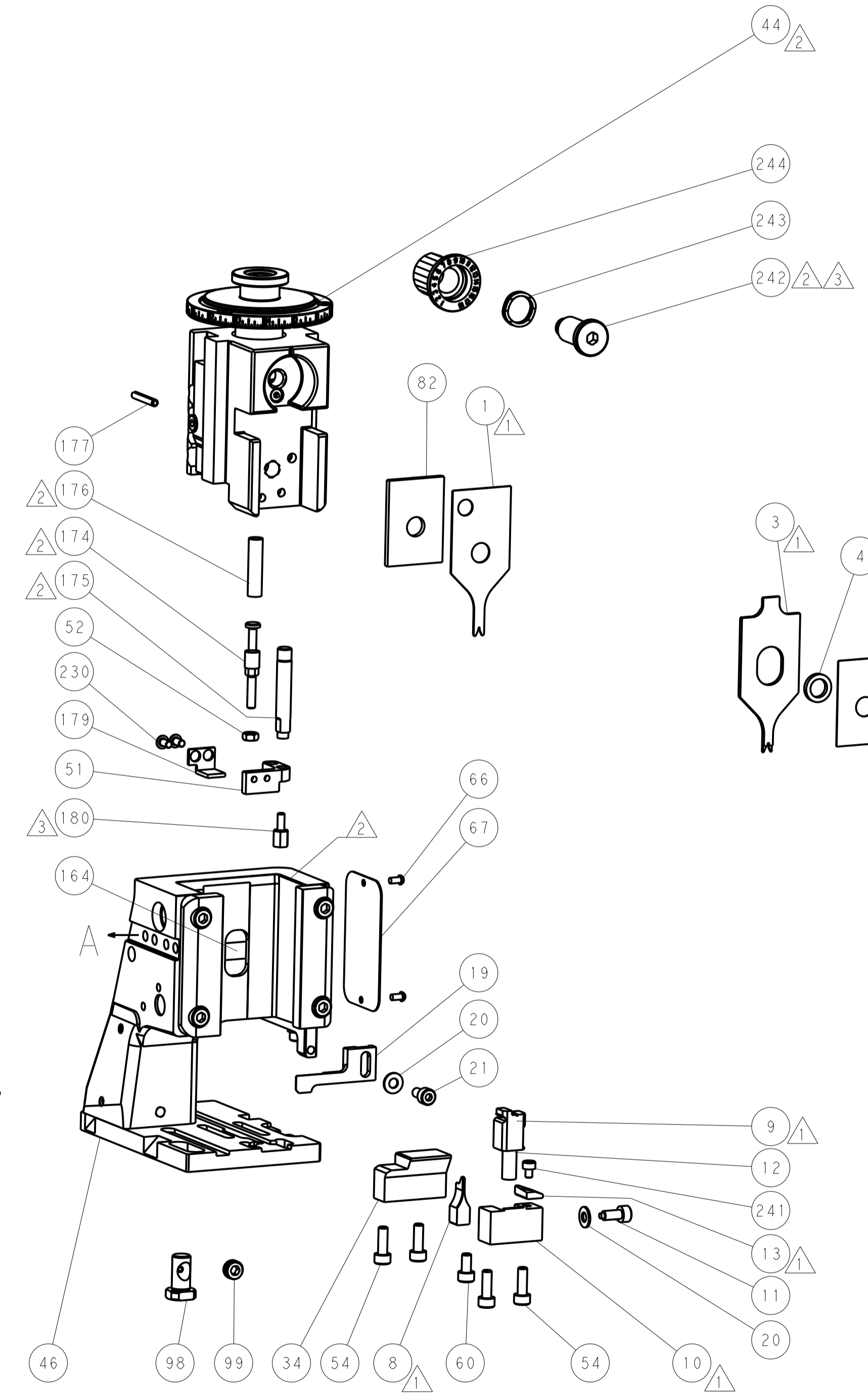
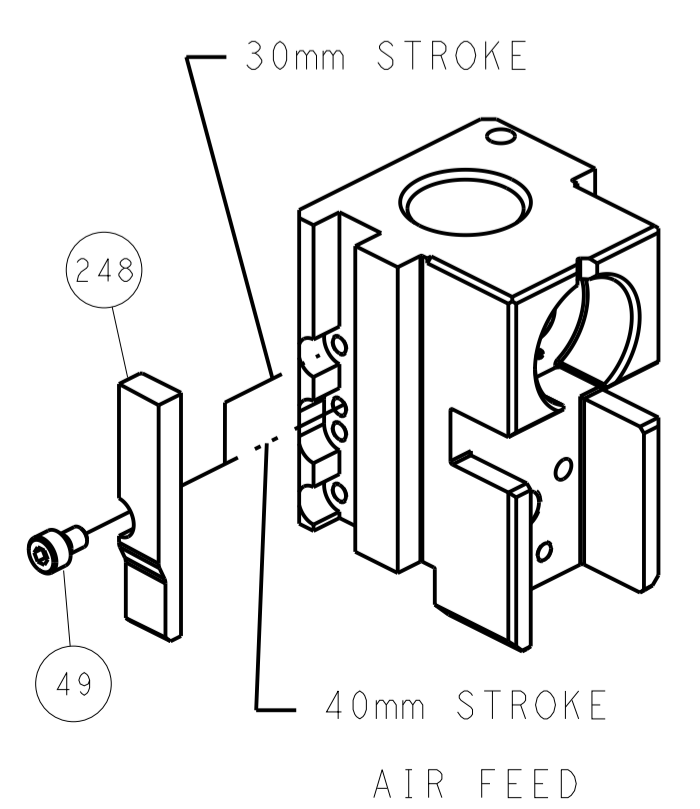
SEE DETAIL A

## FEED SPRING SETTING POSITION (SHOWN FROM REAR SIDE)

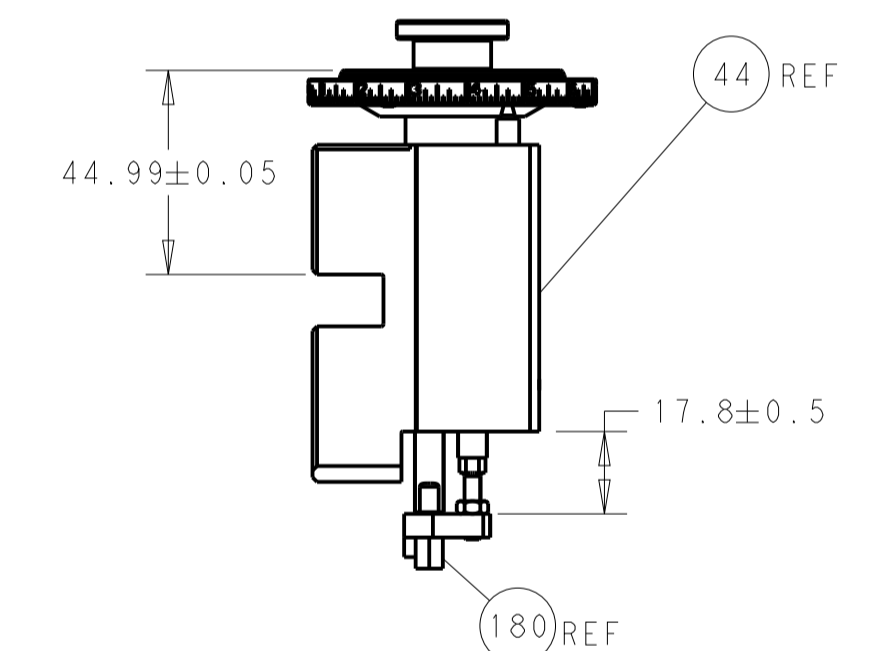


DETAIL A

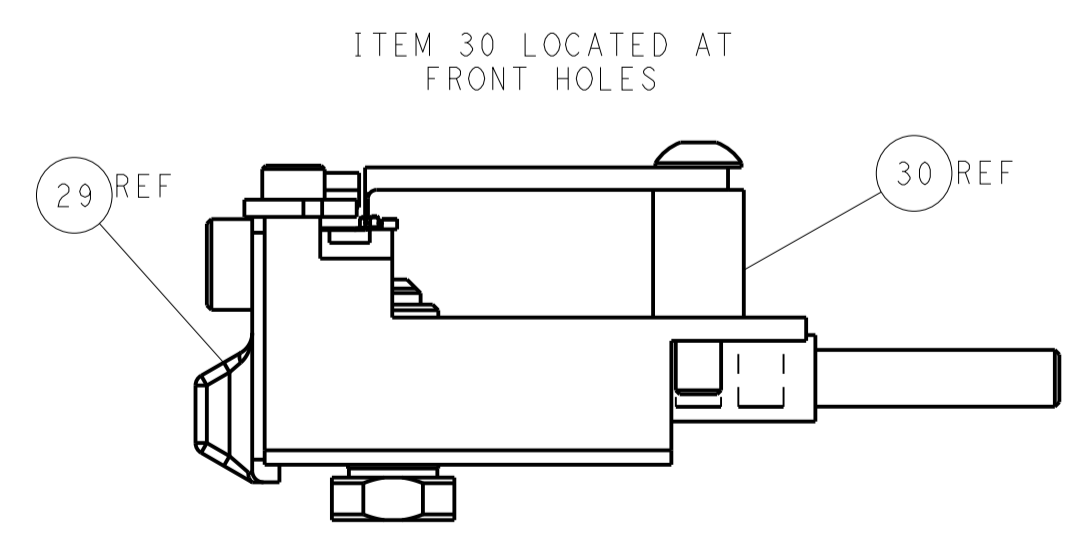
## CAM POSITION



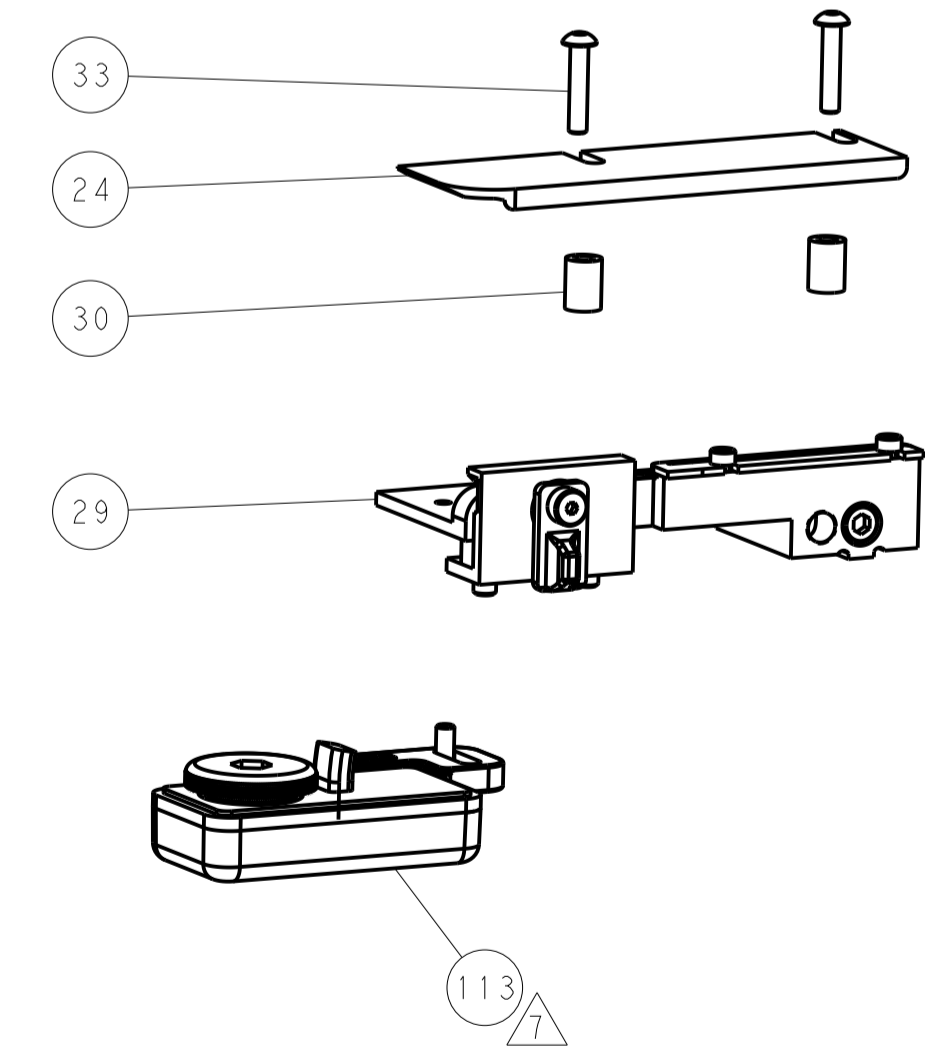
TERMINAL SUPPORT LOCATION



RAM AND HOLDDOWN SET-UP



FEED TRACK POSITION  
GUIDE BY INSULATION BARREL

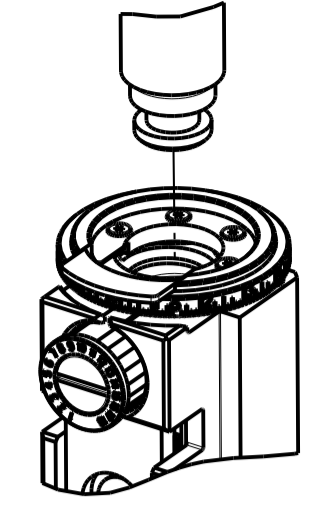


**ATLANTIC VERSION**  
 Shown on sheets 1 of 4 & 2 of 4  
 (Pacific version shown on sheets 3 of 4 & 4 of 4)

<small>THE INFORMATION CONTAINED HEREON IS UNCLASSIFIED EXCEPT WHERE SHOWN OTHERWISE. IT IS SUBJECT TO CHANGE AND WITHOUT WARRANTY OR ENDORSEMENT. SHOULD BE CONTACTED FOR THE LATEST VERSION.</small>		DWN: X.ZHAO 22DEC2015 CHK: L.ZHANG 22DEC2015 APVD: H.GUO 22DEC2015	TE Connectivity Harrisburg, PA 17105-3608
DIMENSIONS: mm TOLERANCES UNLESS OTHERWISE SPECIFIED: 0 PLC ± 1 PLC ± 2 PLC ± 3 PLC ± 4 PLC ± ANGLES ±		NAME: Ocean Side Feed Applicator PRODUCT SPEC: APPLICATION SPEC: SIZE: A1 CAGE CODE: 00779 DRAWING NO: 2836152	RESTRICTED TO:
MATERIAL: FINISH:		WEIGHT: SCALE: 1:2 SHEET: 2 OF 4 REV: D	Customer Accessible Production Drawing

PART NUMBER	REVISION	DESCRIPTION	FEED TYPE
2-2836152-2	D	FINE CRIMP HEIGHT ADJUST	PNEUMATIC
7-2836152-7	A	CRIMP TOOLING KIT	-

PACIFIC VERSION TERMINATOR  
 INTERFACE ADAPTER



APPLICATOR DATA		
CRIMP	SIZE	TYPE
WIRE	0.58 mm [.023]	F
INSUL	0.76 mm [.030]	F

APPLICATOR INSTRUCTIONS  
 408-35042

TERMINAL DATA: HIROSE TERMINAL HIROSE CRIMP SPECIFICATION	
TERMINAL NAME: TERMINAL	
WIRE STRIP LENGTH 1.00-1.40 mm [.039-.055 IN]	INSULATION DIAMETER RANGE Ø0.56-0.58 mm [.022-.023 IN]
TERMINAL APPLICATION SPECIFICATION (A)TAD-P-0506 Rev 1	
TERMINALS APPLIED	
TE TERMINAL 2113112-1	HIROSE TERMINAL DF57-2830SCF

WIRE SIZE	CRIMP HEIGHT mm [INCH]	CRIMP HEIGHT REFERENCE SETTING
28 AWG OR 0.08mm2	0.46 +/- 0.02 [.018 +/- .001]	8.0
30 AWG OR 0.05mm2	0.42 +/- 0.02 [.017 +/- .001]	8.4



- 1. RECOMMENDED SPARE PARTS
- 2. REFER TO SUPPLIED INSTRUCTION SHEET FOR CLEANING, LUBRICATION AND STORAGE OF APPLICATOR.
- 3. APPLY PART NUMBER 1-23419-5 LOCTITE TO THREADS OF ITEM 180. APPLY PART NUMBER 2-23419-6 LOCTITE TO THREADS OF ITEM 242.
- 4. CRIMP HEIGHT REFERENCE SETTING WAS THE SETTING USED WHEN THE APPLICATOR WAS QUALIFIED AT THE FACTORY. ADJUSTMENT MAY BE NECESSARY WHEN RUNNING APPLICATOR IN THE FIELD.
- 5. UNLESS SPECIFIED OTHERWISE TORQUE VALUES SHALL BE USED PER DOCUMENT, 101-35000.
- 6. TERMINAL PITCH NOT COMPATIBLE WITH MECHANICAL FEED.
- 7. TERMINAL LUBRICANT IS RECOMMENDED.

**\*WARNING**  
 ON INSTALLATION, SET WIRE DISC TO CRIMP HEIGHT REFERENCE SETTING FOR LARGEST WIRE SIZE. CRIMP HEIGHT REFERENCE SETTINGS GREATER THAN THE VALUE SHOWN MAY CAUSE DAMAGE TO THE CRIMP TOOLING, REFER TO THE INSTRUCTION SHEET FOR PROPER SETUP AND ADJUSTMENTS.

LOC	DIST	REV	DATE	BY	APPD
A	66				

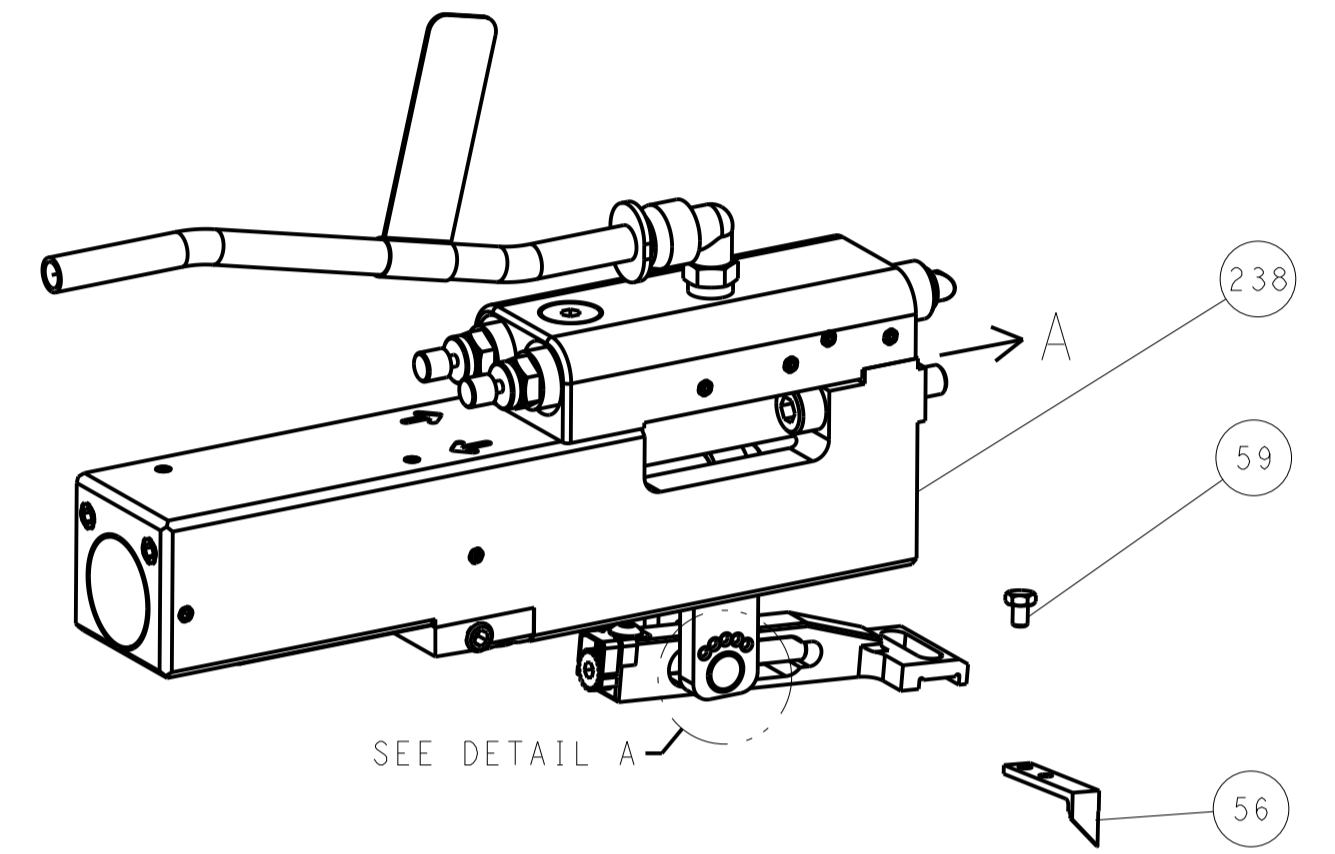
REVISIONS					
REV	DATE	DESCRIPTION	DATE	BY	APPD
-	1	2119082-1			244
-	1	2079764-1			243
3	-	2119083-1			242
-	1	7-18023-7			241
-	1	2844940-1			238
-	2	1-2079383-0			230
3	-	1-1752354-2			180
-	1	1-1633764-2			179
-	1	9931111-1			177
-	1	8-22280-7			176
-	1	1752353-2			175
-	1	1901680-2			174
-	REF	994970-2			164
-	1	2119641-2			151
-	1	2168083-8			144
-	4	2168083-9			143
-	1	1-1803583-0			141
-	1	1803516-1			140
7	-	2119955-1			113
-	1	2844908-1			99
-	1	2844907-1			98
-	1	2-455888-2			82
-	1	5-547505-2			77
-	1	854769-4			74
-	1	1803607-3			71
-	1	2119740-1			67
-	2	2168078-1			66
-	1	5-18022-5			59
-	1	21028-2			58
-	1	1338685-1			56
-	1	1-5018030-0			52
-	1	1901681-8			51
-	1	18023-9			49
-	1	1803602-1			41
-	1	2-1752356-6			34
-	2	2079383-5			33
-	2	1-2844962-4			30
-	1	2844992-1			29
-	1	455888-3			28
-	1	1-1320928-9			24
-	1	2168083-2			21
-	2	1-18028-2			20
-	1	2119533-4			19
1	-	2119806-1			13
-	1	3-22280-3			12
-	1	1-356885-4			11
1	-	2119805-1			10
1	-	1633861-1			9
1	1	1803337-2			8
-	-	-			7
-	-	-			6
-	1	2119780-1			5
-	1	238011-7			4
1	1	1803223-8			3
-	-	-			2
1	1	1803323-9			1

PACIFIC VERSION  
 Shown on sheets 3 of 4 & 4 of 4  
 (Atlantic version shown on sheets 1 of 4 & 2 of 4)

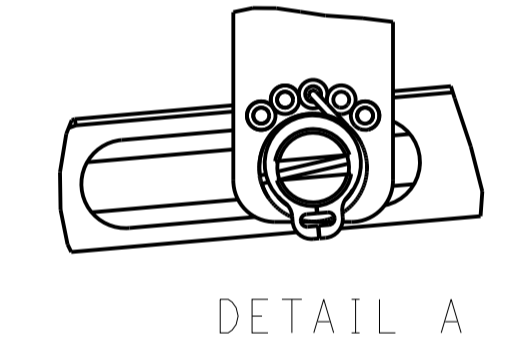
DIMENSIONS: mm		TOLERANCES UNLESS OTHERWISE SPECIFIED: 0 PLC ± 1 PLC ± 2 PLC ± 3 PLC ± 4 PLC ± ANGLES ±		DRAWN X. ZHAO 22DEC2015		CHK L. ZHANG 22DEC2015		APVD H. GUO 22DEC2015		NAME Ocean Side Feed Applicator	
MATERIAL		FINISH		WEIGHT		SIZE A1		CAGE CODE 00779		DRAWING NO 2836152	
Customer Accessible Production Drawing				SCALE 1:2		SHEET 3		OF 4		REV D	

LOC		REVISONS	
A	66	DESCRIPTION	DATE
		SEE SHEET 1	

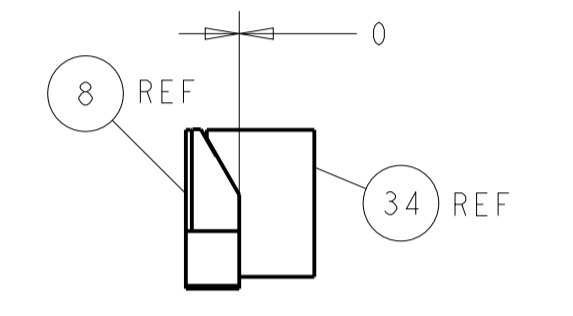
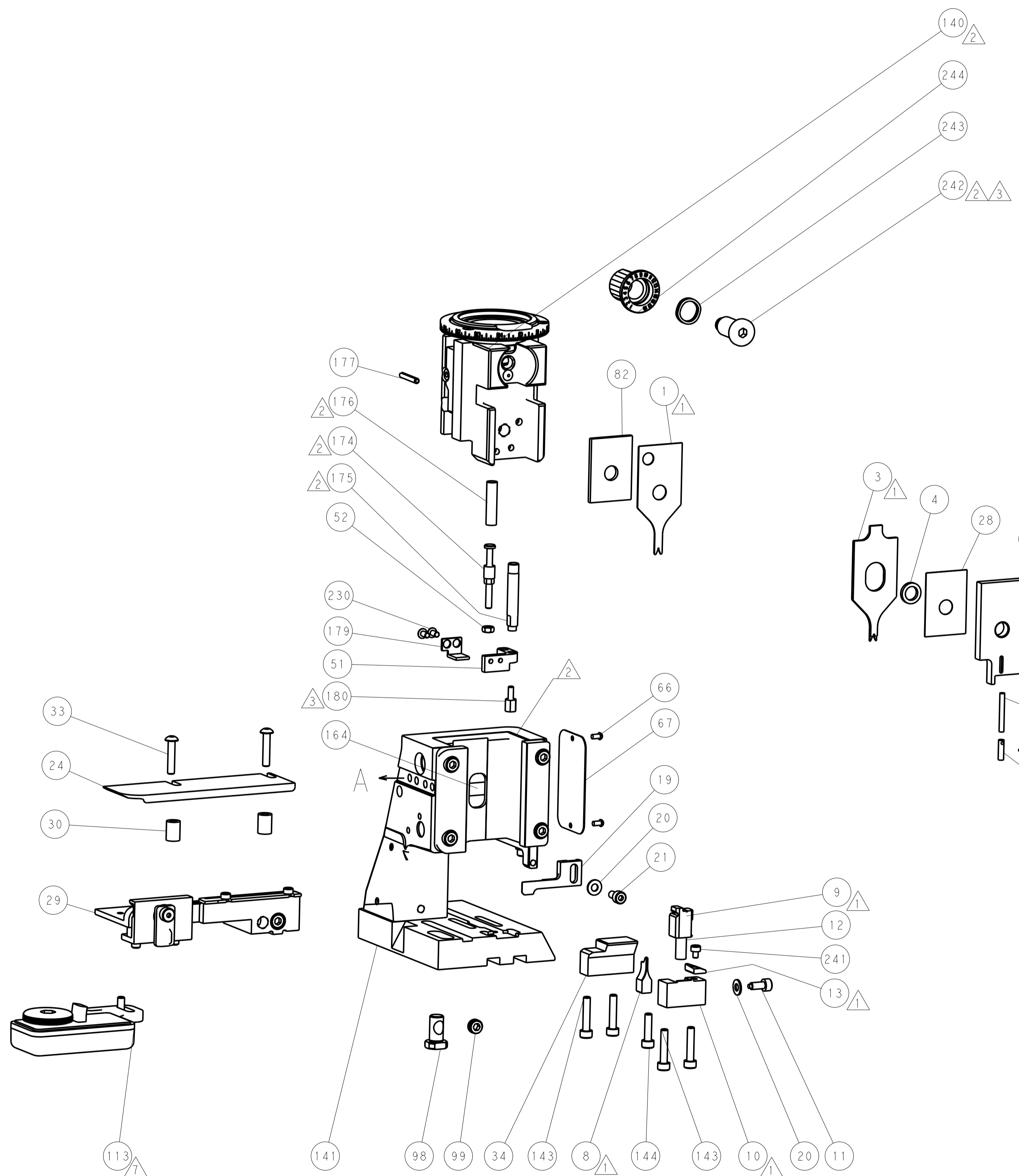
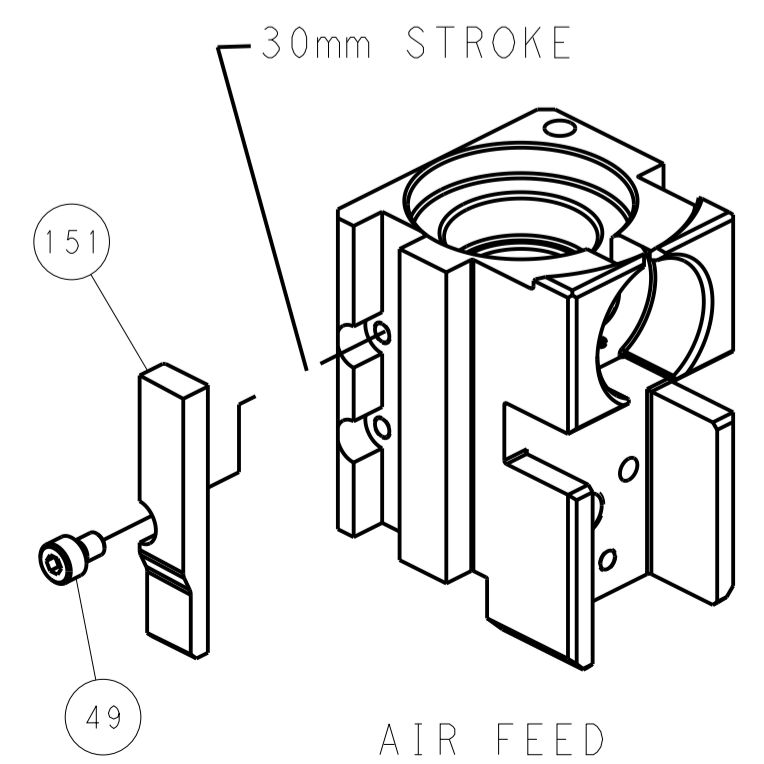
### FEED TYPE PNEUMATIC



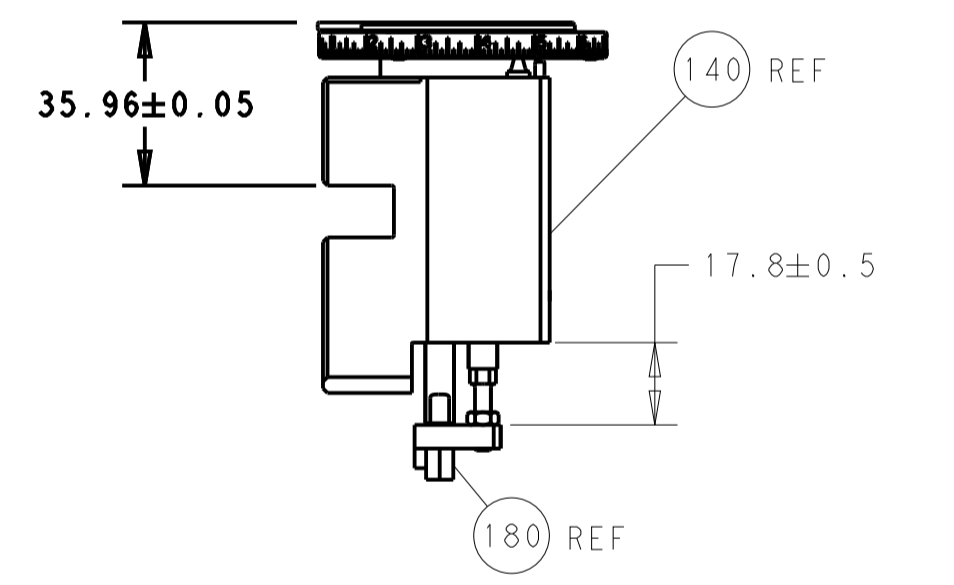
### FEED SPRING SETTING POSITION (SHOWN FROM REAR SIDE)



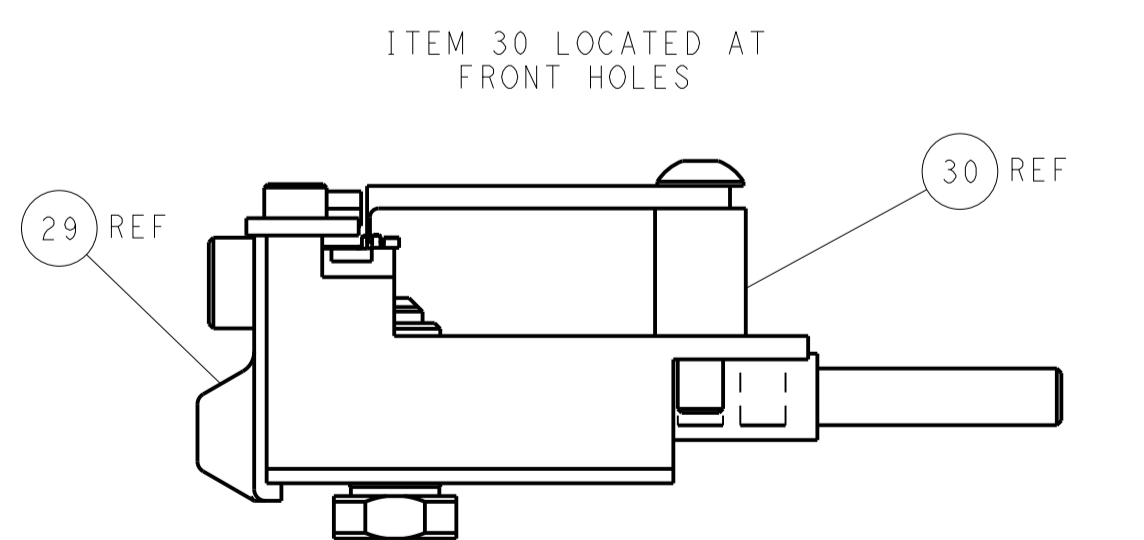
### CAM POSITION



TERMINAL SUPPORT LOCATION



RAM AND HOLDDOWN SET-UP



FEED TRACK POSITION GUIDE BY INSULATION BARREL

**PACIFIC VERSION**  
 Shown on sheets 3 of 4 & 4 of 4  
 (Atlantic version shown on sheets 1 of 4 & 2 of 4)

DIMENSIONS: mm 		TOLERANCES UNLESS OTHERWISE SPECIFIED: 0 PLC ± 1 PLC ± 2 PLC ± 3 PLC ± 4 PLC ± ANGLES ±		DWN X ZHAO 22DEC2015 CHK L ZHANG 22DEC2015 APVD JJ GUO 22DEC2015		NAME: Ocean Side Feed Applicator SIZE: A1 CAGE CODE: 00779 DRAWING NO: 2836152		RESTRICTED TO:	
MATERIAL:		FINISH:		WEIGHT:		SCALE: 1:2		SHEET 4 OF 4 REV D	

# Mouser Electronics

Authorized Distributor

Click to View Pricing, Inventory, Delivery & Lifecycle Information:

[TE Connectivity:](#)

[7-2836152-7](#)