

PART NUMBER	REVISION	DESCRIPTION	FEED TYPE
2151498-1	B	FINE CRIMP HEIGHT ADJUST	MECHANICAL
2151498-2	B	FINE CRIMP HEIGHT ADJUST	PNEUMATIC
7-2151498-1	B	MECHANICAL AND CRIMP TOOLING KIT	MECHANICAL
7-2151498-2	B	PNEUMATIC AND CRIMP TOOLING KIT	PNEUMATIC
7-2151498-7	A	CRIMP TOOLING KIT	-

ATLANTIC VERSION TERMINATOR INTERFACE ADAPTER

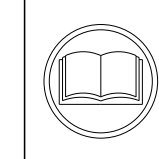


APPLICATOR DATA		
CRIMP	SIZE	TYPE
WIRE	5.33mm [.210 IN]	F
INSUL	-	-

APPLICATOR INSTRUCTIONS
408-35042

TERMINAL DATA: TE TERMINAL		TE CRIMP SPECIFICATION	
TERMINAL NAME: TERMINAL, RING			
WIRE STRIP LENGTH		INSULATION DIAMETER RANGE	
6.35 mm [.250 IN]			
TERMINAL APPLICATION SPECIFICATION	114-2084		
TERMINALS APPLIED			
TE TERMINAL	TE TERMINAL	TE TERMINAL	TE TERMINAL
41356	41341		

WIRE SIZE	CRIMP HEIGHT INCH [mm]	CRIMP HEIGHT REFERENCE SETTING
10 AWG	3.38+/-0.05 [0.133+/-0.002]	8.5
12 AWG	3.07+/-0.05 [0.121+/-0.002]	12.4



- 1. RECOMMENDED SPARE PARTS
- 2. REFER TO SUPPLIED INSTRUCTION SHEET FOR CLEANING, LUBRICATION AND STORAGE OF APPLICATOR.
- 3. CRIMP HEIGHT REFERENCE SETTING WAS THE SETTING USED WHEN THE APPLICATOR WAS QUALIFIED AT THE FACTORY. ADJUSTMENT MAY BE NECESSARY WHEN RUNNING APPLICATOR IN THE FIELD.
- 4. UNLESS SPECIFIED OTHERWISE TORQUE VALUES SHALL BE USED PER DOCUMENT, 101-35000.

***WARNING**
ON INSTALLATION, SET WIRE DISC TO CRIMP HEIGHT REFERENCE SETTING FOR LARGEST WIRE SIZE. CRIMP HEIGHT REFERENCE SETTINGS GREATER THAN THE VALUE SHOWN MAY CAUSE DAMAGE TO THE CRIMP TOOLING. REFER TO THE INSTRUCTION SHEET FOR PROPER SETUP AND ADJUSTMENTS.

ATLANTIC VERSION
Shown on sheets 1 of 4 & 2 of 4
(Pacific version shown on sheets 3 of 4 & 4 of 4)

LOC	DIST	REVISIONS					
A	66	P	LTN	DESCRIPTION	DATE	OWN	APVD
		A		RELEASED	30APR2012	BW	GB
		B		ECR-21-113617	14SEP2021	JWC	TE

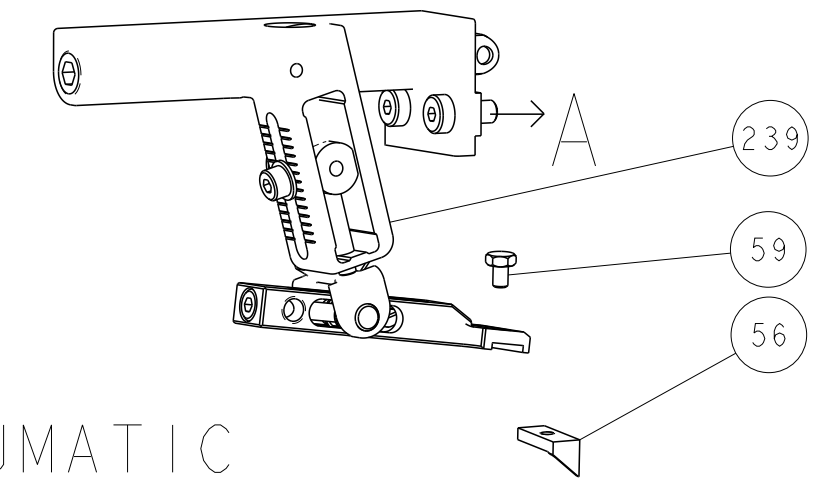
-	1	-	1	-	2119641-1	FEED CAM, AIR FEED	248
-	-	1	-	1	2119580-1	MECHANICAL FEED ASSEMBLY	239
-	1	-	1	-	2844940-1	AIR FEED MODULE	238
-	1	1	1	1	1673019-1	BLADE, SLUG	232
-	1	1	1	1	1976043-1	PIN, BALL LOCK, THREADED	180
-	1	1	1	1	993111-1	PIN, SLOTTED SPRING 3.0 X 20.0	177
-	REF	REF	REF	REF	994970-2	COUNTER, MAGNETIC	164
-	1	1	1	1	1901694-1	FEED FINGER ASSEMBLY,SF	118
-	1	1	1	1	2844908-1	SCREW, LOCKING	99
-	1	1	1	1	2844907-1	POST, LOCKING	98
-	1	1	1	1	455888-5	SPACER, CRIMPER	82
-	1	1	1	1	1803607-3	DOCUMENTATION PACKAGE	71
-	1	1	1	1	2119740-1	TAG,IDENTIFICATION	67
-	2	2	2	2	2168078-1	SCREW, DRIVE, RH, RoHS, 2 x .188	66
-	1	1	1	1	2168083-2	SCR, SKT HD CAP, RoHS, M4 X 8.0	60
-	1	1	1	1	5-18022-5	SCR, HEX HD CAP, M4 X 6.0	59
-	1	1	1	1	1338683-1	FEED PAWL	56
-	2	2	2	2	1-22284-0	SPRING, COMPRESSION	52
-	1	1	1	1	1-22281-8	SPRING, COMPRESSION	51
-	1	1	1	1	2168083-6	SCR, SKT HD CAP, RoHS, M5 X 6.5	50
-	1	2	1	2	18023-9	SCR, SKT HD CAP M4 X 6.0	49
-	-	1	-	1	2119652-1	FEED CAM, PRE FEED	48
-	-	1	-	1	2119653-1	FEED CAM, POST FEED	47
-	1	1	1	1	1803583-9	APPLICATOR BASIC ASSEMBLY, SF	46
-	2	2	2	2	2168083-9	SCR, SKT HD CAP, RoHS, M4 X 20	45
-	1	1	1	1	1803515-1	RAM ASSEMBLY, SF ATLANTIC	44
-	1	1	1	1	1-18023-1	SCR, SKT HD CAP M4 X 10.0	43
-	1	1	1	1	980371-4	SCR, SKT HD SHLDR 5.0 DIA X 6.0	42
-	1	1	1	1	1803602-1	SCR, BHSC, RoHS (M8 X 25)	41
-	2	2	2	2	2168083-2	SCR, SKT HD CAP, RoHS, M4 X 8.0	36
-	2	2	2	2	18023-5	SCR, SKT HD CAP M3 X 12.0	34
-	2	2	2	2	2168083-1	SCR, SKT HD CAP, RoHS, M3 X 8.0	33
-	2	2	2	2	2-18032-5	SCR, SET, FLT PNT, M5 X 20.0	31
-	1	1	1	1	2844938-1	PLATE, STRIP GUIDE	29
-	1	1	1	1	356835-1	LEVER, DRAG RELEASE	27
-	1	1	1	1	2119924-2	SHEAR, LOWER	22
-	1	1	1	1	2168083-2	SCR, SKT HD CAP, RoHS, M4 X 8.0	21
-	1	1	1	1	1-18028-2	WASHER, FLAT, REG M4	20
-	1	1	1	1	2119533-1	STRIPPER, SIDE FEED	19
-	1	1	1	1	1-2119928-6	FENCE	12
-	1	1	1	1	2119830-2	HOLDER, SLUG BLADE	11
1	2	2	1	1	2119923-1	ANVIL, SPECIAL	8
-	1	1	1	1	3-690754-6	DRAG, SPECIAL	7
-	1	1	1	1	1-679651-9	FRONT STRIP GUIDE	6
1	2	2	1	1	9-568176-6	CRIMPER, WIRE	1
-	77	-72	-71	-2	-1	PART NO	ITEM NO

DIMENSIONS:		TOLERANCES UNLESS OTHERWISE SPECIFIED:		MATERIAL:	
mm	0 PLC ±	1 PLC ±	2 PLC ±	3 PLC ±	4 PLC ±
	ANGLES	FINISH			

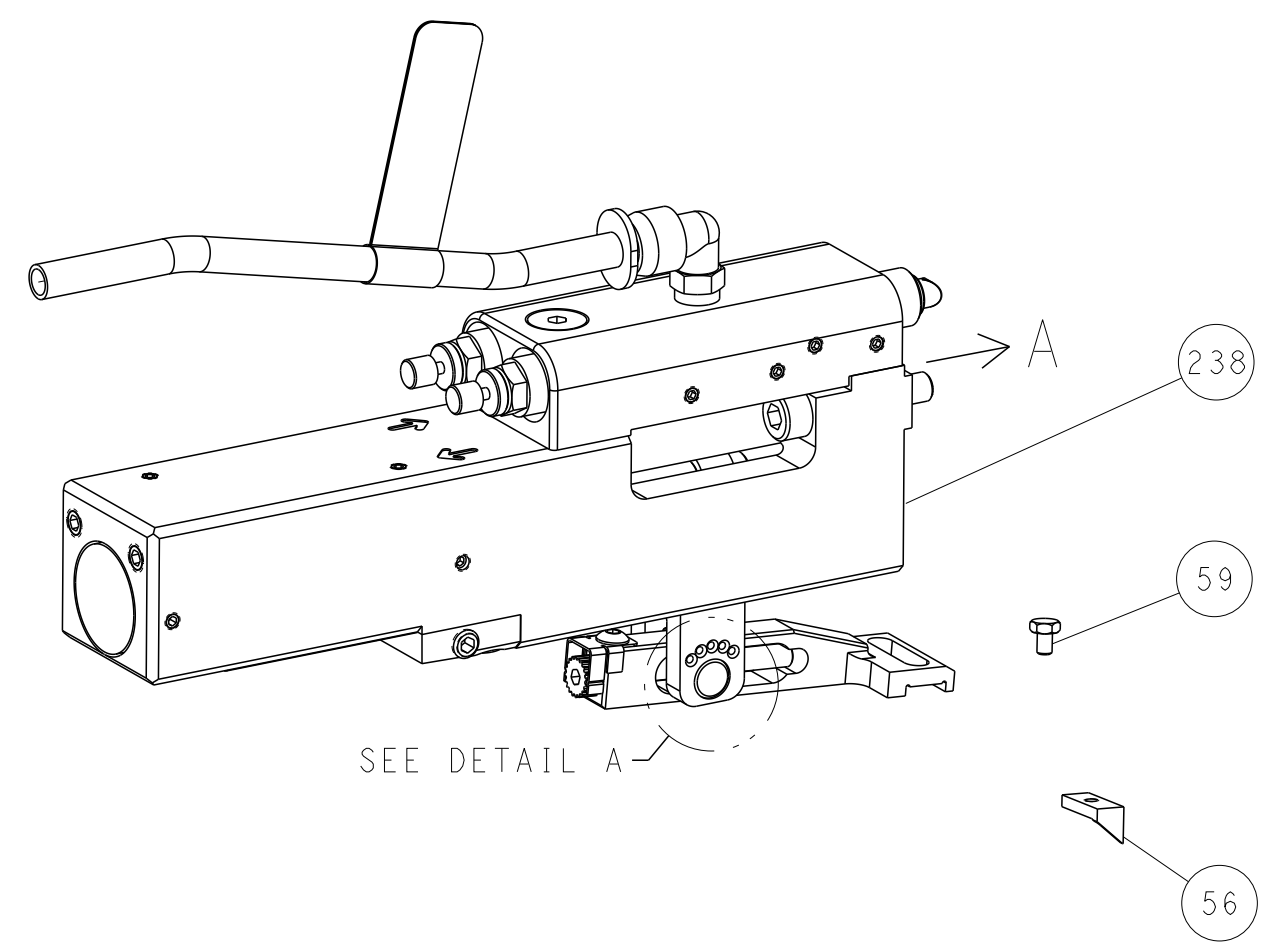
OWN: B. WEAVER	14SEP2011	TE Connectivity Harrisburg, PA 17105-3608
CHK: K. STAKEM	14SEP2011	
APVD: T. ELBIN	14SEP2011	
NAME:	Ocean Side Feed Applicator	
SIZE:	A1	CAGE CODE: 00779
DRAWING NO:	C=2151498	RESTRICTED TO:
SCALE:	1:2	SHEET 1 OF 4
Customer Accessible Production Drawing	REV: B	

LOC	DIST	REVISIONS					
A	66	P	LTN	DESCRIPTION	DATE	DWN	APVD
		-		SEE SHEET 1	-	-	-

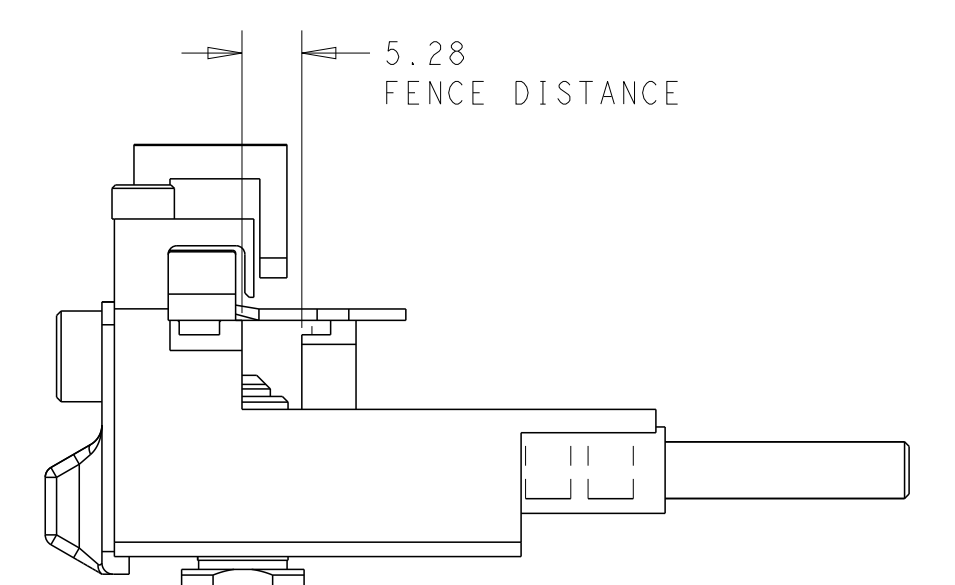
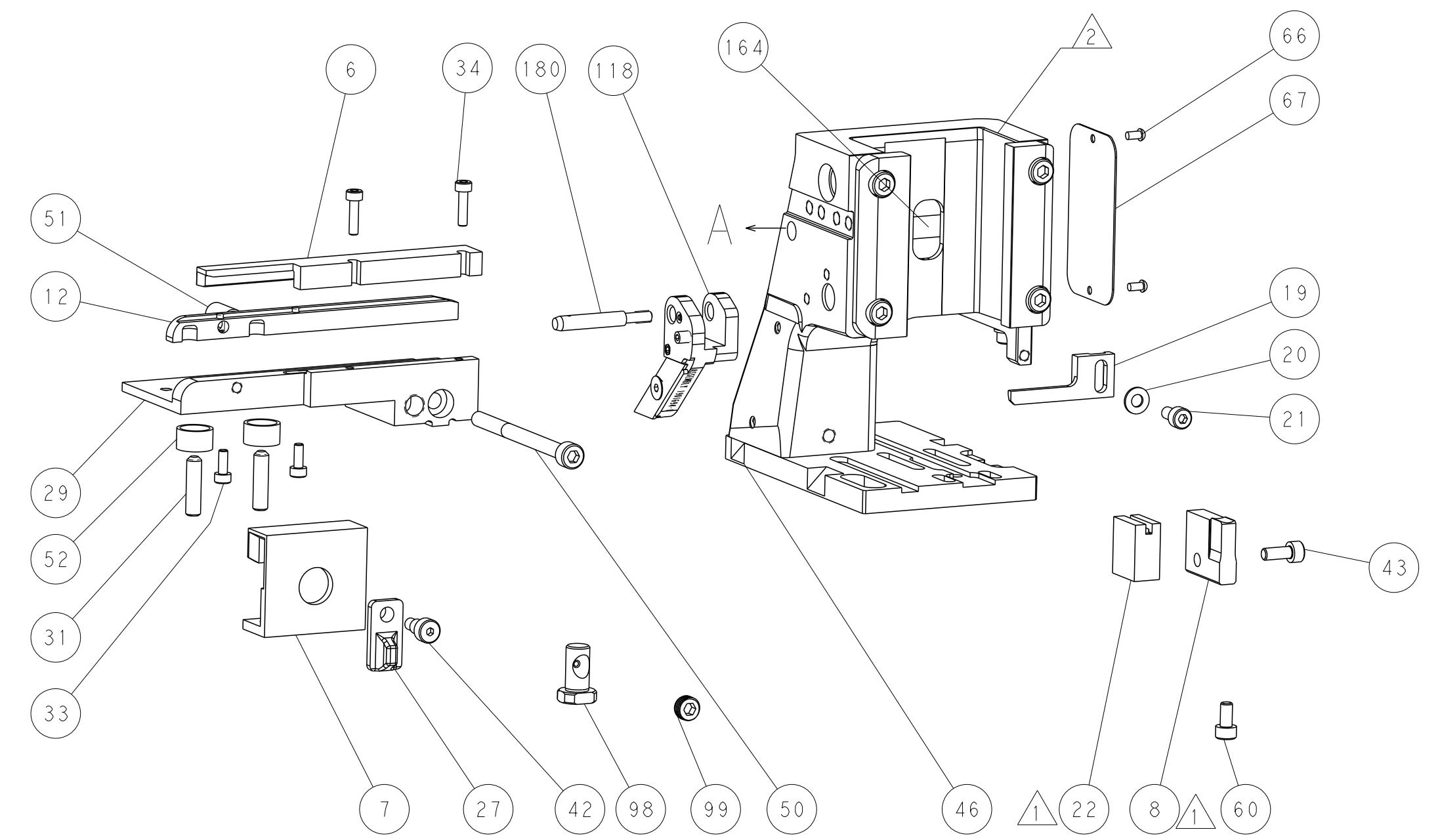
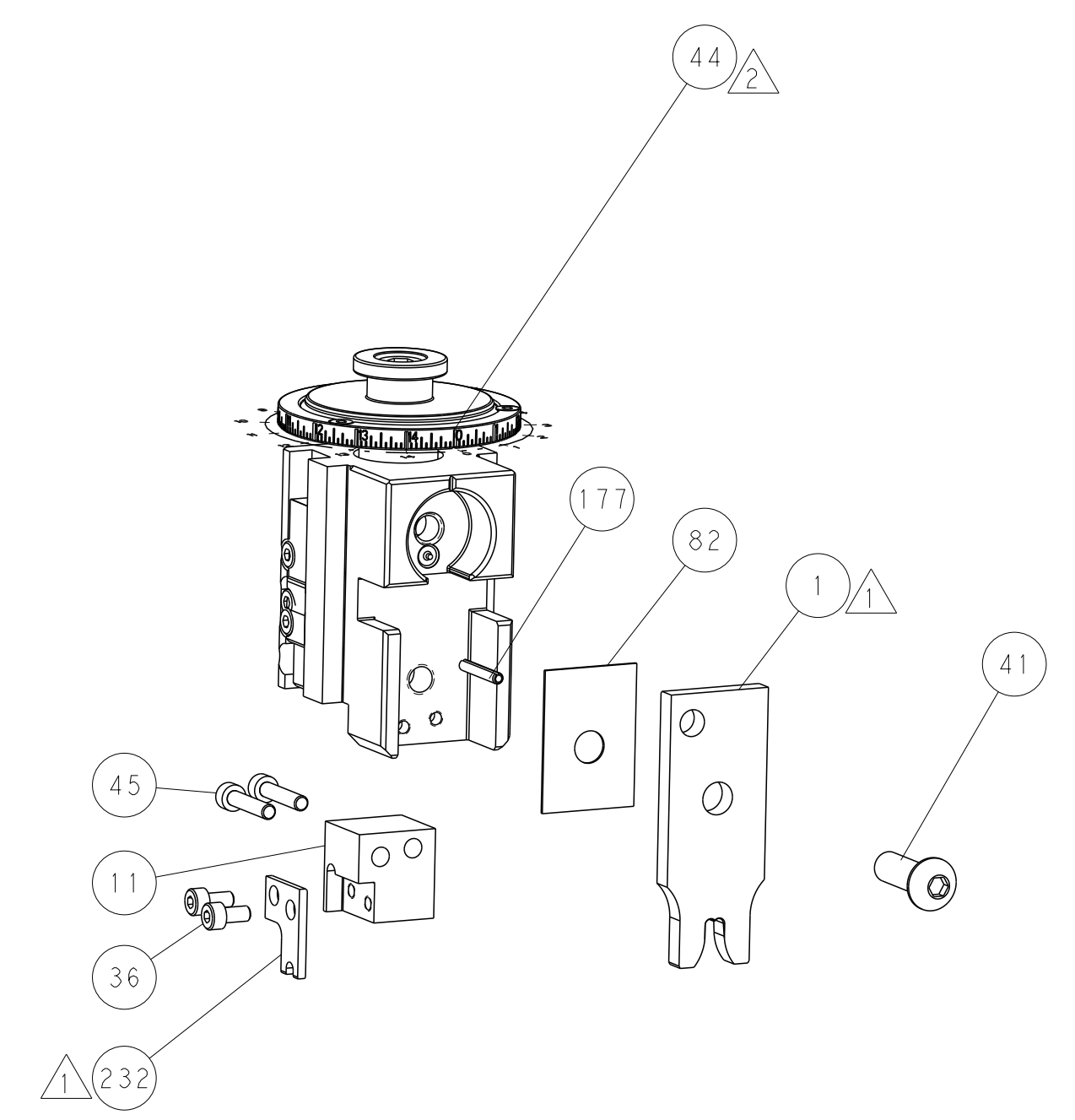
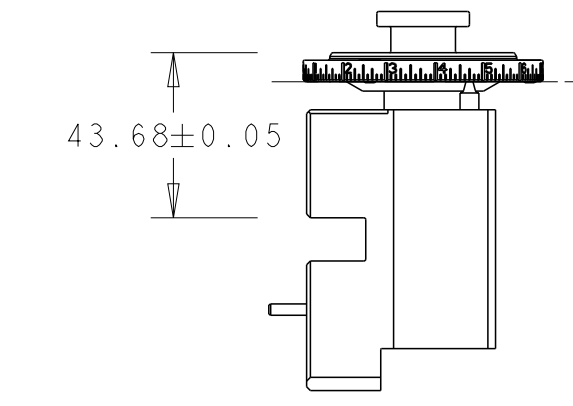
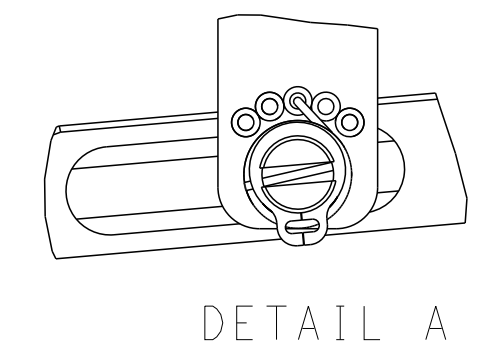
FEED TYPE MECHANICAL



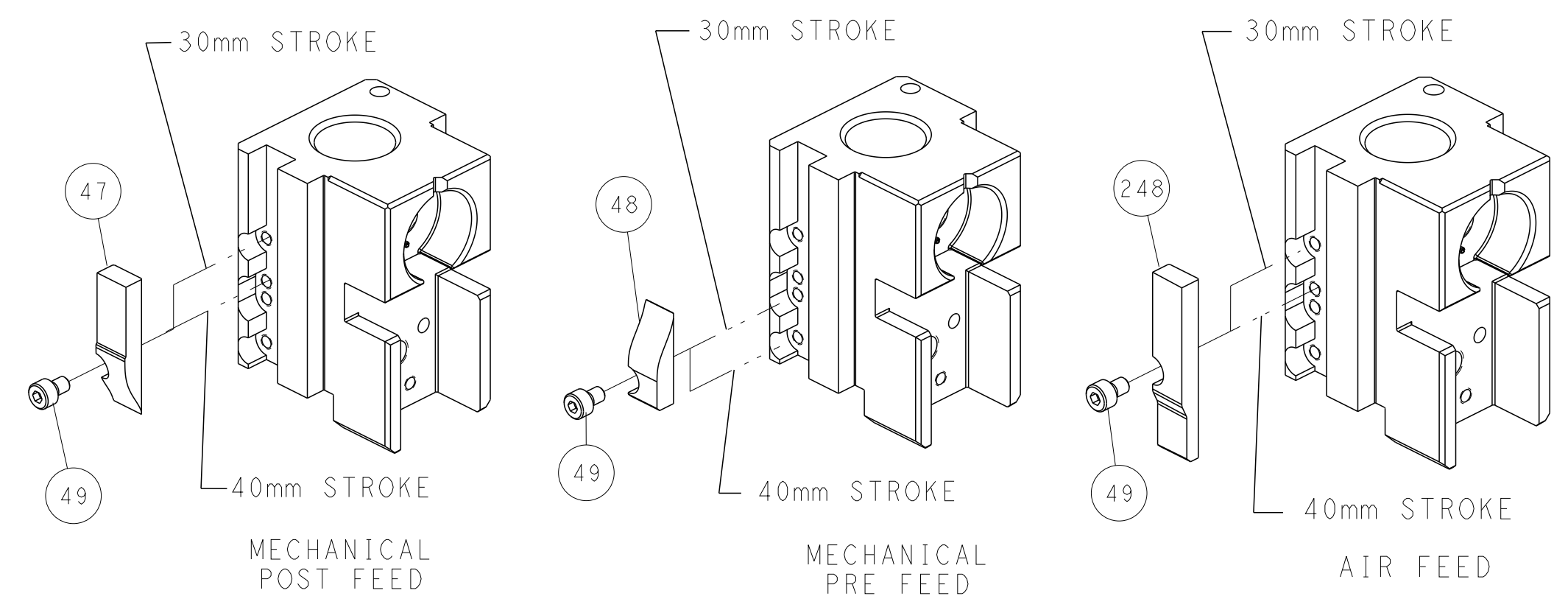
PNEUMATIC



FEED SPRING SETTING POSITION (SHOWN FROM REAR SIDE)



CAM POSITIONS



ATLANTIC VERSION
 Shown on sheets 1 of 4 & 2 of 4
 (Pacific version shown on sheets 3 of 4 & 4 of 4)

<small>THIS DRAWING IS UNPUBLISHED. RELEASED FOR PUBLICATION 2011. IT IS THE PROPERTY OF TYCO ELECTRONICS CORPORATION. IT IS TO BE USED ONLY FOR THE PURPOSES AND IN THE QUANTITIES SPECIFIED IN THE ORDER. IT IS TO BE RETURNED TO TYCO ELECTRONICS CORPORATION UPON COMPLETION OF THE PROJECT.</small>		DWN: B. WEAVER 14SEP2011 CHK: K. STAKEM 14SEP2011 APVD: T. ELBIN 14SEP2011	TE Connectivity Harrisburg, PA 17105-3608
DIMENSIONS: mm TOLERANCES UNLESS OTHERWISE SPECIFIED: 0 PLC ± 1 PLC ± 2 PLC ± 3 PLC ± 4 PLC ± ANGLES ± FINISH ±		NAME: Ocean Side Feed Applicator SIZE: A1 CAGE CODE: 00779 DRAWING NO: C=2151498	RESTRICTED TO: - SCALE: 1:2 SHEET: 2 of 4 REV: B
MATERIAL: - FINISH: -		WEIGHT: - Customer Accessible Production Drawing	SHEETS 3 & 4 ARE NOT REQUIRED FOR ATLANTIC VERSION

PART NUMBER	REVISION	DESCRIPTION	FEED TYPE
2-2151498-1	B	FINE CRIMP HEIGHT ADJUST	MECHANICAL
2-2151498-2	B	FINE CRIMP HEIGHT ADJUST	PNEUMATIC
7-2151498-7	A	CRIMP TOOLING KIT	-

PACIFIC VERSION TERMINATOR
 INTERFACE ADAPTER



APPLICATOR DATA		
CRIMP	SIZE	TYPE
WIRE	5.33mm (.210 IN)	F
INSUL	-	-
APPLICATOR INSTRUCTIONS 408-35042		

TERMINAL DATA: TE TERMINAL		TE CRIMP SPECIFICATION	
TERMINAL NAME: TERMINAL, RING			
WIRE STRIP LENGTH		INSULATION DIAMETER RANGE	
6.35 mm (.250 IN)			
TERMINAL APPLICATION SPECIFICATION	114-2084	-	-
TERMINALS APPLIED			
TE TERMINAL	TE TERMINAL	TE TERMINAL	TE TERMINAL
41356	41341		

WIRE SIZE	CRIMP HEIGHT INCH [mm]	CRIMP HEIGHT REFERENCE SETTING
10 AWG	3.38+/-0.05 [0.133+/-0.002]	8.5
12 AWG	3.07+/-0.05 [0.121+/-0.002]	12.4

- 1. RECOMMENDED SPARE PARTS
- 2. REFER TO SUPPLIED INSTRUCTION SHEET FOR CLEANING, LUBRICATION AND STORAGE OF APPLICATOR.
- 3. CRIMP HEIGHT REFERENCE SETTING WAS THE SETTING USED WHEN THE APPLICATOR WAS QUALIFIED AT THE FACTORY. ADJUSTMENT MAY BE NECESSARY WHEN RUNNING APPLICATOR IN THE FIELD.
- 4. UNLESS SPECIFIED OTHERWISE TORQUE VALUES SHALL BE USED PER DOCUMENT, 101-35000.

***WARNING**
 ON INSTALLATION, SET WIRE DISC TO CRIMP HEIGHT REFERENCE SETTING FOR LARGEST WIRE SIZE. CRIMP HEIGHT REFERENCE SETTINGS GREATER THAN THE VALUE SHOWN MAY CAUSE DAMAGE TO THE CRIMP TOOLING. REFER TO THE INSTRUCTION SHEET FOR PROPER SETUP AND ADJUSTMENTS.

PACIFIC VERSION
 Shown on sheets 3 of 4 & 4 of 4
 (Atlantic version shown on sheets 1 of 4 & 2 of 4)

LOC	DIST	REVISIONS					
A	66	P	LTN	DESCRIPTION	DATE	OWN	APVD
-	-	-	-	SEE SHEET 1	-	-	-

-	-	1	2119580-1	MECHANICAL FEED ASSEMBLY	239
-	1	-	2844940-1	AIR FEED MODULE	238
-	1	1	1673019-1	BLADE, SLUG	232
-	1	1	1976043-1	PIN, BALL LOCK, THREADED	180
-	1	1	993111-1	PIN, SLOTTED SPRING 3.0 X 20.0	177
-	REF	REF	994970-2	COUNTER, MAGNETIC	164
-	1	-	2119641-2	FEED CAM, AIR FEED	151
-	1	1	2168083-8	SCR, SKT HD CAP, RoHS, M4 X 16	144
-	-	1	2119653-2	FEED CAM, POST FEED	142
-	1	1	1803583-2	APPLICATOR BASIC ASSEMBLY, SF	141
-	1	1	1803516-1	RAM ASSEMBLY, SF PACIFIC	140
-	1	1	1901694-1	FEED FINGER ASSEMBLY,SF	118
-	1	1	2844908-1	SCREW, LOCKING	99
-	1	1	2844907-1	POST, LOCKING	98
-	1	1	455888-5	SPACER, CRIMPER	82
-	1	1	1803607-3	DOCUMENTATION PACKAGE	71
-	1	1	2119740-1	TAG, IDENTIFICATION	67
-	2	2	2168078-1	SCREW, DRIVE, RH, RoHS, 2 x .188	66
-	1	1	5-18022-5	SCR, HEX HD CAP, M4 X 6.0	59
-	1	1	1338683-1	FEED PAWL	56
-	2	2	1-22284-0	SPRING, COMPRESSION	52
-	1	1	1-22281-8	SPRING, COMPRESSION	51
-	1	1	2168083-6	SCR, SKT HD CAP, RoHS, M5 X 65	50
-	1	2	18023-9	SCR, SKT HD CAP M4 X 6.0	49
-	-	1	2119652-1	FEED CAM, PRE FEED	48
-	2	2	2168083-9	SCR, SKT HD CAP, RoHS, M4 X 20	45
-	1	1	1-18023-1	SCR, SKT HD CAP M4 X 10.0	43
-	1	1	980371-4	SCR, SKT HD SHLDR 5.0 DIA X 6.0	42
-	1	1	1803602-1	SCR, BHSC, RoHS (M8 X 25)	41
-	2	2	2168083-2	SCR, SKT HD CAP, RoHS, M4 X 8.0	36
-	2	2	18023-5	SCR, SKT HD CAP M3 X 12.0	34
-	2	2	2168083-1	SCR, SKT HD CAP, RoHS, M3 X 8.0	33
-	2	2	2-18032-5	SCR, SET, FLT PNT, M5 X 20.0	31
-	1	1	2844938-1	PLATE, STRIP GUIDE	29
-	1	1	356835-1	LEVER, DRAG RELEASE	27
-	1	1	2119924-2	SHEAR, LOWER	22
-	1	1	2168083-2	SCR, SKT HD CAP, RoHS, M4 X 8.0	21
-	1	1	1-18028-2	WASHER, FLAT, REG M4	20
-	1	1	2119533-1	STRIPPER, SIDE FEED	19
-	1	1	1-2119928-6	FENCE	12
-	1	1	2119830-2	HOLDER, SLUG BLADE	11
1	1	1	2119923-1	ANVIL, SPECIAL	8
-	1	1	3-690754-6	DRAG, SPECIAL	7
-	1	1	1-679651-9	FRONT STRIP GUIDE	6
1	1	1	9-568176-6	CRIMPER, WIRE	1

DIMENSIONS:		TOLERANCES UNLESS OTHERWISE SPECIFIED:		MATERIAL:		FINISH:	
mm	0 PLC ±	1 PLC ±	2 PLC ±	3 PLC ±	4 PLC ±	ANGLES	FINISH

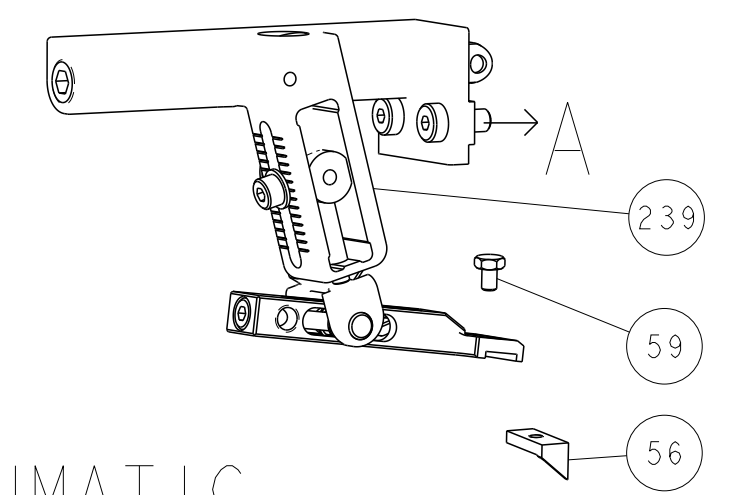
OWN	CHK	DATE	NAME
B. WEAVER	K. STAKEM	14SEP2011	
		14SEP2011	
		14SEP2011	

SIZE	CAGE CODE	DRAWING NO	RESTRICTED TO
A1	00779	2151498	

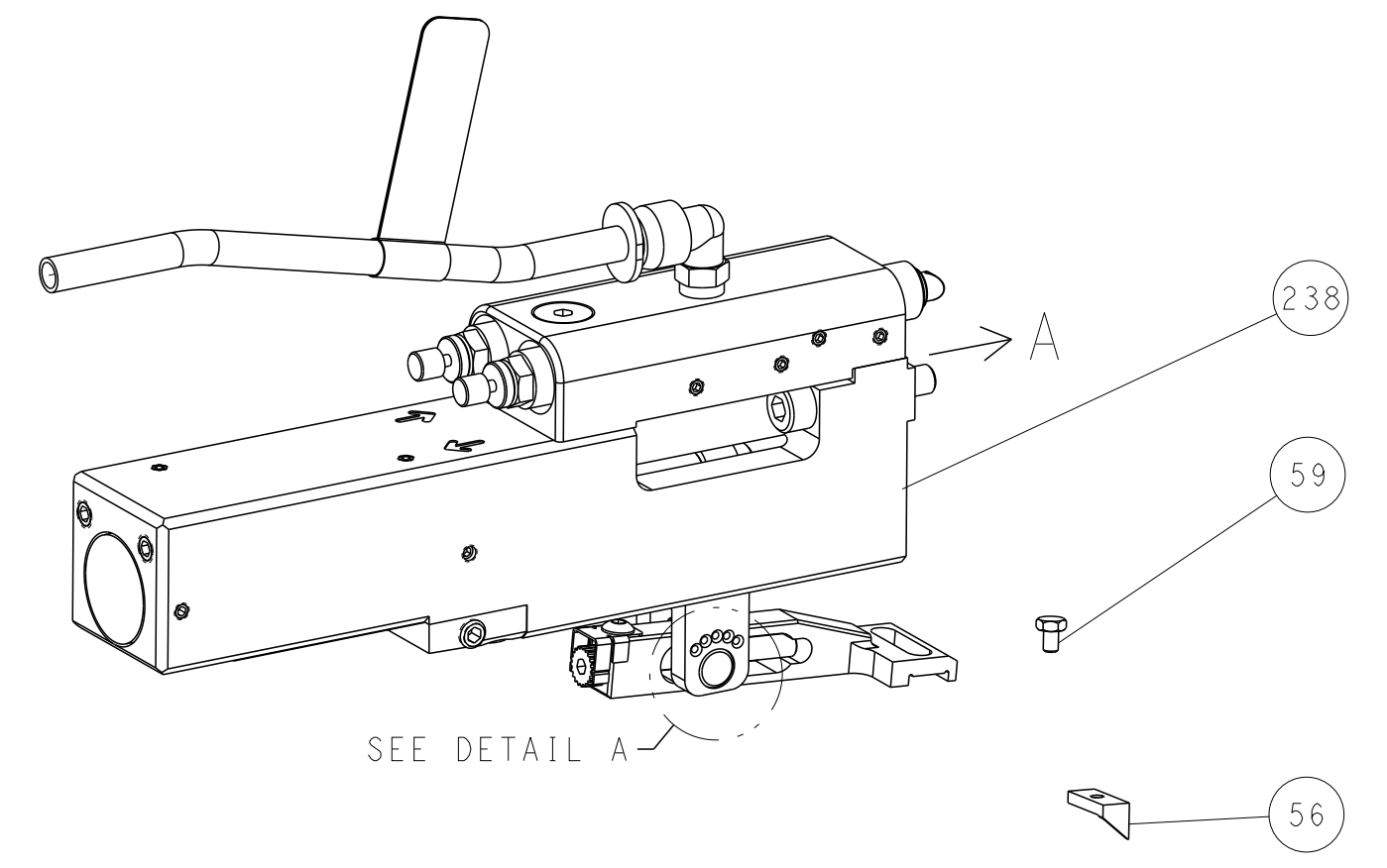
Customer Accessible Production Drawing SCALE 1:2 SHEET 3 OF 4 REV B

LOC	DIST	REVISIONS					
A	66	P	LTN	DESCRIPTION	DATE	OWN	APVD
		-		SEE SHEET 1	-	-	-

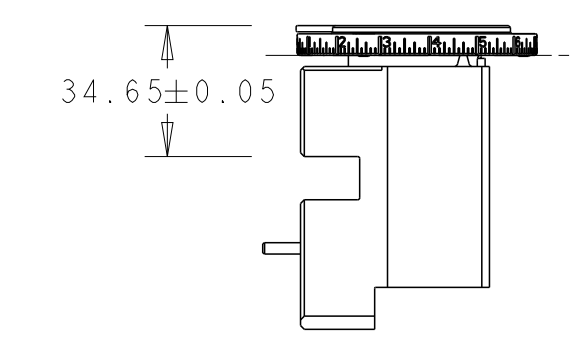
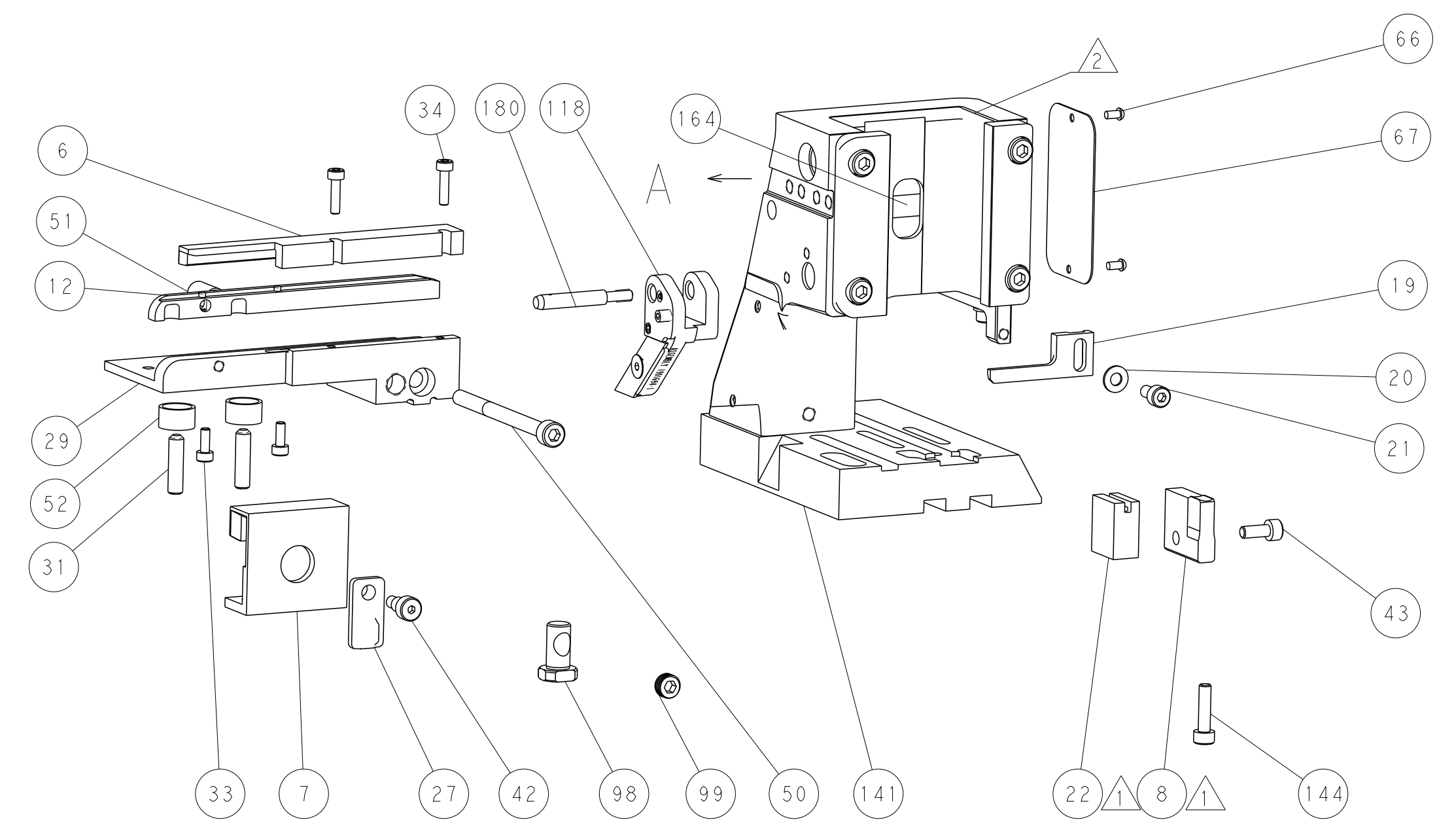
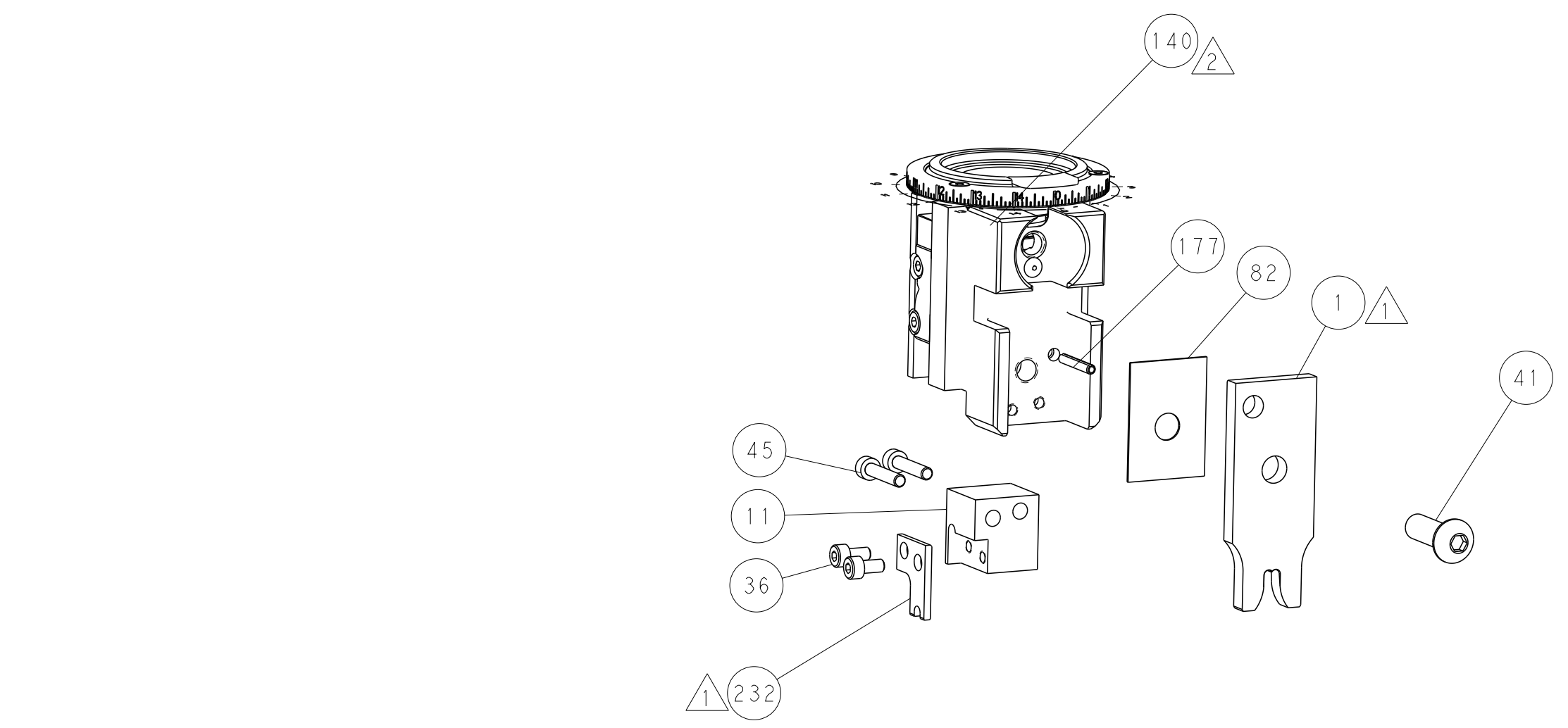
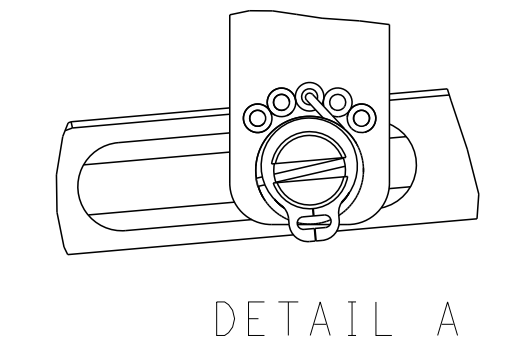
FEED TYPE MECHANICAL



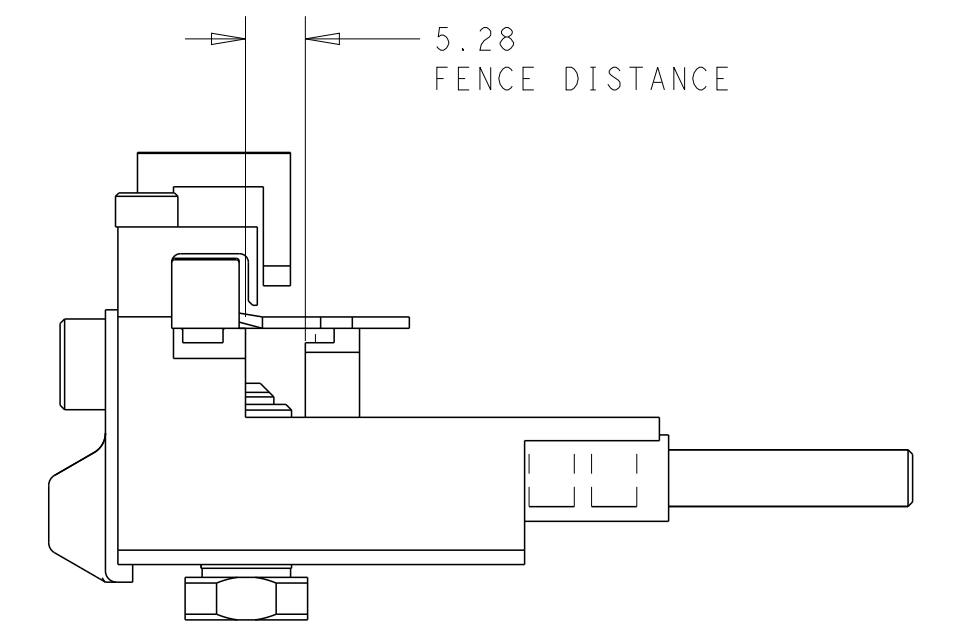
PNEUMATIC



FEED SPRING SETTING POSITION (SHOWN FROM REAR SIDE)

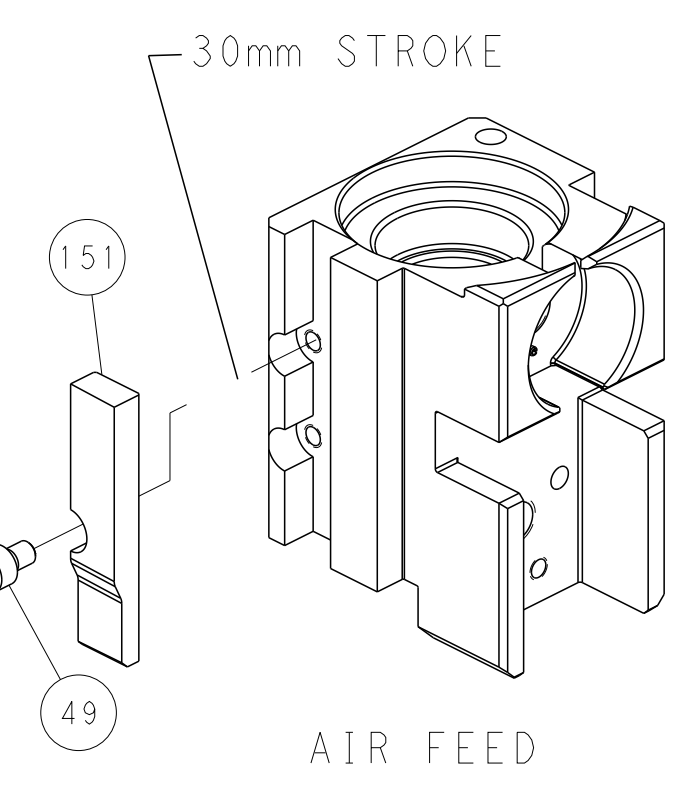
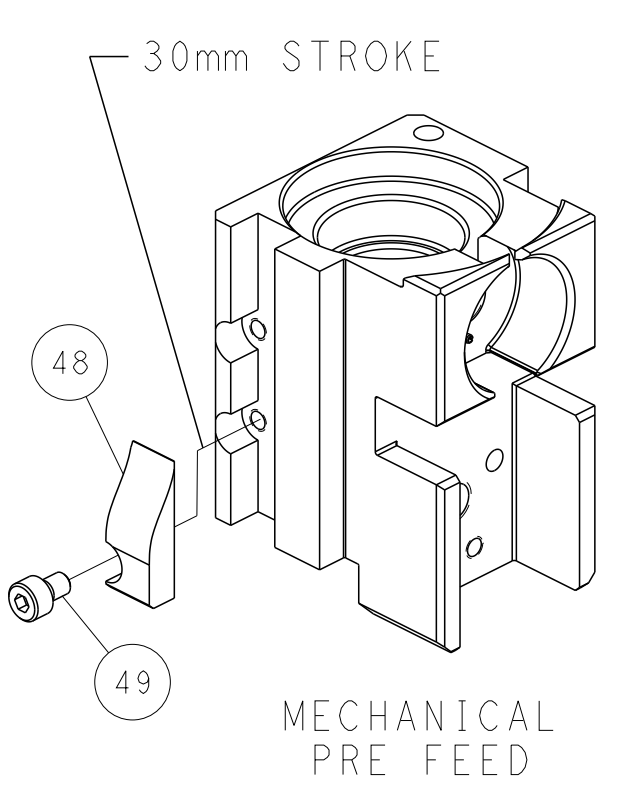
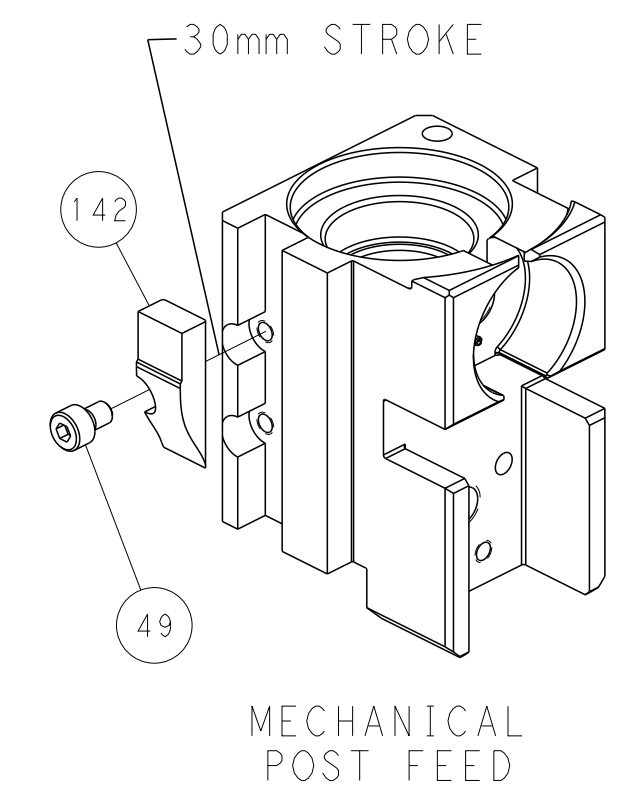


RAM SET-UP



FEED TRACK POSITION
GUIDE BY WIRE BARREL

CAM POSITIONS



PACIFIC VERSION
 Shown on sheets 3 of 4 & 4 of 4
 (Atlantic version shown on sheets 1 of 4 & 2 of 4)

<small>THIS DRAWING IS UNPUBLISHED. RELEASED FOR PUBLICATION 2011. ALL RIGHTS RESERVED. THIS DRAWING IS THE PROPERTY OF TYCO ELECTRONICS CORPORATION. IT IS THE POLICY OF TYCO ELECTRONICS CORPORATION TO CONTROL THE DISTRIBUTION OF THIS DRAWING TO THE USER'S ORGANIZATION. IT IS THE USER'S RESPONSIBILITY TO CONTROL THE DISTRIBUTION OF THIS DRAWING TO THE USER'S ORGANIZATION.</small>		DWN B. WEAVER 14SEP2011 CHK K. STAKEM 14SEP2011 APVD T. ELBIN 14SEP2011	TE Connectivity Harrisburg, PA 17105-3608
DIMENSIONS: mm 		TOLERANCES UNLESS OTHERWISE SPECIFIED: 0 PLC ± 1 PLC ± 2 PLC ± 3 PLC ± 4 PLC ± ANGLES ± FINISH ±	NAME: Ocean Side Feed Applicator SIZE: A1 CAGE CODE: 00779 DRAWING NO: 2151498 SCALE: 1:2 SHEET: 4 OF 4 REV: B
MATERIAL:		WEIGHT:	RESTRICTED TO:

Mouser Electronics

Authorized Distributor

Click to View Pricing, Inventory, Delivery & Lifecycle Information:

[TE Connectivity:](#)

[2151498-2](#)