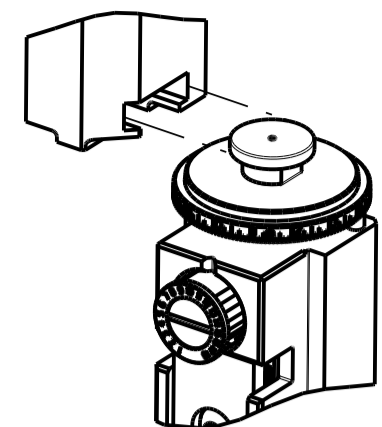


PART NUMBER	REVISION	DESCRIPTION	FEED TYPE
2151332-2	Z	FINE CRIMP HEIGHT ADJUST	PNEUMATIC
3-2151332-2	Z	FINE CRIMP HEIGHT ADJUST	DOUBLE ACTING PNEUMATIC WITH SENSORS
7-2151332-2	Z	PNEUMATIC AND CRIMP TOOLING KIT	PNEUMATIC
7-2151332-7	Y	CRIMP TOOLING KIT	-

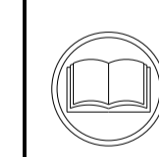
ATLANTIC VERSION TERMINATOR INTERFACE ADAPTER



APPLICATOR DATA		
CRIMP	SIZE	TYPE
WIRE	0.89 mm [0.035]	F
INSUL	1.07 mm [0.042]	O
APPLICATOR INSTRUCTIONS 408-35042		

TERMINAL DATA: TE TERMINAL		TE CRIMP SPECIFICATION	
TERMINAL NAME: NANO MQS TERMINAL			
WIRE STRIP LENGTH		INSULATION DIAMETER RANGE	
3.25-3.55 mm [0.128-.140 IN]		Ø0.85-1.10 mm [0.033-.043 IN]	
TERMINAL APPLICATION SPECIFICATION		114-18858	
TERMINALS APPLIED			
TE TERMINAL	TE TERMINAL	TE TERMINAL	TE TERMINAL
1-1703930-1	1-1703930-2		

WIRE SIZE	CRIMP HEIGHT mm [INCH]	CRIMP HEIGHT REFERENCE SETTING
0.17mm <sup>2</sup>	0.63+/-0.02 [0.0248+/-0.0008]	6.5
0.13mm <sup>2</sup>	0.59+/-0.02 [0.0232+/-0.0008]	7.0



- 1. RECOMMENDED SPARE PARTS
- 2. REFER TO SUPPLIED INSTRUCTION SHEET FOR CLEANING, LUBRICATION AND STORAGE OF APPLICATOR.
- 3. APPLY PART NUMBER 2-23419-6 LOCTITE TO THREADS OF ITEM 242.
- 4. CRIMP HEIGHT REFERENCE SETTING WAS THE SETTING USED WHEN THE APPLICATOR WAS QUALIFIED AT THE FACTORY. ADJUSTMENT MAY BE NECESSARY WHEN RUNNING APPLICATOR IN THE FIELD.
- 5. THIS APPLICATOR IS EQUIPPED WITH THE DOUBLE ACTING FEED WITH SENSORS AND IS APPLICATION SPECIFIC AND DOES NOT REQUIRE ITEMS 49 & 248.
- 6. TERMINAL LUBRICANT IS RECOMMENDED.
- 7. UNLESS SPECIFIED OTHERWISE TORQUE VALUES SHALL BE USED PER DOCUMENT, 101-35000.

**\*WARNING**  
ON INSTALLATION, SET WIRE DISC TO CRIMP HEIGHT REFERENCE SETTING FOR LARGEST WIRE SIZE. CRIMP HEIGHT REFERENCE SETTINGS GREATER THAN THE VALUE SHOWN MAY CAUSE DAMAGE TO THE CRIMP TOOLING. REFER TO THE INSTRUCTION SHEET FOR PROPER SETUP AND ADJUSTMENTS

ATLANTIC VERSION  
Shown on sheets 1 of 4 & 2 of 4  
(Pacific version shown on sheets 3 of 4 & 4 of 4)

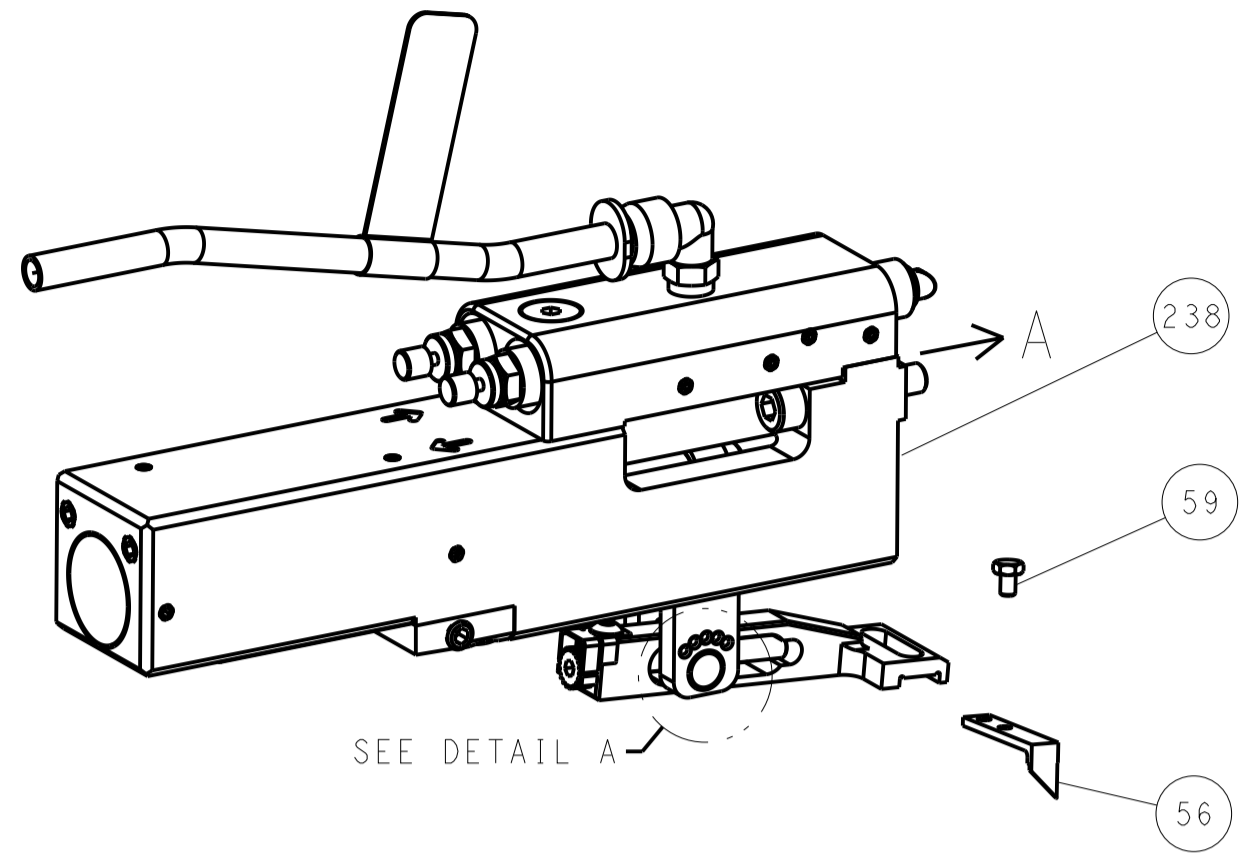
LOC	DIST	REV	LTN	DESCRIPTION	DATE	DWN	APVD
A	66	W		ECR-19-005393	03APR2019	JAH	CT
		Y		ECR-19-016655	25OCT2019	FJ	GB
		Z		ECR-21-001302	01FEB2021	JWC	GB
		Z1		ECR-21-003710	26MAR2021	FJ	YY

-	-	1	-	2844950-1	AIR FEED MODULE	290				
-	1	1	1	2119791-9	DEPRESSOR, WIRE	286				
-	1	1	1	1-22281-8	SPRING, COMPRESSION	262				
-	1	1	1	2168083-6	SCR, SKT HD CAP, RoHS, M5 X 6.5	261				
-	1	-	1	2119641-1	FEED CAM, AIR FEED	248				
-	1	1	1	2119082-5	CAM, SNAIL, INSULATION ADJUSTMENT	244				
-	1	1	1	2079764-1	WASHER, WAVE SPRING, CREST-TO-CREST	243				
-	1	1	1	2119083-1	RETAINER, INSULATION DIAL	242				
-	1	-	1	2844940-1	AIR FEED MODULE	238				
-	REF	REF	REF	994970-2	COUNTER, MAGNETIC	164				
-	1	1	1	2119955-1	ASSY, LUBRICATOR, SIDE FEED	113				
-	1	1	1	2844908-1	SCREW, LOCKING	99				
-	1	1	1	2844907-1	POST, LOCKING	98				
-	1	1	1	1-690438-0	FRONT STRIP GUIDE	96				
-	2	2	2	2168083-1	SCR, SKT HD CAP, RoHS, M3 X 8.0	95				
-	1	1	1	455888-4	SPACER, CRIMPER	82				
-	1	1	1	1803607-3	DOCUMENTATION PACKAGE	71				
-	1	1	1	2119791-9	DEPRESSOR, WIRE	70				
-	1	1	1	2119740-1	TAG, IDENTIFICATION	67				
-	2	2	2	2168078-1	SCREW, DRIVE, RH, RoHS, 2 x .188	66				
-	1	1	1	2-18032-5	SCR, SET, FLT PNT, M5 X 20.0	64				
-	1	1	1	2-1722335-1	THREAD BOLT GEWINDEBOLZEN	61				
-	1	1	1	2168083-2	SCR, SKT HD CAP, RoHS, M4 X 8.0	60				
-	1	1	1	5-18022-5	SCR, HEX HD CAP, M4 X 6.0	59				
-	1	1	1	1338685-1	PAWL, FEED	56				
-	4	4	4	2168083-3	SCR, SKT HD CAP, RoHS, M4 X 12.0	54				
-	2	2	2	2-2168083-5	SCR, SKT HD CAP, RoHS, M4 X 14	53				
-	1	1	1	1803382-6	HOLD DOWN, SPRING LOADED	50				
-	1	-	1	18023-9	SCR, SKT HD CAP M4 X 6.0	49				
-	1	1	1	1803583-9	APPLICATOR BASIC ASSEMBLY, SF	46				
-	1	1	1	1803515-1	RAM ASSEMBLY, SF ATLANTIC	44				
-	1	1	1	1803602-1	SCR, BHSC, RoHS (M8 X 25)	41				
-	1	1	1	1752356-3	SUPPORT, TERMINAL	34				
-	2	2	2	2079383-5	SCR, BHSC, RoHS (M4 X 20)	33				
-	2	2	2	2-2844962-4	SPACER, CYLINDRICAL, STRIP GUIDE	30				
-	1	1	1	2844938-1	PLATE, STRIP GUIDE	29				
-	2	2	2	22283-1	SPRING, COMPRESSION	27				
-	1	1	1	356835-1	LEVER, DRAG RELEASE	26				
-	1	1	1	1803142-1	DRAG, TERMINAL	25				
-	1	1	1	1320928-2	STRIP GUIDE	24				
-	1	1	1	980371-4	SCR, SKT HD SHLDR 5.0 DIA X 6.0	23				
-	1	1	1	2168083-2	SCR, SKT HD CAP, RoHS, M4 X 8.0	21				
-	2	2	2	1-18028-2	WASHER, FLAT, REG M4	20				
-	1	1	1	2119533-1	STRIPPER, SIDE FEED	19				
-	1	1	1	3-22280-3	SPRING, COMPRESSION	12				
-	1	1	1	2-519000-1	SCR, SKT HD CAP M4 X 10.0	11				
-	1	1	1	2119805-1	SHEAR HOLDER, FRONT	10				
-	1	1	1	2-1803095-3	FLOATING SHEAR, FRONT	9				
1	2	1	1	1633689-5	ANVIL, COMBINATION	8				
-	1	1	1	240641-1	SPACER	7				
-	1	1	1	1-2119757-8	DEPRESSOR, SHEAR	5				
-	1	1	1	1-238011-7	BLOCK, CRIMPER SPACER	4				
1	2	1	1	4-1803019-7	CRIMPER, INSULATION O	3				
-	-	-	-	-	-	2				
1	2	1	1	1803697-2	CRIMPER, WIRE PREMIUM, STEPPED	1				
-	77	-	72	-	32	-	2	PART NO	DESCRIPTION	ITEM NO

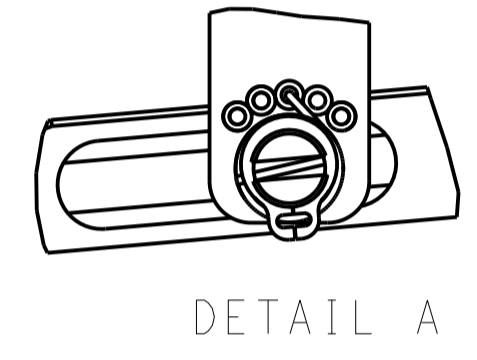
DIMENSIONS:		TOLERANCES UNLESS OTHERWISE SPECIFIED:		MATERIAL:		FINISH:		WEIGHT:		SCALE:	
mm	0 PLC ±	1 PLC ±	2 PLC ±	3 PLC ±	4 PLC ±	ANGLES	FINISH				
APPLICATOR DATA		APPLICATOR DATA		APPLICATOR DATA		APPLICATOR DATA		APPLICATOR DATA		APPLICATOR DATA	
APPLICATOR DATA		APPLICATOR DATA		APPLICATOR DATA		APPLICATOR DATA		APPLICATOR DATA		APPLICATOR DATA	
APPLICATOR DATA		APPLICATOR DATA		APPLICATOR DATA		APPLICATOR DATA		APPLICATOR DATA		APPLICATOR DATA	

LOC		DIST		REVISIONS			
A	66	P	LTM	DESCRIPTION	DATE	OWN	APVD
		-		SEE SHEET 1			

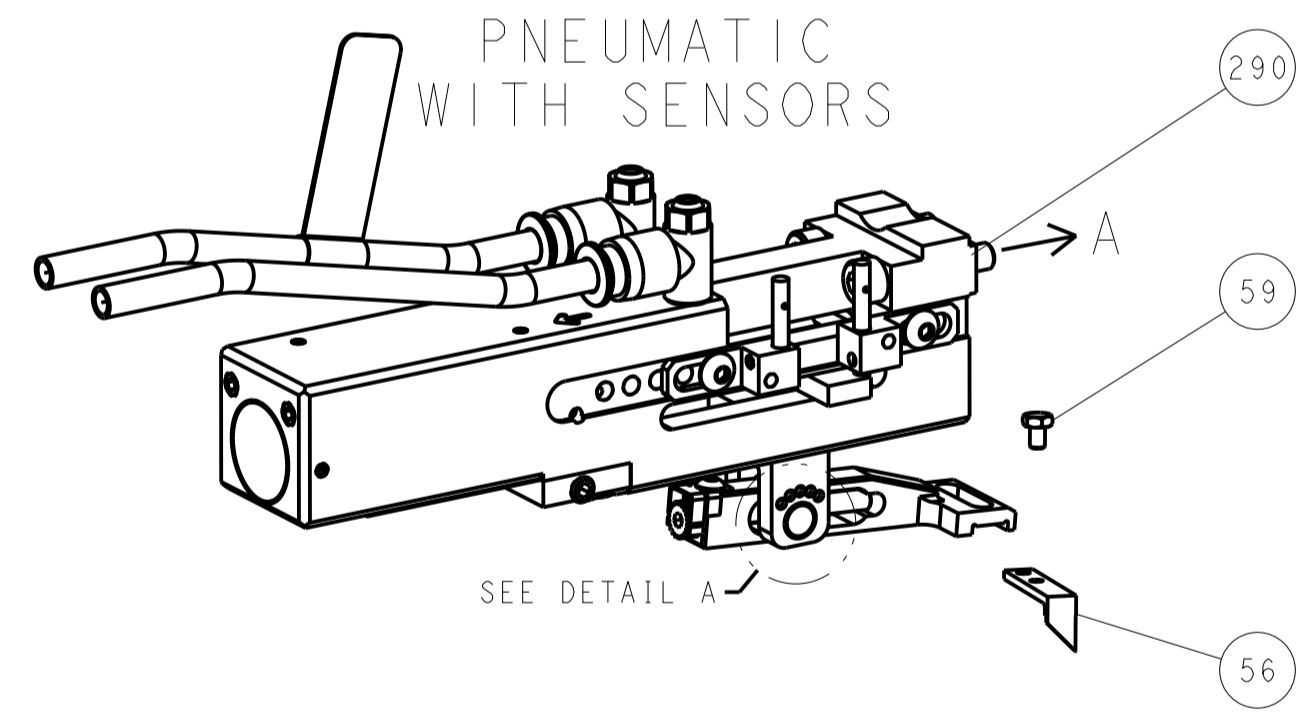
### FEED TYPE PNEUMATIC



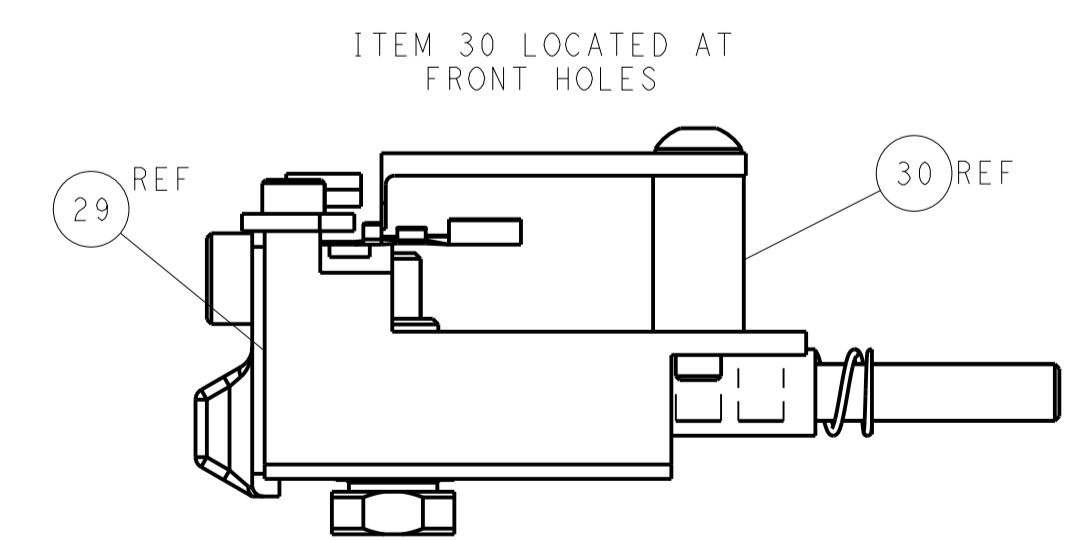
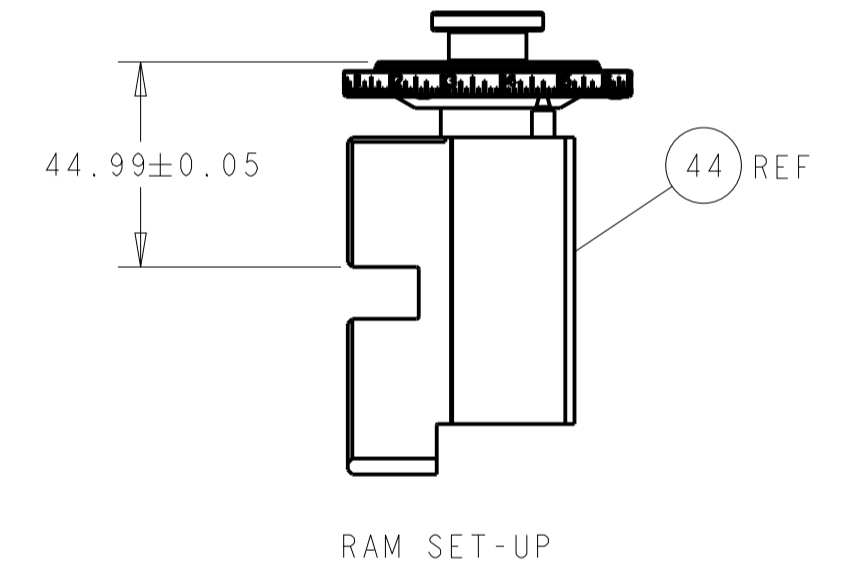
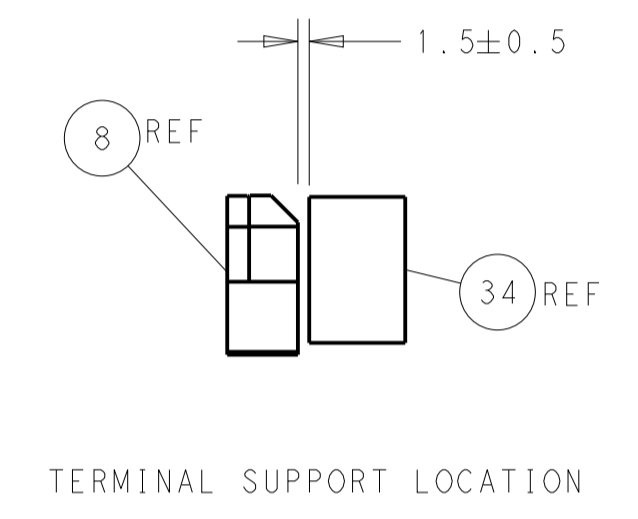
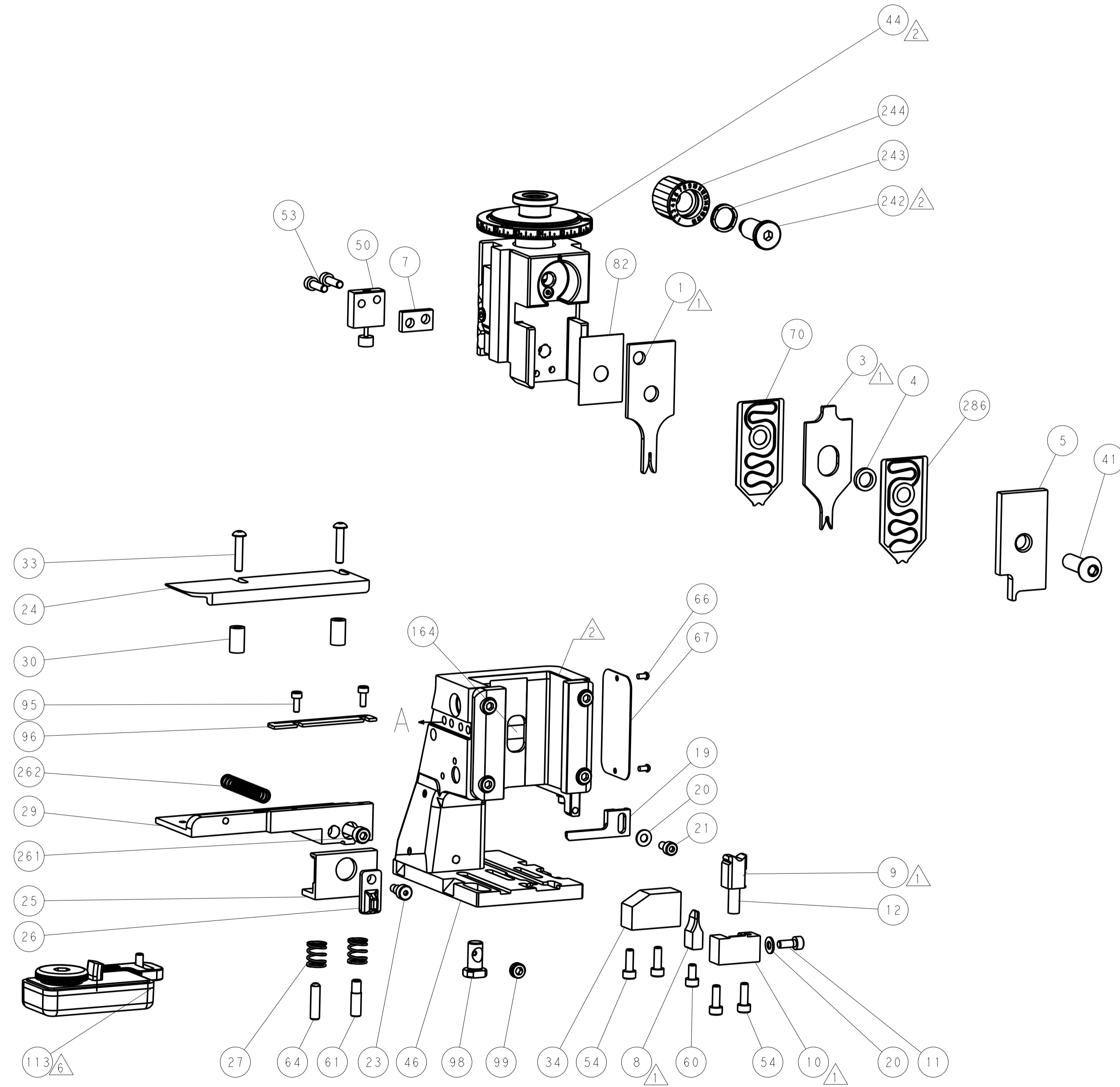
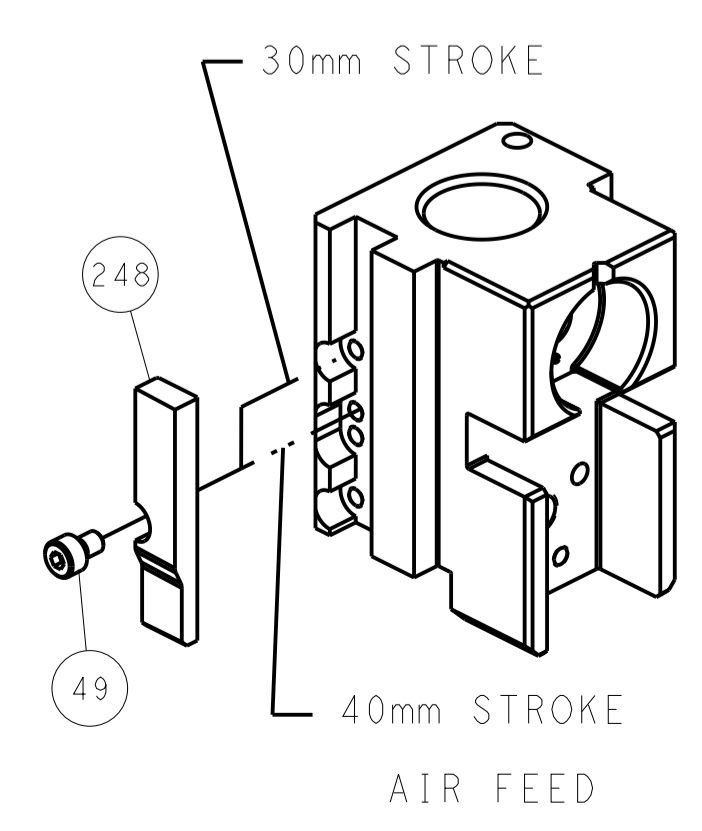
### FEED SPRING SETTING POSITION (SHOWN FROM REAR SIDE)



### DOUBLE ACTING PNEUMATIC WITH SENSORS



### CAM POSITION

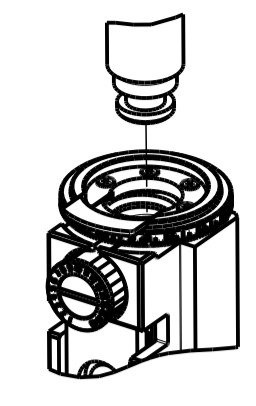


**ATLANTIC VERSION**  
 Shown on sheets 1 of 4 & 2 of 4  
 (Pacific version shown on sheets 3 of 4 & 4 of 4)

DIMENSIONS:		TOLERANCES UNLESS OTHERWISE SPECIFIED:		DWN C. CHEN 05MAY2011		TE Connectivity Harrisburg, PA 17105-3608	
mm	0 PLC ±	1 PLC ±	2 PLC ±	3 PLC ±	4 PLC ±	NAME Ocean Side Feed Applicator	
ANGLES	FINISH			APVD I. CRUZ 05MAY2011	PRODUCT SPEC		
MATERIAL	MATERIAL			APPLICATION SPEC		SIZE CAGE CODE DRAWING NO A1 00779 ©=2151332	
Customer Accessible Production Drawing				SCALE 1:2	SHEET 2 OF 4	REV 71	

PART NUMBER	REVISION	DESCRIPTION	FEED TYPE
2-2151332-2	Z	FINE CRIMP HEIGHT ADJUST	PNEUMATIC
4-2151332-2	Z	FINE CRIMP HEIGHT ADJUST	DOUBLE ACTING PNEUMATIC WITH SENSORS
7-2151332-7	Y	CRIMP TOOLING KIT	-

PACIFIC VERSION TERMINATOR INTERFACE ADAPTER



APPLICATOR DATA		
CRIMP	SIZE	TYPE
WIRE	0.89 mm [.035]	F
INSUL	1.07 mm [.042]	O
APPLICATOR INSTRUCTIONS 408-35042		

TERMINAL DATA: TE TERMINAL		TE CRIMP SPECIFICATION	
TERMINAL NAME: NANO MQS TERMINAL			
WIRE STRIP LENGTH		INSULATION DIAMETER RANGE	
3.25-3.55 mm [.128-.140 IN]		Ø0.85-1.10 mm [.033-.043 IN]	
TERMINAL APPLICATION SPECIFICATION	114-18858		
TERMINALS APPLIED			
TE TERMINAL	TE TERMINAL	TE TERMINAL	TE TERMINAL
1-1703930-1	1-1703930-2		

WIRE SIZE	CRIMP HEIGHT mm [INCH]	CRIMP HEIGHT REFERENCE SETTING
0.17mm2	0.63+/-0.02 [.0248+/- .0008]	6.5
0.13mm2	0.59+/-0.02 [.0232+/- .0008]	7.0



- RECOMMENDED SPARE PARTS
  - REFER TO SUPPLIED INSTRUCTION SHEET FOR CLEANING, LUBRICATION AND STORAGE OF APPLICATOR.
  - APPLY PART NUMBER 2-23419-6 LOCTITE TO THREADS OF ITEM 242.
  - CRIMP HEIGHT REFERENCE SETTING WAS THE SETTING USED WHEN THE APPLICATOR WAS QUALIFIED AT THE FACTORY. ADJUSTMENT MAY BE NECESSARY WHEN RUNNING APPLICATOR IN THE FIELD.
  - THIS APPLICATOR IS EQUIPPED WITH THE DOUBLE ACTING FEED WITH SENSORS AND IS APPLICATION SPECIFIC AND DOES NOT REQUIRE ITEMS 49 & 248.
  - TERMINAL LUBRICANT IS RECOMMENDED.
7. UNLESS SPECIFIED OTHERWISE TORQUE VALUES SHALL BE USED PER DOCUMENT, 101-35000.

**\*WARNING**  
ON INSTALLATION, SET WIRE DISC TO CRIMP HEIGHT REFERENCE SETTING FOR LARGEST WIRE SIZE. CRIMP HEIGHT REFERENCE SETTINGS GREATER THAN THE VALUE SHOWN MAY CAUSE DAMAGE TO THE CRIMP TOOLING. REFER TO THE INSTRUCTION SHEET FOR PROPER SETUP AND ADJUSTMENTS

ENTRY LEVEL APPLICATOR		ITEM SUBSTITUTION LIST		
PART NUMBER	SAME AS	ITEM	ITEM DESCRIPTION	SUBSTITUTE PART NUMBER
8-2151332-2	2151332-2	1	WIRE CRIMPER	2370388-2
9-2151332-2	2-2151332-2	3	INSULATION CRIMPER	4-1803627-7
		46	BASIC SUB -ASSEMBLY	1803940-9
		141	BASIC SUB -ASSEMBLY	1-1803940-0
			LUBRICATOR	DELETE

**PACIFIC VERSION**  
Shown on sheets 3 of 4 & 4 of 4  
(Atlantic version shown on sheets 1 of 4 & 2 of 4)

LOC	DIST	REV	LTN	DESCRIPTION	DATE	OWN	APVD
A	66	-	-	SEE SHEET 1	-	-	-

-	1	-	2844950-1	AIR FEED MODULE	290
-	1	1	2119791-9	DEPRESSOR, WIRE	286
-	1	1	1-22281-8	SPRING, COMPRESSION	262
-	1	1	2168083-6	SCR, SKT HD CAP, RoHS, M5 X 65	261
-	1	1	2119082-5	CAM, SNAIL, INSULATION ADJUSTMENT	244
-	1	1	2079764-1	WASHER, WAVE SPRING, CREST-TO-CREST	243
	1	1	2119083-1	RETAINER, INSULATION DIAL	242
-	-	1	2844940-1	AIR FEED MODULE	238
-	REF	REF	994970-2	COUNTER, MAGNETIC	164
-	-	1	2119641-2	FEED CAM, AIR FEED	151
-	1	1	2168083-8	SCR, SKT HD CAP, RoHS, M4 X 16	144
-	4	4	2168083-9	SCR, SKT HD CAP, RoHS, M4 X 20	143
-	1	1	1-1803583-0	APPLICATOR BASIC ASSEMBLY, SF	141
-	1	1	1803516-1	RAM ASSEMBLY, SF PACIFIC	140
	1	1	2119955-1	ASSY, LUBRICATOR, SIDE FEED	113
-	1	1	2844908-1	SCREW, LOCKING	99
-	1	1	2844907-1	POST, LOCKING	98
-	1	1	1-690438-0	FRONT STRIP GUIDE	96
-	2	2	2168083-1	SCR, SKT HD CAP, RoHS, M3 X 8.0	95
-	1	1	455888-4	SPACER, CRIMPER	82
-	1	1	1803607-3	DOCUMENTATION PACKAGE	71
-	1	1	2119791-9	DEPRESSOR, WIRE	70
-	1	1	2119740-1	TAG, IDENTIFICATION	67
-	2	2	2168078-1	SCREW, DRIVE, RH, RoHS, 2 x .188	66
-	1	1	2-18032-5	SCR, SET, FLT PNT, M5 X 20.0	64
-	1	1	2-1722335-1	THREAD BOLT GEWINDEBOLZEN	61
-	1	1	5-18022-5	SCR, HEX HD CAP, M4 X 6.0	59
-	1	1	1338685-1	PAWL, FEED	56
-	2	2	2-2168083-5	SCR, SKT HD CAP, RoHS, M4 X 14	53
-	1	1	1803382-6	HOLD DOWN, SPRING LOADED	50
-	-	1	18023-9	SCR, SKT HD CAP M4 X 6.0	49
-	1	1	1803602-1	SCR, BHSC, RoHS (M8 X 25)	41
-	1	1	1752356-3	SUPPORT, TERMINAL	34
-	2	2	2079383-5	SCR, BHSC, RoHS (M4 X 20)	33
-	2	2	2-2844962-4	SPACER, CYLINDRICAL, STRIP GUIDE	30
-	1	1	2844938-1	PLATE, STRIP GUIDE	29
-	2	2	22283-1	SPRING, COMPRESSION	27
-	1	1	356835-1	LEVER, DRAG RELEASE	26
-	1	1	1803142-1	DRAG, TERMINAL	25
-	1	1	1320928-2	STRIP GUIDE	24
-	1	1	980371-4	SCR, SKT HD SHLDR 5.0 DIA X 6.0	23
-	1	1	2168083-2	SCR, SKT HD CAP, RoHS, M4 X 8.0	21
-	2	2	1-18028-2	WASHER, FLAT, REG M4	20
-	1	1	2119533-1	STRIPPER, SIDE FEED	19
-	1	1	3-22280-3	SPRING, COMPRESSION	12
-	1	1	2-519000-1	SCR, SKT HD CAP M4 X 10.0	11
	1	1	2119805-1	SHEAR HOLDER, FRONT	10
	1	1	2-1803095-3	FLOATING SHEAR, FRONT	9
	1	1	1633689-5	ANVIL, COMBINATION	8
-	1	1	240641-1	SPACER	7
-	1	1	1-2119757-8	DEPRESSOR, SHEAR	5
-	1	1	1-238011-7	BLOCK, CRIMPER SPACER	4
	1	1	4-1803019-7	CRIMPER, INSULATION O	3
-	-	-	-	-	2
	1	1	1803697-2	CRIMPER, WIRE PREMIUM, STEPPED	1

DIMENSIONS:		TOLERANCES UNLESS OTHERWISE SPECIFIED:		DWG		REV		DATE	
mm	0 PLC ±	1 PLC ±	2 PLC ±	3 PLC ±	4 PLC ±	5 PLC ±	6 PLC ±	7 PLC ±	8 PLC ±
MATERIAL		FINISH		WEIGHT		SCALE		SHEET	
						1:2		3 OF 4	

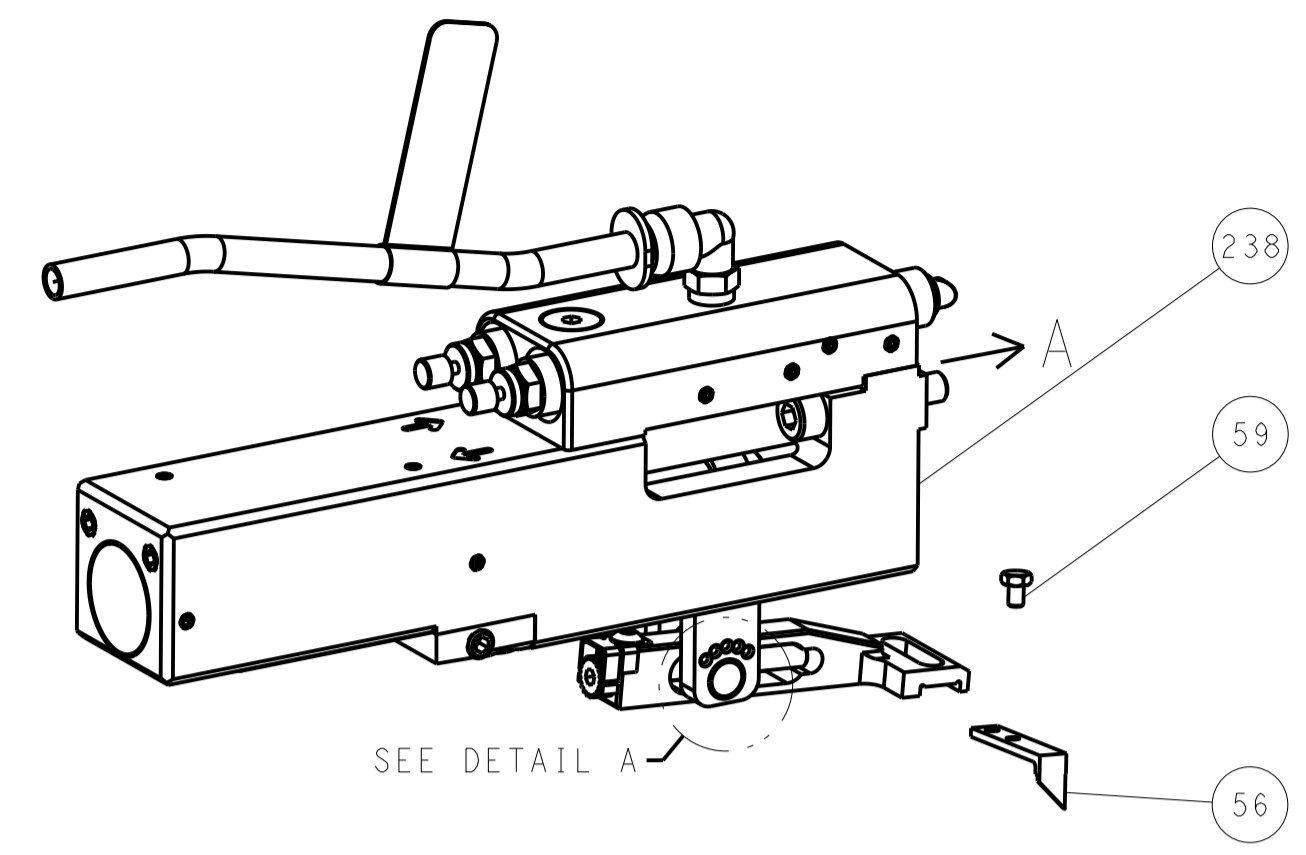
LOC	DIST	REV	LTN	DESCRIPTION	DATE	OWN	APVD
A	66	-	-	SEE SHEET 1	-	-	-

ITEM NO	PART NO	DESCRIPTION
-77	-42	-22

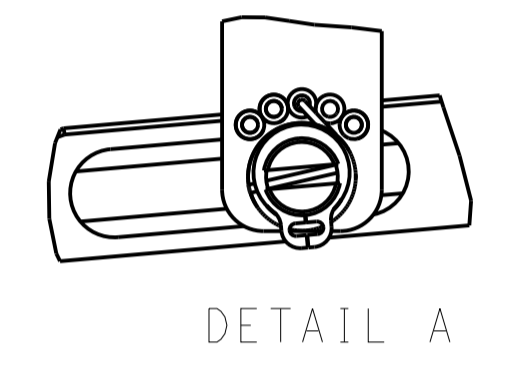
NAME	TE Connectivity		
ADDRESS	Harrisburg, PA 17105-3608		
PRODUCT SPEC	Ocean Side Feed Applicator		
APPLICATION SPEC			
SIZE	CAGE CODE	DRAWING NO	RESTRICTED TO
A1	00779	2151332	
Customer Accessible Production Drawing			

LOC		DIST		REVISIONS			
A	66	P	LTM	DESCRIPTION	DATE	DWN	APVD
		-		SEE SHEET 1			

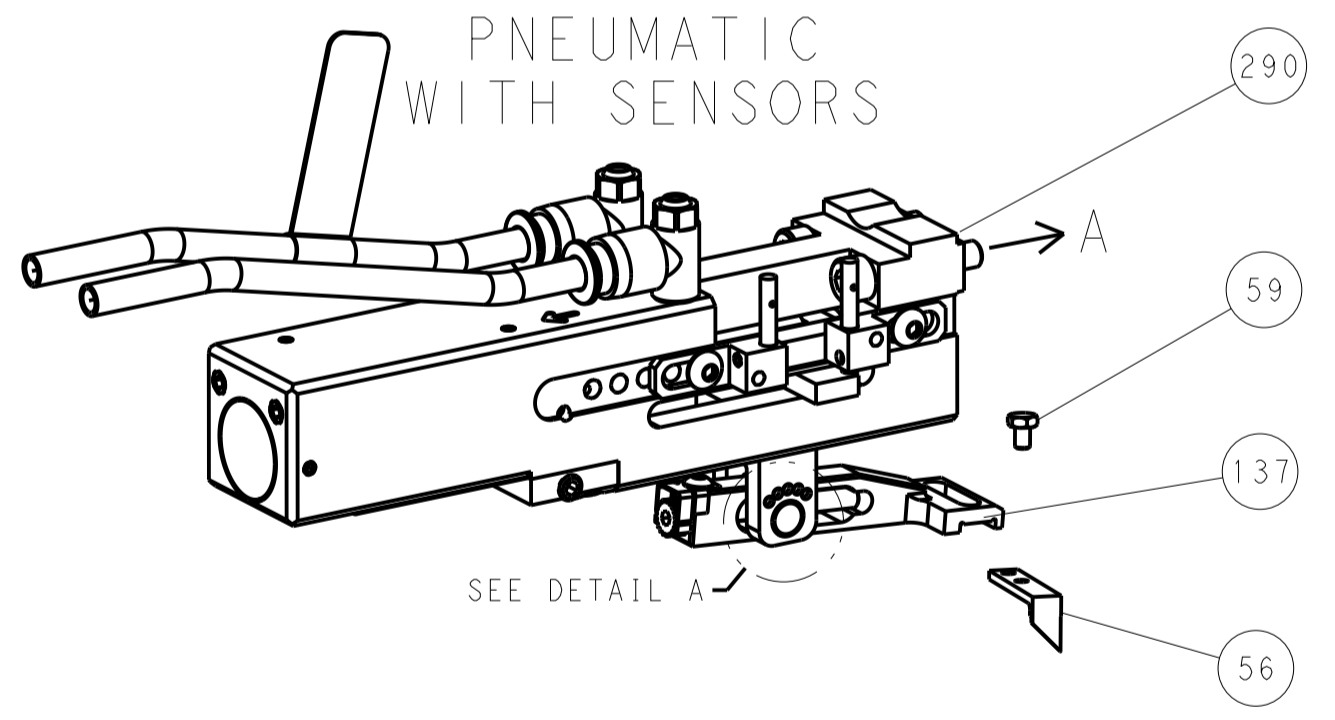
### FEED TYPE PNEUMATIC



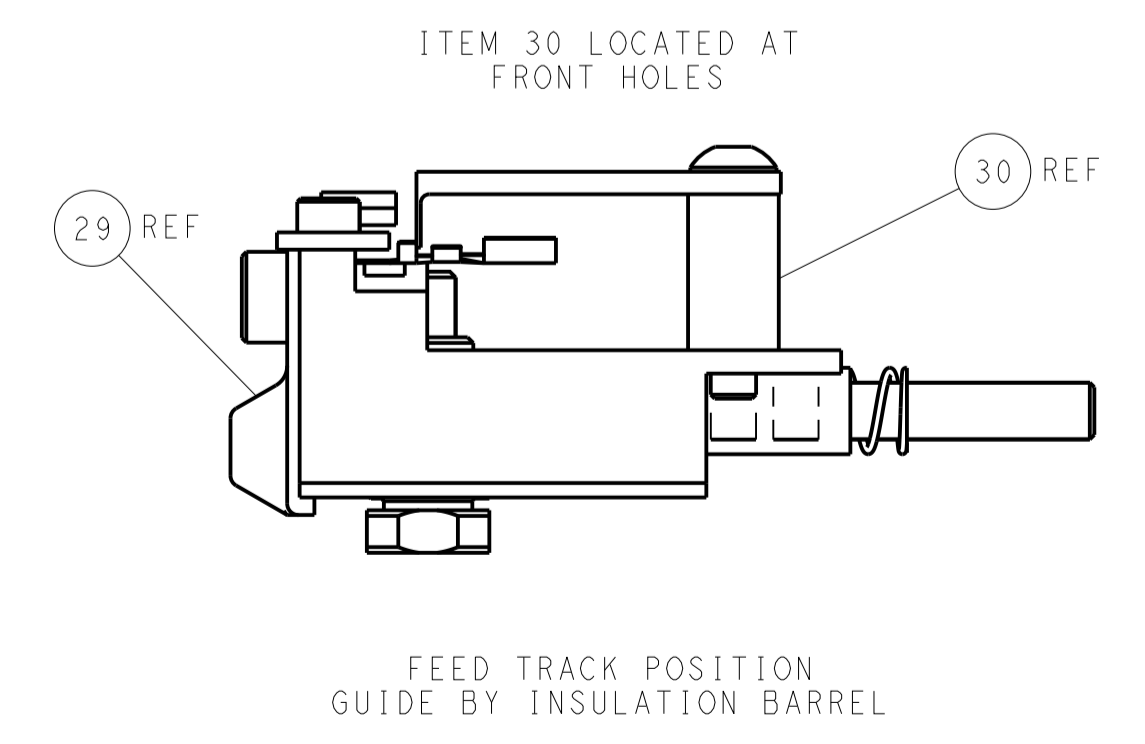
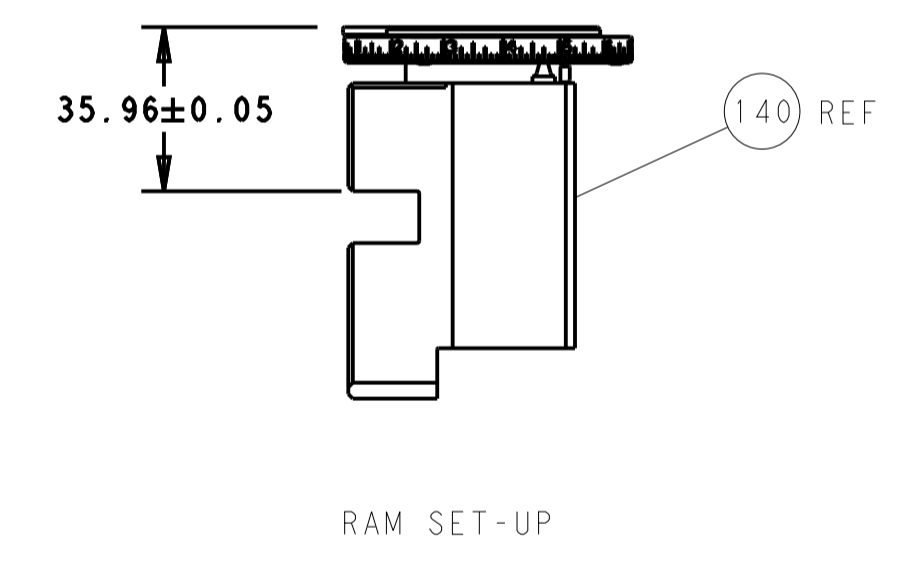
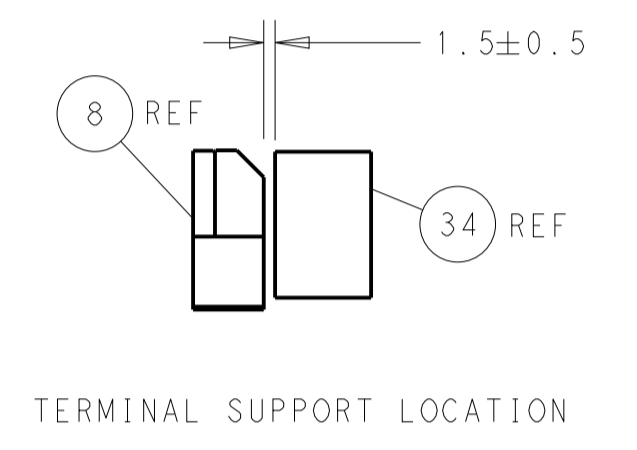
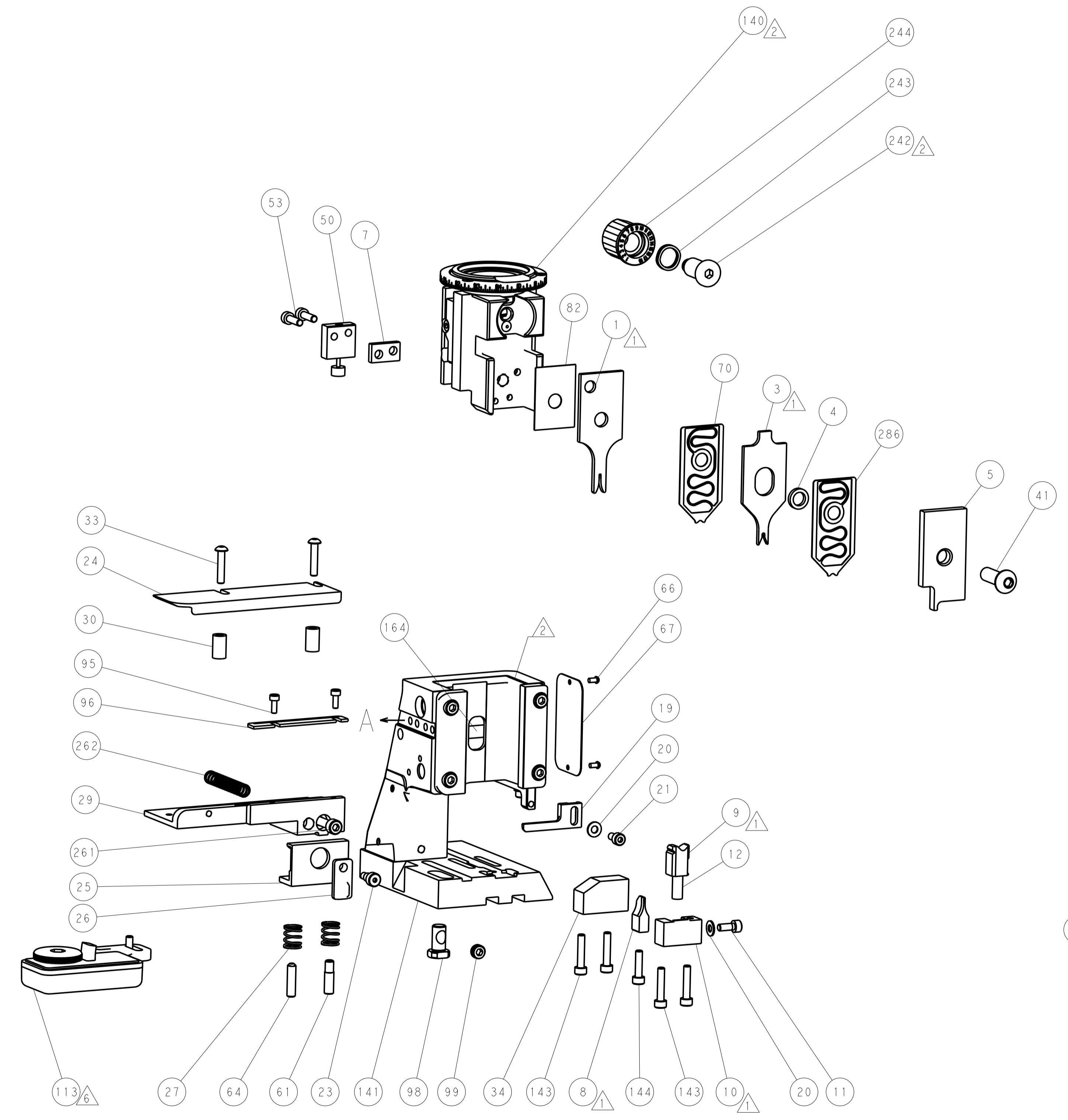
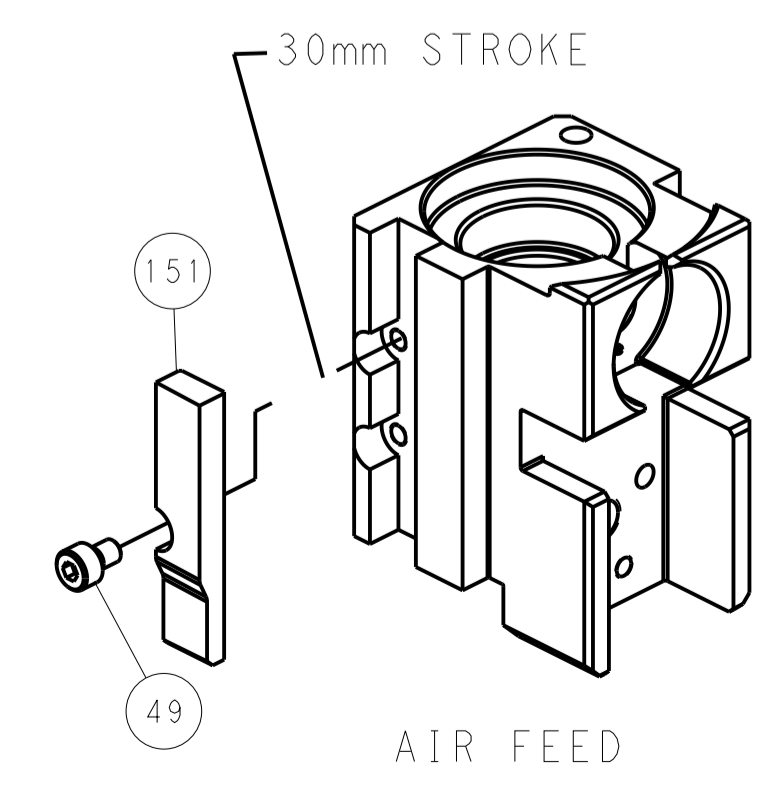
### FEED SPRING SETTING POSITION (SHOWN FROM REAR SIDE)



### DOUBLE ACTING PNEUMATIC WITH SENSORS



### CAM POSITION



**PACIFIC VERSION**  
 Shown on sheets 3 of 4 & 4 of 4  
 (Atlantic version shown on sheets 1 of 4 & 2 of 4)

DIMENSIONS:		TOLERANCES UNLESS OTHERWISE SPECIFIED:		DWN C. CHEN 05MAY2011		TE Connectivity Harrisburg, PA 17105-3608	
mm	0 PLC ±	1 PLC ±	2 PLC ±	3 PLC ±	4 PLC ±	NAME Ocean Side Feed Applicator	
MATERIAL		FINISH		APVD I. CRUZ 05MAY2011		RESTRICTED TO	
				PRODUCT SPEC		SIZE CAGE CODE DRAWING NO	
				APPLICATION SPEC		A1 00779 C=2151332	
				WEIGHT		SCALE 1:2 SHEET 4 OF 4 REV 1	
				Customer Accessible Production Drawing			

# Mouser Electronics

Authorized Distributor

Click to View Pricing, Inventory, Delivery & Lifecycle Information:

[TE Connectivity:](#)

[2-2151332-2](#)