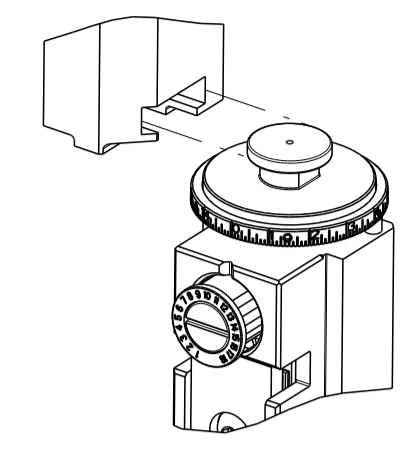


PART NUMBER	REVISION	DESCRIPTION	FEED TYPE
2151059-1	S	FINE CRIMP HEIGHT ADJUST	MECHANICAL
2151059-2	S	FINE CRIMP HEIGHT ADJUST	PNEUMATIC
7-2151059-1	S	MECHANICAL AND CRIMP TOOLING KIT	MECHANICAL
7-2151059-2	S	PNEUMATIC AND CRIMP TOOLING KIT	PNEUMATIC
7-2151059-7	A	CRIMP TOOLING KIT	-

ATLANTIC VERSION TERMINATOR INTERFACE ADAPTER



APPLICATOR DATA

CRIMP	SIZE	TYPE
WIRE	2.79 mm [.110]	F
INSUL	3.56 mm [.140]	OV

APPLICATOR INSTRUCTIONS 408-35042

TERMINAL DATA: TE TERMINAL TE CRIMP SPECIFICATION

TERMINAL NAME: STANDARD POWER TIMER

WIRE STRIP LENGTH	INSULATION DIAMETER RANGE
4.00-4.60 mm [.157-.181 IN]	Ø2.20-3.00 mm [.087-.118 IN]

TERMINAL APPLICATION SPECIFICATION (A)114-18037 (B)114-18388

TERMINALS APPLIED 5

TE TERMINAL	TE TERMINAL	TE TERMINAL	TE TERMINAL
(A) 964326-1	(A) 964326-5	(A) 8-964326-1	(B) 1241404-1
(B) 1241404-3	(B) 1-2208460-1	(B) 1-2208460-3	

TERMINAL DATA: TE TERMINAL TE CRIMP SPECIFICATION

TERMINAL NAME: AMP MCP 6.3/4.8K FLATCONTACT

WIRE STRIP LENGTH	INSULATION DIAMETER RANGE
4.00-4.60 mm [.157-.181 IN]	Ø2.20-3.00 mm [.087-.118 IN]

TERMINAL APPLICATION SPECIFICATION 114-18037

TERMINALS APPLIED 5

TE TERMINAL	TE TERMINAL	TE TERMINAL	TE TERMINAL
927837-1	927837-2	927837-3	927837-4
927837-5	1-927837-5	964203-1	964203-2
964203-3	964203-4	964203-5	

TERMINAL DATA: TE TERMINAL TE CRIMP SPECIFICATION

TERMINAL NAME: STANDARD POWER TIMER

WIRE STRIP LENGTH	INSULATION DIAMETER RANGE
4.00-4.60 mm [.157-.181 IN]	Ø2.20-3.00 mm [.087-.118 IN]

TERMINAL APPLICATION SPECIFICATION 6

TERMINALS APPLIED 5

TE TERMINAL	TE TERMINAL	TE TERMINAL	TE TERMINAL
1241404-1	-	-	-

WIRE SIZE	CRIMP HEIGHT mm [INCH]	CRIMP HEIGHT REFERENCE SETTING
2.50mm2	1.89+/-0.05 [.074+/- .002]	6.8
1.50mm2	1.64+/-0.05 [.065+/- .002]	9.9

WIRE SIZE	CRIMP HEIGHT mm [INCH]	CRIMP HEIGHT REFERENCE SETTING
2.50mm2	2.04+/-0.05 [.080+/- .002]	4.8
2.25mm2	1.97+/-0.05 [.078+/- .002]	5.5
2.00mm2	1.90+/-0.05 [.075+/- .002]	6.2
1.50mm2	1.76+/-0.05 [.069+/- .002]	7.6
16 AWG	1.70+/-0.05 [.067+/- .002]	8.0

WIRE SIZE	CRIMP HEIGHT mm [INCH]	CRIMP HEIGHT REFERENCE SETTING
1.50mm2+1.00mm2	2.04+/-0.05 [.080+/- .002]	6.8
2.00mm2	1.90+/-0.05 [.075+/- .002]	8.2

- 1 RECOMMENDED SPARE PARTS
 - 2 REFER TO SUPPLIED INSTRUCTION SHEET FOR CLEANING, LUBRICATION & STORAGE OF APPLICATOR.
 - 3 APPLY PART NUMBER 2-23419-6 LOCTITE TO THREADS OF ITEMS 242.
 - 4 CRIMP HEIGHT REFERENCE SETTING WAS THE SETTING USED WHEN THE APPLICATOR WAS QUALIFIED AT THE FACTORY. ADJUSTMENT MAY BE NECESSARY WHEN RUNNING APPLICATOR IN THE FIELD.
 - 5 TERMINAL LUBRICANT IS RECOMMENDED.
 - 6 THIS CRIMP PARAMETER IS PROVIDED TO MEET A CUSTOM AND UNIQUE CUSTOMER REQUIREMENT. IT HAS BEEN EVALUATED AND IS CONDITIONALLY SPECIFIED BY TE CONNECTIVITY. THIS CUSTOMIZED CRIMP PARAMETER IS NOT LISTED AS AN APPROVED APPLICATION WITHIN A TE CONNECTIVITY APPLICATION SPECIFICATION; HOWEVER, IT HAS BEEN VALIDATED ACCORDING TO TE CONNECTIVITY SPECIFICATIONS 109-18079 (TEST GROUP 1) AND 114-18022. **TE CONNECTIVITY EXPRESSLY DISCLAIMS ANY AND ALL WARRANTIES THAT THE PRODUCT WILL PERFORM SIMILARLY TO VALIDATED AND APPROVED APPLICATIONS, AS STATED WITHIN TE CONNECTIVITY APPLICATION SPECIFICATIONS, INCLUDING BUT NOT LIMITED TO IMPLIED WARRANTIES OF MERCHANTABILITY OR FITNESS FOR PARTICULAR PURPOSE.** AS SUCH, IT IS HIGHLY RECOMMENDED THAT THE CUSTOMER PERFORM FURTHER DETAILED EVALUATION TO ASSESS PRODUCT PERFORMANCE IN THE SPECIFIC APPLICATION.
7. UNLESS SPECIFIED OTHERWISE, TORQUE VALUES SHALL BE USED PER DOCUMENT, 101-35000.

***WARNING**
 ON INSTALLATION, SET WIRE DISC TO CRIMP HEIGHT REFERENCE SETTING. FOR LARGEST WIRE SIZE. CRIMP HEIGHT REFERENCE SETTINGS GREATER THAN THE VALUE SHOWN MAY CAUSE DAMAGE TO THE CRIMP TOOLING. REFER TO THE INSTRUCTION SHEET FOR PROPER SETUP AND ADJUSTMENTS.

LOC	DIST	REV	DATE	BY	CHK
A	66	P	21FEB2020	JAH	RK
		R	14APR2020	MZ	YY
		R1	18JAN2021	FJ	YY
		S	28JUN2021	MEH	TE

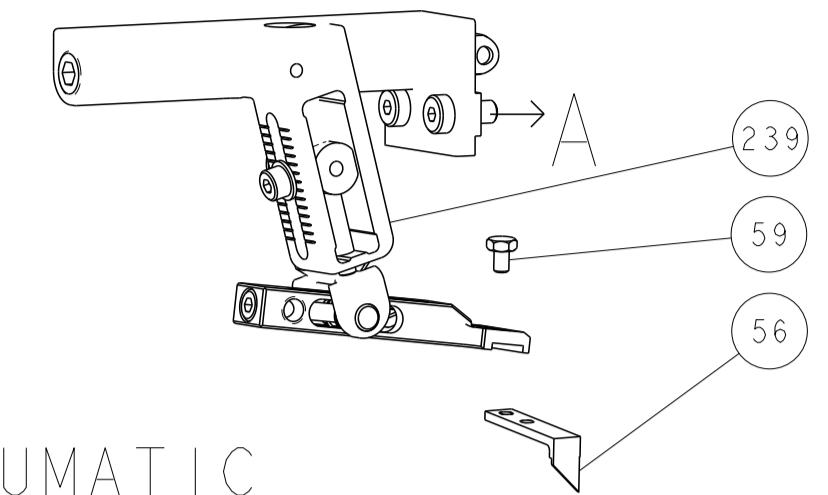
REV	DATE	BY	CHK	DESCRIPTION	ITEM NO			
-	1	-	1	2119641-1	FEED CAM, AIR FEED	248		
-	1	1	1	2119082-4	CAM, SNAIL, INSULATION ADJUSTMENT	244		
-	1	1	1	2079764-1	WASHER, WAVE SPRING, CREST-TO-CREST	243		
-	1	1	1	2119083-1	RETAINER, INSULATION DIAL	242		
-	1	1	1	18023-1	SCR, SKT HD CAP M3 X 5.0	241		
-	1	1	1	2119580-1	MECHANICAL FEED ASSEMBLY	239		
-	1	-	1	2844940-1	AIR FEED MODULE	238		
-	REF	REF	REF	994970-2	COUNTER, MAGNETIC	164		
-	1	1	1	2119955-1	ASSY, LUBRICATOR, SIDE FEED	113		
-	1	1	1	2844908-1	SCREW, LOCKING	99		
-	1	1	1	2844907-1	POST, LOCKING	98		
-	1	1	1	455888-8	SPACER, CRIMPER	82		
-	1	1	1	1803607-3	DOCUMENTATION PACKAGE	71		
-	1	1	1	2119740-1	TAG IDENTIFICATION	67		
-	2	2	2	2168078-1	SCREW, DRIVE, RH, RoHS, 2 x .188	66		
-	1	1	1	2168083-2	SCR, SKT HD CAP, RoHS, M4 X 8.0	60		
-	1	1	1	5-18022-5	SCR, HEX HD CAP, M4 X 6.0	59		
-	1	1	1	1338685-1	PAWL, FEED	56		
-	4	4	4	2168083-3	SCR, SKT HD CAP, RoHS, M4 X 12.0	54		
-	2	2	2	2168083-3	SCR, SKT HD CAP, RoHS, M4 X 12.0	53		
-	1	1	1	1803382-2	HOLD DOWN, SPRING LOADED	50		
-	1	2	1	18023-9	SCR, SKT HD CAP M4 X 6.0	49		
-	-	1	-	2119652-1	FEED CAM, PRE FEED	48		
-	-	1	-	2119653-1	FEED CAM, POST FEED	47		
-	1	1	1	1803583-9	APPLICATOR BASIC ASSEMBLY, SF	46		
-	1	1	1	1803515-1	RAM ASSEMBLY, SF ATLANTIC	44		
-	1	1	1	1803602-1	SCR, BHSC, RoHS (M8 X 25)	41		
-	1	1	1	1-1752356-2	SUPPORT, TERMINAL	34		
-	2	2	2	2079383-5	SCR, BHSC, RoHS (M4 X 20)	33		
-	2	2	2	3-2844962-0	SPACER, CYLINDRICAL, STRIP GUIDE	30		
-	1	1	1	2844992-2	ASSEMBLY, STRIP GUIDE	29		
-	1	1	1	1-455888-0	SPACER, CRIMPER	28		
-	1	1	1	1320928-2	STRIP GUIDE	24		
-	1	1	1	2168083-2	SCR, SKT HD CAP, RoHS, M4 X 8.0	21		
-	2	2	2	1-18028-2	WASHER, FLAT, REG M4	20		
-	1	1	1	2119533-1	STRIPPER, SIDE FEED	19		
-	1	1	1	2119806-1	INSERT, SHEAR	13		
-	1	1	1	3-22280-3	SPRING, COMPRESSION	12		
-	1	1	1	1-356885-4	STOP, SHEAR	11		
-	1	1	1	2119805-1	SHEAR HOLDER, FRONT	10		
-	1	1	1	1803095-5	FLOATING SHEAR, FRONT	9		
-	1	2	2	1333207-2	ANVIL, COMBINATION .110	8		
-	1	1	1	6-240641-4	SPACER	7		
-	1	1	1	2119757-4	DEPRESSOR, SHEAR	5		
-	1	1	1	2-238011-2	BLOCK, CRIMPER SPACER	4		
-	1	2	2	2119785-2	CRIMPER, INSULATION OVERLAP PREMIUM	3		
-	1	1	1	455888-6	SPACER, CRIMPER	2		
-	1	2	2	456408-3	CRIMPER, WIRE PREMIUM	1		
-	77	-72	-71	-2	-1	PART NO	DESCRIPTION	ITEM NO

ATLANTIC VERSION
 Shown on sheets 1 of 4 & 2 of 4
 (Pacific version shown on sheets 3 of 4 & 4 of 4)

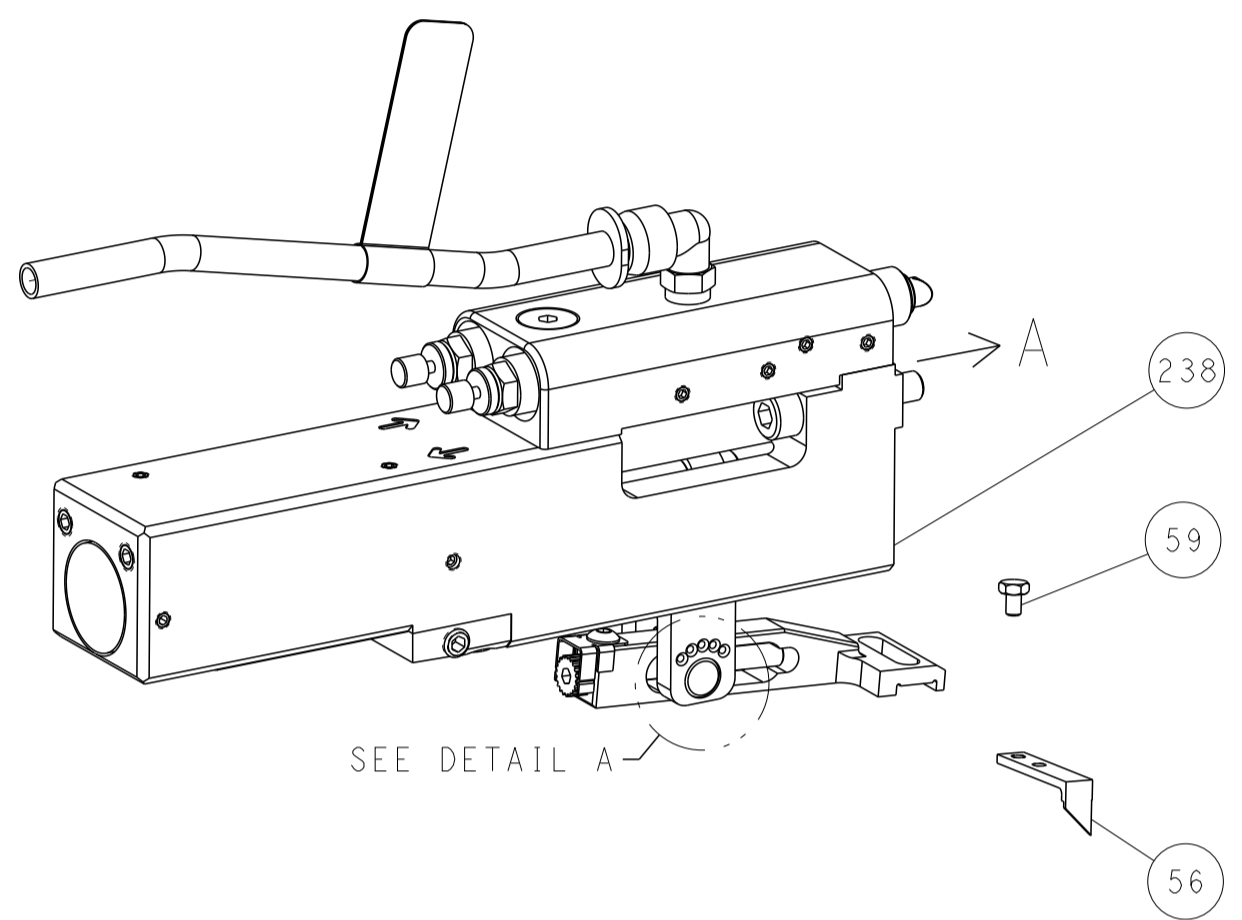
DIMENSIONS:		TOLERANCES UNLESS OTHERWISE SPECIFIED:		DATE: 16SEP2011		CHK: G. BAILEY		NAME: Ocean Side Feed Applicator	
mm	0 PLC ±	1 PLC ±	2 PLC ±	3 PLC ±	4 PLC ±	APVD: S. XI	DATE: 16SEP2011	SIZE: A1	CAGE CODE: 00779
MATERIAL:		FINISH:		WEIGHT:		SCALE: 1:2		SHEET 1 OF 4	
						Customer Accessible Production Drawing		REV S	

LOC		DIST		REVISIONS			
A	66	P	LTN	DESCRIPTION	DATE	OWN	APVD
		-		SEE SHEET 1			

FEED TYPE MECHANICAL



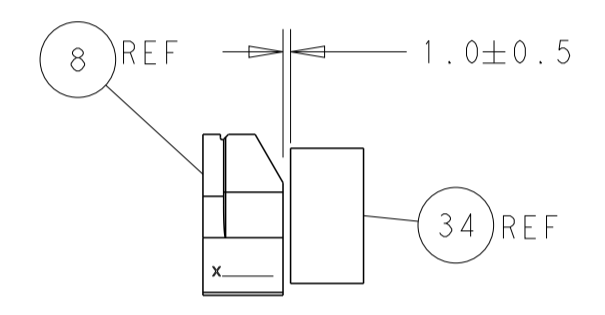
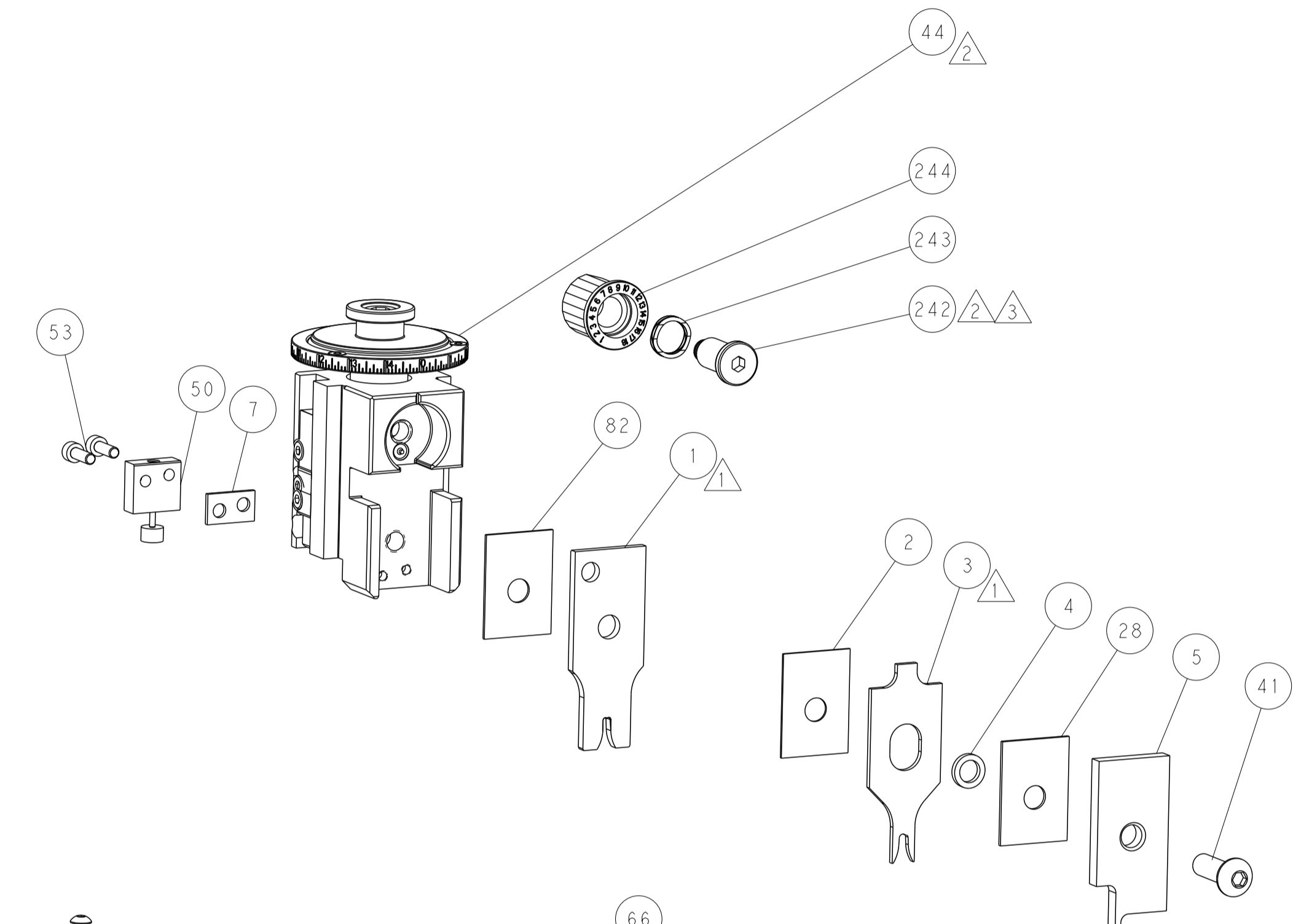
PNEUMATIC



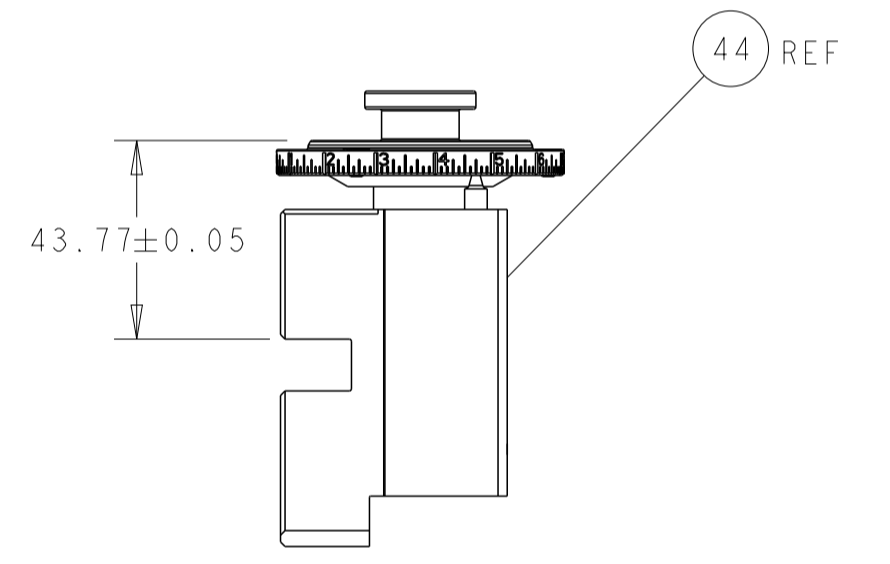
FEED SPRING SETTING POSITION (SHOWN FROM REAR SIDE)



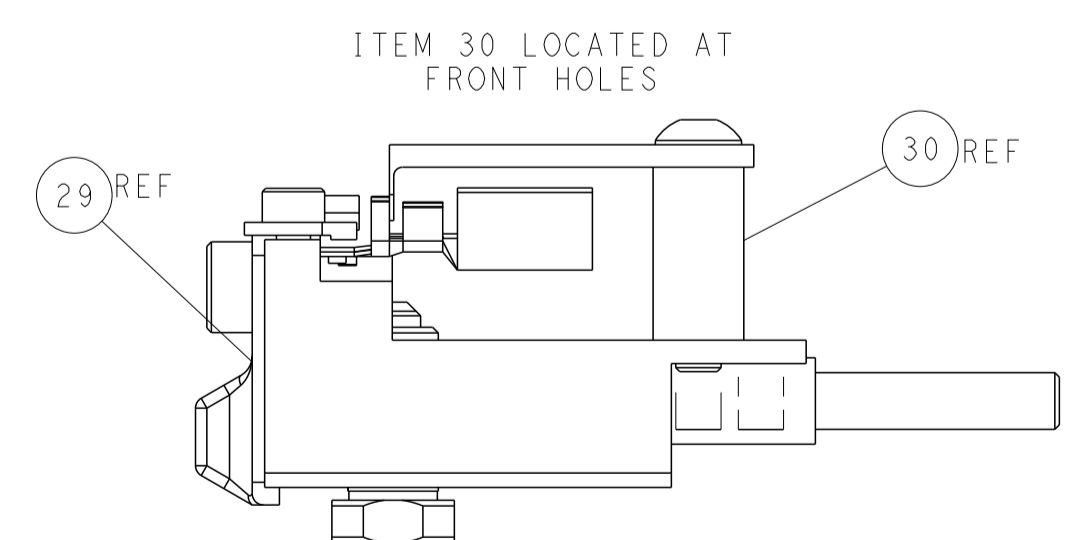
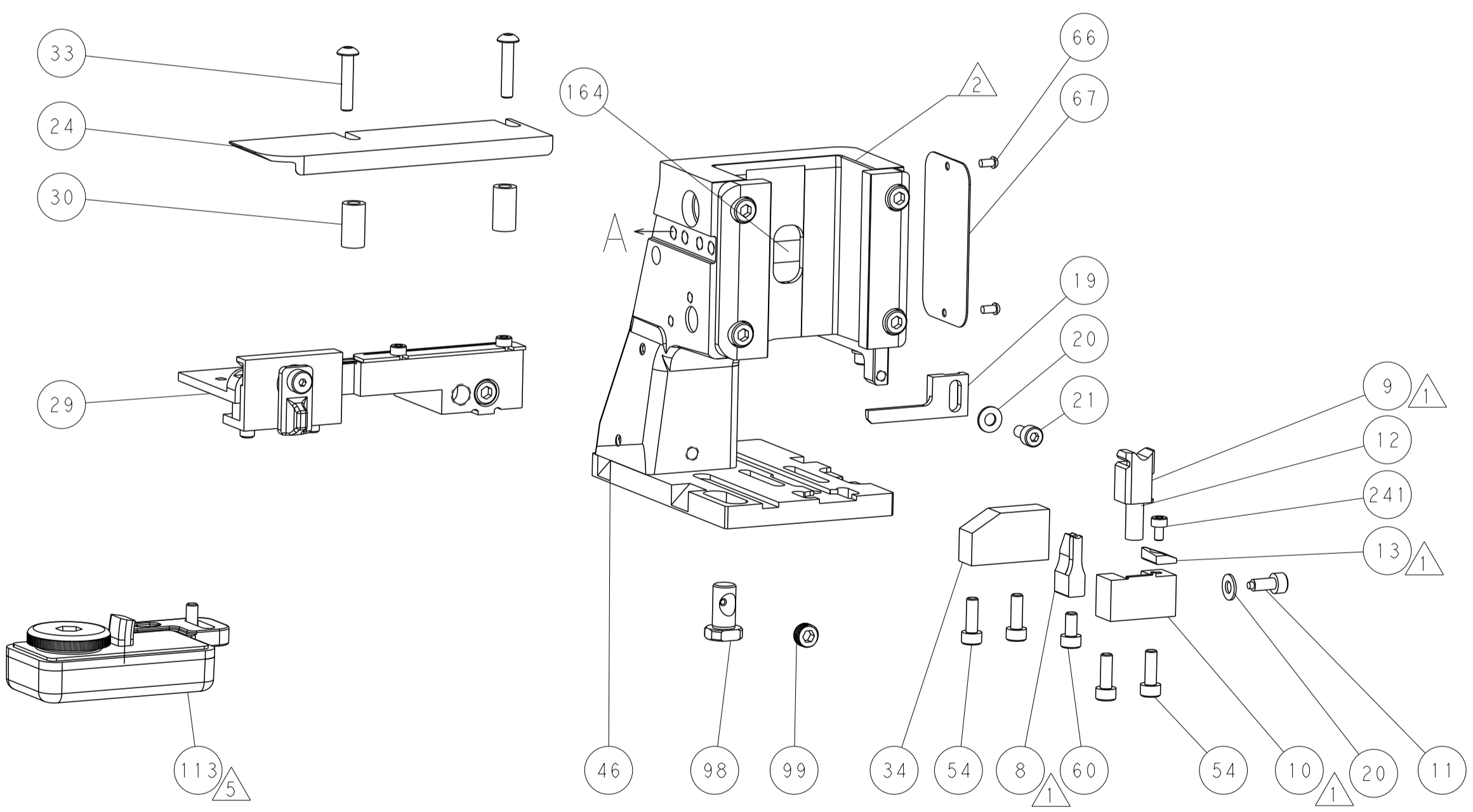
DETAIL A



TERMINAL SUPPORT LOCATION

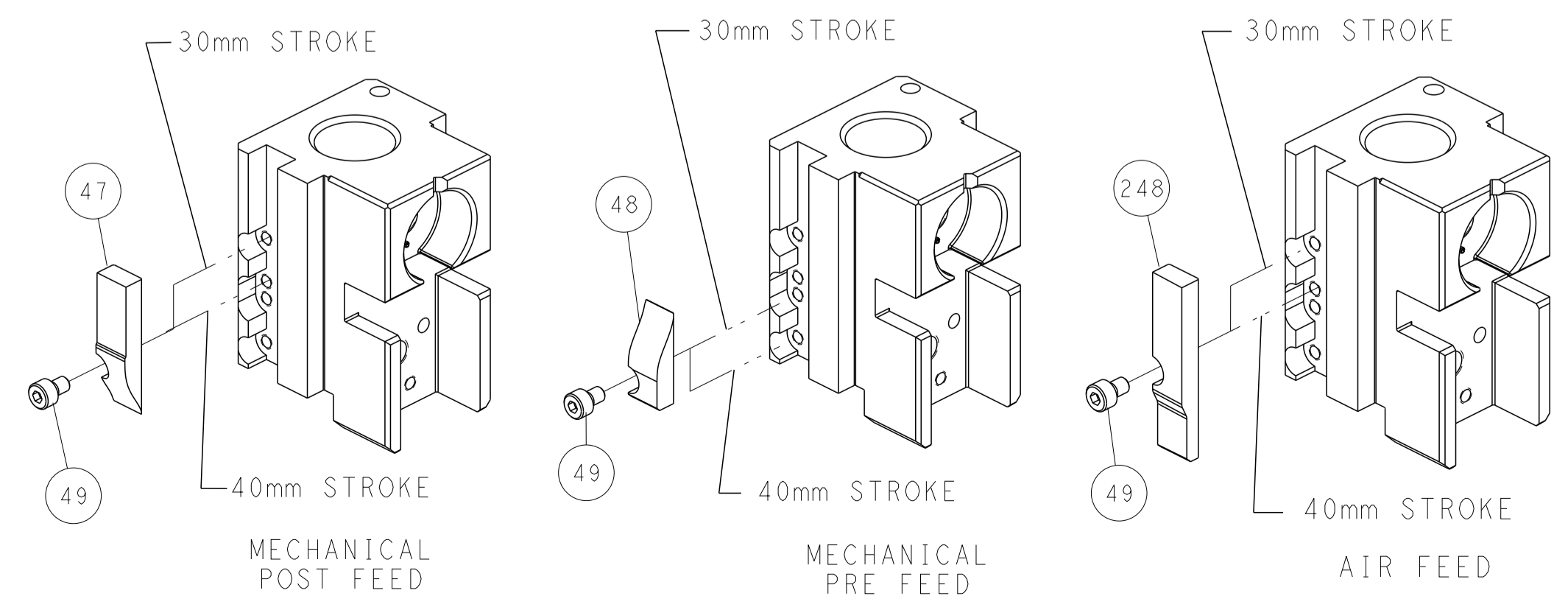


RAM SET-UP



ITEM 30 LOCATED AT FRONT HOLES

CAM POSITIONS

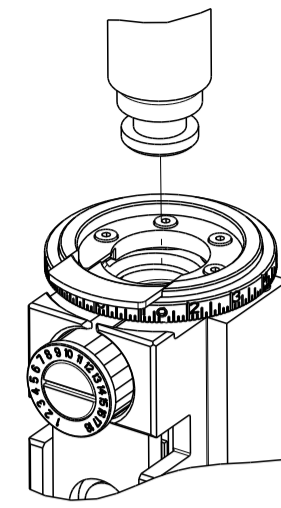


ATLANTIC VERSION
 Shown on sheets 1 of 4 & 2 of 4
 (Pacific version shown on sheets 3 of 4 & 4 of 4)

DIMENSIONS:		TOLERANCES UNLESS OTHERWISE SPECIFIED:		DWN Y. YIN 16SEP2011		TE Connectivity	
mm	0 PLC ±	1 PLC ±	2 PLC ±	3 PLC ±	4 PLC ±	Harrisburg, PA 17105-3608	
MATERIAL:		FINISH:		CHK G. BAILEY 16SEP2011		NAME	
				S. XI 16SEP2011		Ocean Side Feed Applicator	
				APVD		SIZE CAGE CODE DRAWING NO RESTRICTED TO	
				PRODUCT SPEC		A1 00779 ©=2151059	
				APPLICATION SPEC		Customer Accessible Production Drawing	
				WEIGHT		SCALE 1:2 SHEET 2 OF 4 REV S	

PART NUMBER	REVISION	DESCRIPTION	FEED TYPE
2-2151059-1	S	FINE CRIMP HEIGHT ADJUST	MECHANICAL
2-2151059-2	S	FINE CRIMP HEIGHT ADJUST	PNEUMATIC
7-2151059-7	A	CRIMP TOOLING KIT	-

PACIFIC VERSION TERMINATOR
 INTERFACE ADAPTER



APPLICATOR DATA		
CRIMP	SIZE	TYPE
WIRE	2.79 mm [.110]	F
INSUL	3.56 mm [.140]	OV
APPLICATOR INSTRUCTIONS 408-35042		

TERMINAL DATA: TE TERMINAL		TE CRIMP SPECIFICATION	
TERMINAL NAME: STANDARD POWER TIMER			
WIRE STRIP LENGTH		INSULATION DIAMETER RANGE	
4.00-4.60 mm [.157-.181 IN]		Ø2.20-3.00 mm [.087-.118 IN]	
TERMINAL APPLICATION SPECIFICATION	(A)114-18037 (B)114-18388	-	-
TERMINALS APPLIED Δ 5			
TE TERMINAL	TE TERMINAL	TE TERMINAL	TE TERMINAL
(A) 964326-1	(A) 964326-5	(A) 8-964326-1	(B) 1241404-1
(B) 1241404-3	(B) 1-2208460-1	(B) 1-2208460-3	

TERMINAL DATA: TE TERMINAL		TE CRIMP SPECIFICATION	
TERMINAL NAME: AMP MCP 6.3/4.8K FLATCONTACT			
WIRE STRIP LENGTH		INSULATION DIAMETER RANGE	
4.00-4.60 mm [.157-.181 IN]		Ø2.20-3.00 mm [.087-.118 IN]	
TERMINAL APPLICATION SPECIFICATION	114-18037	-	-
TERMINALS APPLIED Δ 5			
TE TERMINAL	TE TERMINAL	TE TERMINAL	TE TERMINAL
927837-1	927837-2	927837-3	927837-4
927837-5	1-927837-5	964203-1	964203-2
964203-3	964203-4	964203-5	

TERMINAL DATA: TE TERMINAL		TE CRIMP SPECIFICATION	
TERMINAL NAME: STANDARD POWER TIMER			
WIRE STRIP LENGTH		INSULATION DIAMETER RANGE	
4.00-4.60 mm [.157-.181 IN]		Ø2.20-3.00 mm [.087-.118 IN]	
TERMINAL APPLICATION SPECIFICATION	Δ 6	-	-
TERMINALS APPLIED Δ 5			
TE TERMINAL	TE TERMINAL	TE TERMINAL	TE TERMINAL
1241404-1	-	-	-

WIRE SIZE	CRIMP HEIGHT mm [INCH]	CRIMP HEIGHT REFERENCE SETTING Δ 4
2.50mm2	1.89+/-0.05 [.074+/- .002]	6.8
1.50mm2	1.64+/-0.05 [.065+/- .002]	9.9

WIRE SIZE	CRIMP HEIGHT mm [INCH]	CRIMP HEIGHT REFERENCE SETTING Δ 4
2.50mm2	2.04+/-0.05 [.080+/- .002]	4.8
2.25mm2	1.97+/-0.05 [.078+/- .002]	5.5
2.00mm2	1.90+/-0.05 [.075+/- .002]	6.2
1.50mm2	1.76+/-0.05 [.069+/- .002]	7.6
Δ 6 16 AWG	1.70+/-0.05 [.067+/- .002]	8.0

WIRE SIZE	CRIMP HEIGHT mm [INCH]	CRIMP HEIGHT REFERENCE SETTING Δ 4
Δ 6 1.50mm2+1.00mm2	2.04+/-0.05 [.080+/- .002]	6.8
2.00mm2	1.90+/-0.05 [.075+/- .002]	8.2



- Δ 1 RECOMMENDED SPARE PARTS
- Δ 2 REFER TO SUPPLIED INSTRUCTION SHEET FOR CLEANING, LUBRICATION & STORAGE OF APPLICATOR.
- Δ 3 APPLY PART NUMBER 2-23419-6 LOCTITE TO THREADS OF ITEMS 242.
- Δ 4 CRIMP HEIGHT REFERENCE SETTING WAS THE SETTING USED WHEN THE APPLICATOR WAS QUALIFIED AT THE FACTORY. ADJUSTMENT MAY BE NECESSARY WHEN RUNNING APPLICATOR IN THE FIELD.
- Δ 5 TERMINAL LUBRICANT IS RECOMMENDED.
- Δ 6 THIS CRIMP PARAMETER IS PROVIDED TO MEET A CUSTOM AND UNIQUE CUSTOMER REQUIREMENT. IT HAS BEEN EVALUATED AND IS CONDITIONALLY SPECIFIED BY TE CONNECTIVITY. THIS CUSTOMIZED CRIMP PARAMETER IS NOT LISTED AS AN APPROVED APPLICATION WITHIN A TE CONNECTIVITY APPLICATION SPECIFICATION; HOWEVER, IT HAS BEEN VALIDATED ACCORDING TO TE CONNECTIVITY SPECIFICATIONS 109-18079 (TEST GROUP 1) AND 114-18022. **TE CONNECTIVITY EXPRESSLY DISCLAIMS ANY AND ALL WARRANTIES THAT THE PRODUCT WILL PERFORM SIMILARLY TO VALIDATED AND APPROVED APPLICATIONS, AS STATED WITHIN TE CONNECTIVITY APPLICATION SPECIFICATIONS, INCLUDING BUT NOT LIMITED TO IMPLIED WARRANTIES OF MERCHANTABILITY OR FITNESS FOR PARTICULAR PURPOSE.** AS SUCH, IT IS HIGHLY RECOMMENDED THAT THE CUSTOMER PERFORM FURTHER DETAILED EVALUATION TO ASSESS PRODUCT PERFORMANCE IN THE SPECIFIC APPLICATION.

***WARNING**
 ON INSTALLATION, SET WIRE DISC TO CRIMP HEIGHT REFERENCE SETTING. FOR LARGEST WIRE SIZE. CRIMP HEIGHT REFERENCE SETTINGS GREATER THAN THE VALUE SHOWN MAY CAUSE DAMAGE TO THE CRIMP TOOLING. REFER TO THE INSTRUCTION SHEET FOR PROPER SETUP AND ADJUSTMENTS.

7. UNLESS SPECIFIED OTHERWISE, TORQUE VALUES SHALL BE USED PER DOCUMENT, 101-35000.

ENTRY LEVEL APPLICATOR	ITEM SUBSTITUTION LIST			
PART NUMBER	SAME AS	ITEM	ITEM DESCRIPTION	SUBSTITUTE PART NUMBER
8-2151059-1	2151059-1	1	WIRE CRIMPER	1803589-3
8-2151059-2	2151059-2	3	INSULATION CRIMPER	1803625-2
9-2151059-1	2-2151059-1	46	BASIC SUB -ASSEMBLY	1803940-9
9-2151059-2	2-2151059-2	141	BASIC SUB -ASSEMBLY	1-1803940-0
			LUBRICATOR	DELETE

PACIFIC VERSION
 Shown on sheets 3 of 4 & 4 of 4
 (Atlantic version shown on sheets 1 of 4 & 2 of 4)

LOC	DIST	REVISIONS			
A	66	REV	DATE	BY	APPD
		-	SEE SHEET 1	-	-

-	1	1	2119082-4	CAM, SNAIL, INSULATION ADJUSTMENT	244
-	1	1	2079764-1	WASHER, WAVE SPRING, CREST-TO-CREST	243
Δ 3	-	1	2119083-1	RETAINER, INSULATION DIAL	242
-	1	1	18023-1	SCR, SKT HD CAP M3 X 5.0	241
-	-	-	2119580-1	MECHANICAL FEED ASSEMBLY	239
-	1	-	2844940-1	AIR FEED MODULE	238
-	REF	REF	994970-2	COUNTER, MAGNETIC	164
-	1	-	2119641-2	FEED CAM, AIR FEED	151
-	1	1	2168083-8	SCR, SKT HD CAP, RoHS, M4 X 16	144
-	4	4	2168083-9	SCR, SKT HD CAP, RoHS, M4 X 20	143
-	-	1	2119653-2	FEED CAM, POST FEED	142
-	1	1	1-1803583-0	APPLICATOR BASIC ASSEMBLY, SF	141
-	1	1	1803516-1	RAM ASSEMBLY, SF PACIFIC	140
Δ 5	-	1	2119955-1	ASSY, LUBRICATOR, SIDE FEED	113
-	1	1	2844908-1	SCREW, LOCKING	99
-	1	1	2844907-1	POST, LOCKING	98
-	1	1	455888-8	SPACER, CRIMPER	82
-	1	1	1803607-3	DOCUMENTATION PACKAGE	71
-	1	1	2119740-1	TAG, IDENTIFICATION	67
-	2	2	2168078-1	SCREW, DRIVE, RH, RoHS, 2 x .188	66
-	1	1	5-18022-5	SCR, HEX HD CAP, M4 X 6.0	59
-	1	1	1338685-1	PAWL, FEED	56
-	2	2	2168083-3	SCR, SKT HD CAP, RoHS, M4 X 12.0	53
-	1	1	1803382-2	HOLD DOWN, SPRING LOADED	50
-	1	2	18023-9	SCR, SKT HD CAP M4 X 6.0	49
-	-	-	2119652-1	FEED CAM, PRE FEED	48
-	1	1	1803602-1	SCR, BHSC, RoHS (M8 X 25)	41
-	1	1	1-1752356-2	SUPPORT, TERMINAL	34
-	2	2	2079383-5	SCR, BHSC, RoHS (M4 X 20)	33
-	2	2	3-2844962-0	SPACER, CYLINDRICAL, STRIP GUIDE	30
-	1	1	2844992-2	ASSEMBLY, STRIP GUIDE	29
-	1	1	1-455888-0	SPACER, CRIMPER	28
-	1	1	1320928-2	STRIP GUIDE	24
-	1	1	2168083-2	SCR, SKT HD CAP, RoHS, M4 X 8.0	21
-	2	2	1-18028-2	WASHER, FLAT, REG M4	20
-	1	1	2119533-1	STRIPPER, SIDE FEED	19
Δ 1	-	1	2119806-1	INSERT, SHEAR	13
-	1	1	3-22280-3	SPRING, COMPRESSION	12
-	1	1	1-356885-4	STOP, SHEAR	11
Δ 1	-	1	2119805-1	SHEAR HOLDER, FRONT	10
Δ 1	-	1	1803095-5	FLOATING SHEAR, FRONT	9
Δ 1	1	1	1333207-2	ANVIL, COMBINATION .110	8
-	1	1	6-240641-4	SPACER	7
-	1	1	2119757-4	DEPRESSOR, SHEAR	5
-	1	1	2-238011-2	BLOCK, CRIMPER SPACER	4
Δ 1	1	1	2119785-2	CRIMPER, INSULATION OVERLAP PREMIUM	3
-	1	1	455888-6	SPACER, CRIMPER	2
Δ 1	1	1	456408-3	CRIMPER, WIRE PREMIUM	1

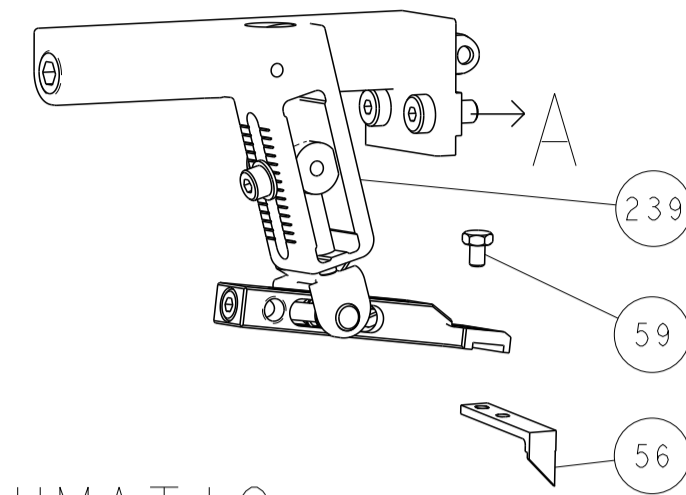
DIMENSIONS:		TOLERANCES UNLESS OTHERWISE SPECIFIED:	
mm	0 PLC	±	
	1 PLC	±	
	2 PLC	±	
	3 PLC	±	
	4 PLC	±	
ANGLES		±	
MATERIAL	FINISH		

REV	DATE	BY	APPD	DESCRIPTION
1	16SEP2011	Y. LIN	G. BAILEY	TE Connectivity Harrisburg, PA 17105-3608
2	16SEP2011	S. XI		Ocean Side Feed Applicator

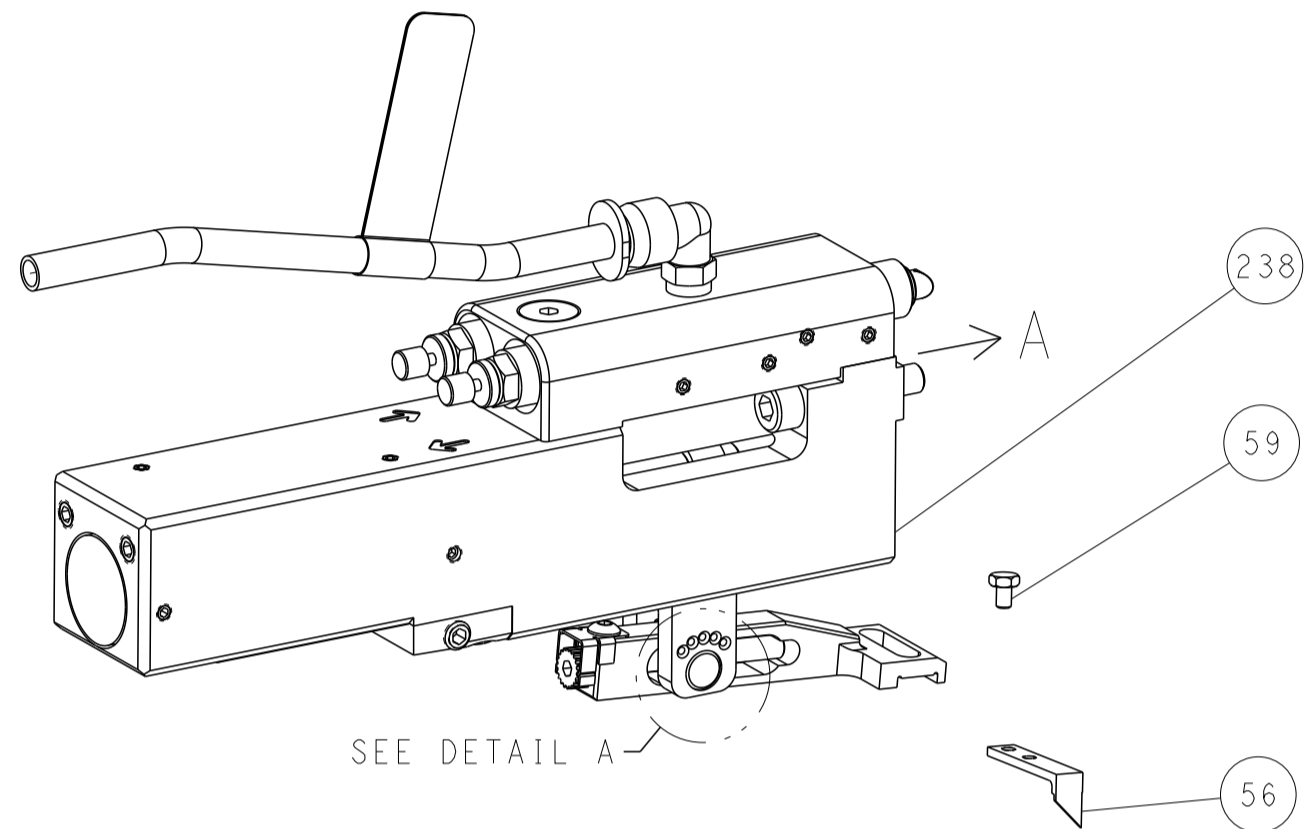
SIZE	CAGE CODE	DRAWING NO	RESTRICTED TO
A1	00779	©=2151059	

Customer Accessible Production Drawing SCALE 1:2 SHEET 3 OF 4 REV S

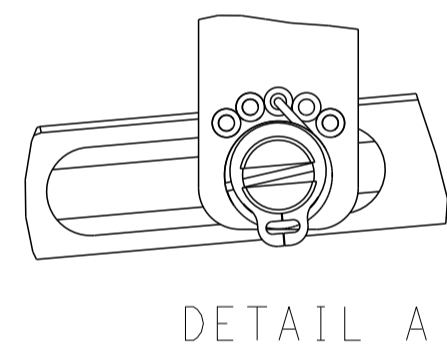
FEED TYPE MECHANICAL



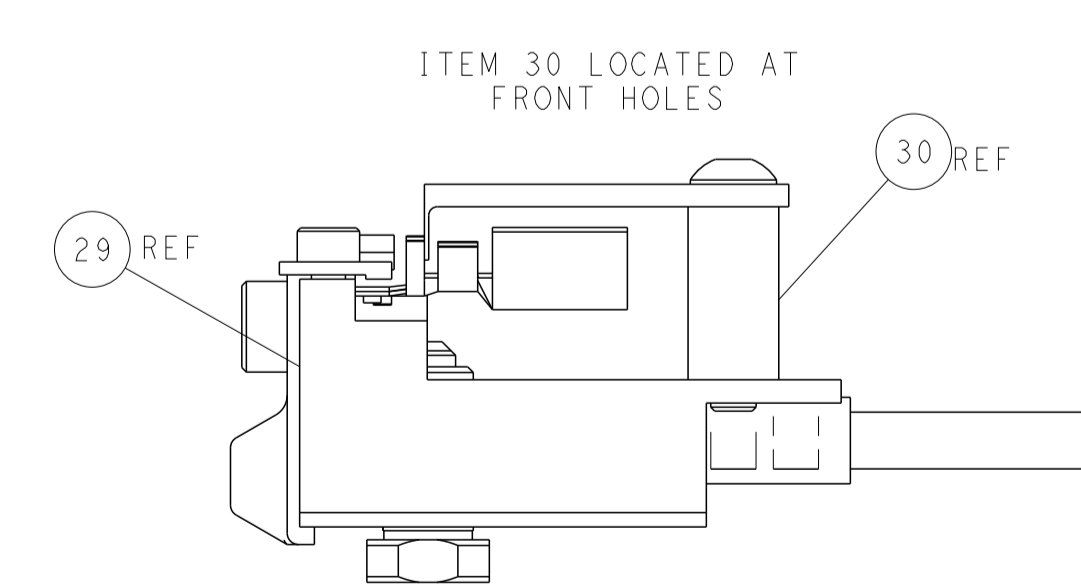
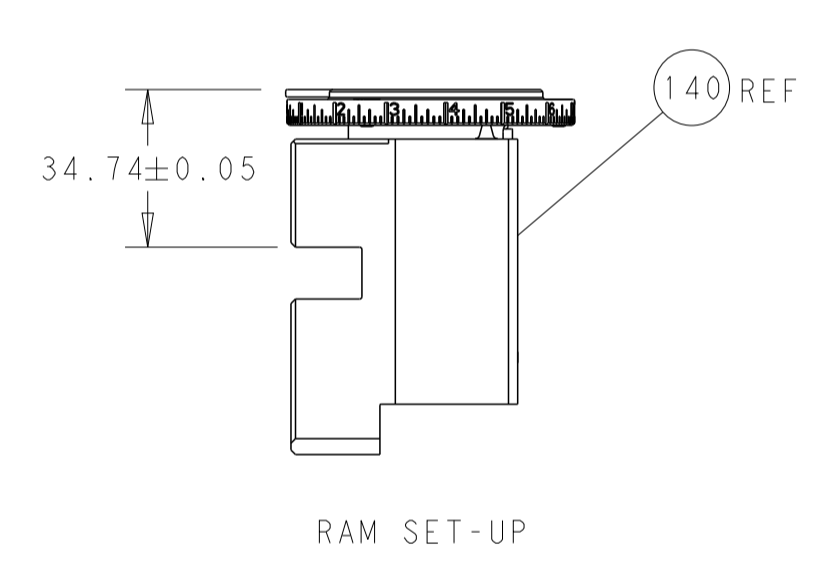
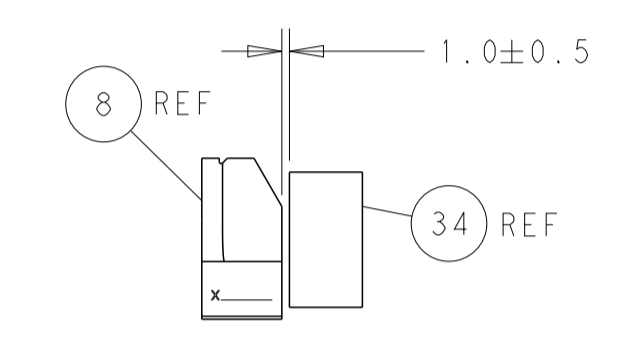
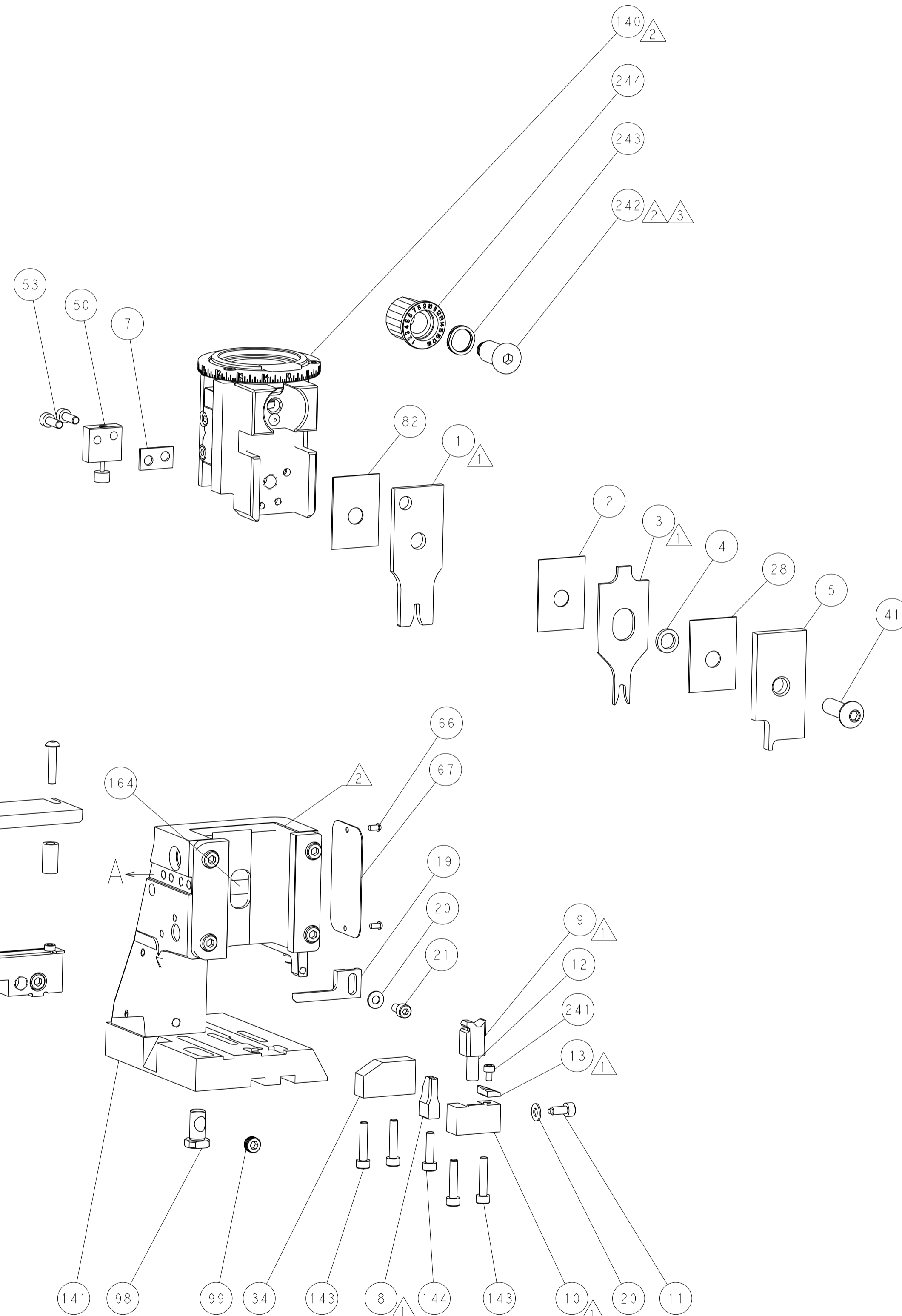
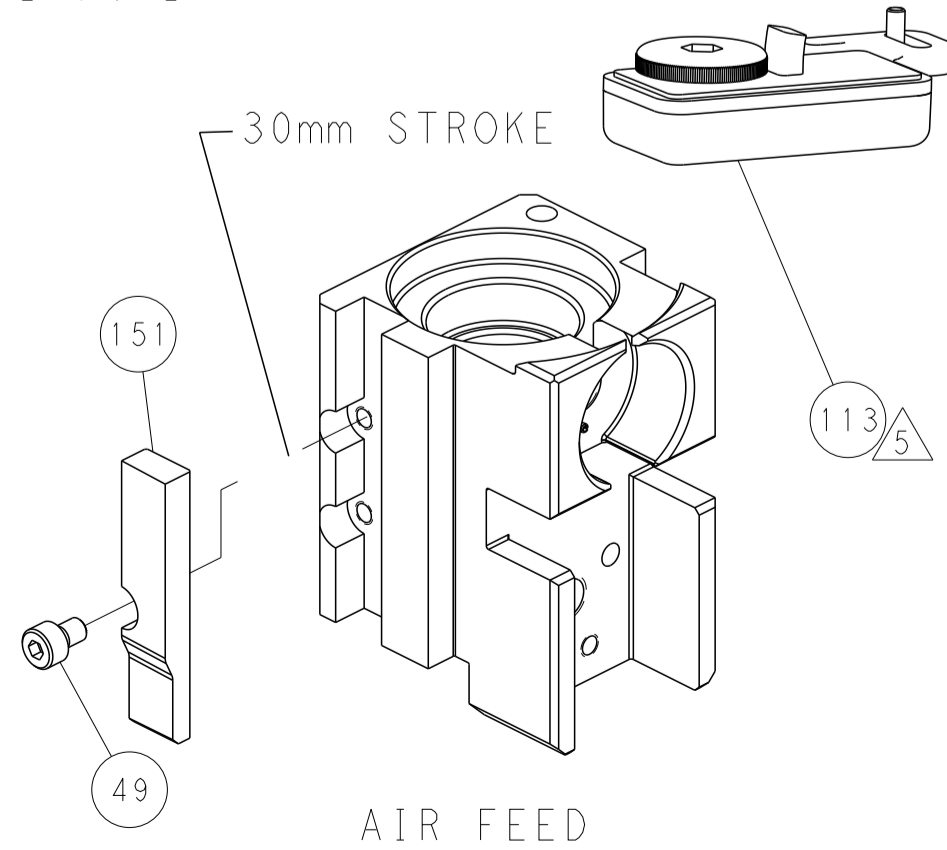
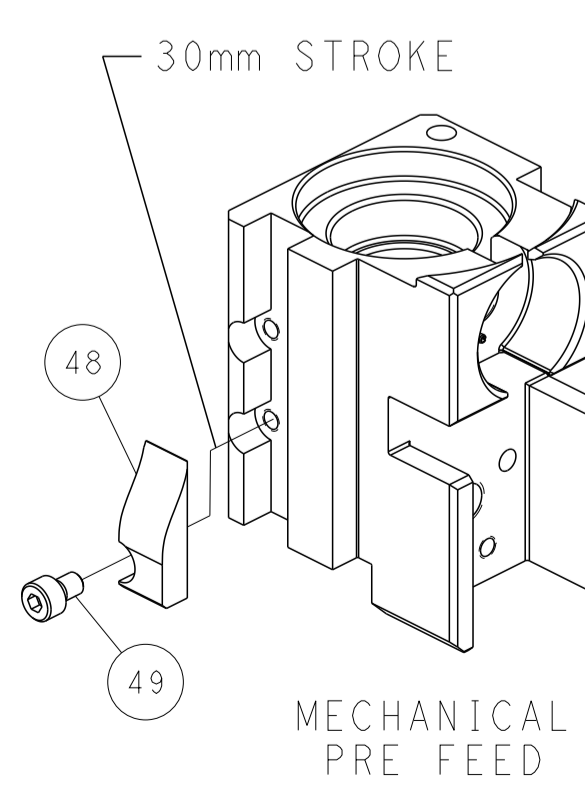
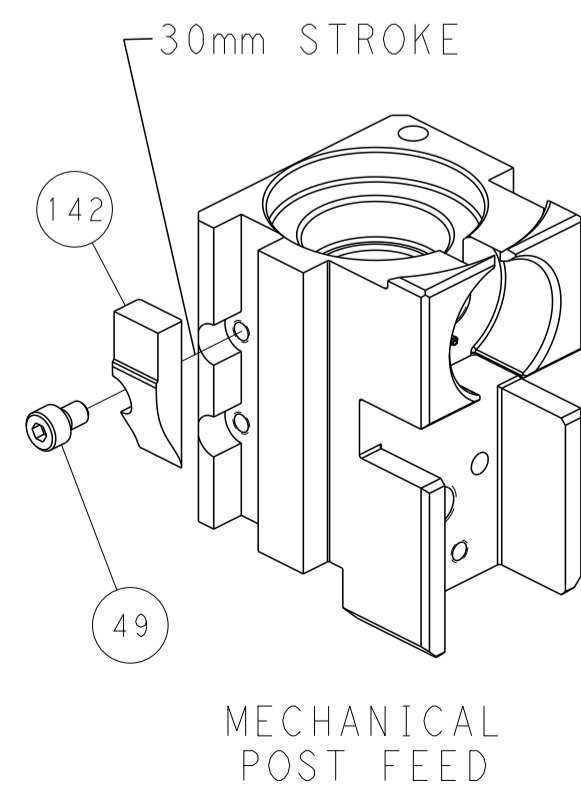
PNEUMATIC



FEED SPRING SETTING POSITION (SHOWN FROM REAR SIDE)



CAM POSITIONS



PACIFIC VERSION
 Shown on sheets 3 of 4 & 4 of 4
 (Atlantic version shown on sheets 1 of 4 & 2 of 4)

DIMENSIONS:		TOLERANCES UNLESS OTHERWISE SPECIFIED:		DWG		REV	
mm	0 PLC	±		Y. YIN	16SEP2011	NAME	TE Connectivity
	1 PLC	±		G. BAILEY	16SEP2011	SIZE	Harrisburg, PA 17105-3608
	2 PLC	±		S. XI	16SEP2011	APVD	
	3 PLC	±				PRODUCT SPEC	
	4 PLC	±				APPLICATION SPEC	
	ANGLES	±				WEIGHT	
MATERIAL	FINISH					CAGE CODE	
						00779	
						SCALE	
						1:2	
						SHEET	
						4	
						OF	
						4	
						REV	
						S	

SHEETS 1 & 2 ARE NOT REQUIRED FOR PACIFIC VERSION

Mouser Electronics

Authorized Distributor

Click to View Pricing, Inventory, Delivery & Lifecycle Information:

[TE Connectivity:](#)

[2151059-1](#)