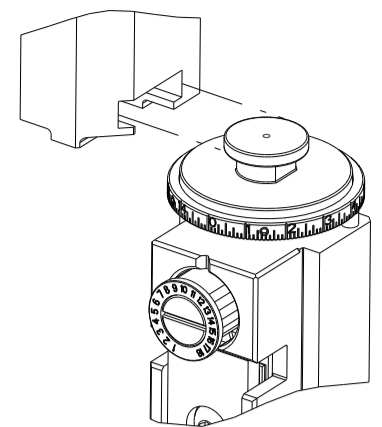


PART NUMBER	REVISION	DESCRIPTION	FEED TYPE
2150607-2	D	FINE CRIMP HEIGHT ADJUST	PNEUMATIC
7-2150607-2	D	PNEUMATIC AND CRIMP TOOLING KIT	PNEUMATIC
7-2150607-7	A	CRIMP TOOLING KIT	-

ATLANTIC VERSION TERMINATOR
INTERFACE ADAPTER



APPLICATOR DATA		
CRIMP	SIZE	TYPE
WIRE	1.78 mm [.070]	F
APPL INSTRUCTIONS 408-35043		

TERMINAL DATA: TE TERMINAL		TE CRIMP SPECIFICATION	
TERMINAL NAME: .110 SERIES FASTON FLAG			
WIRE STRIP LENGTH		INSULATION DIAMETER RANGE	
5.20-5.96 mm [.205-.235 IN]		∅2.20-3.00 mm [.087-.118 IN]	
TERMINAL APPLICATION SPECIFICATION	114-2028		
TERMINALS APPLIED			
TE TERMINAL	TE TERMINAL	TE TERMINAL	TE TERMINAL
62321-1	63990-1	61549-1	

WIRE SIZE	CRIMP HEIGHT mm [INCH]	CRIMP HEIGHT REFERENCE SETTING
16 AWG	1.37 +/- 0.05 [.054 +/- .002]	4.4
18 AWG	1.19 +/- 0.05 [.047 +/- .002]	6.3
20 AWG	1.04 +/- 0.05 [.041 +/- .002]	7.7
22 AWG	0.97 +/- 0.05 [.038 +/- .002]	8.6



- 1 RECOMMENDED SPARE PARTS
- 2 REFER TO SUPPLIED INSTRUCTION SHEET FOR CLEANING, LUBRICATION AND STORAGE OF APPLICATOR.
- 3 TERMINAL PITCH NOT COMPATIBLE WITH MECHANICAL FEED.
- 4 CRIMP HEIGHT REFERENCE SETTING WAS THE SETTING USED WHEN THE APPLICATOR WAS QUALIFIED AT THE FACTORY. ADJUSTMENT MAY BE NECESSARY WHEN RUNNING APPLICATOR IN THE FIELD.
- 5 TERMINAL LUBRICANT IS RECOMMENDED.
- 6. UNLESS SPECIFIED OTHERWISE TORQUE VALUES SHALL BE USED PER DOCUMENT, 101-35000.

***WARNING**
ON INSTALLATION, SET WIRE DISC TO CRIMP HEIGHT REFERENCE SETTING FOR LARGEST WIRE SIZE. CRIMP HEIGHT REFERENCE SETTINGS GREATER THAN THE VALUE SHOWN MAY CAUSE DAMAGE TO THE CRIMP TOOLING. REFER TO THE INSTRUCTION SHEET FOR PROPER SETUP AND ADJUSTMENTS.

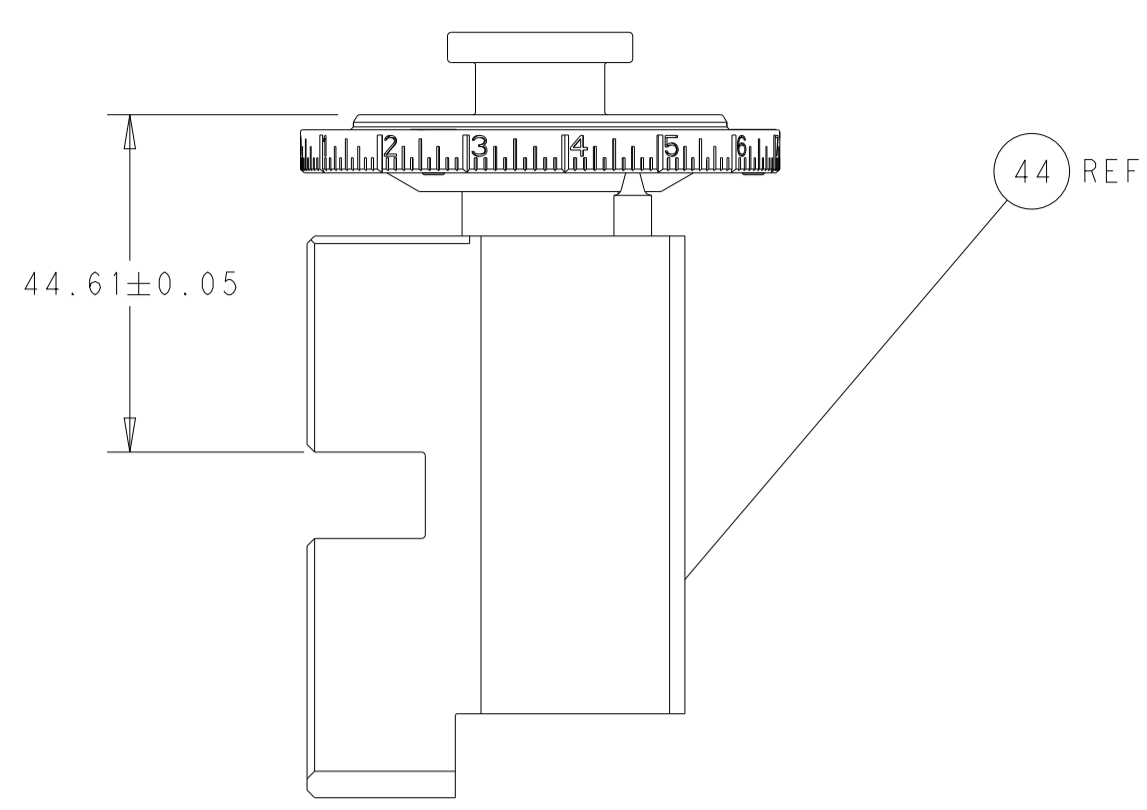
LOC	DIST	REVISIONS					
A	66	P	LTN	DESCRIPTION	DATE	DWN	APVD
		A		RELEASED	29SEP2015	BW	GB
		B		ECR-19-002972	24FEB2019	TB	CT
		C		ECR-21-003458	20MAR2021	TB	RK
		D		ECR-21-004435	15APR2021	FZ	RK

-	1	1	2119641-1	FEED CAM, AIR FEED	248	
-	1	1	2844940-3	AIR FEED MODULE	238	
-	REF	REF	994970-2	COUNTER, MAGNETIC	164	
5	-	1	1	2119955-2	ASSY, LUBRICATOR, END FEED	84
-	1	1	455888-5	SPACER, CRIMPER	82	
-	1	1	1803607-4	DOCUMENTATION PACKAGE	71	
-	2	2	2-18032-2	SCR, SET, FLT PNT, M3 X 10.0	70	
-	1	1	2119740-1	TAG, IDENTIFICATION	67	
-	2	2	2168078-1	SCREW, DRIVE, RH, RoHS, 2 x .188	66	
-	1	1	2168083-2	SCR, SKT HD CAP, RoHS, M4 X 8.0	60	
-	1	1	5-18022-5	SCR, HEX HD CAP, M4 X 6.0	59	
-	5	5	2168400-1	SHCS, LOW HEAD, RoHS, M4 X 12	57	
-	2	2	1-2168083-4	SCR, SKT HD CAP, RoHS, M4 X 5	56	
-	2	2	5018030-1	NUT, HEX, REG, RoHS, M3	54	
-	2	2	986965-8	NUT, LOCK, HEX, TORQUE (M4)	53	
-	1	1	2063961-1	FEED FINGER	51	
-	1	1	18023-9	SCR, SKT HD CAP M4 X 6.0	49	
-	1	1	2119655-5	APPLICATOR BASIC ASSEMBLY, EF	46	
-	1	1	1803517-1	RAM ASSEMBLY, EF ATLANTIC	44	
-	1	1	1803602-1	SCR, BHSC, RoHS (M8 X 25)	41	
-	7	7	1-18028-2	WASHER, FLAT, REG M4	33	
-	1	1	683385-1	SPACER, STRIP HOLD PLATE	32	
-	2	2	2168083-9	SCR, SKT HD CAP, RoHS, M4 X 20	31	
-	2	2	2168083-2	SCR, SKT HD CAP, RoHS, M4 X 8.0	29	
-	1	1	690455-2	STRIPPER, FRONT CASTING	27	
-	2	2	1-2168083-6	SCR, SKT HD CAP, RoHS, M4 X 35	25	
-	1	1	1752371-5	PLATE, STRIP GUIDE	24	
-	1	1	457144-1	PLATE, STRIP HOLD	23	
-	2	2	22281-9	SPRING, COMPRESSION	22	
-	1	1	1803292-4	DRAG	20	
-	1	1	1803086-5	GUIDE, REAR STRIP	19	
-	1	1	1803100-2	GUIDE, FRONT STRIP	18	
-	4	4	1-2079383-1	SCR, BHSC, RoHS (M6 X 12)	17	
1	-	1	1	240644-1	PLATE, REAR SHEAR	11
1	-	2	2	1-240645-0	SPACER, SHEAR PLATE	10
1	-	1	1	240642-5	PLATE, FRONT SHEAR	9
1	1	2	1	1-1803002-3	ANVIL, COMBINATION, END FEED	8
1	-	1	1	240651-4	BLADE, SLUG	7
-	-	-	-	-	-	6
-	-	-	-	-	-	5
-	-	-	-	-	-	4
-	-	-	-	-	-	3
-	-	-	-	-	-	2
1	1	2	1	1-456404-1	CRIMPER, WIRE PREMIUM	1
-	77	72	2	PART NO	DESCRIPTION	ITEM NO

ATLANTIC VERSION
Shown on sheets 1 of 4 & 2 of 4
(Pacific version shown on sheets 3 of 4 & 4 of 4)

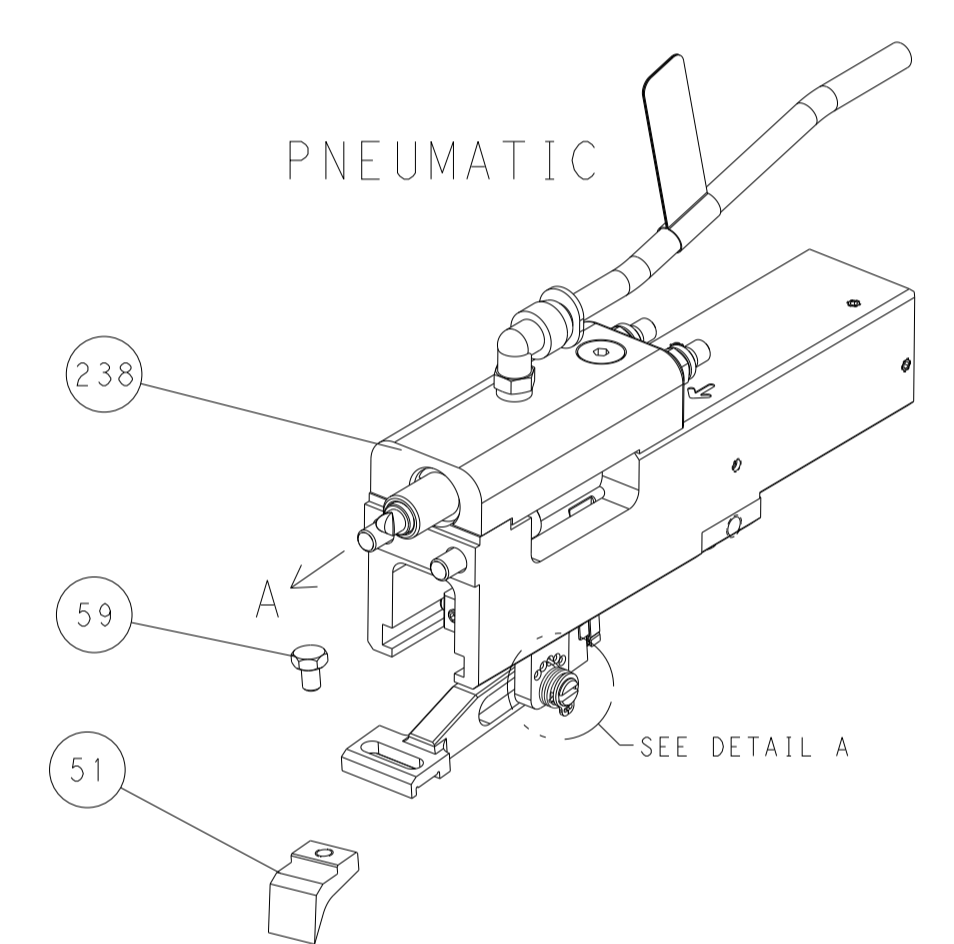
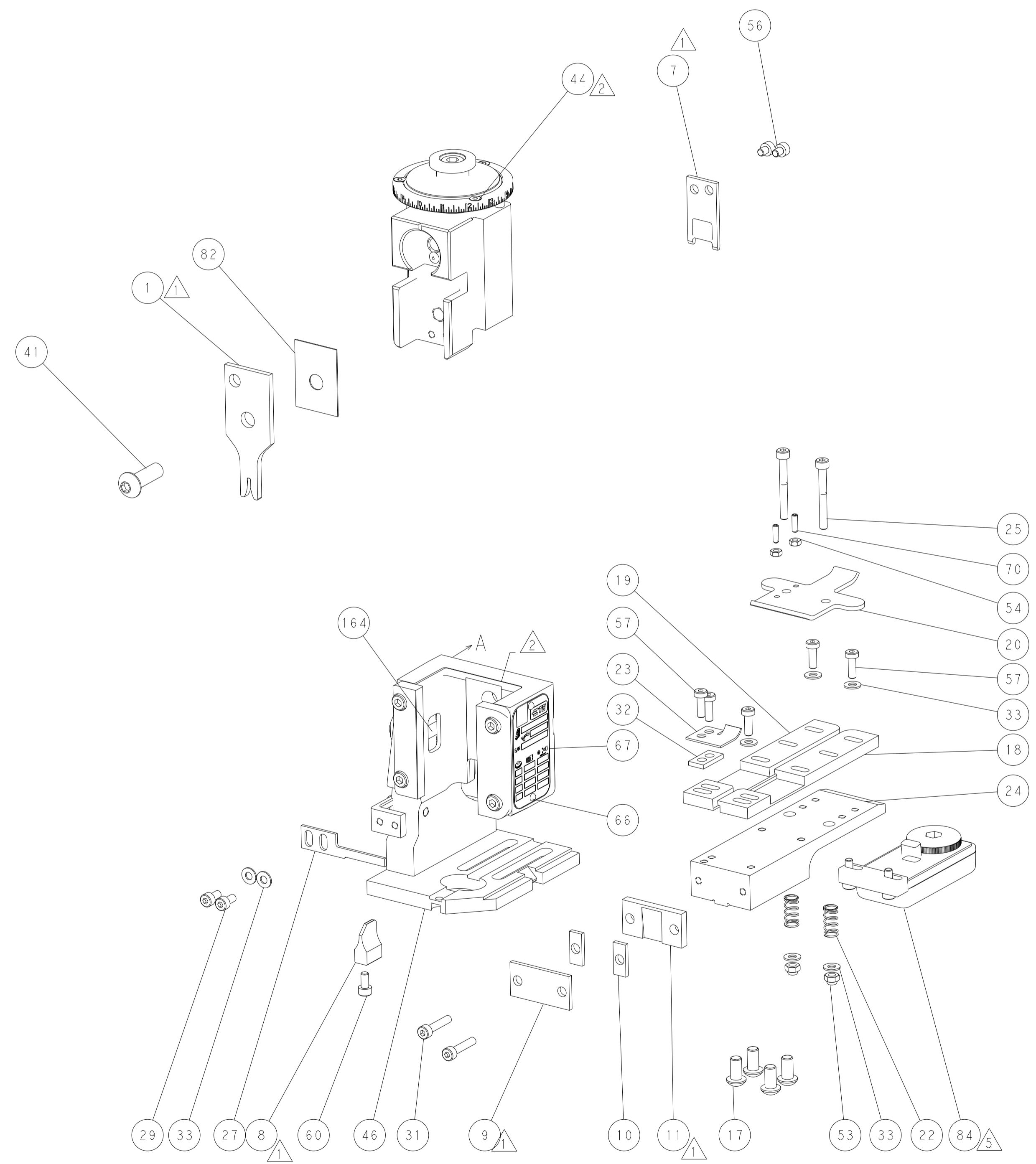
DIMENSIONS:		TOLERANCES UNLESS OTHERWISE SPECIFIED:		MATERIAL:	
mm	0 PLC ±	1 PLC ±	2 PLC ±	3 PLC ±	4 PLC ±
	ANGLES ±	FINISH			
DWN: B. WEAVER 28JUL2015		CHK: G. BAILEY 28JUL2015		APVD: G. BAILEY 28JUL2015	
NAME: Ocean End Feed Applicator		SIZE: A1		CAGE CODE: 00779	
DRAWING NO: 2150607		SCALE: 1:1		SHEET 1 OF 4	
REV: D		Customer Accessible Production Drawing		RESTRICTED TO:	

LOC	DIST	REVISIONS			
P	LTN	DESCRIPTION	DATE	OWN	APVD
A	66	SEE SHEET 1	-	-	-

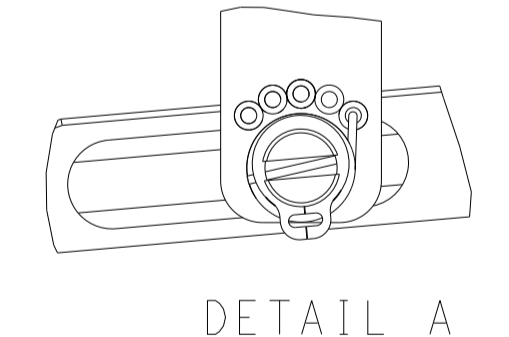


RAM SET-UP

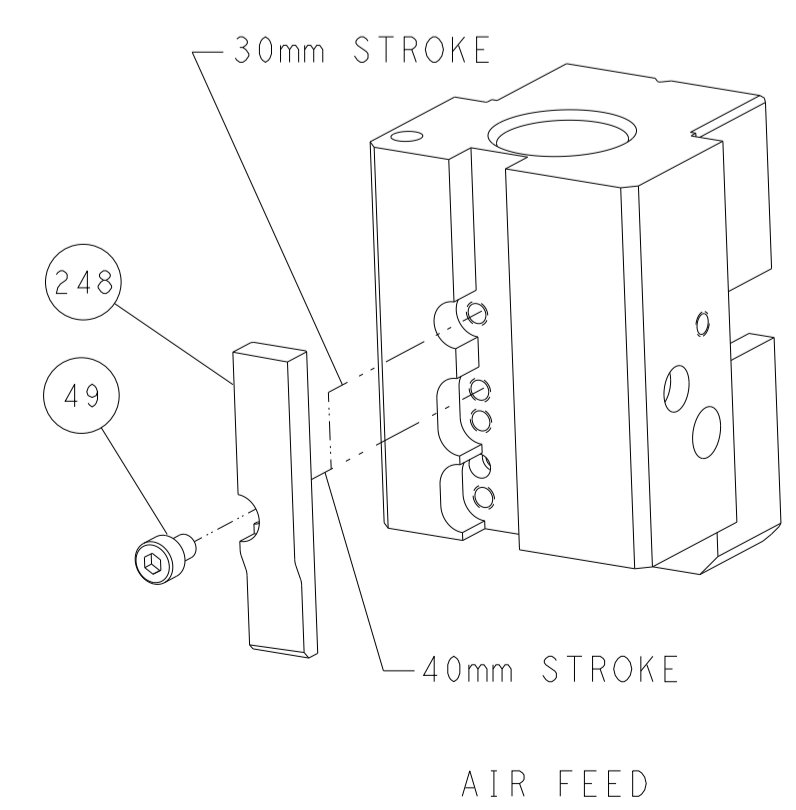
FEED TYPE



FEED SPRING SETTING POSITION



CAM POSITION



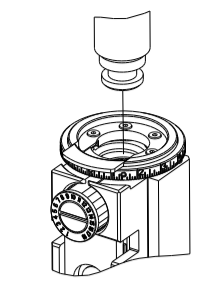
ATLANTIC VERSION
 Shown on sheets 1 of 4 & 2 of 4
 (Pacific version shown on sheets 3 of 4 & 4 of 4)

<small>THIS DRAWING IS UNPUBLISHED. RELEASED FOR PUBLICATION 2015. COPYRIGHT 2015 BY TYCO ELECTRONICS CORPORATION. ALL RIGHTS RESERVED.</small>		DWN B. WEAVER 28JUL2015 CHK G. BAILEY 28JUL2015 APVD G. BAILEY 28JUL2015	TE Connectivity Harrisburg, PA 17105-3608
DIMENSIONS: mm 		TOLERANCES UNLESS OTHERWISE SPECIFIED: 0 PLC ± 1 PLC ± 2 PLC ± 3 PLC ± 4 PLC ± ANGLES ± FINISH ±	NAME: Ocean End Feed Applicator SIZE: A1 CAGE CODE: 00779 DRAWING NO: C=2150607 RESTRICTED TO:
MATERIAL:		WEIGHT:	SCALE: 1:1 SHEET: 2 of 4 REV: D

THIS DRAWING IS UNPUBLISHED. RELEASED FOR PUBLICATION 2015
 COPYRIGHT 2015 BY TYCO ELECTRONICS CORPORATION. ALL RIGHTS RESERVED.

PART NUMBER	REVISION	DESCRIPTION	FEED TYPE
2-2150607-2	D	FINE CRIMP HEIGHT ADJUST	PNEUMATIC
7-2150607-7	A	CRIMP TOOLING KIT	-

PACIFIC VERSION TERMINATOR
 INTERFACE ADAPTER



APPLICATOR DATA		
CRIMP	SIZE	TYPE
WIRE	1.78 mm (.070)	F
APPL INSTRUCTIONS 408-35043		

TERMINAL DATA: TE TERMINAL		TE CRIMP SPECIFICATION	
TERMINAL NAME: .110 SERIES FASTON FLAG			
WIRE STRIP LENGTH 5.20-5.96 mm (.205-.235 IN)		INSULATION DIAMETER RANGE Ø2.20-3.00 mm (.087-.118 IN)	
TERMINAL APPLICATION SPECIFICATION 114-2028			
TERMINALS APPLIED			
TE TERMINAL 62321-1	TE TERMINAL 63990-1	TE TERMINAL 61549-1	TE TERMINAL

WIRE SIZE	CRIMP HEIGHT mm [INCH]	CRIMP HEIGHT REFERENCE SETTING
16 AWG	1.37+/-0.05 [.054+/-0.002]	4.4
18 AWG	1.19+/-0.05 [.047+/-0.002]	6.3
20 AWG	1.04+/-0.05 [.041+/-0.002]	7.7
22 AWG	0.97+/-0.05 [.038+/-0.002]	8.6



- 1 RECOMMENDED SPARE PARTS
- 2 REFER TO SUPPLIED INSTRUCTION SHEET FOR CLEANING, LUBRICATION AND STORAGE OF APPLICATOR.
- 3 TERMINAL PITCH NOT COMPATIBLE WITH MECHANICAL FEED.
- 4 CRIMP HEIGHT REFERENCE SETTING WAS THE SETTING USED WHEN THE APPLICATOR WAS QUALIFIED AT THE FACTORY. ADJUSTMENT MAY BE NECESSARY WHEN RUNNING APPLICATOR IN THE FIELD.
- 5 TERMINAL LUBRICANT IS RECOMMENDED.
- 6. UNLESS SPECIFIED OTHERWISE TORQUE VALUES SHALL BE USED PER DOCUMENT, 101-35000.

***WARNING**
 ON INSTALLATION, SET WIRE DISC TO CRIMP HEIGHT REFERENCE SETTING FOR LARGEST WIRE SIZE. CRIMP HEIGHT REFERENCE SETTINGS GREATER THAN THE VALUE SHOWN MAY CAUSE DAMAGE TO THE CRIMP TOOLING. REFER TO THE INSTRUCTION SHEET FOR PROPER SETUP AND ADJUSTMENTS.

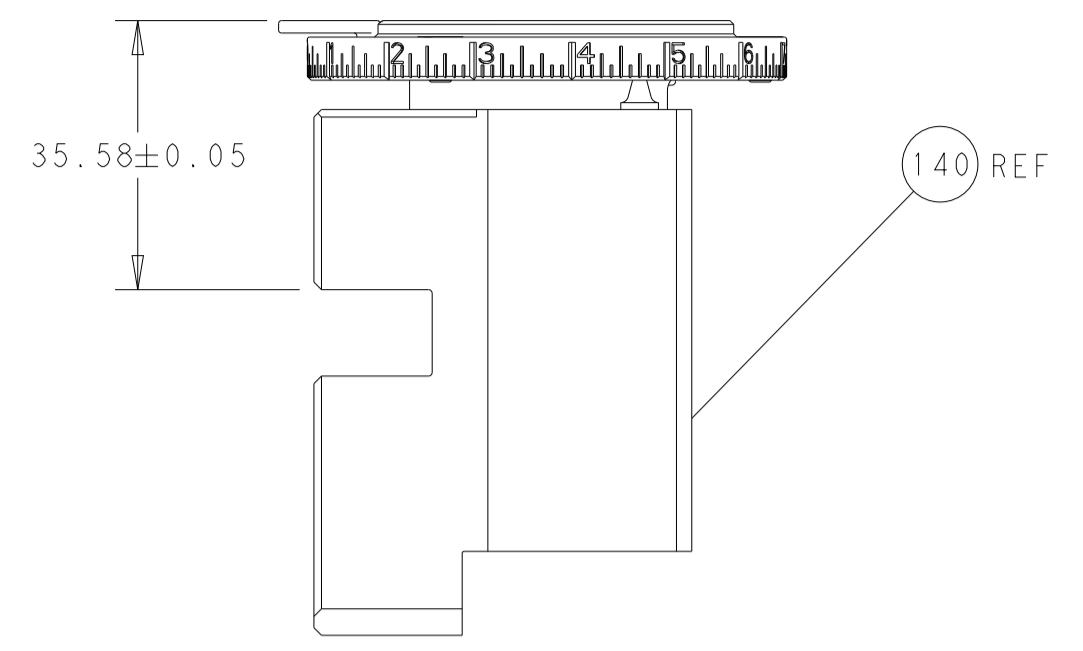
LOC	DIST	REVISIONS					
		P	LTN	DESCRIPTION	DATE	OWN	APVD
A	66	-	-	SEE SHEET 1	-	-	-

-	1	2844940-3	AIR FEED MODULE	238
-	4	2079383-9	SCR, BHSC, RoHS (M6 X 20)	186
-	REF	994970-2	COUNTER, MAGNETIC	164
-	1	2119641-2	FEED CAM, AIR FEED	152
-	1	2168083-8	SCR, SKT HD CAP, RoHS, M4 X 16	144
-	1	2119655-6	APPLICATOR BASIC ASSEMBLY, EF	141
-	1	1803518-1	RAM ASSEMBLY, EF PACIFIC	140
-	1	2119955-2	ASSY, LUBRICATOR, END FEED	84
-	1	455888-5	SPACER, CRIMPER	82
-	1	1803607-4	DOCUMENTATION PACKAGE	71
-	2	2-18032-2	SCR, SET, FLT PNT, M3 X 10.0	70
-	1	2119740-1	TAG, IDENTIFICATION	67
-	2	2168078-1	SCREW, DRIVE, RH, RoHS, 2 x .188	66
-	1	5-18022-5	SCR, HEX HD CAP, M4 X 6.0	59
-	5	2168400-1	SHCS, LOW HEAD, RoHS, M4 X 12	57
-	2	1-2168083-4	SCR, SKT HD CAP, RoHS, M4 X 5	56
-	2	5018030-1	NUT, HEX, REG, RoHS, M3	54
-	2	986965-8	NUT, LOCK, HEX, TORQUE (M4)	53
-	1	2063961-1	FEED FINGER	51
-	1	18023-9	SCR, SKT HD CAP M4 X 6.0	49
-	1	1803602-1	SCR, BHSC, RoHS (M8 X 25)	41
-	7	1-18028-2	WASHER, FLAT, REG M4	33
-	1	683385-1	SPACER, STRIP HOLD PLATE	32
-	2	2168083-9	SCR, SKT HD CAP, RoHS, M4 X 20	31
-	2	2168083-2	SCR, SKT HD CAP, RoHS, M4 X 8.0	29
-	1	690455-2	STRIPPER, FRONT CASTING	27
-	2	1-2168083-6	SCR, SKT HD CAP, RoHS, M4 X 35	25
-	1	1752371-5	PLATE, STRIP GUIDE	24
-	1	457144-1	PLATE, STRIP HOLD	23
-	2	22281-9	SPRING, COMPRESSION	22
-	1	1803292-4	DRAG	20
-	1	1803086-5	GUIDE, REAR STRIP	19
-	1	1803100-2	GUIDE, FRONT STRIP	18
-	1	240644-1	PLATE, REAR SHEAR	11
-	2	1-240645-0	SPACER, SHEAR PLATE	10
-	1	240642-5	PLATE, FRONT SHEAR	9
1	1	1-1803002-3	ANVIL, COMBINATION, END FEED	8
-	1	240651-4	BLADE, SLUG	7
-	-	-	-	6
-	-	-	-	5
-	-	-	-	4
-	-	-	-	3
-	-	-	-	2
1	1	1-456404-1	CRIMPER, WIRE PREMIUM	1
-77-	22	PART NO	DESCRIPTION	ITEM NO

PACIFIC VERSION
 Shown on sheets 3 of 4 & 4 of 4
 (Atlantic version shown on sheets 1 of 4 & 2 of 4)

DIMENSIONS: mm 		TOLERANCES UNLESS OTHERWISE SPECIFIED: 0 PLC ± 1 PLC ± 2 PLC ± 3 PLC ± 4 PLC ± ANGLES ± FINISH ±		DWN B. WEAVER 28JUL2015 CHK G. BAILEY 28JUL2015 APVD G. BAILEY 28JUL2015 PRODUCT SPEC APPLICATION SPEC WEIGHT SCALE 1:1 SHEET 3 OF 4 REV D		NAME Ocean End Feed Applicator SIZE CAGE CODE DRAWING NO A1 00779 ©=2150607 RESTRICTED TO	
-----------------------	--	---	--	--	--	---	--

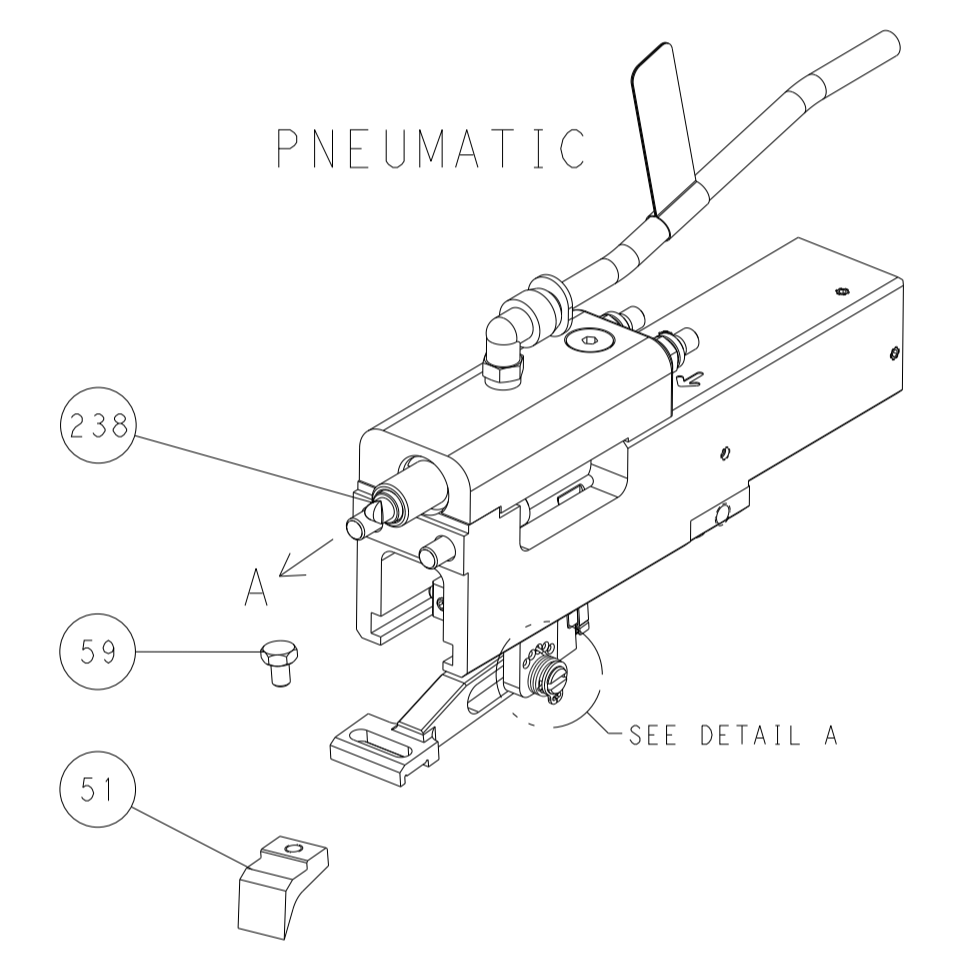
LOC	DIST	REVISIONS			
P	LTN	DESCRIPTION	DATE	OWN	APVD
A	66	SEE SHEET 1	-	-	-



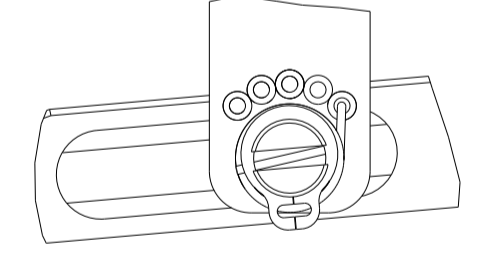
RAM SET-UP

FEED TYPE

PNEUMATIC

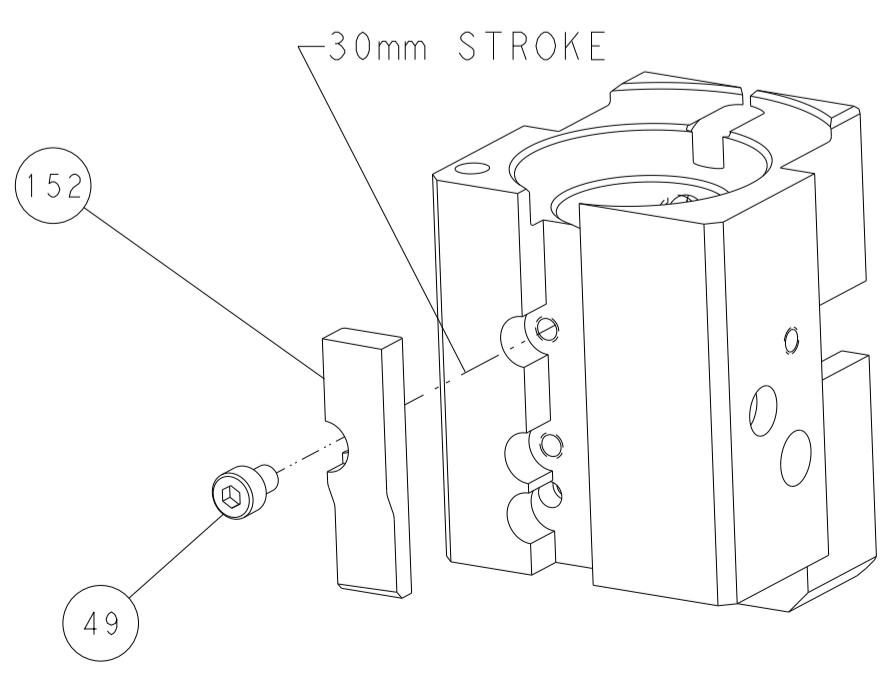


FEED SPRING SETTING POSITION

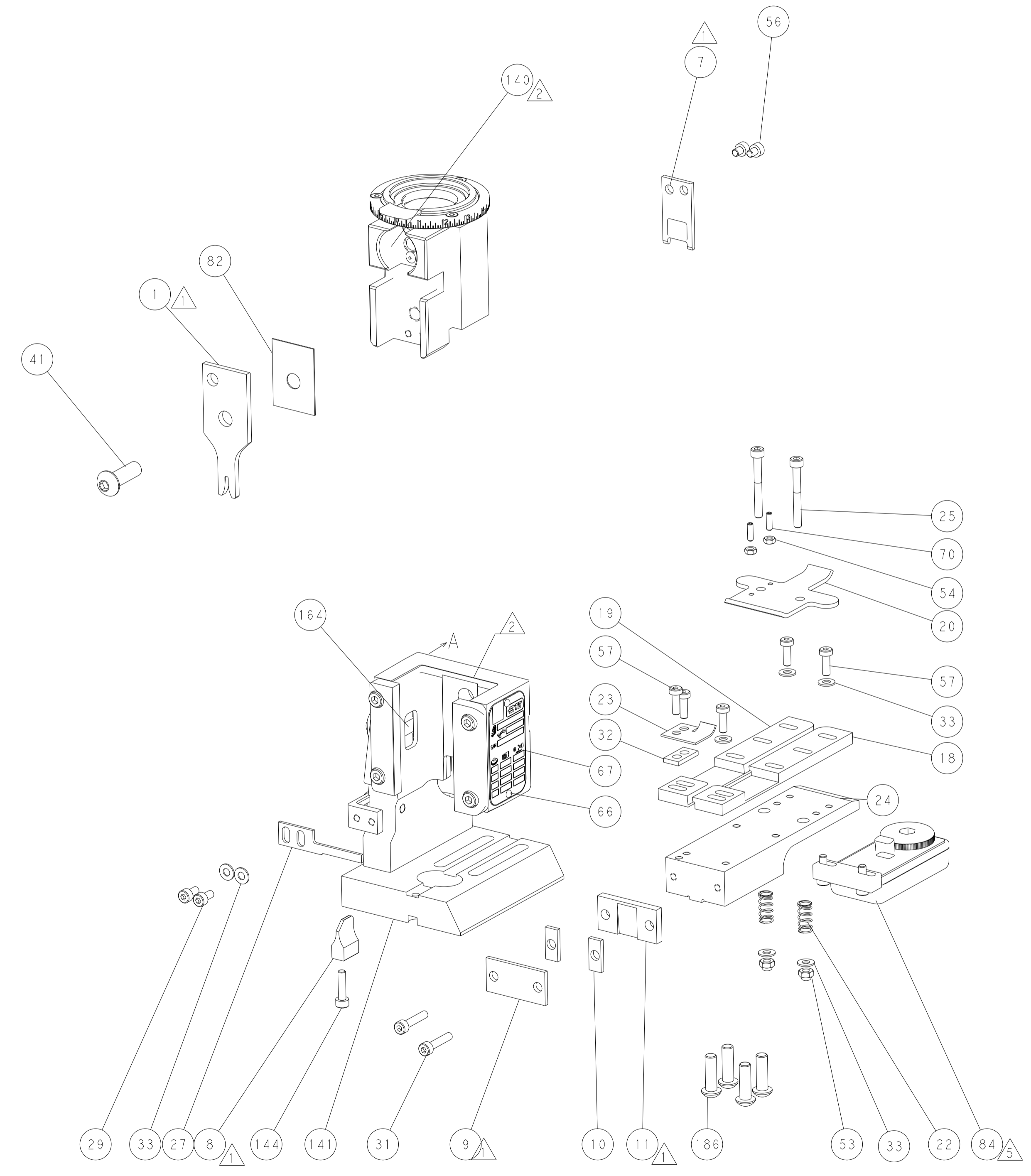


DETAIL A

CAM POSITION



AIR FEED



PACIFIC VERSION
 Shown on sheets 3 of 4 & 4 of 4
 (Atlantic version shown on sheets 1 of 4 & 2 of 4)

<small>THIS DRAWING IS UNPUBLISHED. RELEASED FOR PUBLICATION 2015. COPYRIGHT 2015 BY TYCO ELECTRONICS CORPORATION. ALL RIGHTS RESERVED.</small>		DWN B. WEAVER 28JUL2015 CHK G. BAILEY 28JUL2015 APVD G. BAILEY 28JUL2015	TE Connectivity Harrisburg, PA 17105-3608
DIMENSIONS: mm 		TOLERANCES UNLESS OTHERWISE SPECIFIED: 0 PLC ± 1 PLC ± 2 PLC ± 3 PLC ± 4 PLC ± ANGLES ± FINISH ±	NAME Ocean End Feed Applicator SIZE A1 CAGE CODE 00779 DRAWING NO. C-2150607 RESTRICTED TO
MATERIAL:		WEIGHT:	SCALE 1:1 SHEET 4 OF 4 REV D

Mouser Electronics

Authorized Distributor

Click to View Pricing, Inventory, Delivery & Lifecycle Information:

[TE Connectivity:](#)

[2150607-1](#)