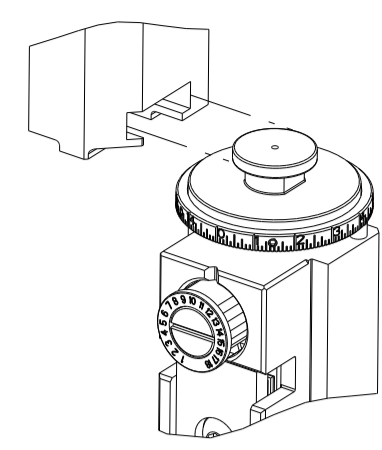


| PART NUMBER | REVISION | DESCRIPTION                      | FEED TYPE  |
|-------------|----------|----------------------------------|------------|
| 2150360-1   | B        | FINE CRIMP HEIGHT ADJUST         | MECHANICAL |
| 2150360-2   | B        | FINE CRIMP HEIGHT ADJUST         | PNEUMATIC  |
| 7-2150360-1 | B        | MECHANICAL AND CRIMP TOOLING KIT | MECHANICAL |
| 7-2150360-2 | B        | PNEUMATIC AND CRIMP TOOLING KIT  | PNEUMATIC  |
| 7-2150360-7 | A        | CRIMP TOOLING KIT                | -          |

ATLANTIC VERSION TERMINATOR INTERFACE ADAPTER



| APPLICATOR DATA |                |      |
|-----------------|----------------|------|
| CRIMP           | SIZE           | TYPE |
| WIRE            | 1.07 mm [.042] | F    |
| INSUL           | 1.78 mm [.070] | F    |

APPLICATOR INSTRUCTIONS 408-35043

| TERMINAL DATA: TE TERMINAL         |             | TE CRIMP SPECIFICATION       |             |
|------------------------------------|-------------|------------------------------|-------------|
| TERMINAL NAME: RING TONGUE         |             |                              |             |
| WIRE STRIP LENGTH                  |             | INSULATION DIAMETER RANGE    |             |
| 2.30-2.90 mm [.091-.114 IN]        |             | ∅0.76-1.27 mm [.030-.050 IN] |             |
| TERMINAL APPLICATION SPECIFICATION | 114-2084    |                              |             |
| TERMINALS APPLIED                  |             |                              |             |
| TE TERMINAL                        | TE TERMINAL | TE TERMINAL                  | TE TERMINAL |
| 160562-1                           | 160562-2    |                              |             |

| WIRE SIZE | CRIMP HEIGHT mm [INCH]      | CRIMP HEIGHT REFERENCE SETTING |
|-----------|-----------------------------|--------------------------------|
| 26 AWG    | 0.96+/-0.000 [.038+/- .000] | 4.8                            |
| 28 AWG    | 0.92+/-0.000 [.036+/- .000] | 5.2                            |

- 1. RECOMMENDED SPARE PARTS
- 2. REFER TO SUPPLIED INSTRUCTION SHEET FOR CLEANING, LUBRICATION AND STORAGE OF APPLICATOR.
- 3. APPLY PART NUMBER 2-23419-6 LOCTITE TO THREADS OF ITEM 242.
- 4. CRIMP HEIGHT REFERENCE SETTING WAS THE SETTING USED WHEN THE APPLICATOR WAS QUALIFIED AT THE FACTORY. ADJUSTMENT MAY BE NECESSARY WHEN RUNNING APPLICATOR IN THE FIELD.
- 5. UNLESS SPECIFIED OTHERWISE TORQUE VALUES SHALL BE USED PER DOCUMENT, 101-35000.

**\*WARNING**  
 ON INSTALLATION, SET WIRE DISC TO CRIMP HEIGHT REFERENCE SETTING FOR LARGEST WIRE SIZE. CRIMP HEIGHT REFERENCE SETTINGS GREATER THAN THE VALUE SHOWN MAY CAUSE DAMAGE TO THE CRIMP TOOLING, REFER TO THE INSTRUCTION SHEET FOR PROPER SETUP AND ADJUSTMENTS.

ATLANTIC VERSION  
 Shown on sheets 1 of 4 & 2 of 4  
 (Pacific version shown on sheets 3 of 4 & 4 of 4)

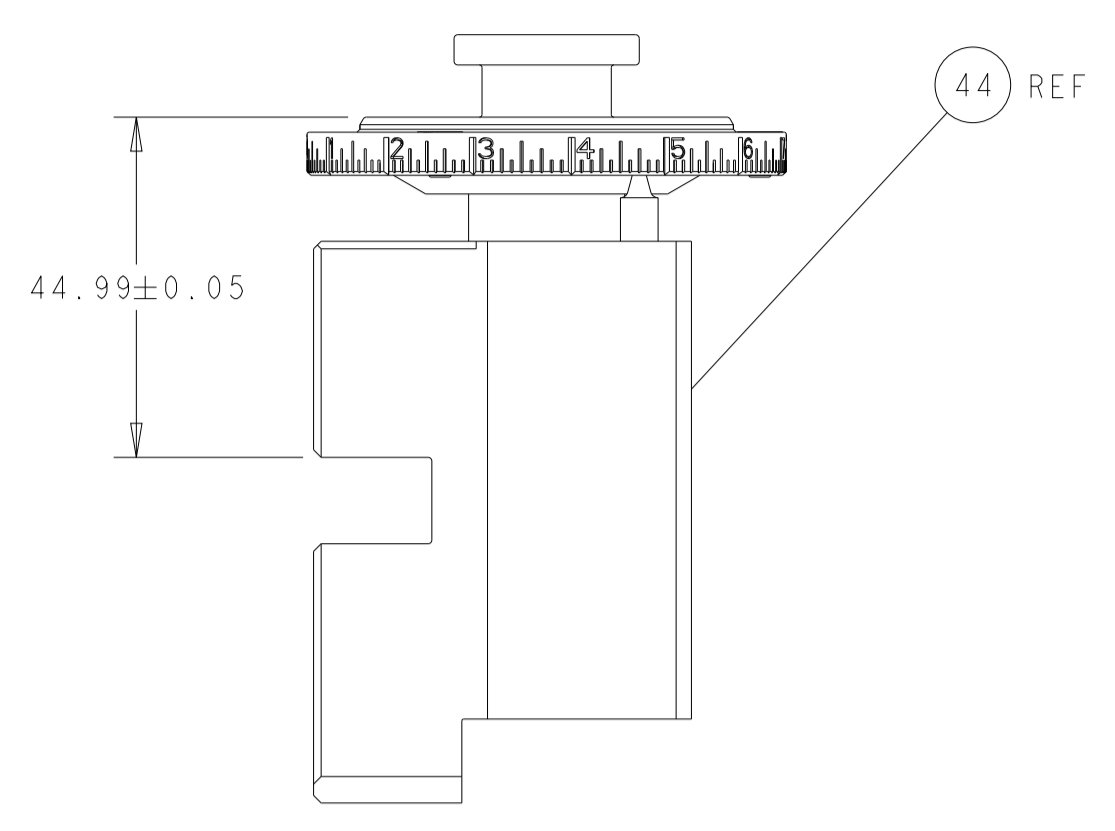
| LOC | DIST | REVISIONS |     |               |           |     |      |
|-----|------|-----------|-----|---------------|-----------|-----|------|
| A   | 66   | P         | LTN | DESCRIPTION   | DATE      | DWN | APVD |
|     |      | A         |     | RELEASED      | 28OCT2013 | KH  | UG   |
|     |      | B         |     | ECR-21-006818 | 12JUL2021 | FZ  | TE   |

|   |     |     |     |     |             |                                     |                              |   |
|---|-----|-----|-----|-----|-------------|-------------------------------------|------------------------------|---|
| - | 1   | -   | 1   | -   | 2119641-1   | FEED CAM, AIR FEED                  | 248                          |   |
| - | 1   | 1   | 1   | 1   | 2119082-9   | CAM, SNAIL, INSULATION ADJUSTMENT   | 244                          |   |
| - | 1   | 1   | 1   | 1   | 2079764-1   | WASHER, WAVE SPRING, CREST-TO-CREST | 243                          |   |
| - | 1   | 1   | 1   | 1   | 2119083-1   | RETAINER, INSULATION DIAL           | 242                          |   |
| - | -   | 1   | -   | 1   | 2119580-1   | MECHANICAL FEED ASSEMBLY            | 239                          |   |
| - | 1   | -   | 1   | -   | 2844940-3   | AIR FEED MODULE                     | 238                          |   |
| - | 1   | 1   | 1   | 1   | 1-18028-0   | WASHER, FLAT, REG M8                | 192                          |   |
| - | REF | REF | REF | REF | 994970-2    | COUNTER, MAGNETIC                   | 164                          |   |
| - | 1   | 1   | 1   | 1   | 455888-5    | SPACER, CRIMPER                     | 82                           |   |
| - | 1   | 1   | 1   | 1   | 2119791-9   | DEPRESSOR, WIRE                     | 73                           |   |
| - | 1   | 1   | 1   | 1   | 1803607-4   | DOCUMENTATION PACKAGE               | 71                           |   |
| - | 2   | 2   | 2   | 2   | 2-18032-2   | SCR, SET, FLT PNT, M3 X 10.0        | 70                           |   |
| - | 1   | 1   | 1   | 1   | 2119740-1   | TAG, IDENTIFICATION                 | 67                           |   |
| - | 2   | 2   | 2   | 2   | 2168078-1   | SCREW, DRIVE, RH, RoHS, 2 x .188    | 66                           |   |
| - | 1   | 1   | 1   | 1   | 2168083-2   | SCR, SKT HD CAP, RoHS, M4 X 8.0     | 60                           |   |
| - | 1   | 1   | 1   | 1   | 5-18022-5   | SCR, HEX HD CAP, M4 X 6.0           | 59                           |   |
| - | -   | 1   | -   | 1   | 2063961-1   | FEED FINGER                         | 58                           |   |
| - | 4   | 4   | 4   | 4   | 2168400-4   | SHCS, LOW HEAD, RoHS, M4 X 8        | 57                           |   |
| - | 2   | 2   | 2   | 2   | 1-2168083-4 | SCR, SKT HD CAP, RoHS, M4 X 5       | 56                           |   |
| - | 2   | 2   | 2   | 2   | 5018030-1   | NUT, HEX, REG, RoHS, M3             | 54                           |   |
| - | 2   | 2   | 2   | 2   | 986965-8    | NUT, LOCK, HEX, TORQUE (M4)         | 53                           |   |
| - | 1   | -   | 1   | -   | 2063961-9   | FEED FINGER                         | 51                           |   |
| - | 1   | 2   | 1   | 2   | 18023-9     | SCR, SKT HD CAP M4 X 6.0            | 49                           |   |
| - | -   | 1   | -   | 1   | 2119652-1   | FEED CAM, PRE FEED                  | 48                           |   |
| - | -   | 1   | -   | 1   | 2119653-1   | FEED CAM, POST FEED                 | 47                           |   |
| - | 1   | 1   | 1   | 1   | 2119655-5   | APPLICATOR BASIC ASSEMBLY, EF       | 46                           |   |
| - | 1   | 1   | 1   | 1   | 1803517-1   | RAM ASSEMBLY, EF ATLANTIC           | 44                           |   |
| - | 1   | 1   | 1   | 1   | 1803602-1   | SCR, BHSC, RoHS (M8 X 25)           | 41                           |   |
| - | 8   | 8   | 8   | 8   | 1-18028-2   | WASHER, FLAT, REG M4                | 33                           |   |
| - | 2   | 2   | 2   | 2   | 2168083-8   | SCR, SKT HD CAP, RoHS, M4 X 16      | 31                           |   |
| - | 2   | 2   | 2   | 2   | 2168083-2   | SCR, SKT HD CAP, RoHS, M4 X 8.0     | 29                           |   |
| - | 1   | 1   | 1   | 1   | 240639-1    | STRIPPER (MACHINING)                | 27                           |   |
| - | 2   | 2   | 2   | 2   | 1-2168083-5 | SCR, SKT HD CAP, RoHS, M4 X 30      | 25                           |   |
| - | 1   | 1   | 1   | 1   | 1752371-2   | PLATE, STRIP GUIDE                  | 24                           |   |
| - | 2   | 2   | 2   | 2   | 2-22281-3   | SPRING, COMPRESSION                 | 22                           |   |
| - | 1   | 1   | 1   | 1   | 1803292-4   | DRAG                                | 20                           |   |
| - | 1   | 1   | 1   | 1   | 1901696-8   | STRIP GUIDE, REAR                   | 19                           |   |
| - | 1   | 1   | 1   | 1   | 1901695-8   | STRIP GUIDE, FRONT                  | 18                           |   |
| - | 4   | 4   | 4   | 4   | 1-2079383-1 | SCR, BHSC, RoHS (M6 X 12)           | 17                           |   |
| - | 1   | 1   | 1   | 1   | 691901-2    | REAR SHEAR PLATE, REVERSIBLE        | 11                           |   |
| - | 2   | 2   | 2   | 2   | 240645-2    | SPACER, SHEAR PLATE                 | 10                           |   |
| - | 1   | 1   | 1   | 1   | 240642-1    | PLATE, FRONT SHEAR                  | 9                            |   |
| - | 1   | 2   | 2   | 1   | 1           | 3-1803000-4                         | ANVIL, COMBINATION, END FEED | 8 |
| - | 1   | 1   | 1   | 1   | 2-691157-4  | BLADE, SHEAR                        | 7                            |   |
| - | -   | -   | -   | -   | -           | -                                   | 6                            |   |
| - | 1   | 1   | 1   | 1   | 3-240641-8  | SPACER                              | 5                            |   |
| - | 1   | 1   | 1   | 1   | 238011-7    | BLOCK, CRIMPER SPACER               | 4                            |   |
| - | 1   | 2   | 2   | 1   | 1           | 2-1803017-2                         | CRIMPER, INSULATION F        | 3 |
| - | 1   | 1   | 1   | 1   | 455888-3    | SPACER, CRIMPER                     | 2                            |   |
| - | 1   | 2   | 2   | 1   | 1           | 456401-5                            | CRIMPER, WIRE .042 F PREMIUM | 1 |
| - | 77  | 72  | 71  | 2   | -1          | PART NO                             | ITEM NO                      |   |

| DIMENSIONS: |          | TOLERANCES UNLESS OTHERWISE SPECIFIED: |         | MATERIAL: |         |
|-------------|----------|----------------------------------------|---------|-----------|---------|
| mm          | 0 PLC ±  | 1 PLC ±                                | 2 PLC ± | 3 PLC ±   | 4 PLC ± |
|             | ANGLES ± | FINISH ±                               |         |           |         |

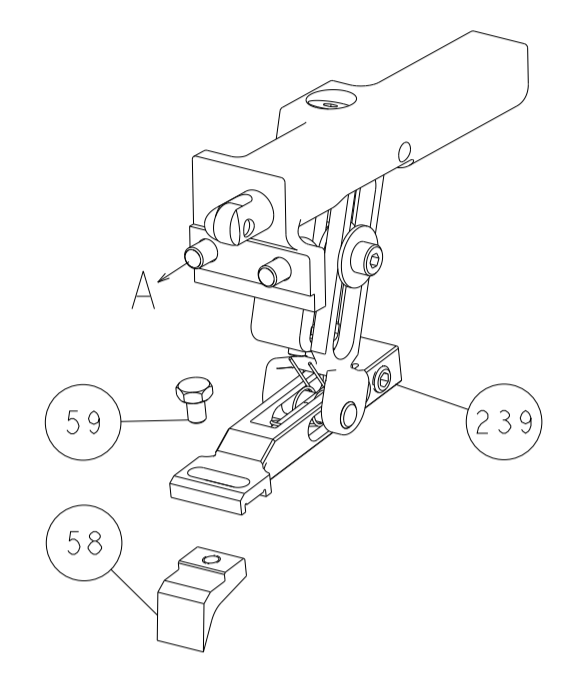
|                                        |           |            |                                              |
|----------------------------------------|-----------|------------|----------------------------------------------|
| DWN                                    | H. HUANG  | 04SEP2013  | TE Connectivity<br>Harrisburg, PA 17105-3608 |
| CHK                                    | L. ZHANG  | 04SEP2013  |                                              |
| APVD                                   | J. GUO    | 04SEP2013  | NAME                                         |
| PRODUCT SPEC                           |           |            | Ocean End Feed Applicator                    |
| APPLICATION SPEC                       |           |            |                                              |
| SIZE                                   | CAGE CODE | DRAWING NO | RESTRICTED TO                                |
| A1                                     | 00779     | 2150360    |                                              |
| Customer Accessible Production Drawing |           |            | SCALE 1:1 SHEET 1 OF 4 REV B                 |

| LOC | DIST | REVISIONS |     |             |      |     |      |
|-----|------|-----------|-----|-------------|------|-----|------|
| A   | 66   | P         | LTM | DESCRIPTION | DATE | OWN | APVD |
|     |      | -         |     | SEE SHEET 1 |      |     |      |

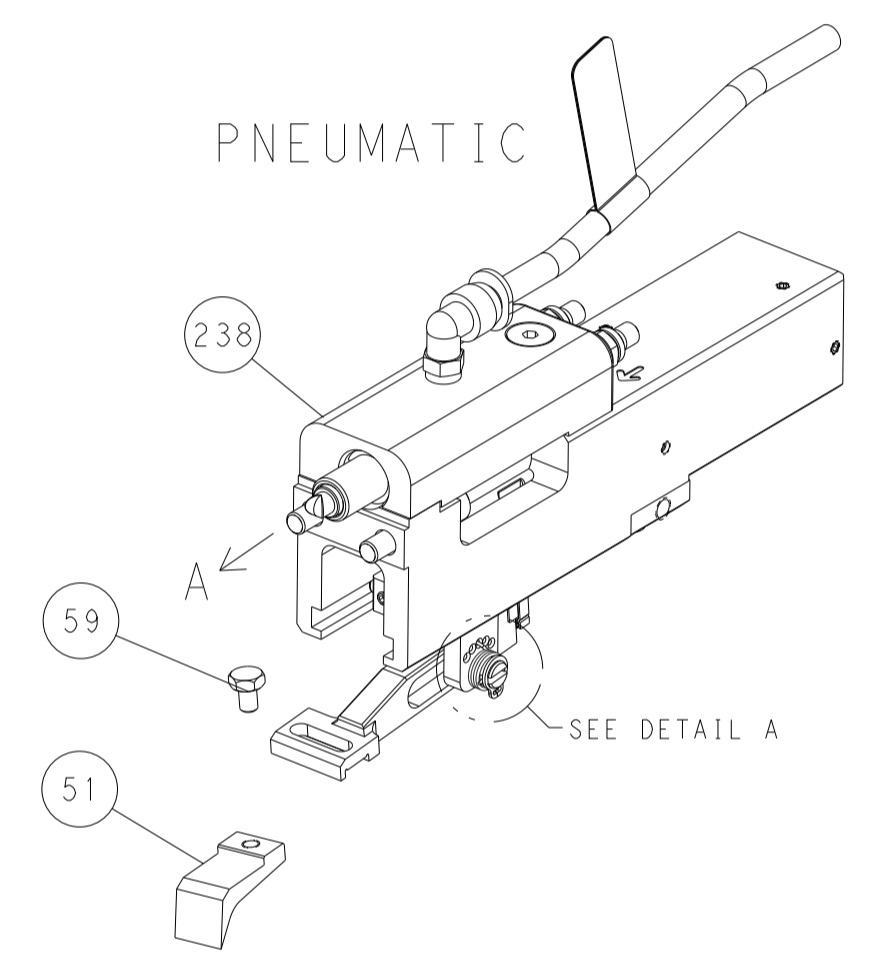


RAM SET-UP

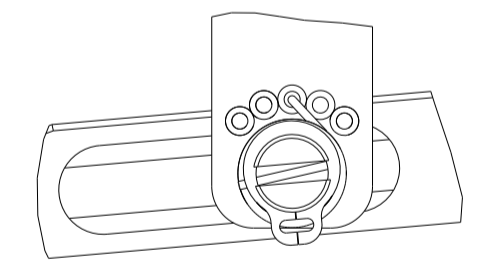
# FEED TYPE MECHANICAL



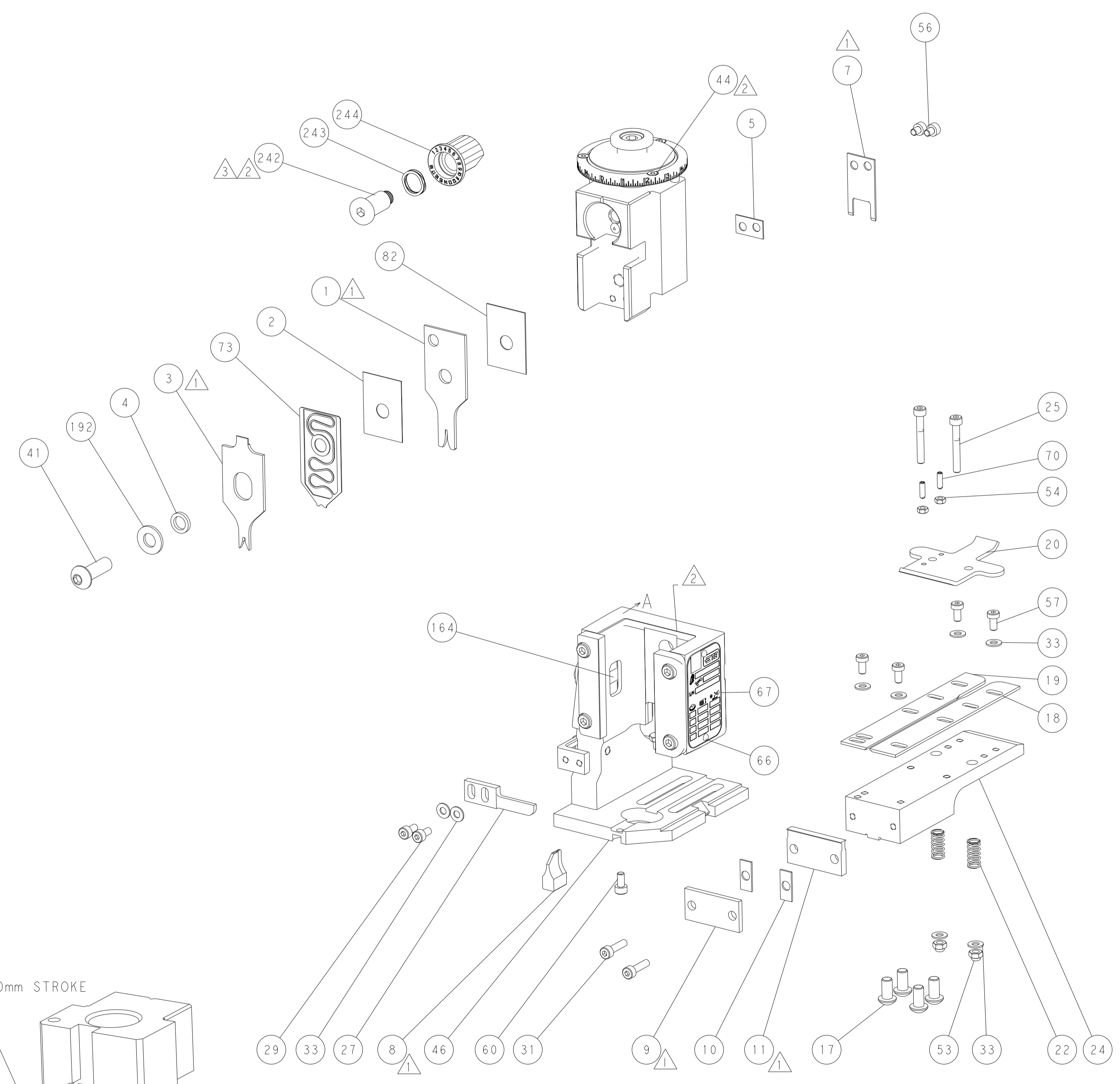
# PNEUMATIC



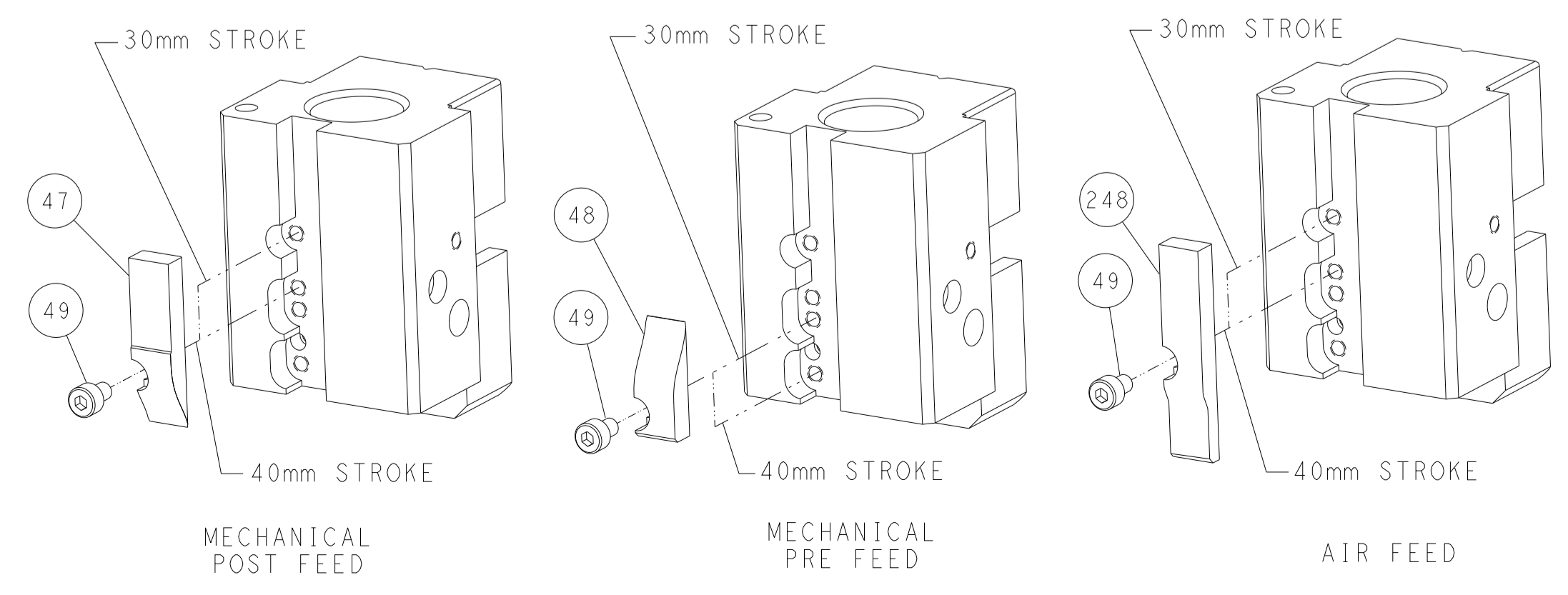
# FEED SPRING SETTING POSITION



DETAIL A



# CAM POSITIONS

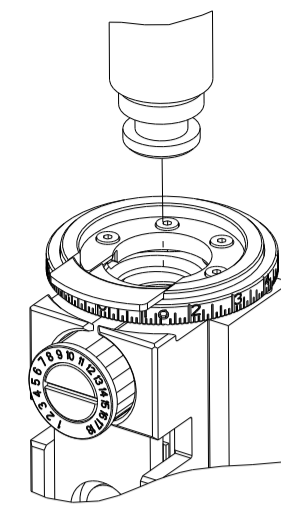


**ATLANTIC VERSION**  
 Shown on sheets 1 of 4 & 2 of 4  
 (Pacific version shown on sheets 3 of 4 & 4 of 4)

|                                                                                                                                                                                                                                                                                                                                                                                                     |  |                                                                                                     |                                              |
|-----------------------------------------------------------------------------------------------------------------------------------------------------------------------------------------------------------------------------------------------------------------------------------------------------------------------------------------------------------------------------------------------------|--|-----------------------------------------------------------------------------------------------------|----------------------------------------------|
| <small>THIS DRAWING IS A CONTROLLED DOCUMENT FROM TYCO ELECTRONICS CORPORATION. IT IS THE PROPERTY OF TYCO ELECTRONICS CORPORATION AND IS NOT TO BE REPRODUCED OR TRANSMITTED IN ANY FORM OR BY ANY MEANS, ELECTRONIC OR MECHANICAL, INCLUDING PHOTOCOPYING, RECORDING, OR BY ANY INFORMATION STORAGE AND RETRIEVAL SYSTEM, WITHOUT THE WRITTEN PERMISSION OF TYCO ELECTRONICS CORPORATION.</small> |  | DWN: K. HUANG 04SEP2013<br>CHK: L. ZHANG 04SEP2013<br>APVD: J. GUO 04SEP2013                        | TE Connectivity<br>Harrisburg, PA 17105-3608 |
| DIMENSIONS: mm<br>TOLERANCES UNLESS OTHERWISE SPECIFIED:<br>0 PLC ±.<br>1 PLC ±.<br>2 PLC ±.<br>3 PLC ±.<br>4 PLC ±.<br>ANGLES FINISH ±.<br>MATERIAL:                                                                                                                                                                                                                                               |  | NAME: Ocean End Feed Applicator<br>SIZE: A1<br>CAGE CODE: 00779<br>DRAWING NO: C=2150360<br>WEIGHT: | RESTRICTED TO:                               |
| CUSTOMER ACCESSIBLE PRODUCTION DRAWING                                                                                                                                                                                                                                                                                                                                                              |  | SCALE: 1:1                                                                                          | SHEET 2 OF 4 REV B                           |

| PART NUMBER | REVISION | DESCRIPTION              | FEED TYPE  |
|-------------|----------|--------------------------|------------|
| 2-2150360-1 | B        | FINE CRIMP HEIGHT ADJUST | MECHANICAL |
| 2-2150360-2 | B        | FINE CRIMP HEIGHT ADJUST | PNEUMATIC  |
| 7-2150360-7 | A        | CRIMP TOOLING KIT        | -          |

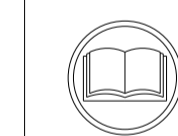
PACIFIC VERSION TERMINATOR  
INTERFACE ADAPTER



| APPLICATOR DATA                      |                |      |
|--------------------------------------|----------------|------|
| CRIMP                                | SIZE           | TYPE |
| WIRE                                 | 1.07 mm [.042] | F    |
| INSUL                                | 1.78 mm [.070] | F    |
| APPLICATOR INSTRUCTIONS<br>408-35043 |                |      |

| TERMINAL DATA: TE TERMINAL                       |                         | TE CRIMP SPECIFICATION                                    |             |
|--------------------------------------------------|-------------------------|-----------------------------------------------------------|-------------|
| TERMINAL NAME: RING TONGUE                       |                         |                                                           |             |
| WIRE STRIP LENGTH<br>2.30-2.90 mm [.091-.114 IN] |                         | INSULATION DIAMETER RANGE<br>Ø0.76-1.27 mm [.030-.050 IN] |             |
| TERMINAL APPLICATION SPECIFICATION<br>114-2084   |                         |                                                           |             |
| TERMINALS APPLIED                                |                         |                                                           |             |
| TE TERMINAL<br>160562-1                          | TE TERMINAL<br>160562-2 | TE TERMINAL                                               | TE TERMINAL |

| WIRE SIZE | CRIMP HEIGHT<br>mm [INCH]   | CRIMP HEIGHT<br>REFERENCE SETTING |
|-----------|-----------------------------|-----------------------------------|
| 26 AWG    | 0.96+/-0.000 [.038+/- .000] | 4.8                               |
| 28 AWG    | 0.92+/-0.000 [.036+/- .000] | 5.2                               |



- 1 RECOMMENDED SPARE PARTS
- 2 REFER TO SUPPLIED INSTRUCTION SHEET FOR CLEANING, LUBRICATION AND STORAGE OF APPLICATOR.
- 3 APPLY PART NUMBER 2-23419-6 LOCTITE TO THREADS OF ITEM 242.
- 4 CRIMP HEIGHT REFERENCE SETTING WAS THE SETTING USED WHEN THE APPLICATOR WAS QUALIFIED AT THE FACTORY. ADJUSTMENT MAY BE NECESSARY WHEN RUNNING APPLICATOR IN THE FIELD.
5. UNLESS SPECIFIED OTHERWISE TORQUE VALUES SHALL BE USED PER DOCUMENT, 101-35000.

**\*WARNING**  
ON INSTALLATION, SET WIRE DISC TO CRIMP HEIGHT REFERENCE SETTING FOR LARGEST WIRE SIZE. CRIMP HEIGHT REFERENCE SETTINGS GREATER THAN THE VALUE SHOWN MAY CAUSE DAMAGE TO THE CRIMP TOOLING, REFER TO THE INSTRUCTION SHEET FOR PROPER SETUP AND ADJUSTMENTS.

PACIFIC VERSION  
Shown on sheets 3 of 4 & 4 of 4  
(Atlantic version shown on sheets 1 of 4 & 2 of 4)

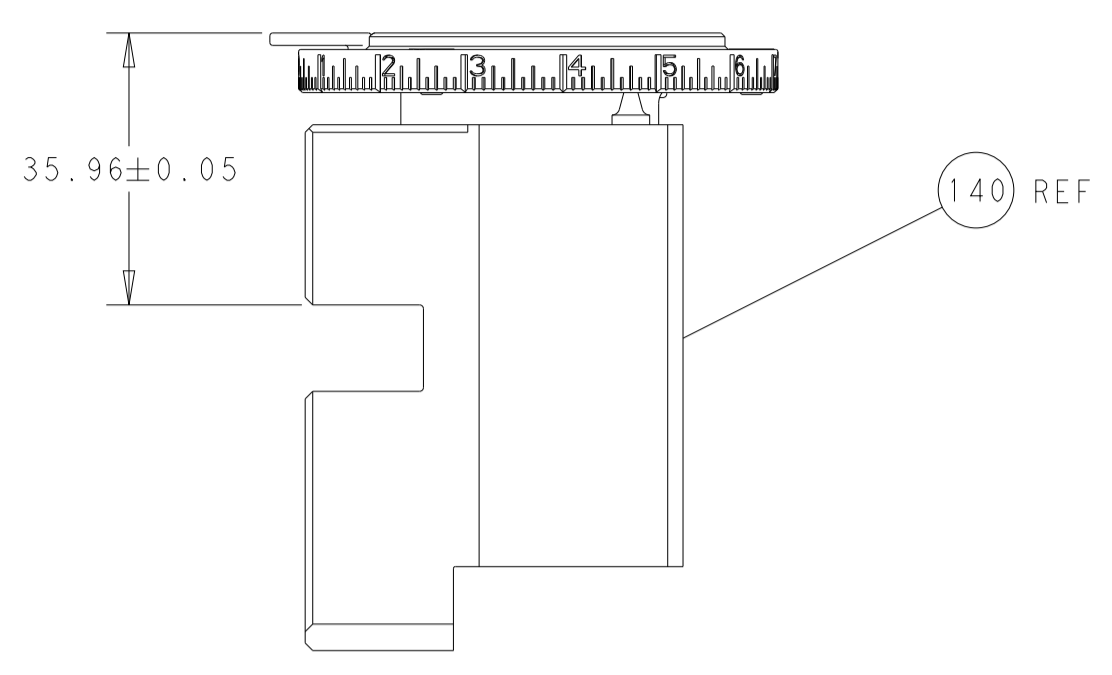
| LOC | DIST | REVISIONS |     |             |      |     |      |
|-----|------|-----------|-----|-------------|------|-----|------|
| A   | 66   | P         | LTN | DESCRIPTION | DATE | OWN | APVD |
| -   | -    | -         | -   | SEE SHEET 1 | -    | -   | -    |

|   |     |     |             |                                     |             |         |
|---|-----|-----|-------------|-------------------------------------|-------------|---------|
| - | 1   | 1   | 2119082-9   | CAM, SNAIL, INSULATION ADJUSTMENT   | 244         |         |
| - | 1   | 1   | 2079764-1   | WASHER, WAVE SPRING, CREST-TO-CREST | 243         |         |
| - | 1   | 1   | 2119083-1   | RETAINER, INSULATION DIAL           | 242         |         |
| - | -   | 1   | 2119580-1   | MECHANICAL FEED ASSEMBLY            | 239         |         |
| - | 1   | -   | 2844940-3   | AIR FEED MODULE                     | 238         |         |
| - | 1   | 1   | 1-18028-0   | WASHER, FLAT, REG M8                | 192         |         |
| - | 4   | 4   | 2079383-9   | SCR, BHSC, RoHS (M6 X 20)           | 186         |         |
| - | REF | REF | 994970-2    | COUNTER, MAGNETIC                   | 164         |         |
| - | 1   | -   | 2119641-2   | FEED CAM, AIR FEED                  | 152         |         |
| - | 1   | 1   | 2168083-8   | SCR, SKT HD CAP, RoHS, M4 X 16      | 144         |         |
| - | -   | 1   | 2119653-2   | FEED CAM, POST FEED                 | 142         |         |
| - | 1   | 1   | 2119655-6   | APPLICATOR BASIC ASSEMBLY, EF       | 141         |         |
| - | 1   | 1   | 1803518-1   | RAM ASSEMBLY, EF PACIFIC            | 140         |         |
| - | 1   | 1   | 455888-5    | SPACER, CRIMPER                     | 82          |         |
| - | 1   | 1   | 2119791-9   | DEPRESSOR, WIRE                     | 73          |         |
| - | 1   | 1   | 1803607-4   | DOCUMENTATION PACKAGE               | 71          |         |
| - | 2   | 2   | 2-18032-2   | SCR, SET, FLT PNT, M3 X 10.0        | 70          |         |
| - | 1   | 1   | 2119740-1   | TAG, IDENTIFICATION                 | 67          |         |
| - | 2   | 2   | 2168078-1   | SCREW, DRIVE, RH, RoHS, 2 x .188    | 66          |         |
| - | 1   | 1   | 5-18022-5   | SCR, HEX HD CAP, M4 X 6.0           | 59          |         |
| - | -   | 1   | 2063961-1   | FEED FINGER                         | 58          |         |
| - | 4   | 4   | 2168400-4   | SHCS, LOW HEAD, RoHS, M4 X 8        | 57          |         |
| - | 2   | 2   | 1-2168083-4 | SCR, SKT HD CAP, RoHS, M4 X 5       | 56          |         |
| - | 2   | 2   | 5018030-1   | NUT, HEX, REG, RoHS, M3             | 54          |         |
| - | 2   | 2   | 986965-8    | NUT, LOCK, HEX, TORQUE (M4)         | 53          |         |
| - | 1   | -   | 2063961-9   | FEED FINGER                         | 51          |         |
| - | 1   | 2   | 18023-9     | SCR, SKT HD CAP M4 X 6.0            | 49          |         |
| - | -   | 1   | 2119652-1   | FEED CAM, PRE FEED                  | 48          |         |
| - | 1   | 1   | 1803602-1   | SCR, BHSC, RoHS (M8 X 25)           | 41          |         |
| - | 8   | 8   | 1-18028-2   | WASHER, FLAT, REG M4                | 33          |         |
| - | 2   | 2   | 2168083-8   | SCR, SKT HD CAP, RoHS, M4 X 16      | 31          |         |
| - | 2   | 2   | 2168083-2   | SCR, SKT HD CAP, RoHS, M4 X 8.0     | 29          |         |
| - | 1   | 1   | 240639-1    | STRIPPER (MACHINING)                | 27          |         |
| - | 2   | 2   | 1-2168083-5 | SCR, SKT HD CAP, RoHS, M4 X 30      | 25          |         |
| - | 1   | 1   | 1752371-2   | PLATE, STRIP GUIDE                  | 24          |         |
| - | 2   | 2   | 2-22281-3   | SPRING, COMPRESSION                 | 22          |         |
| - | 1   | 1   | 1803292-4   | DRAG                                | 20          |         |
| - | 1   | 1   | 1901696-8   | STRIP GUIDE, REAR                   | 19          |         |
| - | 1   | 1   | 1901695-8   | STRIP GUIDE, FRONT                  | 18          |         |
| - | 1   | 1   | 691901-2    | REAR SHEAR PLATE, REVERSIBLE        | 11          |         |
| - | 2   | 2   | 240645-2    | SPACER, SHEAR PLATE                 | 10          |         |
| - | 1   | 1   | 240642-1    | PLATE, FRONT SHEAR                  | 9           |         |
| - | 1   | 1   | 3-1803000-4 | ANVIL, COMBINATION, END FEED        | 8           |         |
| - | 1   | 1   | 2-691157-4  | BLADE, SHEAR                        | 7           |         |
| - | -   | -   | -           | -                                   | 6           |         |
| - | 1   | 1   | 3-240641-8  | SPACER                              | 5           |         |
| - | 1   | 1   | 238011-7    | BLOCK, CRIMPER SPACER               | 4           |         |
| - | 1   | 1   | 2-1803017-2 | CRIMPER, INSULATION F               | 3           |         |
| - | 1   | 1   | 455888-3    | SPACER, CRIMPER                     | 2           |         |
| - | 1   | 1   | 456401-5    | CRIMPER, WIRE .042 F PREMIUM        | 1           |         |
| - | 77  | 22  | 21          | PART NO                             | DESCRIPTION | ITEM NO |

| DIMENSIONS: |          | TOLERANCES UNLESS OTHERWISE SPECIFIED: |         | MATERIAL: |         |
|-------------|----------|----------------------------------------|---------|-----------|---------|
| mm          | 0 PLC ±  | 1 PLC ±                                | 2 PLC ± | 3 PLC ±   | 4 PLC ± |
|             | ANGLES ± | FINISH ±                               |         |           |         |

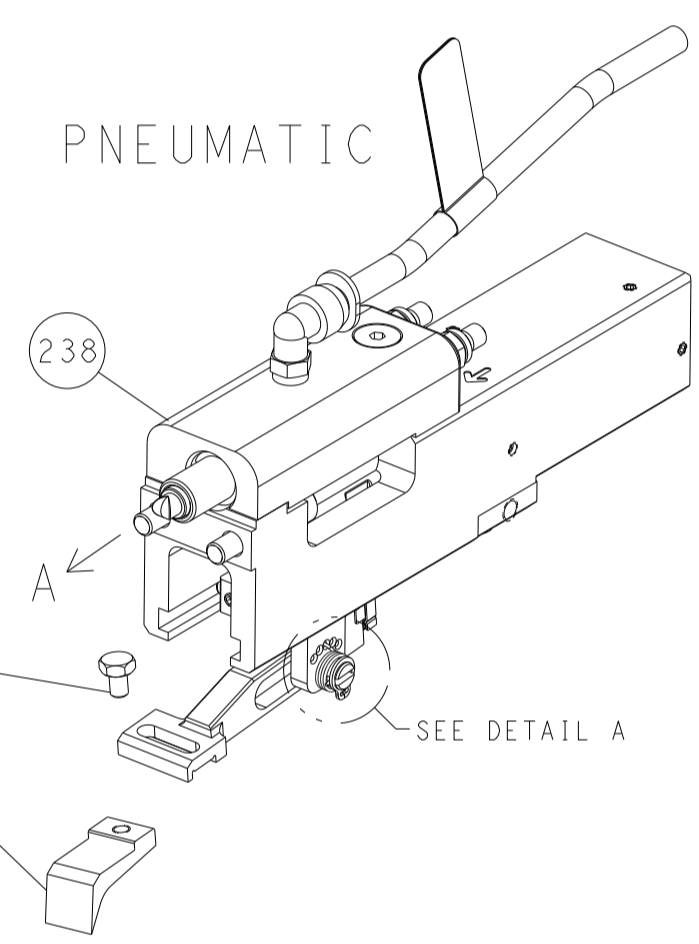
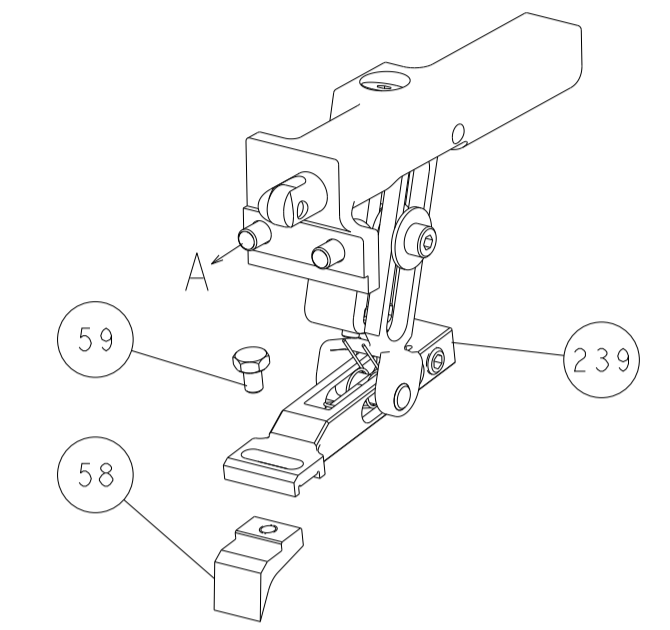
|                  |                                                                     |           |      |                           |           |
|------------------|---------------------------------------------------------------------|-----------|------|---------------------------|-----------|
| OWN              | H. HUANG                                                            | 04SEP2013 | CHK  | L. ZHANG                  | 04SEP2013 |
| APVD             | J. GUO                                                              | 04SEP2013 | NAME | Ocean End Feed Applicator |           |
| PRODUCT SPEC     | SIZE CAGE CODE DRAWING NO RESTRICTED TO                             |           |      |                           |           |
| APPLICATION SPEC | A1 00779 ©=2150360                                                  |           |      |                           |           |
| WEIGHT           | Customer Accessible Production Drawing SCALE 1:1 SHEET 3 OF 4 REV B |           |      |                           |           |

| LOC | DIST | REVISIONS   |      |     |      |
|-----|------|-------------|------|-----|------|
| P   | LTN  | DESCRIPTION | DATE | OWN | APVD |
| A   | 66   | SEE SHEET 1 |      |     |      |

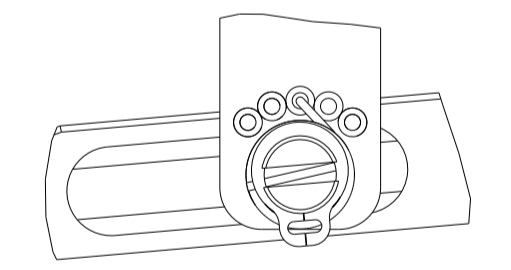


RAM SET-UP

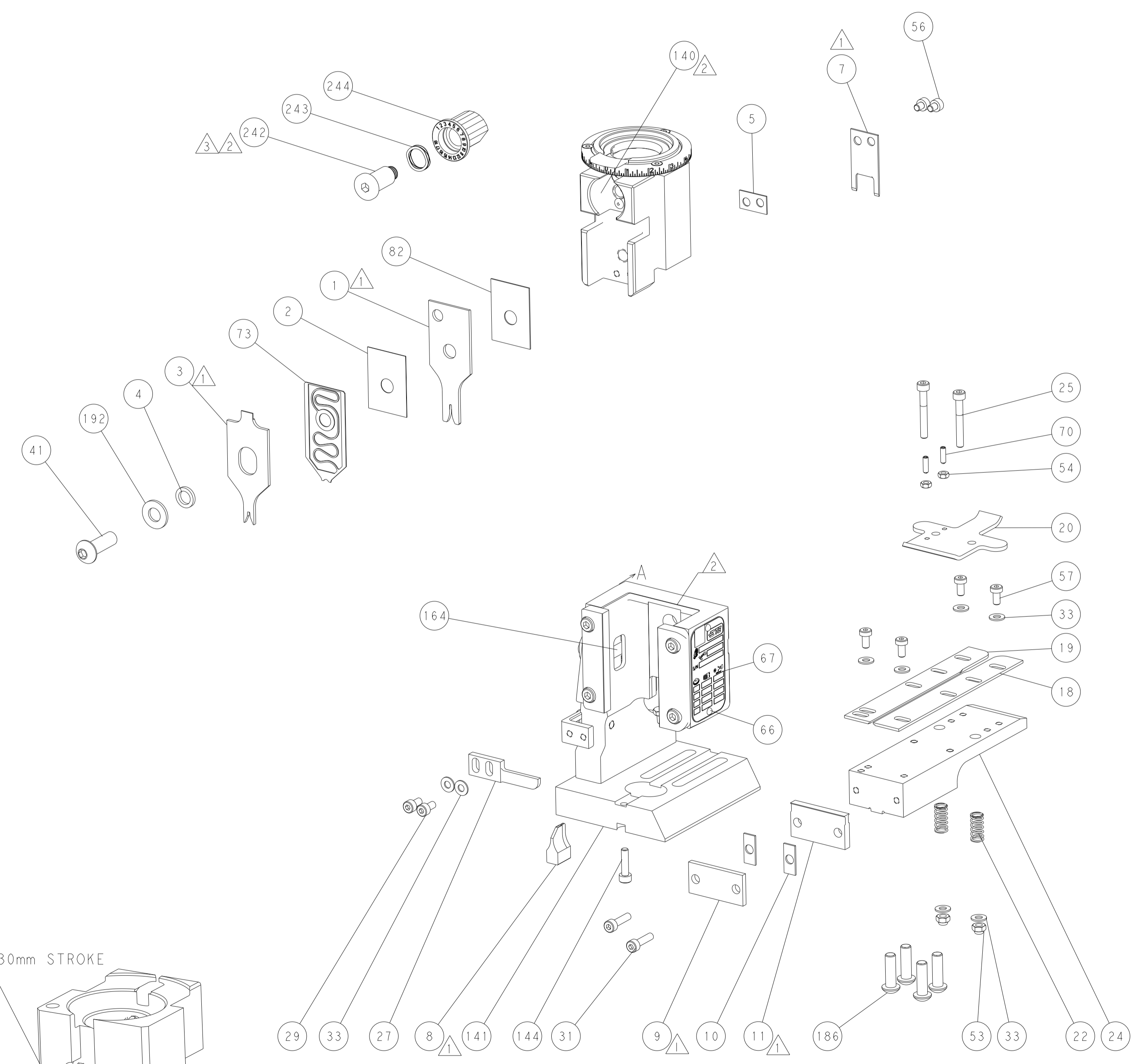
FEED TYPE  
MECHANICAL



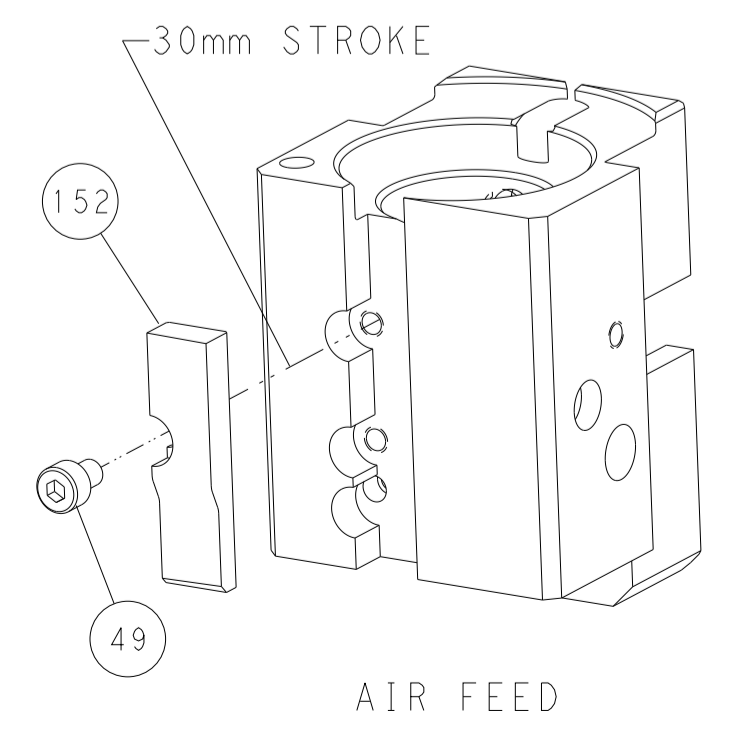
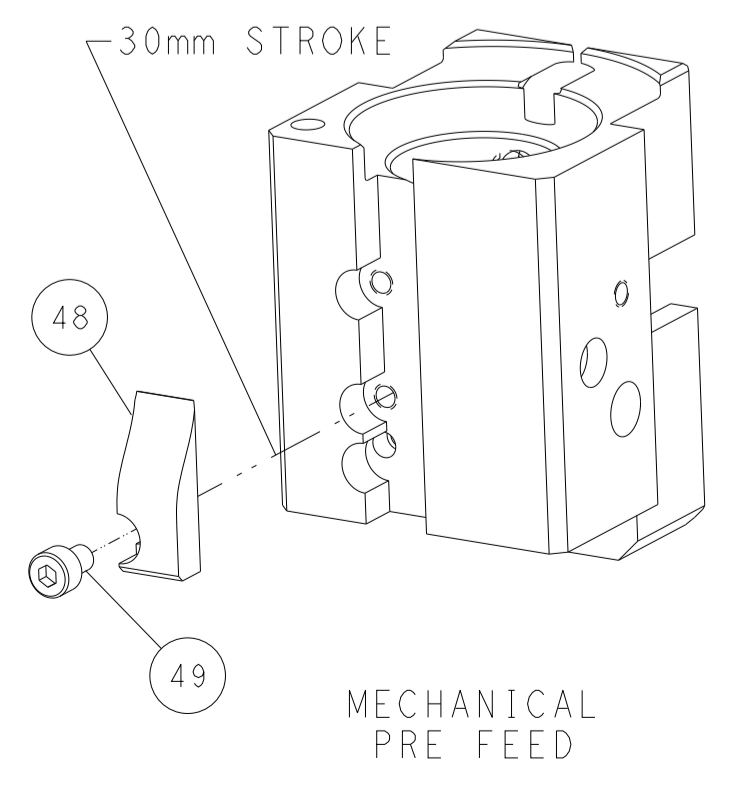
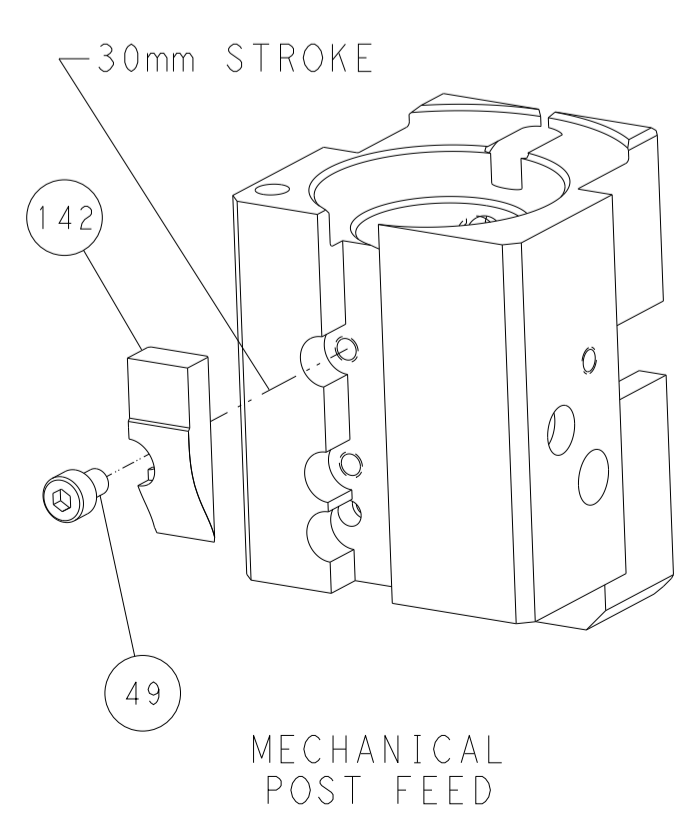
FEED SPRING  
SETTING POSITION



DETAIL A



CAM POSITIONS



PACIFIC VERSION  
 Shown on sheets 3 of 4 & 4 of 4  
 (Atlantic version shown on sheets 1 of 4 & 2 of 4)

|             |         |                                        |         |                         |         |                         |        |                        |                  |                              |                  |
|-------------|---------|----------------------------------------|---------|-------------------------|---------|-------------------------|--------|------------------------|------------------|------------------------------|------------------|
| DIMENSIONS: |         | TOLERANCES UNLESS OTHERWISE SPECIFIED: |         | OWN: K. HUANG 04SEP2013 |         | CHK: L. ZHANG 04SEP2013 |        | APVD: J. GUO 04SEP2013 |                  | NAME: Ocean End Feed Applier |                  |
| mm          | 0 PLC ± | 1 PLC ±                                | 2 PLC ± | 3 PLC ±                 | 4 PLC ± | ANGLES ±                | FINISH | SIZE: A1               | CAGE CODE: 00779 | DRAWING NO: C-2150360        | RESTRICTED TO: - |
| MATERIAL:   |         |                                        |         |                         |         |                         |        | SCALE: 1:1             | SHEET: 4         | OF: 4                        | REV: B           |

# Mouser Electronics

Authorized Distributor

Click to View Pricing, Inventory, Delivery & Lifecycle Information:

[TE Connectivity:](#)

[2150360-2](#)