

printed on 4 Jan 2022 16:33 (China Standard Time) from TE152312

D

A

4

3

2

1

THIS DRAWING IS UNPUBLISHED.

RELEASED FOR PUBLICATION

20

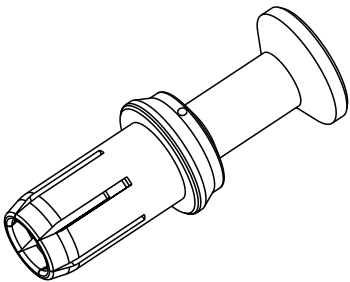
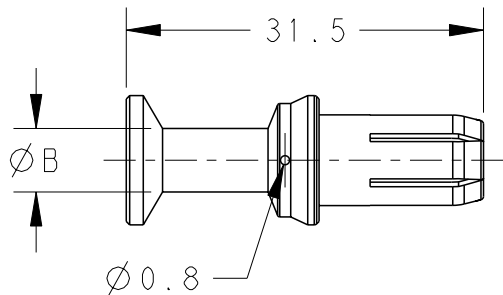
© COPYRIGHT 20

BY -

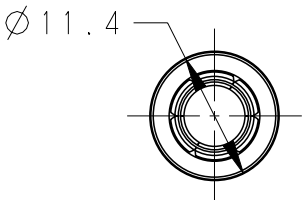
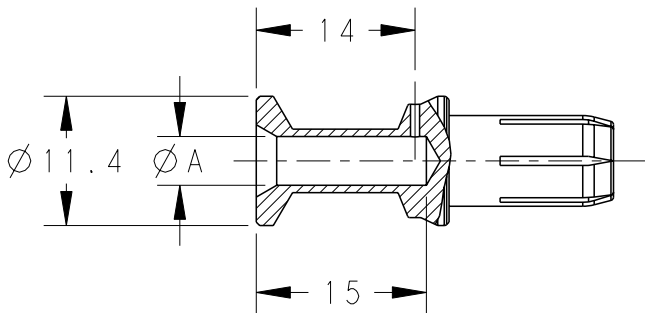
ALL RIGHTS RESERVED.

REVISIONS

P	LTR	DESCRIPTION	DATE	DWN	APVD
	A	INITIAL	15MAY2015	DW	CW
	A1	ECR-16-015170	11JAN2017	YC	CW
	B	ECR-19-018087	22NOV2019	YC	CW
	B1	ECR-21-125167	4JAN2022	GY	CW

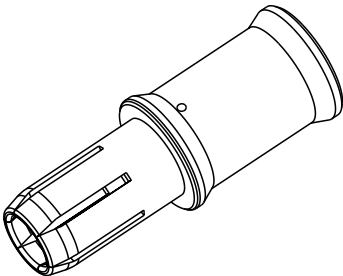
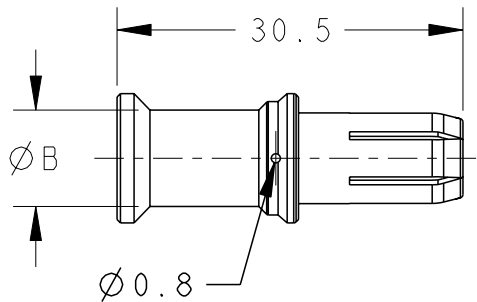


TYPE 1:  
CSF-10 T2400002100-000  
类型 1:  
CSF-10 T2400002100-000

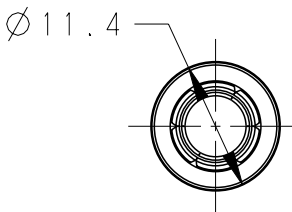
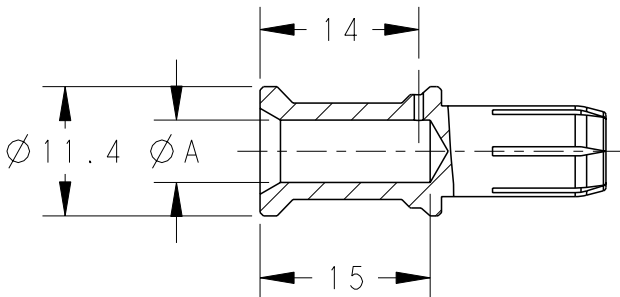



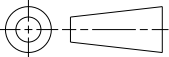
NOTES:  
1. TECHNICAL CHARACTERISTICS:  
CONTACT MATERIAL: BRASS  
SURFACE PLATING:  
SILVER PLATING:  $\geq 2\mu\text{m}$   
CONTACT RESISTANCE:  $\leq 1.5\text{m}\Omega$   
WIRE RANGE: 6.0-25mm<sup>2</sup>

注释:  
1. 技术参数:  
公针材料: 黄铜  
表面电镀:  
镀银:  $\geq 2\mu\text{m}$   
接触电阻:  $\leq 1.5\text{m}\Omega$   
接线范围: 6.0-25mm<sup>2</sup>



TYPE 2:  
CSF-16 T2400002160-000  
类型 2:  
CSF-16 T2400002160-000



THIS DRAWING IS A CONTROLLED DOCUMENT.		DWN DAVID WANG 15MAY2015	 TE Connectivity		
DIMENSIONS: mm		CHK CHRIS WANG 15MAY2015			
		APVD XIANG XU 15MAY2015			
TOLERANCES UNLESS OTHERWISE SPECIFIED:		PRODUCT SPEC 108-137059			
0 PLC ± 1 PLC ± 2 PLC ± 3 PLC ± 4 PLC ± ANGLES ±		APPLICATION SPEC 114-137059	NAME CSF SS SOCKET CONTACT		
MATERIAL -		WEIGHT -	SIZE A3	CAGE CODE 00779	RESTRICTED TO -
FINISH -		CUSTOMER DRAWING	SCALE 3:2	SHEET 1 OF 2	REV B1

THIS DRAWING IS UNPUBLISHED.

RELEASED FOR PUBLICATION

20

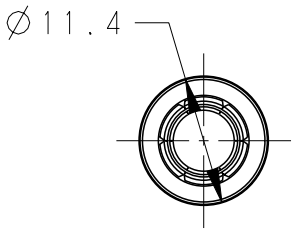
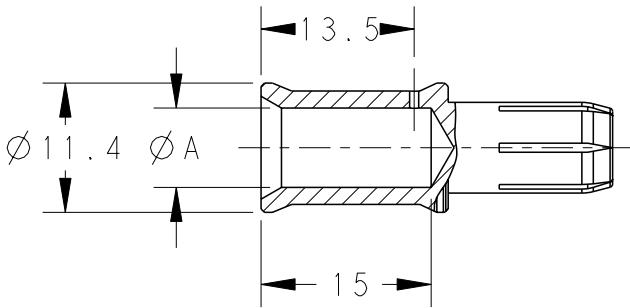
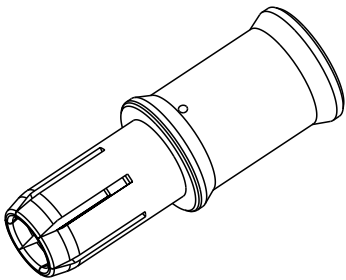
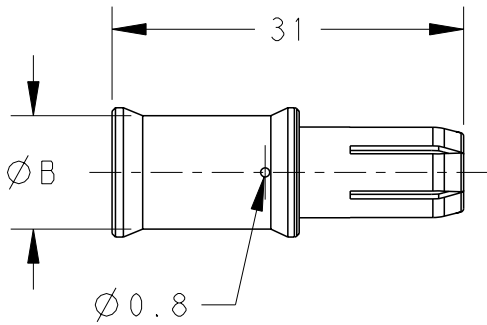
© COPYRIGHT 20

BY -

ALL RIGHTS RESERVED.

REVISIONS

P	LTR	DESCRIPTION	DATE	DWN	APVD
	-	SEE SHEET 1	-	-	-



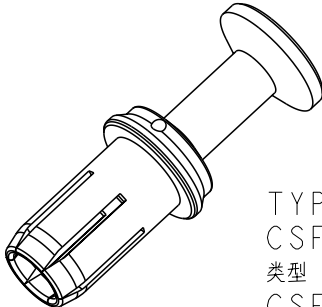
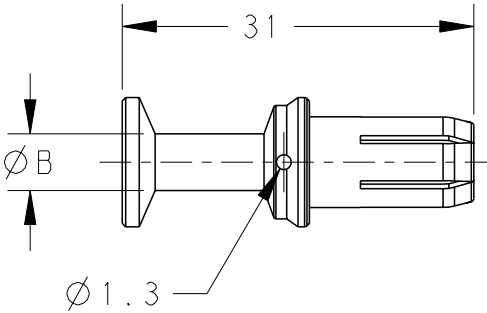
TYPE 3:  
CSF-25 T2400002250-000  
类型 3:  
CSF-25 T2400002250-000

NOTES:

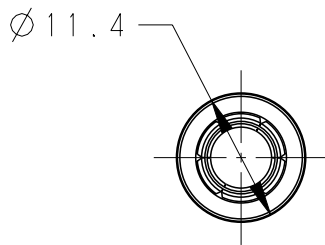
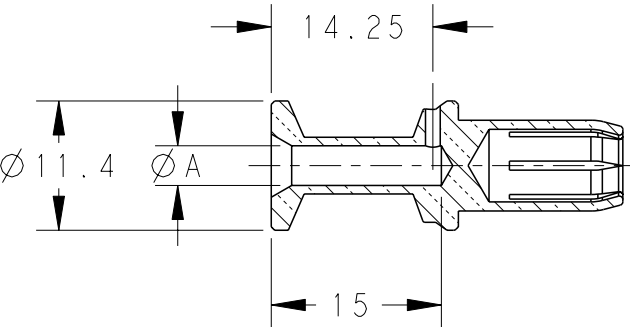
SEE SHEET 1.

注释:

见SHEET 1.



TYPE 4:  
CSF-6.0 T2400002060-000  
类型 4:  
CSF-6.0 T2400002060-000



T2400002100-000	CSF-10	CSF-10,SILVER PLATING / SS母针 10mm <sup>2</sup> , 镀银	4.3	5.6	10	15	TYPE 1
T2400002160-000	CSF-16	CSF-16,SILVER PLATING / SS母针 16mm <sup>2</sup> , 镀银	5.5	8.5	16		TYPE 2
T2400002250-000	CSF-25	CSF-25,SILVER PLATING / SS母针 25mm <sup>2</sup> , 镀银	7.0	10.0	25		TYPE 3
T2400002060-000	CSF-6.0	CSF-6.0,SILVER PLATING / SS母针 6.0mm <sup>2</sup> , 镀银	3.5	5.0	6		TYPE 4
PART NUMBER 料号	PART DESCRIPTION 描述		ØA	ØB	WIRE GAUGE 线规(mm <sup>2</sup> )	STRIPPING LENGTH(mm) 剥线长度	TYPE 类型

THIS DRAWING IS A CONTROLLED DOCUMENT.

DWN 15MAY2015  
DAVID WANG  
CHK 15MAY2015  
CHRIS WANG  
APVD 15MAY2015  
XIANG XU



TE Connectivity

NAME  
CSF  
SS SOCKET CONTACT

DIMENSIONS:	TOLERANCES UNLESS OTHERWISE SPECIFIED:
mm	
	0 PLC ±-
	1 PLC ±-
	2 PLC ±-
	3 PLC ±-
	4 PLC ±-
	ANGLES ±-
MATERIAL	FINISH
-	-
-	-

PRODUCT SPEC	108-137059
APPLICATION SPEC	114-137059
WEIGHT	-
CUSTOMER DRAWING	

SIZE	CAGE CODE	DRAWING NO	RESTRICTED TO
A3	00779	G-T2400002XX0000	-
SCALE 3:2		SHEET 2 OF 2	REV B1

# Mouser Electronics

Authorized Distributor

Click to View Pricing, Inventory, Delivery & Lifecycle Information:

[TE Connectivity:](#)

[T2400002100-000](#)