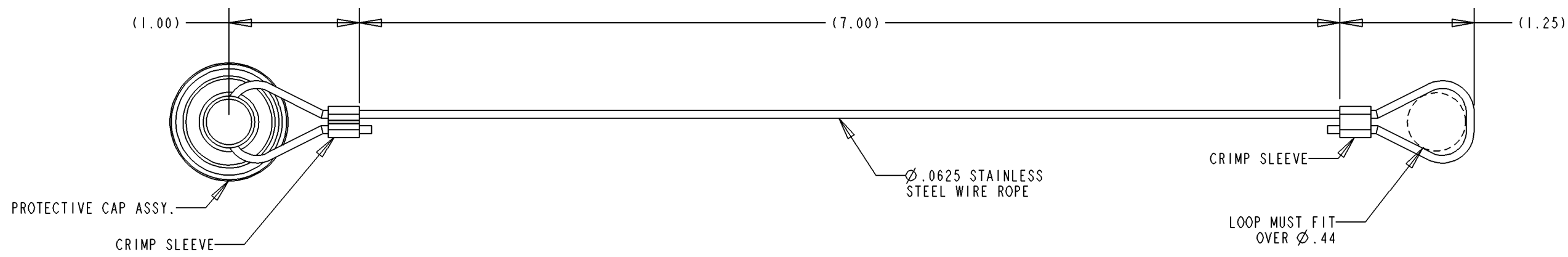
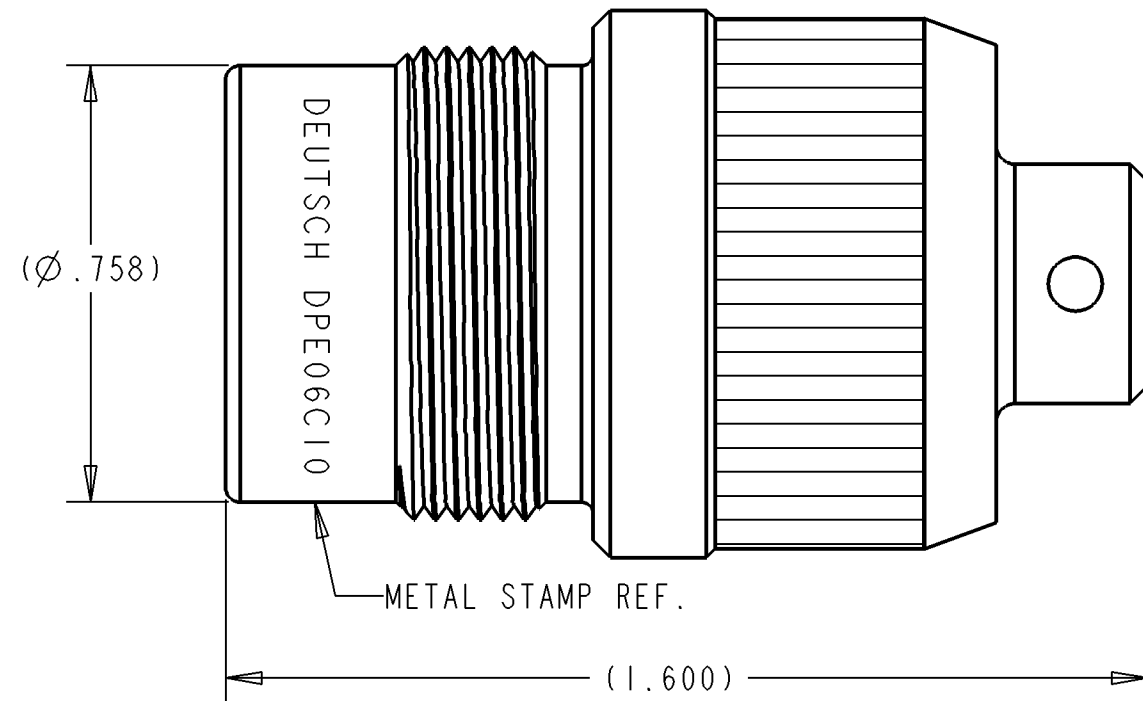


REV	DESCRIPTIONS	DATE	APPROVED
N/C	NEW RELEASE PER E.O.H4110	9/29/04	F.B.



1. DIMENSIONS ARE IN INCHES UNLESS OTHERWISE SPECIFIED.


2. MATERIAL:
CAP BODY - BRASS
CRIMP SLEEVE - BRASS

3. FINISH:
CAP BODY - NICKEL PLATED
CRIMP SLEEVE - TIN PLATED

FILE:DPE06C10-ENV

	SIGNATURE & DATE
DR	S.LUI 9/28/04
CHK	F.BAUTISTA 9/29/04
PE	M.ALLEN 9/29/04
APPD	M.ALLEN 9/29/04
SCALE:	

PROTECTIVE CAP
FOR PLUG
SIZE 10
ENVELOPE

CP	MATL CODE 78
DEUTSCH ENGINEERED INTERCONNECT SOLUTIONS  250 Eddie Jones Way Oceanside, CA 92054	
B	DPE06C10
DWG SIZE	CAGE CODE 11139
	SHEET 1 OF 1

NOTE(S):

Mouser Electronics

Authorized Distributor

Click to View Pricing, Inventory, Delivery & Lifecycle Information:

[TE Connectivity:](#)

[DPE06C10](#)