

4

3

2

1

THIS DRAWING IS UNPUBLISHED

RELEASED FOR PUBLICATION

APR ,1995.

© COPYRIGHT 2010 By -

ALL RIGHTS RESERVED.

LOC

DIST

REVISIONS

P

LTR

DESCRIPTION

DATE

DWN

APVD

IR

—

F

CONTACT PIN MATERIAL & PLATING CHANGE

20JUN2014

PS

JK

Pos.

$L_{-1,0}$

2

5,08

3

7,62

4

10,16

5

12,7

6

15,24

7

17,78

8

20,32

9

22,86

10

25,4

11

27,94

12

30,48

13

33,02

14

35,56

15

38,1

16

40,64

17

43,18

POS.x2.54=L<sub>-1.0</sub>

(L-2.54)

2.8 REF

2.54

□0.63

1.3

5 REF

2.54

5.8

4.4 "F"

7.62 -0.4

"C"

3° MAX.

(L-2.54)

1.8

8.2

1.27

EMPFHOULENES LEITERPLATTEN LAYOUT

RECOMMENDED PCB-LAYOUT

1

MATING SIDE: AREA "F" MIN 0.7µm PdNi + MIN 0.1µm GOLD FLASH OVER 1.27µm NICKEL

SOLDER SIDE: 3.0 TO 5.0µm TIN OVER 1.27µm NICKEL

KONTAKTSTIFT / CONTACT PIN

Cu Zn

1

2

STIFTGEHÄUSE / PIN HOUSING

PCT-GF

SCHWARZ / BLACK

1

BENENNUNG EINZELTEIL  
PART DESRIPTION

WERKSTOFF  
MATERIAL

OBERFLÄCHE / FARBE  
SURFACE / COLOR

SI No

THIS DRAWING IS A CONTROLLED DOCUMENT.

DIMENSIONS:  
mm

0 PLC

1 PLC

2 PLC

3 PLC

4 PLC

ANGLES

± -

± -

± -

± -

± -

±

TOLERANCES UNLESS  
OTHERWISE SPECIFIED:  
TOL ± 0.2

FINISH

MATERIAL

SEE TABLE

SEE TABLE

DWN  
A.HO  
CHK  
M.SCHAARSCHMIDT  
APVD  
—  
PRODUCT SPEC  
108-18012  
APPLICATION SPEC  
—  
WEIGHT  
—

23.03.95

23.03.95

—

—

—

—

—

—

TE Connectivity

NAME  
AMPMODU II PIN HEADER , SMD,  
PACKED IN TUBE

SIZE  
A3

CAGE CODE  
00779

DRAWING NO  
C-966269

RESTRICTED TO  
—

CUSTOMER DRAWING

SCALE  
2:1

SHEET  
1 OF 2

REV  
F

1470-19 (3/11)

THIS DRAWING IS UNPUBLISHED

RELEASED FOR PUBLICATION

APR ,1995.

© COPYRIGHT 2010 By --

ALL RIGHTS RESERVED.

LOC  
IRDIST  
—

REVISIONS

P

LTR

DESCRIPTION

DATE

DWN

APVD

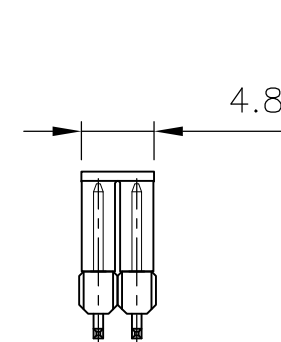
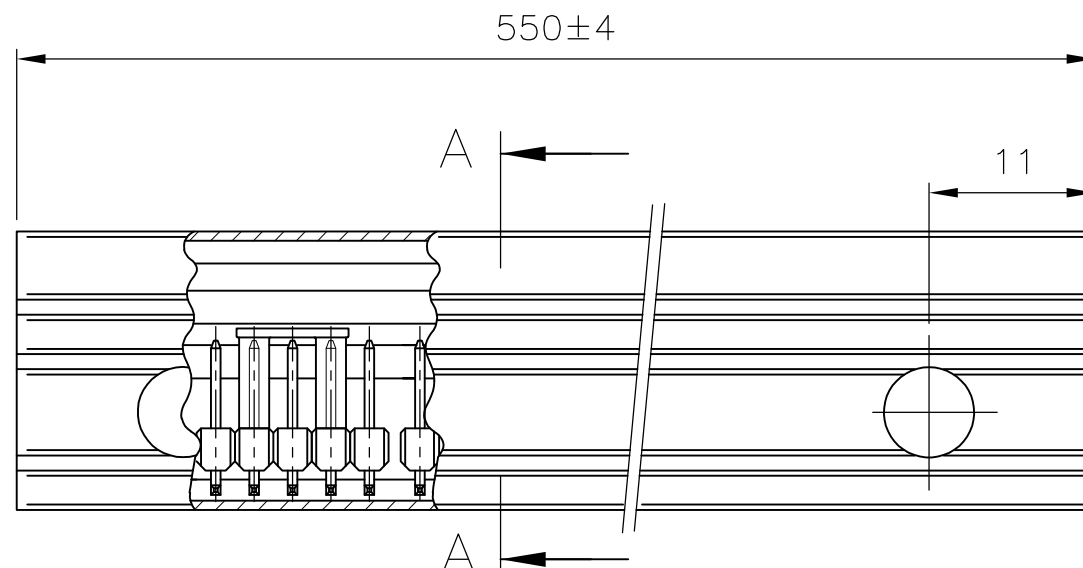
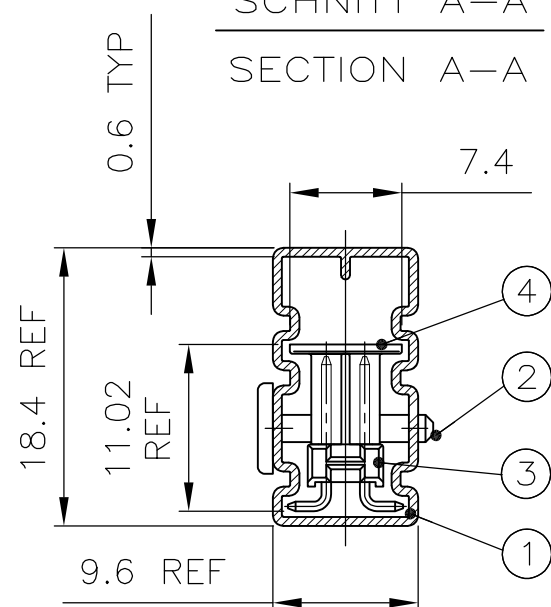
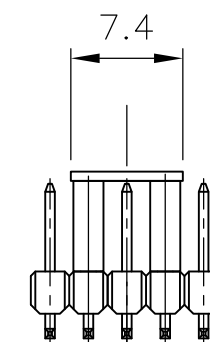
—

SEE SHEET 1

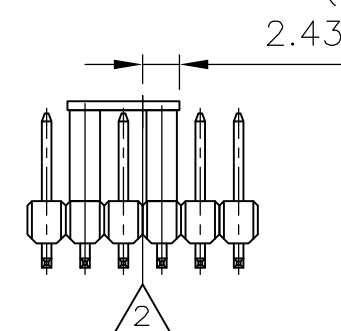
—

—

—

SCHNITT A—A  
SECTION A—ANUR -2  
(-2 ONLY)

UNGERADE POLZAHL(ODD)



GERADE POLZAHL(STRAIGHT)

POSITION IN TUBE  
Lage in Verpackungshre

5

OBSOLETE PARTS: OBSOLETE CIS STREAMLINING  
PER D.RENAUD/D.SINISI

4

OBSOLETE

3

SIEHE TABELLE  
SEE TABLE

2

MITTELLINIE DER STIFTLAISTE  
CENTER LINE OF THE PIN ROW


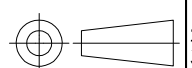
1

AMPMODU II SMD—STIFTLAISTE SIEHE BLATT 1 VON 2.  
AMPMODU II SMD—PIN ROW SEE SHEET 1 OF 2.

1-966 269-0	10	20
<del>966 269-9</del>	9	23
966 269-8	8	25
<del>4 966 269-7</del>	7	29
<del>4 966 269-6</del>	6	34
966 269-5	5	41
966 269-4	4	51
966 269-3	3	69
<del>4 966 269-2</del>	2	108
BESTELL-NR. PART NO.	POLZ. PROREIHE POLZ. PER ROW	VERPACKUNGS-EINHEIT PACKING UNIT

OBSOLETE

5

S.TABELLE SEE TABLE	4	3	ADAPTER	PCT-GF	SCHWARZ / BLACK	4
	3	3	AMPMODU II STIFTL., SMD	1	1	3
	2	2	VERSCHL. STIFT / LOCKS PIN	PP	ROT	2
	1	1	VERPACKUNGSROHR / PACKING PIPE	ANTI-STATISCH	TRANSPAR.	1
BESTELL-NR. / PN	POS.	STÜCK / PIECE	BENENNUNG EINZELTEIL PART DESCRIPTION	WERKSTOFF MATERIAL	OBERFLÄCHE / FARBE SURFACE / COLOR	SI No
THIS DRAWING IS A CONTROLLED DOCUMENT.			DWN A.HO 23.03.95 CHK M.SCHAARSCHMIDT 23.03.95 APVD —	 TE Connectivity		
DIMENSIONS: mm			PRODUCT SPEC 108-18012			
			APPLICATION SPEC —	NAME AMPMODU II PIN HEADER , SMD, PACKED IN TUBE		
MATERIAL SEE TABLE			WEIGHT —			
TOLERANCES UNLESS OTHERWISE SPECIFIED: TOL ± 0.2			FINISH SEE TABLE	SIZE A3		
				CAGE CODE 00779		
				DRAWING NO C-966269		
				RESTRICTED TO —		
				SCALE 2:1		
				SHEET 2 OF 2		
				REV F		
				CUSTOMER DRAWING		

# Mouser Electronics

Authorized Distributor

Click to View Pricing, Inventory, Delivery & Lifecycle Information:

[TE Connectivity:](#)

[966269-4](#)