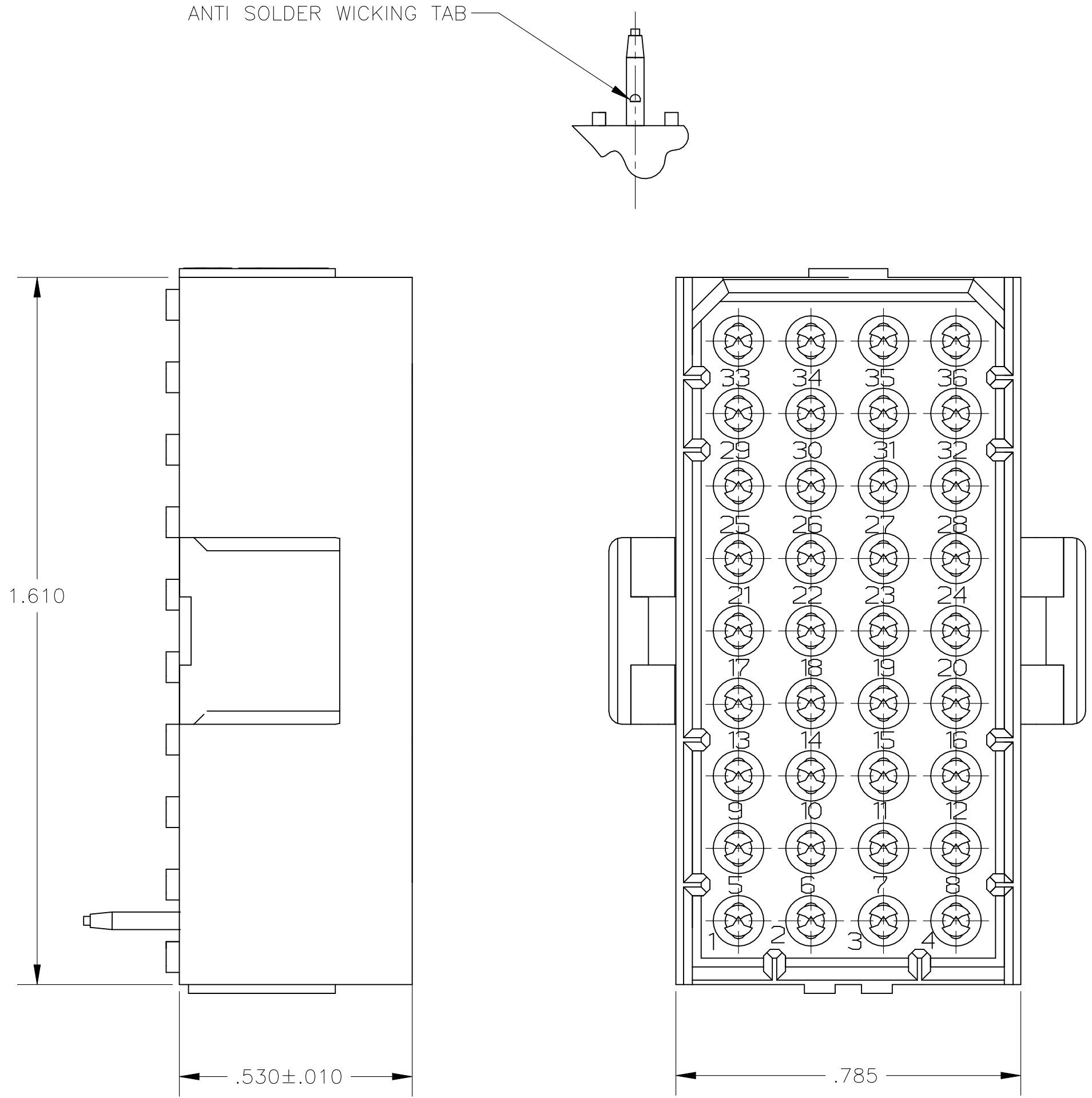
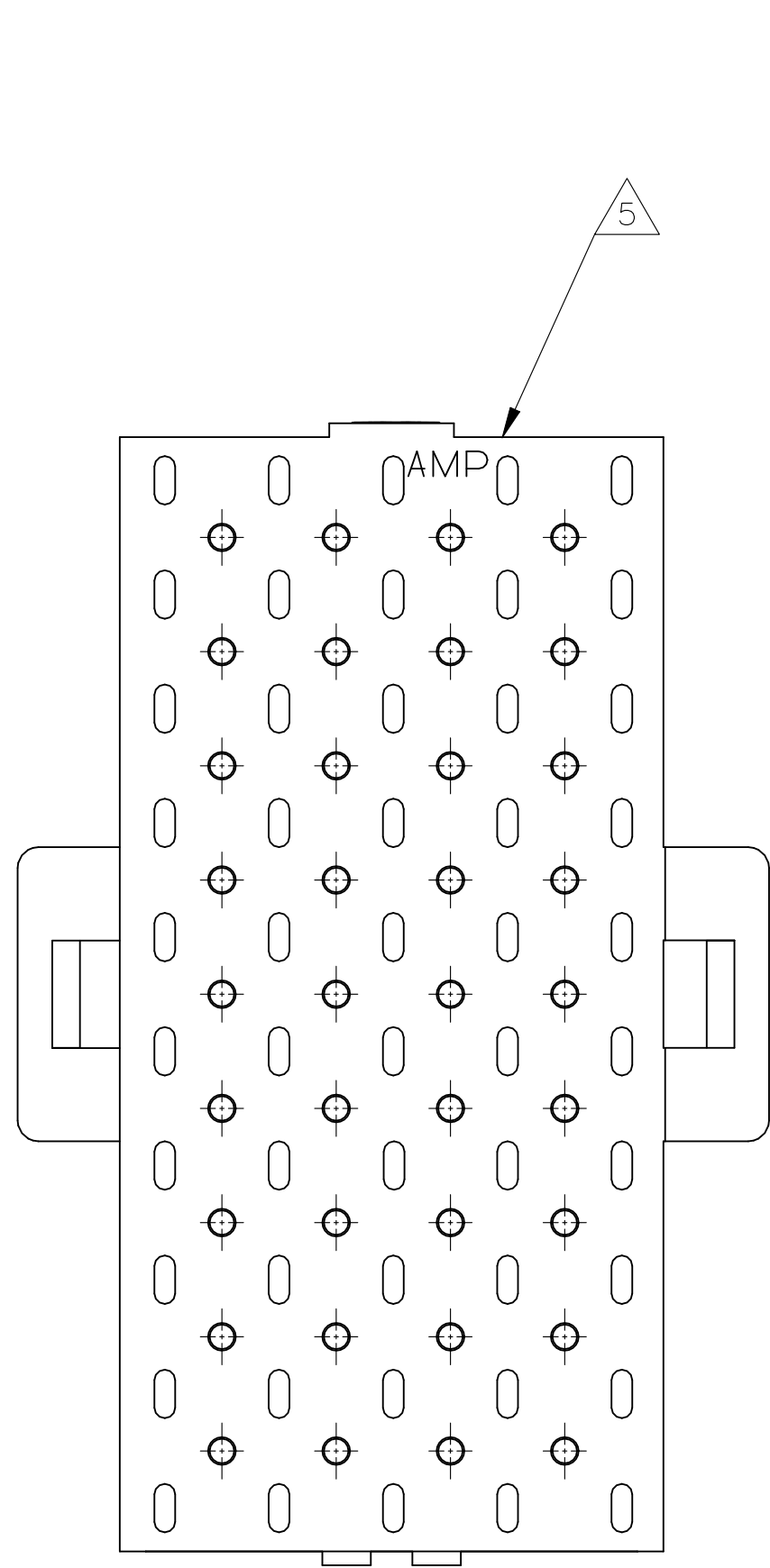


D

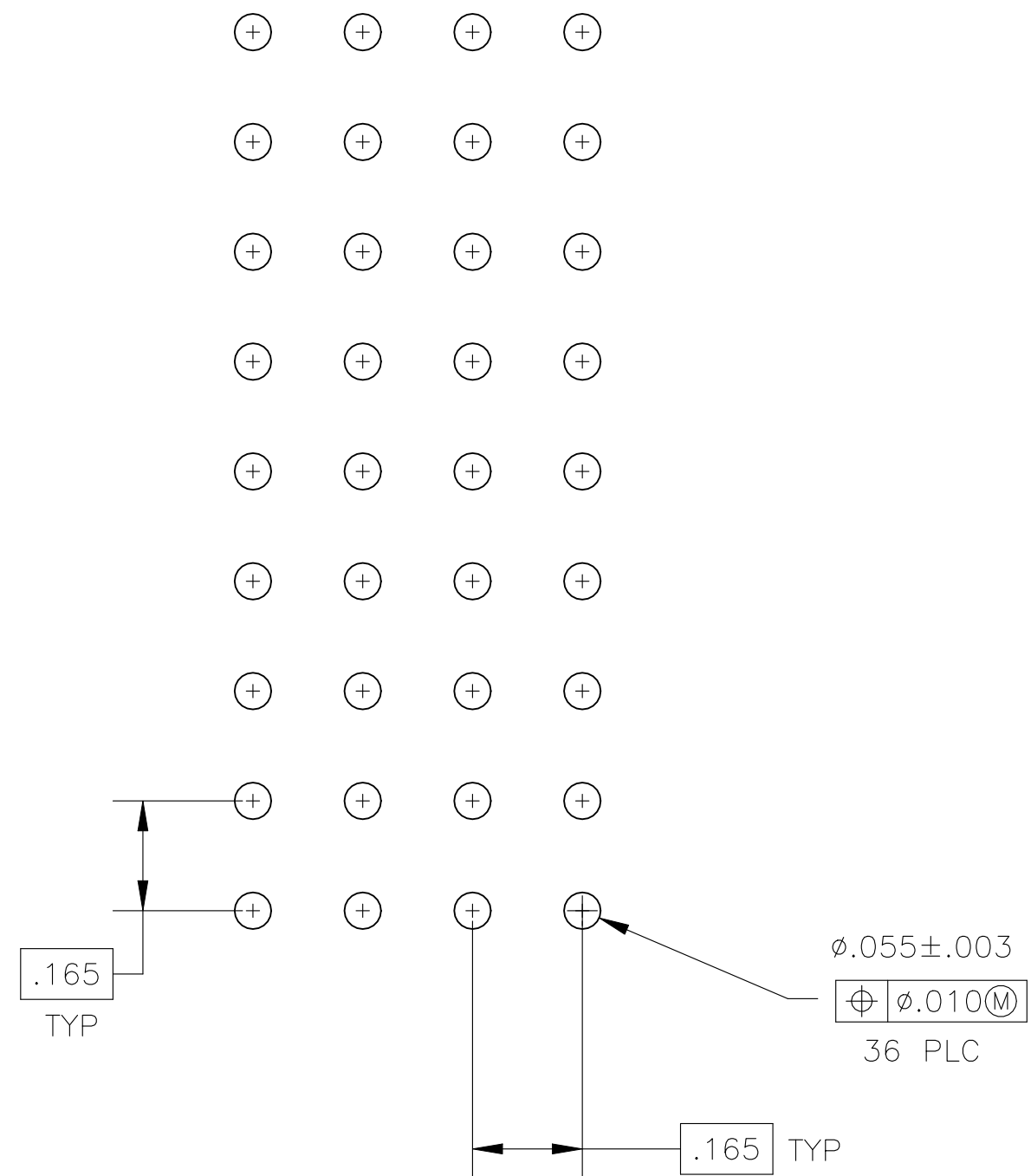
C

B

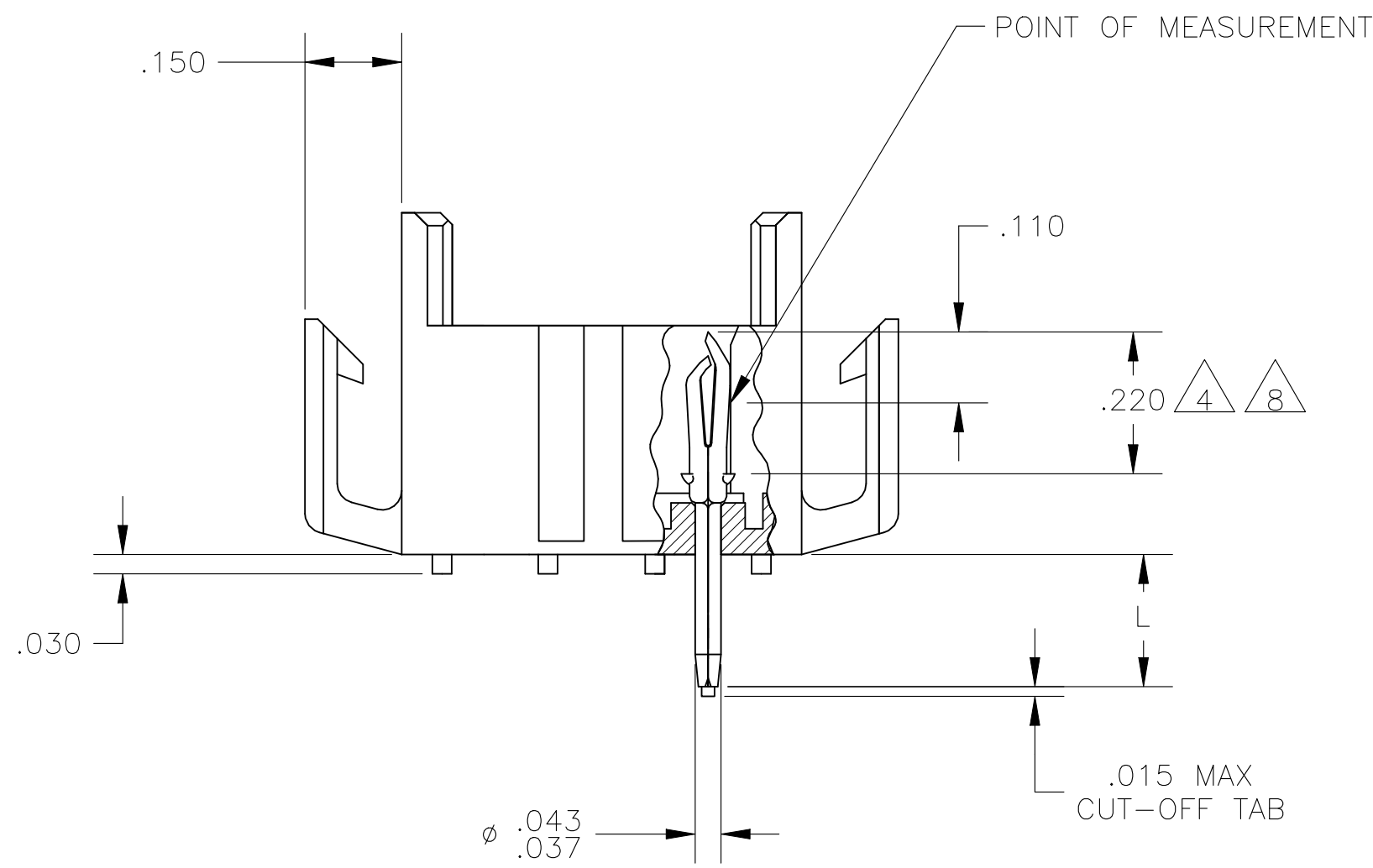
A



- 1 FITS SOCKET HOUSING 640526.
- 2 ASSEMBLY CONFORMS TO AMP SOLDERABILITY SPEC. 109-11-3.
- 3 FOR USE WITH .063 THICK P.C. BOARD.
- 4 CONTACT IS PLATED OVERALL WITH.000030 NICKEL, THEN .000030 GOLD OVER CONTACT LENGTH INDICATED AND .000150 MATTE TIN-LEAD ON SOLDER TAIL END.
- 5 UL AND CSA LOGO LOCATED ON THIS SURFACE.
- 6 FOR USE WITH .120 THICK P.C. BOARD.
- 7 TRAY PACKAGED VERSION OF 640506-1. PACKAGED 54 PCS. PER TRAY AND 7 TRAYS PER BOX.
- 8 CONTACT IS PLATED OVERALL WITH.000050 NICKEL, THEN .000030 GOLD OVER CONTACT LENGTH INDICATED AND .000150 MATTE TIN ON SOLDER TAIL END.
- 9 OBSOLETE PARTS: OBSOLETE CIS STREAMLINING PER D.RENAUD/D.SINISI
- 10 PARTITION PACKED AND BOXED, 270 PCS PER CARTON.
- 11 HOUSING MATERIAL: PA66, BLACK, UL 94 V-0 RATED  
CONTACT MATERIAL: PHOSPHOR BRONZE



RECOMMENDED P.C. BOARD LAYOUT



<div><div>10</div></div>	OBSOLETE	.210	<div><div>6</div></div>	GOLD	<div><div>4</div></div>	<del>1-640506-4</del>
		.210	<div><div>6</div></div>	GOLD	<div><div>8</div></div>	2-640506-4
		.150	<div><div>3</div></div>	GOLD	<div><div>8</div></div>	2-640506-2
<div><div>7</div><div>9</div></div>	OBSOLETE	.150	<div><div>3</div></div>	PRE-TIN		<del>1-640506-0</del>
		.210	<div><div>6</div></div>	GOLD	<div><div>4</div></div>	640506-4
		.210	<div><div>6</div></div>	PRE-TIN		640506-3
		.150	<div><div>3</div></div>	GOLD	<div><div>4</div></div>	640506-2
		.150	<div><div>3</div></div>	PRE-TIN		640506-1
		<div>"L" +.010 -.020</div>		PIN FINISH		PART NUMBER

.015	0.38	.110	2.79	1.610	40.89
.010	0.25	.063	1.60	.785	19.94
.008	0.20	.055	1.40	.530	13.46
.005	0.13	.043	1.09	.220	5.59
.003	0.08	.037	0.94	.210	5.33
.000050	0.00127	.030	0.76	.165	4.19
.000030	0.00076	.020	0.51	.150	3.81
IN	MM	IN	MM	IN	MM
CONVERSION TABLE					

THIS DRAWING IS A CONTROLLED DOCUMENT.

DWN  
J. HUFFMAN  
28 APR 98

CHK  
R. SWING  
28 APR 98

APVD  
T. REDDICK  
28 APR 98

NAME

TE Connectivity

PRODUCT SPEC

APPLICATION SPEC

WEIGHT

CUSTOMER DRAWING

SCALE 4:1

SHEET 1 OF 1

REV V

RESTRICTED TO

SIZE CAGE CODE DRAWING NO

A100779640506

TE Connectivity

HEADER ASSEMBLY, PIN,  
36 POSITION MR.

# Mouser Electronics

Authorized Distributor

Click to View Pricing, Inventory, Delivery & Lifecycle Information:

[TE Connectivity:](#)

[2-640506-4](#)