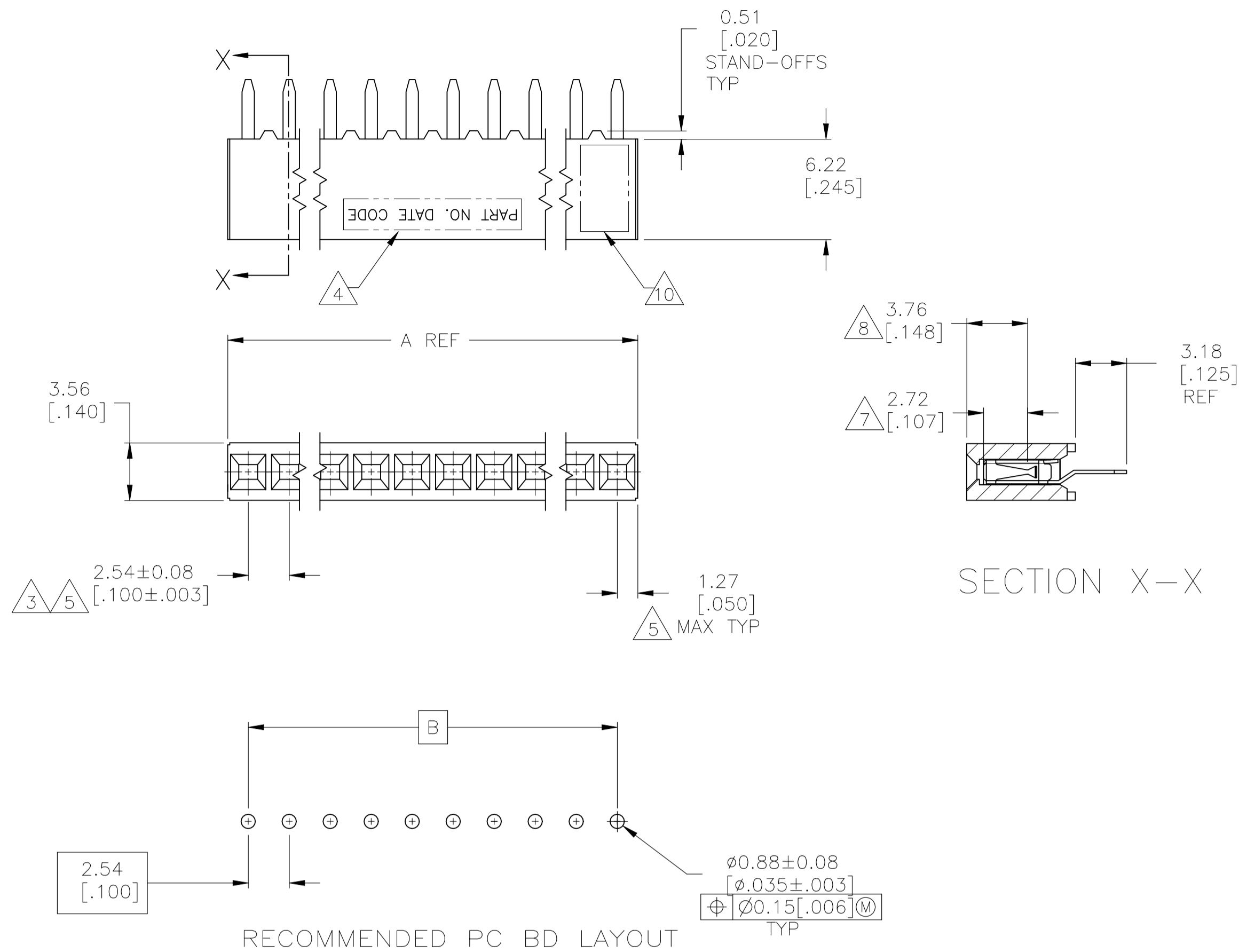




REVISIONS					
P	LTR	DESCRIPTION	DATE	DWN	APVD
	P	HOUSING RESIN CHANGED	27OCT2021	SCB	KJK



6	9	OBSOLETE		2.54 [1.100]	5.08 [2.200]	2	12	8-535541-9
				99.06 [3.900]	101.60 [4.000]	40	12	8-535541-8
				96.52 [3.800]	99.06 [3.900]	39	12	8-535541-7
				93.98 [3.700]	96.52 [3.800]	38	12	8-535541-6
				91.44 [3.600]	93.98 [3.700]	37	12	8-535541-5
				88.90 [3.500]	91.44 [3.600]	36	12	8-535541-4
				86.36 [3.400]	88.90 [3.500]	35	12	8-535541-3
				83.82 [3.300]	86.36 [3.400]	34	12	8-535541-2
				81.28 [3.200]	83.82 [3.300]	33	12	8-535541-1
				78.74 [3.100]	81.28 [3.200]	32	12	8-535541-0
				76.20 [3.000]	78.74 [3.100]	31	12	7-535541-9
				73.66 [2.900]	76.20 [3.000]	30	12	7-535541-8
				71.12 [2.800]	73.66 [2.900]	29	12	7-535541-7
				68.58 [2.700]	71.12 [2.800]	28	12	7-535541-6
				66.04 [2.600]	68.58 [2.700]	27	12	7-535541-5
				63.50 [2.500]	66.04 [2.600]	26	12	7-535541-4
				60.96 [2.400]	63.50 [2.500]	25	12	7-535541-3
				58.42 [2.300]	60.96 [2.400]	24	12	7-535541-2
				55.88 [2.200]	58.42 [2.300]	23	12	7-535541-1
				53.34 [2.100]	55.88 [2.200]	22	12	7-535541-0
				50.80 [2.000]	53.34 [2.100]	21	12	6-535541-9
				48.26 [1.900]	50.80 [2.000]	20	12	6-535541-8
				45.72 [1.800]	48.26 [1.900]	19	12	6-535541-7
				43.18 [1.700]	45.72 [1.800]	18	12	6-535541-6
				40.64 [1.600]	43.18 [1.700]	17	12	6-535541-5
				38.10 [1.500]	40.64 [1.600]	16	12	6-535541-4
				35.56 [1.400]	38.10 [1.500]	15	12	6-535541-3
				33.02 [1.300]	35.56 [1.400]	14	12	6-535541-2
				30.48 [1.200]	33.02 [1.300]	13	12	6-535541-1
				27.94 [1.100]	30.48 [1.200]	12	12	6-535541-0
				25.40 [1.000]	27.94 [1.100]	11	12	5-535541-9
				22.86 [1.900]	25.40 [1.000]	10	12	5-535541-8
				20.32 [1.800]	22.86 [1.900]	9	12	5-535541-7
				17.78 [1.700]	20.32 [1.800]	8	12	5-535541-6
				15.24 [1.600]	17.78 [1.700]	7	12	5-535541-5
				12.70 [1.500]	15.24 [1.600]	6	12	5-535541-4
				10.16 [1.400]	12.70 [1.500]	5	12	5-535541-3
				7.62 [1.300]	10.16 [1.400]	4	12	5-535541-2
				5.08 [1.200]	7.62 [1.300]	3	12	5-535541-1
			FINISH	B	A	NO OF POSN		PART NUMBER

- 1 HOUSING: FLAME RETARDANT, GLASS FILLED, POLYESTER, COLOR: BLACK.
CONTACT: PHOSPHOR BRONZE
- 2 CONTACT: DUPLEX PLATED $0.76\mu\text{m}$ [.000030] MIN GOLD IN CONTACT
AREA, $3.81\text{--}7.62\mu\text{m}$ [.000150–.000300] BRIGHT TIN–LEAD ON LEADS
ALL OVER $1.27\mu\text{m}$ [.000050] MIN NICKEL
- 3 THESE DIMENSIONS PERTAIN TO CAVITY CENTERLINES ONLY – NOT TO
CONTACT LOCATIONS
- 4 PART NUMBER AND DATE CODE ARE MARKED IN APPROXIMATE LOCATION SHOWN,
EITHER SIDE.
- 5 TOLERANCE IS NON–CUMULATIVE.
- 6 2 POSITION DATE CODE IS MARKED OPPOSITE SIDE OF TE CONNECTIVITY LOGO.
- 7 POINT–OF–MEASUREMENT DIMENSION FOR PLATING
THICKNESS (INSIDE CONTACT BEAM).
- 8 POINT–OF–CONTACT DIMENSION.
- 9 NO PART NUMBER MARKING REQUIRED FOR THIS PART.
- 10 TE LOGO AND CSA LOGO ARE MOLDED INTO HOUSING.
- 11 CONTACT: DUPLEX PLATED $0.76\mu\text{m}$ [.000030] MIN GOLD IN CONTACT
AREA, $3.81\text{--}7.62\mu\text{m}$ [.000150–.000300] MATTE TIN ON LEADS
ALL OVER $1.27\mu\text{m}$ [.000050] MIN NICKEL
- 12 ROHS 2002/95/EC COMPLIANT.

<div><div>2</div><div>9</div><div>2</div><div>9</div><div>9</div><div>9</div></div>	2.54	[.100]	5.08	[.200]	2	<div>6</div>	3-535541-9
	99.06	[3.900]	101.60	[4.000]	40		3-535541-8
	96.52	[3.800]	99.06	[3.900]	39		3-535541-7
	93.98	[3.700]	96.52	[3.800]	38		3-535541-6
	91.44	[3.600]	93.98	[3.700]	37		3-535541-5
	88.90	[3.500]	91.44	[3.600]	36		3-535541-4
	86.36	[3.400]	88.90	[3.500]	35		3-535541-3
	83.82	[3.300]	86.36	[3.400]	34		3-535541-2
	81.28	[3.200]	83.82	[3.300]	33		3-535541-1
	78.74	[3.100]	81.28	[3.200]	32		3-535541-0
	76.20	[3.000]	78.74	[3.100]	31		2-535541-9
	73.66	[2.900]	76.20	[3.000]	30		2-535541-8
	71.12	[2.800]	73.66	[2.900]	29		2-535541-7
	68.58	[2.700]	71.12	[2.800]	28		2-535541-6
	66.04	[2.600]	68.58	[2.700]	27		2-535541-5
	63.50	[2.500]	66.04	[2.600]	26		2-535541-4
	60.96	[2.400]	63.50	[2.500]	25		2-535541-3
	58.42	[2.300]	60.96	[2.400]	24		2-535541-2
	55.88	[2.200]	58.42	[2.300]	23		2-535541-1
	53.34	[2.100]	55.88	[2.200]	22		2-535541-0
	50.80	[2.000]	53.34	[2.100]	21		1-535541-9
	48.26	[1.900]	50.80	[2.000]	20		1-535541-8
	45.72	[1.800]	48.26	[1.900]	19		1-535541-7
	43.18	[1.700]	45.72	[1.800]	18		1-535541-6
	40.64	[1.600]	43.18	[1.700]	17		1-535541-5
	38.10	[1.500]	40.64	[1.600]	16		1-535541-4
	35.56	[1.400]	38.10	[1.500]	15		1-535541-3
	33.02	[1.300]	35.56	[1.400]	14		1-535541-2
	30.48	[1.200]	33.02	[1.300]	13		1-535541-1
	27.94	[1.100]	30.48	[1.200]	12		1-535541-0
	25.40	[1.000]	27.94	[1.100]	11		535541-9
	22.86	[.900]	25.40	[1.000]	10		535541-8
	20.32	[.800]	22.86	[.900]	9		535541-7
17.78	[.700]	20.32	[.800]	8		535541-6	
15.24	[.600]	17.78	[.700]	7		535541-5	
12.70	[.500]	15.24	[.600]	6		535541-4	
10.16	[.400]	12.70	[.500]	5		535541-3	
7.62	[.300]	10.16	[.400]	4		535541-2	
5.08	[.200]	7.62	[.300]	3		535541-1	

FINISH		B		A		NO OF POSN		PART NUMBER	
THIS DRAWING IS A CONTROLLED DOCUMENT.				DWN M.BINNER 05NOV02 CHK J.OLSON 05NOV02		 TE Connectivity			
DIMENSIONS: mm [INCHES]		TOLERANCES, UNLESS OTHERWISE SPECIFIED:		APVD J.OLSON 05NOV02 PRODUCT SPEC 108-25022 APPLICATION SPEC 114-25018		NAME RECP.T ASSY, MOD IV, SINGLE ROW, .100CL, VERTICAL BOARD MOUNT, CLOSED, TOP ENTRY, SHORT PNT. OF CONTACT			
		0 PLC ± 1 PLC ± 2 PLC ± 0.25 [0.010] 3 PLC ± 0.13 [0.005] 4 PLC ± ANGLES ±		WEIGHT —		SIZE CAGE CODE DRAWING NO A1 00779 C=535541		RESTRICTED TO —	
MATERIAL		FINISH		CUSTOMER DRAWING		SCALE 4:1		SHEET 1 OF 1 REV	

Mouser Electronics

Authorized Distributor

Click to View Pricing, Inventory, Delivery & Lifecycle Information:

[TE Connectivity:](#)

[3-535541-9](#)