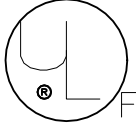


© - TE Connectivity. All Rights Reserved.		
PART NO	PKG TYPE	QTY
8-36919-3	BOX	25
8-36919-5	BAG	5
36919	BOX	50


REVISIONS					
P	LTR	DESCRIPTION	DATE	DWN	APVD
	K3	REVISED PER ECN-22-150900	28APR2022	RK	CSD

AMP  
WIRE RANGE

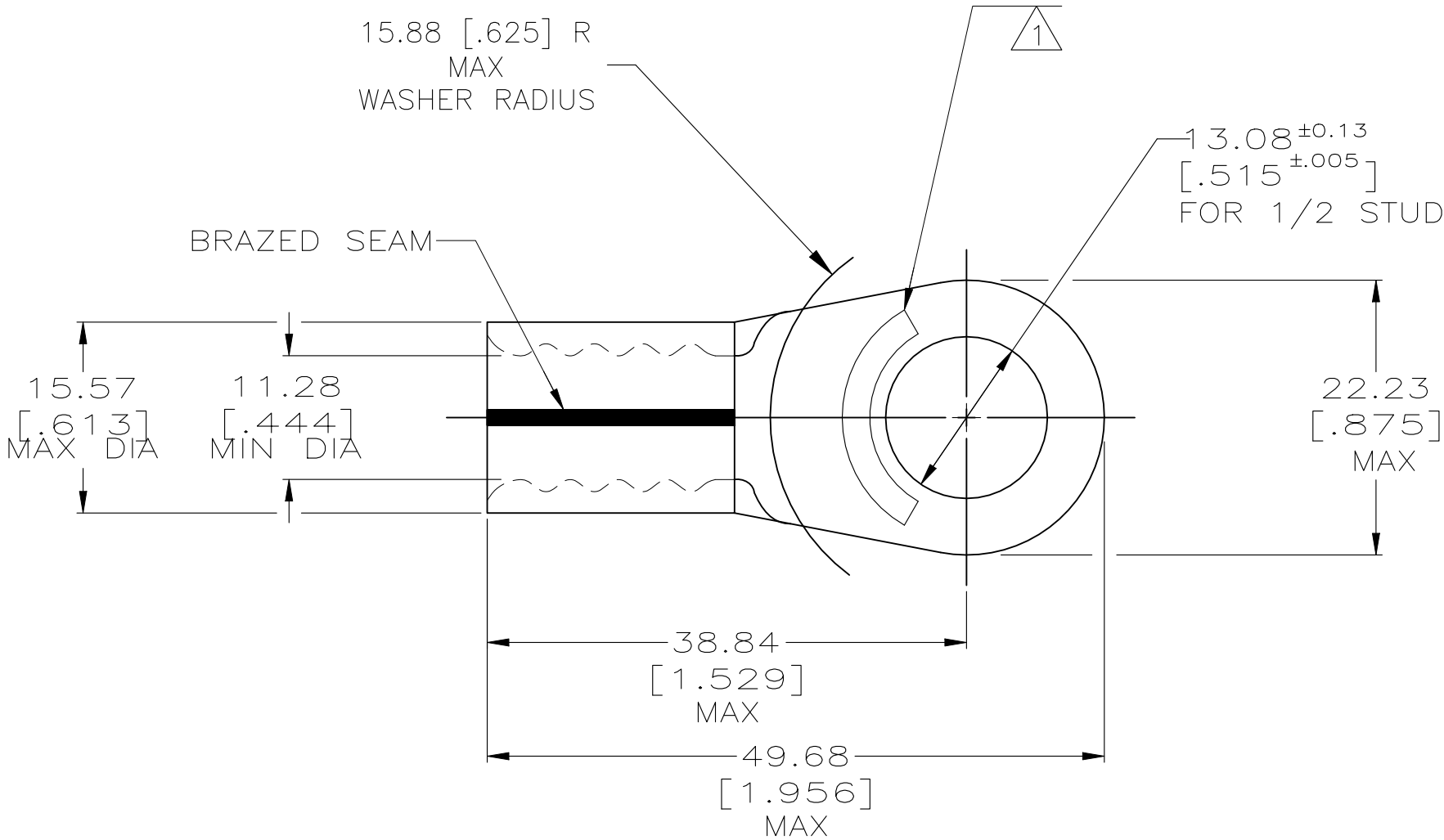
 Listed  
FILE E13288

1/0 AWG  
STRANDED

1/0 AWG  
STRANDED

 LR7189  
Certified

1/0 AWG  
STRANDED



AMP INCORPORATED  
CUSTOMER SERVICE SYSTEMS

MAX RECOMMENDED OPERATING TEMPERATURE:  
170°C MAX

FOR ADDITIONAL  
PRODUCT INFORMATION OR  
COPIES OF DRAWINGS  
AND TECHNICAL DOCUMENTS

PRODUCT INFORMATION CENTER  
1-800-522-6752

FOR APPLICATION  
TOOLING INFORMATION

TOOLING ASSISTANCE CENTER  
1-800-722-1111

FOR ORDER ENTRY

1-800-526-5142

THIS DRAWING IS A CONTROLLED DOCUMENT FOR  
AMP INCORPORATED. IT IS SUBJECT TO CHANGE  
AND THE CONTROLLING ENGINEERING ORGANIZATION  
SHOULD BE CONTACTED FOR THE LATEST REVISION.

THIS DRAWING IS A CONTROLLED DOCUMENT.

DWN  
DK SCHRUM  
7/21/91

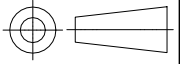
CHK  
RD HEIM  
8/15/91

APVD  
AJ KAUFMAN  
8/15/91

TE Connectivity

NAME  
TERMINAL, RING TONGUE,  
SOLISTRAND

DIMENSIONS:  
MM [INCHES]



TOLERANCES UNLESS  
OTHERWISE SPECIFIED:

0 PLC	±	-
1 PLC	±	-
2 PLC	±	0.20[.008]
3 PLC	±	-
4 PLC	±	-
ANGLES	±	-

MATERIAL  
- 3

FINISH  
- 4

WEIGHT  
-

SCALE  
2:1

SHEET  
1 OF 2

REV  
K3

CUSTOMER DRAWING

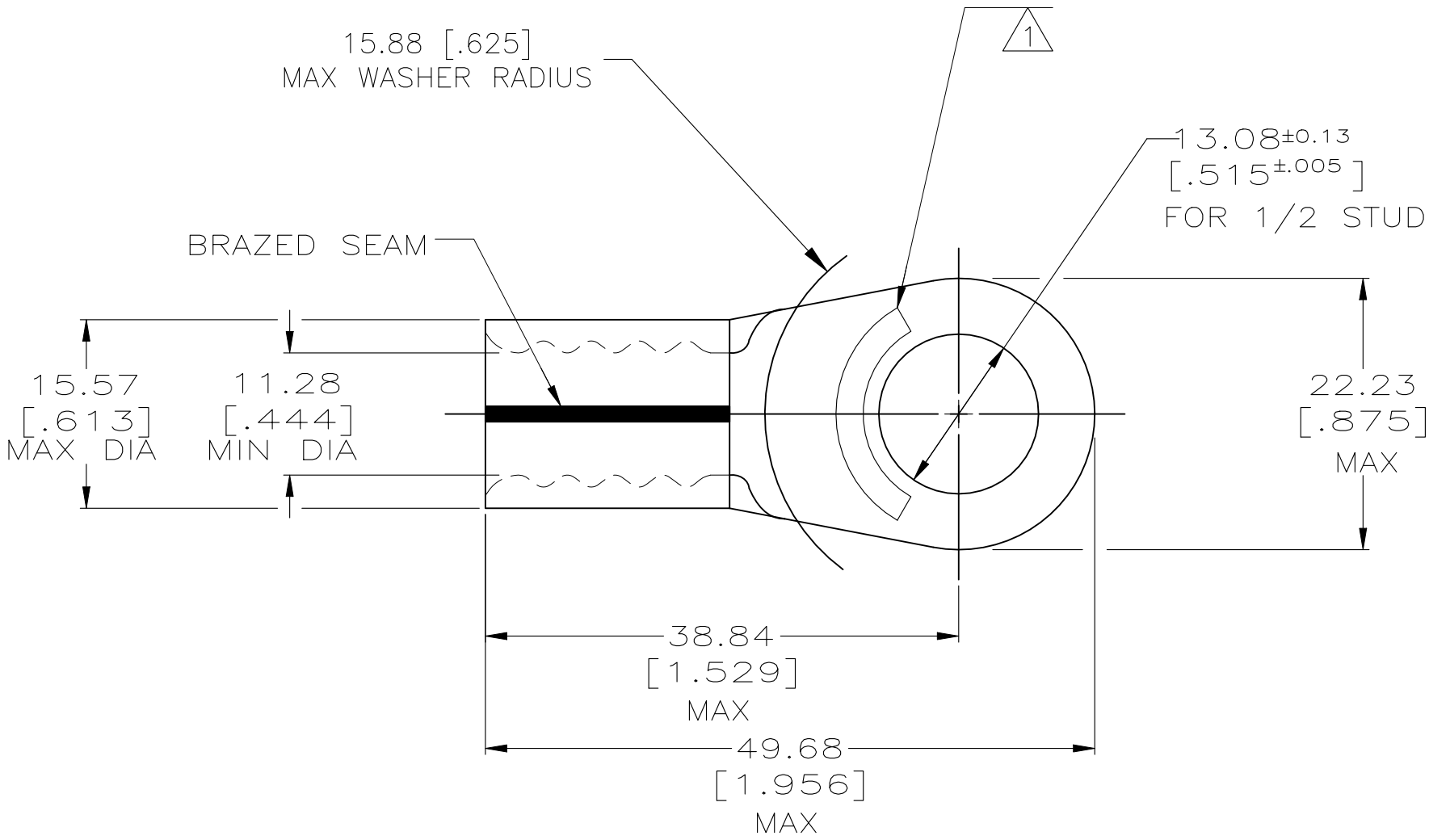
RESTRICTED TO  
-

© - TE Connectivity. All Rights Reserved.		
PART NO	PKG TYPE	QTY
36919-1	BOX	50

REVISIONS					
P	LTR	DESCRIPTION	DATE	DWN	APVD
	-	SEE SHEET 1	-	-	-

AMP  
WIRE RANGE

1/0 AWG  
SOLID OR STRANDED



- 1 STAMP AMP 1/OW\* APPROX AS SHOWN
- 2 MATERIAL THK IS 1.78±0.08 [.070±.003]
- 3 COPPER PER ASTM B-152, ANNEALED
- 4 NICKEL PLATE 0.00762 [.000300] MIN THK PER QQ-N-290

AMP INCORPORATED  
CUSTOMER SERVICE SYSTEMS

FOR ADDITIONAL  
PRODUCT INFORMATION OR  
COPIES OF DRAWINGS  
AND TECHNICAL DOCUMENTS

FOR APPLICATION  
TOOLING INFORMATION

FOR ORDER ENTRY

PRODUCT INFORMATION CENTER  
1-800-522-6752

TOOLING ASSISTANCE CENTER  
1-800-722-1111

1-800-526-5142

MAX RECOMMENDED OPERATING  
TEMPERATURE:  
343°C MAX

VOLTAGE RATING:  
N/A

CIRCULAR MIL AREA:  
42.4-60.6mm² [83,700-119,500]  
SOLID OR STRANDED

THIS DRAWING IS A CONTROLLED DOCUMENT FOR  
AMP INCORPORATED. IT IS SUBJECT TO CHANGE  
AND THE CONTROLLING ENGINEERING ORGANIZATION  
SHOULD BE CONTACTED FOR THE LATEST REVISION.

THIS DRAWING IS A CONTROLLED DOCUMENT.

DIMENSIONS:  
MM [INCHES]

TOLERANCES UNLESS  
OTHERWISE SPECIFIED:

0 PLC ± -  
1 PLC ± -  
2 PLC ± 0.20[.008]  
3 PLC ± -  
4 PLC ± -  
ANGLES ± -

MATERIAL - 3

FINISH - 4

DWN DK SCHRUM 7/21/91  
CHK RD HEIM 8/15/91  
APVD AJ KAUFMAN 8/15/91

PRODUCT SPEC  
APPLICATION SPEC

WEIGHT -

CUSTOMER DRAWING

TE Connectivity

NAME  
TERMINAL, RING TONGUE,  
SOLISTRAND

SIZE A2  
CAGE CODE 00779  
DRAWING NO C-36919

RESTRICTED TO -

SCALE 2:1  
SHEET 2 OF 2  
REV K3

# Mouser Electronics

Authorized Distributor

Click to View Pricing, Inventory, Delivery & Lifecycle Information:

[TE Connectivity:](#)

[36919](#)