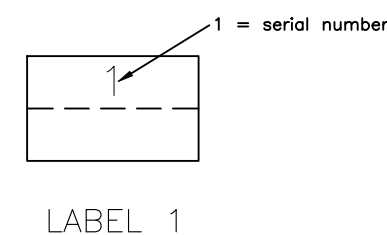
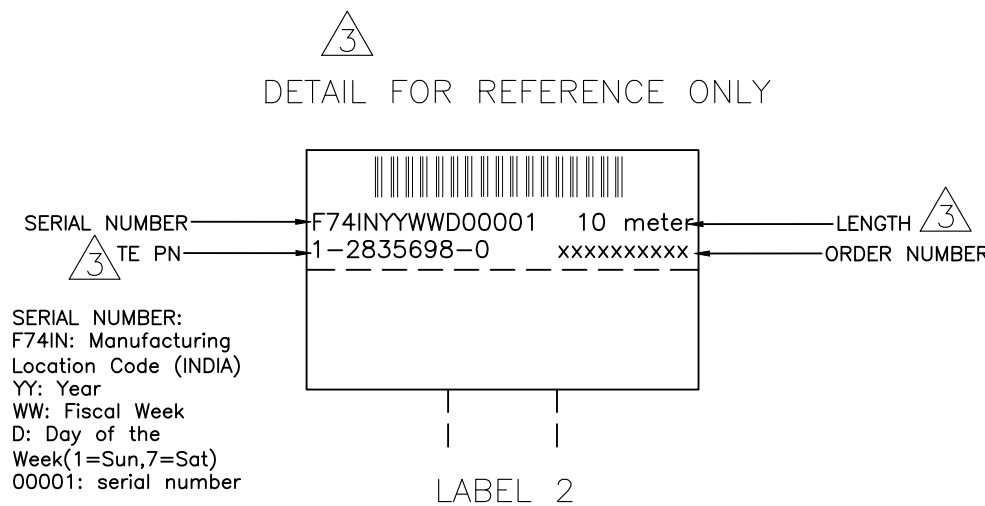
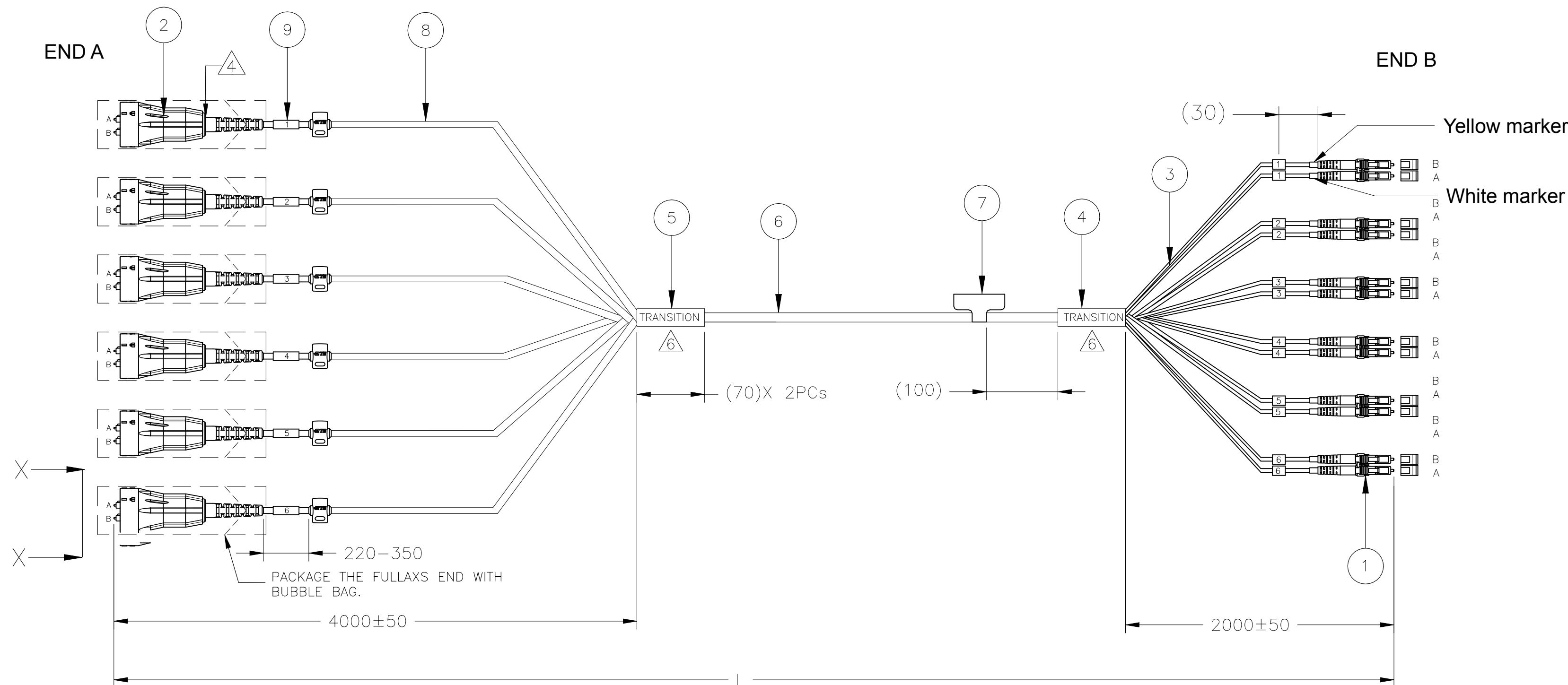
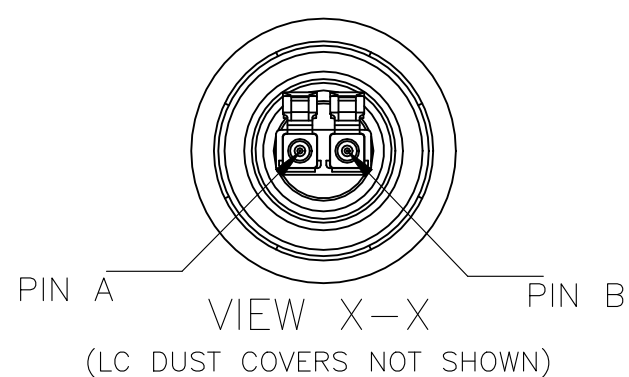
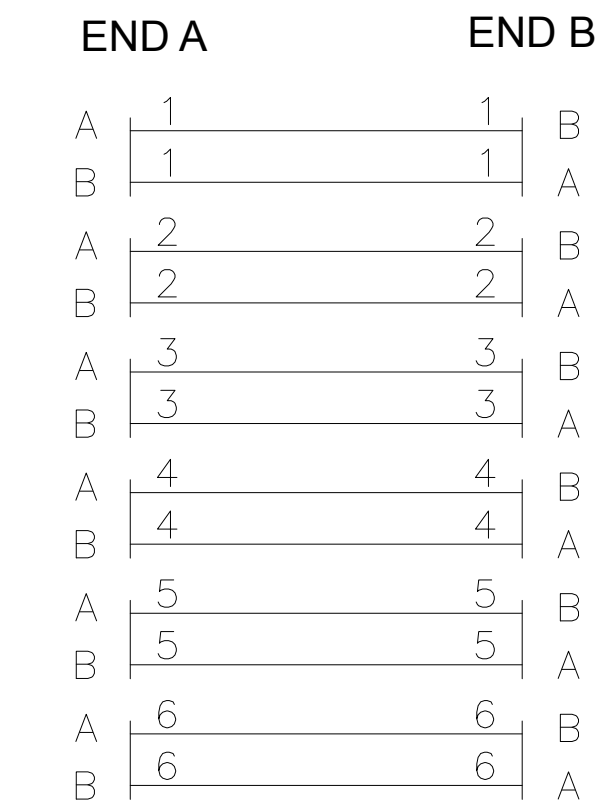


REVISIONS					
P	LTR	DESCRIPTION	DATE	DWN	APVD
A		ECR-21-000134	06JAN2021	SS	RS



NOTES:

- 1 MAX. CONNECTOR ATTENUATION 0.3dB, MEASURED AT 1310 nm AND 1550 nm ACCORDING TO IEC 61300-3-4 INSERTION METHOD B
- 2 MIN. RETURN LOSS 50 dB, IN MATED CONDITION AGAINST REFERENCE CONNECTOR AT 1310 nm AND 1550 nm
- 3 INFORMATION ON LABEL, SEE DETAIL FOR EXAMPLE.
- 4 THE TAIL SEAL BETWEEN OUTER SHELL AND INNER BODY CAN MEET IP65 REQUIREMENT
- 5 CABLE INFORMATION:
 - CORE DIAMETER: 9/125um
 - OUTER JACKET DIAMETER: Ø6.8MM
 - OUTER JACKET COLOUR: BLACK
 - OUTER JACKET MATERIAL: LSZH
 - CABLE ATTENUATION:0.4dB/km @1310 nm OR 0.3dB/km @1550 nm
 - UL1666 & CPR: Dca-s2,d1,a1 COMPLIANCE
- 6 THE TRANSITION DEVICE MEETS IP67



Qty	Description	Item
18	MARKER LABEL 1	9
L	Ø4.8MM PROTECTIVE TUBING, LSZH, BLACK	8
1	MARKER LABEL 2	7
L	Ø6.8MM FO CABLE 12FIBER, SINGLE MODE G657A2, LSZH, BLACK	6
1	CABLE BRANCHING DEVICE, 6C	5
1	CABLE BRANCHING DEVICE, 12C	4
L	FLEXIBLE PROTECTION TUBE, LSZH, BLACK O.D 2 to 2.5mm	3
6	FULLAXS LC DUPLEX PLUG ASSEMBLY, BLACK	2
6	LC DUPLEX CONNECTOR, SINGLE MODE, BLUE	1

THIS DRAWING IS A CONTROLLED DOCUMENT.		DWN: 20NOV2020 SIDDHARTH SINGH		TE Connectivity	
DIMENSIONS: mm		CHK: 20NOV2020 HERBERT. ZHANG		NAME: FOSM 12F FULLAXS LC-LC DUPLEX	
TOLERANCES UNLESS OTHERWISE SPECIFIED:		APVD: 20NOV2020 ROGER SONG	PRODUCT SPEC: -		
MATERIAL: -		FINISH: -	APPLICATION SPEC: -		
WEIGHT: -		SCALE: A2	CAGE CODE: 00779	DRAWING NO: C=2835698	RESTRICTED TO: -
CUSTOMER DRAWING		SCALE: NTS	SHEET: 1 of 2	REV: A	


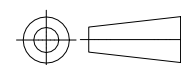
REVISIONS

P	LTR	DESCRIPTION	DATE	DWN	APVD
-	-	SEE SHEET 1	-	-	-

LENGTH "L" IN MM	TOLERANCE
L ≤ 50000	±1%
L > 50000	±1%

PART NUMBER 	DESCRIPTION	 LENGTH (Meters)	REMARKS
1-2835698-0	FOSM 12F FULLAXS LC-LC DUPLEX,10m	10±0.10	
2-2835698-0	FOSM 12F FULLAXS LC-LC DUPLEX,20m	20±0.20	
3-2835698-0	FOSM 12F FULLAXS LC-LC DUPLEX,30m	30±0.30	
5-2835698-0	FOSM 12F FULLAXS LC-LC DUPLEX,50m	50±0.50	
7-2835698-0	FOSM 12F FULLAXS LC-LC DUPLEX,70m	70±0.70	
9-2835698-9	FOSM 12F FULLAXS LC-LC DUPLEX,100m	100±1.0	
9-2835698-8	FOSM 12F FULLAXS LC-LC DUPLEX,150m	150±1.5	
9-2835698-6	FOSM 12F FULLAXS LC-LC DUPLEX,250m	250±2.5	

2835698

THIS DRAWING IS A CONTROLLED DOCUMENT.		DWN 20NOV2020 SIDDHARTH SINGH	 TE Connectivity	
		CHK 20NOV2020 HERBERT. ZHANG		
		APVD 20NOV2020 ROGER SONG	NAME FOSM 12F FULLAXS LC-LC DUPLEX	
DIMENSIONS: mm		TOLERANCES UNLESS OTHERWISE SPECIFIED:	PRODUCT SPEC -	
		0 PLC ± - 1 PLC ± - 2 PLC ± - 3 PLC ± - 4 PLC ± - ANGLES ± -	APPLICATION SPEC -	
MATERIAL -	FINISH -	WEIGHT -	SIZE A2	CAGE CODE 00779
CUSTOMER DRAWING			DRAWING NO C=2835698	RESTRICTED TO -
			SCALE NTS	SHEET 2 OF 2
			REV A	

Mouser Electronics

Authorized Distributor

Click to View Pricing, Inventory, Delivery & Lifecycle Information:

[TE Connectivity:](#)

[3-2835698-0](#)