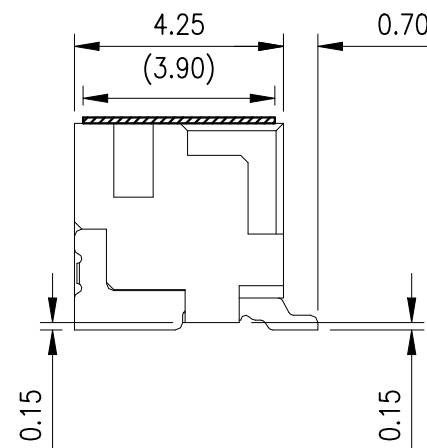

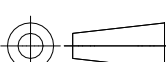
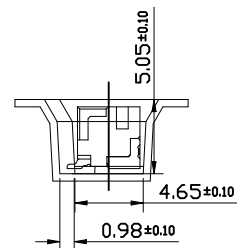
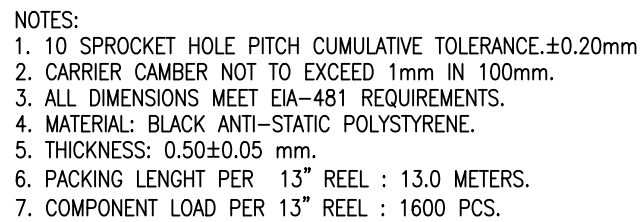




OF THE UNITED STATES OF AMERICA



BLACK	22.00	20.00	17.50	15P	7-2390138-5	5-2390138-5
	20.75	18.75	16.25	14P	7-2390138-4	5-2390138-4
	19.50	17.50	15.00	13P	7-2390138-3	5-2390138-3
	18.25	16.25	13.75	12P	7-2390138-2	5-2390138-2
	17.00	15.00	12.50	11P	7-2390138-1	5-2390138-1
	15.75	13.75	11.25	10P	7-2390138-0	5-2390138-0
	14.50	12.50	10.00	9P	6-2390138-9	4-2390138-9
	13.25	11.25	8.75	8P	6-2390138-8	4-2390138-8
	12.00	10.00	7.50	7P	6-2390138-7	4-2390138-7
	10.75	8.75	6.25	6P	6-2390138-6	4-2390138-6
	9.50	7.50	5.00	5P	6-2390138-5	4-2390138-5
	8.25	6.25	3.75	4P	6-2390138-4	4-2390138-4
	7.00	5.00	2.50	3P	6-2390138-3	4-2390138-3
	5.75	3.75	1.25	2P	6-2390138-2	4-2390138-2
	NATURAL	22.00	20.00	17.50	15P	3-2390138-5
20.75		18.75	16.25	14P	3-2390138-4	1-2390138-4
19.50		17.50	15.00	13P	3-2390138-3	1-2390138-3
18.25		16.25	13.75	12P	3-2390138-2	1-2390138-2
17.00		15.00	12.50	11P	3-2390138-1	1-2390138-1
15.75		13.75	11.25	10P	3-2390138-0	1-2390138-0
14.50		12.50	10.00	9P	2-2390138-9	2390138-9
13.25		11.25	8.75	8P	2-2390138-8	2390138-8
12.00		10.00	7.50	7P	2-2390138-7	2390138-7
10.75		8.75	6.25	6P	2-2390138-6	2390138-6
9.50		7.50	5.00	5P	2-2390138-5	2390138-5
8.25		6.25	3.75	4P	2-2390138-4	2390138-4
7.00		5.00	2.50	3P	2-2390138-3	2390138-3
5.75		3.75	1.25	2P	2-2390138-2	2390138-2
COLOR		DIM C	DIM B	DIM A	POS	GOLD FLASH MATT TIN
	PLATING SPEC					
	PART NUMBER					

THIS DRAWING IS A CONTROLLED DOCUMENT.		DWN Tommy Qian		<div></div> TE Connectivity					
		CHK Niki Shi							
DIMENSIONS: mm		TOLERANCES UNLESS OTHERWISE SPECIFIED:		NAME					
		APVD Niki Shi		1.25mm PITCH WTB Conn. SMT V —					
		PRODUCT SPEC —							
		APPLICATION SPEC —		SIZE	CAGE CODE	DRAWING NO	RESTRICTED TO		
		MATERIAL		WEIGHT N/A		A3	00779	C-2390138	—
		NOTE 1		NOTE 2		CUSTOMER DRAWING			
				SCALE N/A		SHEET 1 OF 4		REV A	



THIS DRAWING IS A CONTROLLED DOCUMENT.		DWN Tommy Qian CHK Niki Shi APVD Niki Shi 12APR2021 12APR2021 12APR2021		 TE Connectivity				PART NUMBER							
DIMENSIONS: mm		TOLERANCES UNLESS OTHERWISE SPECIFIED: 0 PLC ± 0.5 1 PLC ± 0.25 2 PLC ± 0.15 3 PLC ± 0.1 4 PLC ± - ANGLES ± 2°		NAME		1.25mm PITCH WTB Conn. SMT V -									
				PRODUCT SPEC		SIZE CAGE CODE DRAWING NO RESTRICTED TO									
				APPLICATION SPEC											
				WEIGHT											
MATERIAL		FINISH		A3		00779		C-2390138		-					
NOTE 1		NOTE 2		CUSTOMER DRAWING				SCALE		N/A		SHEET 2 OF 4		REV A	

CKT.	W	F	B0
2	16.00	7.50	6.04
3			7.29
4			8.54
5			9.79
6	24.00	11.50	11.04
7			12.29
8			13.54
9			14.79
10			16.04
11			17.29

4

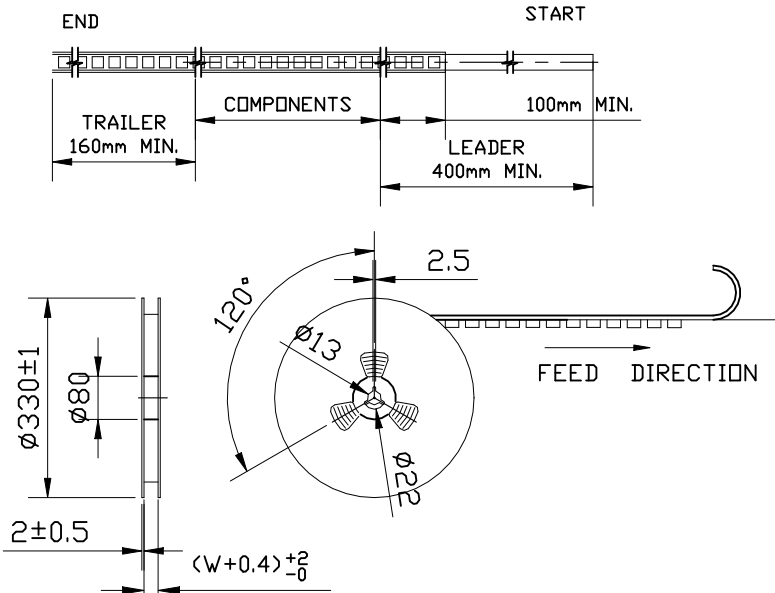
3

2

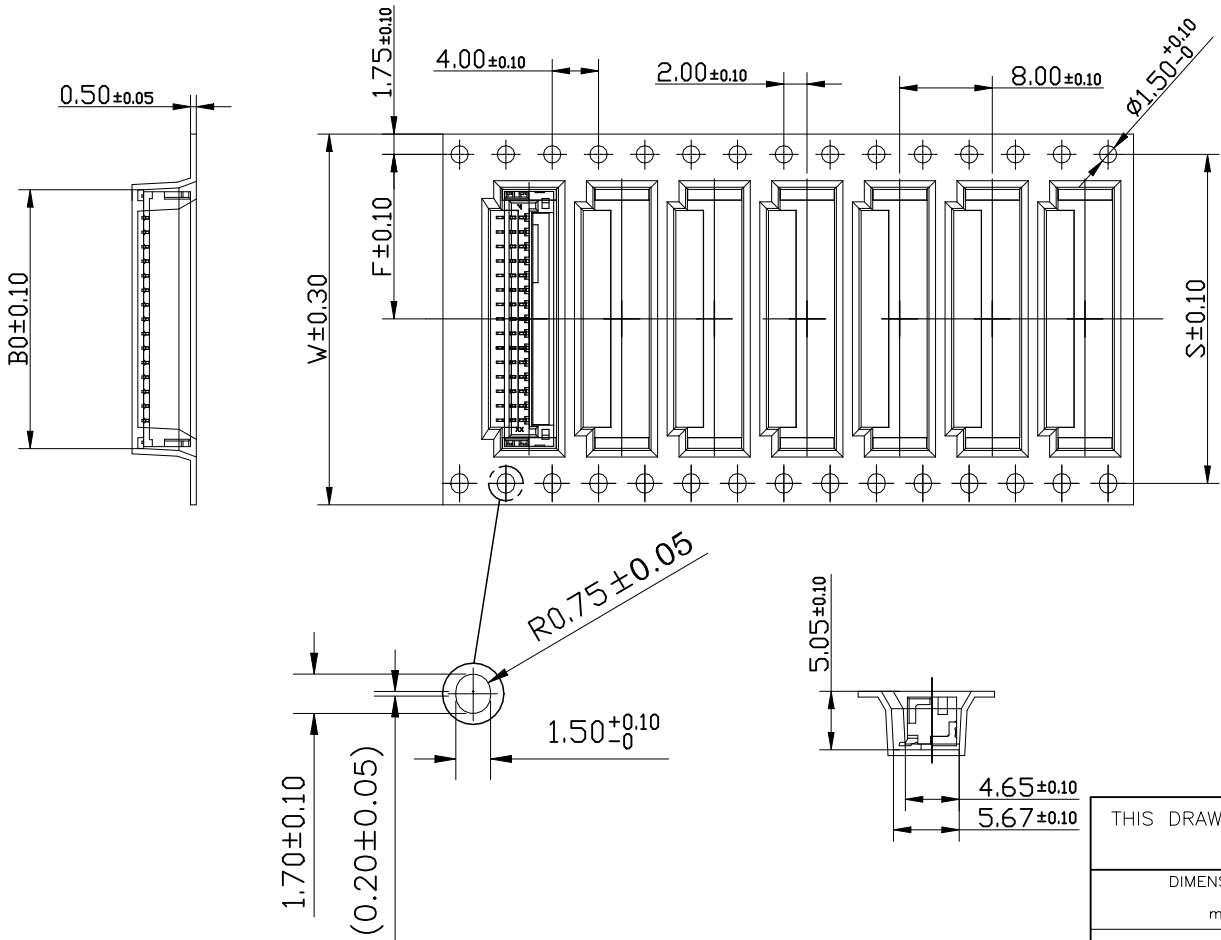
1

REVISIONS

P	LTR	DESCRIPTION	DATE	DWN	APVD
	—	SEE SHEET 1	—	—	—



- NOTES:
1. 10 SPROCKET HOLE PITCH CUMULATIVE TOLERANCE.±0.20mm
 2. CARRIER CAMBER NOT TO EXCEED 1mm IN 100mm.
 3. ALL DIMENSIONS MEET EIA-481 REQUIREMENTS.
 4. MATERIAL: BLACK ANTI-STATIC POLYSTYRENE.
 5. THICKNESS: 0.50±0.05 mm.
 6. PACKING LENGHT PER 13" REEL : 13.0 METERS.
 7. COMPONENT LOAD PER 13" REEL : 1600 PCS.



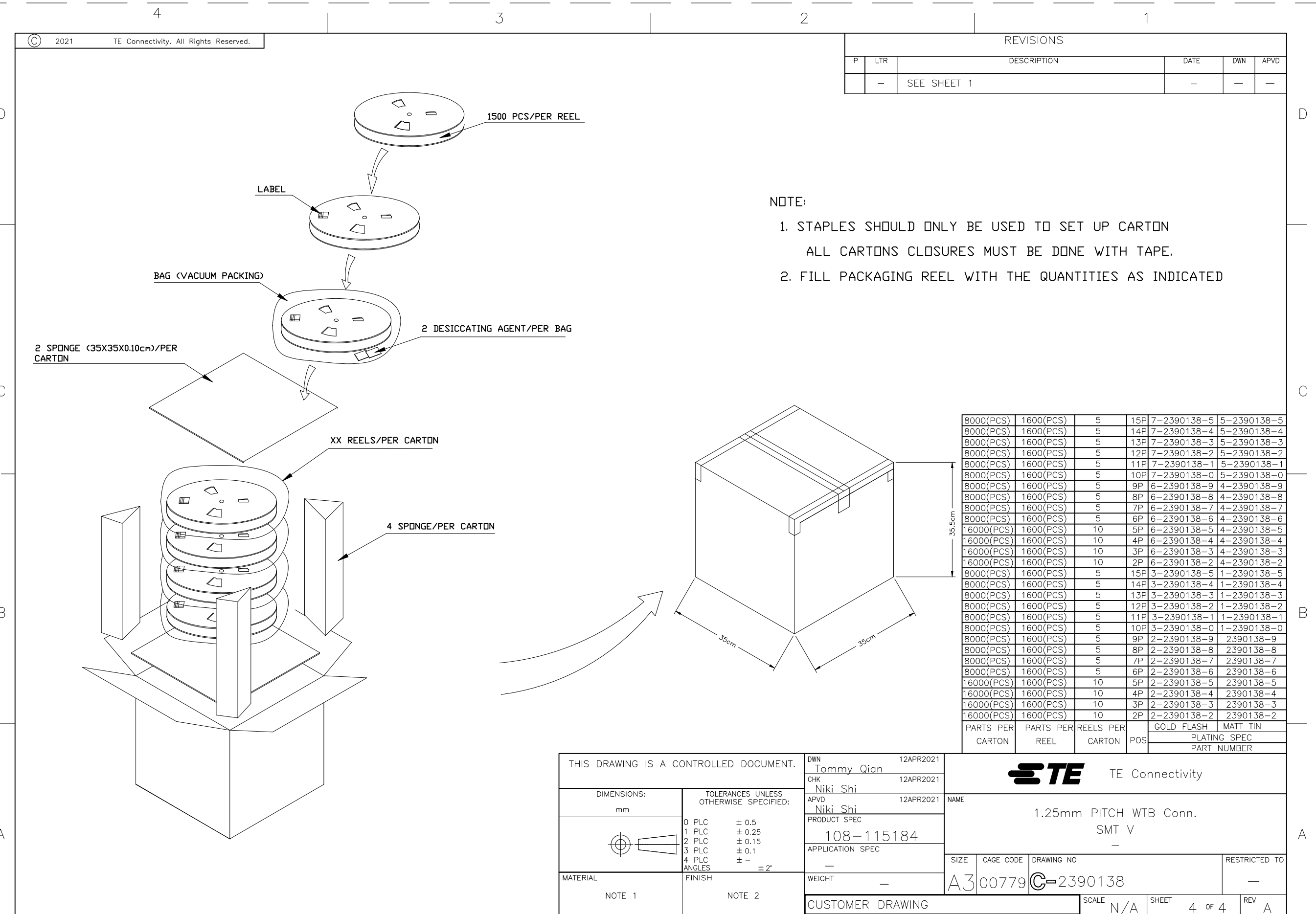
CKT.	W	F	S	B0
12				18.54
13	32.00	14.20	28.40	19.79
14				21.04
15				22.29

22.29				15P	7-2390138-5	5-2390138-5
21.04	28.40	14.20	32.00	14P	7-2390138-4	5-2390138-4
19.79				13P	7-2390138-3	5-2390138-3
18.54				12P	7-2390138-2	5-2390138-2
22.29				15P	3-2390138-5	1-2390138-5
21.04	28.40	14.20	32.00	14P	3-2390138-4	1-2390138-4
19.79				13P	3-2390138-3	1-2390138-3
18.54				12P	3-2390138-2	1-2390138-2
DIM B0	DIM S	DIM F	DIM W	POS	GOLD FLASH	MATT TIN
					PLATING SPEC	
					PART NUMBER	

THIS DRAWING IS A CONTROLLED DOCUMENT.		DWN Tommy Qian 12APR2021	TE Connectivity			
		CHK Niki Shi 12APR2021				
		APVD Niki Shi 12APR2021	NAME 1.25mm PITCH WTB Conn. SMT V			
		PRODUCT SPEC				
		APPLICATION SPEC	—			
		WEIGHT				
MATERIAL NOTE 1		FINISH NOTE 2	SIZE A3	CAGE CODE 00779	DRAWING NO C=2390138	RESTRICTED TO —
CUSTOMER DRAWING			SCALE N/A	SHEET 3 OF 4	REV A	

NOTE:

1. STAPLES SHOULD ONLY BE USED TO SET UP CARTON
ALL CARTONS CLOSURES MUST BE DONE WITH TAPE.
2. FILL PACKAGING REEL WITH THE QUANTITIES AS INDICATED



Mouser Electronics

Authorized Distributor

Click to View Pricing, Inventory, Delivery & Lifecycle Information:

[TE Connectivity:](#)

[4-2390138-7](#)