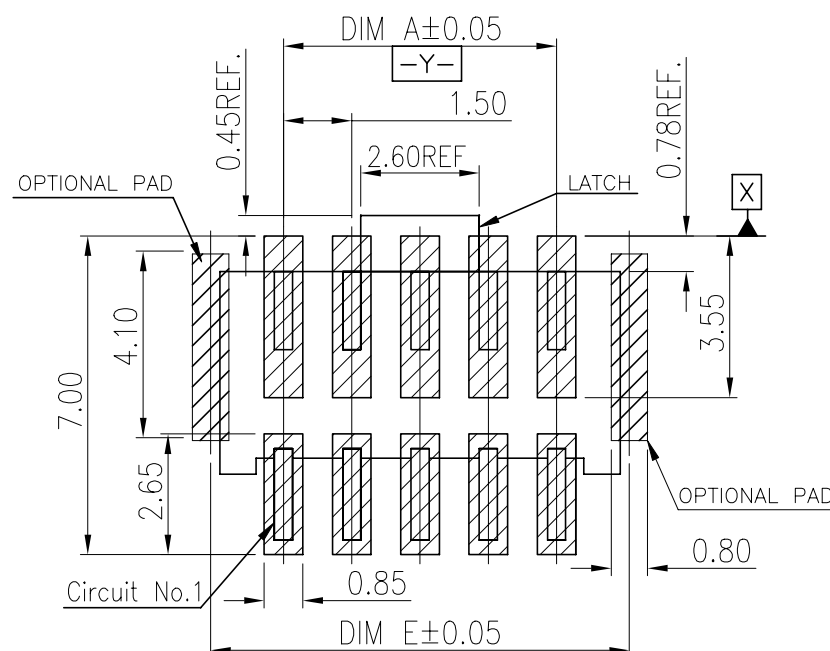


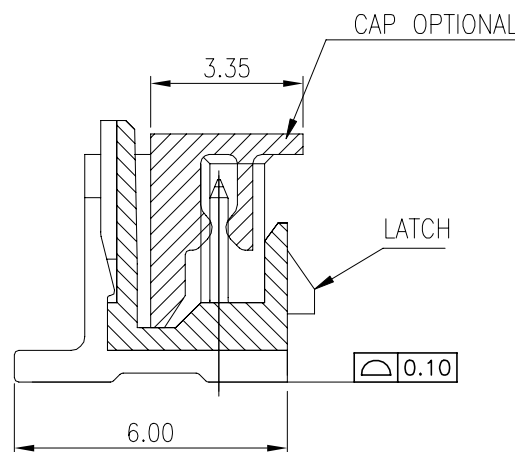
NOTES:

1. MATERIAL:
 - 1.1 HOUSING: HALOGEN FREE PLASTIC,UL94V-0.
 - 1.2 CONTACT: COPPER ALLOY
- 2.FINISH:
 - TYPE A: CONTACT: 50U" MIN. NICKEL UNDER PLATING OVERALL
100U" MIN. MATTE TIN PLATING ON CONTACT AREA AND SOLDER AREA.
 - TYPE B: CONTACT: 50U" MIN. NICKEL UNDER PLATING OVERALL
GOLD FLASH PLATING ON CONTACT AREA AND SOLDER AREA.
3. REFLOW SOLDER CAPABLE TO 260°C, PER PRODUCTION SPEC.



NOTES:

1. MATERIAL:
 - 1.1 HOUSING: HALOGEN FREE PLASTIC,UL94V-0.
 - 1.2 CONTACT: COPPER ALLOY
- 2.FINISH:
 - TYPE A: CONTACT: 50U" MIN. NICKEL UNDER PLATING OVERALL
100U" MIN. MATTE TIN PLATING ON CONTACT AREA AND SOLDER AREA.
 - TYPE B: CONTACT: 50U" MIN. NICKEL UNDER PLATING OVERALL
GOLD FLASH PLATING ON CONTACT AREA AND SOLDER AREA.
3. REFLOW SOLDER CAPABLE TO 260°C, PER PRODUCTION SPEC.

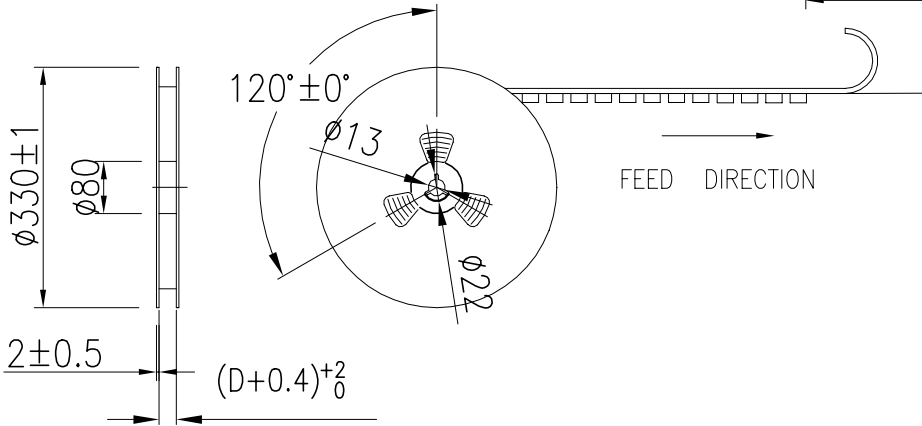
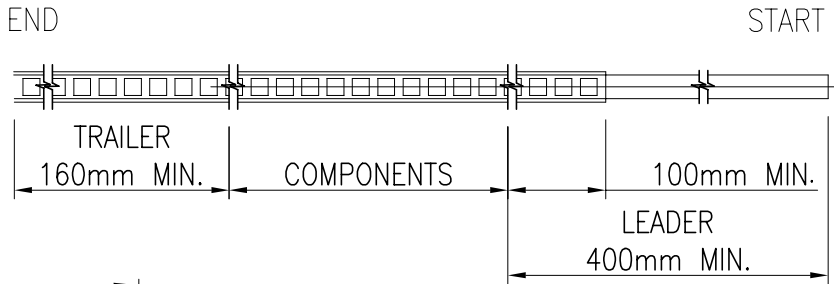


BLACK	4.7	3.4	3.8	4.3	1.5	2	6-2380320-2	4-2380320-2
	6.2	4.9	5.3	5.8	3.0	3	6-2380320-3	4-2380320-3
	7.7	6.4	6.8	7.3	4.5	4	6-2380320-4	4-2380320-4
	9.2	7.9	8.3	8.8	6.0	5	6-2380320-5	4-2380320-5
	10.7	9.4	9.8	10.3	7.5	6	6-2380320-6	4-2380320-6
	12.2	10.9	11.3	11.8	9.0	7	6-2380320-7	4-2380320-7
	13.7	12.4	12.8	13.3	10.5	8	6-2380320-8	4-2380320-8
	15.2	13.9	14.3	14.8	12.0	9	6-2380320-9	4-2380320-9
	16.7	15.4	15.8	16.3	13.5	10	7-2380320-0	5-2380320-0
	18.2	16.9	17.3	17.8	15.0	11	7-2380320-1	5-2380320-1
	19.7	18.4	18.8	19.3	16.5	12	7-2380320-2	5-2380320-2
	21.2	19.9	20.3	20.8	18.0	13	7-2380320-3	5-2380320-3
	22.7	21.4	21.8	22.3	19.5	14	7-2380320-4	5-2380320-4
	24.2	22.9	23.3	23.8	21.0	15	7-2380320-5	5-2380320-5
NATURAL	4.7	3.4	3.8	4.3	1.5	2	2-2380320-2	2380320-2
	6.2	4.9	5.3	5.8	3.0	3	2-2380320-3	2380320-3
	7.7	6.4	6.8	7.3	4.5	4	2-2380320-4	2380320-4
	9.2	7.9	8.3	8.8	6.0	5	2-2380320-5	2380320-5
	10.7	9.4	9.8	10.3	7.5	6	2-2380320-6	2380320-6
	12.2	10.9	11.3	11.8	9.0	7	2-2380320-7	2380320-7
	13.7	12.4	12.8	13.3	10.5	8	2-2380320-8	2380320-8
	15.2	13.9	14.3	14.8	12.0	9	2-2380320-9	2380320-9
	16.7	15.4	15.8	16.3	13.5	10	3-2380320-0	1-2380320-0
	18.2	16.9	17.3	17.8	15.0	11	3-2380320-1	1-2380320-1
	19.7	18.4	18.8	19.3	16.5	12	3-2380320-2	1-2380320-2
	21.2	19.9	20.3	20.8	18.0	13	3-2380320-3	1-2380320-3
	22.7	21.4	21.8	22.3	19.5	14	3-2380320-4	1-2380320-4
	24.2	22.9	23.3	23.8	21.0	15	3-2380320-5	1-2380320-5
COLOR	DIM.E	DIM.D	DIM.C	DIM.B	DIM.A	POS.NO.	TYPE B TYPE A	
							PLATING SPEC.	
							P/N	

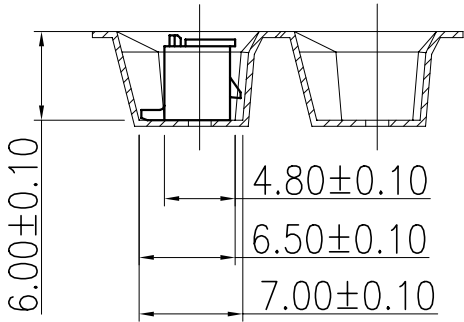
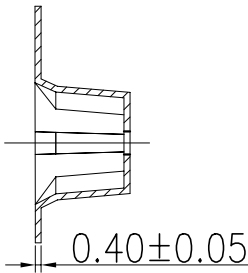
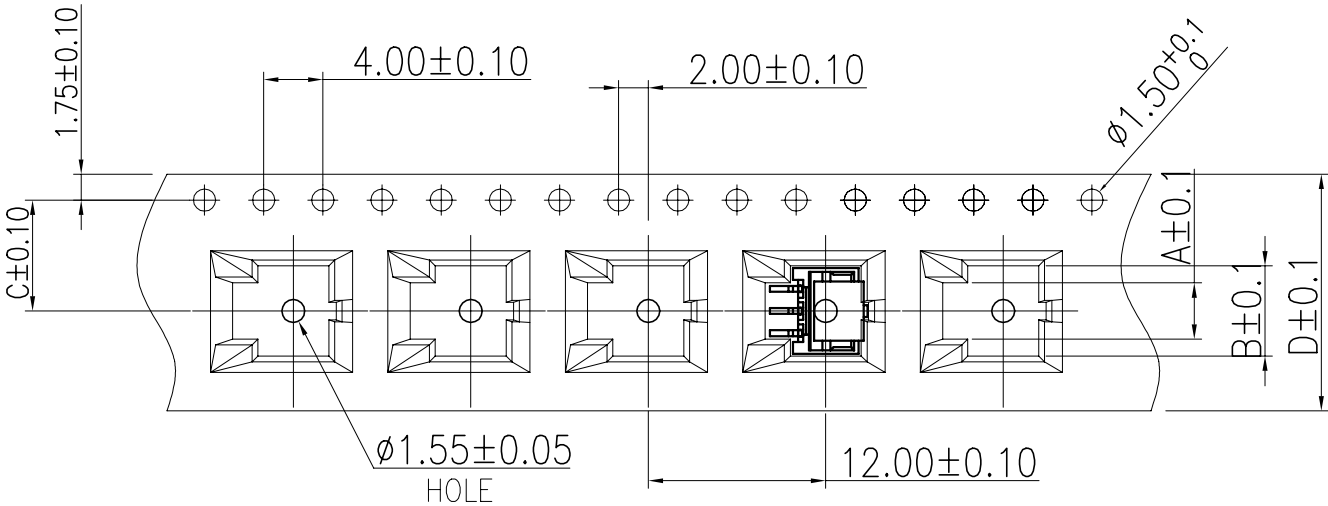
1470-19 (1/15)


REVISIONS					
P	LTR	DESCRIPTION	DATE	DWN	APVD
	-	SEE SHEET 1	-	-	-

POS. NO	DIM A	DIM B	DIM C	DIM D
2	2.30	4.60	7.50	16.00
3	3.80	6.10		
4	5.30	7.60		



- NOTES:
1. 10 SPROCKET HOLE PITCH CUMULATIVE TOLERANCE:±0.20mm
 2. CARRIER CAMBER NOT TO EXCEED 1mm IN 100mm.
 3. ALL DIMENSIONS MEET EIA-481-C REQUIREMENTS.
 4. MATERIAL: BLACK ANTI-STATIC POLYSTYRENE.
 5. THICKNESS: 0.40±0.05 mm.
 6. PACKING LENGHT PER 13” REEL : 12.4 METERS.
 7. COMPONENT LOAD PER 13” REEL : 950 PCS.
 8. PRODUCTS PLACEMENT MUST BE IN THE SAME DIRECTION.



THIS DRAWING IS A CONTROLLED DOCUMENT.		DWN	Jone Ji	23SEP2020	 TE Connectivity Ltd.		
		CHK	Wenke He	-			
		APVD	Wenke He	-	NAME		
		PRODUCT SPEC			1.5P WTB VERTICAL TYPE WITH LATCH		
		APPLICATION SPEC			-		
		WEIGHT			SIZE	CAGE CODE	DRAWING NO
		-			A3	00779	C=2380320
		CUSTOMER DRAWING			SCALE	SHEET	REV
		N/A			2 of 5	A	

REVISIONS					
P	LTR	DESCRIPTION	DATE	DWN	APVD
	-	SEE SHEET 1	-	-	-

D

C

B

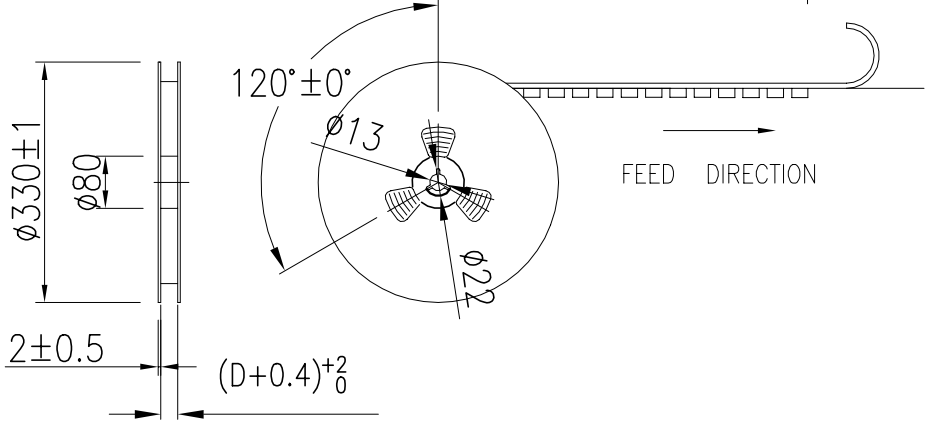
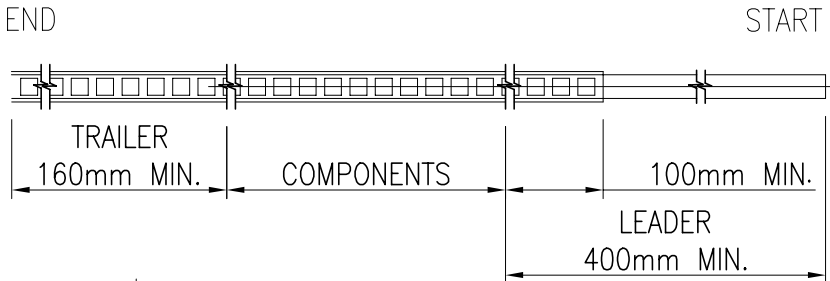
A

D

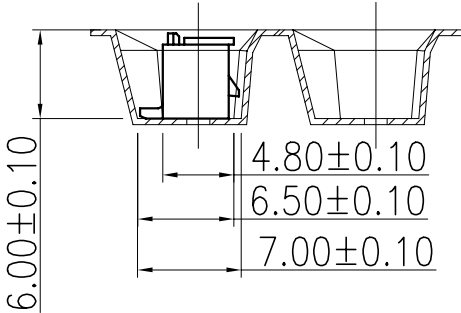
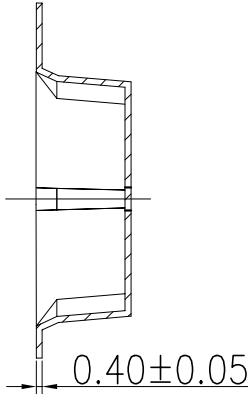
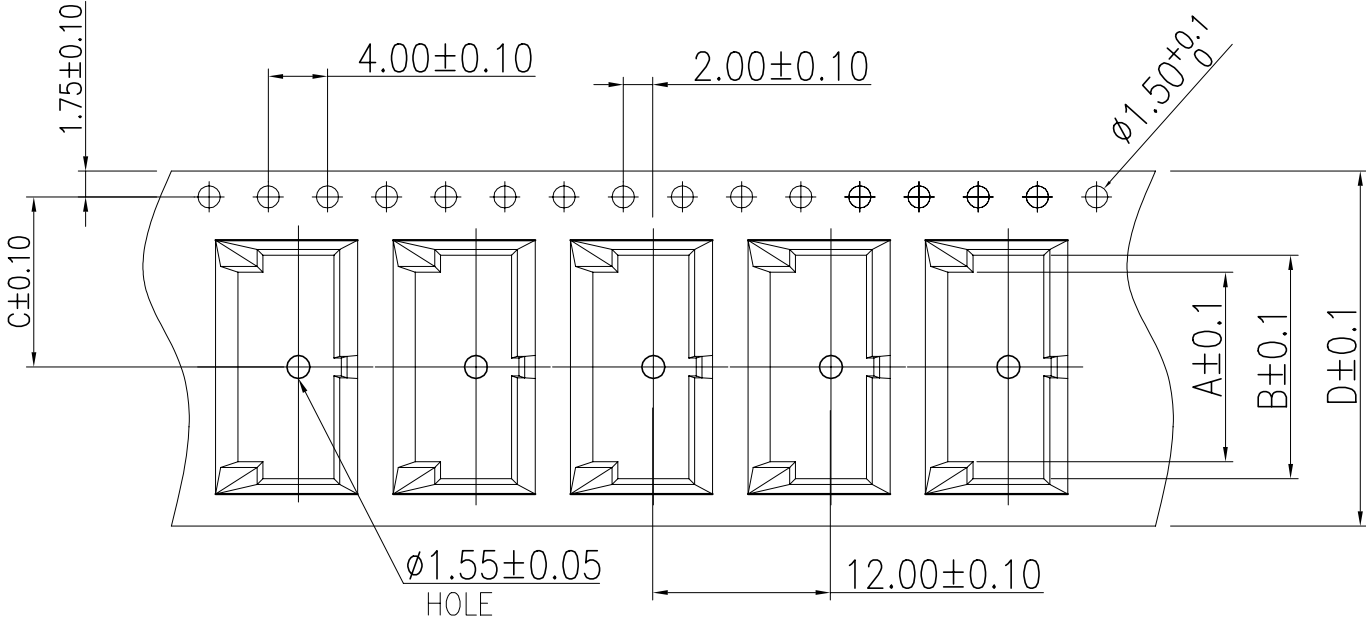
C


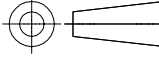
B

A



- NOTES:
1. 10 SPROCKET HOLE PITCH CUMULATIVE TOLERANCE:±0.20mm
 2. CARRIER CAMBER NOT TO EXCEED 1mm IN 100mm.
 3. ALL DIMENSIONS MEET EIA-481-C REQUIREMENTS.
 4. MATERIAL: BLACK ANTI-STATIC POLYSTYRENE.
 5. THICKNESS: 0.40±0.05 mm.
 6. PACKING LENGHT PER 13" REEL : 12.4 METERS.
 7. COMPONENT LOAD PER 13" REEL : 950 PCS.
 8. PRODUCTS PLACEMENT MUST BE IN THE SAME DIRECTION.

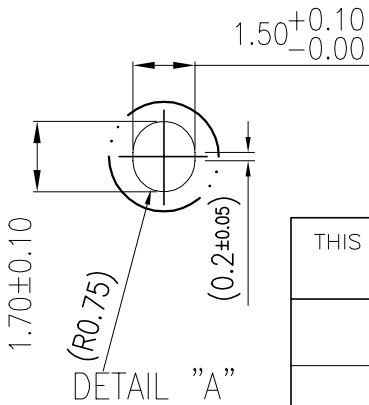
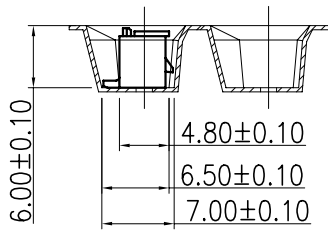
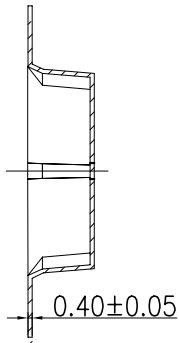
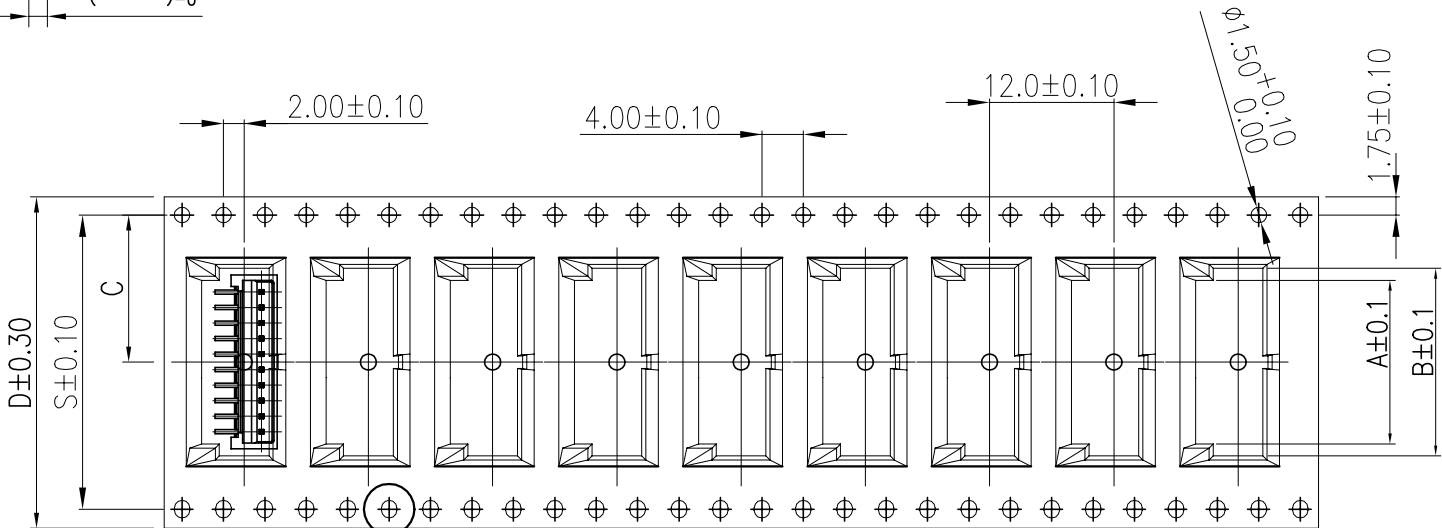
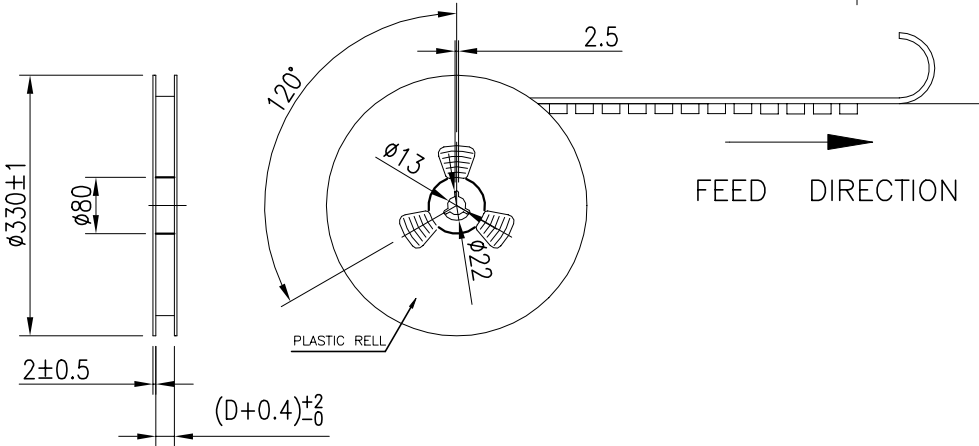
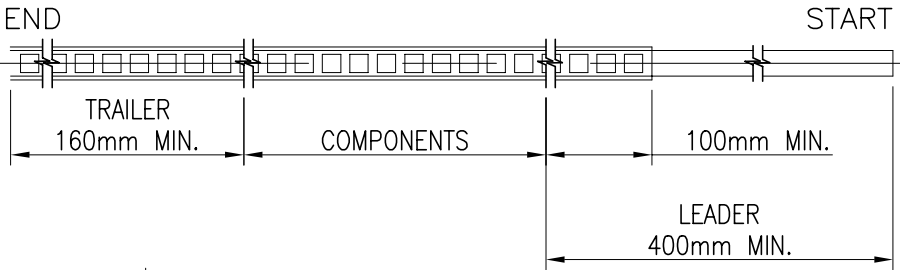


THIS DRAWING IS A CONTROLLED DOCUMENT.		DWN Jone Ji 23SEP2020	 TE Connectivity Ltd.		
DIMENSIONS: mm		CHK Wenke He			
		APVD Wenke He	NAME 1.5P WTB VERTICAL TYPE WITH LATCH		
		PRODUCT SPEC —	—		
MATERIAL SEE NOTE		FINISH —	APPLICATION SPEC —		RESTRICTED TO —
		WEIGHT	SIZE A3	CAGE CODE 00779	DRAWING NO C-2380320
CUSTOMER DRAWING			SCALE N/A	SHEET 3 of 5	REV A

P	LTR	DESCRIPTION	DATE	DWN	APVD
	-	SEE SHEET 1	-	-	-

POS. NO	DIM A	DIM B	DIM C	DIM D	DIM S
10	14.3	16.6	14.2	32	28.4
11	15.8	18.1			
12	17.3	19.6			
13	18.8	21.1	20.2	44	40.4
14	20.3	22.6			
15	21.8	24.1			
16	23.3	25.6			
17	24.8	27.1			
18	26.3	28.6			
19	27.8	30.1			
20	29.3	31.6			

- NOTES:
- 10 SPROCKET HOLE PITCH CUMULATIVE TOLERANCE:±0.20mm
 - CARRIER CAMBER NOT TO EXCEED 1mm IN 100mm.
 - ALL DIMENSIONS MEET EIA-481-C REQUIREMENTS.
 - MATERIAL: BLACK ANTI-STATIC POLYSTYRENE.
 - THICKNESS: 0.40±0.05 mm.
 - PACKING LENGHT PER 13" REEL : 12.4 METERS.
 - COMPONENT LOAD PER 13" REEL : 950 PCS.
 - PRODUCTS PLACEMENT MUST BE IN THE SAME DIRECTION.



THIS DRAWING IS A CONTROLLED DOCUMENT.

DIMENSIONS:

mm

TOLERANCES UNLESS OTHERWISE SPECIFIED:

0 PLC ± 0.5

1 PLC ± 0.35

2 PLC ± 0.25

3 PLC ± 0.15

4 PLC ± -

ANGLES ± 2°

MATERIAL

SEE NOTE

DWN 23SEP2020

CHK Jone Ji

APVD Wenke He

PRODUCT SPEC Wenke He

APPLICATION SPEC

WEIGHT

NAME

1.5P WTB VERTICAL TYPE WITH LATCH

SIZE A3

CAGE CODE 00779

DRAWING NO C-2380320

RESTRICTED TO

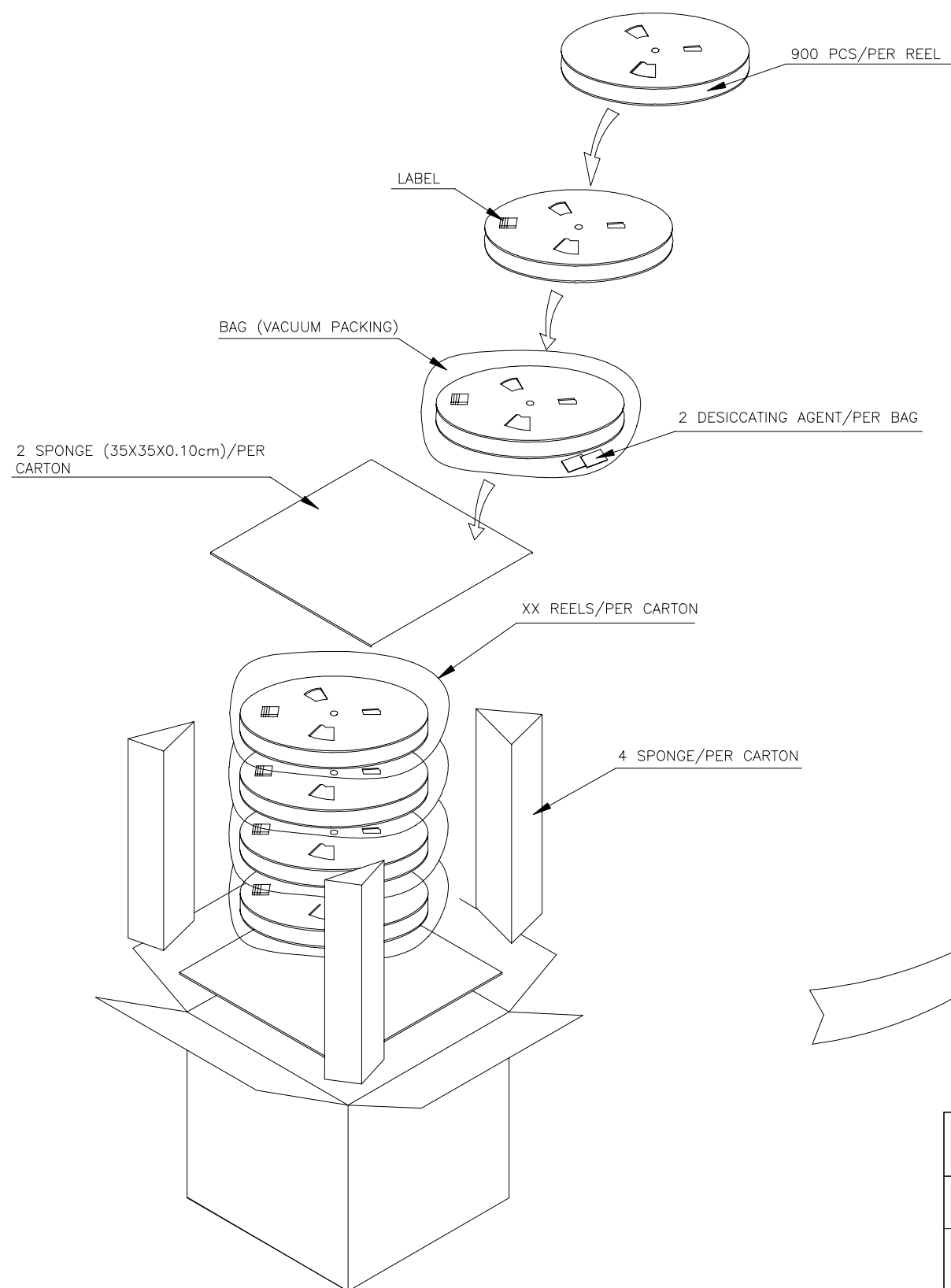
CUSTOMER DRAWING

SCALE N/A

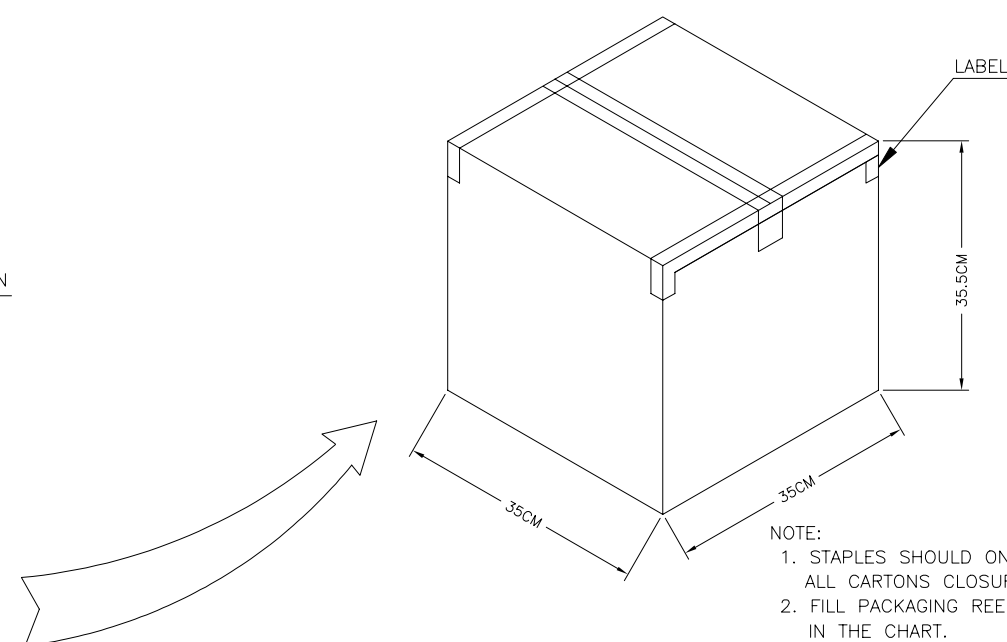
SHEET 4 of 5

REV A

P	LTR	DESCRIPTION	DATE	DWN	APVD
	—	SEE SHEET 1	—	—	—


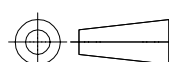


POS.NO.	PARTS PER PRIMARY CARTON	PARTS PER REEL	TOTAL REELS PER PRIMARY CARTON
2	15200(PCS)	950(PCS)	16
3	15200(PCS)	950(PCS)	16
4	15200(PCS)	950(PCS)	16
5	10450(PCS)	950(PCS)	11
6	10450(PCS)	950(PCS)	11
7	10450(PCS)	950(PCS)	11
8	10450(PCS)	950(PCS)	11
9	10450(PCS)	950(PCS)	11
10	8550(PCS)	950(PCS)	9
11	8550(PCS)	950(PCS)	9
12	8550(PCS)	950(PCS)	9
13	6650(PCS)	950(PCS)	7
14	6650(PCS)	950(PCS)	7
15	6650(PCS)	950(PCS)	7



NOTE:

1. STAPLES SHOULD ONLY BE USED TO SET UP CARTON
ALL CARTONS CLOSURES MUST BE DONE WITH TAPE.
2. FILL PACKAGING REEL WITH THE QUANTITIES AS INDICATED
IN THE CHART.

THIS DRAWING IS A CONTROLLED DOCUMENT.		DWN Jones Jj 23SEP2020		 TE Connectivity Ltd.	
DIMENSIONS: mm		CHK Wenke He			
TOLERANCES UNLESS OTHERWISE SPECIFIED:		APVD Wenke He		NAME 1.5P WTB VERTICAL TYPE WITH LATCH	
		PRODUCT SPEC —			
0 PLC ± 0.5 1 PLC ± 0.35 2 PLC ± 0.25 3 PLC ± 0.15 4 PLC ± — ANGLES ± 2°		APPLICATION SPEC —		SIZE A3	
MATERIAL SEE NOTE		WEIGHT —		CAGE CODE 00779	
FINISH —		CUSTOMER DRAWING		DRAWING NO C-2380320	
				RESTRICTED TO —	
				SCALE N/A	
				SHEET 5 OF 5	
				REV A	

Mouser Electronics

Authorized Distributor

Click to View Pricing, Inventory, Delivery & Lifecycle Information:

[TE Connectivity:](#)

[2380320-2](#)