

4

3

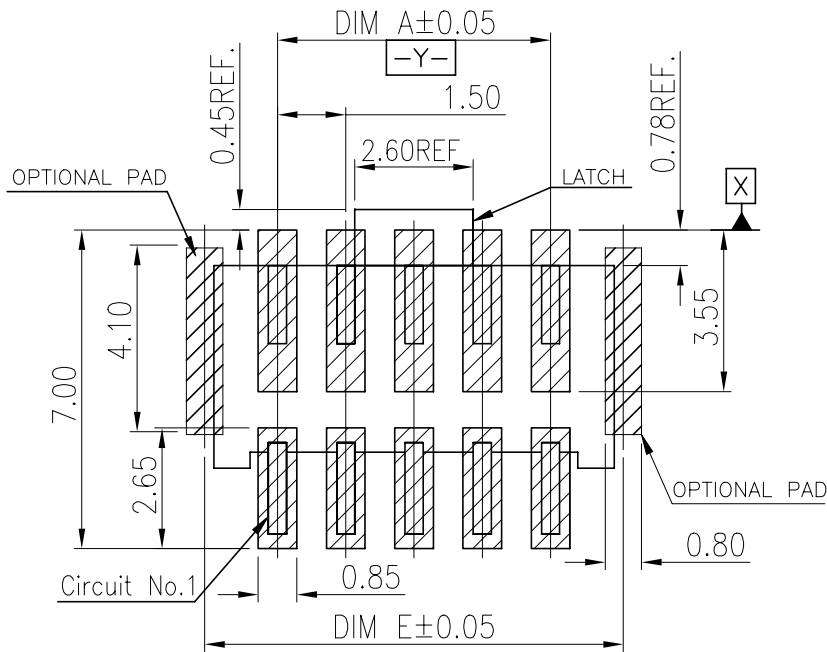
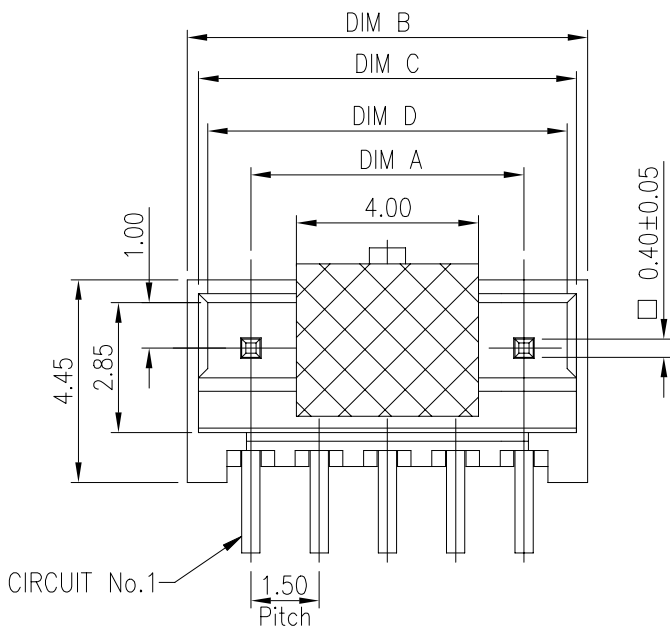
2

1

© - TE Connectivity. All Rights Reserved.

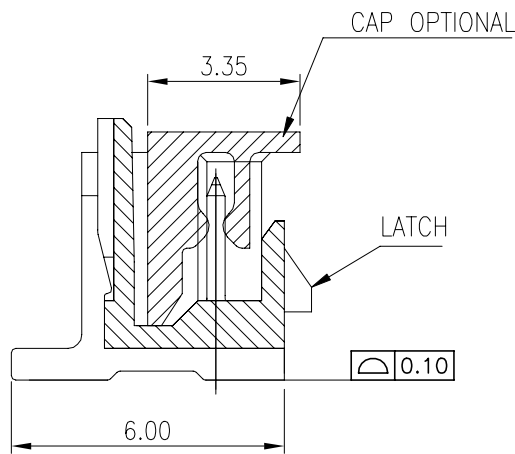
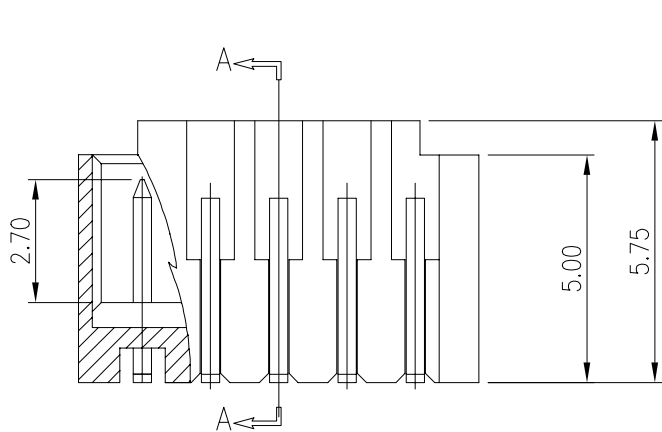
REVISIONS

P	LTR	DESCRIPTION	DATE	DWN	APVD
	A	ECR-21-108912	08MAY2021	T.Q	N.S



RECOMMENDED PCB LAYOUT FOR *-2380320-*
TOLERANCE ± 0.05

- NOTES:
- MATERIAL:
 - HOUSING: HALOGEN FREE PLASTIC,UL94V-0.
 - CONTACT: COPPER ALLOY
 - FINISH:
 - TYPE A: CONTACT: 50U" MIN. NICKEL UNDER PLATING OVERALL
100U" MIN. MATTE TIN PLATING ON CONTACT AREA AND SOLDER AREA.
 - TYPE B: CONTACT: 50U" MIN. NICKEL UNDER PLATING OVERALL
GOLD FLASH PLATING ON CONTACT AREA AND SOLDER AREA.
 - REFLOW SOLDER CAPABLE TO 260°C, PER PRODUCTION SPEC.



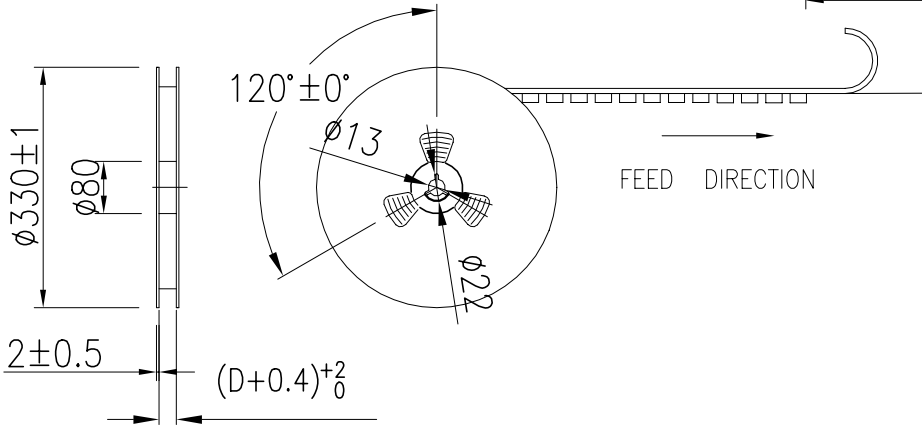
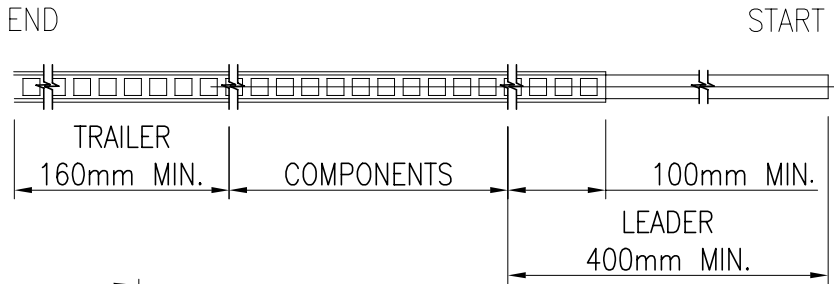
SEC. A-A

BLACK	4.7	3.4	3.8	4.3	1.5	2	6-2380320-2	4-2380320-2
	6.2	4.9	5.3	5.8	3.0	3	6-2380320-3	4-2380320-3
	7.7	6.4	6.8	7.3	4.5	4	6-2380320-4	4-2380320-4
	9.2	7.9	8.3	8.8	6.0	5	6-2380320-5	4-2380320-5
	10.7	9.4	9.8	10.3	7.5	6	6-2380320-6	4-2380320-6
	12.2	10.9	11.3	11.8	9.0	7	6-2380320-7	4-2380320-7
	13.7	12.4	12.8	13.3	10.5	8	6-2380320-8	4-2380320-8
	15.2	13.9	14.3	14.8	12.0	9	6-2380320-9	4-2380320-9
	16.7	15.4	15.8	16.3	13.5	10	7-2380320-0	5-2380320-0
	18.2	16.9	17.3	17.8	15.0	11	7-2380320-1	5-2380320-1
	19.7	18.4	18.8	19.3	16.5	12	7-2380320-2	5-2380320-2
	21.2	19.9	20.3	20.8	18.0	13	7-2380320-3	5-2380320-3
	22.7	21.4	21.8	22.3	19.5	14	7-2380320-4	5-2380320-4
	24.2	22.9	23.3	23.8	21.0	15	7-2380320-5	5-2380320-5
NATURAL	4.7	3.4	3.8	4.3	1.5	2	2-2380320-2	2380320-2
	6.2	4.9	5.3	5.8	3.0	3	2-2380320-3	2380320-3
	7.7	6.4	6.8	7.3	4.5	4	2-2380320-4	2380320-4
	9.2	7.9	8.3	8.8	6.0	5	2-2380320-5	2380320-5
	10.7	9.4	9.8	10.3	7.5	6	2-2380320-6	2380320-6
	12.2	10.9	11.3	11.8	9.0	7	2-2380320-7	2380320-7
	13.7	12.4	12.8	13.3	10.5	8	2-2380320-8	2380320-8
	15.2	13.9	14.3	14.8	12.0	9	2-2380320-9	2380320-9
	16.7	15.4	15.8	16.3	13.5	10	3-2380320-0	1-2380320-0
	18.2	16.9	17.3	17.8	15.0	11	3-2380320-1	1-2380320-1
	19.7	18.4	18.8	19.3	16.5	12	3-2380320-2	1-2380320-2
	21.2	19.9	20.3	20.8	18.0	13	3-2380320-3	1-2380320-3
	22.7	21.4	21.8	22.3	19.5	14	3-2380320-4	1-2380320-4
	24.2	22.9	23.3	23.8	21.0	15	3-2380320-5	1-2380320-5
COLOR	DIM.E	DIM.D	DIM.C	DIM.B	DIM.A	POS.NO.	TYPE B	TYPE A
							PLATING SPEC.	
							P/N	

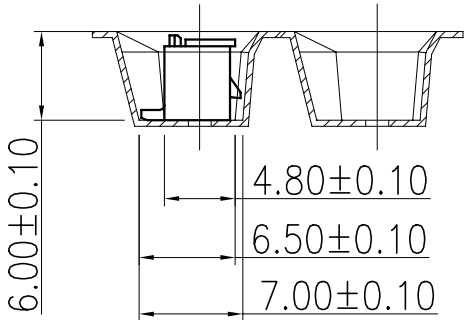
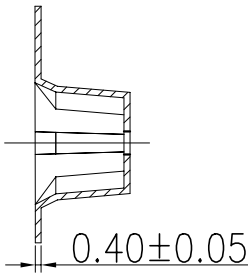
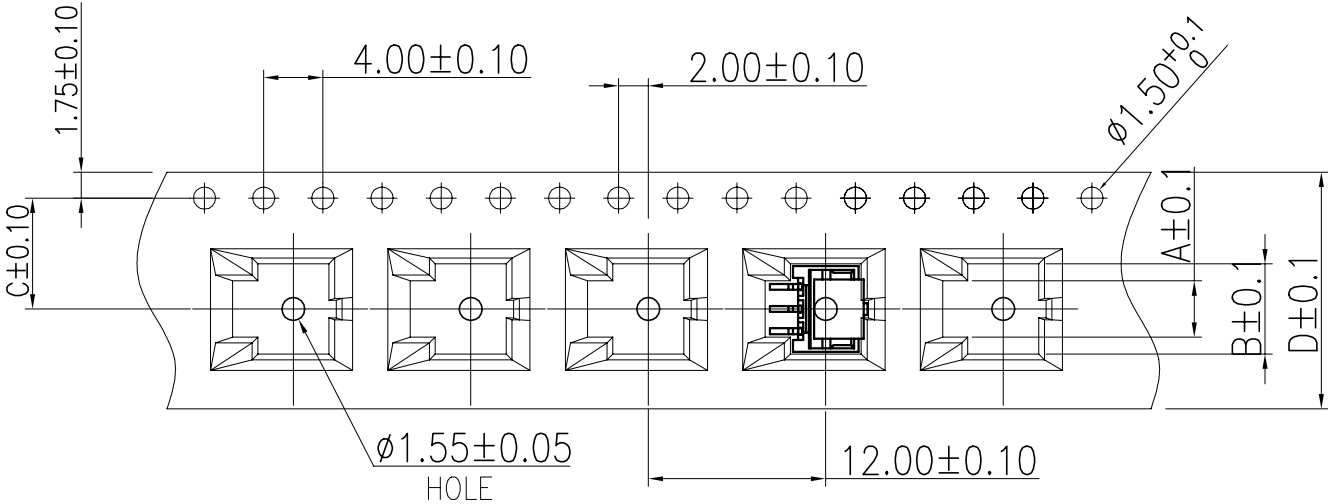
THIS DRAWING IS A CONTROLLED DOCUMENT.		DWN	23SEP2020		TE Connectivity Ltd.												
		CHK	-														
DIMENSIONS:		TOLERANCES UNLESS OTHERWISE SPECIFIED:		NAME		1.5P WTB VERTICAL TYPE WITH LATCH											
mm																	
		0 PLC ± 0.5		APVD		SIZE			CAGE CODE			DRAWING NO			RESTRICTED TO		
		1 PLC ± 0.35		Wenke He													
		2 PLC ± 0.25		PRODUCT SPEC													
		3 PLC ± 0.15		APPLICATION SPEC													
		4 PLC ± -		WEIGHT													
		ANGLES ± 2'		CUSTOMER DRAWING													
MATERIAL		FINISH		SCALE		N/A			SHEET			1 of 5			REV		
SEE NOTE		-															

REVISIONS					
P	LTR	DESCRIPTION	DATE	DWN	APVD
	-	SEE SHEET 1	-	-	-

POS. NO	DIM A	DIM B	DIM C	DIM D
2	2.30	4.60	7.50	16.00
3	3.80	6.10		
4	5.30	7.60		



- NOTES:
- 1. 10 SPROCKET HOLE PITCH CUMULATIVE TOLERANCE:±0.20mm
 - 2. CARRIER CAMBER NOT TO EXCEED 1mm IN 100mm.
 - 3. ALL DIMENSIONS MEET EIA-481-C REQUIREMENTS.
 - 4. MATERIAL: BLACK ANTI-STATIC POLYSTYRENE.
 - 5. THICKNESS: 0.40±0.05 mm.
 - 6. PACKING LENGHT PER 13” REEL : 12.4 METERS.
 - 7. COMPONENT LOAD PER 13” REEL : 950 PCS.
 - 8. PRODUCTS PLACEMENT MUST BE IN THE SAME DIRECTION.



THIS DRAWING IS A CONTROLLED DOCUMENT.		DWN Jone Ji 23SEP2020	<div>TE Connectivity Ltd.</div>		
DIMENSIONS: mm		CHK Wenke He			
		APVD Wenke He	NAME 1.5P WTB VERTICAL TYPE WITH LATCH		
		PRODUCT SPEC —	—		
TOLERANCES UNLESS OTHERWISE SPECIFIED:		APPLICATION SPEC —	SIZE A3	CAGE CODE 00779	DRAWING NO C-2380320
MATERIAL SEE NOTE		FINISH —	WEIGHT —	RESTRICTED TO —	
CUSTOMER DRAWING			SCALE N/A	SHEET 2 of 5	REV A

REVISIONS					
P	LTR	DESCRIPTION	DATE	DWN	APVD
	-	SEE SHEET 1	-	-	-

D

C

B

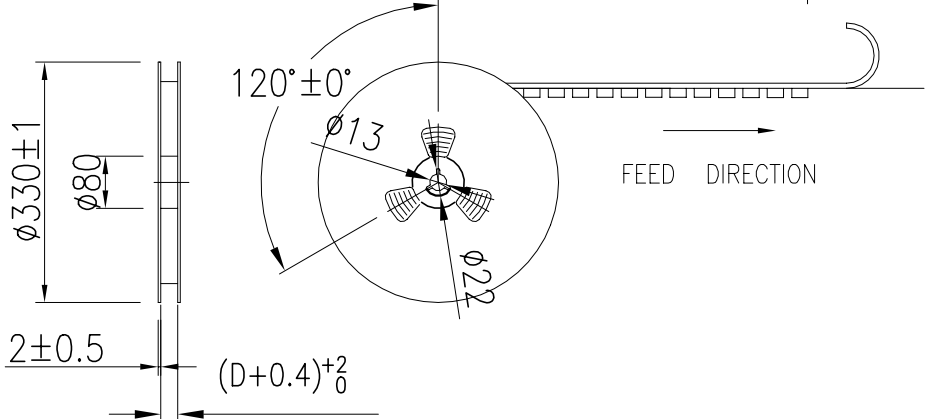
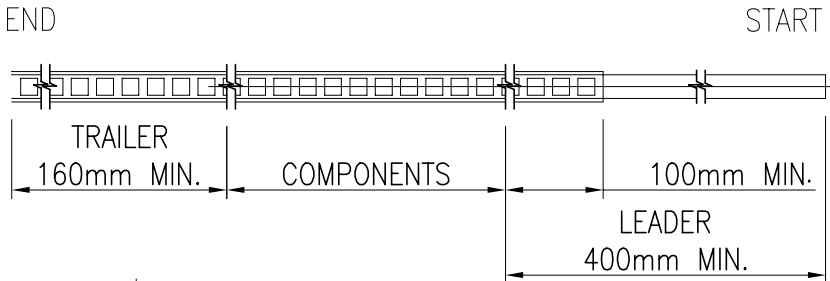
A

D

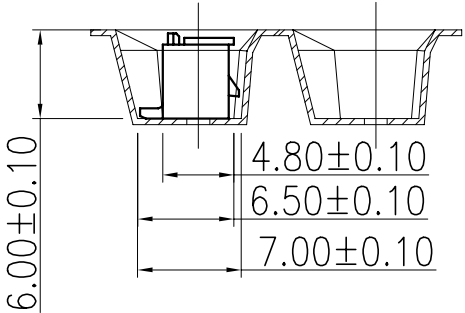
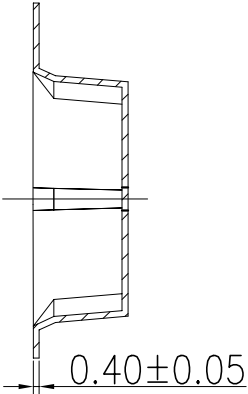
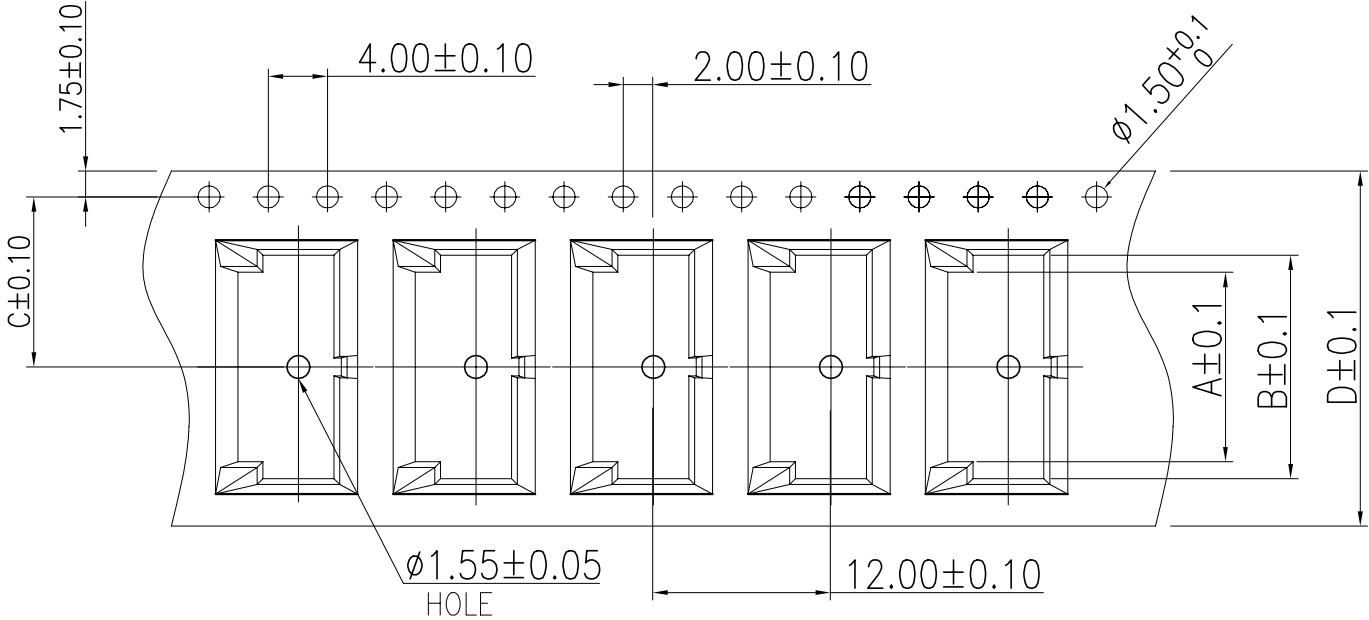
C


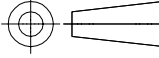
B

A



- NOTES:
1. 10 SPROCKET HOLE PITCH CUMULATIVE TOLERANCE:±0.20mm
 2. CARRIER CAMBER NOT TO EXCEED 1mm IN 100mm.
 3. ALL DIMENSIONS MEET EIA-481-C REQUIREMENTS.
 4. MATERIAL: BLACK ANTI-STATIC POLYSTYRENE.
 5. THICKNESS: 0.40±0.05 mm.
 6. PACKING LENGHT PER 13" REEL : 12.4 METERS.
 7. COMPONENT LOAD PER 13" REEL : 950 PCS.
 8. PRODUCTS PLACEMENT MUST BE IN THE SAME DIRECTION.



THIS DRAWING IS A CONTROLLED DOCUMENT.		DWN Jone Ji 23SEP2020	 TE Connectivity Ltd.		
DIMENSIONS: mm		CHK Wenke He			
		APVD Wenke He	NAME 1.5P WTB VERTICAL TYPE WITH LATCH		
		PRODUCT SPEC —			
MATERIAL SEE NOTE		FINISH —	SIZE A3		
		—			
		WEIGHT	CAGE CODE 00779		
		CUSTOMER DRAWING	DRAWING NO C-2380320		
		SCALE N/A	RESTRICTED TO —		
		SHEET 3 of 5	REV A		

P	LTR	DESCRIPTION	DATE	DWN	APVD
	-	SEE SHEET 1	-	-	-

POS. NO	DIM A	DIM B	DIM C	DIM D	DIM S
10	14.3	16.6	14.2	32	28.4
11	15.8	18.1			
12	17.3	19.6			
13	18.8	21.1	20.2	44	40.4
14	20.3	22.6			
15	21.8	24.1			
16	23.3	25.6			
17	24.8	27.1			
18	26.3	28.6			
19	27.8	30.1			
20	29.3	31.6			

- NOTES:
- 10 SPROCKET HOLE PITCH CUMULATIVE TOLERANCE:±0.20mm
 - CARRIER CAMBER NOT TO EXCEED 1mm IN 100mm.
 - ALL DIMENSIONS MEET EIA-481-C REQUIREMENTS.
 - MATERIAL: BLACK ANTI-STATIC POLYSTYRENE.
 - THICKNESS: 0.40±0.05 mm.
 - PACKING LENGHT PER 13" REEL : 12.4 METERS.
 - COMPONENT LOAD PER 13" REEL : 950 PCS.
 - PRODUCTS PLACEMENT MUST BE IN THE SAME DIRECTION.

D

C

B

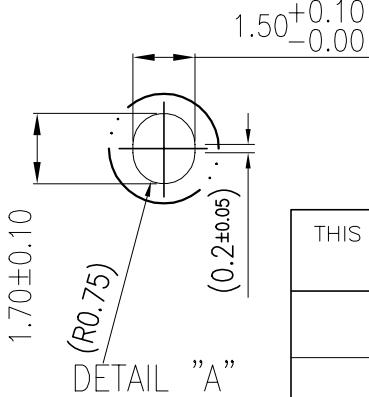
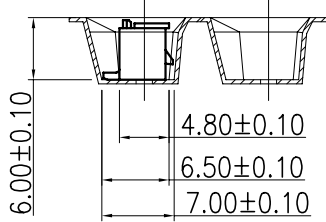
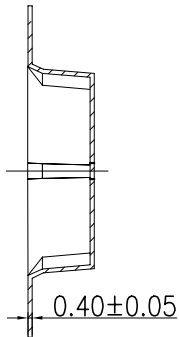
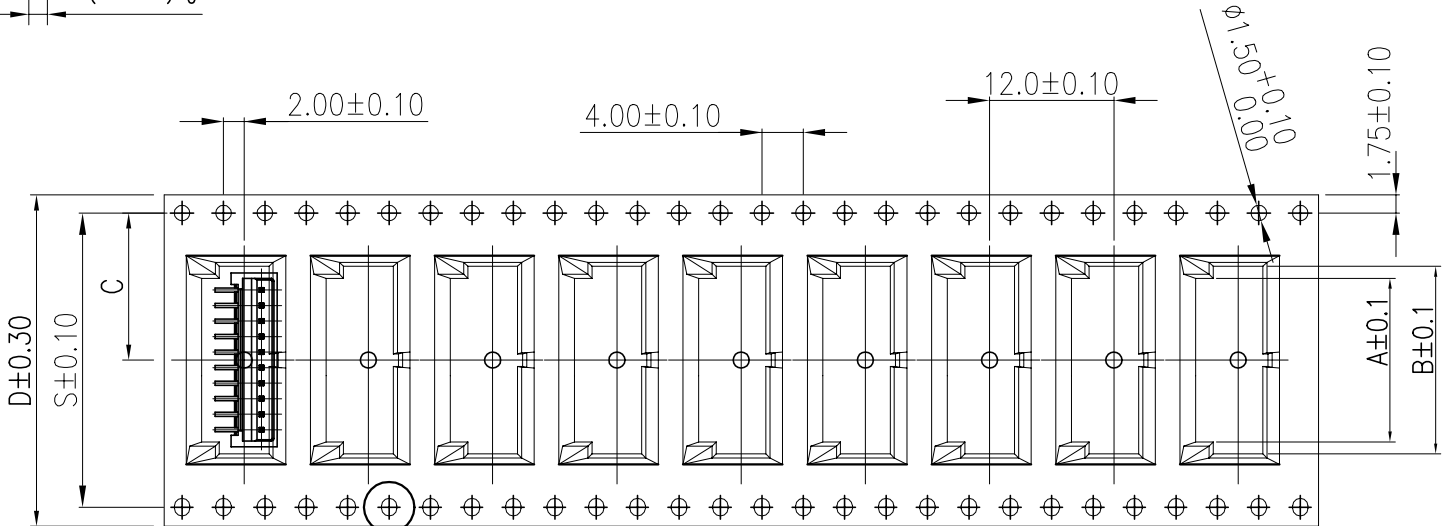
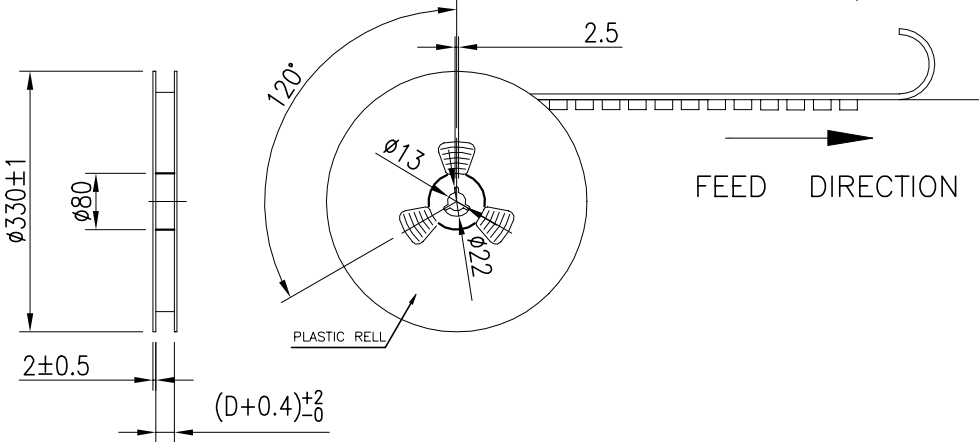
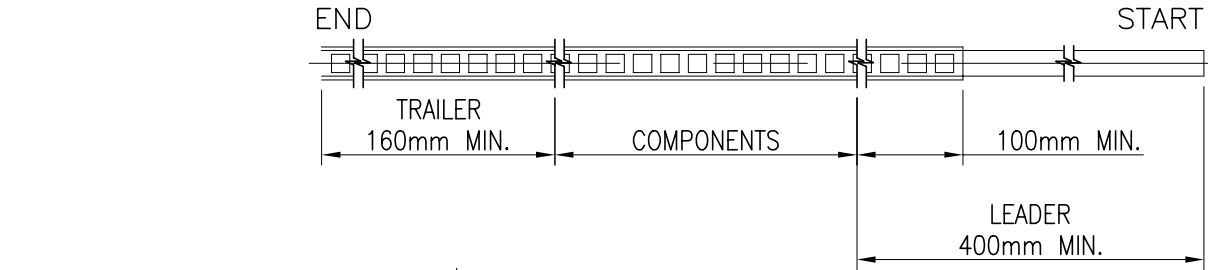
A


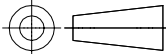
D

C

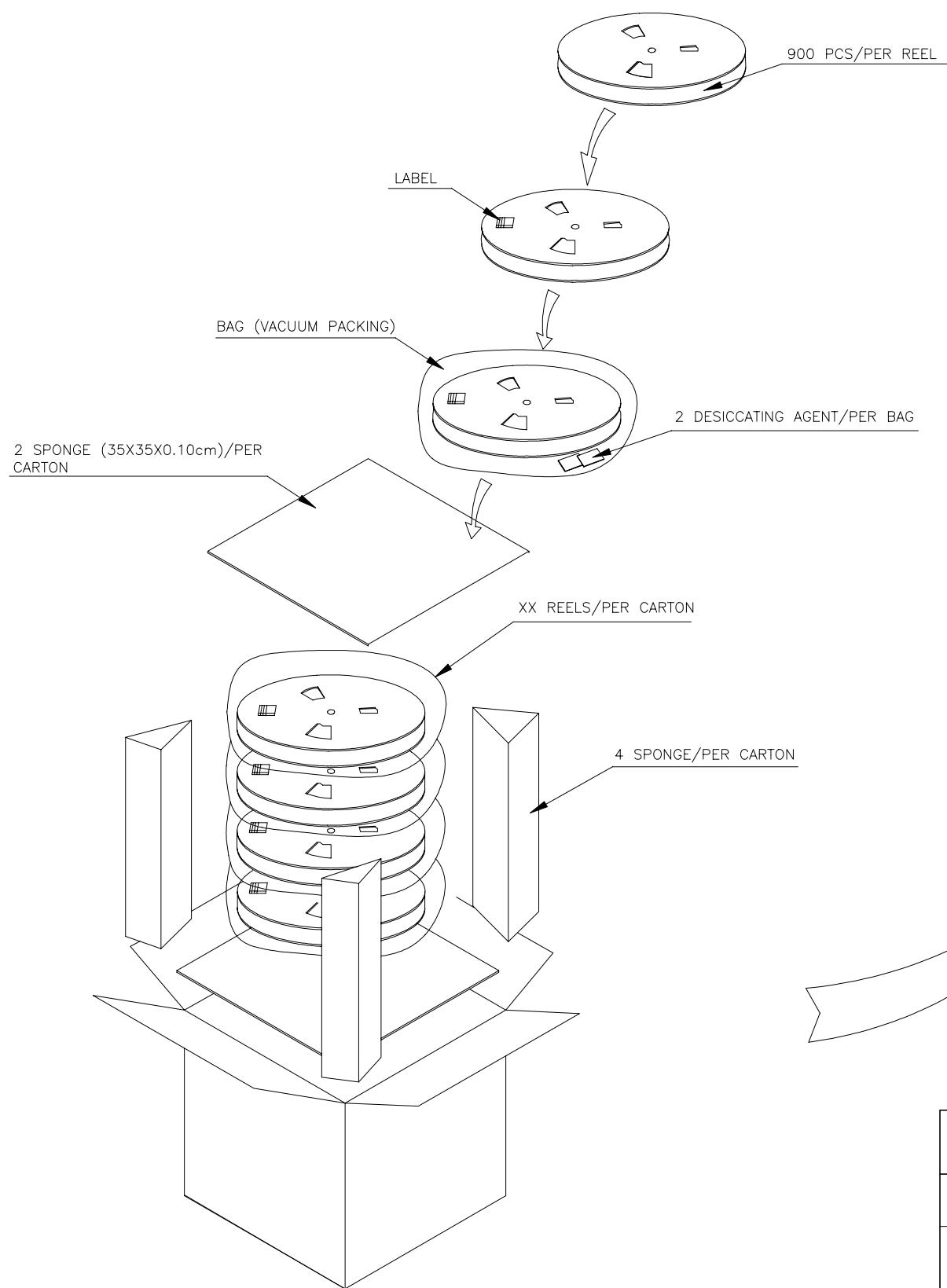
B

A

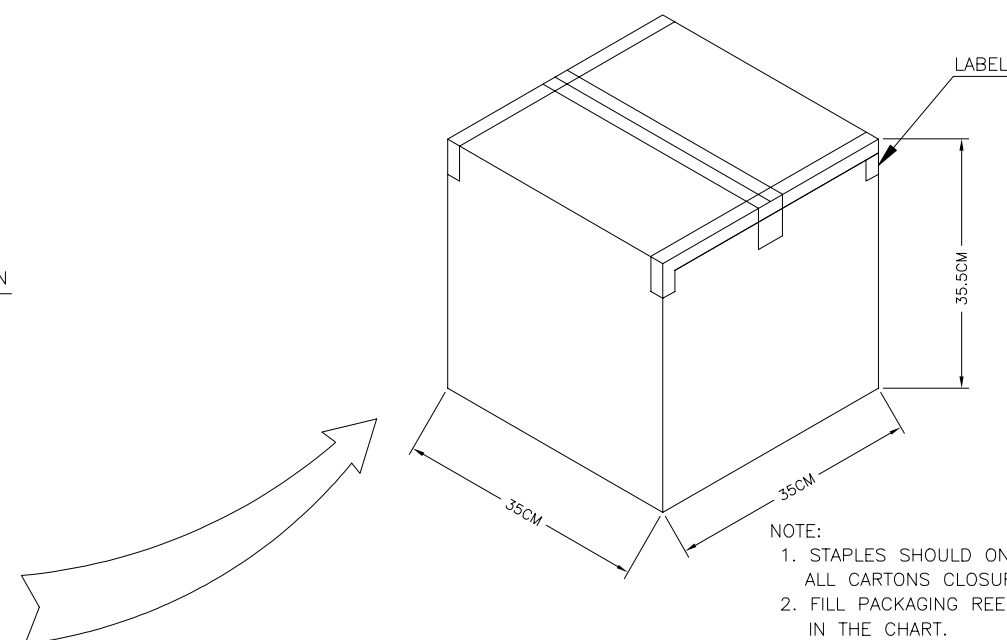


THIS DRAWING IS A CONTROLLED DOCUMENT.		DWN	23SEP2020		<div></div> TE Connectivity Ltd.					
		CHK	Wenke He							
DIMENSIONS: mm	<div>TOLERANCES UNLESS OTHERWISE SPECIFIED:</div> <div><div>0 PLC± 0.5</div><div>1 PLC± 0.35</div><div>2 PLC± 0.25</div><div>3 PLC± 0.15</div><div>4 PLC± —</div><div>ANGLES± 2°</div></div>	APVD	Wenke He		NAME 1.5P WTB VERTICAL TYPE WITH LATCH —					
		PRODUCT SPEC	—							
		APPLICATION SPEC	—							
MATERIAL		FINISH	WEIGHT	A300779		DRAWING NO C-2380320		RESTRICTED TO		
SEE NOTE		—						—		
CUSTOMER DRAWING					SCALE	N/A	SHEET	4 OF 5	REV	A

P	LTR	DESCRIPTION	DATE	DWN	APVD
	—	SEE SHEET 1	—	—	—


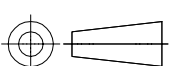


POS.NO.	PARTS PER PRIMARY CARTON	PARTS PER REEL	TOTAL REELS PER PRIMARY CARTON
2	15200(PCS)	950(PCS)	16
3	15200(PCS)	950(PCS)	16
4	15200(PCS)	950(PCS)	16
5	10450(PCS)	950(PCS)	11
6	10450(PCS)	950(PCS)	11
7	10450(PCS)	950(PCS)	11
8	10450(PCS)	950(PCS)	11
9	10450(PCS)	950(PCS)	11
10	8550(PCS)	950(PCS)	9
11	8550(PCS)	950(PCS)	9
12	8550(PCS)	950(PCS)	9
13	6650(PCS)	950(PCS)	7
14	6650(PCS)	950(PCS)	7
15	6650(PCS)	950(PCS)	7



NOTE:

1. STAPLES SHOULD ONLY BE USED TO SET UP CARTON
ALL CARTONS CLOSURES MUST BE DONE WITH TAPE.
2. FILL PACKAGING REEL WITH THE QUANTITIES AS INDICATED
IN THE CHART.

THIS DRAWING IS A CONTROLLED DOCUMENT.		DWN Jones Jj 23SEP2020		 TE Connectivity Ltd.	
DIMENSIONS: mm		CHK Wenke He			
TOLERANCES UNLESS OTHERWISE SPECIFIED:		APVD Wenke He		NAME 1.5P WTB VERTICAL TYPE WITH LATCH	
		PRODUCT SPEC —			
0 PLC ± 0.5 1 PLC ± 0.35 2 PLC ± 0.25 3 PLC ± 0.15 4 PLC ± — ANGLES ± 2°		APPLICATION SPEC —		SIZE A3	
MATERIAL SEE NOTE		WEIGHT —		CAGE CODE 00779	
FINISH —		CUSTOMER DRAWING		DRAWING NO C-2380320	
				RESTRICTED TO —	
				SCALE N/A	
				SHEET 5 OF 5	
				REV A	

Mouser Electronics

Authorized Distributor

Click to View Pricing, Inventory, Delivery & Lifecycle Information:

[TE Connectivity:](#)

[2380320-6](#)