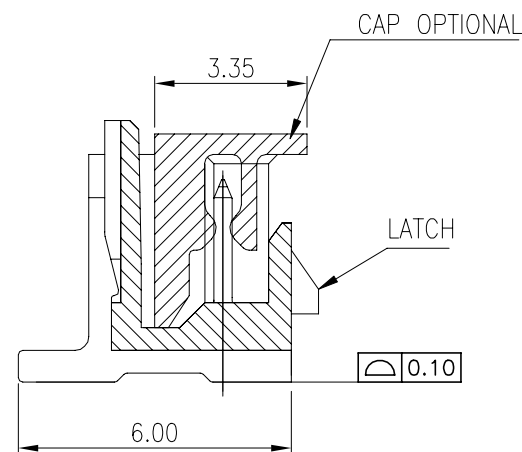


3. REFLOW SOLDER CAPABLE TO 260°C, PER PRODUCTION SPEC.

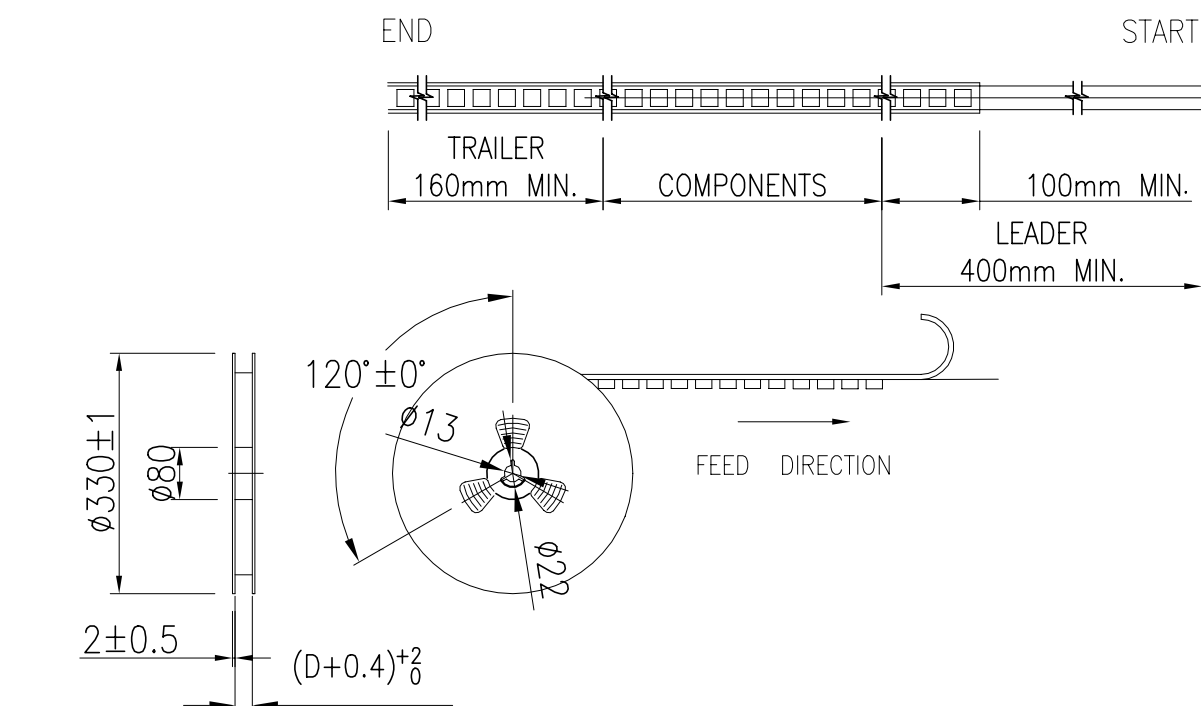
TOLERANCE ± 0.05 

SEC. A-A

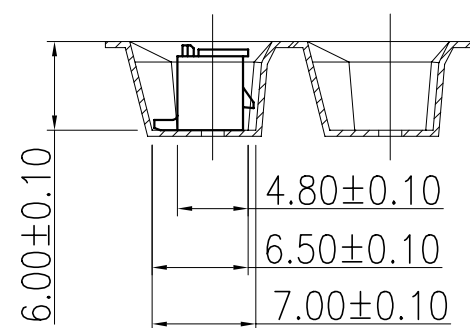
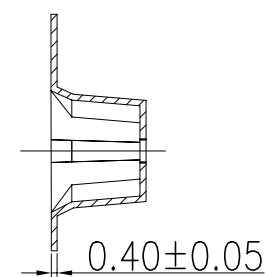
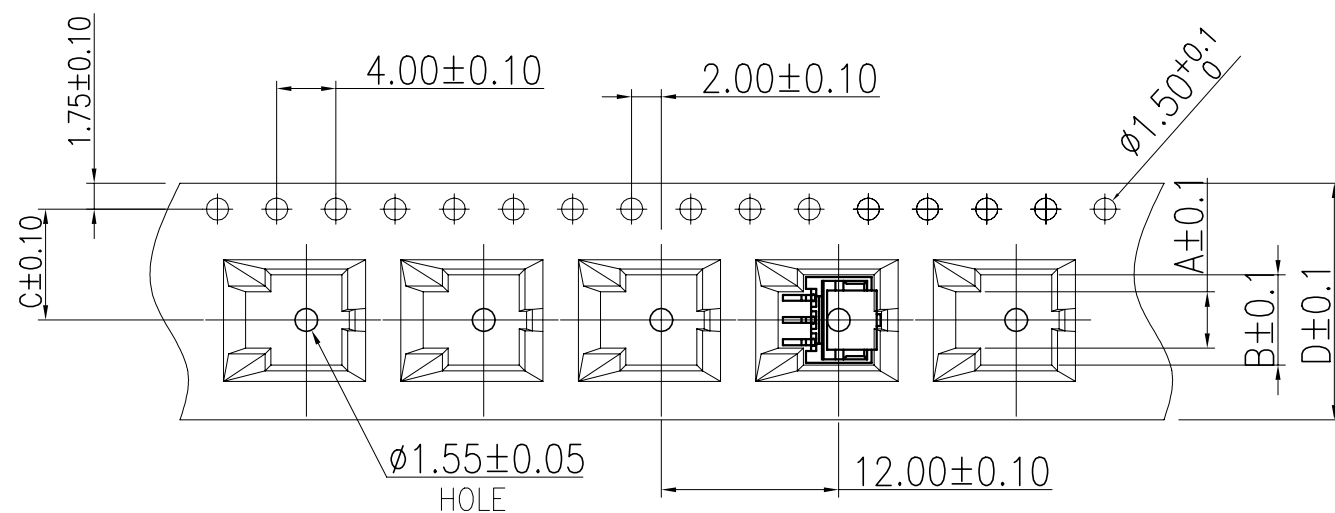
BLACK	4.7	3.4	3.8	4.3	1.5	2	6-2380320-2	4-2380320-2
	6.2	4.9	5.3	5.8	3.0	3	6-2380320-3	4-2380320-3
	7.7	6.4	6.8	7.3	4.5	4	6-2380320-4	4-2380320-4
	9.2	7.9	8.3	8.8	6.0	5	6-2380320-5	4-2380320-5
	10.7	9.4	9.8	10.3	7.5	6	6-2380320-6	4-2380320-6
	12.2	10.9	11.3	11.8	9.0	7	6-2380320-7	4-2380320-7
	13.7	12.4	12.8	13.3	10.5	8	6-2380320-8	4-2380320-8
	15.2	13.9	14.3	14.8	12.0	9	6-2380320-9	4-2380320-9
	16.7	15.4	15.8	16.3	13.5	10	7-2380320-0	5-2380320-0
	18.2	16.9	17.3	17.8	15.0	11	7-2380320-1	5-2380320-1
	19.7	18.4	18.8	19.3	16.5	12	7-2380320-2	5-2380320-2
	21.2	19.9	20.3	20.8	18.0	13	7-2380320-3	5-2380320-3
	22.7	21.4	21.8	22.3	19.5	14	7-2380320-4	5-2380320-4
	24.2	22.9	23.3	23.8	21.0	15	7-2380320-5	5-2380320-5
NATURAL	4.7	3.4	3.8	4.3	1.5	2	2-2380320-2	2380320-2
	6.2	4.9	5.3	5.8	3.0	3	2-2380320-3	2380320-3
	7.7	6.4	6.8	7.3	4.5	4	2-2380320-4	2380320-4
	9.2	7.9	8.3	8.8	6.0	5	2-2380320-5	2380320-5
	10.7	9.4	9.8	10.3	7.5	6	2-2380320-6	2380320-6
	12.2	10.9	11.3	11.8	9.0	7	2-2380320-7	2380320-7
	13.7	12.4	12.8	13.3	10.5	8	2-2380320-8	2380320-8
	15.2	13.9	14.3	14.8	12.0	9	2-2380320-9	2380320-9
	16.7	15.4	15.8	16.3	13.5	10	3-2380320-0	1-2380320-0
	18.2	16.9	17.3	17.8	15.0	11	3-2380320-1	1-2380320-1
	19.7	18.4	18.8	19.3	16.5	12	3-2380320-2	1-2380320-2
	21.2	19.9	20.3	20.8	18.0	13	3-2380320-3	1-2380320-3
	22.7	21.4	21.8	22.3	19.5	14	3-2380320-4	1-2380320-4
	24.2	22.9	23.3	23.8	21.0	15	3-2380320-5	1-2380320-5
COLOR	DIM.E	DIM.D	DIM.C	DIM.B	DIM.A	POS.NO.	TYPE B TYPE A	
							PLATING SPEC.	
							P/N	


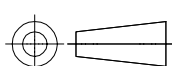
SCALE	N 1 / A	SHEET	1 OF 5	REV	A
-------	---------	-------	--------	-----	---

POS. NO	DIM A	DIM B	DIM C	DIM D
2	2.30	4.60	7.50	16.00
3	3.80	6.10		
4	5.30	7.60		



1. 10 SPROCKET HOLE PITCH CUMULATIVE TOLERANCE: $\pm 0.20\text{mm}$
2. CARRIER CAMBER NOT TO EXCEED 1mm IN 100mm.
3. ALL DIMENSIONS MEET EIA-481-C REQUIREMENTS.
4. MATERIAL: BLACK ANTI-STATIC POLYSTYRENE.
5. THICKNESS: 0.40 ± 0.05 mm.
6. PACKING LENGHT PER 13" REEL : 12.4 METERS.
7. COMPONENT LOAD PER 13" REEL : 950 PCS.
8. PRODUCTS PLACEMENT MUST BE IN THE SAME DIRECTION.



THIS DRAWING IS A CONTROLLED DOCUMENT.		DWN Jone Ji		23SEP2020		<div>TE Connectivity Ltd.</div>									
DIMENSIONS:		TOLERANCES UNLESS OTHERWISE SPECIFIED:		CHK Wenke He		-									
mm				APVD Wenke He		-									
		0 PLC ± 0.5		PRODUCT SPEC		NAME 1.5P WTB VERTICAL TYPE WITH LATCH -									
		1 PLC ± 0.35		-											
		2 PLC ± 0.25													
		3 PLC ± 0.15		APPLICATION SPEC											
		4 PLC ± -		-											
ANGLES ± 2°															
MATERIAL		FINISH		WEIGHT		SIZE		CAGE CODE		DRAWING NO		RESTRICTED TO			
SEE NOTE		-		-		A3		00779		C-2380320		-			
CUSTOMER DRAWING										SCALE		SHEET		REV	
										N/A		2 OF 5		A	

REVISIONS					
P	LTR	DESCRIPTION	DATE	DWN	APVD
	-	SEE SHEET 1	-	-	-

D

C

B

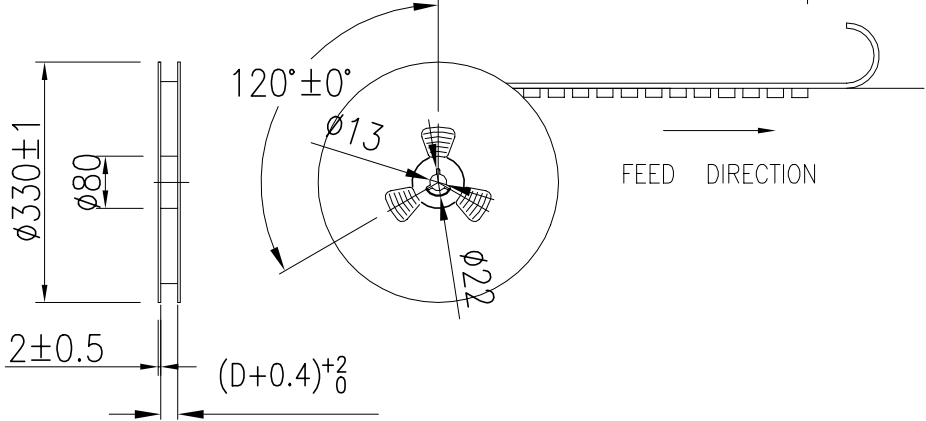
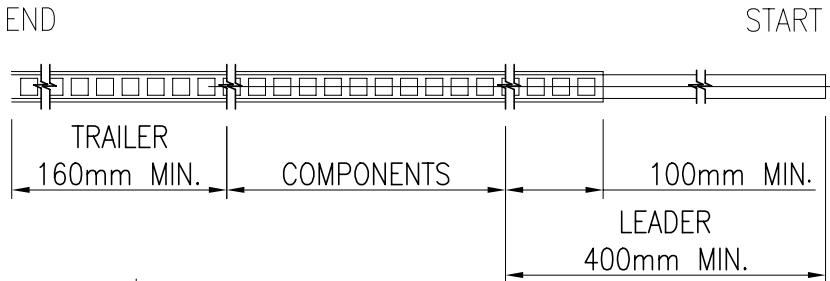
A

D

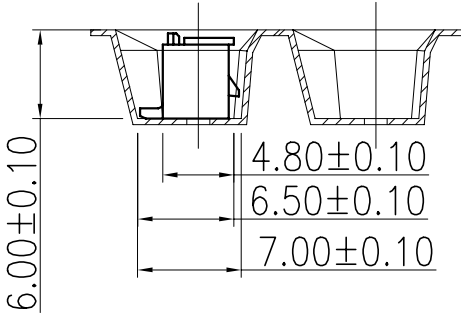
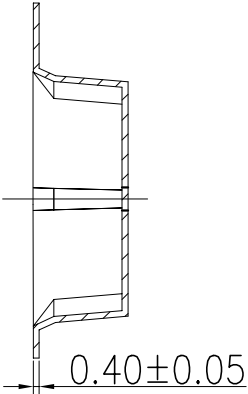
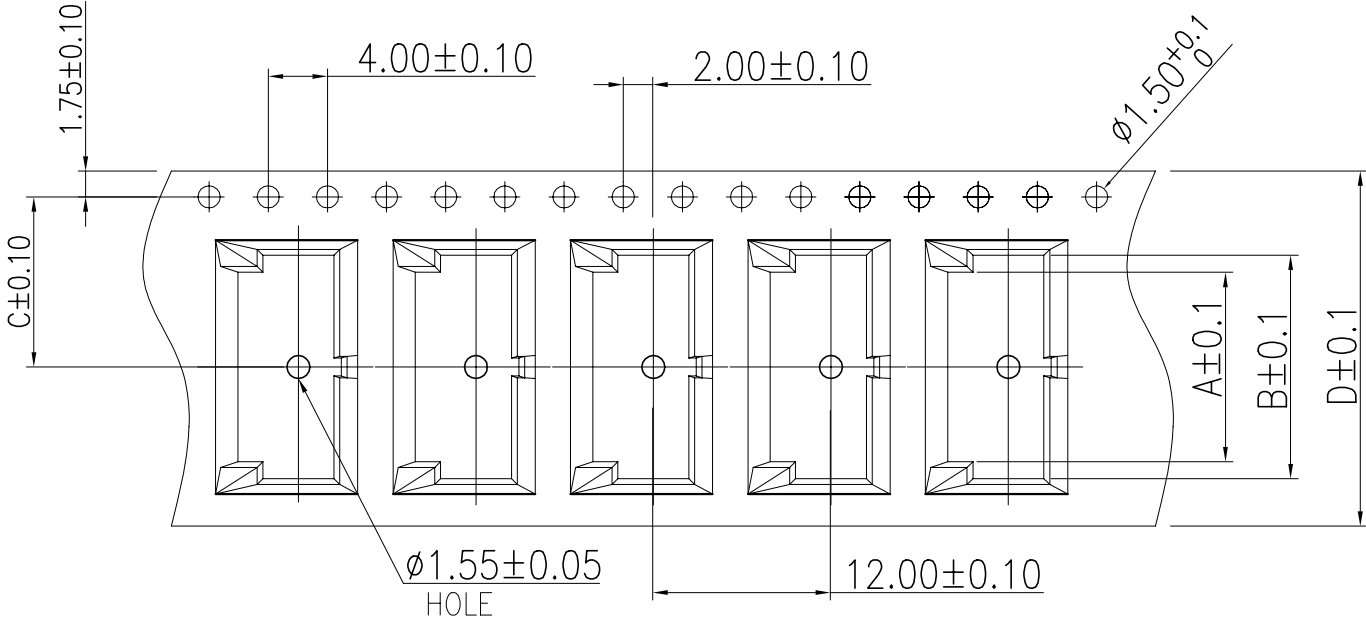
C


B

A



- NOTES:
- 10 SPROCKET HOLE PITCH CUMULATIVE TOLERANCE:±0.20mm
 - CARRIER CAMBER NOT TO EXCEED 1mm IN 100mm.
 - ALL DIMENSIONS MEET EIA-481-C REQUIREMENTS.
 - MATERIAL: BLACK ANTI-STATIC POLYSTYRENE.
 - THICKNESS: 0.40±0.05 mm.
 - PACKING LENGHT PER 13" REEL : 12.4 METERS.
 - COMPONENT LOAD PER 13" REEL : 950 PCS.
 - PRODUCTS PLACEMENT MUST BE IN THE SAME DIRECTION.



THIS DRAWING IS A CONTROLLED DOCUMENT.		DWN Jone Ji 23SEP2020	 TE Connectivity Ltd.		
DIMENSIONS: mm		CHK Wenke He			
TOLERANCES UNLESS OTHERWISE SPECIFIED:		APVD Wenke He	NAME 1.5P WTB VERTICAL TYPE WITH LATCH		
0 PLC ± 0.5 1 PLC ± 0.35 2 PLC ± 0.25 3 PLC ± 0.15 4 PLC ± - ± 2° ANGLES		PRODUCT SPEC —	SIZE A3		
MATERIAL SEE NOTE		FINISH —	CAGE CODE 00779		
		WEIGHT	DRAWING NO C-2380320		
		CUSTOMER DRAWING	RESTRICTED TO —		
		SCALE N/A	SHEET 3 of 5		
			REV A		

P	LTR	DESCRIPTION	DATE	DWN	APVD
	-	SEE SHEET 1	-	-	-

POS. NO	DIM A	DIM B	DIM C	DIM D	DIM S
10	14.3	16.6	14.2	32	28.4
11	15.8	18.1			
12	17.3	19.6			
13	18.8	21.1	20.2	44	40.4
14	20.3	22.6			
15	21.8	24.1			
16	23.3	25.6			
17	24.8	27.1			
18	26.3	28.6			
19	27.8	30.1			
20	29.3	31.6			

- NOTES:
- 10 SPROCKET HOLE PITCH CUMULATIVE TOLERANCE:±0.20mm
 - CARRIER CAMBER NOT TO EXCEED 1mm IN 100mm.
 - ALL DIMENSIONS MEET EIA-481-C REQUIREMENTS.
 - MATERIAL: BLACK ANTI-STATIC POLYSTYRENE.
 - THICKNESS: 0.40±0.05 mm.
 - PACKING LENGHT PER 13" REEL : 12.4 METERS.
 - COMPONENT LOAD PER 13" REEL : 950 PCS.
 - PRODUCTS PLACEMENT MUST BE IN THE SAME DIRECTION.

D

C

B

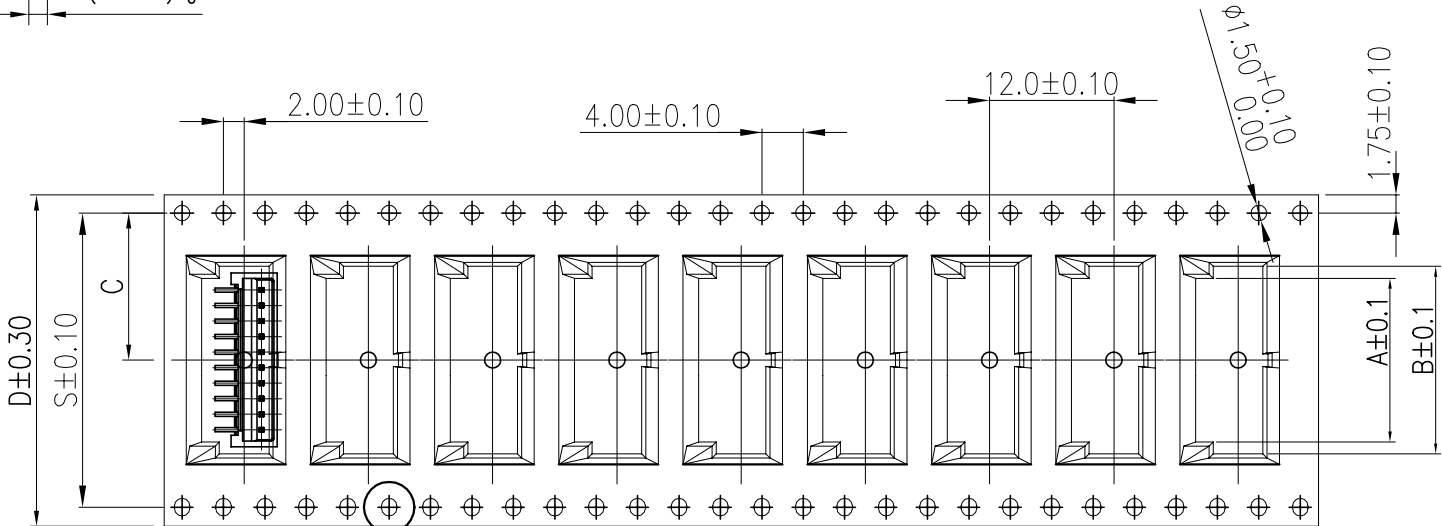
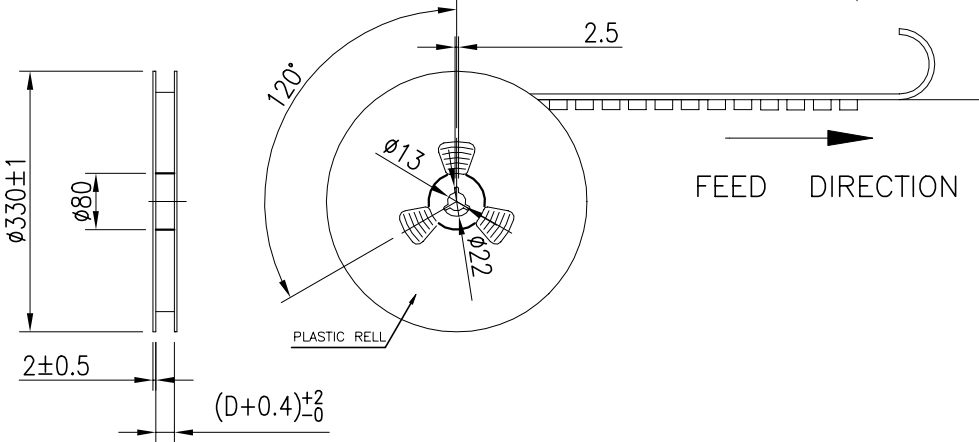
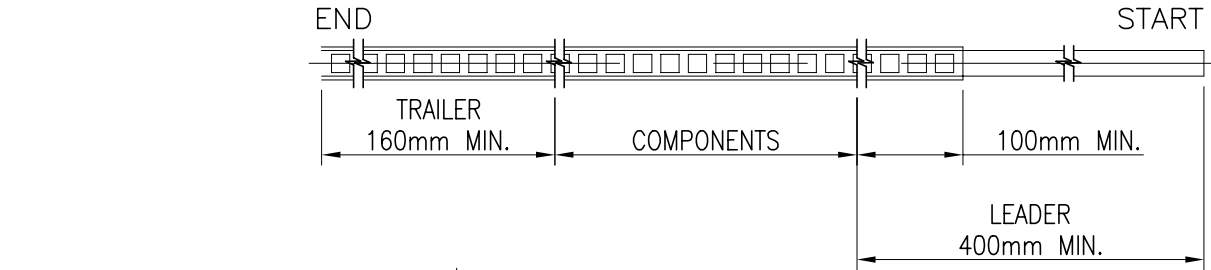
A

D

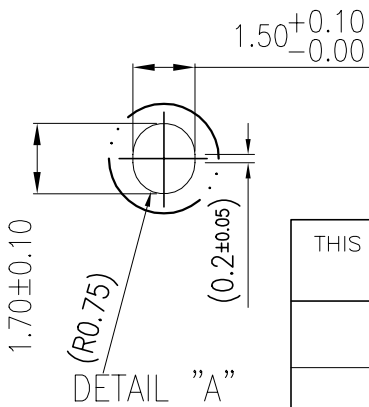
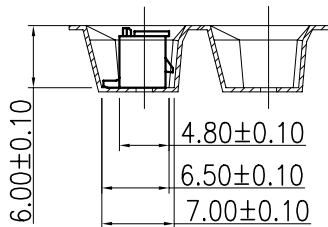
C


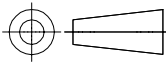
B

A

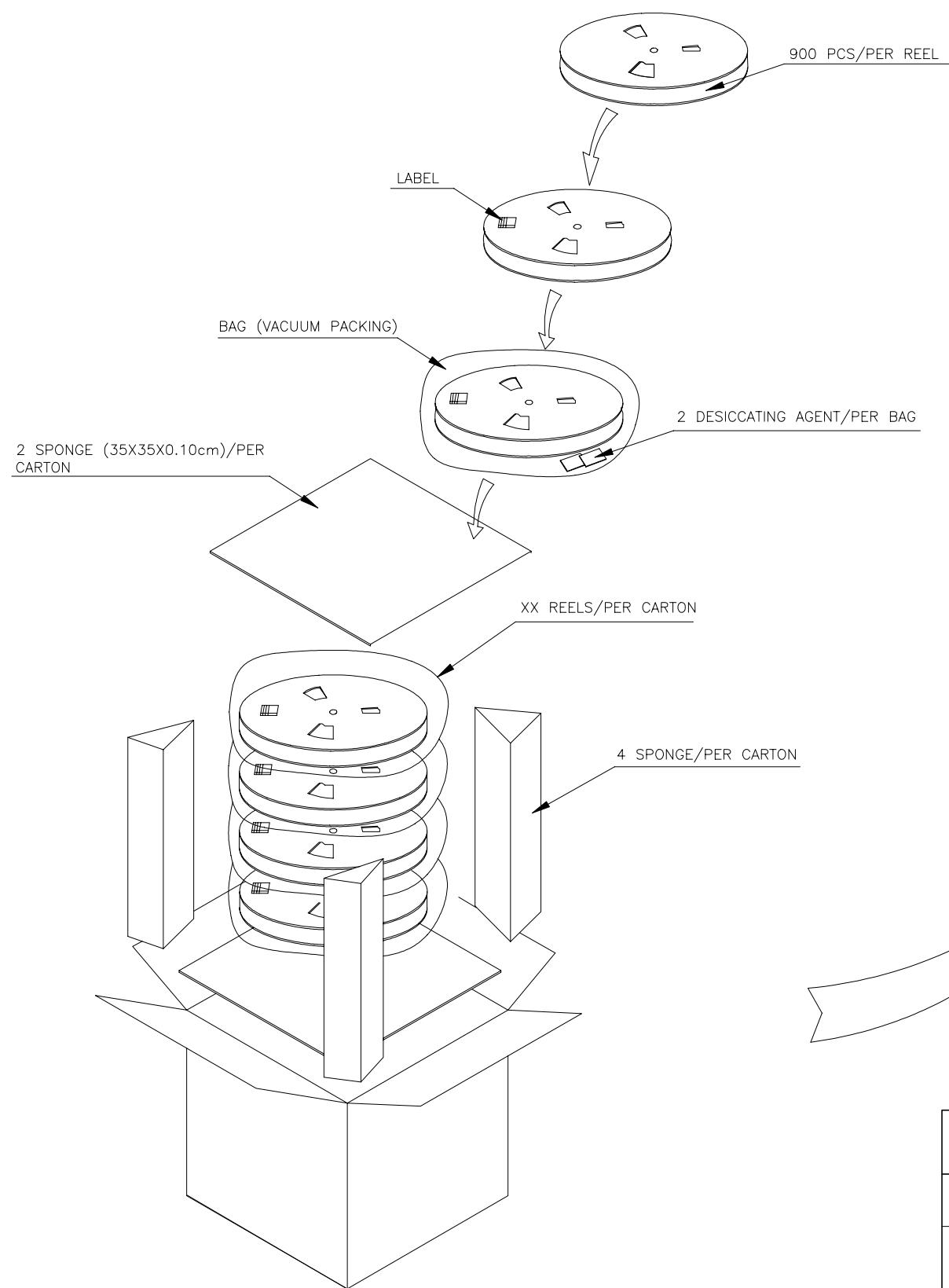


DETAIL "A"

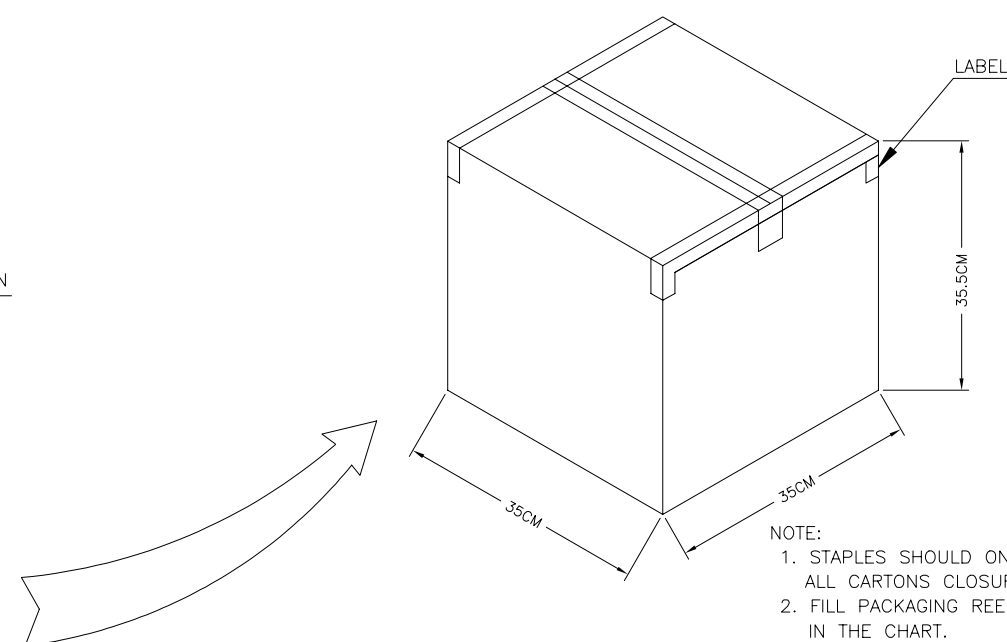


THIS DRAWING IS A CONTROLLED DOCUMENT.		DWN Jone Ji 23SEP2020		 TE Connectivity Ltd.									
DIMENSIONS: mm		TOLERANCES UNLESS OTHERWISE SPECIFIED: 0 PLC ± 0.5 1 PLC ± 0.35 2 PLC ± 0.25 3 PLC ± 0.15 4 PLC ± — ANGLES ± 2°		CHK Wenke He —		NAME 1.5P WTB VERTICAL TYPE WITH LATCH —							
		APVD Wenke He —		SIZE A3				CAGE CODE 00779		DRAWING NO C-2380320		RESTRICTED TO —	
		PRODUCT SPEC											
		APPLICATION SPEC											
MATERIAL SEE NOTE		FINISH —		WEIGHT									
CUSTOMER DRAWING				SCALE N/A		SHEET 4 of 5		REV A					

P	LTR	DESCRIPTION	DATE	DWN	APVD
	—	SEE SHEET 1	—	—	—


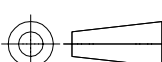


POS.NO.	PARTS PER PRIMARY CARTON	PARTS PER REEL	TOTAL REELS PER PRIMARY CARTON
2	15200(PCS)	950(PCS)	16
3	15200(PCS)	950(PCS)	16
4	15200(PCS)	950(PCS)	16
5	10450(PCS)	950(PCS)	11
6	10450(PCS)	950(PCS)	11
7	10450(PCS)	950(PCS)	11
8	10450(PCS)	950(PCS)	11
9	10450(PCS)	950(PCS)	11
10	8550(PCS)	950(PCS)	9
11	8550(PCS)	950(PCS)	9
12	8550(PCS)	950(PCS)	9
13	6650(PCS)	950(PCS)	7
14	6650(PCS)	950(PCS)	7
15	6650(PCS)	950(PCS)	7



NOTE:

1. STAPLES SHOULD ONLY BE USED TO SET UP CARTON
ALL CARTONS CLOSURES MUST BE DONE WITH TAPE.
2. FILL PACKAGING REEL WITH THE QUANTITIES AS INDICATED
IN THE CHART.

THIS DRAWING IS A CONTROLLED DOCUMENT.		DWN Jones Jj 23SEP2020		 TE Connectivity Ltd.	
DIMENSIONS: mm		CHK Wenke He			
TOLERANCES UNLESS OTHERWISE SPECIFIED:		APVD Wenke He		NAME 1.5P WTB VERTICAL TYPE WITH LATCH	
		PRODUCT SPEC —			
0 PLC ± 0.5 1 PLC ± 0.35 2 PLC ± 0.25 3 PLC ± 0.15 4 PLC ± — ANGLES ± 2°		APPLICATION SPEC —		SIZE A3	
MATERIAL SEE NOTE		WEIGHT —		CAGE CODE 00779	
FINISH —		CUSTOMER DRAWING		DRAWING NO C-2380320	
				RESTRICTED TO —	
				SCALE N/A	
				SHEET 5 OF 5	
				REV A	

Mouser Electronics

Authorized Distributor

Click to View Pricing, Inventory, Delivery & Lifecycle Information:

[TE Connectivity:](#)

[5-2380320-2](#)