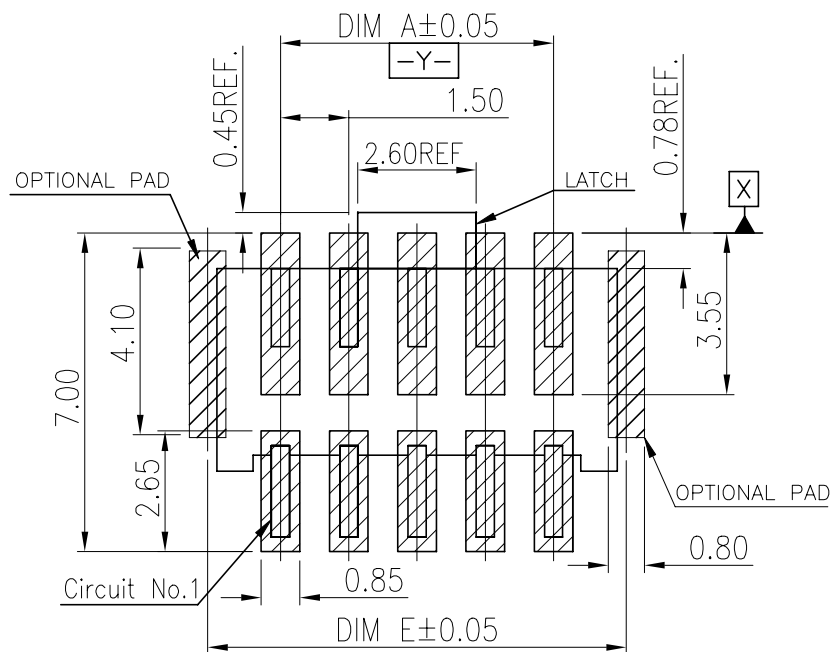
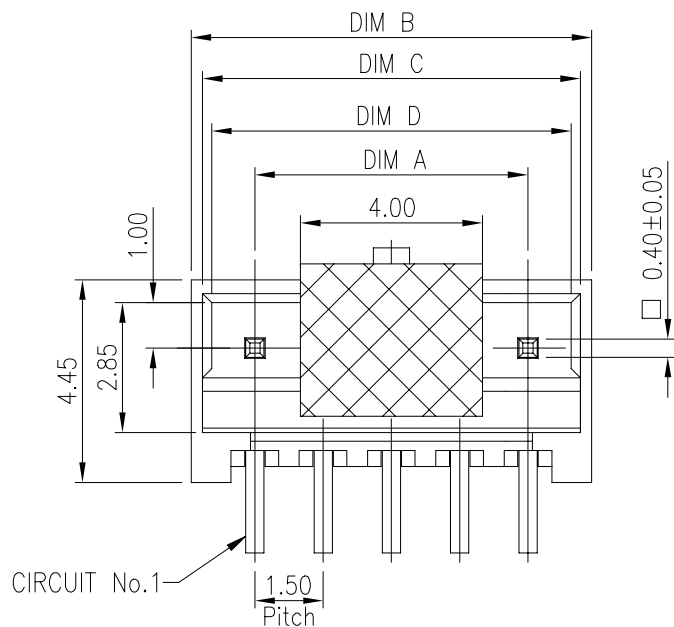
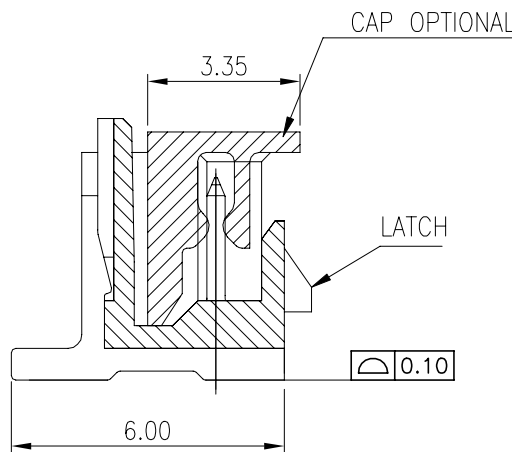
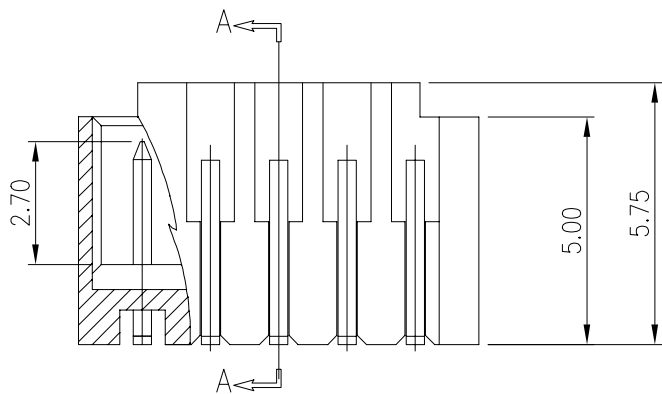


REVISIONS					
P	LTR	DESCRIPTION	DATE	DWN	APVD
	A	ECR-21-108912	08MAY2021	T.Q	N.S



RECOMMENDED PCB LAYOUT FOR *-2380320-*
TOLERANCE ± 0.05

- NOTES:
- MATERIAL:
 - HOUSING: HALOGEN FREE PLASTIC,UL94V-0.
 - CONTACT: COPPER ALLOY
 - FINISH:
 - TYPE A: CONTACT: 50U" MIN. NICKEL UNDER PLATING OVERALL
100U" MIN. MATTE TIN PLATING ON CONTACT AREA AND SOLDER AREA.
 - TYPE B: CONTACT: 50U" MIN. NICKEL UNDER PLATING OVERALL
GOLD FLASH PLATING ON CONTACT AREA AND SOLDER AREA.
 - REFLOW SOLDER CAPABLE TO 260°C, PER PRODUCTION SPEC.



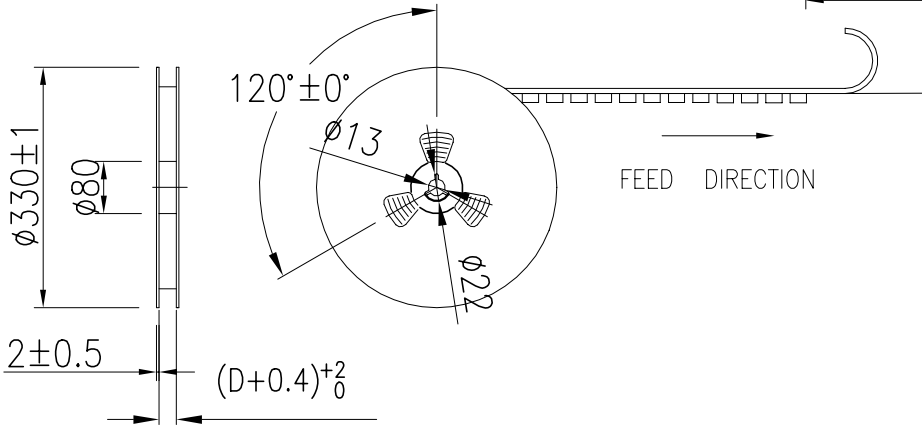
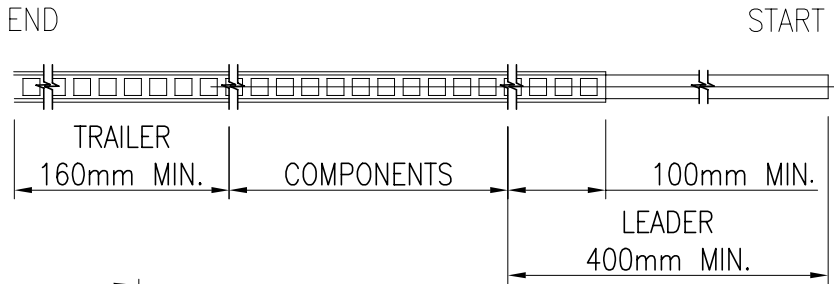
SEC. A-A

BLACK	4.7	3.4	3.8	4.3	1.5	2	6-2380320-2	4-2380320-2
	6.2	4.9	5.3	5.8	3.0	3	6-2380320-3	4-2380320-3
	7.7	6.4	6.8	7.3	4.5	4	6-2380320-4	4-2380320-4
	9.2	7.9	8.3	8.8	6.0	5	6-2380320-5	4-2380320-5
	10.7	9.4	9.8	10.3	7.5	6	6-2380320-6	4-2380320-6
	12.2	10.9	11.3	11.8	9.0	7	6-2380320-7	4-2380320-7
	13.7	12.4	12.8	13.3	10.5	8	6-2380320-8	4-2380320-8
	15.2	13.9	14.3	14.8	12.0	9	6-2380320-9	4-2380320-9
	16.7	15.4	15.8	16.3	13.5	10	7-2380320-0	5-2380320-0
	18.2	16.9	17.3	17.8	15.0	11	7-2380320-1	5-2380320-1
	19.7	18.4	18.8	19.3	16.5	12	7-2380320-2	5-2380320-2
	21.2	19.9	20.3	20.8	18.0	13	7-2380320-3	5-2380320-3
	22.7	21.4	21.8	22.3	19.5	14	7-2380320-4	5-2380320-4
	24.2	22.9	23.3	23.8	21.0	15	7-2380320-5	5-2380320-5
NATURAL	4.7	3.4	3.8	4.3	1.5	2	2-2380320-2	2380320-2
	6.2	4.9	5.3	5.8	3.0	3	2-2380320-3	2380320-3
	7.7	6.4	6.8	7.3	4.5	4	2-2380320-4	2380320-4
	9.2	7.9	8.3	8.8	6.0	5	2-2380320-5	2380320-5
	10.7	9.4	9.8	10.3	7.5	6	2-2380320-6	2380320-6
	12.2	10.9	11.3	11.8	9.0	7	2-2380320-7	2380320-7
	13.7	12.4	12.8	13.3	10.5	8	2-2380320-8	2380320-8
	15.2	13.9	14.3	14.8	12.0	9	2-2380320-9	2380320-9
	16.7	15.4	15.8	16.3	13.5	10	3-2380320-0	1-2380320-0
	18.2	16.9	17.3	17.8	15.0	11	3-2380320-1	1-2380320-1
	19.7	18.4	18.8	19.3	16.5	12	3-2380320-2	1-2380320-2
	21.2	19.9	20.3	20.8	18.0	13	3-2380320-3	1-2380320-3
	22.7	21.4	21.8	22.3	19.5	14	3-2380320-4	1-2380320-4
	24.2	22.9	23.3	23.8	21.0	15	3-2380320-5	1-2380320-5
COLOR	DIM.E	DIM.D	DIM.C	DIM,B	DIM.A	POS.NO.	TYPE B	
							TYPE A	
							PLATING SPEC.	
P/N								

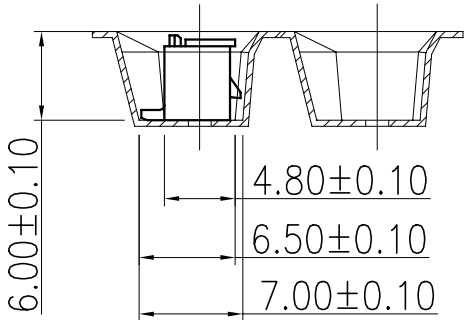
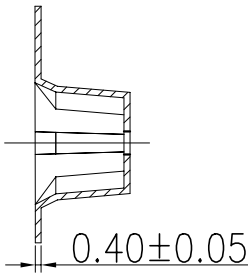
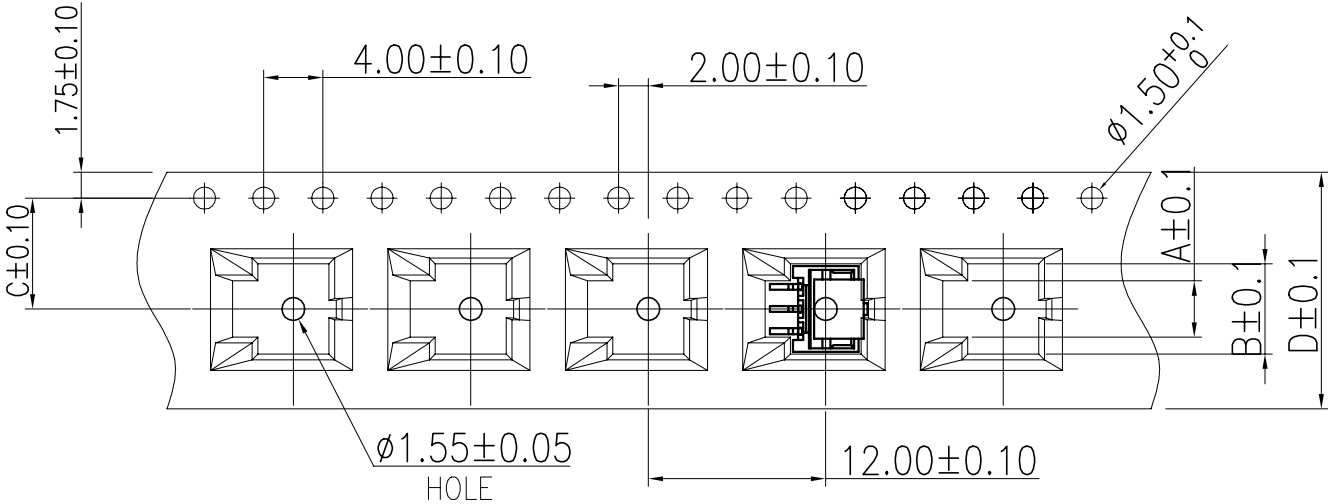
THIS DRAWING IS A CONTROLLED DOCUMENT.		DWN	23SEP2020	TE Connectivity Ltd.				
		CHK	Jone Ji					
		APVD	Wenke He	NAME				
		PRODUCT SPEC	Wenke He					
		APPLICATION SPEC	—	1.5P WTB VERTICAL TYPE WITH LATCH				
		—	—					
		WEIGHT	—	SIZE	CAGE CODE	DRAWING NO	RESTRICTED TO	
		—	—	A3	00779	C=2380320	—	
		CUSTOMER DRAWING	—	SCALE	N/A	SHEET	1 of 5	REV
		—	—	—	—	—	—	A

REVISIONS					
P	LTR	DESCRIPTION	DATE	DWN	APVD
	-	SEE SHEET 1	-	-	-

POS. NO	DIM A	DIM B	DIM C	DIM D
2	2.30	4.60	7.50	16.00
3	3.80	6.10		
4	5.30	7.60		



- NOTES:
1. 10 SPROCKET HOLE PITCH CUMULATIVE TOLERANCE: $\pm 0.20\text{mm}$
 2. CARRIER CAMBER NOT TO EXCEED 1mm IN 100mm.
 3. ALL DIMENSIONS MEET EIA-481-C REQUIREMENTS.
 4. MATERIAL: BLACK ANTI-STATIC POLYSTYRENE.
 5. THICKNESS: $0.40 \pm 0.05\text{ mm}$.
 6. PACKING LENGHT PER 13" REEL : 12.4 METERS.
 7. COMPONENT LOAD PER 13" REEL : 950 PCS.
 8. PRODUCTS PLACEMENT MUST BE IN THE SAME DIRECTION.



THIS DRAWING IS A CONTROLLED DOCUMENT.		DWN Jone Ji 23SEP2020	TE Connectivity Ltd.		
DIMENSIONS: mm		CHK Wenke He			
		APVD Wenke He	NAME 1.5P WTB VERTICAL TYPE WITH LATCH		
		PRODUCT SPEC			
		APPLICATION SPEC	SIZE A3		
		WEIGHT			
MATERIAL SEE NOTE		FINISH -	CAGE CODE 00779	DRAWING NO C-2380320	RESTRICTED TO -
CUSTOMER DRAWING			SCALE N/A	SHEET 2 of 5	REV A

REVISIONS					
P	LTR	DESCRIPTION	DATE	DWN	APVD
	-	SEE SHEET 1	-	-	-

D

D

C

C

B

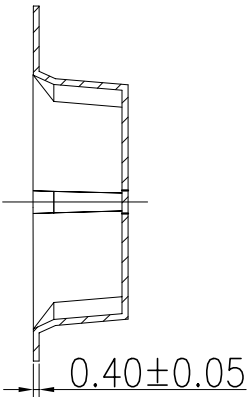
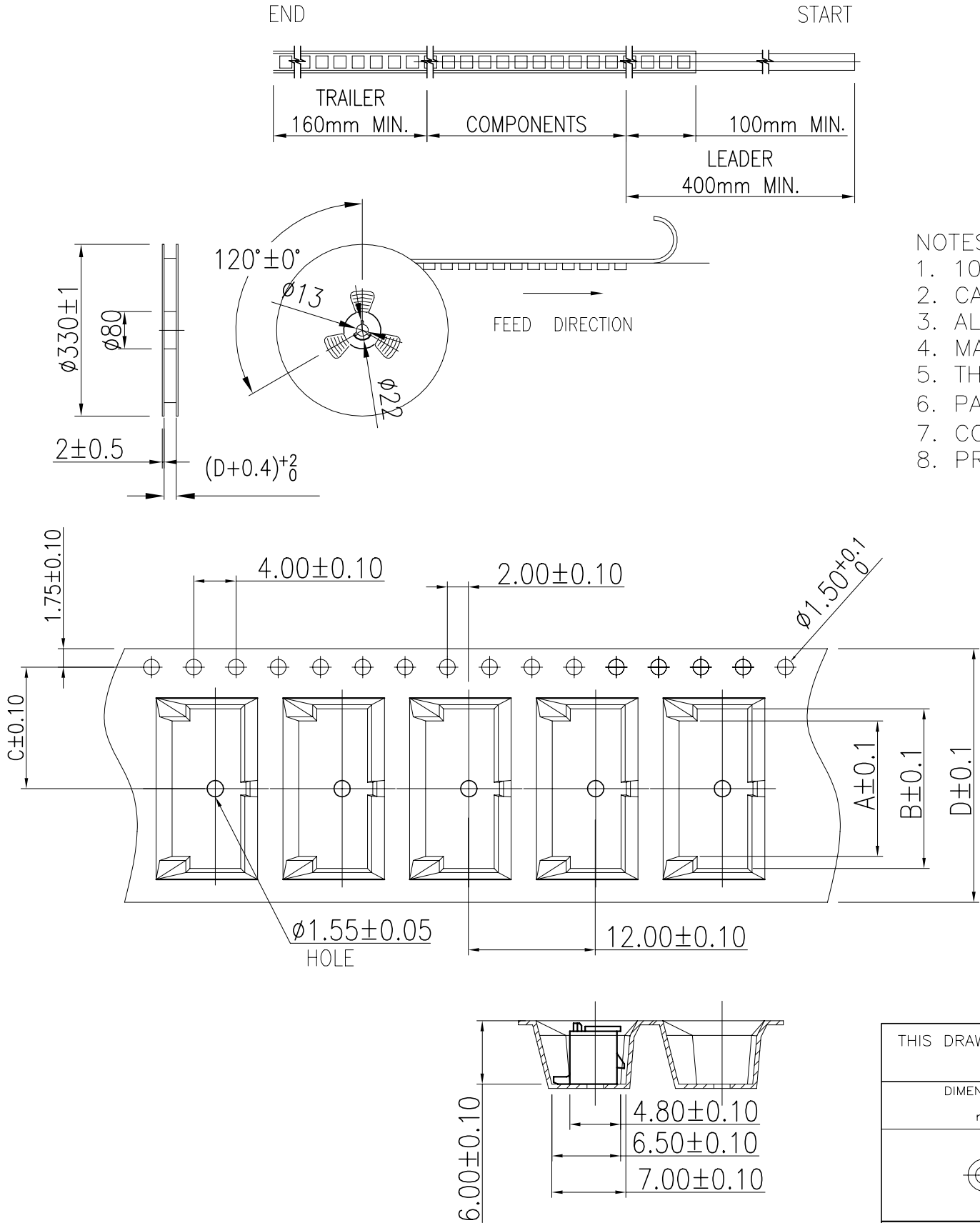
B


A

A

POS. NO	DIM A	DIM B	DIM C	DIM D
5	6. 80	9. 10	11. 5	24
6	8. 30	10. 60		
7	9. 80	12. 10		
8	11. 30	13. 60		
9	12. 80	15. 10		

- NOTES:
- 10 SPROCKET HOLE PITCH CUMULATIVE TOLERANCE:±0.20mm
 - CARRIER CAMBER NOT TO EXCEED 1mm IN 100mm.
 - ALL DIMENSIONS MEET EIA-481-C REQUIREMENTS.
 - MATERIAL: BLACK ANTI-STATIC POLYSTYRENE.
 - THICKNESS: 0.40±0.05 mm.
 - PACKING LENGHT PER 13” REEL : 12.4 METERS.
 - COMPONENT LOAD PER 13” REEL : 950 PCS.
 - PRODUCTS PLACEMENT MUST BE IN THE SAME DIRECTION.



THIS DRAWING IS A CONTROLLED DOCUMENT.		DWN Jone Ji 23SEP2020	 TE Connectivity Ltd.		
DIMENSIONS: mm		CHK Wenke He			
TOLERANCES UNLESS OTHERWISE SPECIFIED:		APVD Wenke He	NAME 1.5P WTB VERTICAL TYPE WITH LATCH		
0 PLC ± 0.5 1 PLC ± 0.35 2 PLC ± 0.25 3 PLC ± 0.15 4 PLC ± 0.15 ANGLES ± 2°		PRODUCT SPEC —	SIZE A3		
MATERIAL SEE NOTE		FINISH —	CAGE CODE 00779		
		WEIGHT —	DRAWING NO C-2380320		
		CUSTOMER DRAWING	RESTRICTED TO —		
		SCALE N/A	SHEET 3 of 5		
			REV A		

P	LTR	DESCRIPTION	DATE	DWN	APVD
	-	SEE SHEET 1	-	-	-

POS. NO	DIM A	DIM B	DIM C	DIM D	DIM S
10	14.3	16.6	14.2	32	28.4
11	15.8	18.1			
12	17.3	19.6			
13	18.8	21.1	20.2	44	40.4
14	20.3	22.6			
15	21.8	24.1			
16	23.3	25.6			
17	24.8	27.1			
18	26.3	28.6			
19	27.8	30.1			
20	29.3	31.6			

- NOTES:
- 10 SPROCKET HOLE PITCH CUMULATIVE TOLERANCE:±0.20mm
 - CARRIER CAMBER NOT TO EXCEED 1mm IN 100mm.
 - ALL DIMENSIONS MEET EIA-481-C REQUIREMENTS.
 - MATERIAL: BLACK ANTI-STATIC POLYSTYRENE.
 - THICKNESS: 0.40±0.05 mm.
 - PACKING LENGHT PER 13" REEL : 12.4 METERS.
 - COMPONENT LOAD PER 13" REEL : 950 PCS.
 - PRODUCTS PLACEMENT MUST BE IN THE SAME DIRECTION.

D

C

B

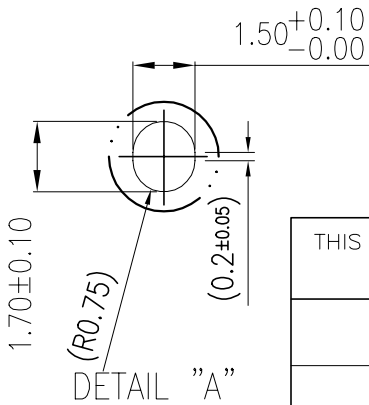
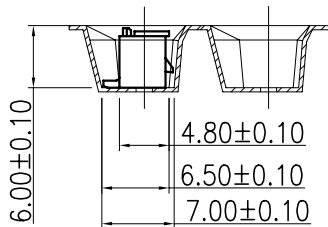
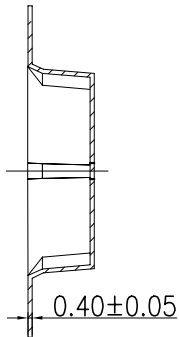
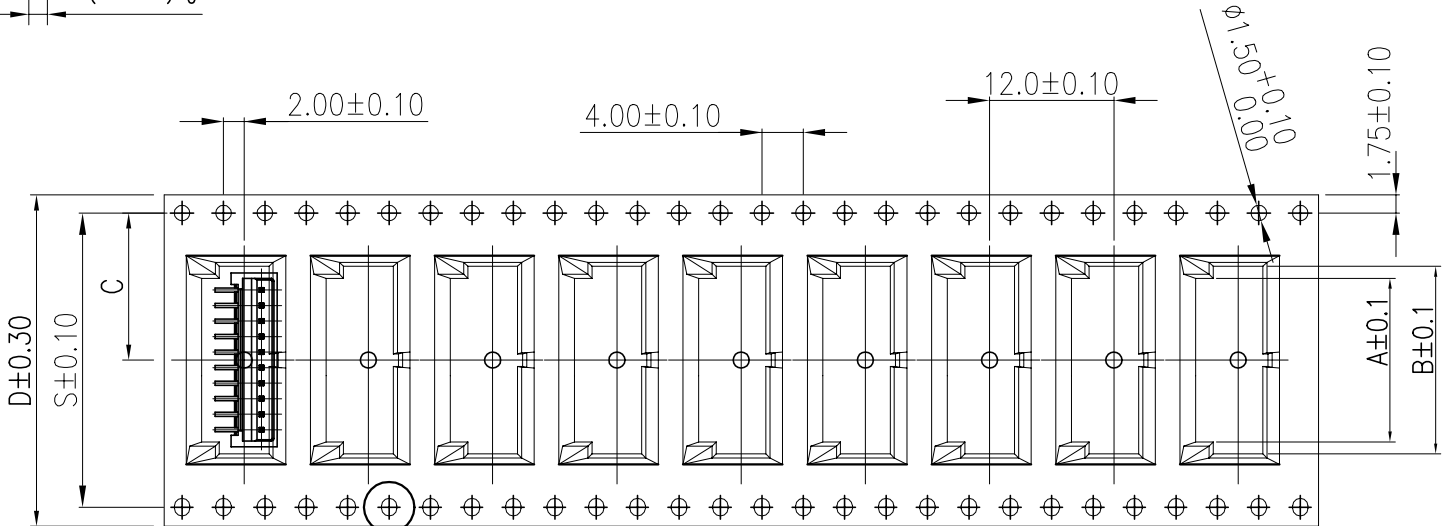
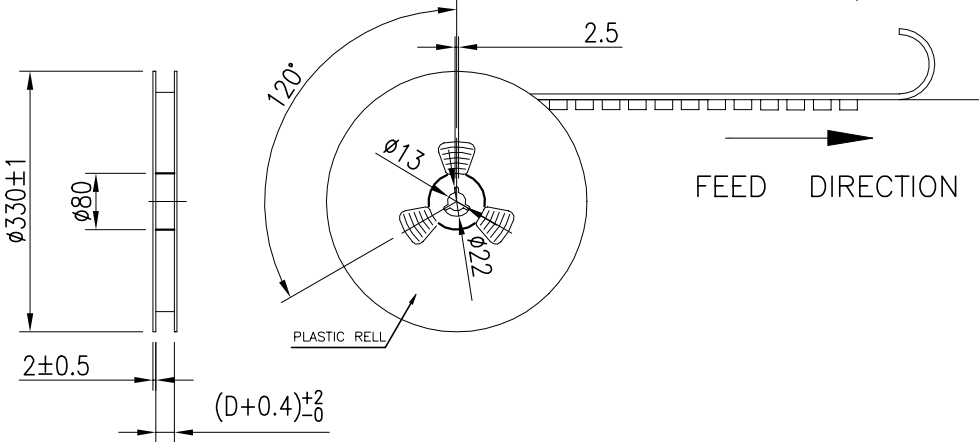
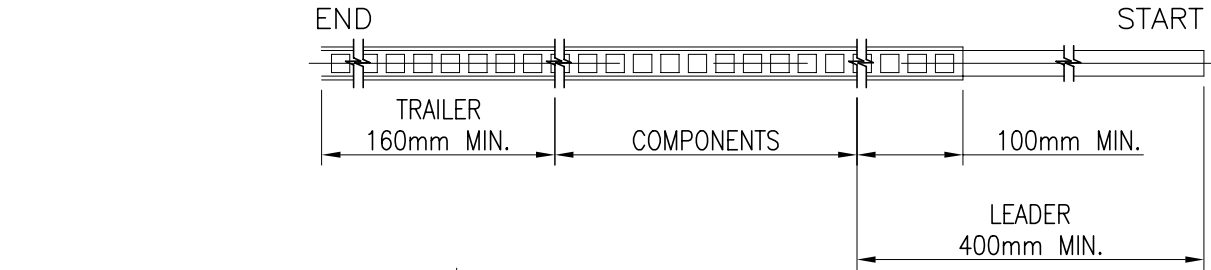
A


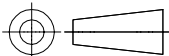
D

C

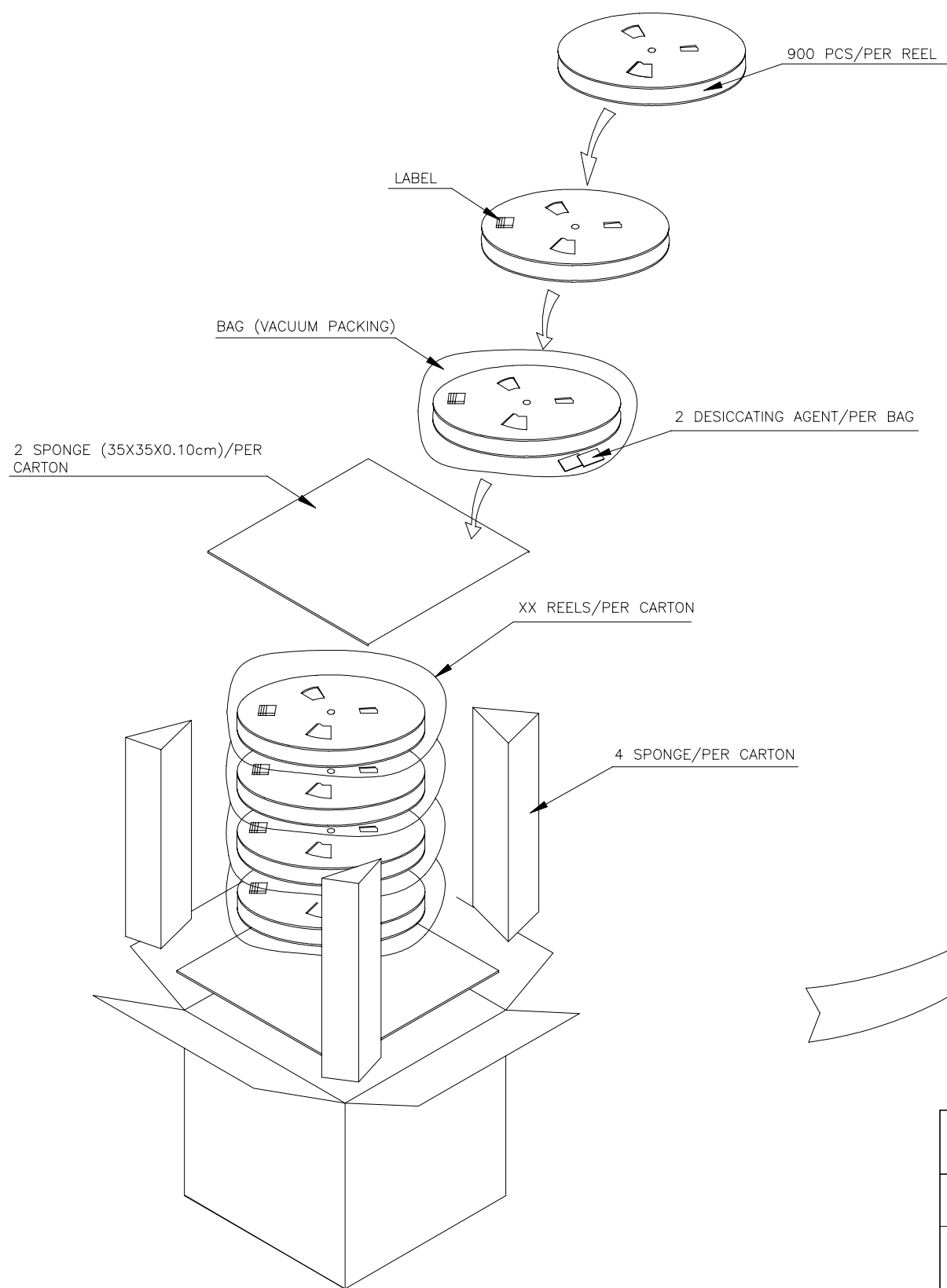
B

A

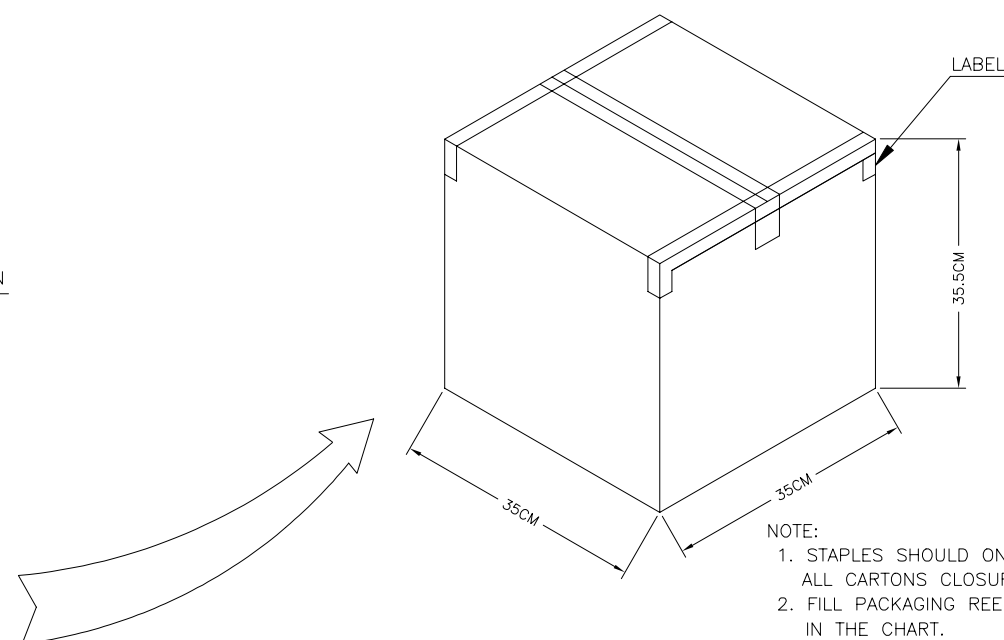


THIS DRAWING IS A CONTROLLED DOCUMENT.		DWN Jone Ji	23SEP2020		<div>TE Connectivity Ltd.</div>					
		CHK Wenke He	—							
DIMENSIONS: mm	<div>TOLERANCES UNLESS OTHERWISE SPECIFIED:</div> <div><div>0 PLC± 0.5</div><div>1 PLC± 0.35</div><div>2 PLC± 0.25</div><div>3 PLC± 0.15</div><div>4 PLC± —</div><div>ANGLES± 2°</div></div>	APVD Wenke He	—		NAME 1.5P WTB VERTICAL TYPE WITH LATCH —					
		PRODUCT SPEC —	—							
		APPLICATION SPEC —	—							
		SIZE	CAGE CODE	DRAWING NO			RESTRICTED TO			
		MATERIAL SEE NOTE		FINISH —			WEIGHT	A3	00779	C=2380320
		CUSTOMER DRAWING			SCALE	N/A	SHEET	4 of 5	REV	A

P	LTR	DESCRIPTION	DATE	DWN	APVD
	—	SEE SHEET 1	—	—	—


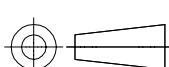


POS.NO.	PARTS PER PRIMARY CARTON	PARTS PER REEL	TOTAL REELS PER PRIMARY CARTON
2	15200(PCS)	950(PCS)	16
3	15200(PCS)	950(PCS)	16
4	15200(PCS)	950(PCS)	16
5	10450(PCS)	950(PCS)	11
6	10450(PCS)	950(PCS)	11
7	10450(PCS)	950(PCS)	11
8	10450(PCS)	950(PCS)	11
9	10450(PCS)	950(PCS)	11
10	8550(PCS)	950(PCS)	9
11	8550(PCS)	950(PCS)	9
12	8550(PCS)	950(PCS)	9
13	6650(PCS)	950(PCS)	7
14	6650(PCS)	950(PCS)	7
15	6650(PCS)	950(PCS)	7



NOTE:

1. STAPLES SHOULD ONLY BE USED TO SET UP CARTON
ALL CARTONS CLOSURES MUST BE DONE WITH TAPE.
2. FILL PACKAGING REEL WITH THE QUANTITIES AS INDICATED
IN THE CHART.

THIS DRAWING IS A CONTROLLED DOCUMENT.		DWN Jones Jj		23SEP2020		 TE Connectivity Ltd.	
DIMENSIONS: mm		CHK Wenke He		—			
TOLERANCES UNLESS OTHERWISE SPECIFIED:		APVD Wenke He		—		NAME	
		PRODUCT SPEC		—		1.5P WTb VERTICAL TYPE WITH LATCH	
0 PLC ± 0.5 1 PLC ± 0.35 2 PLC ± 0.25 3 PLC ± 0.15 4 PLC ± — ANGLES ± 2°		APPLICATION SPEC		—		—	
MATERIAL		FINISH		—		RESTRICTED TO	
SEE NOTE		—		—		—	
CUSTOMER DRAWING						SCALE N/A	
SHEET 5 of 5						REV A	

Mouser Electronics

Authorized Distributor

Click to View Pricing, Inventory, Delivery & Lifecycle Information:

[TE Connectivity:](#)

[5-2380320-4](#)