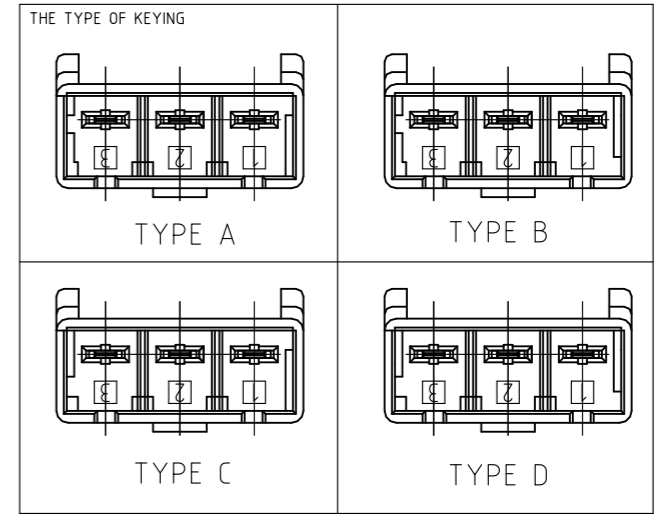
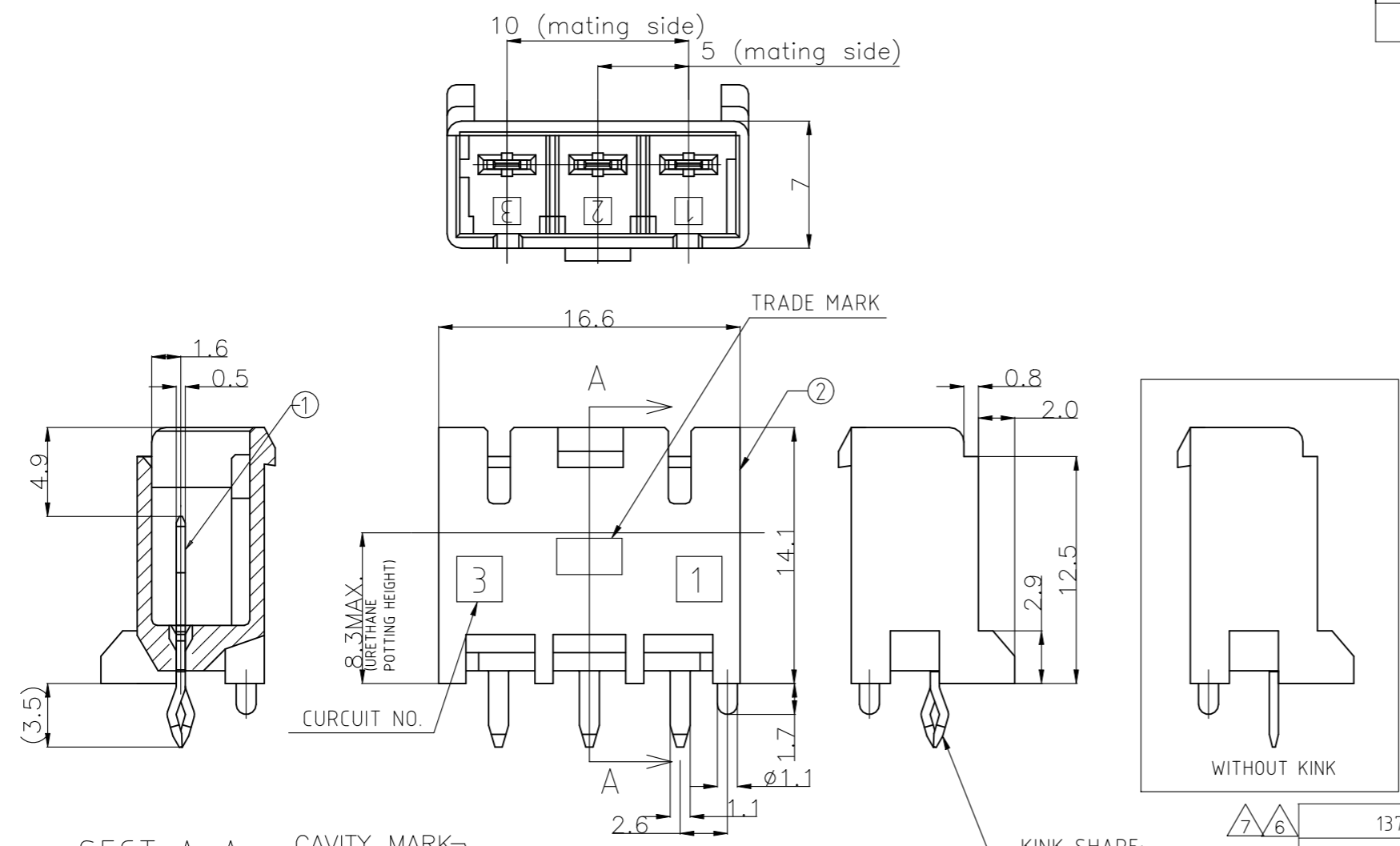


THIS DRAWING IS UNPUBLISHED. RELEASED FOR PUBLICATION
 © COPYRIGHT - Tyco Electronics JAPAN G.K. ALL RIGHTS RESERVED.

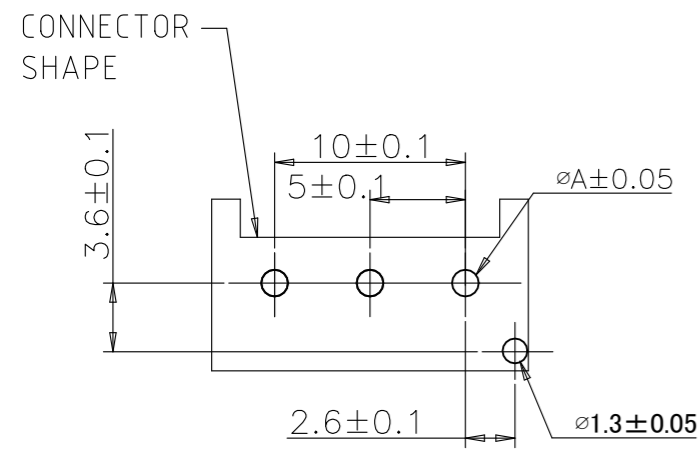
| P | LTR | DESCRIPTION | DATE | DWN | APVD |
|---|-----|---------------------------|-----------|-----|------|
| | H2 | REVISED PER ECR-21-101026 | 23MAR2021 | SK | DZ |



| NO. | NAME | MATERIAL |
|-----|----------------|------------------------------------|
| ② | HEADER HOISING | 6/6 NYLON GRASS FILLED/ NYLON 6 |
| ① | TAB | COPPER ALLOY TIN PLATED |

SECT A-A

CAVITY MARK



- ① RECOMMENDED P.C.B LAY OUT
- ② APPLICABLE P.C.B. THICKNESS:1.6
- ③ MATING CONN. P/N PLUG HOUSING :SEE TABLE
- ④ PARTS COMPLY WITH GLOW WIRE REQUIREMENT FOR PARTS OF NON-METALLIC MATERIAL SUPPORTING A CURRENT-CARRYING CONNECTION DETAILED IN IEC 60335-1, SECTION 30 (GWT).
- ⑤ NYLON 6, GWT, V-2.
- ⑥ NYLON 66, GWT, V-0. PRELIMINARY-HIGH CURRENT RATING VERSION.
- ⑦

| | |
|----------|-------|
| PUNCHING | 1.25 |
| DRILLING | 1.4 |
| | DIM A |

① RECOMMENDED PCB HOLES

THIS DRAWING IS A CONTROLLED DOCUMENT.

| DIMENSIONS: | TOLERANCES UNLESS OTHERWISE SPECIFIED: |
|--------------|--|
| mm | |
| 0 PLC | ± 0.2 |
| 1 PLC | ± |
| 2 PLC | ± |
| 3/PLC | ± |
| 4 PLC ANGLES | ± |
| MATERIAL | FINISH |
| SEE TABLE | - |

| 7/6 | 1376389-1 | WITH KINK | TYPE A | NATURAL | 3Pos | 1376383-6 |
|-----|------------------|-------------------|----------------|---------|------|-------------|
| 5 | 1376389-5 | WITH KINK | TYPE A | NATURAL | 3Pos | 1376383-5 |
| 6 | 3-1376389-4 | WITHOUT KINK | TYPE D | YELLOW | 3Pos | 8-1376383-4 |
| 6 | 2-1376389-3 | WITHOUT KINK | TYPE C | BLUE | 3Pos | 7-1376383-3 |
| 6 | 1-1376389-2 | WITHOUT KINK | TYPE B | RED | 3Pos | 6-1376383-2 |
| 6 | 1376389-1 | WITHOUT KINK | TYPE A | NATURAL | 3Pos | 5-1376383-1 |
| 6 | 3-1376389-4 | WITH KINK | TYPE D | YELLOW | 3Pos | 3-1376383-4 |
| 6 | 2-1376389-3 | WITH KINK | TYPE C | BLUE | 3Pos | 2-1376383-3 |
| 6 | 1-1376389-2 | WITH KINK | TYPE B | RED | 3Pos | 1-1376383-2 |
| 6 | 1376389-1 | WITH KINK | TYPE A | NATURAL | 3Pos | 1376383-1 |
| | MATING CONN. P/N | WITH/WITHOUT KINK | TYPE OF KEYING | Color | Pos | PART NO. |

DWN A.OISHI 28AUG'00
 CHK Y.KASHIWA 28AUG'00
 APVD Y.KASHIWA 28AUG'00

STE TE Connectivity

NAME
 5.0 POWER KEY CONNECTOR
 3P HEADER ASSEMBLY

PRODUCT SPEC
 108-5699

APPLICATION SPEC
 114-5292

WEIGHT -

SIZE A3 CAGE CODE 00779 DRAWING NO. C-1376383 RESTRICTED TO -

CUSTOMER DRAWING SCALE 3:1 SHEET 1 OF 1 REV H2

Mouser Electronics

Authorized Distributor

Click to View Pricing, Inventory, Delivery & Lifecycle Information:

[TE Connectivity:](#)

[6-1376383-2](#)