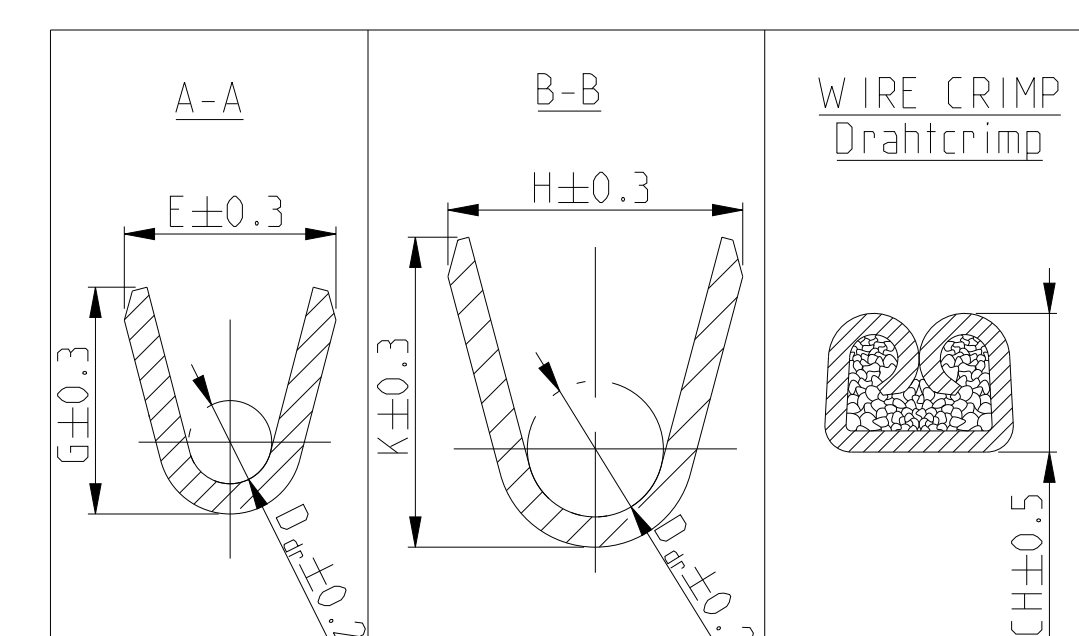


REV	TE Connectivity ORDER - NO	TE Connectivity ORDER - NO	TE Connectivity ORDER - NO	TE Connectivity ORDER - NO	TE Connectivity ORDER - NO	MATERIAL	SURFACE
-	-	-	-	-	-	1862029-5 A	CuFe2 PRESILVERED vorversilbert
-	-	-	-	-	-	-	-
-	-	-	-	-	-	-	-
-	-	-	-	-	-	-	-
-	-	-	-	-	-	-	-
-	927839-2 C	-	-	-	-	CuSn4	PRETINNED vorverzinkt
-	927839-1 C	-	-	-	-	CuFe2	-
-	-	927827-2 C	-	-	-	CuSn4	PRETINNED vorverzinkt
-	-	927827-1 C	-	-	-	CuFe2	-
-	-	927833-5 D	-	-	-	CuFe2	vorversilbert vorverzinkt
-	-	927833-2 D	-	-	-	CuSn4	PRETINNED vorverzinkt
-	-	927833-1 D	-	-	-	CuFe2	-
927824-2 C	-	-	-	-	-	CuSn4	PRETINNED vorverzinkt
927824-1 C	-	-	-	-	-	CuFe2	-
963709-5 C	-	-	-	-	-	CuFe2	vorversilbert PRESILVERED
-	-	-	-	-	-	-	-
963709-2 C	-	-	-	-	-	CuSn4	vorverzinkt PRETINNED
963709-1 C	-	-	-	-	-	CuFe2	-
1241818-5 B	-	-	-	-	-	CuFe2	vorverzinkt PRETINNED
1241818-1 B	-	-	-	-	-	CuFe2	vorversilbert PRESILVERED
-	927840-5 C	-	-	-	-	CuFe2	vorversilbert PRESILVERED
-	927840-4 C	-	-	-	-	CuSn4	vorversilbert PRESILVERED
-	-	-	-	-	-	-	-
-	927840-2 C	-	-	-	-	CuSn4	vorverzinkt PRETINNED
-	927840-1 C	-	-	-	-	CuFe2	-
-	-	927834-5 C	-	-	-	CuFe2	vorversilbert PRESILVERED
-	-	927831-5 C	-	-	-	CuFe2	vorversilbert PRESILVERED
-	-	927831-4 C	-	-	-	CuSn4	vorversilbert PRESILVERED
-	-	927831-2 C	-	-	-	CuSn4	vorverzinkt PRETINNED
-	-	927831-1 C	-	-	-	CuFe2	-
-	-	927837-5 D	-	-	-	CuFe2	vorversilbert PRESILVERED
-	-	927837-6 D	-	-	-	CuFe2	vorversilbert PRESILVERED
-	-	927837-5 D	-	-	-	CuFe2	vorversilbert PRESILVERED
-	-	927837-4 D	-	-	-	CuSn4	vorversilbert PRESILVERED
-	-	-	-	-	-	-	-
-	-	927837-2 D	-	-	-	CuSn4	vorverzinkt PRETINNED
-	-	927837-1 D	-	-	-	CuFe2	-
927829-5 D	-	-	-	-	-	CuFe2	vorversilbert PRESILVERED
927829-5 D	-	-	-	-	-	CuFe2	vorversilbert PRESILVERED
927829-2 D	-	-	-	-	-	CuSn4	vorverzinkt PRETINNED
927829-1 D	-	-	-	-	-	CuFe2	-

VERSION A

CRIMP DIMENSIONS (mm)	EXTRACTION TOOL	HAND TOOL	SINGLE WIRE SEAL	DEAD END PLUG	TE CONNECTIVITY ORDER - No.
0.35 - 0.5 FLR E = 2.37 G = 2.45 D _w = 0.8	MQC- Applicator 2837770-2	-	-	-	963243-1 963244-1
0.35 - 0.5 FLU E = 2.2 G = 2.2 D _w = 0.8	MQC- Applicator 878426-2	539635-1 WITH DIE: mit Matrize 539744-2	-	-	963244-1 963245-1
0.2 - 0.5 FLK E = 2.8 G = 3.0 D _w = 1.1	MQC- Applicator 2-541689-2	539733-2 WITH DIE: mit Matrize 736249-0	-	-	967011-1 963245-1
0.5 - 1.0 FLK E = 3.8 G = 4.1 D _w = 1.6	MQC- Applicator 878367-2	539635-1 WITH DIE: mit Matrize 539733-2	-	-	-
>1.0 - 2.5 FLK E = 4.6 G = 4.8 D _w = 2.4	MQC- Applicator 2-878314-2	539635-1 WITH DIE: mit Matrize 539734-2	-	-	-
>2.5 - 4.0 FLK E = 5.2 G = 5.5 D _w = 2.9	MQC- Applicator 2-878738-2	-	-	-	-
4.0 - 6.0 FLK E = 2.2 G = 2.2 D _w = 0.8	MQC- Applicator 878427-2	-	-	-	-
0.2 - 0.5 FLR E = 2.8 G = 3.0 D _w = 1.1	MQC- Applicator 878328-2	169400-0 WITH DIE: mit Matrize 734781-1	-	-	-
0.5 - 1.0 FLR E = 3.8 G = 4.1 D _w = 1.6	MQC- Applicator 878356-2	169400-0 WITH DIE: mit Matrize 734251-0	-	-	-
>1.0 - 2.5 FLR E = 4.6 G = 4.8 D _w = 2.4	MQC- Applicator 2-878384-2	169400-0 WITH DIE: mit Matrize 734251-0	-	-	-
>2.5 - 4.0 FLR E = 4.6 G = 4.8 D _w = 2.4	MQC- Applicator 2-878384-2	169400-0 WITH DIE: mit Matrize 734251-0	-	-	-

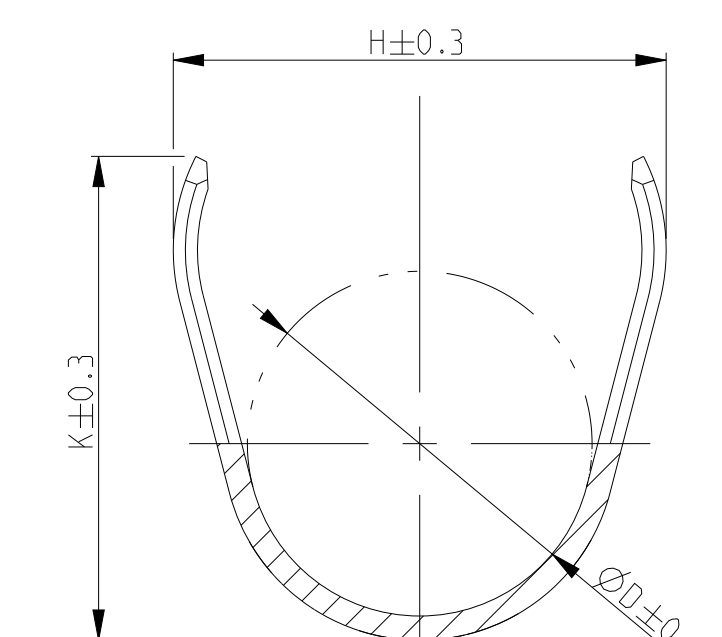


REV	TE Connectivity ORDER - NO	TE Connectivity ORDER - NO	TE Connectivity ORDER - NO	TE Connectivity ORDER - NO	TE Connectivity ORDER - NO	MATERIAL	SURFACE
-	-	-	-	-	-	2-927836-2 C	CuSn4
-	-	-	-	-	-	927836-2 C	CuSn4
-	-	-	-	-	-	927836-1 C	CuFe2
-	-	-	-	-	-	2-927835-2 C	CuSn4
-	-	-	-	-	-	2-927835-1 C	CuSn4
-	-	-	-	-	-	1-927835-3 C	CuFe2
-	-	-	-	-	-	-	-
-	-	-	-	-	-	927835-2 C	CuSn4
-	-	-	-	-	-	927835-1 C	CuFe2
2-928966-2 D	-	-	-	-	-	CuSn4	vorversilbert PRESILVERED
2-928966-1 D	-	-	-	-	-	CuSn4	vorversilbert PRESILVERED
1-928966-3 D	-	-	-	-	-	CuFe2	vorversilbert PRESILVERED
-	-	-	-	-	-	-	-
928966-2 D	-	-	-	-	-	CuSn4	vorversilbert PRESILVERED
928966-1 D	-	-	-	-	-	CuFe2	vorversilbert PRESILVERED
1241962-1 B	-	-	-	-	-	CuFe2	vorverzinkt PRETINNED

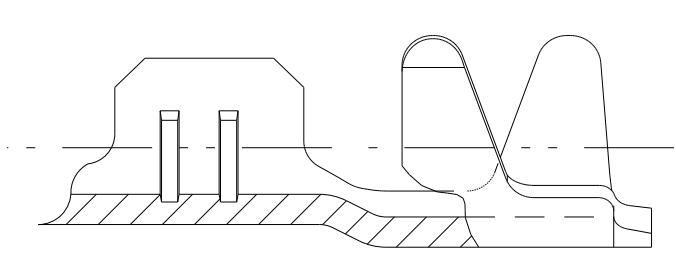
VERSION B

CRIMP DIMENSIONS (mm)	EXTRACTION TOOL	HAND TOOL	SINGLE WIRE SEAL	DEAD END PLUG	TE CONNECTIVITY ORDER - No.
0.5 - 1.0 FLR E = 2.8 G = 3.0 D _w = 1.1	MQC- Applicator 878337-2	539635-1 WITH DIE: mit Matrize 739736-2	-	-	963243-1 963244-1
>1.0 - 2.5 FLR E = 3.8 G = 4.1 D _w = 1.6	MQC- Applicator 878338-2	539635-1 WITH DIE: mit Matrize 539736-2	-	-	963244-1 963245-1
>2.5 - 4.0 FLR E = 4.6 G = 4.8 D _w = 2.4	MQC- Applicator 878441-2	539635-1 WITH DIE: mit Matrize 539736-2	-	-	963245-1 100132-1
>3.0 - 5.0 FLR E = 4.8 G = 5.2 D _w = 2.5	MQC- Applicator -	WITH DIE: mit Matrize	-	-	967011-1 963245-1

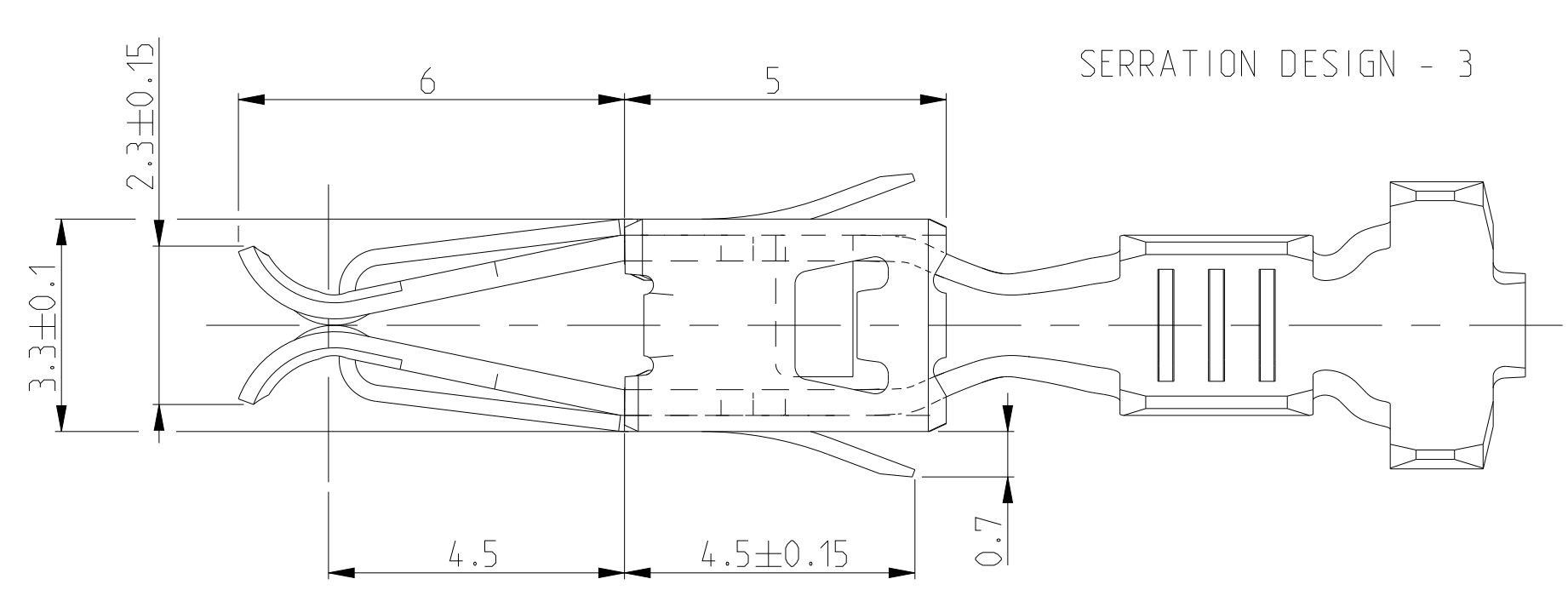
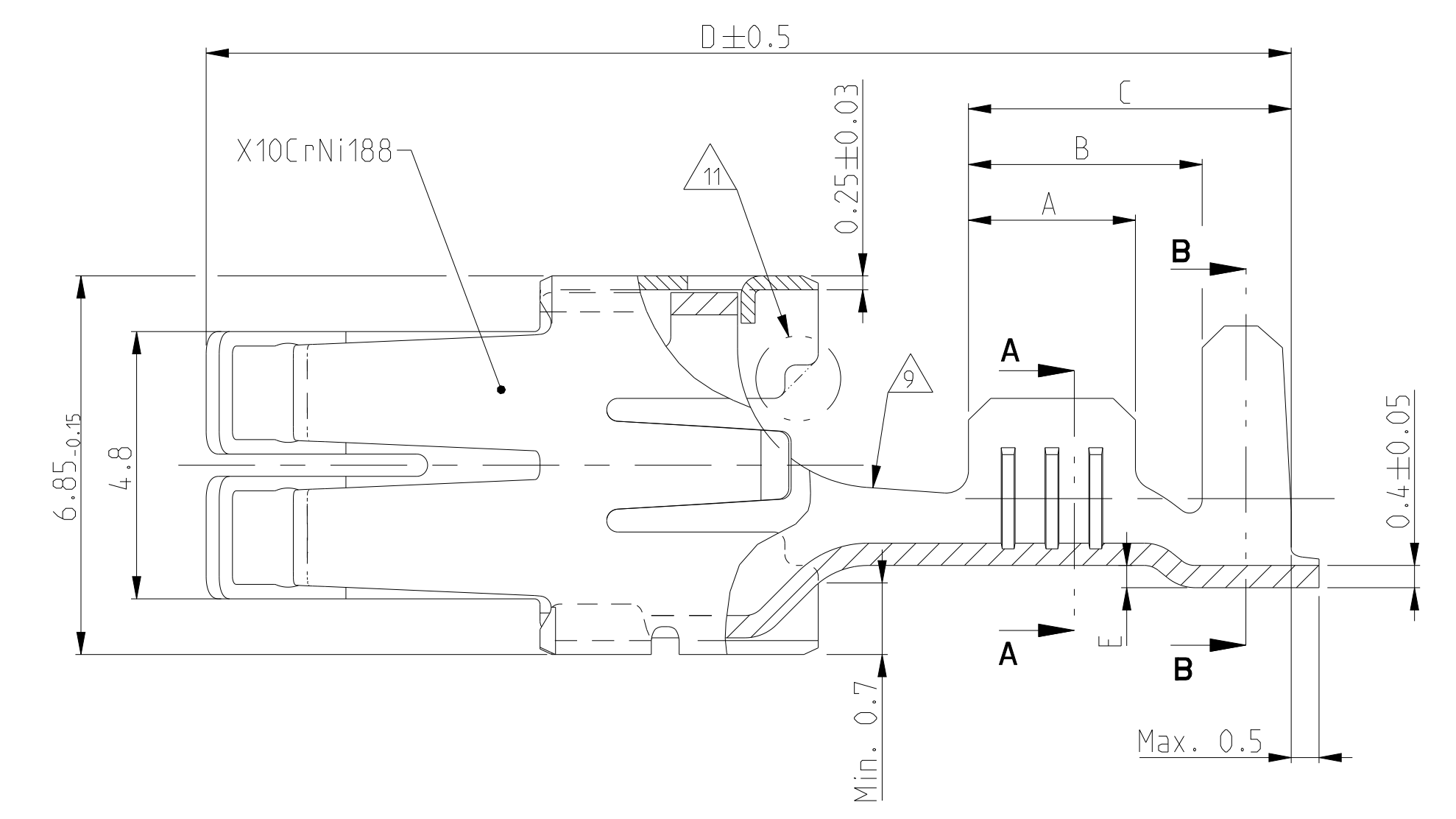
- CONTACT ZONE SELECTIVE PRE SILVER PLATED MIN 3-4.5 µm Kontaktzone selektiv vorversilbert min. 3-4.5 µm
- CONTACT ZONE SELECTIVE PRE SILVER PLATED MIN 1-1.5 µm Kontaktzone selektiv vorversilbert min. 1-1.5 µm
- CONTACT BODY: ELECTRO TIN PLATED OVER NICKEL CONTACT AREA: GOLD PLATED Kontaktkoerper: gal. verzinkt ueber Nickel Kontaktzone: vergoldet
- CONTACT BODY: ELECTRO TIN PLATED OVER NICKEL CONTACT AREA: SELECTIVE NICKEL PLATED 2-4 µm Kontaktkoerper: gal. verzinkt ueber Nickel Kontaktzone: selektiv vernickelt 2-4 µm
- CONTACT BODY: ELECTRO TIN PLATED OVER NICKEL TOUCHING AREA TO CANTILEVER SPRING: SELECTIVE AU PLATED OVER NICKEL CANTILEVER SPRING: COMPLETELY AU PLATED Kontaktkoerper: gal. verzinkt ueber Nickel Anlageflaeche zur Ueberfeder selektiv Au ueber Ni beschichtet Ueberfeder: komplett Au beschichtet



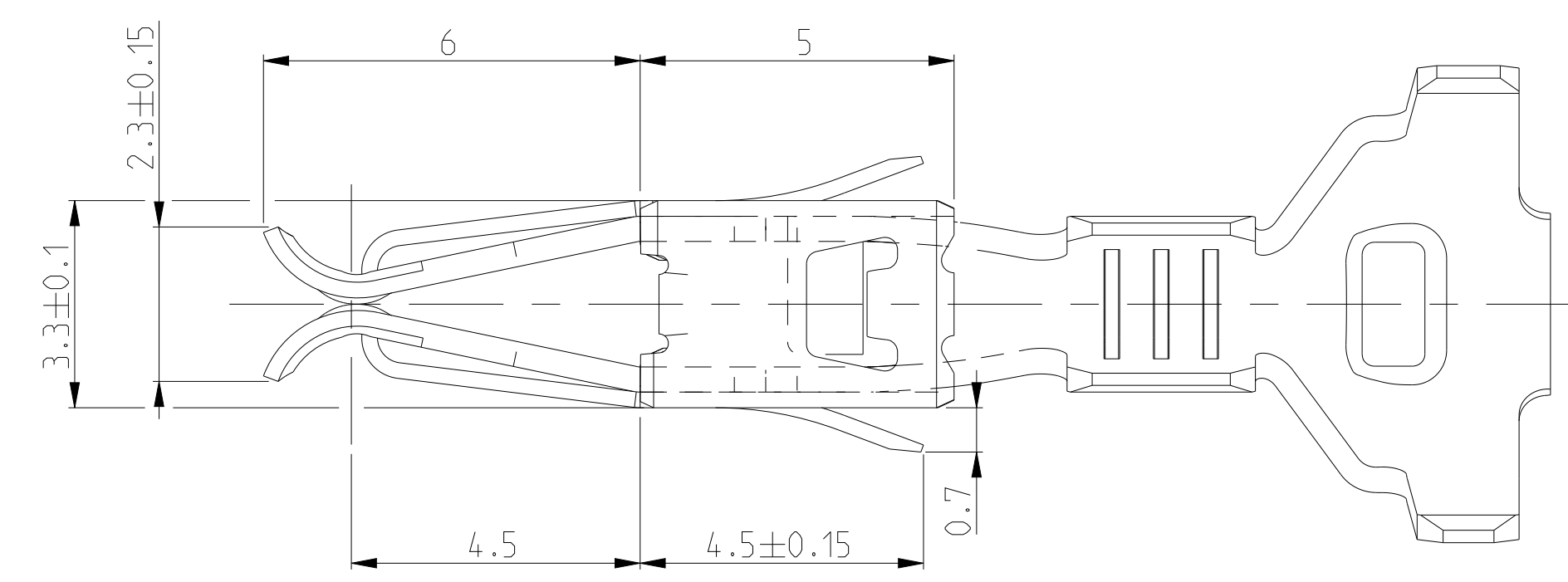
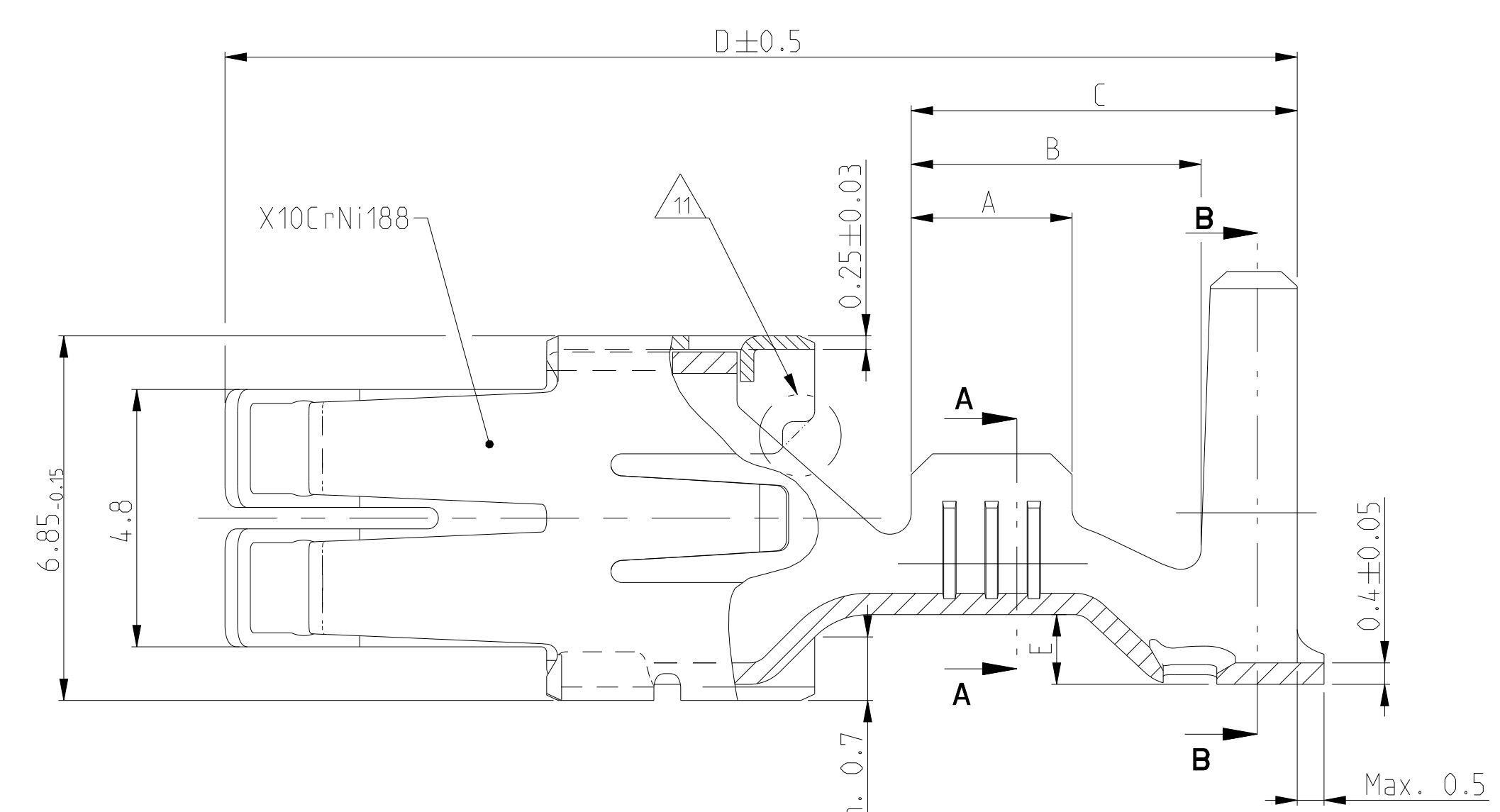
- WRAP CRIMP ONLY FOR PN: 927839, 927840, 928989 AND 928990 Umfassungscrimp nur bei PN: 927839, 927840, 928989 und 928990
- TRANSITION ONLY FOR PN 927827, 927828, 927829, 927830, 927833, 927834, 927837 AND 927838 Uebergang nur fuer PN 927827, 927828, 927829, 927830, 927833, 927834, 927837 und 927838
- 1-3 µm Sn28M LAYER FOR HIGHER TEMPERATURE REQUIREMENTS 1-3 µm Sn28M Schicht fuer hoehere Temperaturanforderungen
- DOTTED LINE IS ALTERNATIVE SHAPE Gestrichelte Linie alternative Form
- OBSELETE
- SEE APPLICATION SPEC. FOR PREFERRED STANDARD TO MEET NEW REQUIREMENT LV214-2 SLOW MOTION BENDING TEST Siehe Verarbeitungs Spezifikation fuer bevorzugten Standard um den neuen Anforderungen der LV214-2 Slow Motion Pruefung zu genuegen



VERSION A (UNSEALED / ungedichtet)

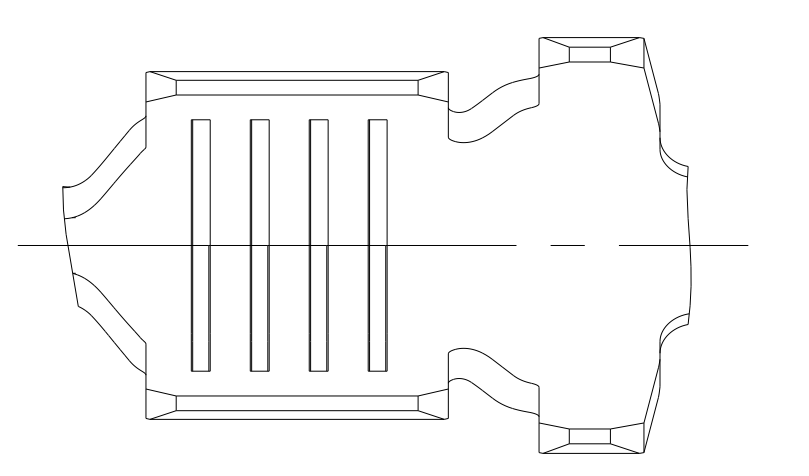


VERSION B (SINGLE WIRE SEAL / Einzel-Dichtungs-System)

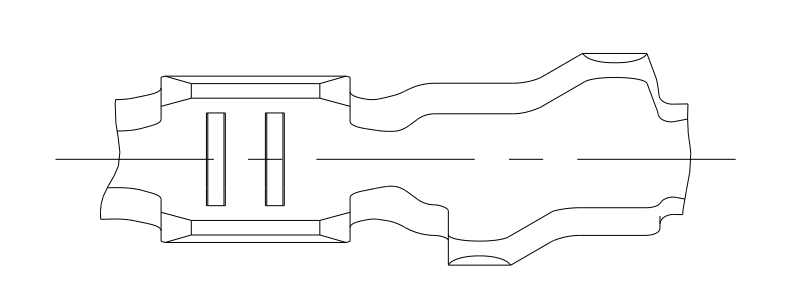


REV	DATE	APPD
B6	12JAN2018	JP
B9	090612020	SEK
B10	20FEB2021	JHM
B11	19MAY2021	JHM

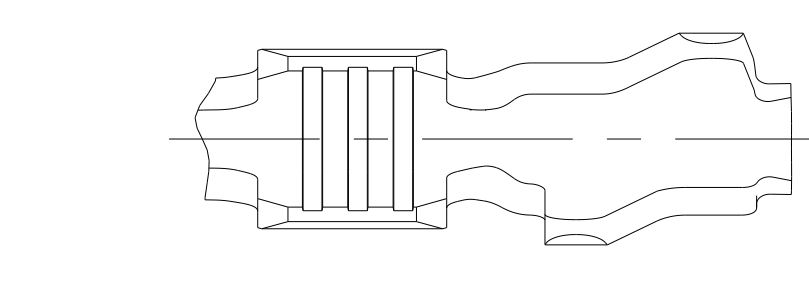
SERRATION DESIGN - 1



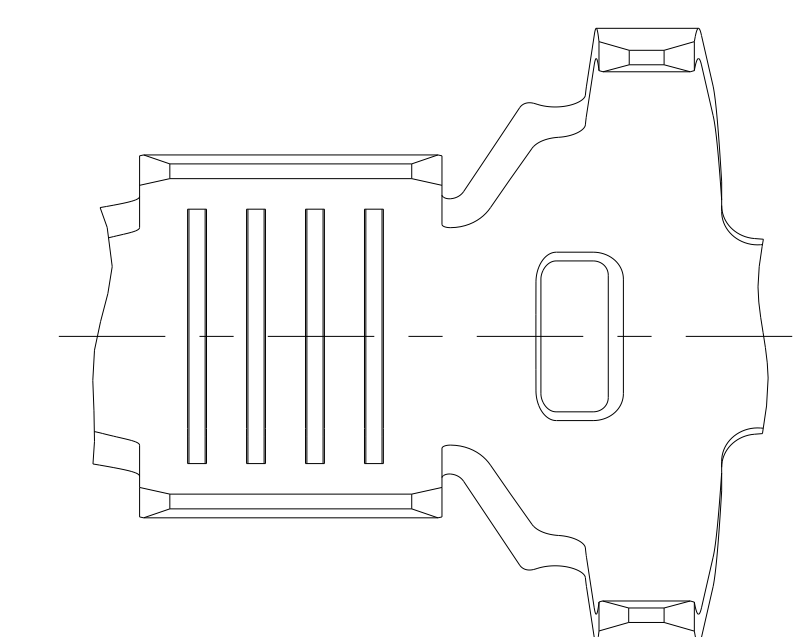
SERRATION DESIGN - 2



SERRATION DESIGN - 4



SERRATION DESIGN - 1



THIS DRAWING IS A CONTROLLED DOCUMENT. DIMENSIONING AND TOLERANCING PER ISO STANDARDS.

DATE: 20210111
 DRAWN BY: JHM
 CHECKED BY: JHM
 APPROVED BY: JHM

PROJECT SPEC: 108-18025
 APPLICATION SPEC: 114-18037

STANDARD POWER TIMER CONTACT
 Standard Power Timer Kontakt

SCALE: 10:1
 SHEET: 1 OF 1

Mouser Electronics

Authorized Distributor

Click to View Pricing, Inventory, Delivery & Lifecycle Information:

[TE Connectivity:](#)

[1241818-5](#)