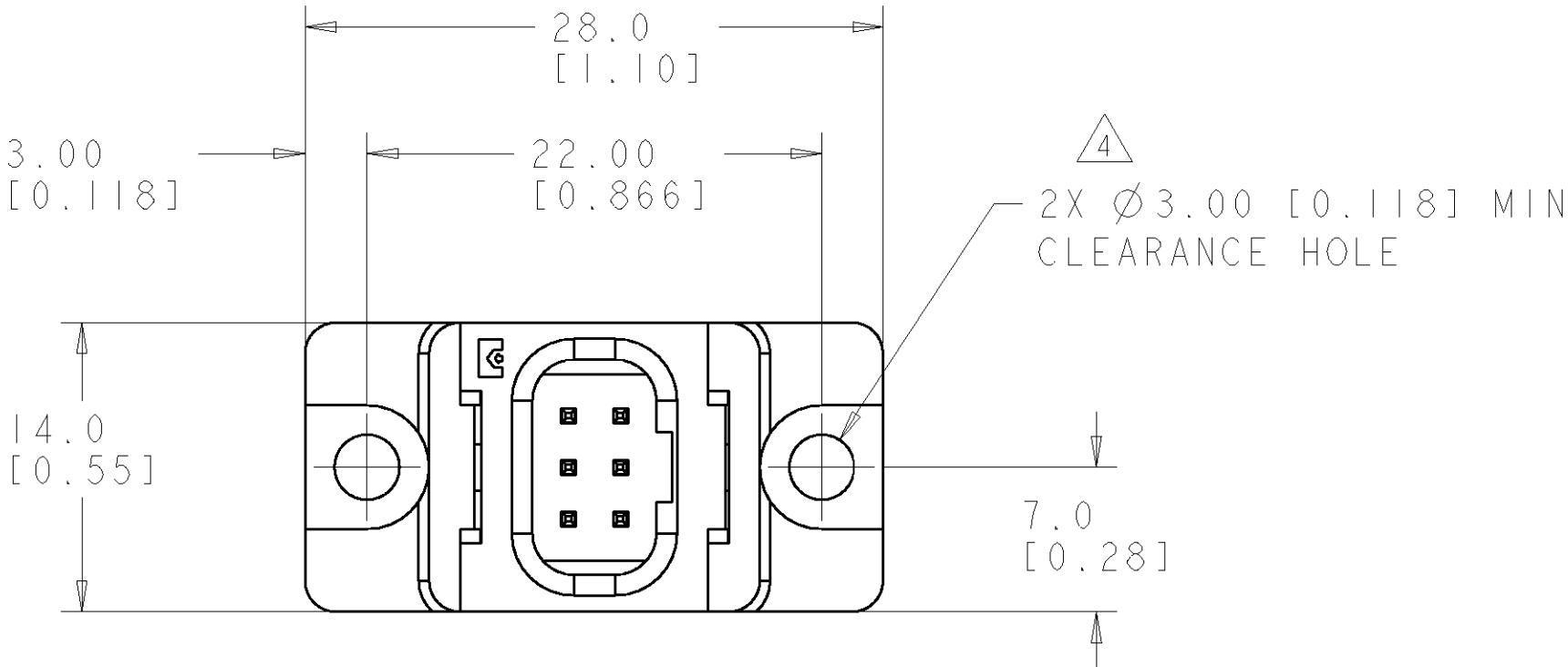


LOC	DIST	REVISIONS					
		P	LTR	DESCRIPTION	DATE	DWN	APVD
GP	00		A	RELEASED	13JUN2007	RG	PD



1. PART NUMBER CHANGES AND OR DESIGN CHANGES AFFECTING ITEM INTERCHANGEABILITY REQUIRE PRIOR TYCO ELECTRONICS APPROVAL AND AUTHORIZATION BY REVISION TO THIS DRAWING.

2. MATERIAL:  
INSULATORS - THERMOPLASTIC, GLASS REINFORCED  
COLOR: BLACK, UL94V-0 FLAMMABILITY RATED.  
SOLDER SIGNAL PINS-BRASS ALLOY  
COMPLIANT SIGNAL PIN-PHOSOPHOR BRONZE

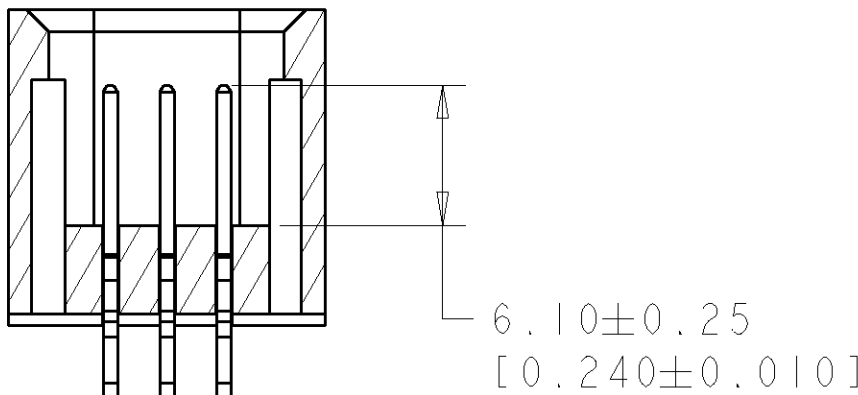
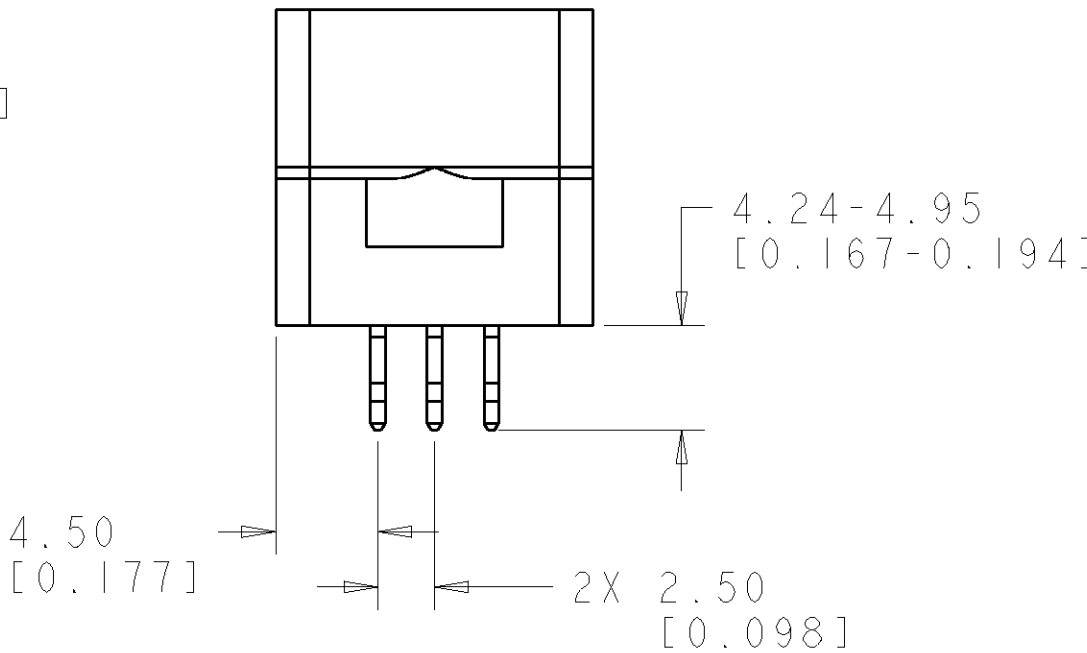
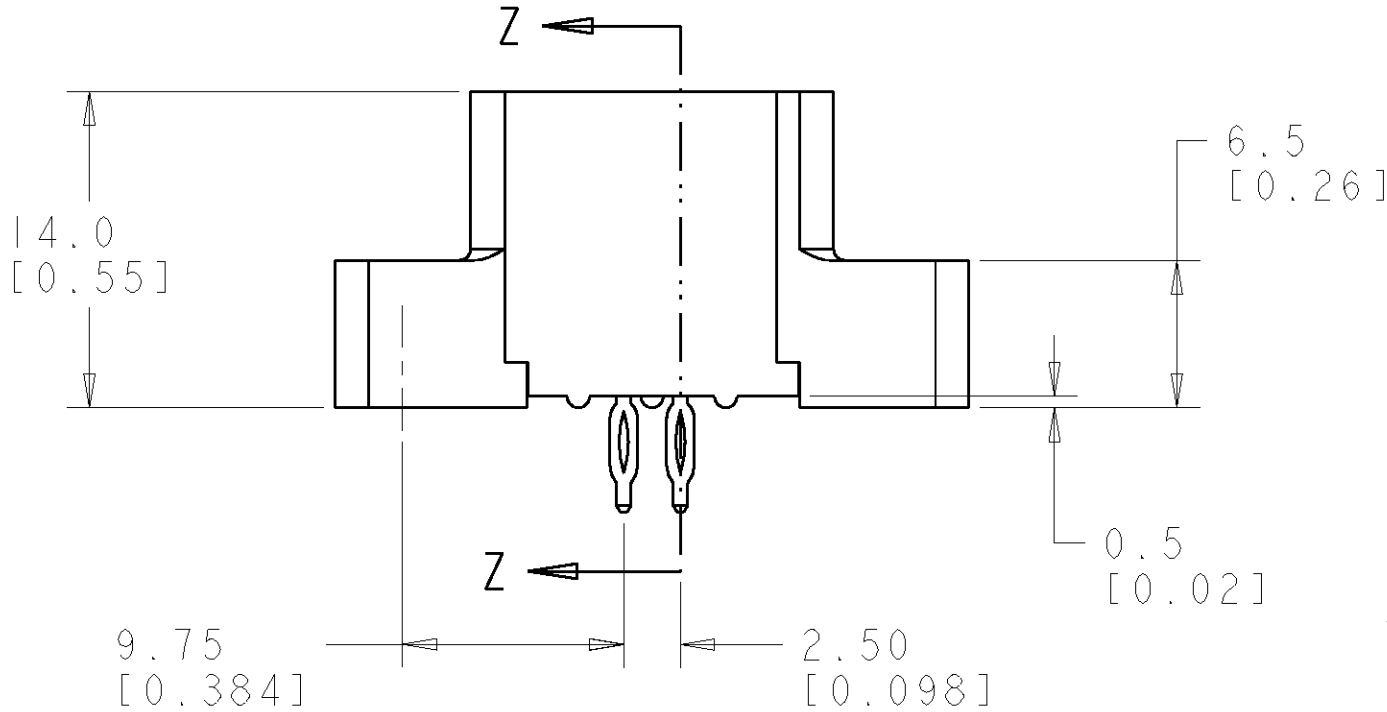
3. FINISH:  
CONTACTS - GOLD PLATE 0.76µM MIN. THK., OVER  
NICKEL 1.27µM MIN. THK  
COMPLIANT TAILS, TIN 1.02µM MIN. THK. OVER  
NICKEL 1.27µM MIN THK.

4 MOUNTING FLANGE ACCEPTS M4 OR #6 SCREWS (USER SUPPLIED).

5. CONTACT TYCO FOR RECOMMENDED PRESS TOOL DRAWING, FIX00229,

6. ITEMS PROVIDED TO THIS SPECIFICATION TO BE PERMANENTLY IDENTIFIED ON THE CONTAINER PER THE FOLLOWING IDENTIFIER LABEL  
YEAR WEEK

TYCO ELECTRONICS P/N  
XXXXXXXX-X  
DATE CODE (e.g. 0106)  
XXXX

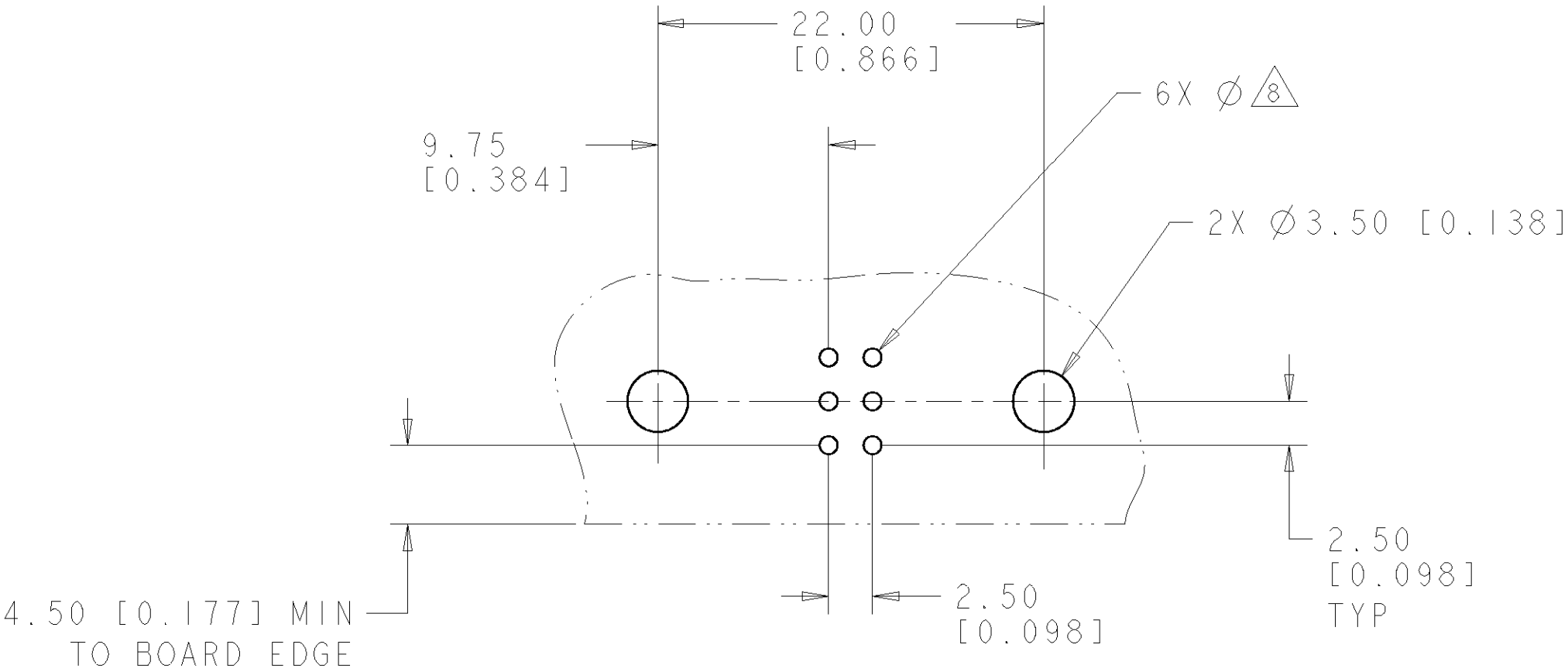


SECTION Z-Z

ELCON FLATPAQ

THIS DRAWING IS A CONTROLLED DOCUMENT FOR TYCO ELECTRONICS CORPORATION. IT IS SUBJECT TO CHANGE AND THE CONTROLLING ENGINEERING ORGANIZATION SHOULD BE CONTACTED FOR THE LATEST REVISION.		DWN R. GRZYBOWSKI 13JUN2007	Tyco Electronics Harrisburg, PA 17105-3608			
DIMENSIONS: mm[INCHES]		CHK P. DAMATO 13JUN2007	NAME PIN CONNECTOR, STRAIGHT COMPLIANT FLATPAQ			
TOLERANCES UNLESS OTHERWISE SPECIFIED: 0 PLC ±.5 [.020] 1 PLC ±.25 [.010] 2 PLC ±.25 [.010] 3 PLC ±. 4 PLC ±. ANGLES ±.5 FINISH		APVD S. FLICKINGER 13JUN2007	SIZE A200779			
MATERIAL -		PRODUCT SPEC -	CAGE CODE 6651777			
		APPLICATION SPEC -	DRAWING NO 6651777			
		WEIGHT -	RESTRICTED TO -			
		CUSTOMER DRAWING	SCALE 3:1 SHEET 1 OF 3 REV A			

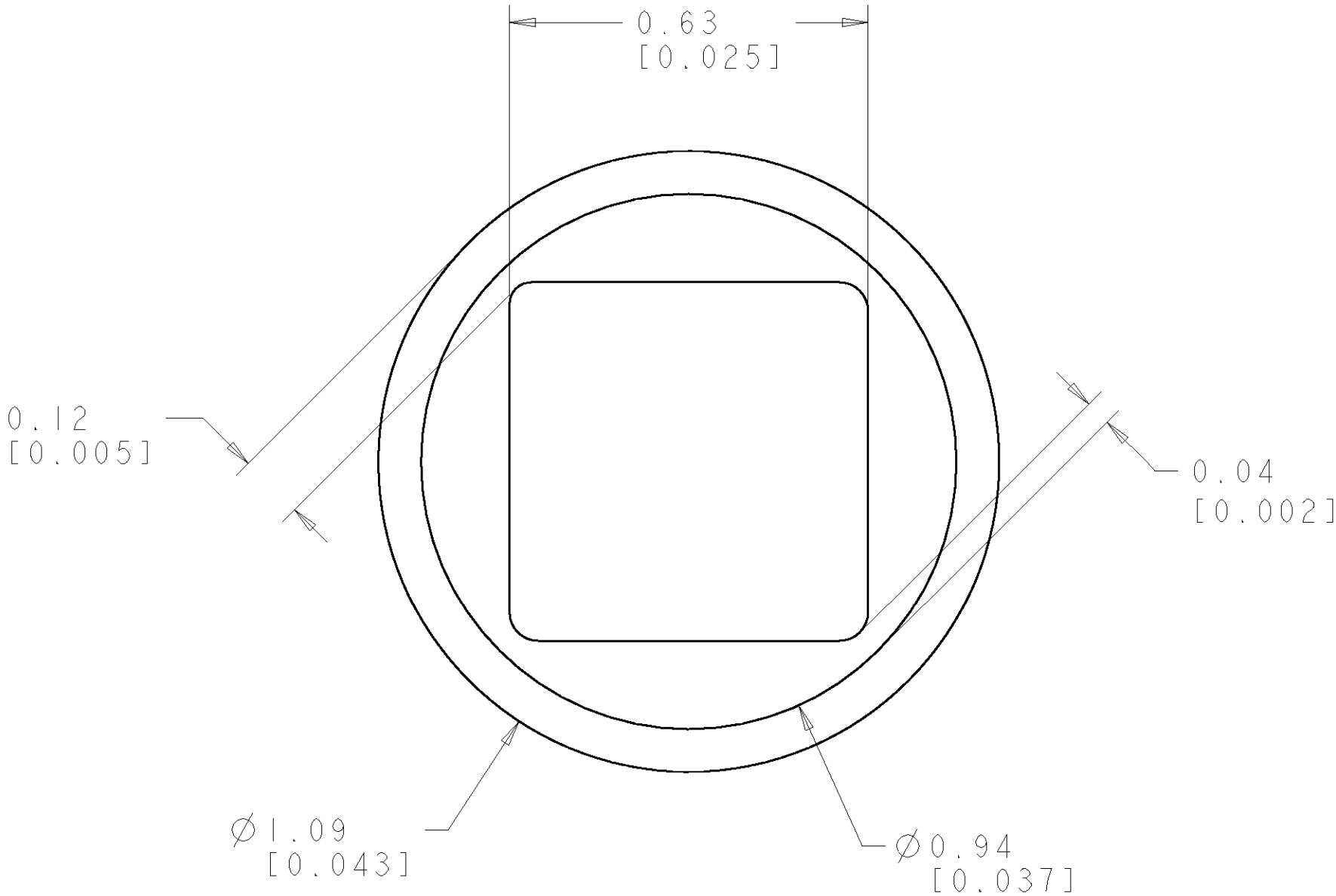
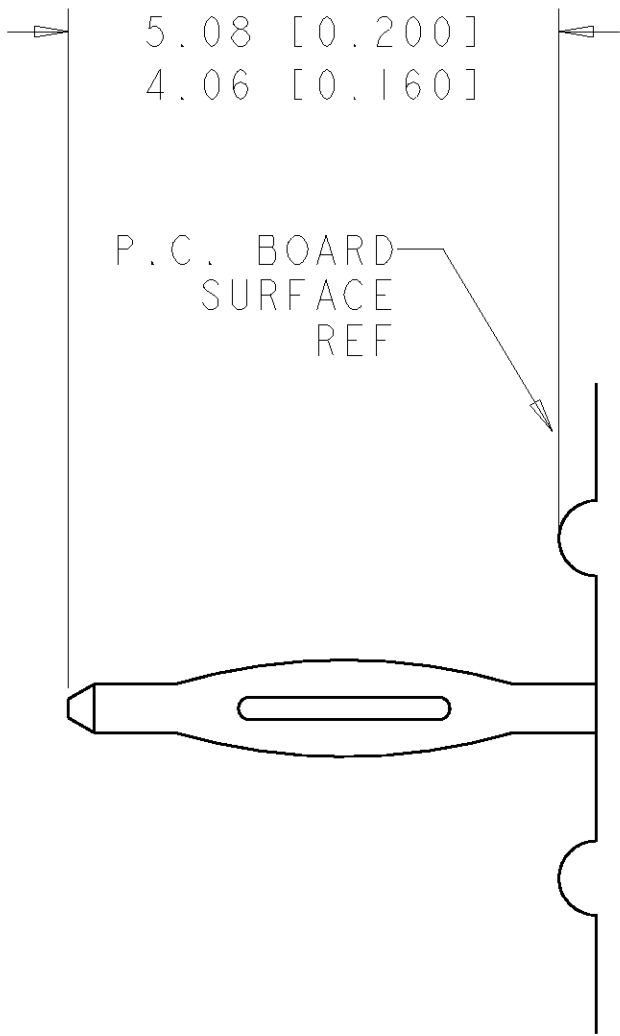
LOC	DIST	REVISIONS					
GP	00	P	LTR	DESCRIPTION	DATE	DWN	APVD
			-	SEE SHEET 1	-	-	-



PRINTED CIRCUIT LAYOUT  
COMPONENT SIDE

CONNECTOR	CATALOG MODULE #	QTY	SIZE NO.	CONTACT QTY	MATING PIN	MAX. CURRENT (PER CONTACT)	CONTACT SPACING	VOLTAGE RATING
PIN	FP412	1	22	6	.64 [.025] SQ.	3 amps	2.50 [.0984]	125 VOLTS
	FP500	1	MOUNTING FLANGE, LEFT					
	FP501	1	MOUNTING FLANGE, RIGHT					

LOC	DIST	REVISIONS				
GP	00	P	LTR	DESCRIPTION	DATE	APVD
		-		SEE SHEET 1	-	-



7. COMPLIANT PIN DETAIL  
SCALE 10 : 1  
INSERTION/EXTRACTION FORCES  
MAXIMUM PUSH IN: 133.3N PER PIN  
[30 LBS]  
MINIMUM PUSH OU: 44.4N PER PIN  
[10 LBS]

8. SOLDER TERMNIATION AREA  
SCALE 40:1  
RECOMMENDED PRINTED CIRCUT HOLE  
SOLDER OR COMPLIANT PRESS FIT  
DRILLED HOLE:  $\varnothing 1.15$  [.0453]  $\pm .013$  [.0005]  
COPPER PLATE: .025 [.0010] TO .050 [.0020]  
TIN PLATE: .0005 [.000020] MIN. (PER SURFACE)

ELCON FLATPAQ

THIS DRAWING IS A CONTROLLED DOCUMENT FOR TYCO ELECTRONICS CORPORATION IT IS SUBJECT TO CHANGE AND THE CONTROLLING ENGINEERING ORGANIZATION SHOULD BE CONTACTED FOR THE LATEST REVISION.		DWN R. GRZYBOWSKI 13 JUN 2007	Tyco Electronics Harrisburg, PA 17105-3608		
DIMENSIONS: mm[INCHES]		CHK P. DAMATO 13 JUN 2007	NAME PIN CONNECTOR, STRAIGHT COMPLIANT FLATPAQ		
TOLERANCES UNLESS OTHERWISE SPECIFIED:		APVD S. FLICKINGER 13 JUN 2007			
0 PLC $\pm .5$ [.020] 1 PLC $\pm .25$ [.010] 2 PLC $\pm .5$ [.020] 3 PLC $\pm .5$ [.020] 4 PLC $\pm .5$ [.020] ANGLES $\pm .5$ FINISH		PRODUCT SPEC - APPLICATION SPEC - WEIGHT -	SIZE A200779	CAGE CODE C-6651777	RESTRICTED TO -
MATERIAL -		CUSTOMER DRAWING		SCALE 3:1	SHEET 3 OF 3 REV A

# Mouser Electronics

Authorized Distributor

Click to View Pricing, Inventory, Delivery & Lifecycle Information:

[TE Connectivity:](#)

[6651777-1](#)