

ATLANTIC VERSION TERMINATOR INTERFACE ADAPTER	PART NUMBER	REVISION	DESCRIPTION	FEED TYPE	
	2266017-1	D	FINE CRIMP HEIGHT ADJUST	MECHANICAL	SUPERSEDED BY 5-2151227-1
	2266017-2	D	FINE CRIMP HEIGHT ADJUST	PNEUMATIC	SUPERSEDED BY 5-2151227-2
	2266017-5	D	FINE CRIMP HEIGHT ADJUST	SERVO LATCH PLATE	OBSOLETE
	2266017-6	D	NON CRIMP HEIGHT ADJUST	SERVO LATCH PLATE	OBSOLETE
	2266017-7	D	FINE CRIMP HEIGHT ADJUST	NONE	OBSOLETE
	7-2266017-7	A	CRIMP TOOLING KIT	-	

APPLICATOR DATA		
CRIMP	SIZE	TYPE
WIRE	2.03 mm [.080]	F
INSUL	4.06 mm [.160]	O

APPLICATOR INSTRUCTIONS 408-10389

TERMINAL DATA: TE TERMINAL	TE CRIMP SPECIFICATION
TERMINAL NAME: 2.8MM SENSOR - FLAT TYPE RECEPTACLE	
WIRE STRIP LENGTH	INSULATION DIAMETER RANGE
4.20-4.80 mm [.165-.189 IN]	Ø1.40-2.10 mm [.055-.083 IN]
TERMINAL APPLICATION SPECIFICATION	(B)114-18144-1
TERMINALS APPLIED	
TE TERMINAL	TE SEAL
(B) 968087-1	828904-1
(B) 968087-2	

TERMINAL DATA: TE TERMINAL	TE CRIMP SPECIFICATION
TERMINAL NAME: 2.8MM SENSOR - FLAT TYPE RECEPTACLE	
WIRE STRIP LENGTH	INSULATION DIAMETER RANGE
4.20-4.80 mm [.165-.189 IN]	Ø1.30-2.10 mm [.051-.083 IN]
TERMINAL APPLICATION SPECIFICATION	(A)114-18144-0
TERMINALS APPLIED	
TE TERMINAL	TE SEAL
(A) 967542-1	828904-1
(A) 967542-2	
(C) 1-968855-1	

WIRE SIZE	CRIMP HEIGHT mm [INCH]	CRIMP HEIGHT REFERENCE SETTING
1.00mm2	1.36+/-0.05 [.054+/- .002]	4.5
0.75mm2	1.27+/-0.05 [.050+/- .002]	5.6
0.50mm2	1.18+/-0.05 [.046+/- .002]	6.6

WIRE SIZE	CRIMP HEIGHT mm [INCH]	CRIMP HEIGHT REFERENCE SETTING
1.00mm2	1.20+/-0.05 [.047+/- .002]	6.3
0.75mm2	1.18+/-0.05 [.046+/- .002]	6.5
0.50mm2	1.15+/-0.05 [.045+/- .002]	6.8

- RECOMMENDED SPARE PARTS
- GREASE BEARING SURFACES LIGHTLY
- 3. LUBRICATE DAILY PER THE APPLICATOR INSTRUCTION SHEET SUPPLIED WITH THE APPLICATOR.
- APPLICATOR SPECIFIC DATA TO BE ENTERED INTO BLANK MEMORY CHIP AT ASSEMBLY. SEE BELOW FOR PART NUMBER:
 MECHANICAL FEED WITH "SMART APPLICATOR" CONVERSION: 8-2266017-4
 PNEUMATIC FEED WITH "SMART APPLICATOR" CONVERSION: 8-2266017-4
 SERVO FEED WITH "FINE CRIMP HEIGHT ADJUST": 8-2266017-5
 SERVO FEED WITH "NON-CRIMP HEIGHT ADJUST": 8-2266017-6
- 5. ADJUSTMENT OF THE STRIPPER MAY BE REQUIRED WHEN MOVING THE APPLICATOR BETWEEN BENCH AND LEADMAKER APPLICATIONS.
- APPLY PART NUMBER 1-23419-5 LOCTITE TO THREADS OF ITEM 62 & 180. APPLY PART NUMBER 2-23419-6 LOCTITE TO THREADS OF ITEM 242. FOR -6 ONLY APPLY PART NUMBER 1-23419-5 LOCTITE TO THREADS OF ITEM 37 & 180.
- GREASE THREADS, GROOVE AND O-RING ON ITEMS 35 & 252.
- MAGNET, ITEM 166 MUST BE ORIENTED CORRECTLY IN ORDER TO PROPERLY ACTUATE THE COUNTER.
- CRIMP HEIGHT REFERENCE SETTING WAS THE SETTING USED WHEN THE APPLICATOR WAS QUALIFIED AT THE FACTORY. ADJUSTMENT MAY BE NECESSARY WHEN RUNNING APPLICATOR IN THE FIELD.
- SPARE FEED CAM STORAGE LOCATION REFER TO INSTRUCTION SHEET FOR ADDITIONAL INFORMATION.
- TO CONVERT THE APPLICATOR TO A NON-CARRIER CUTTING STYLE, REMOVE ITEM 13 AND ATTACH TO THE LOCATION ON THE BACK SIDE OF THE HOUSING. REFER TO INSTRUCTION SHEET FOR ADDITIONAL INFORMATION.
- WHEN ASSEMBLING -6 NON-CRIMP HEIGHT ADJUST APPLICATOR USE SHIM PACK 2119957-2 TO ALIGN APPLICATOR'S MAXIMUM WIRE CRIMP HEIGHT AT NORMAL TERMINATOR SHUT HEIGHT
- THIS APPLICATOR APPLIES TERMINAL WITH A SEAL.
- APPLY TORQ-SEAL IN ALLEN SOCKET TO FILL HOLE AFTER FLAT HD HAS BEEN ADJUSTED TO CORRECT HEIGHT AT QUALIFICATION. APPLY #1-23419-5 LOC-TITE TO THREADS.
- THIS APPLICATOR IS SPECIFIC FOR USE IN A STRIPPER SEAL TERMINAING UNIT.

TERMINAL LUBRICANT IS RECOMMENDED.

***WARNING**
 ON INSTALLATION, SET WIRE DISC, ITEM 40 TO LARGEST WIRE SIZE SETTING. USE OF SETTINGS BELOW MINIMUM REQUIRED CRIMP HEIGHT SETTING WILL CAUSE DAMAGE TO CRIMP TOOLING.

7	-	-	1	-	-	2119957-2	APPLICATOR SHIM PACK	260	
	-	1	-	1	1	8-21084-0	O-RING, .676 ID, .070 DIA. MAT.	252	
	-	-	-	1	-	2119640-1	PUSH ROD, AIR FEED	250	
	-	-	-	1	-	1803259-1	BUSHING, FLANGED	249	
7	-77	-7	-6	-5	-2	-1	PART NO	DESCRIPTION	ITEM NO

ATLANTIC VERSION
 Shown on sheets 1 of 4 & 2 of 4
 (Pacific version shown on sheets 3 of 4 & 4 of 4)

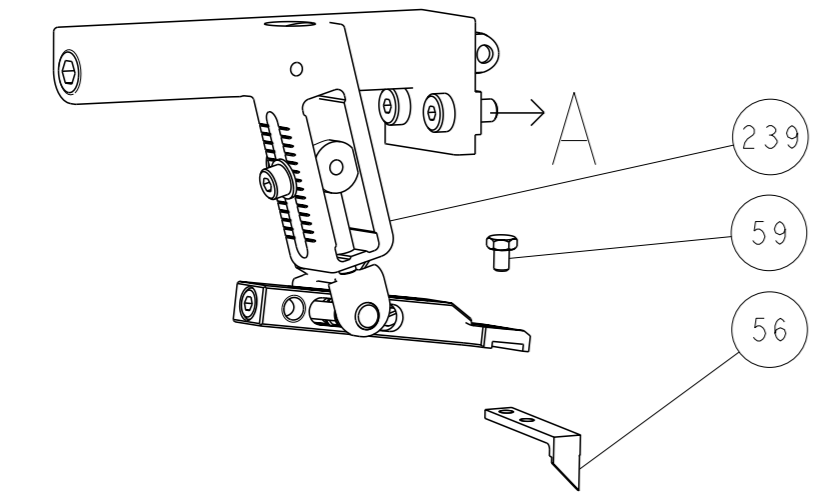
SET UP GAUGE	LOC	DIST	REVISIONS			
2119599-1	A	66	REV	DATE	BY	CHK
			C	11 JAN 2017	TB	GB
			C1	22 JUN 2017	MZ	KZ
			D	17 JUL 2017	KH	JDG
			D1	07 MAY 2018	JAH	JDG

REV	DATE	BY	CHK	DESCRIPTION	ITEM NO				
-	-	-	1	2119641-1	FEED CAM, AIR FEED	248			
-	1	-	1	2119798-1	DETENT PIN	247			
-	1	-	1	1-22279-3	SPRING, COMPRESSION	246			
-	-	1	-	2119758-1	RAM, AMP STYLE, SIDE FEED, NON-ADJ.	245			
-	1	1	1	2119082-9	CAM, SNAIL, INSULATION ADJUSTMENT	244			
-	1	1	1	2079764-1	WASHER, WAVE SPRING, CREST-TO-CREST	243			
-	1	1	1	2119083-1	RETAINER, INSULATION DIAL	242			
-	1	1	1	7-18023-7	SCR, SKT HD CAP M3 X 4.0	241			
-	-	2	2	2168400-6	SHCS, LOW HEAD, RoHS, M5 X 16	240			
-	-	-	-	2119580-1	MECHANICAL FEED ASSEMBLY	239			
-	-	-	1	2063440-1	AIR FEED MODULE	238			
-	-	1	1	2119740-2	TAG, IDENTIFICATION	213			
-	-	1	1	1901094-3	SPACER, FEEDER	198			
-	1	1	1	4-1722335-3	STRIPPER, SIDE FEED	182			
-	1	1	1	1-5018030-0	NUT, HEX, REG, RoHS, M3.5	181			
-	1	1	1	1-1752354-7	STANDOFF, HOLD-DOWN	180			
-	1	1	1	9931111-1	PIN, SLOTTED SPRING 3.0 X 20.0	177			
-	1	1	1	5-22280-0	SPRING, COMPRESSION	176			
-	1	1	1	1752353-3	GUIDE PIN, HOLDDOWN	175			
-	1	1	1	1901680-2	GUIDE PIN, HOLDDOWN	174			
-	-	-	2	21045-3	RING, RETAIN, EXTERN, 3/16 CRESCENT	172			
-	1	1	1	994969-1	MAGNET, RARE EARTH HIGH ENERGY	166			
-	REF	REF	REF	994970-2	COUNTER, MAGNETIC	164			
-	-	-	1	240638-1	SPRING, FEED FINGER	163			
-	-	-	1	3-23627-7	PIN, RETAIN, GRVD, 3/16 X .854	137			
-	-	-	1	2119799-1	HOLDER, FEED FINGER, AF	136			
-	-	REF	REF	-	SEE NOTE 4	135			
-	-	1	1	1633743-1	SERVO FEED LATCH ASM	133			
-	1	1	1	1-18028-2	WASHER, FLAT, REG M4	119			
-	-	REF	REF	-	2119944-1	FEED FINGER ASSEMBLY, SF	117		
-	1	1	1	2119955-1	ASSY, LUBRICATOR, SIDE FEED	113			
-	1	1	1	455888-5	SPACER, CRIMPER	82			
-	1	1	1	2119956-1	DOCUMENTATION PACKAGE	71			
-	1	-	1	2119740-1	TAG, IDENTIFICATION	67			
-	2	2	2	2168078-1	SCREW, DRIVE, RH, RoHS, 2 x .188	66			
-	1	-	1	2119793-1	LIMITER, ADJUSTMENT BOLT	63			
-	3	-	3	992763-5	SCR, SET, SOC, CONE PNT, M3 x 4.0	62			
-	1	1	1	2079383-4	SCR, BHSC, RoHS (M4 X 8)	60			
-	-	-	1	5-18022-5	SCR, HEX HD CAP, M4 X 6.0	59			
-	1	1	1	985575-5	SCR, FLT SKT HD CAP M3 X 16.0	57			
-	-	-	1	1338685-1	PAWL, FEED	56			
-	4	4	4	2168400-1	SHCS, LOW HEAD, RoHS, M4 X 12	54			
-	-	-	1	18023-9	SCR, SKT HD CAP M4 X 6.0	49			
-	-	-	-	2119652-1	FEED CAM, PRE FEED	48			
-	-	-	-	2119653-1	FEED CAM, POST FEED	47			
-	1	1	1	2-2119656-1	APPLICATOR BASIC ASSEMBLY, SF	46			
-	1	-	1	2119370-1	RAM, AMP STYLE, SIDE FEED	44			
-	1	1	1	2079383-7	SCR, BHSC, RoHS (M8 X 25)	41			
-	1	-	1	2119645-1	DISC, NUMBERED FA WIRE ADJUSTMENT	40			
-	1	-	1	2119957-1	APPLICATOR SHIM PACK	39			
-	1	1	1	2119644-1	RAM WASHER, PRECISION	38			
-	1	1	1	2119085-1	FA HEAD, ATLANTIC STYLE	37			
-	1	-	1	2119092-1	BOLT, ADJUSTMENT	35			
-	1	1	1	1752356-4	SUPPORT, TERMINAL	34			
-	2	2	2	2079383-5	SCR, BHSC, RoHS (M4 X 20)	33			
-	1	1	1	2161328-1	HEX HEAD, FLANGED, M5 x 8mm LONG	32			
-	1	1	1	1-1320908-2	SPACER, STRIP GUIDE	30			
-	1	1	1	2119959-2	ASSEMBLY, STRIP GUIDE	29			
-	1	1	1	455888-3	SPACER, CRIMPER	28			
-	1	1	1	1320928-2	STRIP GUIDE	24			
-	1	1	1	2119806-1	INSERT, SHEAR	13			
-	1	1	1	3-22280-3	SPRING, COMPRESSION	12			
-	1	1	1	1-356885-4	STOP, SHEAR	11			
-	1	1	1	2119805-1	SHEAR HOLDER, FRONT	10			
-	1	1	1	318707-1	FLOATING SHEAR, FRONT	9			
-	1	1	1	1333204-1	ANVIL, COMBINATION	8			
-	-	-	-	-	-	7			
-	-	-	-	-	-	6			
-	1	1	1	2119781-1	DEPRESSOR, SHEAR	5			
-	1	1	1	238011-9	BLOCK, CRIMPER SPACER	4			
-	1	1	1	3-2119784-1	CRIMPER, INSULATION O PREMIUM	3			
-	1	1	1	1-455888-0	SPACER, CRIMPER	2			
-	1	1	1	1-456405-6	CRIMPER, WIRE PREMIUM	1			
7	-77	-7	-6	-5	-2	-1	PART NO	DESCRIPTION	ITEM NO

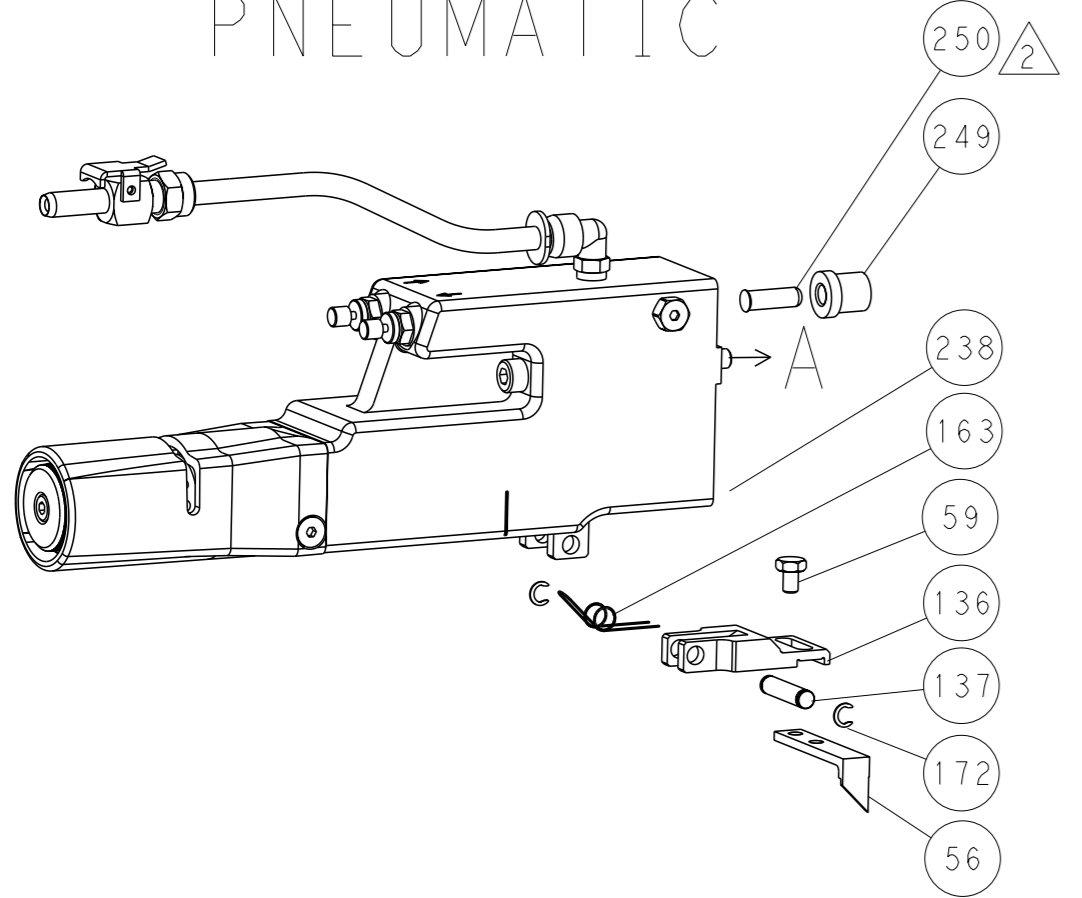
DIMENSIONS: 		TOLERANCES UNLESS OTHERWISE SPECIFIED: 0 PLC +/- 1 PLC +/- 2 PLC +/- 3 PLC +/- 4 PLC +/- 5 PLC +/- ANGLES FINISH +/-		OWN X ZHAO 13AUG2013 CHK T ELBIN 13AUG2013 APVD T ELBIN 13AUG2013 PRODUCT SPEC APPLICATION SPEC WEIGHT Customer Accessible Production Drawing		NAME Ocean Side Feed Applicator SIZE CASE CODE DRAWING NO RESTRICTED TO A1 00779 ©=2266017 SCALE 1:2 SHEET 1 of 4 REV D1	
-----------------	--	---	--	---	--	---	--

LOC		DIST		REVISIONS			
A	66	P	LYR	DESCRIPTION	DATE	OWN	APVD
		-		SEE SHEET 1			

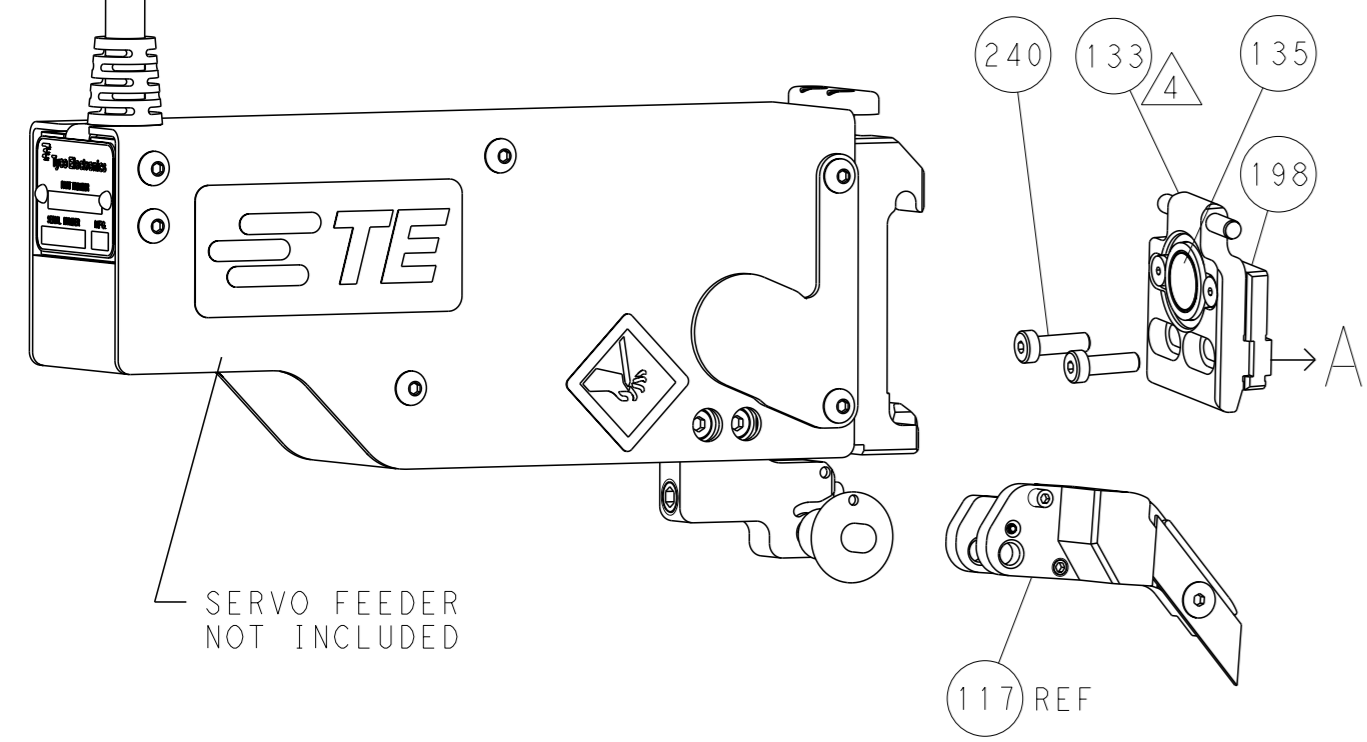
FEED TYPE MECHANICAL



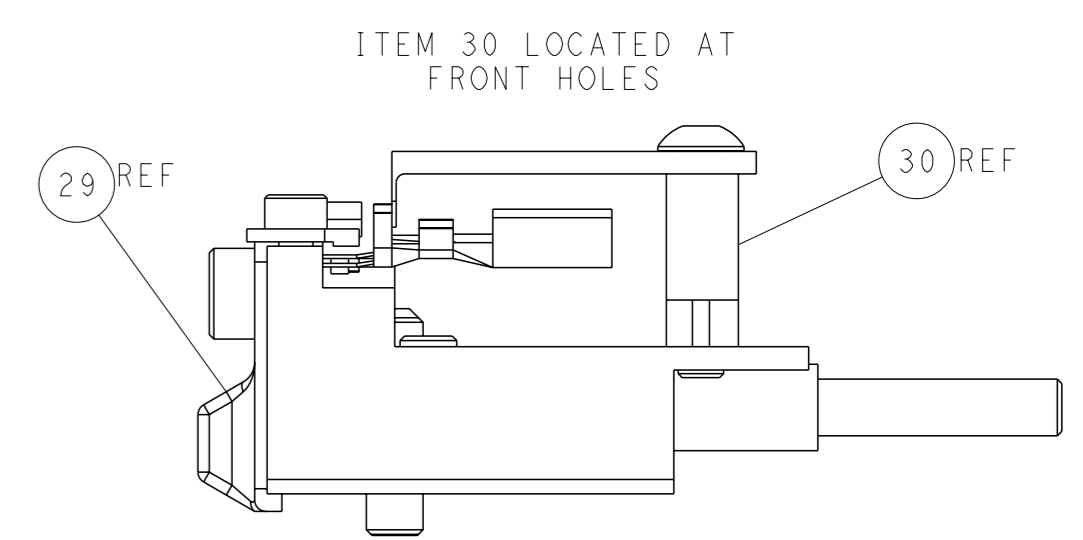
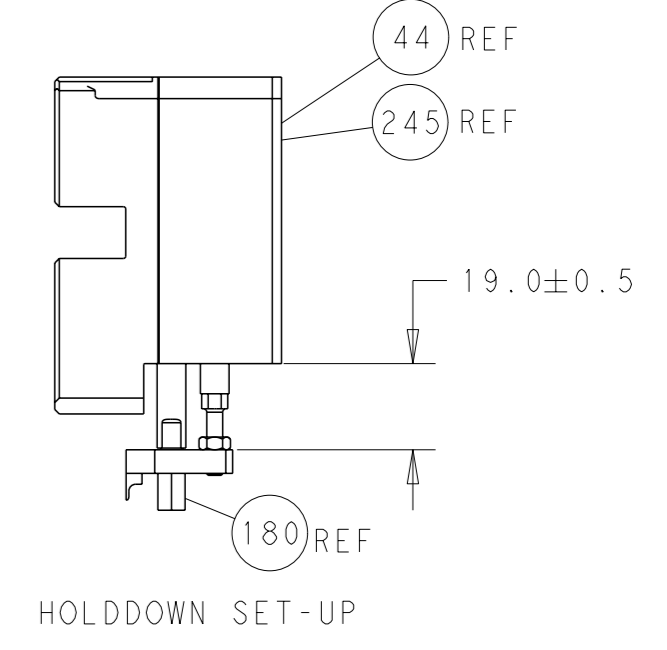
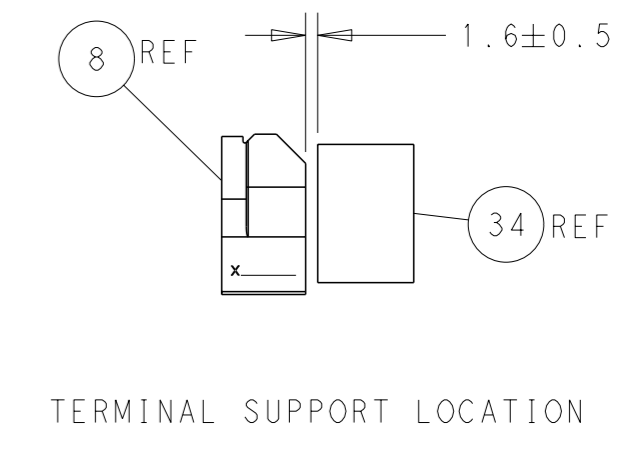
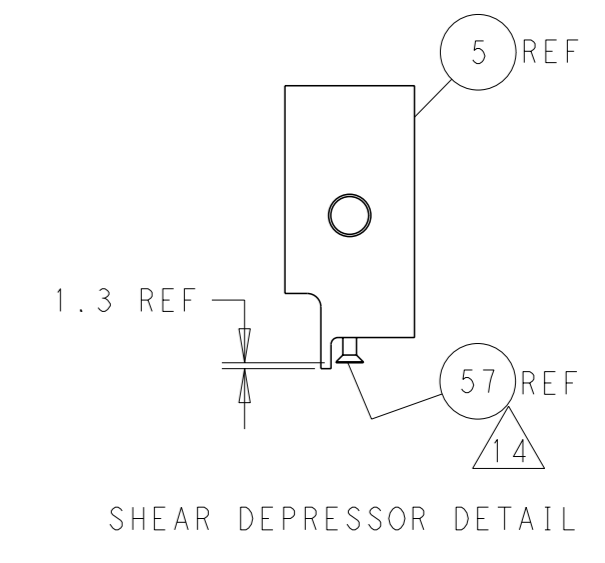
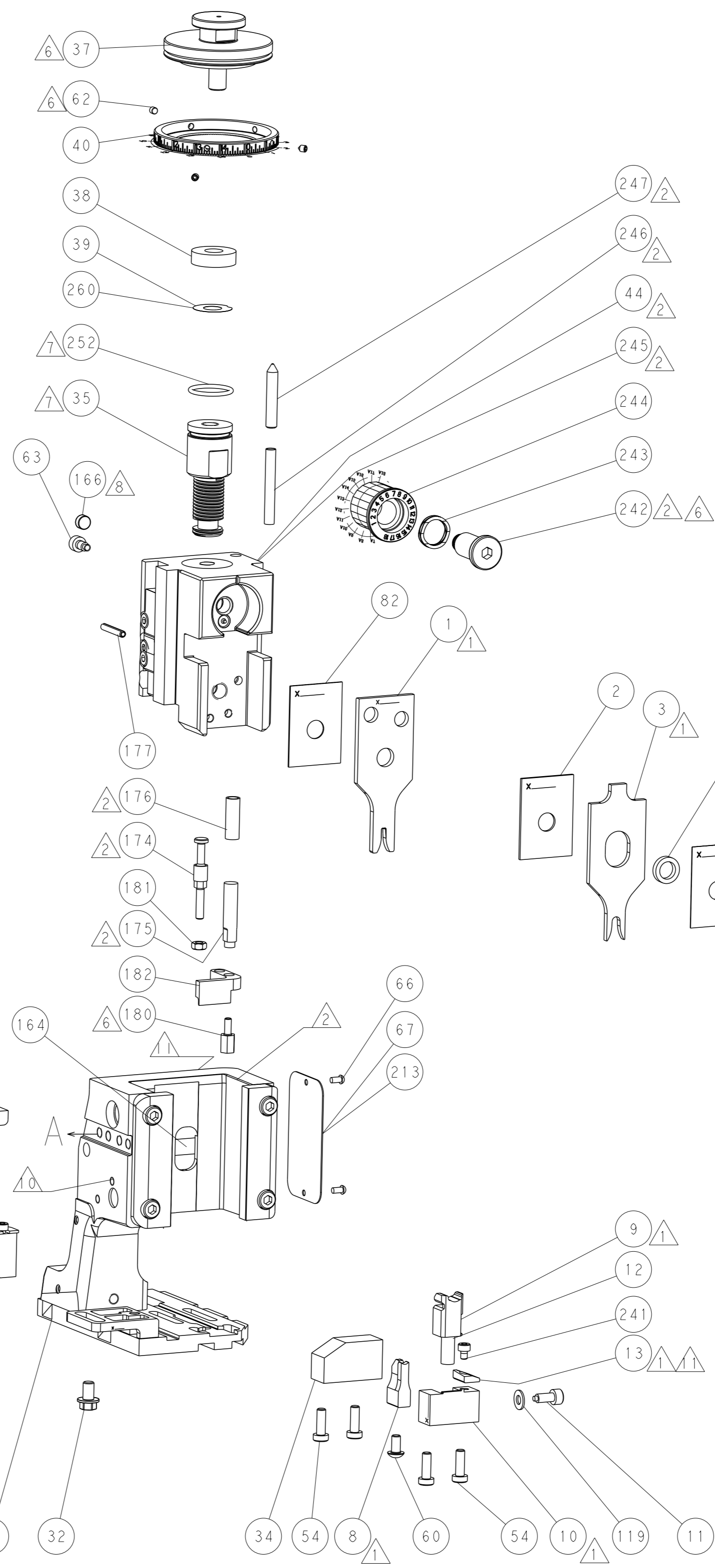
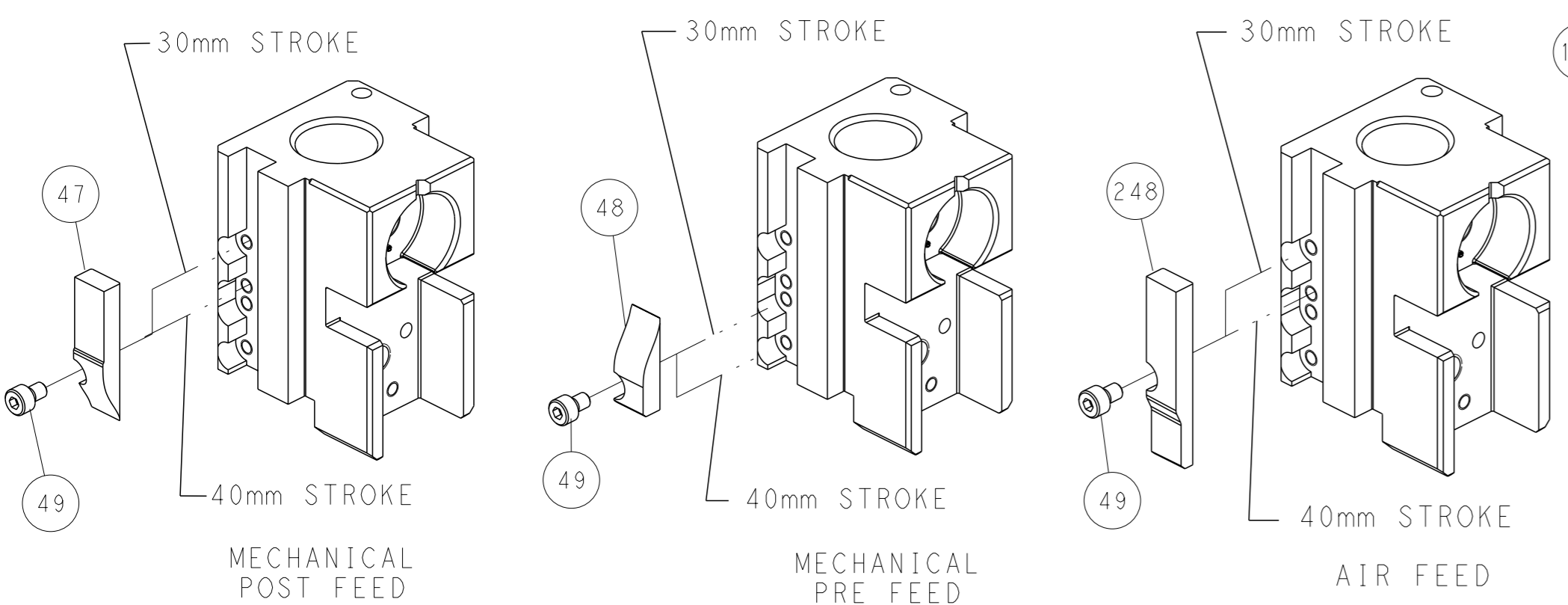
PNEUMATIC



SERVO LATCH PLATE



CAM POSITIONS



ATLANTIC VERSION
 Shown on sheets 1 of 4 & 2 of 4
 (Pacific version shown on sheets 3 of 4 & 4 of 4)

DIMENSIONS:		TOLERANCES UNLESS OTHERWISE SPECIFIED:		OWN X_ZHAO 13AUG2013		TE Connectivity	
mm	0 PLC ±	1 PLC ±	2 PLC ±	3 PLC ±	4 PLC ±	5 PLC ±	Harrisburg, PA 17105-3608
MATERIAL:	FINISH:	WEIGHT:	SCALE:	APVD T_ELFIN 13AUG2013	NAME	SIZE	RESTRICTED TO
			1:2	Customer Accessible Production Drawing	Ocean Side Feed Applicator	A1 00779 C=2266017	
				SHEET 2 of 4		REV D1	

THIS DRAWING IS UNPUBLISHED. RELEASED FOR PUBLICATION. BY TYCO ELECTRONICS CORPORATION. ALL RIGHTS RESERVED.

PACIFIC VERSION TERMINATOR INTERFACE ADAPTER	PART NUMBER	REVISION	DESCRIPTION	FEED TYPE	
	2-2266017-1	D	FINE CRIMP HEIGHT ADJUST	MECHANICAL	OBSOLETE
	2-2266017-2	D	FINE CRIMP HEIGHT ADJUST	PNEUMATIC	OBSOLETE
	2-2266017-5	D	FINE CRIMP HEIGHT ADJUST	SERVO LATCH PLATE	OBSOLETE
	2-2266017-7	D	FINE CRIMP HEIGHT ADJUST	NONE	OBSOLETE
	7-2266017-7	A	CRIMP TOOLING KIT	-	

APPLICATOR DATA		
CRIMP	SIZE	TYPE
WIRE	2.03 mm [.080]	F
INSUL	4.06 mm [.160]	O
APPLICATOR INSTRUCTIONS 408-10389		

TERMINAL DATA: TE TERMINAL		TE CRIMP SPECIFICATION	
TERMINAL NAME: 2.8MM SENSOR - FLAT TYPE RECEPTACLE			
WIRE STRIP LENGTH		INSULATION DIAMETER RANGE	
4.20-4.80 mm [1.65-.189 IN]		Ø1.40-2.10 mm [0.055-.083 IN]	
TERMINAL APPLICATION SPECIFICATION	(B)114-18144-1		
TERMINALS APPLIED			
TE TERMINAL	TE TERMINAL	TE SEAL	TE SEAL
(B) 968087-1	(B) 1703034-1		828904-1
(B) 968087-2	(B) 1703034-2		

TERMINAL DATA: TE TERMINAL		TE CRIMP SPECIFICATION	
TERMINAL NAME: 2.8MM SENSOR - FLAT TYPE RECEPTACLE			
WIRE STRIP LENGTH		INSULATION DIAMETER RANGE	
4.20-4.80 mm [1.65-.189 IN]		Ø1.30-2.10 mm [0.051-.083 IN]	
TERMINAL APPLICATION SPECIFICATION	(A)114-18144-0		
TERMINALS APPLIED			
TE TERMINAL	TE TERMINAL	TE SEAL	TE SEAL
(A) 967542-1	(C) 1-968855-2		828904-1
(A) 967542-2	(C) 1-968855-3		
(C) 1-968855-1	(C) 1-968855-4		

WIRE SIZE	CRIMP HEIGHT mm [INCH]	CRIMP HEIGHT REFERENCE SETTING
1.00mm2	1.36+/-0.05 [0.054+/-0.002]	4.5
0.75mm2	1.27+/-0.05 [0.050+/-0.002]	5.6
0.50mm2	1.18+/-0.05 [0.046+/-0.002]	6.6

WIRE SIZE	CRIMP HEIGHT mm [INCH]	CRIMP HEIGHT REFERENCE SETTING
1.00mm2	1.20+/-0.05 [0.047+/-0.002]	6.3
0.75mm2	1.18+/-0.05 [0.046+/-0.002]	6.5
0.50mm2	1.15+/-0.05 [0.045+/-0.002]	6.8

- RECOMMENDED SPARE PARTS
- GREASE BEARING SURFACES LIGHTLY
- 3. LUBRICATE DAILY PER THE APPLICATOR INSTRUCTION SHEET SUPPLIED WITH THE APPLICATOR.
- APPLICATOR SPECIFIC DATA TO BE ENTERED INTO BLANK MEMORY CHIP AT ASSEMBLY. SEE BELOW FOR PART NUMBER:
MECHANICAL FEED WITH "SMART APPLICATOR" CONVERSION: 8-2266017-4
PNEUMATIC FEED WITH "SMART APPLICATOR" CONVERSION: 8-2266017-4
SERVO FEED WITH "FINE CRIMP HEIGHT ADJUST": 8-2266017-5
- 5. ADJUSTMENT OF THE STRIPPER MAY BE REQUIRED WHEN MOVING THE APPLICATOR BETWEEN BENCH AND LEADMAKER APPLICATIONS.
- APPLY PART NUMBER 1-23419-5 LOCTITE TO THREADS OF ITEM 62 & 180. APPLY PART NUMBER 2-23419-6 LOCTITE TO THREADS OF ITEM 242.
- GREASE THREADS, GROOVE AND O-RING ON ITEMS 139 & 152.
- MAGNET MUST BE ORIENTED CORRECTLY IN ORDER TO PROPERLY ACTUATE THE COUNTER.
- CRIMP HEIGHT REFERENCE SETTING WAS THE SETTING USED WHEN THE APPLICATOR WAS QUALIFIED AT THE FACTORY. ADJUSTMENT MAY BE NECESSARY WHEN RUNNING APPLICATOR IN THE FIELD.
- SPARE FEED CAM STORAGE LOCATION REFER TO INSTRUCTION SHEET FOR ADDITIONAL INFORMATION.
- TO CONVERT THE APPLICATOR TO A NON-CARRIER CUTTING STYLE, REMOVE ITEM 13 AND ATTACH TO THE LOCATION ON BACK SIDE OF THE HOUSING. REFER TO INSTRUCTION SHEET FOR ADDITIONAL INFORMATION.
- THIS APPLICATOR APPLIES TERMINAL WITH A SEAL.
- APPLY TORO-SEAL IN ALLEN SOCKET TO FILL HOLE AFTER FLAT HD HAS BEEN ADJUSTED TO CORRECT HEIGHT AT QUALIFICATION. APPLY #1-23419-5 LOC-TITE TO THREADS.
- THIS APPLICATOR IS SPECIFIC FOR USE IN A STRIPPER SEAL TERMINAING UNIT.
- TERMINAL LUBRICANT IS RECOMMENDED.

***WARNING**
ON INSTALLATION, SET WIRE DISC, ITEM 40 TO LARGEST WIRE SIZE SETTING. USE OF SETTINGS BELOW MINIMUM REQUIRED CRIMP HEIGHT SETTING WILL CAUSE DAMAGE TO CRIMP TOOLING.

-	1	1	1	1	2119782-1	FINE ADJUST HEAD ASM, PACIFIC STYLE	251
-	-	-	1	-	2119640-1	PUSH ROD, AIR FEED	250
-77	-27	-25	-22	-21	PART NO	DESCRIPTION	ITEM NO

PACIFIC VERSION
Shown on sheets 3 of 4 & 4 of 4
(Atlantic version shown on sheets 1 of 4 & 2 of 4)

SET UP GAUGE	LOC	DIST	REVISIONS					
2119599-1	A	66	#	DATE	DESCRIPTION	DATE	OWN	APVD
			-		SEE SHEET 1			

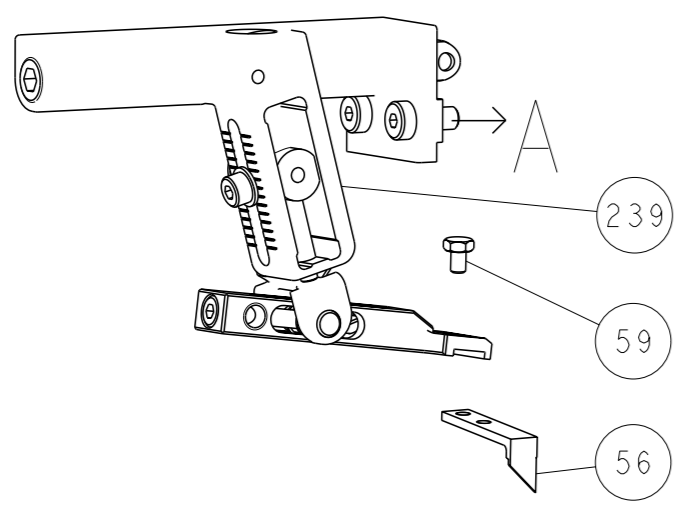
-	-	-	1	-	1803259-1	BUSHING, FLANGED	249
-	1	1	1	1	1-22279-3	SPRING, COMPRESSION	246
-	1	1	1	1	2119082-9	CAM, SNAIL, INSULATION ADJUSTMENT	244
-	1	1	1	1	2079764-1	WASHER, WAVE SPRING, CREST-TO-CREST	243
	-	1	1	1	2119083-1	RETAINER, INSULATION DIAL	242
-	1	1	1	1	7-18023-7	SCR, SKT HD CAP M3 X 4.0	241
-	-	2	-	-	2168400-6	SHCS, LOW HEAD, RoHS, M5 X 16	240
-	-	-	-	1	2119580-1	MECHANICAL FEED ASSEMBLY	239
-	-	-	1	-	2063440-1	AIR FEED MODULE	238
-	-	-	1	-	2119740-2	TAG, IDENTIFICATION	213
-	-	-	1	-	1901094-3	SPACER, FEEDER	198
-	1	1	1	1	4-1722335-3	STRIPPER, SIDE FEED	182
-	1	1	1	1	1-5018030-0	NUT, HEX, REG, RoHS, M3.5	181
	-	1	1	1	1-1752354-7	STANDOFF, HOLD-DOWN	180
-	1	1	1	1	993111-1	PIN, SLOTTED SPRING 3.0 X 20.0	177
-	1	1	1	1	5-22280-0	SPRING, COMPRESSION	176
-	1	1	1	1	1752353-3	GUIDE PIN, HOLDDOWN	175
-	1	1	1	1	1901680-2	GUIDE PIN, HOLDDOWN	174
-	-	-	2	-	21045-3	RING, RETAIN, EXTERN, 3/16 CRESCENT	172
	-	1	1	1	994969-1	MAGNET, RARE EARTH HIGH ENERGY	166
-	REF	REF	REF	REF	994970-2	COUNTER, MAGNETIC	164
-	-	-	1	-	240638-1	SPRING, FEED FINGER	163
	-	1	1	1	8-21084-1	O-RING, .801 ID, .070 DIA, MAT.	152
-	-	-	1	-	2119641-2	FEED CAM, AIR FEED	151
-	1	1	1	1	2119798-2	DETENT PIN	145
-	1	1	1	1	2079383-8	SCR, BHSC, RoHS (M4 X 16)	144
-	4	4	4	4	2168400-5	SHCS, LOW HEAD, RoHS, M4 X 20	143
-	-	-	-	1	2119653-2	FEED CAM, POST FEED	142
-	1	1	1	1	2-2119656-2	APPLICATOR BASIC ASSEMBLY, SF	141
	-	1	1	1	2119650-1	RAM, ASIAN STYLE, SIDE FEED	140
-	1	1	1	1	2119092-2	BOLT, ADJUSTMENT	139
-	-	-	1	-	3-23627-7	PIN, RETAIN, GRVD, 3/16 X .854	137
-	-	-	1	-	2119799-1	HOLDER, FEED FINGER, AF	136
-	-	REF	-	-	SEE NOTE 4	MEMORY CHIP, PROGRAMMED	135
-	-	1	-	-	1633743-1	SERVO FEED LATCH ASM	133
-	1	1	1	1	1-18028-2	WASHER, FLAT, REG M4	119
	-	REF	-	-	2119944-1	FEED FINGER ASSEMBLY, SF	117
-	1	1	1	1	2119955-1	ASSY, LUBRICATOR, SIDE FEED	113
-	1	1	1	1	455888-5	SPACER, CRIMPER	82
-	1	1	1	1	2119956-1	DOCUMENTATION PACKAGE	71
-	1	-	1	1	2119740-1	TAG, IDENTIFICATION	67
-	2	2	2	2	2168078-1	SCREW, DRIVE, RH, RoHS, 2 x .188	66
	-	1	1	1	2119793-1	LIMITER, ADJUSTMENT BOLT	63
-	3	3	3	3	992763-5	SCR, SET, SOC, CONE PNT, M3 x 4.0	62
-	-	-	1	1	5-18022-5	SCR, HEX HD CAP, M4 X 6.0	59
	-	1	1	1	985575-5	SCR, FLT SKT HD CAP M3 X 16.0	57
-	-	-	1	1	1338685-1	PAWL, FEED	56
-	-	-	1	2	18023-9	SCR, SKT HD CAP M4 X 6.0	49
-	-	-	-	1	2119652-1	FEED CAM, PRE FEED	48
-	1	1	1	1	2079383-7	SCR, BHSC, RoHS (M8 X 25)	41
-	1	1	1	1	2119645-1	DISC, NUMBERED FA WIRE ADJUSTMENT	40
-	1	1	1	1	2119957-1	APPLICATOR SHIM PACK	39
-	1	1	1	1	2119644-1	RAM WASHER, PRECISION	38
-	1	1	1	1	1752356-4	SUPPORT, TERMINAL	34
-	2	2	2	2	2079383-5	SCR, BHSC, RoHS (M4 X 20)	33
-	1	1	1	1	2161328-1	HEX HEAD, FLANGED, M5 x 8mm LONG	32
-	1	1	1	1	1-1320908-2	SPACER, STRIP GUIDE	30
-	1	1	1	1	2119959-2	ASSEMBLY, STRIP GUIDE	29
-	1	1	1	1	455888-3	SPACER, CRIMPER	28
	-	1	1	1	1320928-2	STRIP GUIDE	24
	-	1	1	1	2119806-1	INSERT, SHEAR	13
-	1	1	1	1	3-22280-3	SPRING, COMPRESSION	12
	-	1	1	1	1-356885-4	STOP, SHEAR	11
	-	1	1	1	2119805-1	SHEAR HOLDER, FRONT	10
	-	1	1	1	318707-1	FLOATING SHEAR, FRONT	9
	1	1	1	1	1333204-1	ANVIL, COMBINATION	8
-	-	-	-	-	-	-	7
-	-	-	-	-	-	-	6
-	1	1	1	1	2119781-1	DEPRESSOR, SHEAR	5
-	1	1	1	1	238011-9	BLOCK, CRIMPER SPACER	4
	1	1	1	1	3-2119784-1	CRIMPER, INSULATION O PREMIUM	3
	-	1	1	1	1-455888-0	SPACER, CRIMPER	2
	1	1	1	1	1-456405-6	CRIMPER, WIRE PREMIUM	1
-77	-27	-25	-22	-21	PART NO	DESCRIPTION	ITEM NO

DIMENSIONS:		TOLERANCES UNLESS OTHERWISE SPECIFIED:		OWN		REV	
mm	0 PLC ±	1 PLC ±	2 PLC ±	3 PLC ±	4 PLC ±	DATE	BY
	ANGLES	FINISH		DATE	BY	DATE	BY
MATERIAL		WEIGHT		DATE	BY	DATE	BY

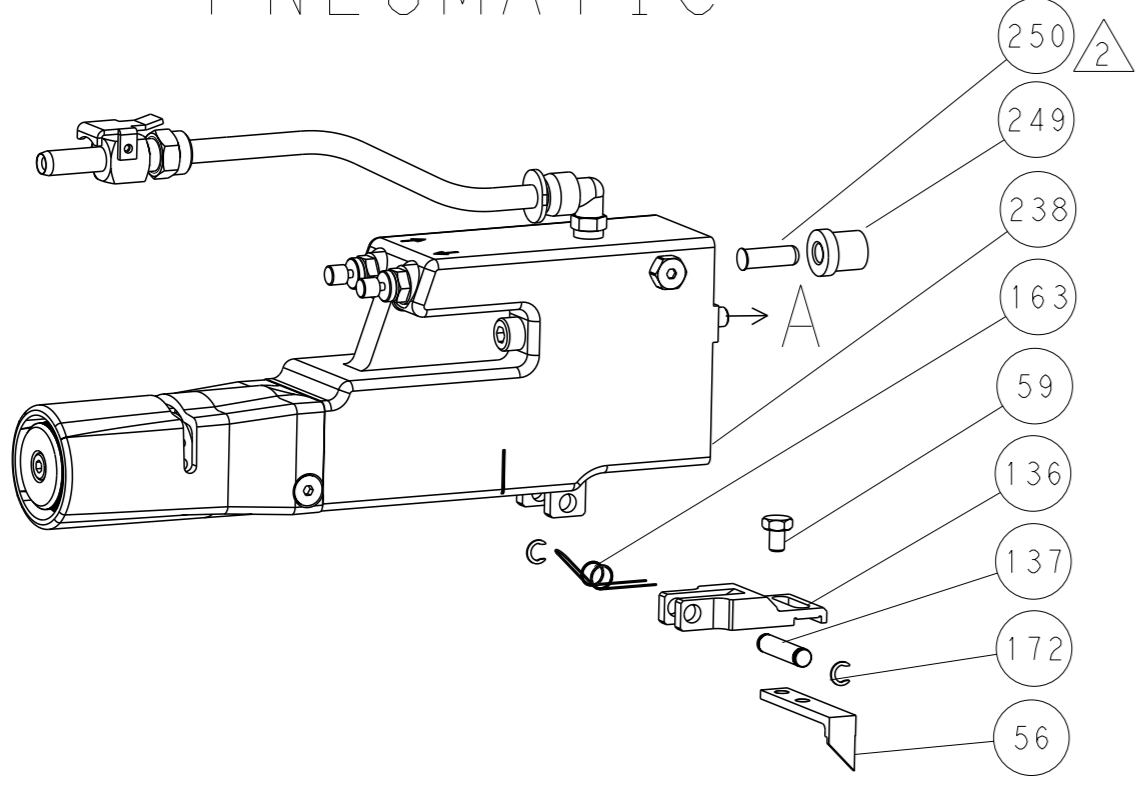
NAME	TE Connectivity
ADDRESS	Harrisburg, PA 17105-3608
PRODUCT SPEC	Ocean Side Feed Applicator
APPLICATION SPEC	
SIZE	00779
CAGE CODE	2266017
DRAWING NO	
RESTRICTED TO	
Customer Accessible Production Drawing	SCALE 1:2 SHEET 3 of 4 REV D1

LOC	DIST	REVISIONS			
A	66	REV	DATE	OWN	APVD
		1	SEE SHEET 1		

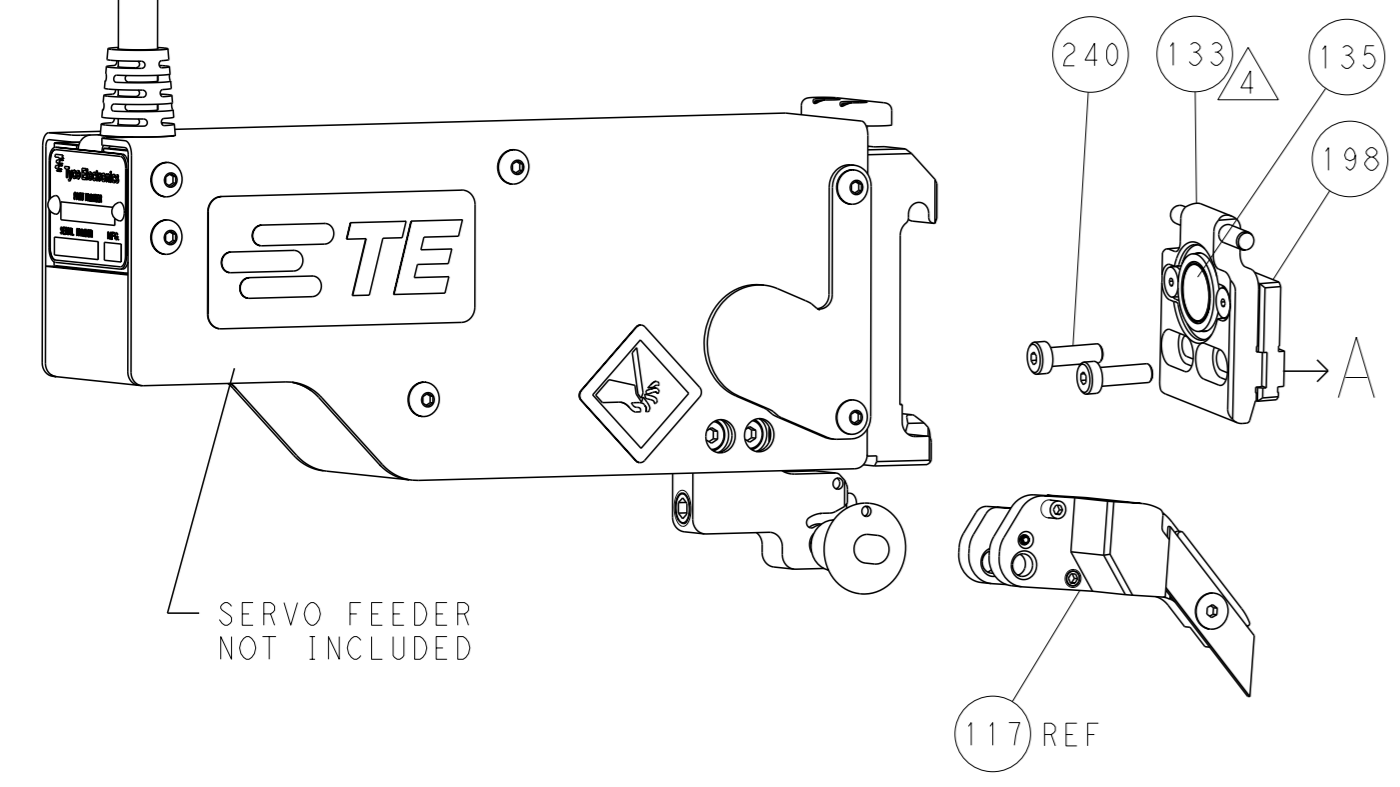
FEED TYPE MECHANICAL



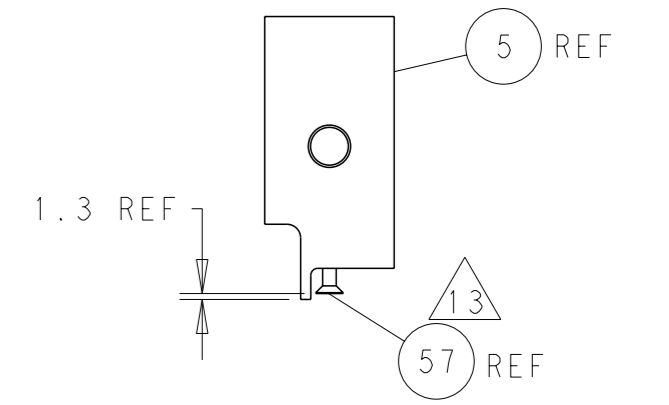
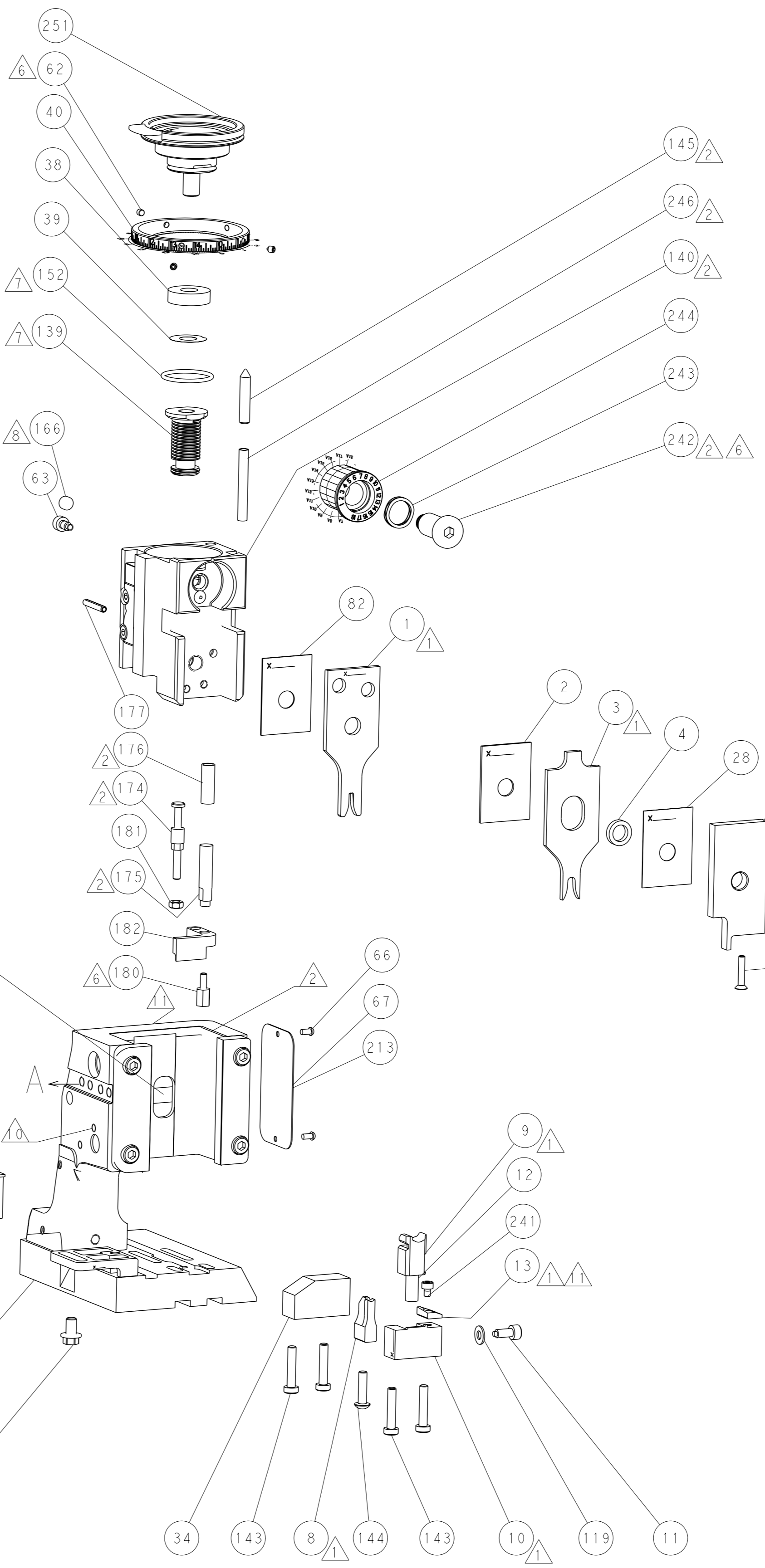
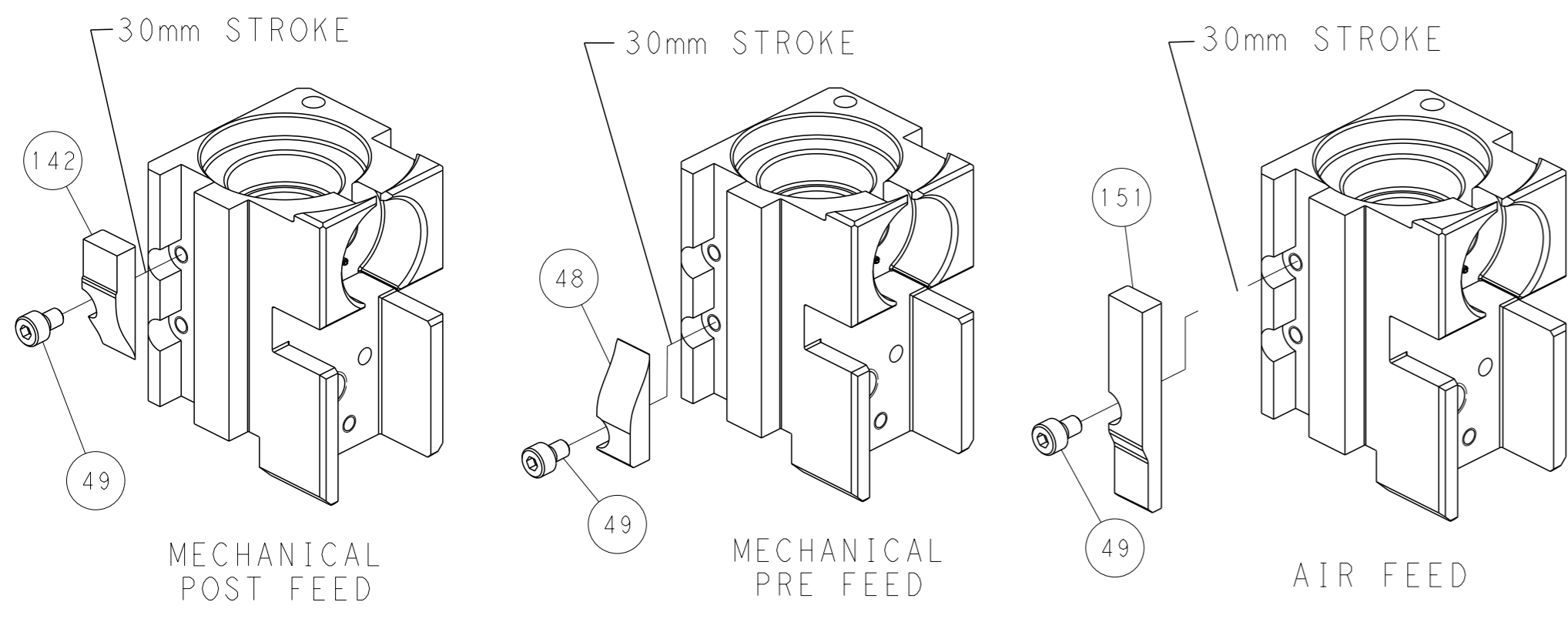
PNEUMATIC



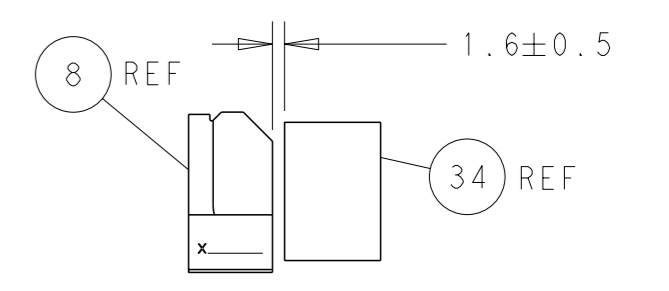
SERVO LATCH PLATE



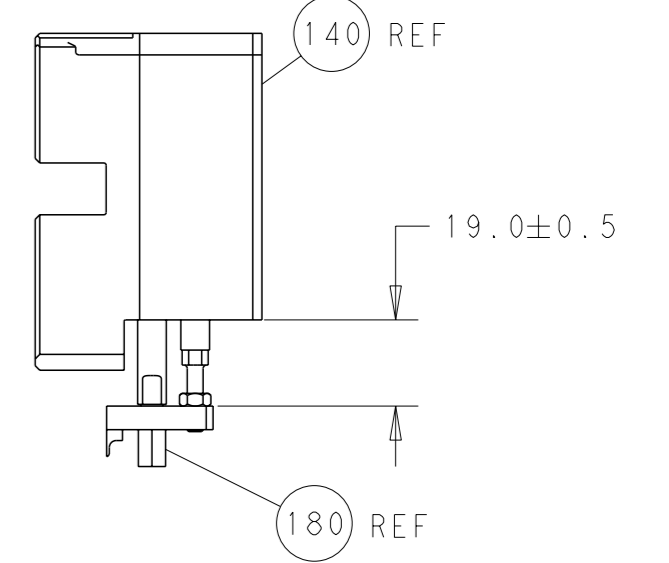
CAM POSITIONS



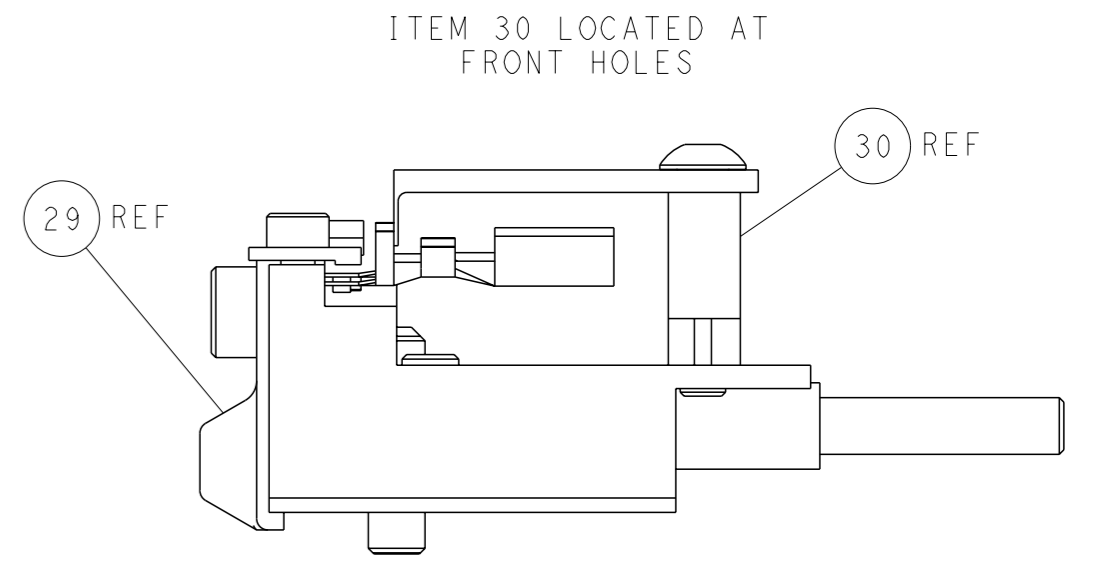
SHEAR DEPRESSOR DETAIL



TERMINAL SUPPORT LOCATION



HOLDDOWN SET-UP



FEED TRACK POSITION GUIDE BY INSULATION BARREL

PACIFIC VERSION
 Shown on sheets 3 of 4 & 4 of 4
 (Atlantic version shown on sheets 1 of 4 & 2 of 4)

<small>THIS DRAWING IS A CONTROLLED DOCUMENT FOR TYCO ELECTRONICS CORPORATION. IT IS SUBJECT TO CHANGE AND THE CONTROLLER ENGINEERING DEPARTMENT SHOULD BE CONTACTED FOR THE LATEST REVISION.</small>		DWN X_ZHAO 13AUG2013 CHK T_ELFIN 13AUG2013 APVD T_ELFIN 13AUG2013	TE Connectivity Harrisburg, PA 17105-3608
DIMENSIONS: mm 	TOLERANCES UNLESS OTHERWISE SPECIFIED: 0 PLC ± 1 PLC ± 2 PLC ± 3 PLC ± 4 PLC ± ANGLES FINISH ±	NAME Ocean Side Feed Applicator	SIZE CAGE CODE DRAWING NO A1 00779 C=2266017
MATERIAL	FINISH	WEIGHT	RESTRICTED TO
		Customer Accessible Production Drawing	SCALE 1:2 SHEET 4 OF 4 REV D1

Mouser Electronics

Authorized Distributor

Click to View Pricing, Inventory, Delivery & Lifecycle Information:

[TE Connectivity:](#)

[2266017-1](#)