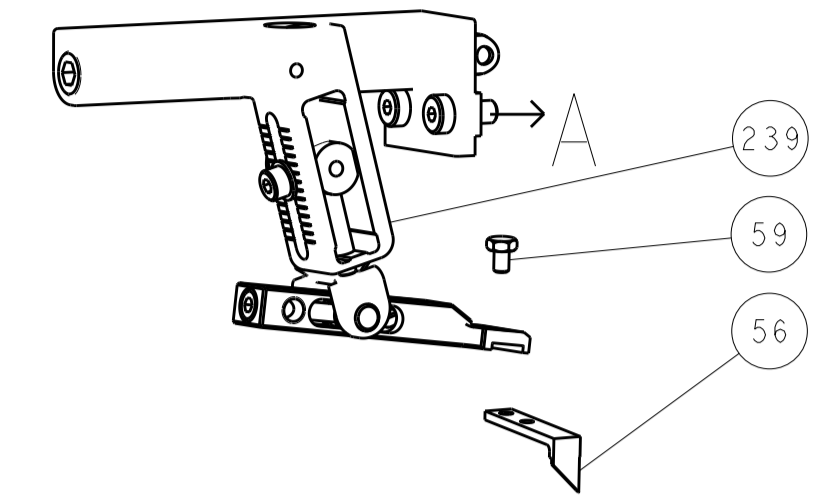


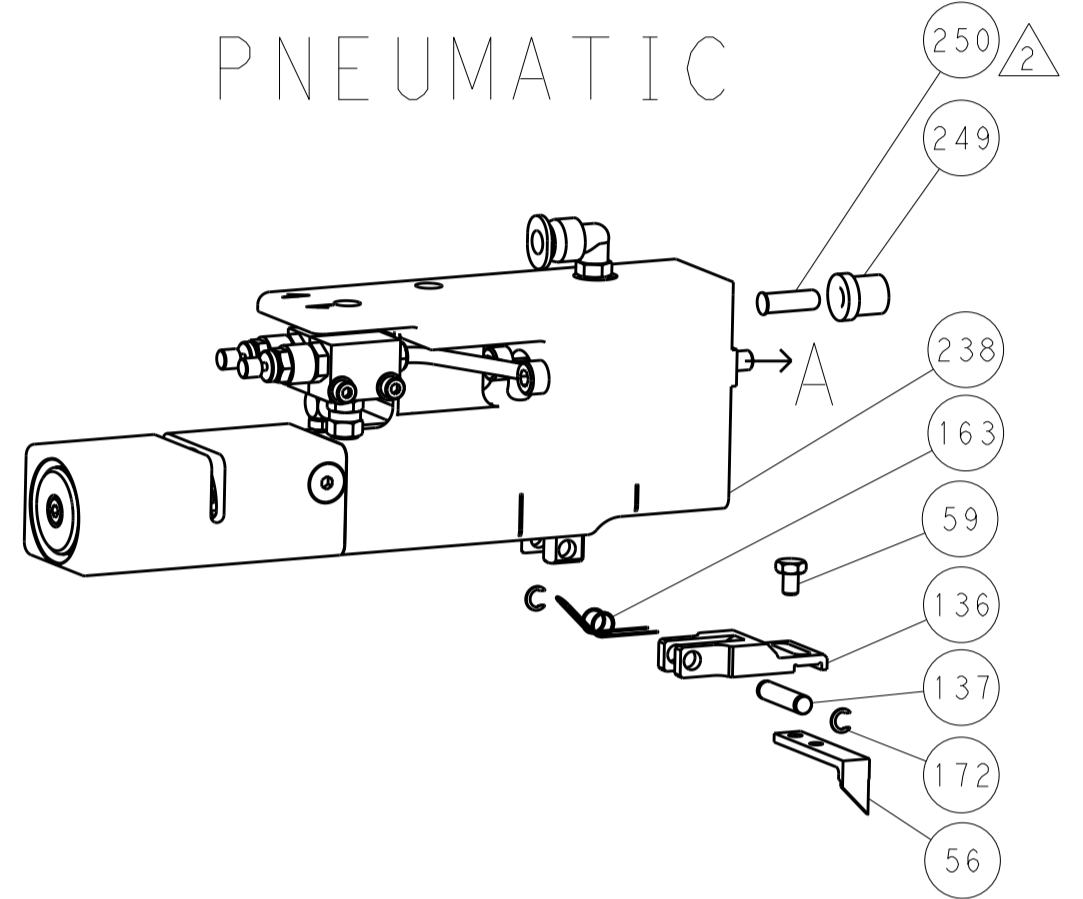


| LOC |    | DIST |     | REVISIONS   |      |     |      |  |
|-----|----|------|-----|-------------|------|-----|------|--|
| A   | 66 | P    | LTN | DESCRIPTION | DATE | OWN | APVD |  |
|     |    | -    |     | SEE SHEET 1 |      |     |      |  |

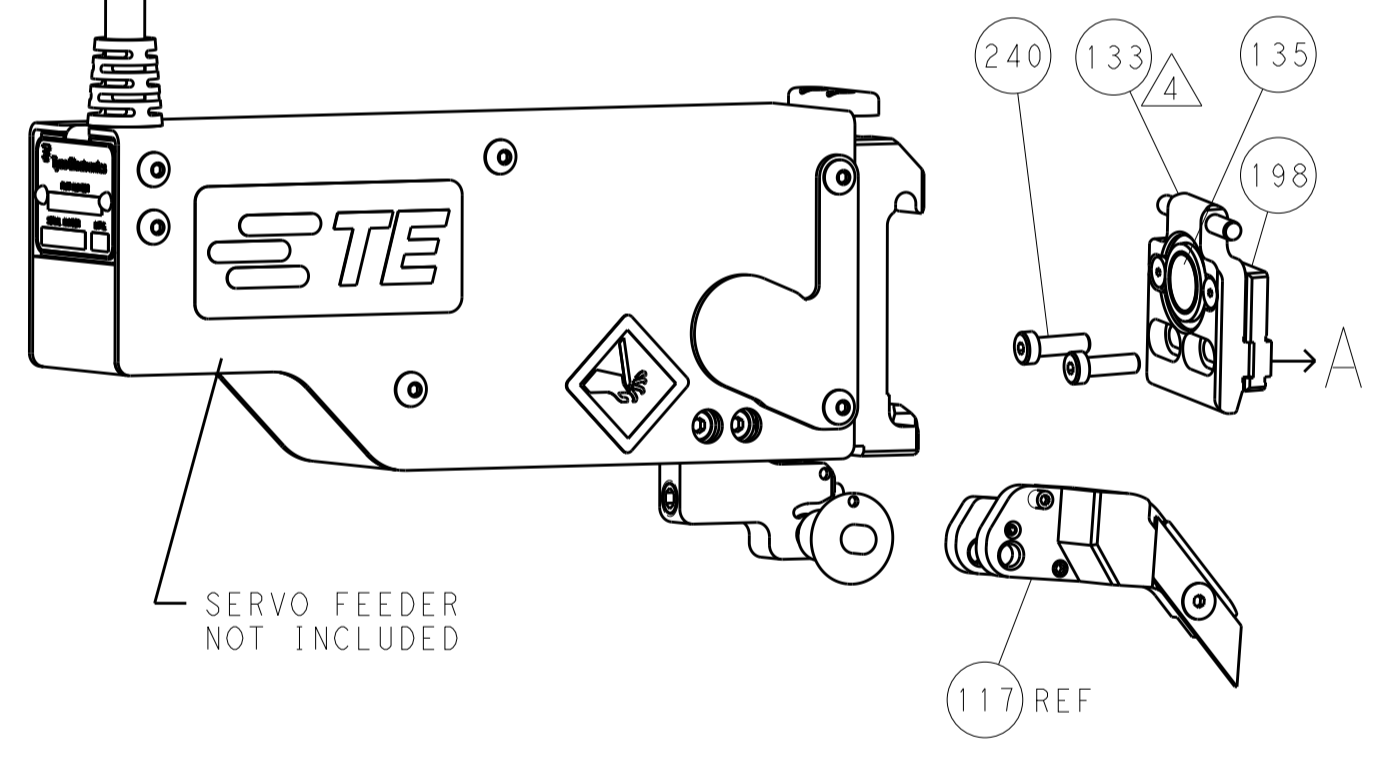
### FEED TYPE MECHANICAL



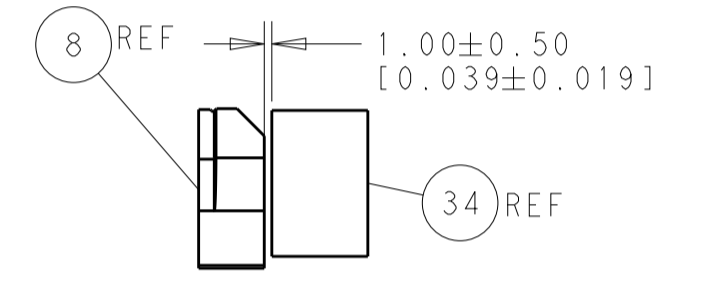
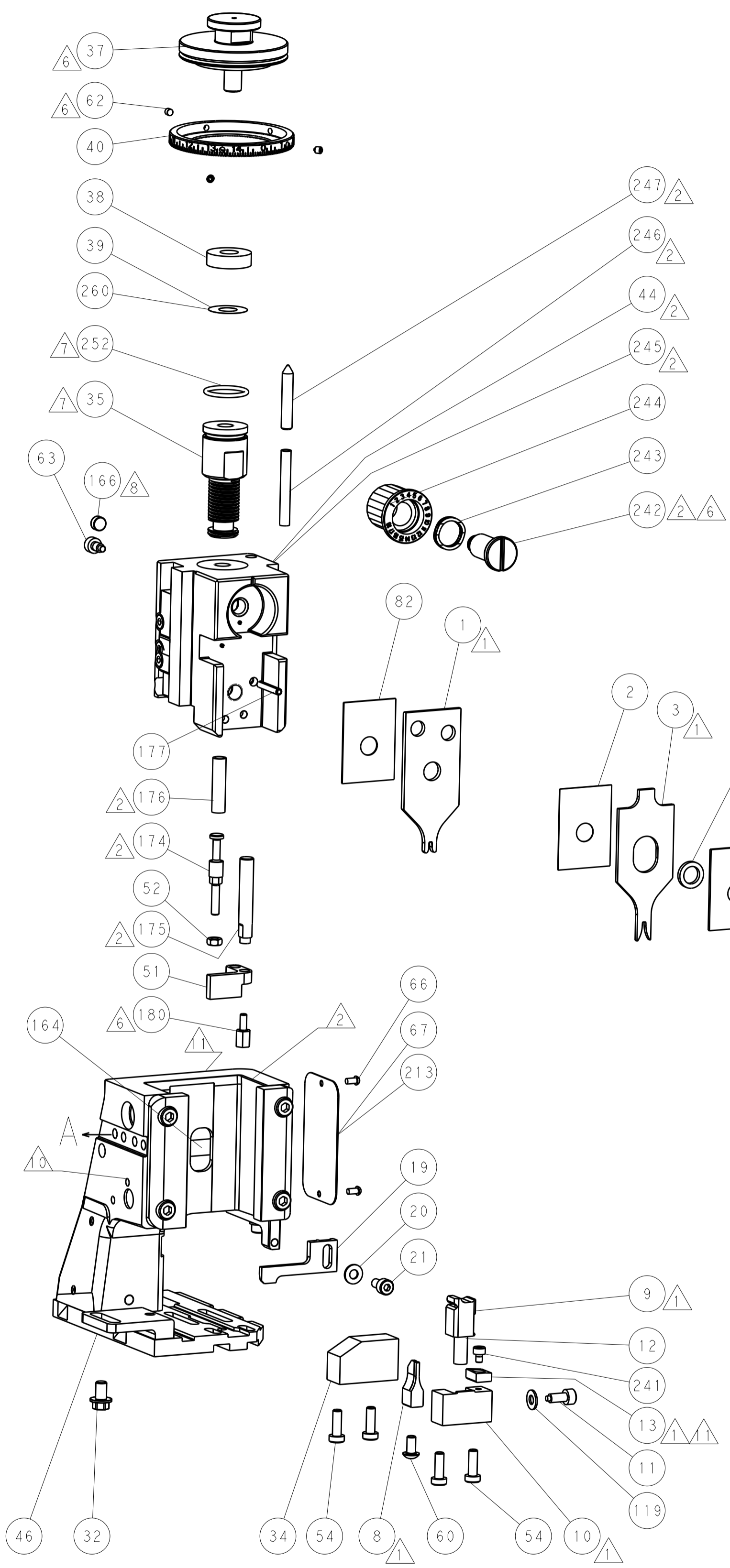
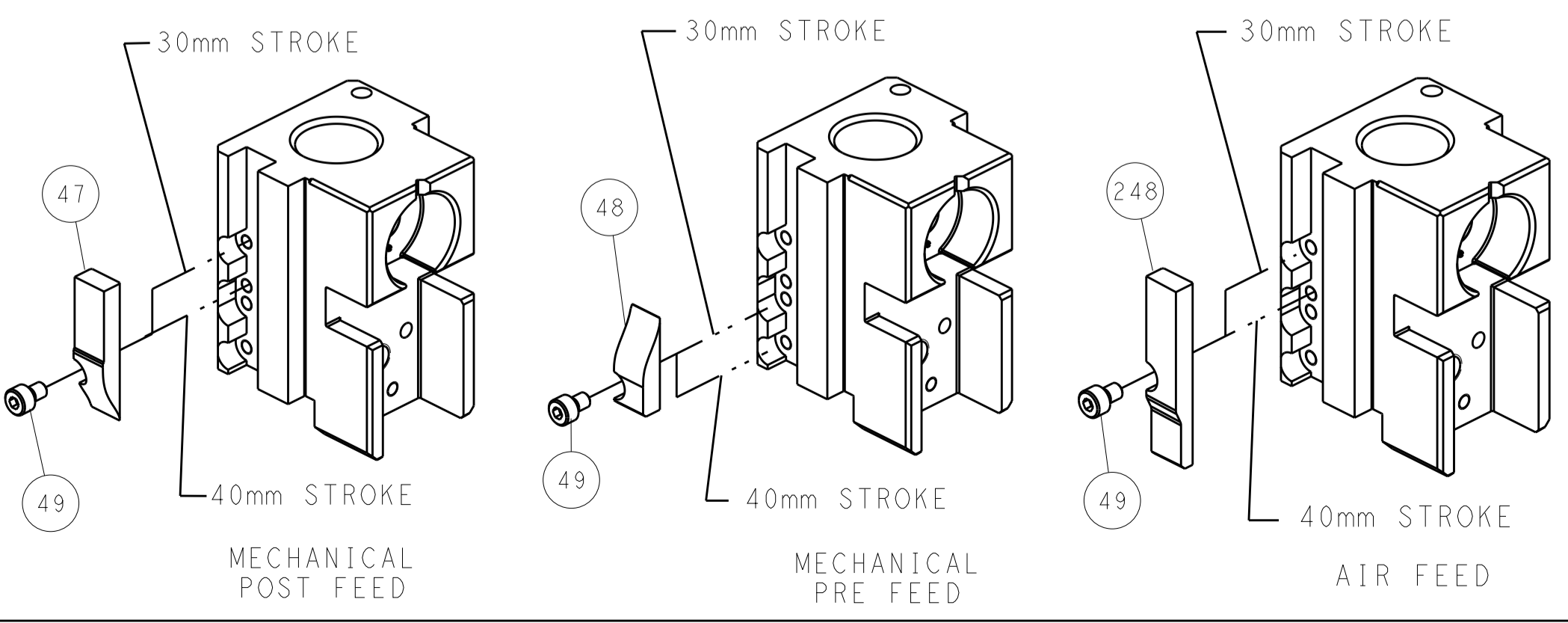
### PNEUMATIC



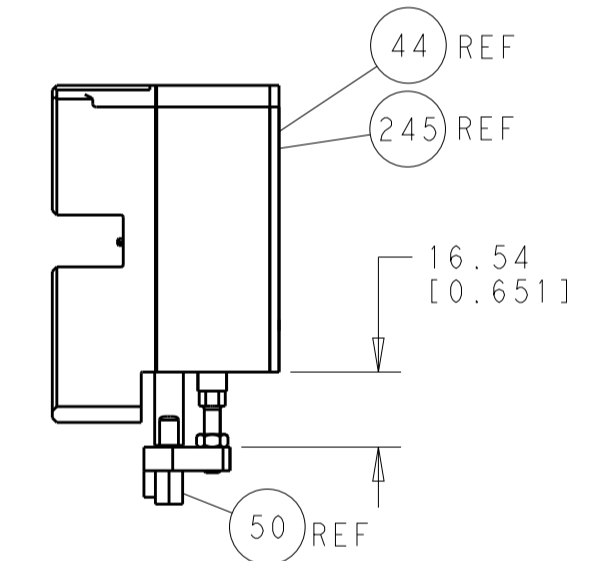
### SERVO LATCH PLATE



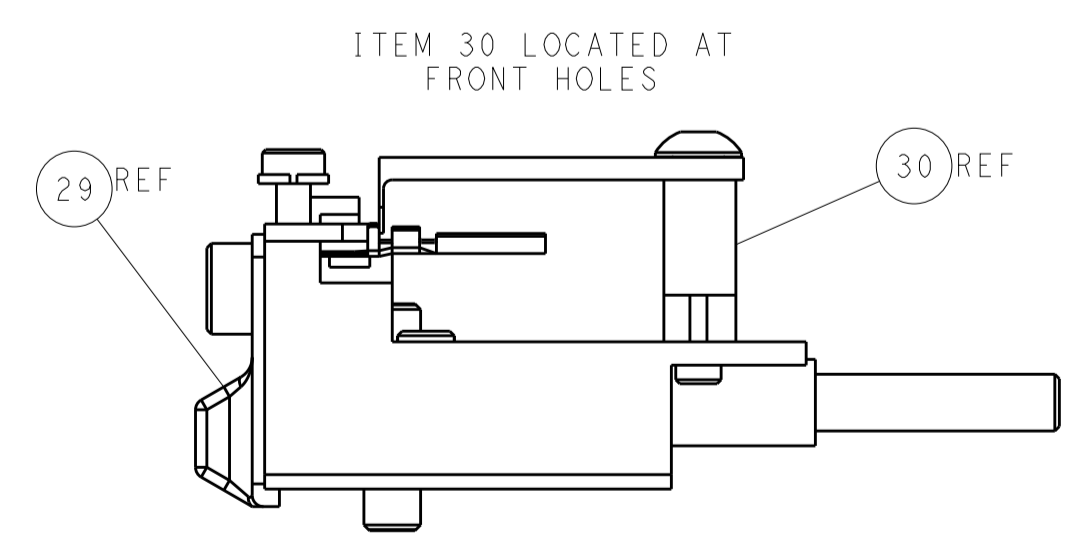
### CAM POSITIONS



TERMINAL SUPPORT LOCATION



HOLDDOWN SET-UP



FEED TRACK POSITION GUIDE BY INSULATION BARREL

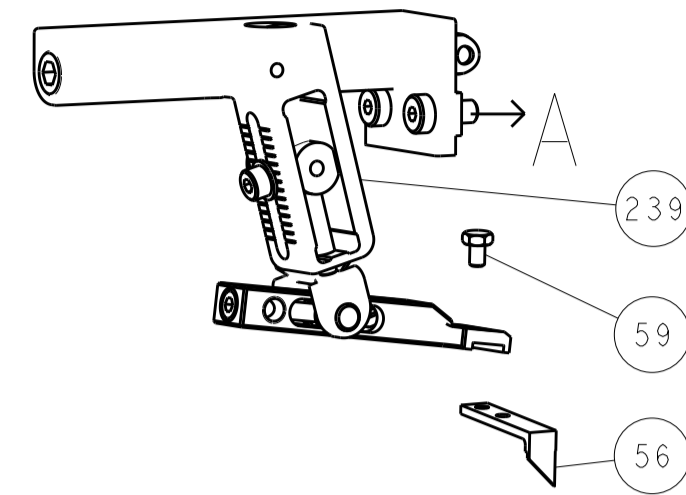
**ATLANTIC VERSION**  
 Shown on sheets 1 of 4 & 2 of 4  
 (Pacific version shown on sheets 3 of 4 & 4 of 4)

|  |            |  |             |                         |               |   |   |
|--|------------|--|-------------|-------------------------|---------------|---|---|
| DIMENSIONS:                            |            | TOLERANCES UNLESS OTHERWISE SPECIFIED: |             | DWN Y. YIN 20NOV2012    |               | TE Connectivity                         |   |
| mm                                     | 0 PLC ±0.1 | 1 PLC ±0.1                             | 2 PLC ±0.02 | 3 PLC ±0.005            | 4 PLC ±0.0005 | 5 ANGLES ±0.0005                        | TE Connectivity Harrisburg, PA 17105-3608 |
| MATERIAL:                              |            |  |             | CHK G. BAILEY 20NOV2012 |               | NAME Ocean Side Feed Applicator         |   |
| FINISH:                                |            |  |             | S. XI 20NOV2012         |               | PRODUCT SPEC                            |   |
| APVD:                                  |            |  |             | APVD:                   |               | APPLICATION SPEC                        |   |
| WEIGHT:                                |            |  |             | A1 00779                |               | SIZE CAGE CODE DRAWING NO RESTRICTED TO |   |
| Customer Accessible Production Drawing |            |  |             | SCALE 1:1               |               | SHEET 2 OF 4 REV A                      |   |

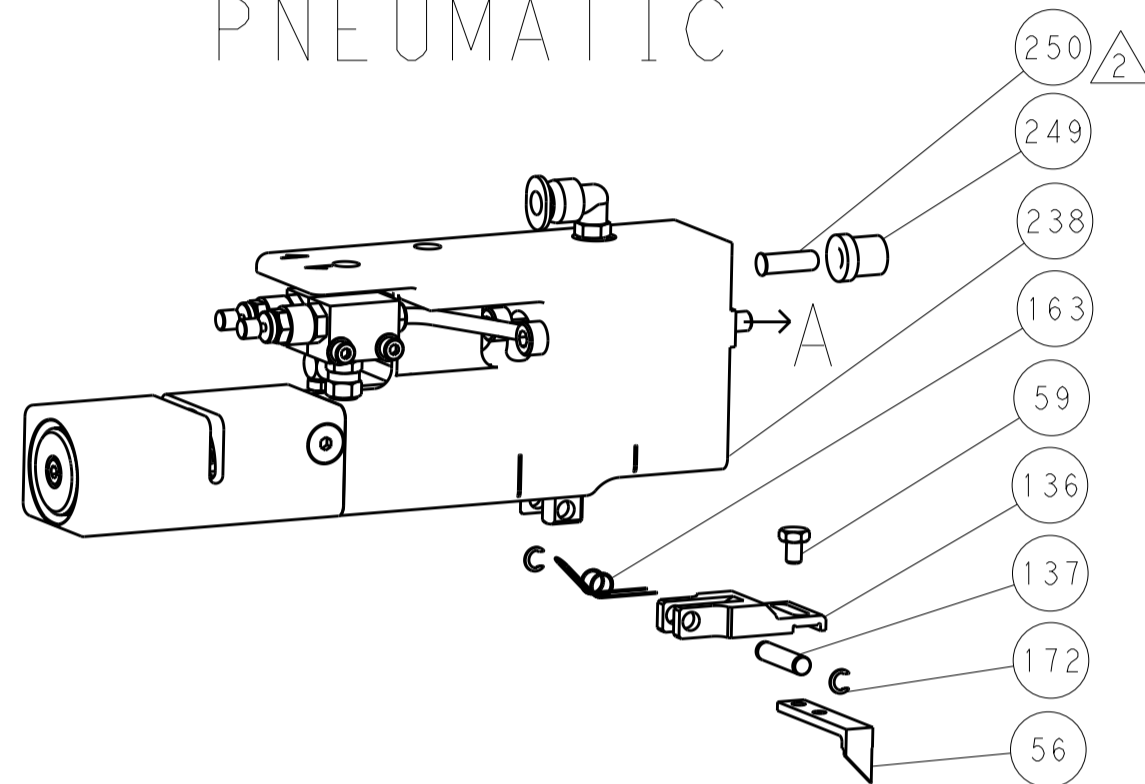


| LOC |    | DIST |     | REVISIONS   |      |     |      |
|-----|----|------|-----|-------------|------|-----|------|
| A   | 66 | P    | LTM | DESCRIPTION | DATE | DWN | APVD |
|     |    | -    |     | SEE SHEET 1 |      |     |      |

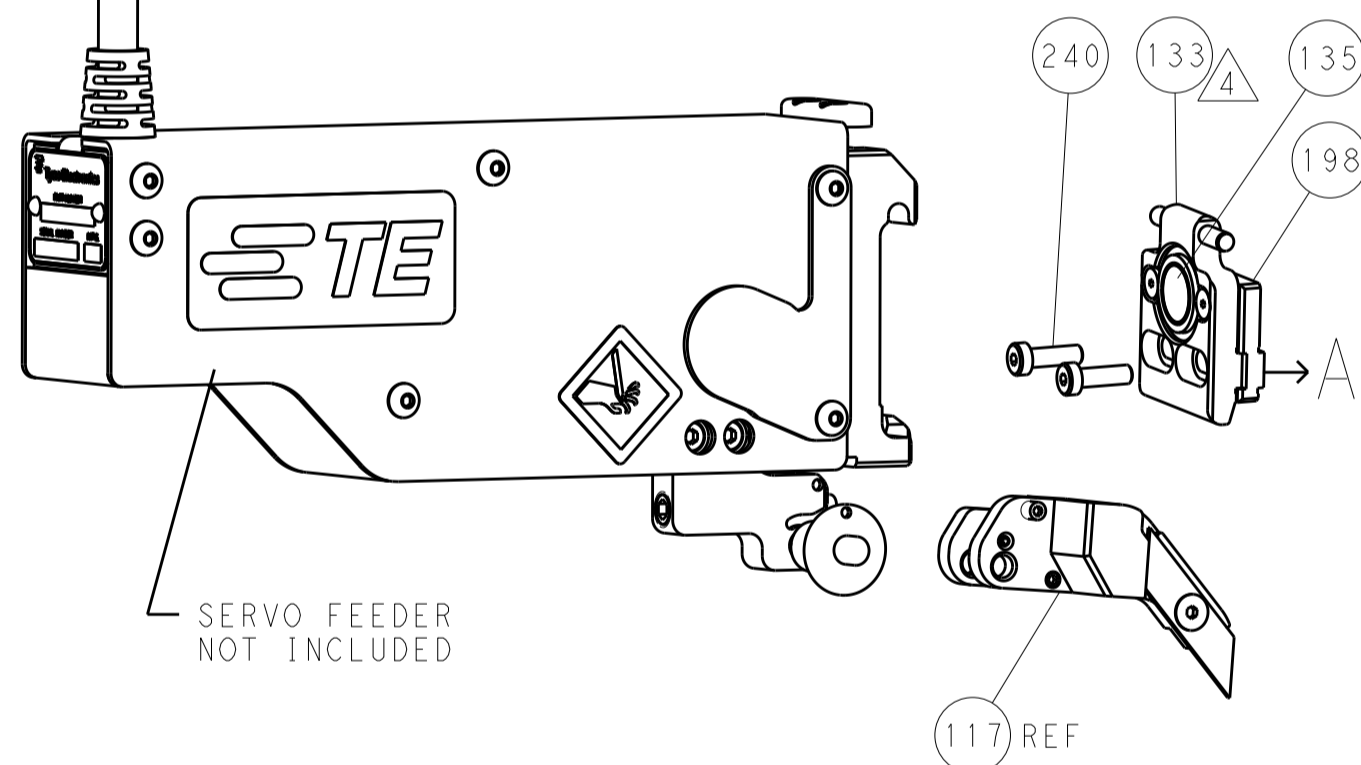
# FEED TYPE MECHANICAL



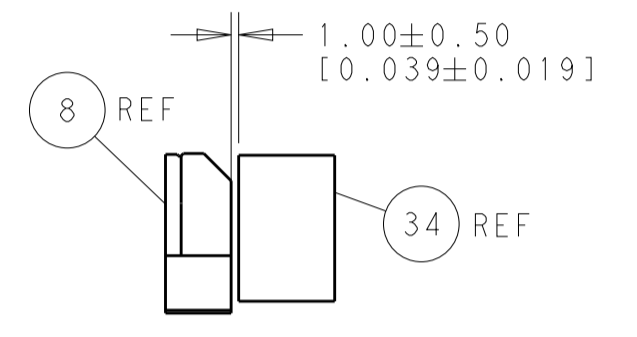
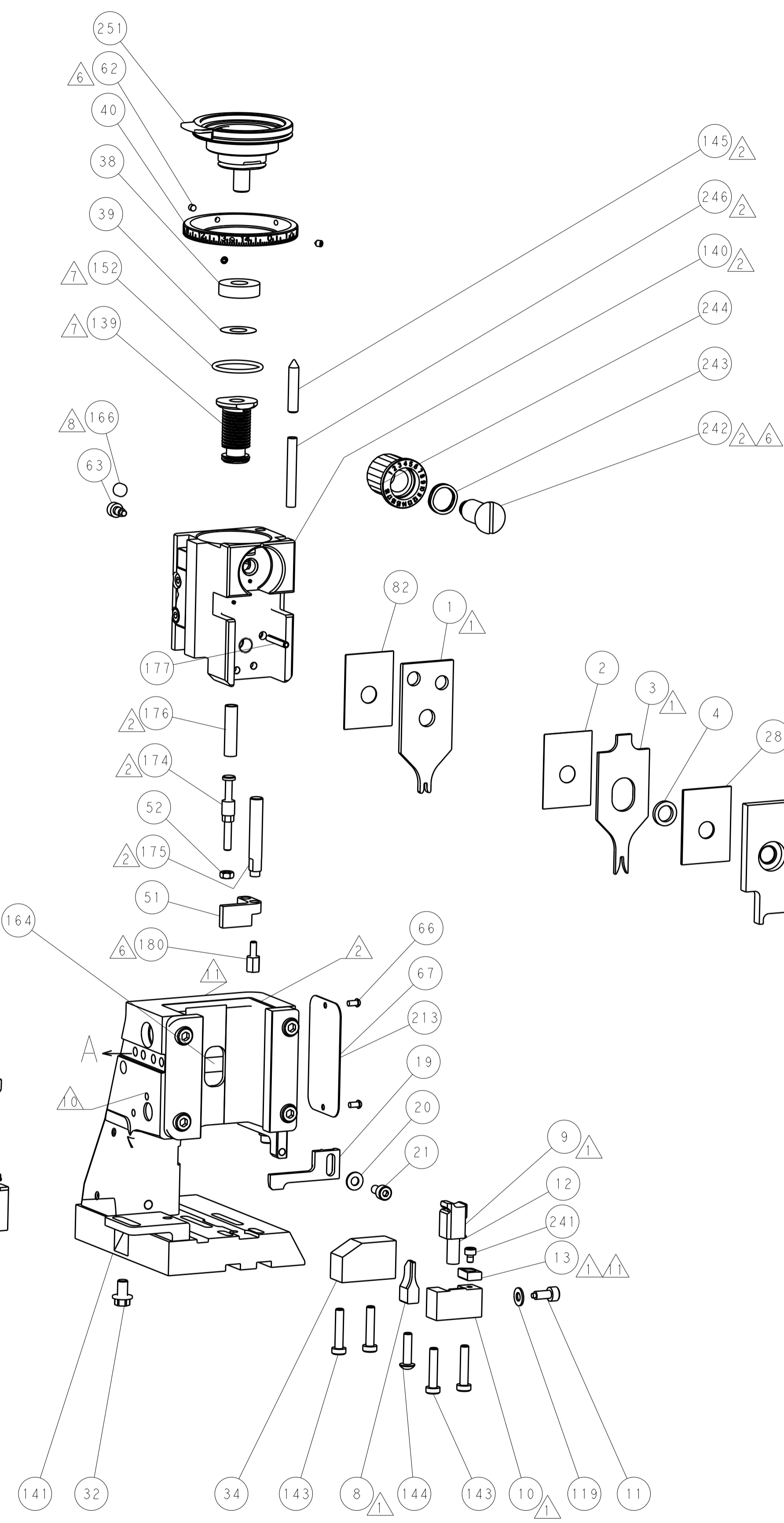
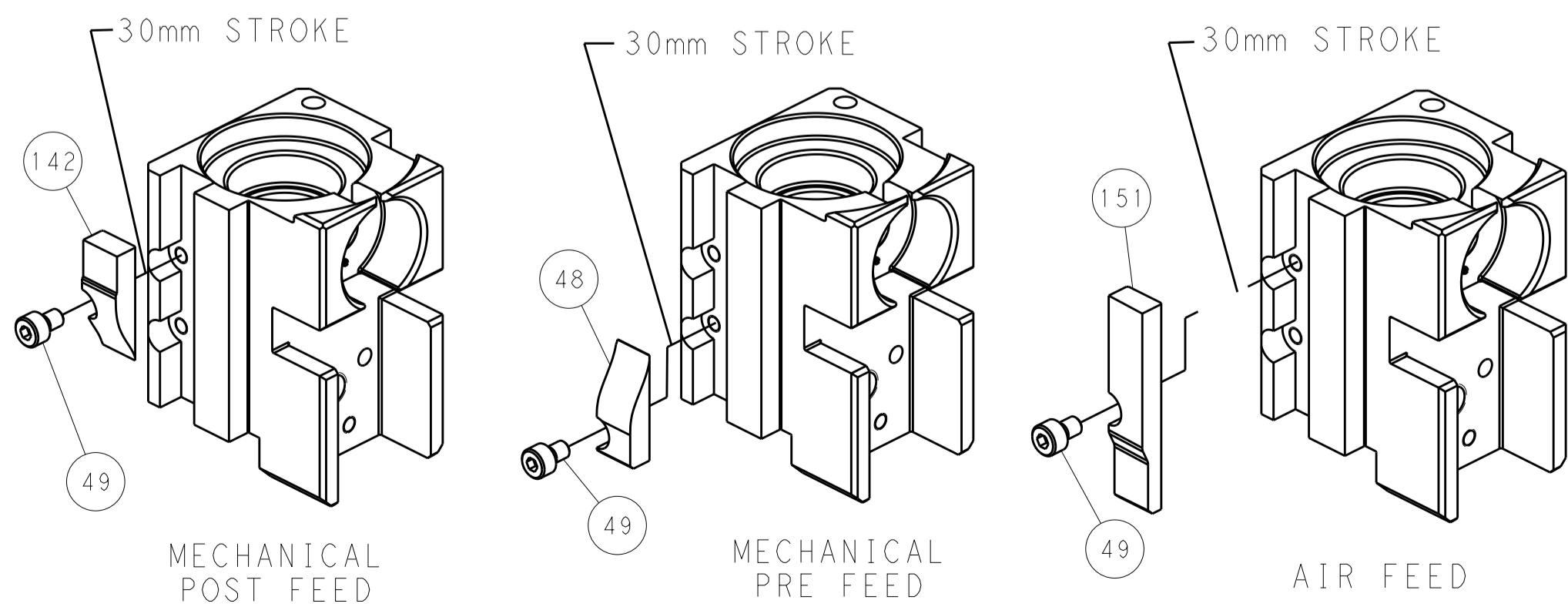
# PNEUMATIC



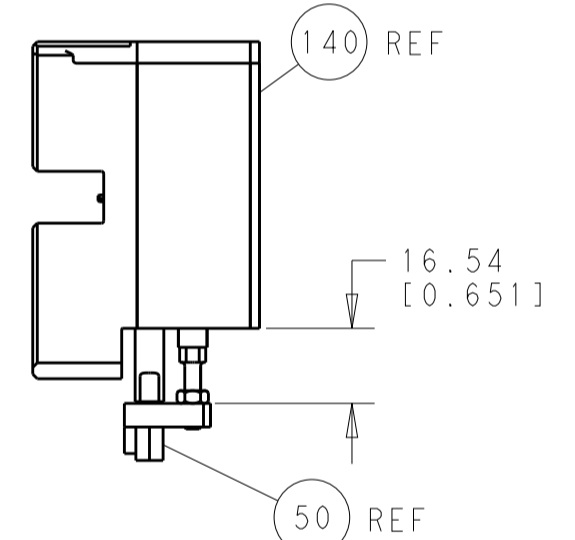
# SERVO LATCH PLATE



# CAM POSITIONS

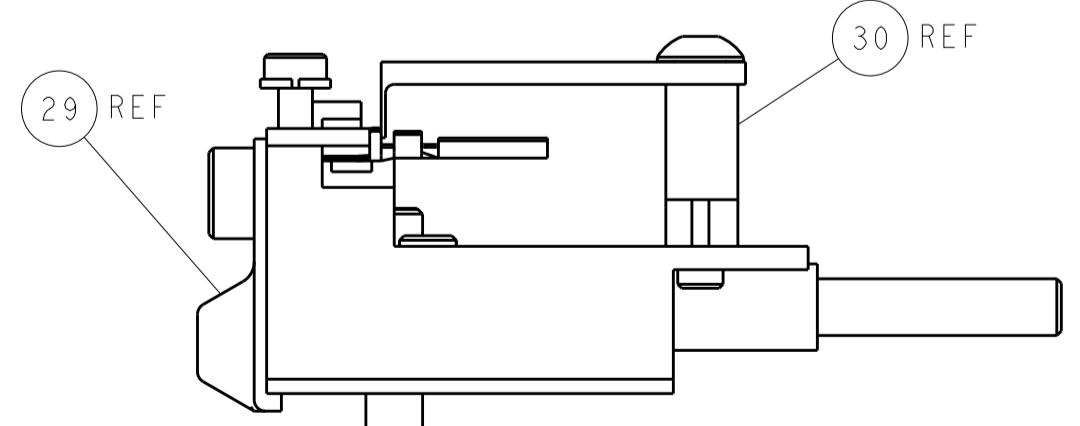


TERMINAL SUPPORT LOCATION



HOLDDOWN SET-UP

ITEM 30 LOCATED AT FRONT HOLES



FEED TRACK POSITION GUIDE BY INSULATION BARREL

**PACIFIC VERSION**  
 Shown on sheets 3 of 4 & 4 of 4  
 (Atlantic version shown on sheets 1 of 4 & 2 of 4)

|  |            |  |             |                                 |               |                      |                           |
|--|------------|--|-------------|---------------------------------|---------------|----------------------|---------------------------|
| DIMENSIONS:                            |            | TOLERANCES UNLESS OTHERWISE SPECIFIED: |             | DWN Y. YIN 20NOV2012            |               | TE Connectivity      |                           |
| mm                                     | 0 PLC ±0.1 | 1 PLC ±0.1                             | 2 PLC ±0.02 | 3 PLC ±0.005                    | 4 PLC ±0.0005 | APVD S. XI 20NOV2012 | Harrisburg, PA 17105-3608 |
| MATERIAL:                              |            | FINISH:                                |             | NAME Ocean Side Feed Applicator |               | RESTRICTED TO        |                           |
| Customer Accessible Production Drawing |            | SCALE 1:1                              |             | SHEET 4 OF 4                    |               | REV A                |                           |

# Mouser Electronics

Authorized Distributor

Click to View Pricing, Inventory, Delivery & Lifecycle Information:

[TE Connectivity:](#)

[7-2151801-7](#)