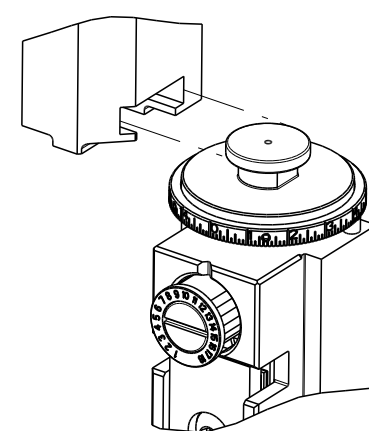


| PART NUMBER | REVISION | DESCRIPTION | FEED TYPE |
|-------------|----------|---------------------------------|-----------|
| 2150321-2 | C | FINE CRIMP HEIGHT ADJUST | PNEUMATIC |
| 7-2150321-2 | C | PNEUMATIC AND CRIMP TOOLING KIT | PNEUMATIC |
| 7-2150321-7 | A | CRIMP TOOLING KIT | - |

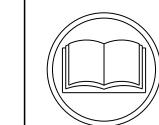
ATLANTIC VERSION TERMINATOR INTERFACE ADAPTER



| APPLICATOR DATA | | |
|--------------------------------------|----------------|------|
| CRIMP | SIZE | TYPE |
| WIRE | 4.57 mm [.180] | F |
| INSUL | 7.62 mm [.300] | F |
| APPLICATOR INSTRUCTIONS 408-35043 | | |

| TERMINAL DATA: TE TERMINAL | | TE CRIMP SPECIFICATION | |
|---|-------------|------------------------------|-------------|
| TERMINAL NAME: .375 SERIES FASTIN-FASTON RECEPTACLE | | | |
| WIRE STRIP LENGTH | | INSULATION DIAMETER RANGE | |
| 6.22-6.99 mm [.245-.275 IN] | | ∅5.08-6.99 mm [.200-.275 IN] | |
| TERMINAL APPLICATION SPECIFICATION | 114-20021 | - | - |
| TERMINALS APPLIED | | | |
| TE TERMINAL | TE TERMINAL | TE TERMINAL | TE TERMINAL |
| 280755-2 | 280755-4 | 281091-2 | |

| WIRE SIZE | CRIMP HEIGHT mm [INCH] | CRIMP HEIGHT REFERENCE SETTING |
|--------------------|----------------------------|--------------------------------|
| 10.00mm2 | 3.63+/-0.05 [.143+/- .002] | 4.9 |
| 6.0+2.5 or 8.50mm2 | 3.51+/-0.05 [.138+/- .002] | 6.3 |
| 8.00mm2 | 3.43+/-0.05 [.135+/- .002] | 7.4 |
| 6.00mm2 | 3.23+/-0.05 [.127+/- .002] | 8.6 |



- RECOMMENDED SPARE PARTS
- REFER TO SUPPLIED INSTRUCTION SHEET FOR CLEANING, LUBRICATION AND STORAGE OF APPLICATOR.
- APPLY PART NUMBER 2-23419-6 LOCTITE TO THREADS OF ITEM 242. APPLY PART NUMBER 1-23419-5 LOCTITE TO THREADS OF ITEM 50.
- CRIMP HEIGHT REFERENCE SETTING WAS THE SETTING USED WHEN THE APPLICATOR WAS QUALIFIED AT THE FACTORY. ADJUSTMENT MAY BE NECESSARY WHEN RUNNING APPLICATOR IN THE FIELD.
- TERMINAL PITCH NOT COMPATIBLE WITH MECHANICAL FEED.
- 6. UNLESS SPECIFIED OTHERWISE TORQUE VALUES SHALL BE USED PER DOCUMENT, 101-35000.

***WARNING**
ON INSTALLATION, SET WIRE DISC TO CRIMP HEIGHT REFERENCE SETTING FOR LARGEST WIRE SIZE. CRIMP HEIGHT REFERENCE SETTINGS GREATER THAN THE VALUE SHOWN MAY CAUSE DAMAGE TO THE CRIMP TOOLING. REFER TO THE INSTRUCTION SHEET FOR PROPER SETUP AND ADJUSTMENTS.

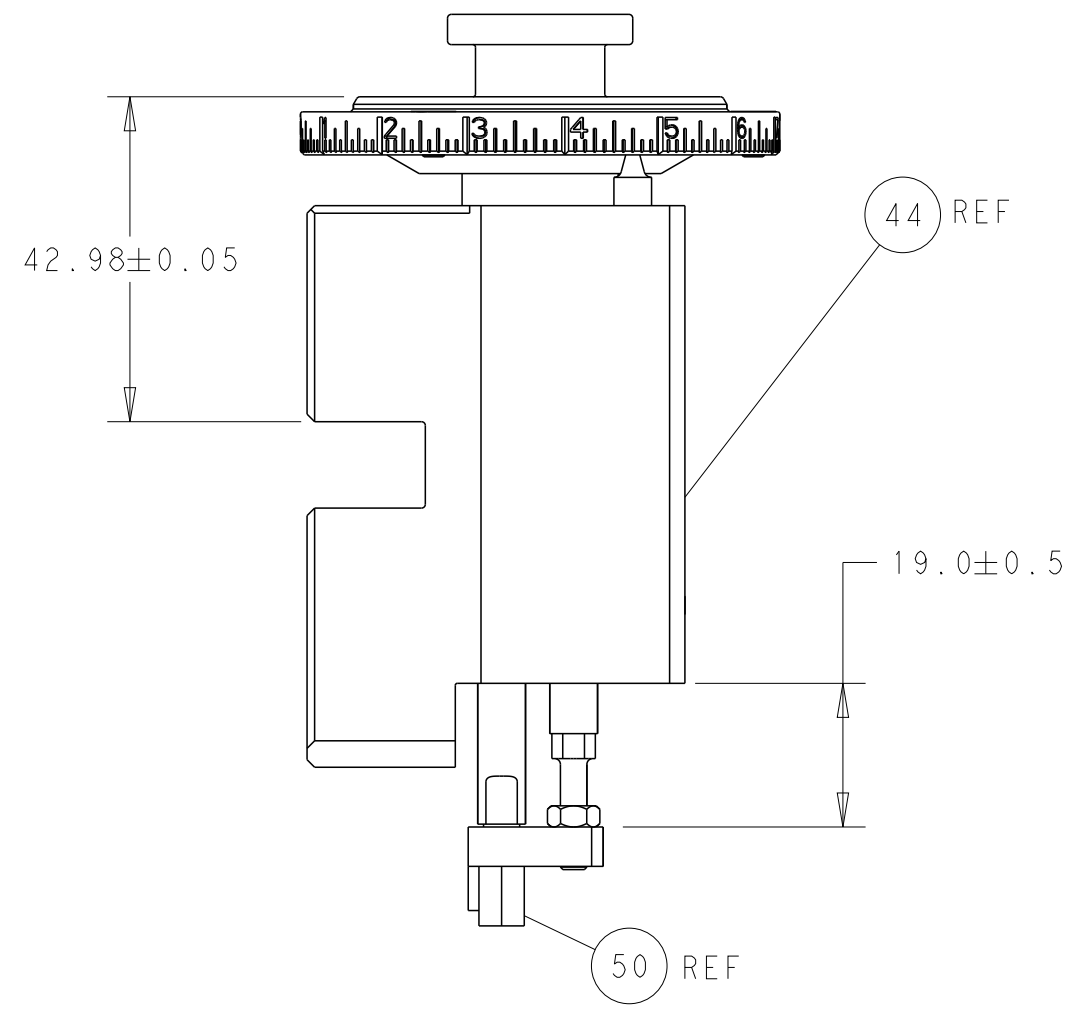
| LOC | DIST | REVISIONS | | | | | |
|-----|------|-----------|-----|---------------|-----------|-----|------|
| A | 66 | P | LTN | DESCRIPTION | DATE | DWN | APVD |
| | | A | | RELEASED | 30APR2013 | RK | GB |
| | | B | | ECR-17-005419 | 13APR2017 | TB | TE |
| | | C | | ECR-18-017030 | 28OC12018 | TB | CT |

| | | | | | | |
|---|-----|-----|-------------|-------------------------------------|-------------------------------|---------|
| - | 1 | 1 | 2119640-1 | PUSH ROD, AIR FEED | 250 | |
| - | 1 | 1 | 1803259-1 | BUSHING, FLANGED | 249 | |
| - | 1 | 1 | 2119641-1 | FEED CAM, AIR FEED | 248 | |
| - | 1 | 1 | 2119082-9 | CAM, SNAIL, INSULATION ADJUSTMENT | 244 | |
| - | 1 | 1 | 2079764-1 | WASHER, WAVE SPRING, CREST-TO-CREST | 243 | |
| | - | 1 | 2119083-1 | RETAINER, INSULATION DIAL | 242 | |
| - | 1 | 1 | 2063440-2 | AIR FEED MODULE | 238 | |
| - | 1 | 1 | 1-18028-0 | WASHER, FLAT, REG M8 | 192 | |
| - | 1 | 1 | 6-993111-6 | PIN, SLOTTED SPRING 3.0 X 14.0 | 177 | |
| - | 1 | 1 | 8-22280-7 | SPRING, COMPRESSION | 176 | |
| - | 1 | 1 | 1752353-2 | GUIDE PIN,HOLDDOWN | 175 | |
| - | 1 | 1 | 1901680-2 | GUIDE PIN,HOLDDOWN | 174 | |
| - | 2 | 2 | 21045-3 | RING, RETAIN, EXTERN, 3/16 CRESCENT | 172 | |
| - | REF | REF | 994970-2 | COUNTER, MAGNETIC | 164 | |
| - | 1 | 1 | 240638-1 | SPRING, FEED FINGER | 163 | |
| - | 1 | 1 | 3-23627-7 | PIN, RETAIN, GRVD, 3/16 X .854 | 137 | |
| - | 1 | 1 | 455888-6 | SPACER, CRIMPER | 82 | |
| - | 1 | 1 | 2119791-5 | DEPRESSOR, WIRE | 73 | |
| - | 1 | 1 | 1803607-2 | DOCUMENTATION PACKAGE | 71 | |
| - | 2 | 2 | 2-18032-2 | SCR, SET, FLT PNT, M3 X 10.0 | 70 | |
| - | 1 | 1 | 2119943-1 | WASHER, SPACER | 69 | |
| - | 1 | 1 | 2119740-1 | TAG, IDENTIFICATION | 67 | |
| - | 2 | 2 | 2168078-1 | SCREW, DRIVE, RH, RoHS, 2 x .188 | 66 | |
| - | 1 | 1 | 1901681-9 | HOLDDOWN, TERMINAL | 65 | |
| - | 2 | 2 | 2168400-8 | SHCS, LOW HEAD, RoHS, M4 X 16 | 64 | |
| - | 1 | 1 | 2168083-2 | SCR, SKT HD CAP, RoHS, M4 X 8.0 | 60 | |
| - | 3 | 3 | 2168400-4 | SHCS, LOW HEAD, RoHS, M4 X 8 | 57 | |
| - | 2 | 2 | 2168083-8 | SCR, SKT HD CAP, RoHS, M4 X 16 | 56 | |
| - | 2 | 2 | 5018030-1 | NUT, HEX, REG, RoHS, M3 | 54 | |
| - | 2 | 2 | 986965-8 | NUT, LOCK, HEX, TORQUE (M4) | 53 | |
| - | 1 | 1 | 1-5018030-0 | NUT, HEX, REG, RoHS, M3.5 | 52 | |
| - | 1 | 1 | 2119792-2 | PAWL, EF, AIR | 51 | |
| | - | 1 | 1-1752354-6 | STANDOFF,HOLD-DOWN | 50 | |
| - | 1 | 1 | 18023-9 | SCR, SKT HD CAP M4 X 6.0 | 49 | |
| - | 1 | 1 | 2119655-5 | APPLICATOR BASIC ASSEMBLY, EF | 46 | |
| - | 1 | 1 | 1803517-1 | RAM ASSEMBLY, EF ATLANTIC | 44 | |
| - | 1 | 1 | 1803602-1 | SCR, BHSC, RoHS (M8 X 25) | 41 | |
| - | 7 | 7 | 1-18028-2 | WASHER, FLAT, REG M4 | 33 | |
| - | 2 | 2 | 2168083-9 | SCR, SKT HD CAP, RoHS, M4 X 20 | 31 | |
| - | 2 | 2 | 2168083-2 | SCR, SKT HD CAP, RoHS, M4 X 8.0 | 29 | |
| - | 1 | 1 | 690455-1 | STRIPPER, FRONT CASTING | 27 | |
| - | 2 | 2 | 1-2168083-5 | SCR, SKT HD CAP, RoHS, M4 X 30 | 25 | |
| - | 1 | 1 | 1-1752371-4 | PLATE, STRIP GUIDE | 24 | |
| - | 1 | 1 | 240825-5 | PLATE, STRIP HOLD DOWN | 23 | |
| - | 2 | 2 | 22281-7 | SPRING, COMPRESSION | 22 | |
| - | 1 | 1 | 1803292-4 | DRAG | 20 | |
| - | 2 | 2 | 1901259-7 | GUIDE, LOWER STRIP | 18 | |
| - | 4 | 4 | 1-2079383-1 | SCR, BHSC, RoHS (M6 X 12) | 17 | |
| - | 1 | 1 | 4-240641-7 | SPACER | 16 | |
| - | 1 | 1 | 1752360-1 | SPACER,HOLD-DOWN | 13 | |
| | - | 1 | 1-240833-3 | PLATE, REAR SHEAR | 11 | |
| - | - | - | - | - | 10 | |
| | - | 1 | 1 | 5-690482-4 | PLATE, FRONT SHEAR | 9 |
| | 1 | 2 | 1 | 1333223-3 | ANVIL, COMBINATION | 8 |
| | - | 1 | 1 | 2217206-4 | BLADE, SLUG | 7 |
| - | - | - | - | - | 6 | |
| - | 1 | 1 | 1-240641-6 | SPACER | 5 | |
| - | 1 | 1 | 3-238011-1 | BLOCK, CRIMPER SPACER | 4 | |
| | 1 | 2 | 1 | 2-1633961-2 | CRIMPER, INSULATION F PREMIUM | 3 |
| - | 1 | 1 | 1-455888-2 | SPACER, CRIMPER | 2 | |
| | 1 | 2 | 1 | 456428-3 | CRIMPER, WIRE | 1 |
| - | 77 | 72 | -2 | PART NO | DESCRIPTION | ITEM NO |

ATLANTIC VERSION
Shown on sheets 1 of 4 & 2 of 4
(Pacific version shown on sheets 3 of 4 & 4 of 4)

| DIMENSIONS: | | TOLERANCES UNLESS OTHERWISE SPECIFIED: | | DRAWING NO | | RESTRICTED TO | |
|--|---------|--|---------|------------|---------|---------------|----------|
| mm | 0 PLC ± | 1 PLC ± | 2 PLC ± | 3 PLC ± | 4 PLC ± | ANGLES ± | FINISH ± |
| MATERIAL | | | | WEIGHT | SCALE | SHEET | REV |
| Customer Accessible Production Drawing | | | | A1 | 00779 | 2150321 | C |

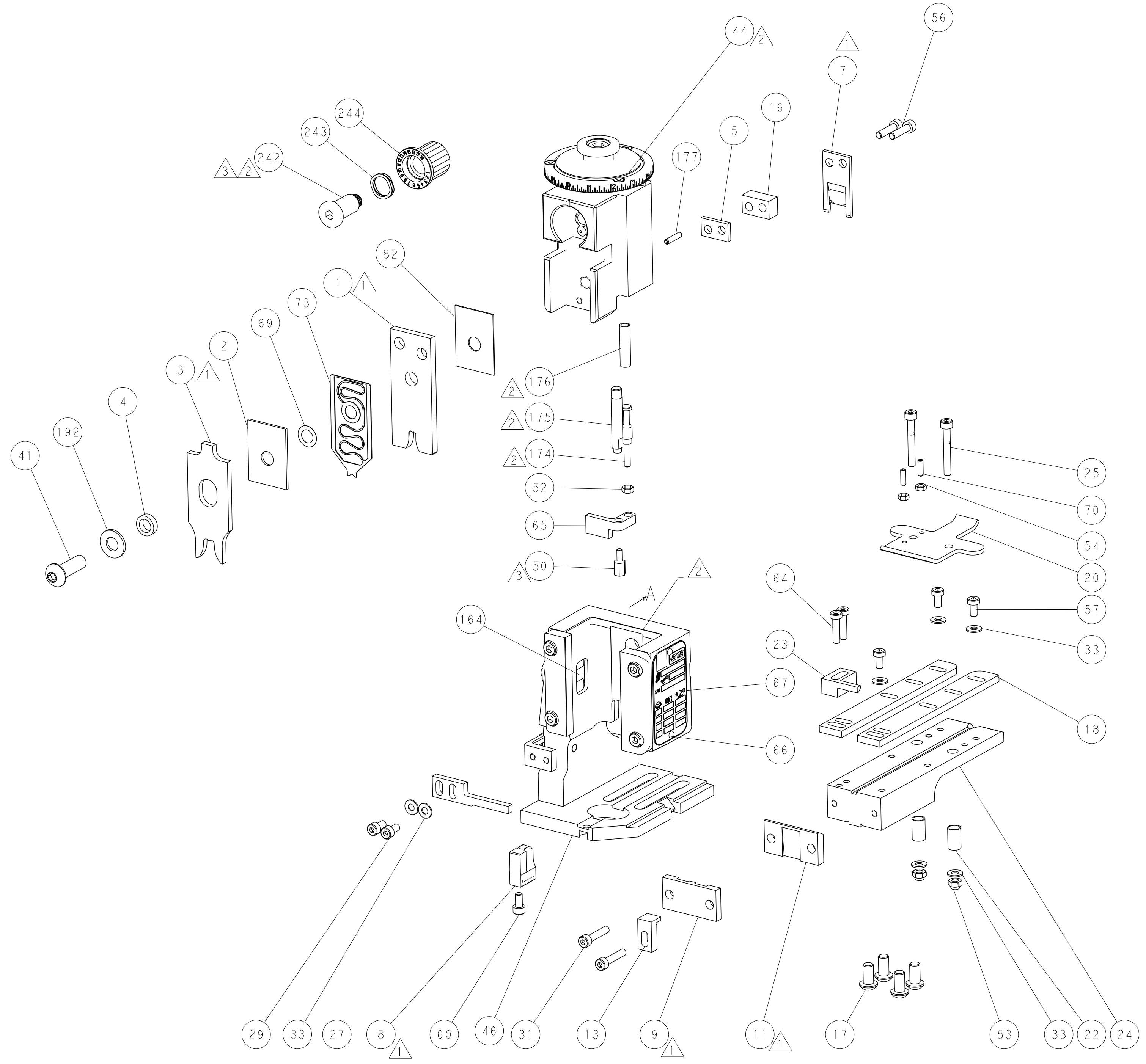
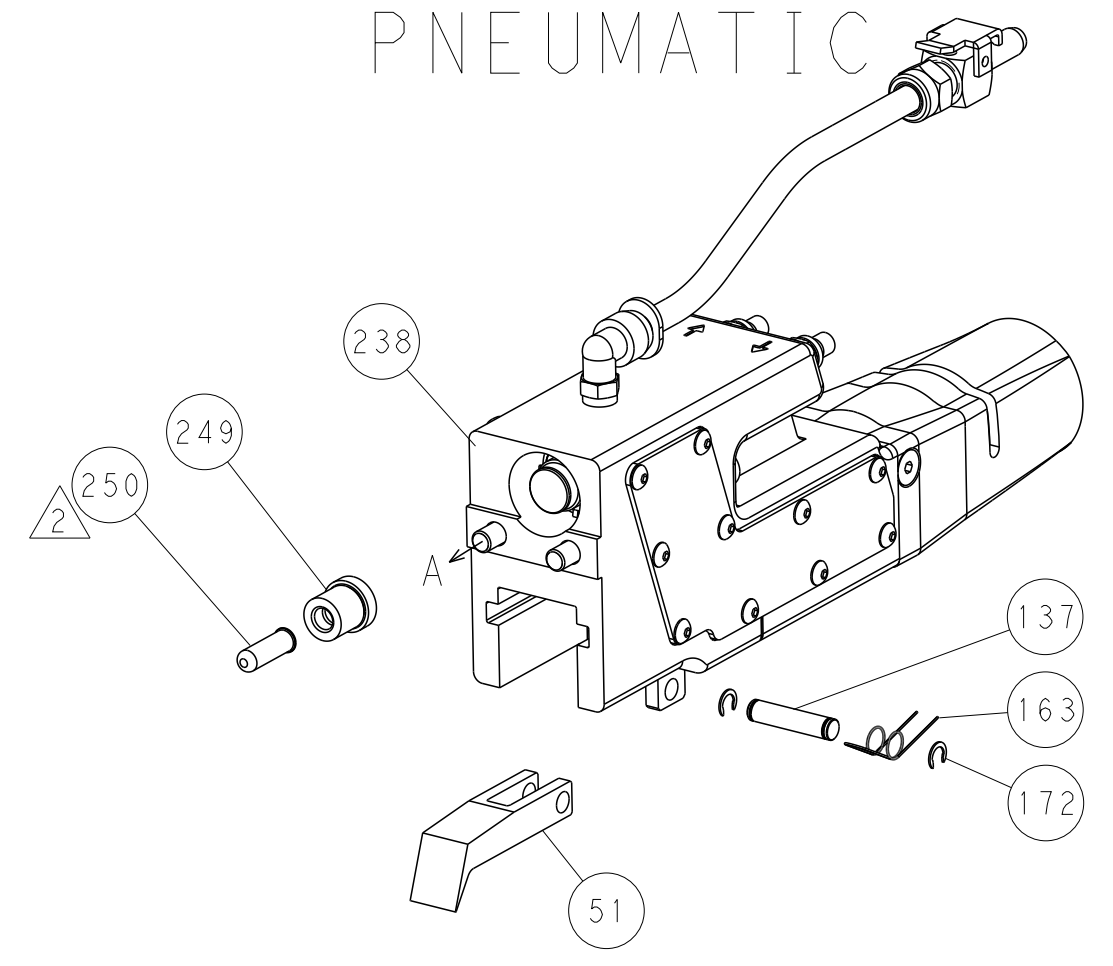
| LOC | DIST | REVISIONS | | | |
|-----|------|-------------|------|-----|------|
| P | LTN | DESCRIPTION | DATE | DWN | APVD |
| A | 66 | SEE SHEET 1 | - | - | - |



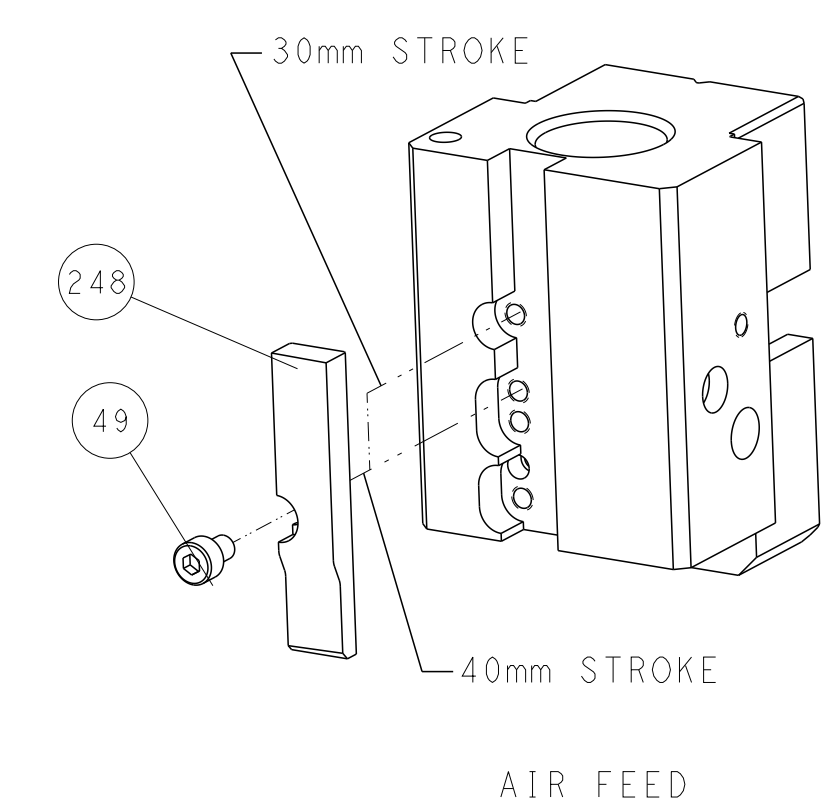
RAM AND HOLD DOWN SET-UP

FEED TYPE

PNEUMATIC



CAM POSITION

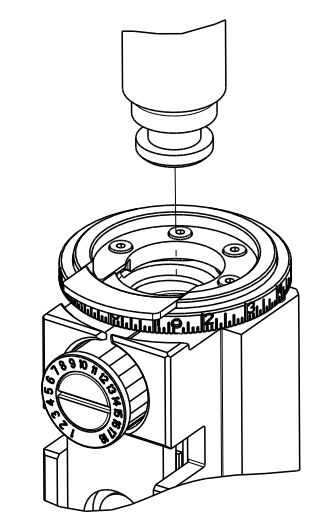


ATLANTIC VERSION
 Shown on sheets 1 of 4 & 2 of 4
 (Pacific version shown on sheets 3 of 4 & 4 of 4)

| | | | |
|---|--|--|---|
| <small>THIS DRAWING IS UNPUBLISHED. RELEASED FOR PUBLICATION BY TYCO ELECTRONICS CORPORATION. ALL RIGHTS RESERVED.</small> | | DWN: K. HUANG 25MAR2013 CHK: L. ZHANG 25MAR2013 APVD: J. GUO 25MAR2013 | TE Connectivity Harrisburg, PA 17105-3608 |
| DIMENSIONS: mm TOLERANCES UNLESS OTHERWISE SPECIFIED: 0 PLC ± 1 PLC ± 2 PLC ± 3 PLC ± 4 PLC ± ANGLES ± FINISH ± | | NAME: Ocean End Feed Applicator PRODUCT SPEC: - APPLICATION SPEC: - SIZE: A1 CAGE CODE: 00779 DRAWING NO: C=2150321 | RESTRICTED TO: - SCALE: 1:1 SHEET: 2 of 4 REV: C |
| MATERIAL: - FINISH: - | | WEIGHT: - Customer Accessible Production Drawing | SHEETS 3 & 4 ARE NOT REQUIRED FOR ATLANTIC VERSION |

| PART NUMBER | REVISION | DESCRIPTION | FEED TYPE |
|-------------|----------|--------------------------|-----------|
| 2-2150321-2 | C | FINE CRIMP HEIGHT ADJUST | PNEUMATIC |
| 7-2150321-7 | A | CRIMP TOOLING KIT | - |

PACIFIC VERSION TERMINATOR
 INTERFACE ADAPTER



APPLICATOR DATA

| CRIMP | SIZE | TYPE |
|-------|------------------|------|
| WIRE | 4.57 mm [.180] | F |
| INSUL | 7.62 mm [.300] | F |

APPLICATOR INSTRUCTIONS
 408-35043

TERMINAL DATA: TE TERMINAL TE CRIMP SPECIFICATION

TERMINAL NAME: .375 SERIES FASTIN-FASTON RECEPTACLE

| WIRE STRIP LENGTH | INSULATION DIAMETER RANGE |
|-------------------------------|--------------------------------|
| 6.22-6.99 mm [.245-.275 IN] | ∅5.08-6.99 mm [.200-.275 IN] |

TERMINAL APPLICATION SPECIFICATION

| TE TERMINAL | TE TERMINAL | TE TERMINAL | TE TERMINAL |
|-------------|-------------|-------------|-------------|
| 280755-2 | 280755-4 | 281091-2 | |

| WIRE SIZE | CRIMP HEIGHT mm [INCH] | CRIMP HEIGHT REFERENCE SETTING |
|--------------------|---------------------------------|--------------------------------|
| 10.00mm2 | 3.63 +/- 0.05 [.143 +/- .002] | 4.9 |
| 6.0+2.5 or 8.50mm2 | 3.51 +/- 0.05 [.138 +/- .002] | 6.3 |
| 8.00mm2 | 3.43 +/- 0.05 [.135 +/- .002] | 7.4 |
| 6.00mm2 | 3.23 +/- 0.05 [.127 +/- .002] | 8.6 |

- RECOMMENDED SPARE PARTS
- REFER TO SUPPLIED INSTRUCTION SHEET FOR CLEANING, LUBRICATION AND STORAGE OF APPLICATOR.
- APPLY PART NUMBER 2-23419-6 LOCTITE TO THREADS OF ITEM 242. APPLY PART NUMBER 1-23419-5 LOCTITE TO THREADS OF ITEM 50.
- CRIMP HEIGHT REFERENCE SETTING WAS THE SETTING USED WHEN THE APPLICATOR WAS QUALIFIED AT THE FACTORY. ADJUSTMENT MAY BE NECESSARY WHEN RUNNING APPLICATOR IN THE FIELD.
- TERMINAL PITCH NOT COMPATIBLE WITH MECHANICAL FEED.
- UNLESS SPECIFIED OTHERWISE TORQUE VALUES SHALL BE USED PER DOCUMENT, 101-35000.

***WARNING**
 ON INSTALLATION, SET WIRE DISC TO CRIMP HEIGHT REFERENCE SETTING FOR LARGEST WIRE SIZE. CRIMP HEIGHT REFERENCE SETTINGS GREATER THAN THE VALUE SHOWN MAY CAUSE DAMAGE TO THE CRIMP TOOLING. REFER TO THE INSTRUCTION SHEET FOR PROPER SETUP AND ADJUSTMENTS.

PACIFIC VERSION
 Shown on sheets 3 of 4 & 4 of 4
 (Atlantic version shown on sheets 1 of 4 & 2 of 4)

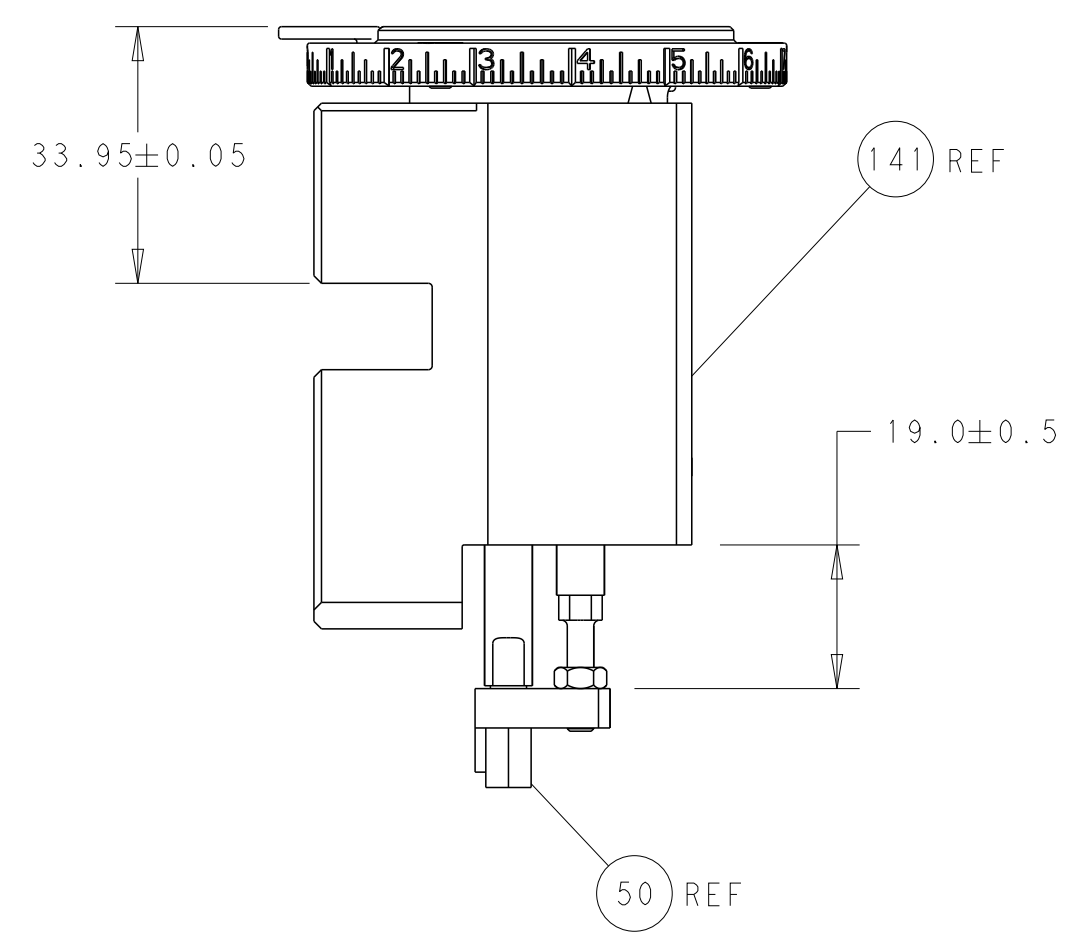
| LOC | DIST | REV | DATE | BY | APPV |
|-----|------|-----|------|----|------|
| A | 66 | | | | |

| REV | DATE | DESCRIPTION | DATE | BY | APPV |
|-----|------|-------------|------|----|------|
| - | 1 | 2119640-1 | | | 250 |
| - | 1 | 1803259-1 | | | 249 |
| - | 1 | 2119082-9 | | | 244 |
| - | 1 | 2079764-1 | | | 243 |
| - | 1 | 2119083-1 | | | 242 |
| - | 1 | 2063440-2 | | | 238 |
| - | 1 | 1-18028-0 | | | 192 |
| - | 4 | 2079383-9 | | | 186 |
| - | 1 | 6-993111-6 | | | 177 |
| - | 1 | 8-22280-7 | | | 176 |
| - | 1 | 1752353-2 | | | 175 |
| - | 1 | 1901680-2 | | | 174 |
| - | 2 | 21045-3 | | | 172 |
| - | REF | 994970-2 | | | 164 |
| - | 1 | 240638-1 | | | 163 |
| - | 1 | 2119641-2 | | | 152 |
| - | 1 | 2168083-8 | | | 144 |
| - | 1 | 2119655-6 | | | 141 |
| - | 1 | 1803518-1 | | | 140 |
| - | 1 | 3-23627-7 | | | 137 |
| - | 1 | 455888-6 | | | 82 |
| - | 1 | 2119791-5 | | | 73 |
| - | 1 | 1803607-2 | | | 71 |
| - | 2 | 2-18032-2 | | | 70 |
| - | 1 | 2119943-1 | | | 69 |
| - | 1 | 2119740-1 | | | 67 |
| - | 2 | 2168078-1 | | | 66 |
| - | 1 | 1901681-9 | | | 65 |
| - | 2 | 2168400-8 | | | 64 |
| - | 3 | 2168400-4 | | | 57 |
| - | 2 | 2168083-8 | | | 56 |
| - | 2 | 5018030-1 | | | 54 |
| - | 2 | 986965-8 | | | 53 |
| - | 1 | 1-5018030-0 | | | 52 |
| - | 1 | 2119792-2 | | | 51 |
| - | 1 | 1-1752354-6 | | | 50 |
| - | 1 | 18023-9 | | | 49 |
| - | 1 | 1803602-1 | | | 41 |
| - | 7 | 1-18028-2 | | | 33 |
| - | 2 | 2168083-9 | | | 31 |
| - | 2 | 2168083-2 | | | 29 |
| - | 1 | 690455-1 | | | 27 |
| - | 2 | 1-2168083-5 | | | 25 |
| - | 1 | 1-1752371-4 | | | 24 |
| - | 1 | 240825-5 | | | 23 |
| - | 2 | 22281-7 | | | 22 |
| - | 1 | 1803292-4 | | | 20 |
| - | 2 | 1901259-7 | | | 18 |
| - | 1 | 4-240641-7 | | | 16 |
| - | 1 | 1752360-1 | | | 13 |
| - | 1 | 1-240833-3 | | | 11 |
| - | - | - | | | 10 |
| - | 1 | 5-690482-4 | | | 9 |
| 1 | 1 | 1333223-3 | | | 8 |
| - | 1 | 2217206-4 | | | 7 |
| - | - | - | | | 6 |
| - | 1 | 1-240641-6 | | | 5 |
| - | 1 | 3-238011-1 | | | 4 |
| 1 | 1 | 2-1633961-2 | | | 3 |
| - | 1 | 1-455888-2 | | | 2 |
| 1 | 1 | 456428-3 | | | 1 |

| DIMENSIONS: | TOLERANCES UNLESS OTHERWISE SPECIFIED: | DATE | BY | APPV |
|-------------|---|-----------|----------|----------|
| mm | 0 PLC ± 1 PLC ± 2 PLC ± 3 PLC ± 4 PLC ± ANGLES ± FINISH | 25MAR2013 | H. HUANG | L. ZHANG |
| MATERIAL: | | DATE | BY | APPV |
| | | 25MAR2013 | U. GUO | |

| | | | | |
|--|------|-----------|------------|---------------|
| NAME | SIZE | CAGE CODE | DRAWING NO | RESTRICTED TO |
| Ocean End Feed Applicator | A1 | 00779 | 2150321 | |
| Customer Accessible Production Drawing | | SCALE | SHEET | REV |
| | | 1:1 | 3 OF 4 | C |

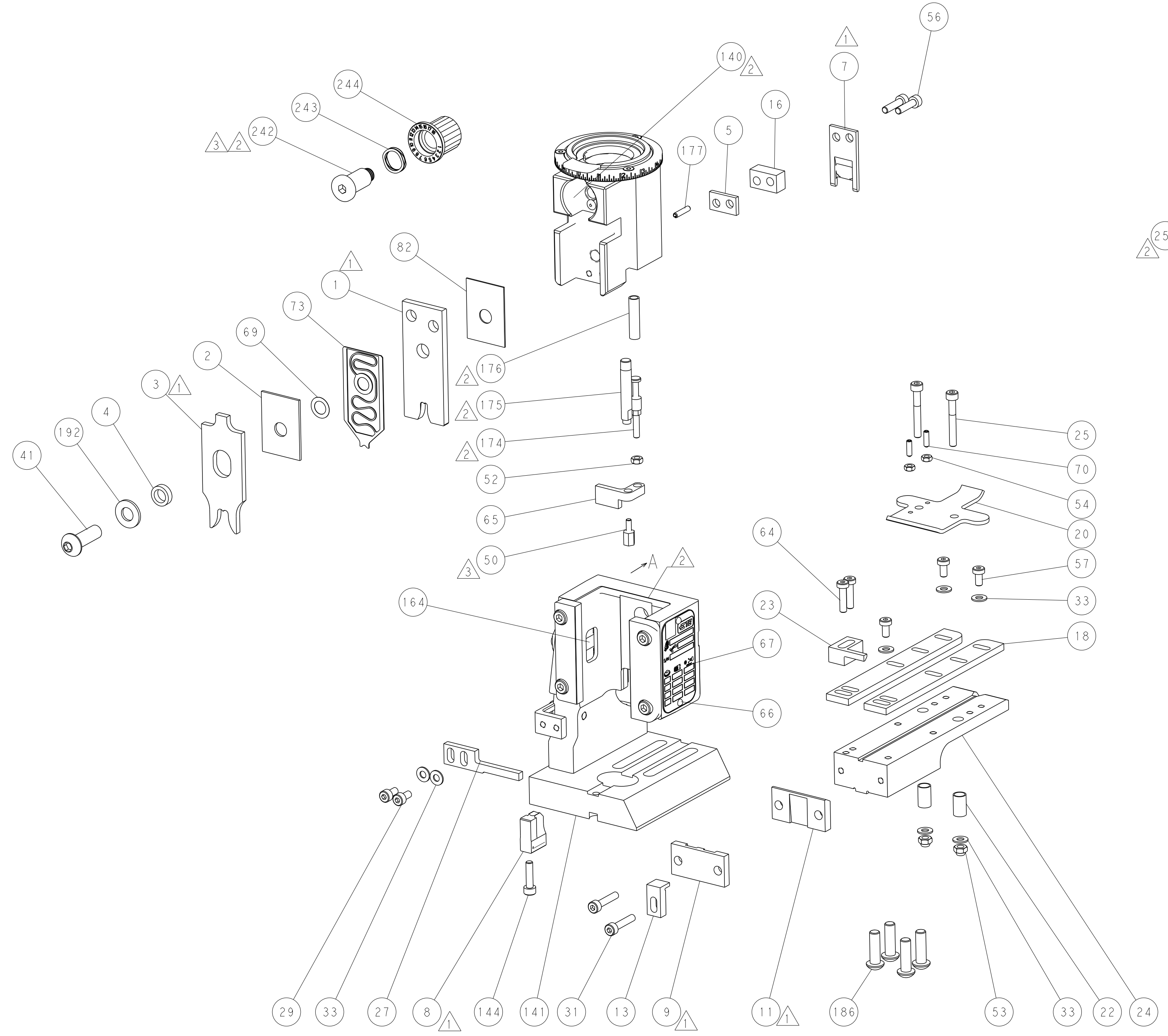
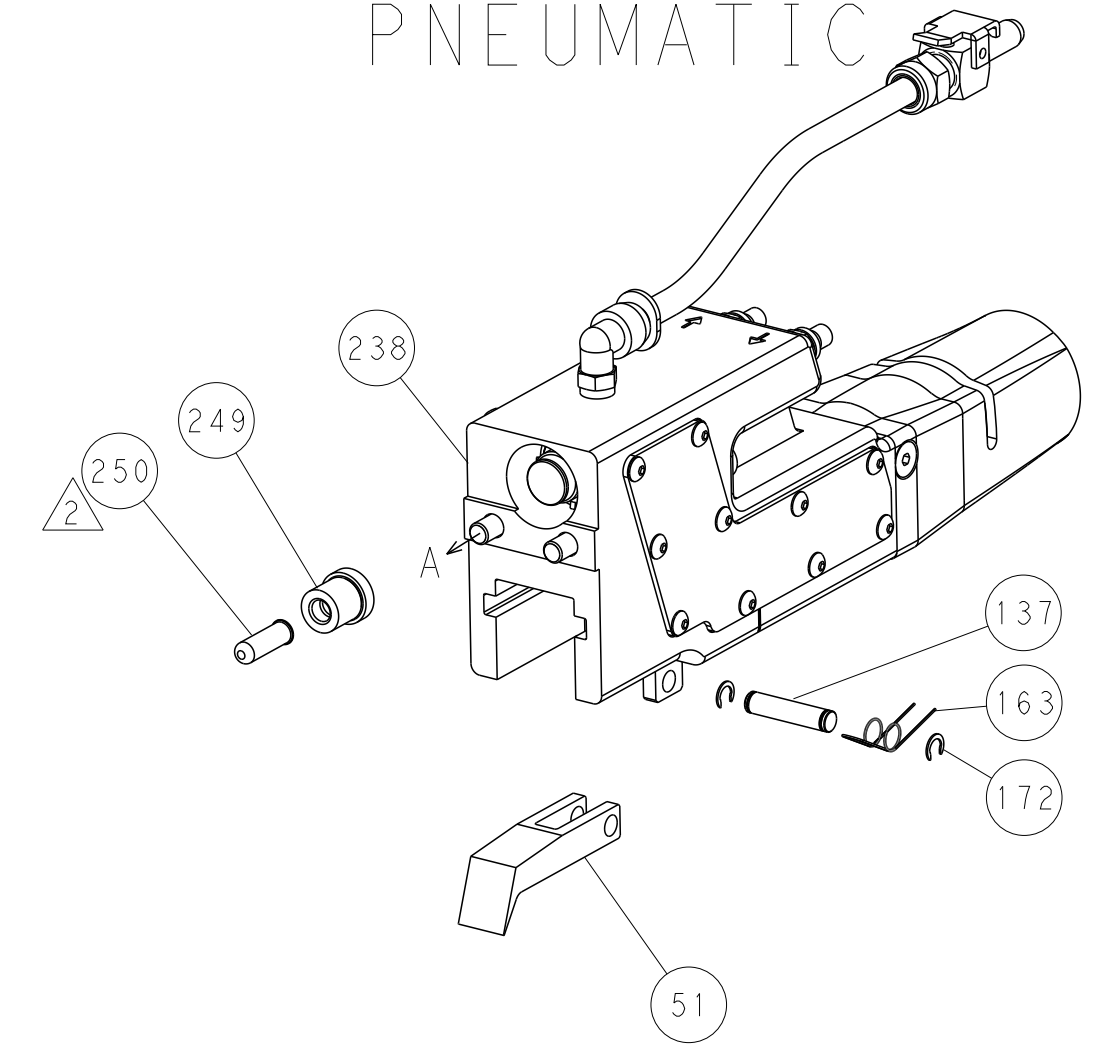
| LOC | | DIST | | REVISIONS | | | |
|-----|----|------|-----|-------------|------|-----|------|
| A | 66 | P | LTH | DESCRIPTION | DATE | DWN | APVD |
| | | - | | SEE SHEET 1 | | | |



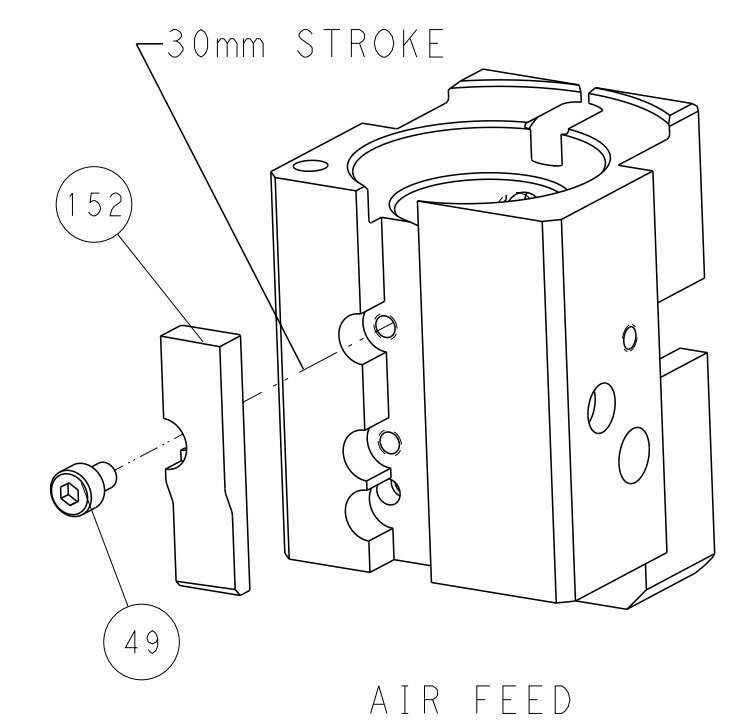
RAM AND HOLD DOWN SET-UP

FEED TYPE

PNEUMATIC



CAM POSITION



AIR FEED

PACIFIC VERSION
 Shown on sheets 3 of 4 & 4 of 4
 (Atlantic version shown on sheets 1 of 4 & 2 of 4)

| | | | |
|--|---|--|--|
| <small>THIS DRAWING IS UNPUBLISHED. RELEASED FOR PUBLICATION. ALL RIGHTS RESERVED.</small> <small>THIS IS A PRODUCT OF COMBINED TECHNOLOGY FROM TYCO ELECTRONICS CORPORATION AND THE PRODUCT OF COMBINED TECHNOLOGY FROM THE FOLLOWING ORGANIZATION(S) SHOULD BE CONTACTED FOR THE LATEST REVISION.</small> | | DWN: K. HUANG 25MAR2013 CHK: L. ZHANG 25MAR2013 APVD: J. GUO 25MAR2013 | NAME: STE TE Connectivity Harrisburg, PA 17105-3608 |
| DIMENSIONS: mm TOLERANCES UNLESS OTHERWISE SPECIFIED: 0 PLC ± 1 PLC ± 2 PLC ± 3 PLC ± 4 PLC ± ANGLES ± MATERIAL: - FINISH: - | PRODUCT SPEC: - APPLICATION SPEC: - WEIGHT: - SCALE: 1:1 | SIZE: A1 CAGE CODE: 00779 DRAWING NO: C=2150321 SHEET: 4 OF 4 REV: C | RESTRICTED TO: - Customer Accessible Production Drawing |

Mouser Electronics

Authorized Distributor

Click to View Pricing, Inventory, Delivery & Lifecycle Information:

[TE Connectivity:](#)

[7-2150321-7](#)