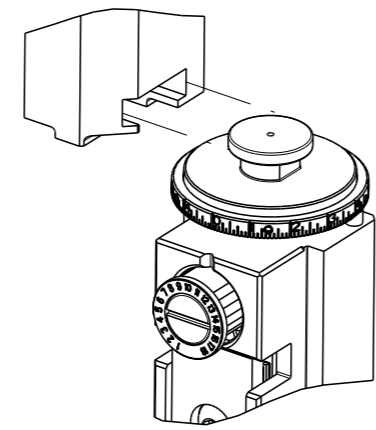


THIS DRAWING IS UNPUBLISHED.	RELEASED FOR PUBLICATION	2016	
COPYRIGHT 2016 BY TYCO ELECTRONICS CORPORATION. ALL RIGHTS RESERVED.			
PART NUMBER	REVISION	DESCRIPTION	FEED TYPE
2150117-2	E	FINE CRIMP HEIGHT ADJUST	PNEUMATIC
7-2150117-2	E	PNEUMATIC AND CRIMP TOOLING KIT	PNEUMATIC
7-2150117-7	A	CRIMP TOOLING KIT	-

ATLANTIC VERSION TERMINATOR INTERFACE ADAPTER



APPLICATOR DATA		
CRIMP	SIZE	TYPE
WIRE	2.79 mm [.110]	F
APPL INSTRUCTIONS 408-35043		

TERMINAL DATA: TE TERMINAL		TE CRIMP SPECIFICATION	
TERMINAL NAME: SPLICE (AMPLIVAR)			
WIRE STRIP LENGTH		INSULATION DIAMETER RANGE	
6.86-7.88 mm [.270-.310 IN]		∅ -	
TERMINAL APPLICATION SPECIFICATION	114-2003	-	-
TERMINALS APPLIED			
TE TERMINAL	TE TERMINAL	TE TERMINAL	TE TERMINAL
(A) 62304-1	(A) 62000-1	(B) 62305-1	(B) 62305-4
(A) 62304-2	(A) 62000-2	(B) 62305-2	
(A) 9-62304-1	(A) 622000-2	(B) 62305-3	

TERMINAL DATA: TE TERMINAL		TE CRIMP SPECIFICATION	
TERMINAL NAME: SPLICE (AMPLIVAR)			
WIRE STRIP LENGTH		INSULATION DIAMETER RANGE	
6.86-7.88 mm [.270-.310 IN]		∅2.20-3.00 mm [.087-.118 IN]	
TERMINAL APPLICATION SPECIFICATION	114-2003	-	-
TERMINALS APPLIED			
TE TERMINAL	TE TERMINAL	TE TERMINAL	TE TERMINAL
(C) 62306-1	(C) 62305-3	(D) 62307-2	(C) 62040-2
(C) 62306-2	(C) 9-62305-1	(C) 62040-1	

WIRE SIZE	CRIMP HEIGHT mm [INCH]	CRIMP HEIGHT REFERENCE SETTING
3000 CMA 19+18 MAG(2951) (A)	1.64+/-0.05 [.065+/- .002]	7.6
3000 CMA 19+18 MAG(2951) (B)	1.45+/-0.05 [.057+/- .002]	9.6
600 CMA 22 MAG(635) (A)	1.33+/-0.05 [.052+/- .002]	10.8
600 CMA 22 MAG(635) (B)	1.12+/-0.05 [.044+/- .002]	12.8

WIRE SIZE	CRIMP HEIGHT mm [INCH]	CRIMP HEIGHT REFERENCE SETTING
5000 CMA 16+17 MAG(4936) (C)	2.06+/-0.05 [.081+/- .002]	3.4
5000 CMA (D)	1.82+/-0.05 [.072+/- .002]	5.7
1500 CMA 22+22 MAG(1503)(C)	1.60+/-0.05 [.063+/- .002]	8.0
1500 CMA (D)	1.36+/-0.05 [.054+/- .002]	10.3



- RECOMMENDED SPARE PARTS
 - REFER TO SUPPLIED INSTRUCTION SHEET FOR CLEANING, LUBRICATION AND STORAGE OF APPLICATOR.
 - CRIMP HEIGHT REFERENCE SETTING WAS THE SETTING USED WHEN THE APPLICATOR WAS QUALIFIED AT THE FACTORY. ADJUSTMENT MAY BE NECESSARY WHEN RUNNING APPLICATOR IN THE FIELD.
 - TERMINAL PITCH NOT COMPATIBLE WITH MECHANICAL FEED.
 - TERMINAL LUBRICANT IS RECOMMENDED.
6. UNLESS SPECIFIED OTHERWISE TORQUE VALUES SHALL BE USED PER DOCUMENT, 101-35000.

***WARNING**
ON INSTALLATION, SET WIRE DISC TO CRIMP HEIGHT REFERENCE SETTING FOR LARGEST WIRE SIZE. CRIMP HEIGHT REFERENCE SETTINGS GREATER THAN THE VALUE SHOWN MAY CAUSE DAMAGE TO THE CRIMP TOOLING, REFER TO THE INSTRUCTION SHEET FOR PROPER SETUP AND ADJUSTMENTS.

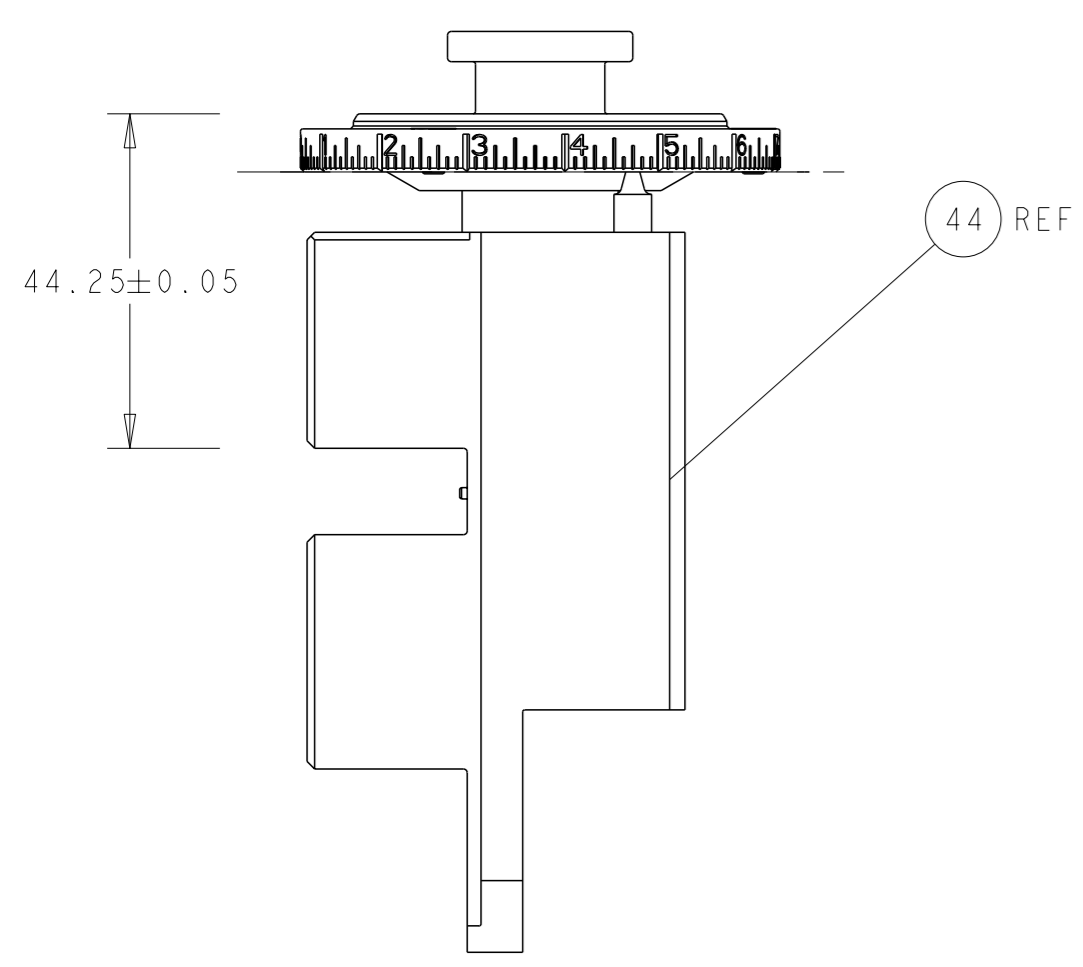
LOC	DIST	REVISIONS					
A	66	P	LY#	DESCRIPTION	DATE	OWN	APVD
		B1		ECR-17-018540	20DEC2017	YY	JDG
		C		ECR-18-006316	25APR2018	FL	TE
		D		ECR-18-015158	25OCT2018	TB	CT
		E		ECR-19-009342	17JUN2019	LG	TE

-	1	1	23238-1	INSERT, COUPLING	278	
-	24	24	2030758-3	TUBING, POLYURETHANE	277	
-	1	1	986220-3	CLAMP, CABLE, BLACK	275	
-	1	1	2844280-1	MOUNT, AIR BLAST	273	
-	1	1	2119641-1	FEED CAM, AIR FEED	248	
-	1	1	2844940-3	AIR FEED MODULE	238	
-	1	1	1-18028-0	WASHER, FLAT, REG M8	192	
-	REF	REF	994970-2	COUNTER, MAGNETIC	164	
-	3	3	1-18023-0	SCR, SKT HD CAP M4 X 8.0	143	
-	2	2	1-18024-4	SCR, BTN SKT HD CAP (M5 X 20.0)	94	
-	2	2	1-18024-1	SCR, BTN SKT HD CAP (M5 X 10.0)	93	
-	1	1	2119955-2	ASSY, LUBRICATOR, END FEED	84	
-	4	4	2168083-1	SCR, SKT HD CAP, RoHS, M3 X 8.0	80	
-	1	1	1803607-4	DOCUMENTATION PACKAGE	71	
-	2	2	2-18032-2	SCR, SET, FLT PNT, M3 X 10.0	70	
-	1	1	2119740-1	TAG, IDENTIFICATION	67	
-	2	2	2168078-1	SCREW, DRIVE, RH, RoHS, 2 x .188	66	
-	4	4	2168400-1	SHCS, LOW HEAD, RoHS, M4 X 12	60	
-	1	1	5-18022-5	SCR, HEX HD CAP, M4 X 6.0	59	
-	2	2	2168400-4	SHCS, LOW HEAD, RoHS, M4 X 8	57	
-	2	2	5018030-1	NUT, HEX, REG, RoHS, M3	54	
-	2	2	986965-8	NUT, LOCK, HEX, TORQUE (M4)	53	
-	1	1	1-2063961-3	FEED FINGER	51	
-	1	1	18023-9	SCR, SKT HD CAP M4 X 6.0	49	
-	1	1	2-2119655-1	APPLICATOR BASIC ASSEMBLY, EF	46	
-	1	1	1803517-3	RAM ASSEMBLY, EF ATLANTIC	44	
-	1	1	1803602-1	SCR, BHSC, RoHS (M8 X 25)	41	
-	8	8	1-18028-2	WASHER, FLAT, REG M4	33	
-	2	2	2-2168083-5	SCR, SKT HD CAP, RoHS, M4 X 14	29	
-	1	1	460276-2	STRIPPER, SPECIAL	27	
-	2	2	1-2168083-5	SCR, SKT HD CAP, RoHS, M4 X 30	25	
-	1	1	3-1752371-0	PLATE, STRIP GUIDE	24	
-	1	1	1-462932-0	PLATE, STRIP COVER	23	
-	2	2	2-22281-3	SPRING, COMPRESSION	22	
-	2	2	18027-2	WASHER, FLAT, REG M4	21	
-	1	1	1803292-1	DRAG	20	
-	2	2	1901259-4	GUIDE, LOWER STRIP	18	
-	4	4	1-2079383-1	SCR, BHSC, RoHS (M6 X 12)	17	
-	1	1	459684-3	PLATE GUIDE, RETAINING	11	
-	1	1	459580-1	PLATE, RETAINING	10	
-	1	1	2-459583-1	BODY, ANVIL	9	
-	1	2	459582-4	ANVIL, AMPLIVAR SPLICE	8	
-	1	1	459581-1	BLADE, SLUG	7	
-	-	-	-	-	6	
-	-	-	-	-	5	
-	-	-	-	-	4	
-	1	2	459587-1	GUIDE, CRIMPER	3	
-	-	-	-	-	2	
-	1	2	459585-1	CRIMPER, BLUNT F	1	
-	77	72	2	PART NO	DESCRIPTION	ITEM NO

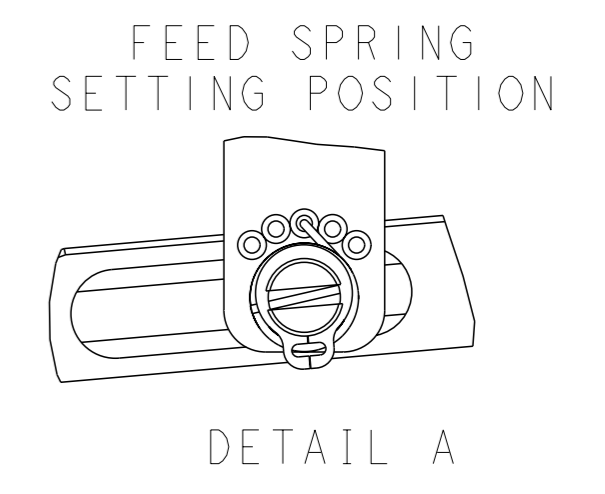
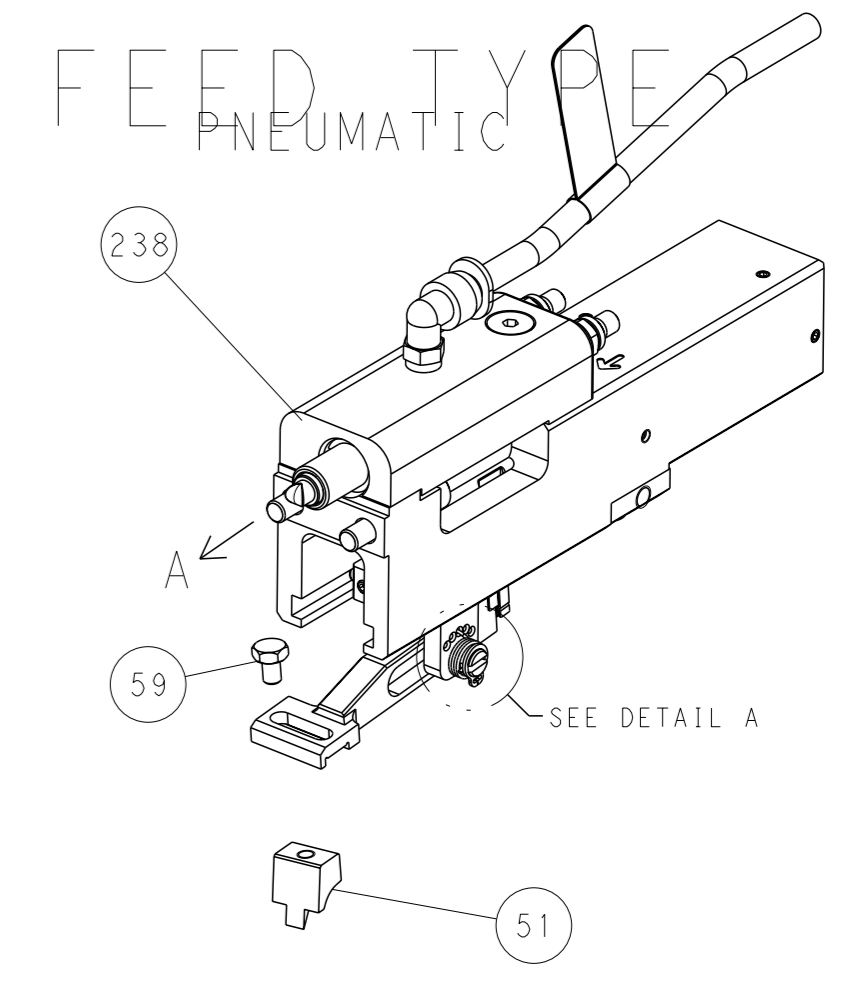
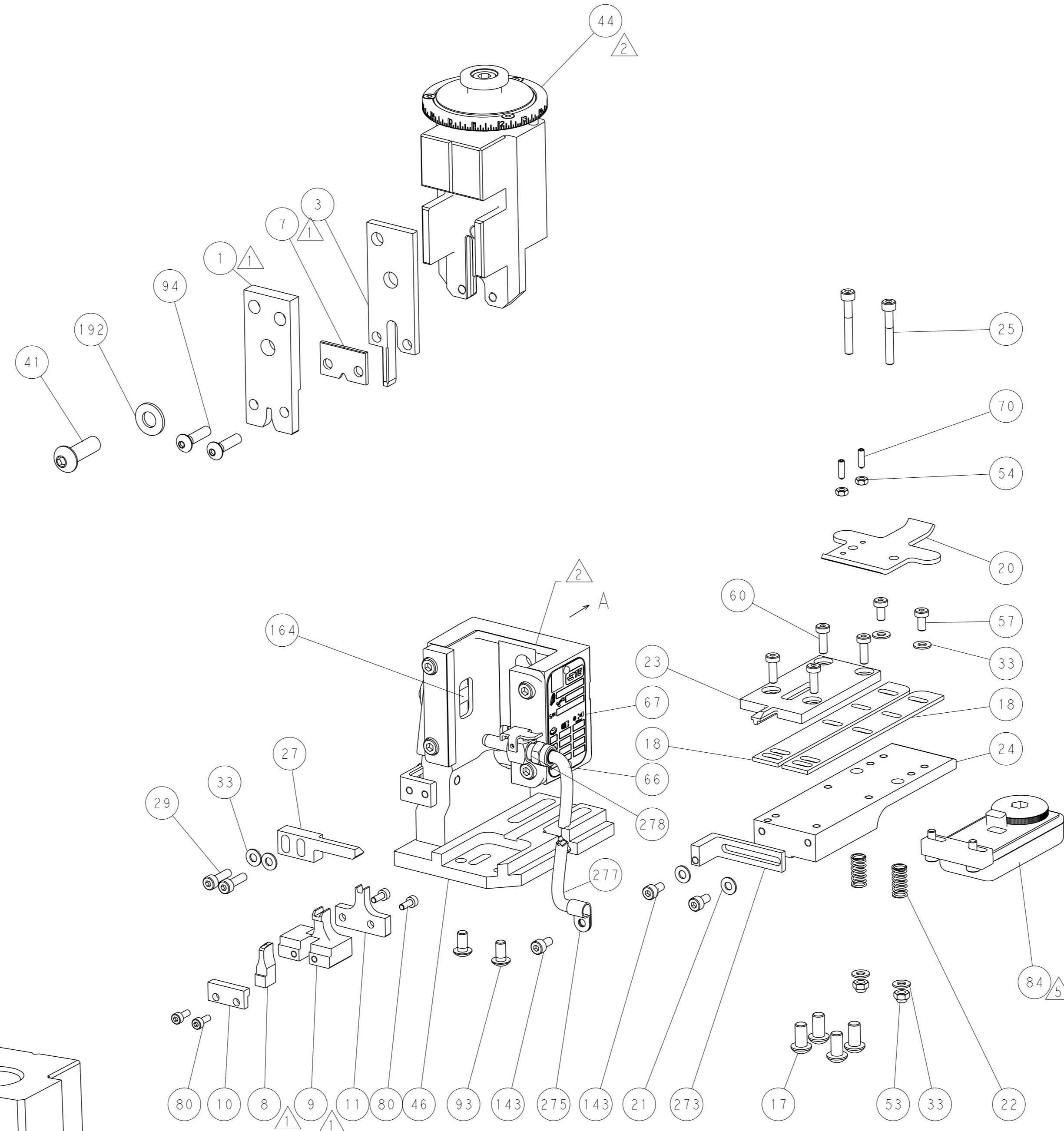
ATLANTIC VERSION
Shown on sheets 1 of 4 & 2 of 4
(Pacific version shown on sheets 3 of 4 & 4 of 4)

DIMENSIONS: mm		TOLERANCES UNLESS OTHERWISE SPECIFIED:		DWG: B. WEAVER 16FEB2016		CHK: G. BAILEY 16FEB2016		APVD: G. BAILEY 16FEB2016		NAME: Ocean End Feed Applicator	
0 PLC	±	1 PLC	±	2 PLC	±	3 PLC	±	4 PLC	±	SIZE	CAGE CODE
ANGLES	±	FINISH	±	WEIGHT	-	SCALE	1:1	SHEET	1	OF	4
Customer Accessible Production Drawing										REV	E

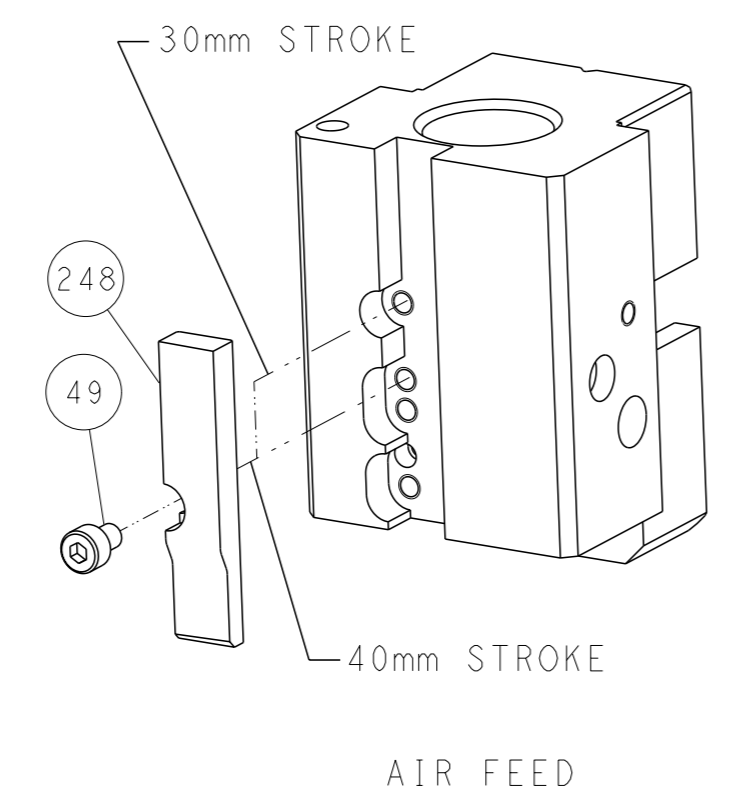
LOC	DIST	REVISIONS			
A	66	REV	DATE	OWN	APVD
-	-	SEE SHEET 1	-	-	-



RAM SET-UP



CAM POSITIONS

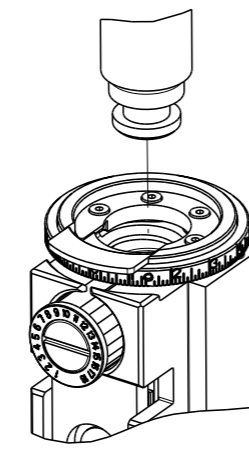


ATLANTIC VERSION
 Shown on sheets 1 of 4 & 2 of 4
 (Pacific version shown on sheets 3 of 4 & 4 of 4)

<small>THIS DRAWING IS A CONTROLLED DOCUMENT FOR TYCO ELECTRONICS CORPORATION. IT IS SUBJECT TO CHANGE AND THE CONTROL AND REVISIONS ORGANIZATION SHOULD BE CONTACTED FOR THE LATEST REVISION.</small>		OWN: B. WEAVER CHK: G. BAILEY APVD: G. BAILEY	DATE: 16FEB2016 DATE: 16FEB2016 DATE: 16FEB2016	NAME: Ocean End Feed Applicator	SIZE: A1 CAGE CODE: 00779 DRAWING NO: C=2150117	RESTRICTED TO: -
DIMENSIONS: mm TOLERANCES UNLESS OTHERWISE SPECIFIED: 0 PLC ± 1 PLC ± 2 PLC ± 3 PLC ± 4 PLC ± ANGLES FINISH ±	WEIGHT: - SCALE: 1:1	SHEET: 2 of 4	REV: E	Customer Accessible Production Drawing		

THIS DRAWING IS UNPUBLISHED.	RELEASED FOR PUBLICATION	2016	
COPYRIGHT 2016 BY TYCO ELECTRONICS CORPORATION. ALL RIGHTS RESERVED.			
PART NUMBER	REVISION	DESCRIPTION	FEED TYPE
2-2150117-2	E	FINE CRIMP HEIGHT ADJUST	PNEUMATIC
7-2150117-7	A	CRIMP TOOLING KIT	-

PACIFIC VERSION TERMINATOR
INTERFACE ADAPTER



APPLICATOR DATA		
CRIMP	SIZE	TYPE
WIRE	2.79 mm [.110]	F
APPL INSTRUCTIONS 408-35043		

TERMINAL DATA: TE TERMINAL				TE CRIMP SPECIFICATION			
TERMINAL NAME: SPLICE (AMPLIVAR)							
WIRE STRIP LENGTH 6.86-7.88 mm [.270-.310 IN]				INSULATION DIAMETER RANGE Ø -			
TERMINAL APPLICATION SPECIFICATION 114-2003							
TERMINALS APPLIED $\triangle 4 \triangle 5$							
TE TERMINAL	TE TERMINAL	TE TERMINAL	TE TERMINAL	TE TERMINAL	TE TERMINAL	TE TERMINAL	TE TERMINAL
(A) 62304-1	(A) 62000-1	(B) 62305-1	(B) 62305-4	(A) 62304-2	(A) 62000-2	(B) 62305-2	
(A) 9-62304-1	(A) 622000-2	(B) 62305-3					

TERMINAL DATA: TE TERMINAL				TE CRIMP SPECIFICATION			
TERMINAL NAME: SPLICE (AMPLIVAR)							
WIRE STRIP LENGTH 6.86-7.88 mm [.270-.310 IN]				INSULATION DIAMETER RANGE Ø 2.20-3.00 mm [.087-.118 IN]			
TERMINAL APPLICATION SPECIFICATION 114-2003							
TERMINALS APPLIED $\triangle 4 \triangle 5$							
TE TERMINAL	TE TERMINAL	TE TERMINAL	TE TERMINAL	TE TERMINAL	TE TERMINAL	TE TERMINAL	TE TERMINAL
(C) 62306-1	(C) 62305-3	(D) 62307-2	(C) 62040-2	(C) 62306-2	(C) 9-62305-1	(C) 62040-1	

WIRE SIZE	CRIMP HEIGHT mm [INCH]	CRIMP HEIGHT REFERENCE SETTING
3000 CMA 19+18 $\frac{1}{2}$ MAG(2951) (A)	1.64+/-0.05 [.065+/- .002]	7.6
3000 CMA 19+18 $\frac{1}{2}$ MAG(2951) (B)	1.45+/-0.05 [.057+/- .002]	9.6
600 CMA 22 $\frac{1}{2}$ MAG(635) (A)	1.33+/-0.05 [.052+/- .002]	10.8
600 CMA 22 $\frac{1}{2}$ MAG(635) (B)	1.12+/-0.05 [.044+/- .002]	12.8

WIRE SIZE	CRIMP HEIGHT mm [INCH]	CRIMP HEIGHT REFERENCE SETTING
5000 CMA 16+17 MAG(4936) (C)	2.06+/-0.05 [.081+/- .002]	3.4
5000 CMA (D)	1.82+/-0.05 [.072+/- .002]	5.7
1500 CMA 22 $\frac{1}{2}$ +22 MAG(1503) (C)	1.60+/-0.05 [.063+/- .002]	8.0
1500 CMA (D)	1.36+/-0.05 [.054+/- .002]	10.3

- RECOMMENDED SPARE PARTS
 - \triangle REFER TO SUPPLIED INSTRUCTION SHEET FOR CLEANING, LUBRICATION AND STORAGE OF APPLICATOR.
 - $\triangle 3$ CRIMP HEIGHT REFERENCE SETTING WAS THE SETTING USED WHEN THE APPLICATOR WAS QUALIFIED AT THE FACTORY. ADJUSTMENT MAY BE NECESSARY WHEN RUNNING APPLICATOR IN THE FIELD.
 - $\triangle 4$ TERMINAL PITCH NOT COMPATIBLE WITH MECHANICAL FEED.
 - $\triangle 5$ TERMINAL LUBRICANT IS RECOMMENDED.
6. UNLESS SPECIFIED OTHERWISE TORQUE VALUES SHALL BE USED PER DOCUMENT, 101-35000.

***WARNING**
ON INSTALLATION, SET WIRE DISC TO CRIMP HEIGHT REFERENCE SETTING FOR LARGEST WIRE SIZE. CRIMP HEIGHT REFERENCE SETTINGS GREATER THAN THE VALUE SHOWN MAY CAUSE DAMAGE TO THE CRIMP TOOLING, REFER TO THE INSTRUCTION SHEET FOR PROPER SETUP AND ADJUSTMENTS.

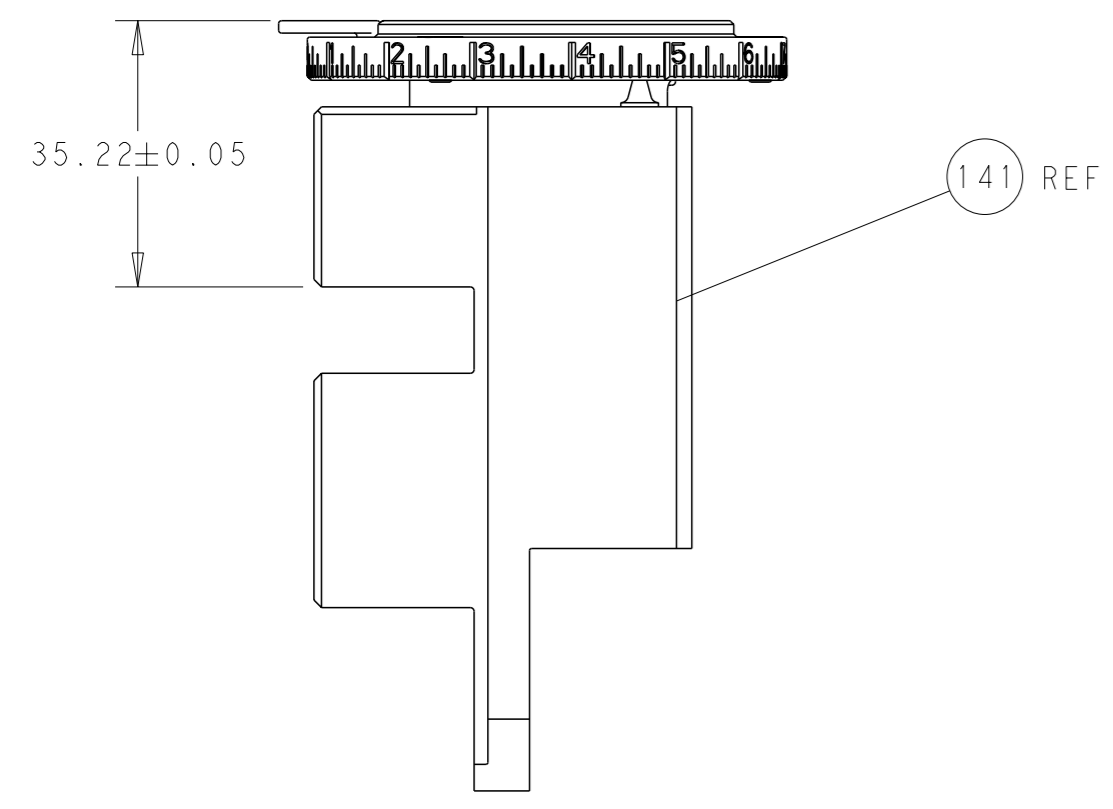
PACIFIC VERSION
Shown on sheets 3 of 4 & 4 of 4
(Atlantic version shown on sheets 1 of 4 & 2 of 4)

LOC	DIST	REVISIONS					
A	66	P	LYR	DESCRIPTION	DATE	OWN	APVD
		-		SEE SHEET 1	-	-	-

-	1	23238-1	INSERT, COUPLING	278
-	24	2030758-3	TUBING, POLYURETHANE	277
-	1	986220-3	CLAMP, CABLE, BLACK	275
-	1	2844280-1	MOUNT, AIR BLAST	273
-	1	2844940-3	AIR FEED MODULE	238
-	1	1-18028-0	WASHER, FLAT, REG M8	192
-	4	2-18024-1	SCR, BTN SKT HD CAP (M6 X 25.0)	186
-	REF	994970-2	COUNTER, MAGNETIC	164
-	1	2119641-2	FEED CAM, AIR FEED	152
-	3	1-18023-0	SCR, SKT HD CAP M4 X 8.0	143
-	1	2-2119655-2	APPLICATOR BASIC ASSEMBLY, EF	141
-	1	1803518-3	RAM ASSEMBLY, EF PACIFIC	140
-	2	1-18024-3	SCR, BTN SKT HD CAP (M5 X 16.0)	95
-	2	1-18024-4	SCR, BTN SKT HD CAP (M5 X 20.0)	94
-	1	2119955-2	ASSY, LUBRICATOR, END FEED	84
-	4	2168083-1	SCR, SKT HD CAP, RoHS, M3 X 8.0	80
-	1	1803607-4	DOCUMENTATION PACKAGE	71
-	2	2-18032-2	SCR, SET, FLT PNT, M3 X 10.0	70
-	1	2119740-1	TAG, IDENTIFICATION	67
-	2	2168078-1	SCREW, DRIVE, RH, RoHS, 2 x .188	66
-	4	2168400-1	SHCS, LOW HEAD, RoHS, M4 X 12	60
-	1	5-18022-5	SCR, HEX HD CAP, M4 X 6.0	59
-	2	2168400-4	SHCS, LOW HEAD, RoHS, M4 X 8	57
-	2	5018030-1	NUT, HEX, REG, RoHS, M3	54
-	2	986965-8	NUT, LOCK, HEX, TORQUE (M4)	53
-	1	1-2063961-3	FEED FINGER	51
-	1	18023-9	SCR, SKT HD CAP M4 X 6.0	49
-	1	1803602-1	SCR, BHSC, RoHS (M8 X 25)	41
-	8	1-18028-2	WASHER, FLAT, REG M4	33
-	2	2-2168083-5	SCR, SKT HD CAP, RoHS, M4 X 14	29
-	1	460276-2	STRIPPER, SPECIAL	27
-	2	1-2168083-5	SCR, SKT HD CAP, RoHS, M4 X 30	25
-	1	3-1752371-0	PLATE, STRIP GUIDE	24
-	1	1-462932-0	PLATE, STRIP COVER	23
-	2	2-22281-3	SPRING, COMPRESSION	22
-	2	18027-2	WASHER, FLAT, REG M4	21
-	1	1803292-1	DRAG	20
-	2	1901259-4	GUIDE, LOWER STRIP	18
-	1	459684-3	PLATE GUIDE, RETAINING	11
-	1	459580-1	PLATE, RETAINING	10
-	1	2-459583-1	BODY, ANVIL	9
-	1	459582-4	ANVIL, AMPLIVAR SPLICE	8
-	1	459581-1	BLADE, SLUG	7
-	-	-	-	6
-	-	-	-	5
-	-	-	-	4
-	1	459587-1	GUIDE, CRIMPER	3
-	-	-	-	2
-	1	459585-1	CRIMPER, BLUNT F	1

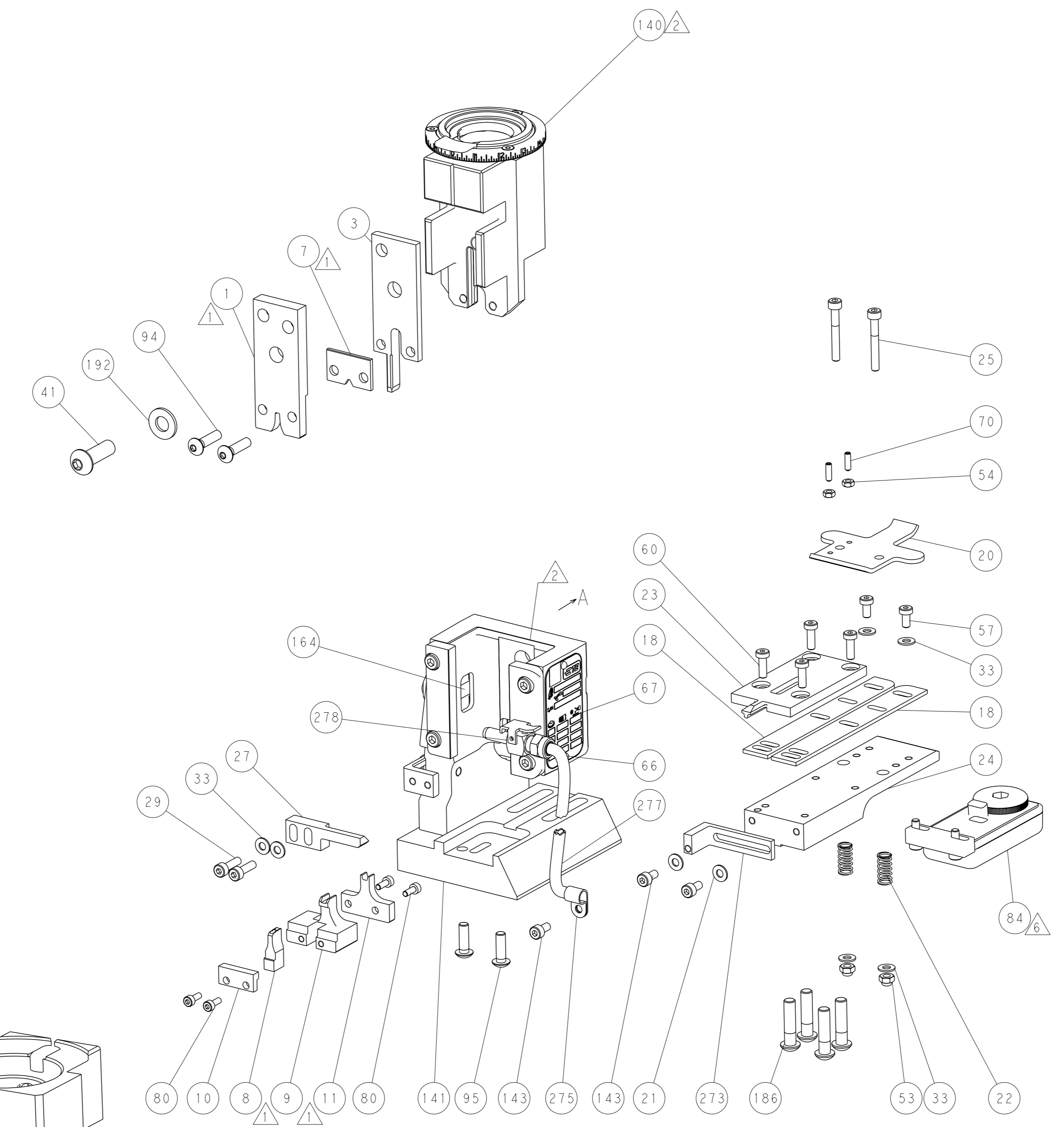
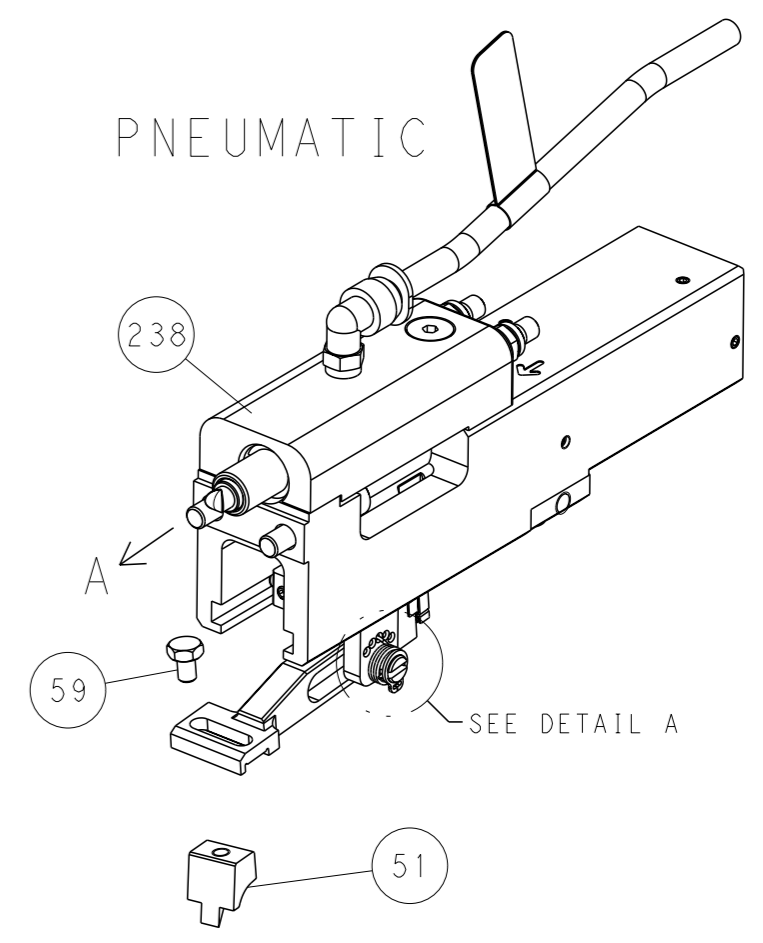
DIMENSIONS:		TOLERANCES UNLESS OTHERWISE SPECIFIED:		OWN: B. WEAVER 16FEB2016		NAME: TE Connectivity	
mm	0 PLC ±	1 PLC ±	2 PLC ±	3 PLC ±	4 PLC ±	5 PLC ±	Harrisburg, PA 17105-3608
MATERIAL:		FINISH:		APVD: G. BAILEY 16FEB2016		Customer Accessible Production Drawing	
SCALE: 1:1		SHEET: 3 of 4		REV: E		RESTRICTED TO:	

LOC	DIST	REVISIONS			
P	LYR	DESCRIPTION	DATE	OWN	APVD
A	66	SEE SHEET 1	-	-	-

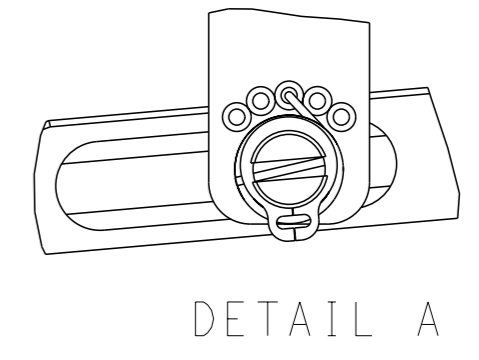


RAM SET-UP

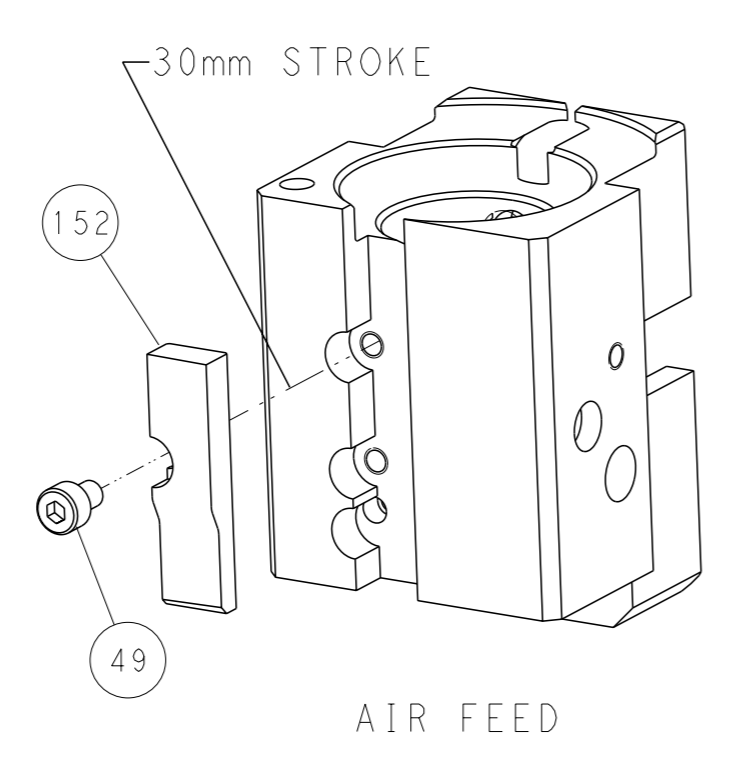
FEED TYPE



FEED SPRING SETTING POSITION



CAM POSITIONS



PACIFIC VERSION
 Shown on sheets 3 of 4 & 4 of 4
 (Atlantic version shown on sheets 1 of 4 & 2 of 4)

<small>THIS DRAWING IS A CONTROLLED DOCUMENT FROM TYCO ELECTRONICS CORPORATION. IT IS SUBJECT TO CHANGE AND TO PATENT AND RESTRICTION DESIGNATION WHICH BE CONTACTED FOR THE LATEST VERSION.</small>		OWN: B. WEAVER 16FEB2016 CHK: G. BAILEY 16FEB2016 APVD: G. BAILEY 16FEB2016	NAME: STE TE Connectivity Harrisburg, PA 17105-3608
DIMENSIONS: mm TOLERANCES UNLESS OTHERWISE SPECIFIED: 0 PLC ± 1 PLC ± 2 PLC ± 3 PLC ± 4 PLC ± ANGLES FINISH *	TOLERANCES UNLESS OTHERWISE SPECIFIED: 0 PLC ± 1 PLC ± 2 PLC ± 3 PLC ± 4 PLC ± ANGLES FINISH *	PRODUCT SPEC APPLICATION SPEC WEIGHT Customer Accessible Production Drawing	SIZE: A1 CAGE CODE: 00779 DRAWING NO: C=2150117 SCALE: 1:1 SHEET 4 OF 4 REV E

Mouser Electronics

Authorized Distributor

Click to View Pricing, Inventory, Delivery & Lifecycle Information:

[TE Connectivity:](#)

[7-2150117-7](#)