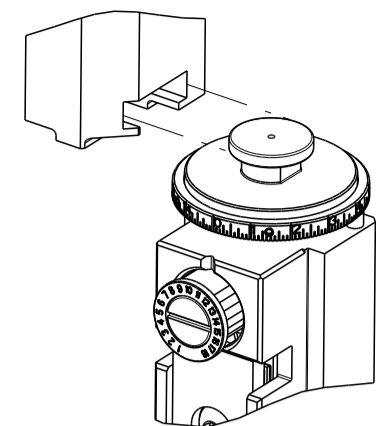


| PART NUMBER | REVISION | DESCRIPTION                     | FEED TYPE |
|-------------|----------|---------------------------------|-----------|
| 2150040-2   | D        | FINE CRIMP HEIGHT ADJUST        | PNEUMATIC |
| 7-2150040-2 | D        | PNEUMATIC AND CRIMP TOOLING KIT | PNEUMATIC |
| 7-2150040-7 | A        | CRIMP TOOLING KIT               | -         |

ATLANTIC VERSION TERMINATOR INTERFACE ADAPTER



| APPLICATOR DATA |                |      |
|-----------------|----------------|------|
| CRIMP           | SIZE           | TYPE |
| WIRE            | 2.03 mm [.080] | F    |
| INSUL           | 3.56 mm [.140] | F    |

APPLICATOR INSTRUCTIONS 408-35043

| TERMINAL DATA: TE TERMINAL              |             | TE CRIMP SPECIFICATION       |             |
|---|-------------|------------------------------|-------------|
| TERMINAL NAME: 250 POSITIVE REC EX MK-2 |             |                              |             |
| WIRE STRIP LENGTH                       |             | INSULATION DIAMETER RANGE    |             |
| 5.50-6.50 mm [.217-.256 IN]             |             | ∅1.50-3.10 mm [.059-.122 IN] |             |
| TERMINAL APPLICATION SPECIFICATION      | 114-5119    | -                            | -           |
| TERMINALS APPLIED                       |             |                              |             |
| TE TERMINAL                             | TE TERMINAL | TE TERMINAL                  | TE TERMINAL |
| 175020-1                                | 175020-2    | 179973-1                     | 179973-6    |
| 2232957-1                               |             |                              |             |

| WIRE SIZE                     | CRIMP HEIGHT mm [INCH]     | CRIMP HEIGHT REFERENCE SETTING |
|-------------------------------|----------------------------|--------------------------------|
| 18 AWG OR 0.75mm <sup>2</sup> | 1.61+/-0.05 [.063+/-0.002] | 5.3                            |
| 20 AWG OR 0.50mm <sup>2</sup> | 1.47+/-0.05 [.058+/-0.002] | 6.8                            |
| 22 AWG OR 0.30mm <sup>2</sup> | 1.41+/-0.05 [.056+/-0.002] | 7.5                            |

- RECOMMENDED SPARE PARTS
- REFER TO SUPPLIED INSTRUCTION SHEET FOR CLEANING, LUBRICATION AND STORAGE OF APPLICATOR.
- APPLY PART NUMBER 1-23419-5 LOCTITE TO THREADS OF ITEM 180. APPLY PART NUMBER 2-23419-6 LOCTITE TO THREADS OF ITEM 242.
- CRIMP HEIGHT REFERENCE SETTING WAS THE SETTING USED WHEN THE APPLICATOR WAS QUALIFIED AT THE FACTORY. ADJUSTMENT MAY BE NECESSARY WHEN RUNNING APPLICATOR IN THE FIELD.
- 5. UNLESS SPECIFIED OTHERWISE TORQUE VALUES SHALL BE USED PER DOCUMENT, 101-35000.
- TERMINAL PITCH NOT COMPATIBLE WITH MECHANICAL FEED.

**\*WARNING**  
ON INSTALLATION, SET WIRE DISC TO CRIMP HEIGHT REFERENCE SETTING FOR LARGEST WIRE SIZE. CRIMP HEIGHT REFERENCE SETTINGS GREATER THAN THE VALUE SHOWN MAY CAUSE DAMAGE TO THE CRIMP TOOLING, REFER TO THE INSTRUCTION SHEET FOR PROPER SETUP AND ADJUSTMENTS.

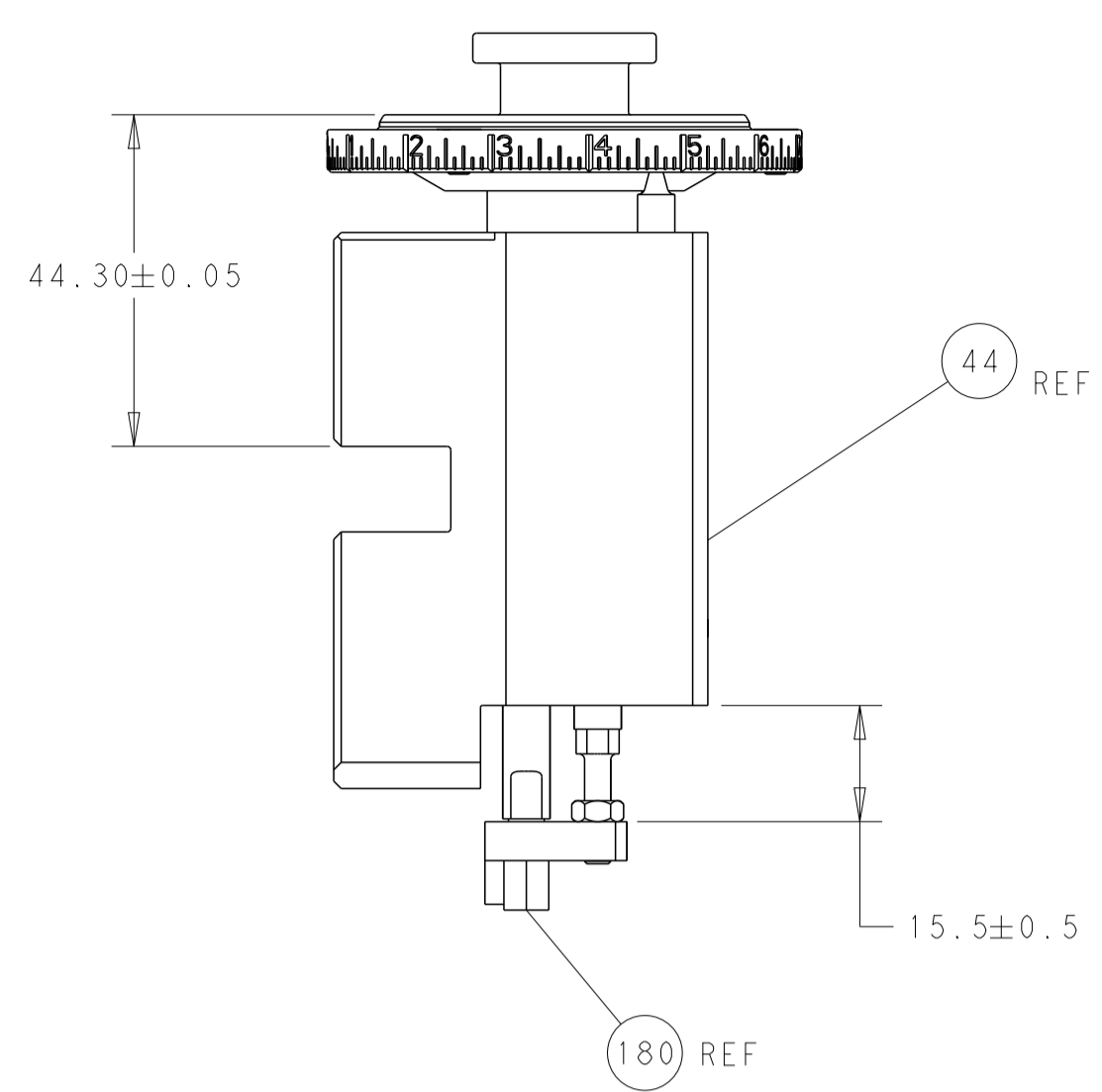
**ATLANTIC VERSION**  
Shown on sheets 1 of 4 & 2 of 4  
(Pacific version shown on sheets 3 of 4 & 4 of 4)

| LOC | DIST | REVISIONS |     |               |           |     |      |
|-----|------|-----------|-----|---------------|-----------|-----|------|
| A   | 66   | P         | LTN | DESCRIPTION   | DATE      | OWN | APVD |
|     |      | B         |     | ECR-18-003478 | 07MAR2018 | FL  | JD   |
|     |      | C         |     | ECR-18-014381 | 11SEP2018 | FL  | KZ   |
|     |      | C1        |     | ECR-19-008929 | 06JUN2019 | FZ  | TB   |
|     |      | D         |     | ECR-19-012168 | 01AUG2019 | TB  | TE   |

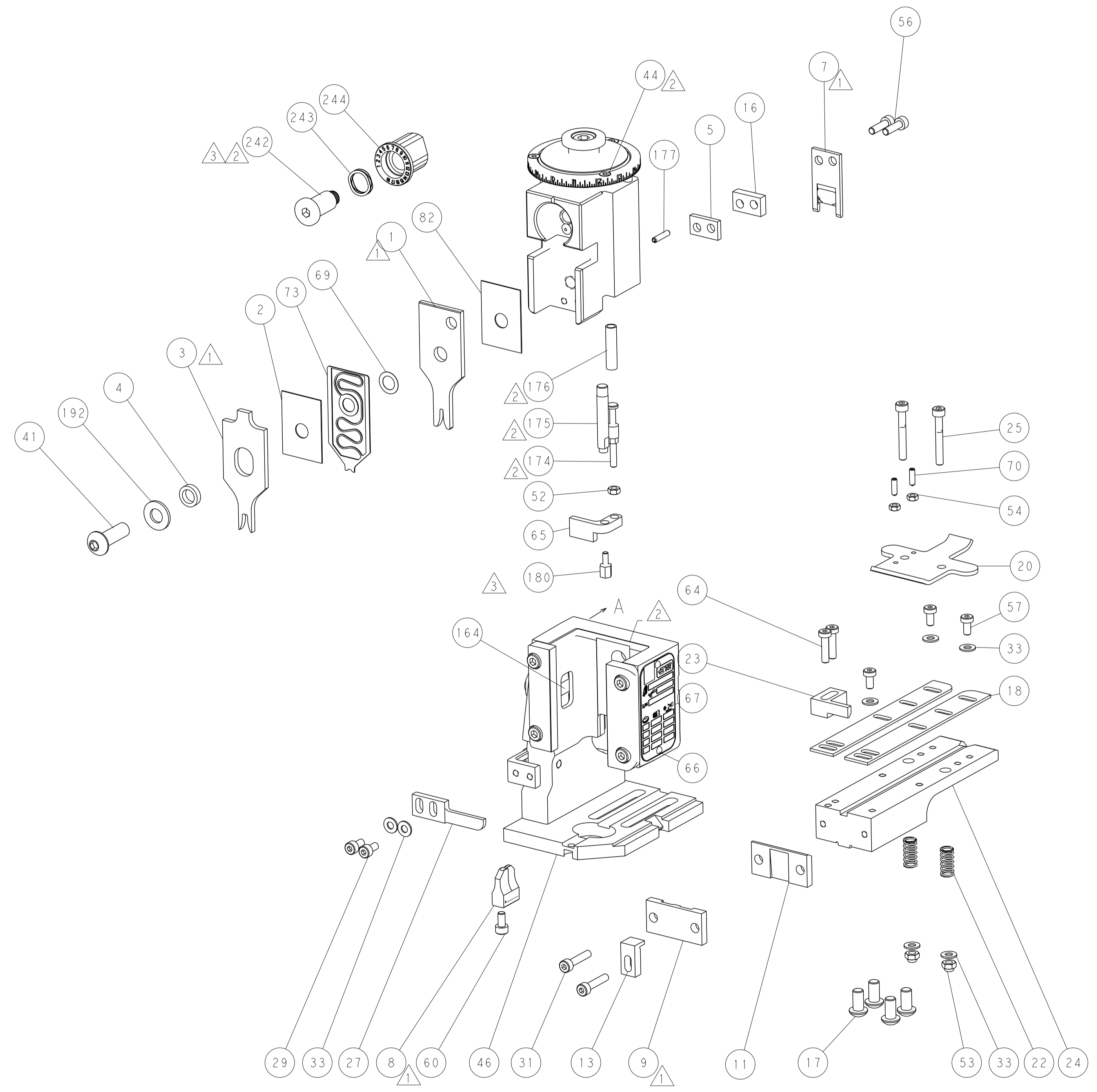
|   |     |     |             |                                     |                               |         |
|---|-----|-----|-------------|-------------------------------------|-------------------------------|---------|
| - | 1   | 1   | 2119641-1   | FEED CAM, AIR FEED                  | 248                           |         |
| - | 1   | 1   | 2119082-9   | CAM, SNAIL, INSULATION ADJUSTMENT   | 244                           |         |
| - | 1   | 1   | 2079764-1   | WASHER, WAVE SPRING, CREST-TO-CREST | 243                           |         |
|   | -   | 1   | 2119083-1   | RETAINER, INSULATION DIAL           | 242                           |         |
| - | 1   | 1   | 2844940-3   | AIR FEED MODULE                     | 238                           |         |
| - | 1   | 1   | 1-18028-0   | WASHER, FLAT, REG M8                | 192                           |         |
|   | -   | 1   | 1-1752354-1 | STANDOFF, HOLD-DOWN                 | 180                           |         |
| - | 1   | 1   | 6-993111-6  | PIN, SLOTTED SPRING 3.0 X 14.0      | 177                           |         |
| - | 1   | 1   | 8-22280-7   | SPRING, COMPRESSION                 | 176                           |         |
| - | 1   | 1   | 1752353-2   | GUIDE PIN, HOLDDOWN                 | 175                           |         |
| - | 1   | 1   | 1901680-2   | GUIDE PIN, HOLDDOWN                 | 174                           |         |
| - | REF | REF | 994970-2    | COUNTER, MAGNETIC                   | 164                           |         |
| - | 1   | 1   | 455888-5    | SPACER, CRIMPER                     | 82                            |         |
| - | 1   | 1   | 2119791-5   | DEPRESSOR, WIRE                     | 73                            |         |
| - | 1   | 1   | 1803607-4   | DOCUMENTATION PACKAGE               | 71                            |         |
| - | 2   | 2   | 2-18032-2   | SCR, SET, FLT PNT, M3 X 10.0        | 70                            |         |
| - | 1   | 1   | 2119943-1   | WASHER, SPACER                      | 69                            |         |
| - | 1   | 1   | 2119740-1   | TAG, IDENTIFICATION                 | 67                            |         |
| - | 2   | 2   | 2168078-1   | SCREW, DRIVE, RH, RoHS, 2 x .188    | 66                            |         |
| - | 1   | 1   | 1901681-1   | HOLDDOWN, TERMINAL                  | 65                            |         |
| - | 2   | 2   | 2168400-8   | SHCS, LOW HEAD, RoHS, M4 X 16       | 64                            |         |
| - | 1   | 1   | 2168083-2   | SCR, SKT HD CAP, RoHS, M4 X 8.0     | 60                            |         |
| - | 1   | 1   | 5-18022-5   | SCR, HEX HD CAP, M4 X 6.0           | 59                            |         |
| - | 3   | 3   | 2168400-4   | SHCS, LOW HEAD, RoHS, M4 X 8        | 57                            |         |
| - | 2   | 2   | 2-2168083-5 | SCR, SKT HD CAP, RoHS, M4 X 14      | 56                            |         |
| - | 2   | 2   | 5018030-1   | NUT, HEX, REG, RoHS, M3             | 54                            |         |
| - | 2   | 2   | 986965-8    | NUT, LOCK, HEX, TORQUE (M4)         | 53                            |         |
| - | 1   | 1   | 1-5018030-0 | NUT, HEX, REG, RoHS, M3.5           | 52                            |         |
| - | 1   | 1   | 2063961-1   | FEED FINGER                         | 51                            |         |
| - | 1   | 1   | 18023-9     | SCR, SKT HD CAP M4 X 6.0            | 49                            |         |
| - | 1   | 1   | 2119655-5   | APPLICATOR BASIC ASSEMBLY, EF       | 46                            |         |
| - | 1   | 1   | 1803517-1   | RAM ASSEMBLY, EF ATLANTIC           | 44                            |         |
| - | 1   | 1   | 1803602-1   | SCR, BHSC, RoHS (M8 X 25)           | 41                            |         |
| - | 7   | 7   | 1-18028-2   | WASHER, FLAT, REG M4                | 33                            |         |
| - | 2   | 2   | 2168083-9   | SCR, SKT HD CAP, RoHS, M4 X 20      | 31                            |         |
| - | 2   | 2   | 2168083-2   | SCR, SKT HD CAP, RoHS, M4 X 8.0     | 29                            |         |
| - | 1   | 1   | 240639-1    | STRIPPER (MACHINING)                | 27                            |         |
| - | 2   | 2   | 1-2168083-5 | SCR, SKT HD CAP, RoHS, M4 X 30      | 25                            |         |
| - | 1   | 1   | 2-1752371-7 | PLATE, STRIP GUIDE                  | 24                            |         |
| - | 1   | 1   | 240825-1    | PLATE, STRIP HOLD DOWN              | 23                            |         |
| - | 2   | 2   | 2-22281-3   | SPRING, COMPRESSION                 | 22                            |         |
| - | 1   | 1   | 1803292-4   | DRAG                                | 20                            |         |
| - | 2   | 2   | 1901259-3   | GUIDE, LOWER STRIP                  | 18                            |         |
| - | 4   | 4   | 1-2079383-1 | SCR, BHSC, RoHS (M6 X 12)           | 17                            |         |
| - | 1   | 1   | 2-240641-9  | SPACER                              | 16                            |         |
| - | 1   | 1   | 1752360-1   | SPACER, HOLD-DOWN                   | 13                            |         |
|   | -   | 1   | 240833-1    | PLATE, REAR SHEAR                   | 11                            |         |
| - | -   | -   | -           | -                                   | 10                            |         |
|   | -   | 1   | 690482-4    | PLATE, FRONT SHEAR                  | 9                             |         |
|   | 1   | 2   | 1           | 1333216-4                           | ANVIL, COMBINATION            | 8       |
|   | -   | 1   | 1           | 1-2217206-0                         | BLADE, SLUG                   | 7       |
| - | 1   | 1   | 5-240641-2  | SPACER                              | 5                             |         |
| - | 1   | 1   | 238011-2    | BLOCK, CRIMPER SPACER               | 4                             |         |
|   | 1   | 2   | 1           | 2-1633961-3                         | CRIMPER, INSULATION F PREMIUM | 3       |
| - | 1   | 1   | 455888-5    | SPACER, CRIMPER                     | 2                             |         |
|   | 1   | 2   | 1           | 1-456405-5                          | CRIMPER, WIRE PREMIUM         | 1       |
| - | 77  | 72  | -2          | PART NO                             | DESCRIPTION                   | ITEM NO |

| DIMENSIONS:                            |         | TOLERANCES UNLESS OTHERWISE SPECIFIED: |         | DWG     |         | NAME   |        |
|--|---------|--|---------|---------|---------|--------|--------|
| mm                                     | 0 PLC ± | 1 PLC ±                                | 2 PLC ± | 3 PLC ± | 4 PLC ± | ANGLES | FINISH |
|  |         |  |         |         |         |        |        |
| MATERIAL                               |         |  |         |         |         |        |        |
| Customer Accessible Production Drawing |         |  |         | SCALE   | 1:1     | SHEET  | 1 OF 4 |

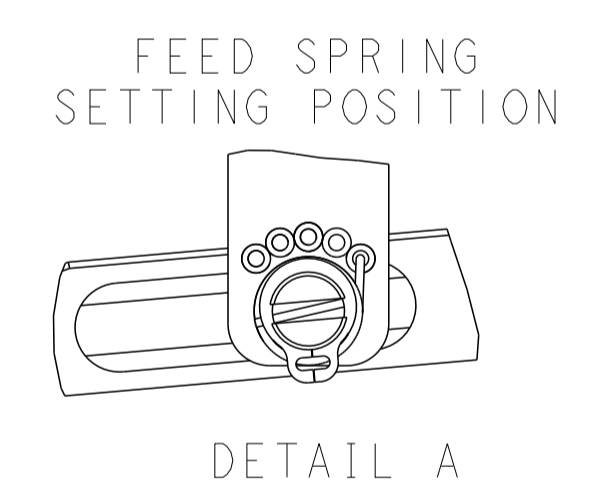
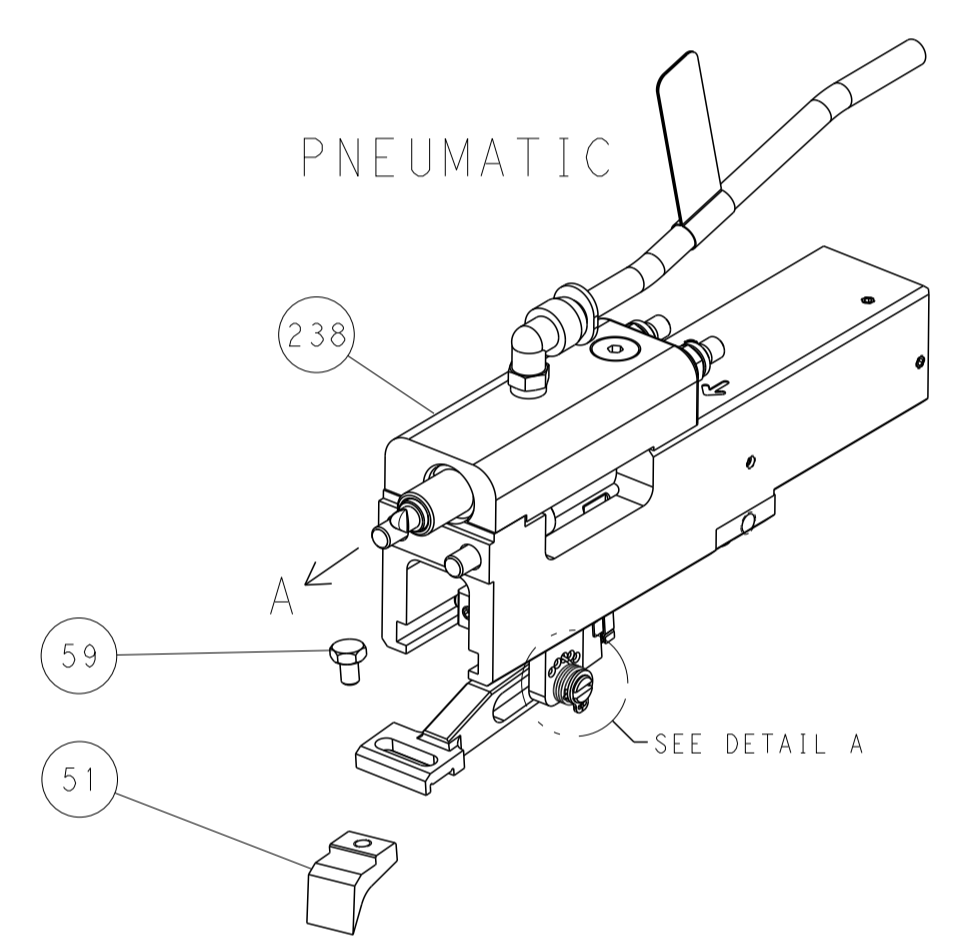
| LOC |    | DIST |     | REVISIONS   |      |     |      |
|-----|----|------|-----|-------------|------|-----|------|
| A   | 66 | P    | LTH | DESCRIPTION | DATE | DMN | APVD |
|     |    | -    |     | SEE SHEET 1 |      |     |      |
|     |    |      |     |             |      |     |      |
|     |    |      |     |             |      |     |      |



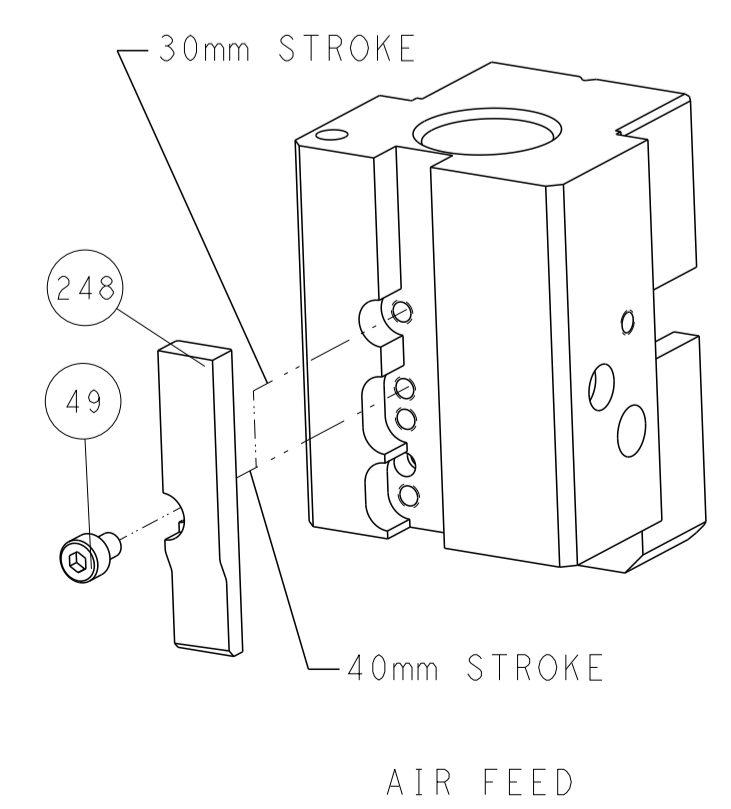
RAM AND HOLDDOWN SET-UP



FEED TYPE



CAM POSITIONS

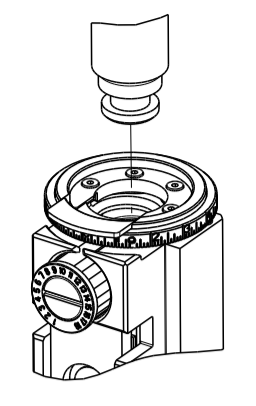


ATLANTIC VERSION  
 Shown on sheets 1 of 4 & 2 of 4  
 (Pacific version shown on sheets 3 of 4 & 4 of 4)

|             |          |  |          |   |           |  |
|-------------|----------|--|----------|---|-----------|--|
| DIMENSIONS: |          | TOLERANCES UNLESS OTHERWISE SPECIFIED: |          | DMN   | 11JAN2012 | TE Connectivity<br>Harrisburg, PA 17105-3608 |
| mm          | 0 PLC ±  | 1 PLC ±                                | 2 PLC ±  | CHK   | 11JAN2012 |  |
|             | 3 PLC ±  | 4 PLC ±                                | ANGLES ± | APVD  | 11JAN2012 | NAME   |
|             | MATERIAL | FINISH                                 | WEIGHT   | I. CRUZ<br>PRODUCT SPEC<br>APPLICATION SPEC |           | SIZE   |
|             |          |  |          | A1 00779 ©=2150040                          |           | CAGE CODE                                    |
|             |          |  |          | Customer Accessible Production Drawing      |           | DRAWING NO                                   |
|             |          |  |          | SCALE 1:1                                   |           | RESTRICTED TO                                |
|             |          |  |          | SHEET 2 OF 4                                |           | REV D  |

| PART NUMBER | REVISION | DESCRIPTION              | FEED TYPE |
|-------------|----------|--------------------------|-----------|
| 2-2150040-2 | D        | FINE CRIMP HEIGHT ADJUST | PNEUMATIC |
| 7-2150040-7 | A        | CRIMP TOOLING KIT        | -         |

PACIFIC VERSION TERMINATOR  
 INTERFACE ADAPTER



APPLICATOR DATA

| CRIMP | SIZE           | TYPE |
|-------|----------------|------|
| WIRE  | 2.03 mm (.080) | F    |
| INSUL | 3.56 mm (.140) | F    |

APPLICATOR INSTRUCTIONS  
 408-35043

TERMINAL DATA: TE TERMINAL TE CRIMP SPECIFICATION

TERMINAL NAME: 250 POSITIVE REC EX MK-2

| WIRE STRIP LENGTH           | INSULATION DIAMETER RANGE   |
|-----------------------------|-----------------------------|
| 5.50-6.50 mm (.217-.256 IN) | 1.50-3.10 mm (.059-.122 IN) |

TERMINAL APPLICATION SPECIFICATION

| TE TERMINAL | TE TERMINAL | TE TERMINAL | TE TERMINAL |
|-------------|-------------|-------------|-------------|
| 175020-1    | 175020-2    | 179973-1    | 179973-6    |
| 2232957-1   |             |             |             |

| WIRE SIZE         | CRIMP HEIGHT mm [INCH]     | CRIMP HEIGHT REFERENCE SETTING |
|-------------------|----------------------------|--------------------------------|
| 18 AWG OR 0.75mm2 | 1.61+/-0.05 [.063+/-0.002] | 5.3                            |
| 20 AWG OR 0.50mm2 | 1.47+/-0.05 [.058+/-0.002] | 6.8                            |
| 22 AWG OR 0.30mm2 | 1.41+/-0.05 [.056+/-0.002] | 7.5                            |



- 1 RECOMMENDED SPARE PARTS
- 2 REFER TO SUPPLIED INSTRUCTION SHEET FOR CLEANING, LUBRICATION AND STORAGE OF APPLICATOR.
- 3 APPLY PART NUMBER 1-23419-5 LOCTITE TO THREADS OF ITEM 180. APPLY PART NUMBER 2-23419-6 LOCTITE TO THREADS OF ITEM 242.
- 4 CRIMP HEIGHT REFERENCE SETTING WAS THE SETTING USED WHEN THE APPLICATOR WAS QUALIFIED AT THE FACTORY. ADJUSTMENT MAY BE NECESSARY WHEN RUNNING APPLICATOR IN THE FIELD.
- 5. UNLESS SPECIFIED OTHERWISE TORQUE VALUES SHALL BE USED PER DOCUMENT, 101-35000.
- 6 TERMINAL PITCH NOT COMPATIBLE WITH MECHANICAL FEED.

**\*WARNING**  
 ON INSTALLATION, SET WIRE DISC TO CRIMP HEIGHT REFERENCE SETTING FOR LARGEST WIRE SIZE. CRIMP HEIGHT REFERENCE SETTINGS GREATER THAN THE VALUE SHOWN MAY CAUSE DAMAGE TO THE CRIMP TOOLING. REFER TO THE INSTRUCTION SHEET FOR PROPER SETUP AND ADJUSTMENTS.

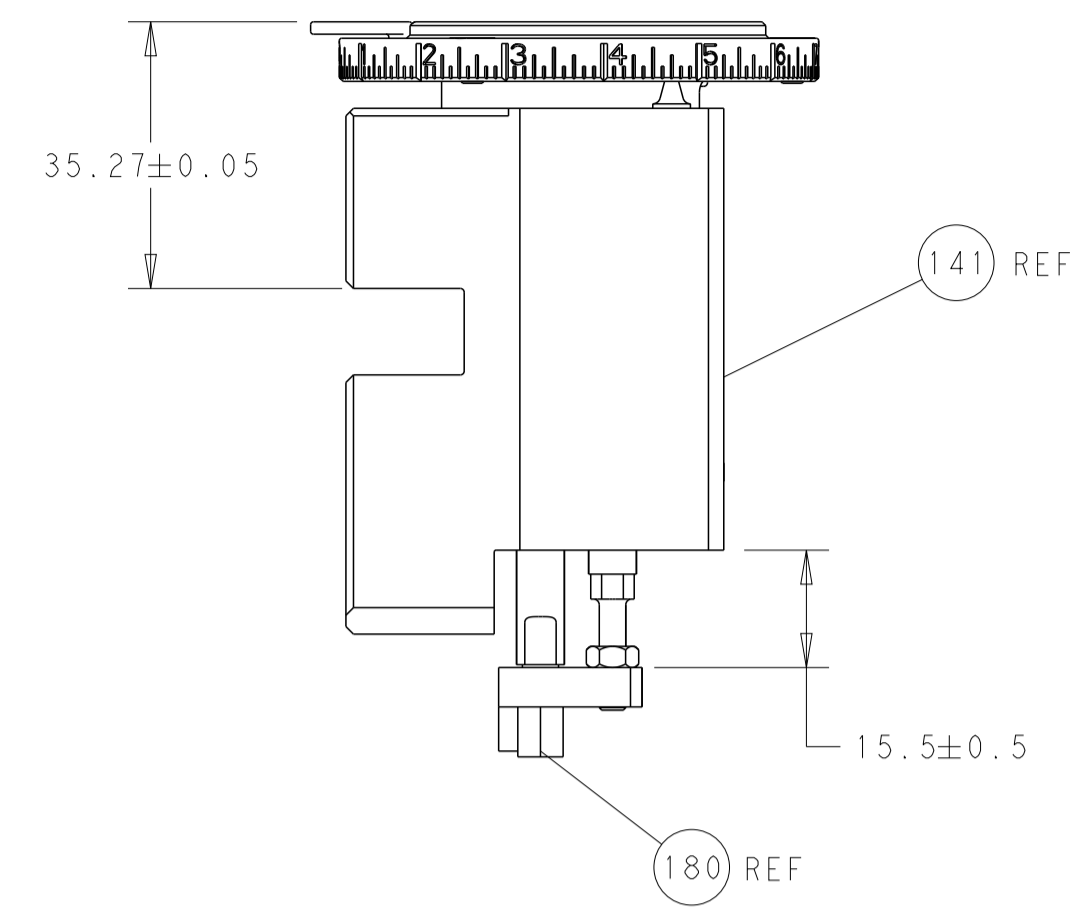
**PACIFIC VERSION**  
 Shown on sheets 3 of 4 & 4 of 4  
 (Atlantic version shown on sheets 1 of 4 & 2 of 4)

| LOC | DIST | REVISIONS |     |             |      |     |      |
|-----|------|-----------|-----|-------------|------|-----|------|
|     |      | P         | LTN | DESCRIPTION | DATE | OWN | APVD |
| A   | 66   | -         | -   | SEE SHEET 1 | -    | -   | -    |

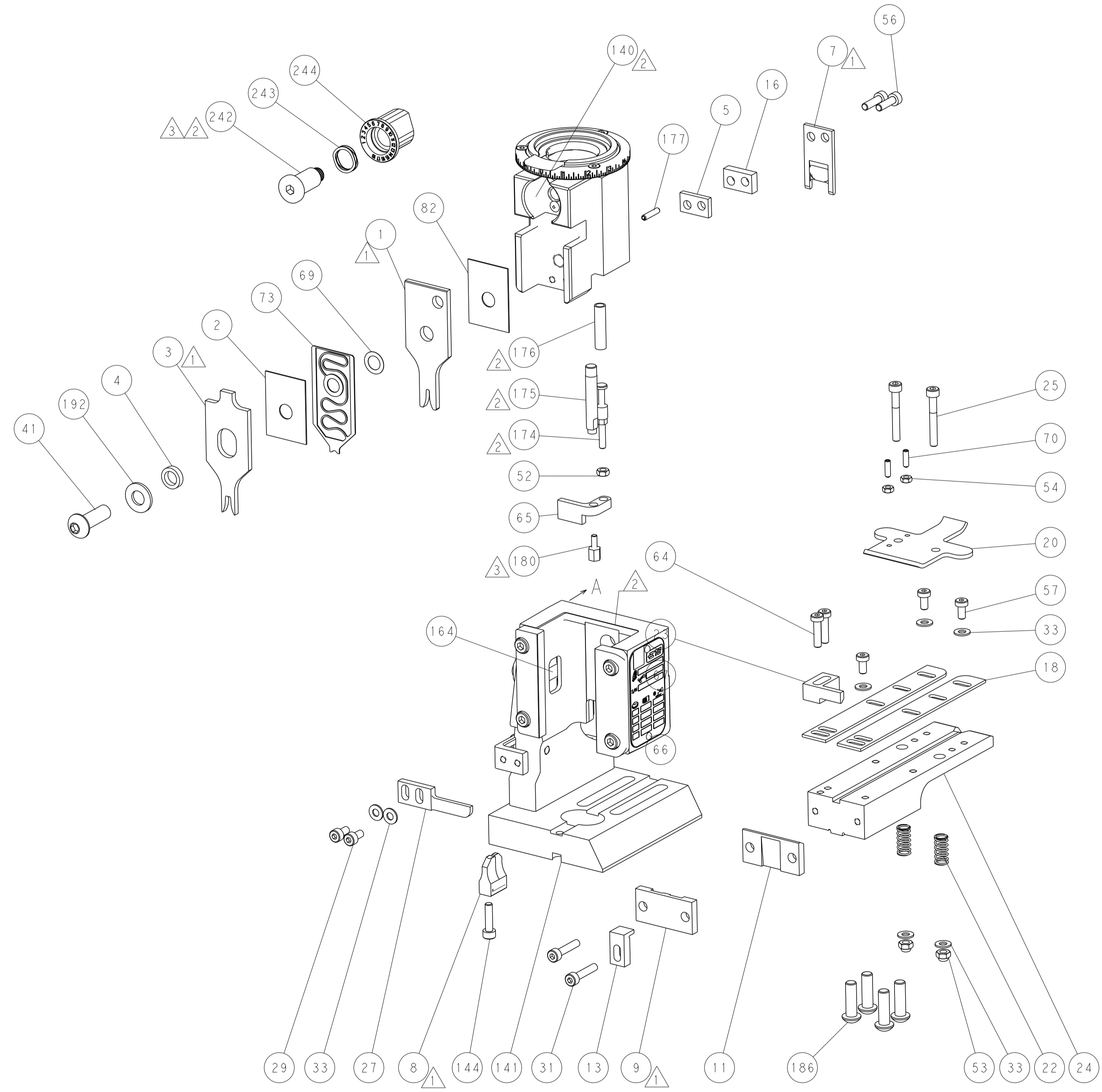
|   |     |             |                                     |     |
|---|-----|-------------|-------------------------------------|-----|
| - | 1   | 2119082-9   | CAM, SNAIL, INSULATION ADJUSTMENT   | 244 |
| - | 1   | 2079764-1   | WASHER, WAVE SPRING, CREST-TO-CREST | 243 |
| - | 1   | 2119083-1   | RETAINER, INSULATION DIAL           | 242 |
| - | 1   | 2844940-3   | AIR FEED MODULE                     | 238 |
| - | 1   | 1-18028-0   | WASHER, FLAT, REG M8                | 192 |
| - | 4   | 2079383-9   | SCR, BHSC, RoHS (M6 X 20)           | 186 |
| - | 1   | 1-1752354-1 | STANDOFF, HOLD-DOWN                 | 180 |
| - | 1   | 6-993111-6  | PIN, SLOTTED SPRING 3.0 X 14.0      | 177 |
| - | 1   | 8-22280-7   | SPRING, COMPRESSION                 | 176 |
| - | 1   | 1752353-2   | GUIDE PIN, HOLDDOWN                 | 175 |
| - | 1   | 1901680-2   | GUIDE PIN, HOLDDOWN                 | 174 |
| - | REF | 994970-2    | COUNTER, MAGNETIC                   | 164 |
| - | 1   | 2119641-2   | FEED CAM, AIR FEED                  | 152 |
| - | 1   | 2168083-8   | SCR, SKT HD CAP, RoHS, M4 X 16      | 144 |
| - | 1   | 2119655-6   | APPLICATOR BASIC ASSEMBLY, EF       | 141 |
| - | 1   | 1803518-1   | RAM ASSEMBLY, EF PACIFIC            | 140 |
| - | 1   | 455888-5    | SPACER, CRIMPER                     | 82  |
| - | 1   | 2119791-5   | DEPRESSOR, WIRE                     | 73  |
| - | 1   | 1803607-4   | DOCUMENTATION PACKAGE               | 71  |
| - | 2   | 2-18032-2   | SCR, SET, FLT PNT, M3 X 10.0        | 70  |
| - | 1   | 2119943-1   | WASHER, SPACER                      | 69  |
| - | 1   | 2119740-1   | TAG, IDENTIFICATION                 | 67  |
| - | 2   | 2168078-1   | SCREW, DRIVE, RH, RoHS, 2 x .188    | 66  |
| - | 1   | 1901681-1   | HOLDDOWN, TERMINAL                  | 65  |
| - | 2   | 2168400-8   | SHCS, LOW HEAD, RoHS, M4 X 16       | 64  |
| - | 1   | 5-18022-5   | SCR, HEX HD CAP, M4 X 6.0           | 59  |
| - | 3   | 2168400-4   | SHCS, LOW HEAD, RoHS, M4 X 8        | 57  |
| - | 2   | 2-2168083-5 | SCR, SKT HD CAP, RoHS, M4 X 14      | 56  |
| - | 2   | 5018030-1   | NUT, HEX, REG, RoHS, M3             | 54  |
| - | 2   | 986965-8    | NUT, LOCK, HEX, TORQUE (M4)         | 53  |
| - | 1   | 1-5018030-0 | NUT, HEX, REG, RoHS, M3.5           | 52  |
| - | 1   | 2063961-1   | FEED FINGER                         | 51  |
| - | 1   | 18023-9     | SCR, SKT HD CAP M4 X 6.0            | 49  |
| - | 1   | 1803602-1   | SCR, BHSC, RoHS (M8 X 25)           | 41  |
| - | 7   | 1-18028-2   | WASHER, FLAT, REG M4                | 33  |
| - | 2   | 2168083-9   | SCR, SKT HD CAP, RoHS, M4 X 20      | 31  |
| - | 2   | 2168083-2   | SCR, SKT HD CAP, RoHS, M4 X 8.0     | 29  |
| - | 1   | 240639-1    | STRIPPER (MACHINING)                | 27  |
| - | 2   | 1-2168083-5 | SCR, SKT HD CAP, RoHS, M4 X 30      | 25  |
| - | 1   | 2-1752371-7 | PLATE, STRIP GUIDE                  | 24  |
| - | 1   | 240825-1    | PLATE, STRIP HOLD DOWN              | 23  |
| - | 2   | 2-22281-3   | SPRING, COMPRESSION                 | 22  |
| - | 1   | 1803292-4   | DRAG                                | 20  |
| - | 2   | 1901259-3   | GUIDE, LOWER STRIP                  | 18  |
| - | 1   | 2-240641-9  | SPACER                              | 16  |
| - | 1   | 1752360-1   | SPACER, HOLD-DOWN                   | 13  |
| - | 1   | 240833-1    | PLATE, REAR SHEAR                   | 11  |
| - | -   | -           | -                                   | 10  |
| - | 1   | 690482-4    | PLATE, FRONT SHEAR                  | 9   |
| 1 | 1   | 1333216-4   | ANVIL, COMBINATION                  | 8   |
| - | 1   | 1-2217206-0 | BLADE, SLUG                         | 7   |
| - | 1   | 5-240641-2  | SPACER                              | 5   |
| - | 1   | 238011-2    | BLOCK, CRIMPER SPACER               | 4   |
| 1 | 1   | 2-1633961-3 | CRIMPER, INSULATION F PREMIUM       | 3   |
| - | 1   | 455888-5    | SPACER, CRIMPER                     | 2   |
| 1 | 1   | 1-456405-5  | CRIMPER, WIRE PREMIUM               | 1   |

| DIMENSIONS: |         | TOLERANCES UNLESS OTHERWISE SPECIFIED: |         | DWN     |         | CHK      |          | APVD      |           | NAME      |  |
|-------------|---------|--|---------|---------|---------|----------|----------|-----------|-----------|-----------|--|
| mm          | 0 PLC ± | 1 PLC ±                                | 2 PLC ± | 3 PLC ± | 4 PLC ± | ANGLES ± | FINISH ± | 11JAN2012 | 11JAN2012 | 11JAN2012 | R. HUANG                               |
|             |         |  |         |         |         |          |          |           |           |           | S. XI                                  |
|             |         |  |         |         |         |          |          |           |           |           | I. CRUZ                                |
|             |         |  |         |         |         |          |          |           |           |           | TE Connectivity                        |
|             |         |  |         |         |         |          |          |           |           |           | Harrisburg, PA 17105-3608              |
|             |         |  |         |         |         |          |          |           |           |           | Ocean End Feed                         |
|             |         |  |         |         |         |          |          |           |           |           | Applicator                             |
|             |         |  |         |         |         |          |          |           |           |           | Customer Accessible Production Drawing |
|             |         |  |         |         |         |          |          |           |           |           | SCALE 1:1 SHEET 3 OF 4 REV D           |

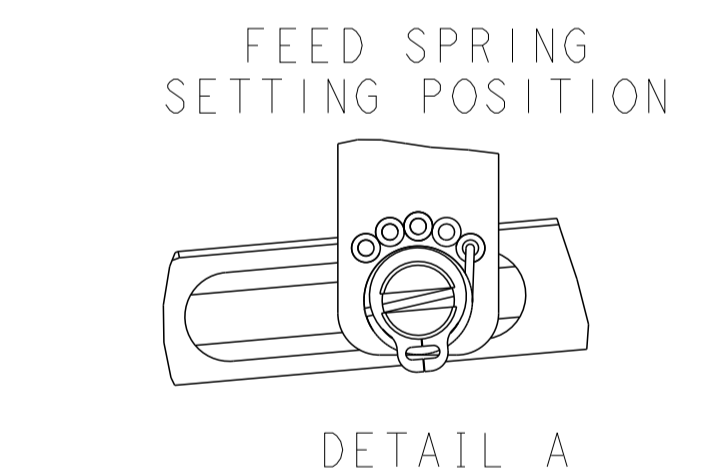
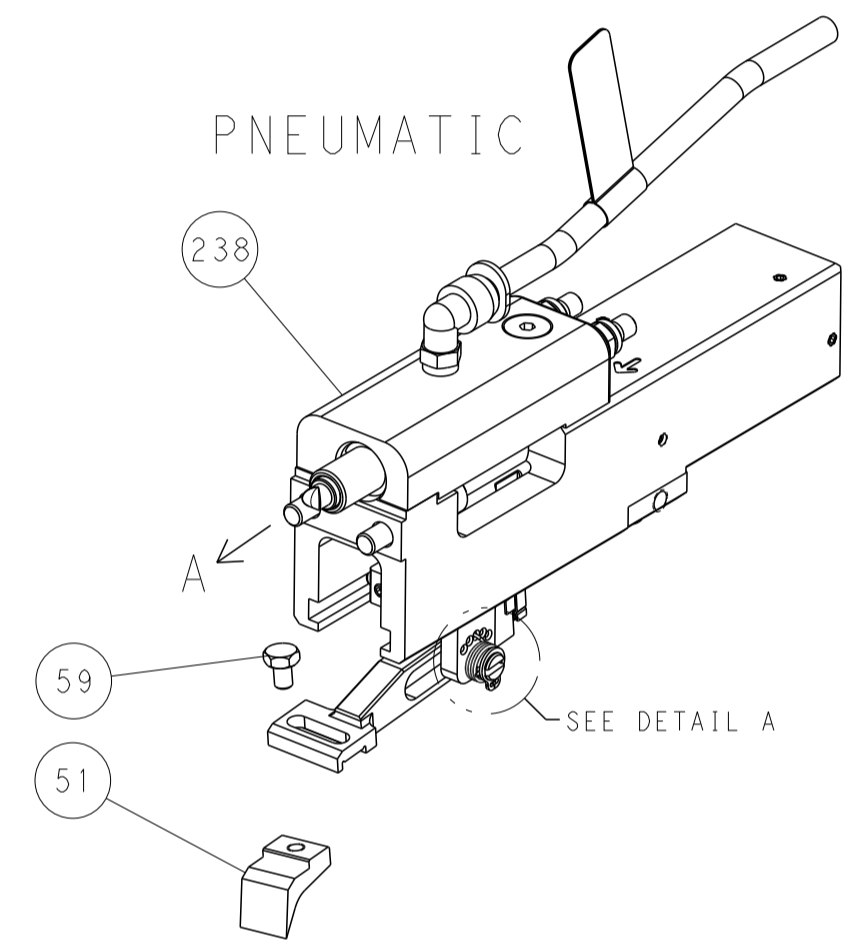
| LOC |    | DIST |     | REVISIONS   |      |     |      |
|-----|----|------|-----|-------------|------|-----|------|
| A   | 66 | P    | LTH | DESCRIPTION | DATE | DWN | APVD |
|     |    | -    |     | SEE SHEET 1 |      |     |      |



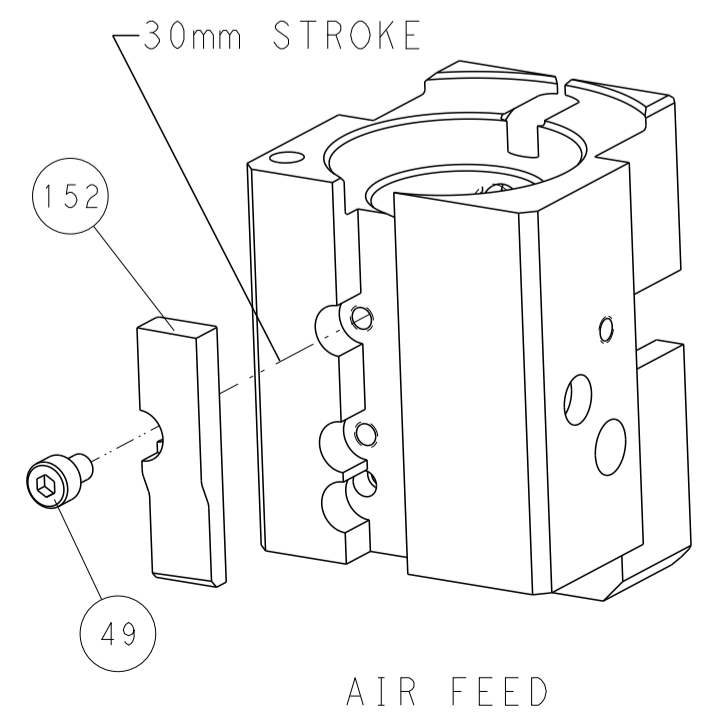
RAM AND HOLDDOWN SET-UP



FEED TYPE



CAM POSITION



PACIFIC VERSION  
 Shown on sheets 3 of 4 & 4 of 4  
 (Atlantic version shown on sheets 1 of 4 & 2 of 4)

|  |  |  |   |
|--|--|--|---|
| <small>THIS DRAWING IS UNPUBLISHED. RELEASED FOR PUBLICATION BY TYCO ELECTRONICS CORPORATION. ALL RIGHTS RESERVED.</small><br><small>THIS IS A PRODUCT OF COMPANY TO WHICH THE TYCO ELECTRONICS CORPORATION HAS BEEN ASSIGNED BY CONTRACT FOR THE LATEST POSITION.</small> |  | DWN: K. HUANG 11JAN2012<br>CHK: S. XI 11JAN2012<br>APVD: J. CRUZ 11JAN2012       | TE Connectivity<br>Harrisburg, PA 17105-3608                            |
| DIMENSIONS: mm<br>TOLERANCES UNLESS OTHERWISE SPECIFIED:<br>0 PLC ±<br>1 PLC ±<br>2 PLC ±<br>3 PLC ±<br>4 PLC ±<br>ANGLES ±<br>FINISH ±  |  | NAME: Ocean End Feed Applicator<br>PRODUCT SPEC:<br>APPLICATION SPEC:<br>WEIGHT: | SIZE: A1<br>CAGE CODE: 00779<br>DRAWING NO: C=2150040<br>RESTRICTED TO: |
| MATERIAL:  |  | SCALE: 1:1<br>SHEET: 4 of 4<br>REV: D  | Customer Accessible Production Drawing                                  |

# Mouser Electronics

Authorized Distributor

Click to View Pricing, Inventory, Delivery & Lifecycle Information:

[TE Connectivity:](#)

[7-2150040-7](#)