

**SAFETY ORGANIZATION(S).**

THIS FILTER HAS BEEN FORMALLY RECOGNIZED, CERTIFIED OR APPROVED BY THE LISTED AGENCY, THEREFORE, ALL TEST/REQUIREMENTS SPECIFIED IN THE LATEST REVISION OF THE FOLLOWING AGENCY STANDARDS HAVE BEEN MET.

- UL RECOGNIZED UL 1283
- CSA CERTIFIED CSA 22.2, NO.0.0.4,8
- VDE APPROVED VDE 565-3
- SEV APPROVED SEV 1055/TP1977/5.1.1

**OPERATING SPECIFICATIONS.**

- LINE VOLTAGE/CURRENT, 20 AMP., 120/250 VAC
- LINE FREQUENCY, 16 AMP./40°C, 250 VAC
- MAX. CASE RISE & RATED CURRENT, 50-60Hz
- MAX. LEAKAGE CURRENT, EACH 30°C
- LINE TO GROUND .25mA at 120V 50 Hz
- OPERATING AMBIENT TEMP. RANGE, .40 mA at 250V 50 Hz
- IN AN AMBIENT,  $I_o$ , HIGHER THAN 40°C, THE MAXIMUM OPERATING CURRENT,  $I_o$ , IS AS FOLLOWS,  $I_o = I_r \sqrt{\frac{95-I_o}{45}}$

**RELIABILITY SPECIFICATIONS.**

- STORAGE TEMPERATURE, -40°C TO +85°C
- HUMIDITY, 21 DAYS @ 40°C 95% RH
- CURRENT OVERLOAD TEST, 6 TIMES RATED CURRENT FOR 8 SECONDS

**TEST SPECIFICATIONS.**

- INDUCTANCE, .88 mH NOMINAL
- CAPACITANCE, (MEASURED @ 1 KHz, 0.25 VAC MAX., 25°C ±1°C) .006µF ±20%
- LINE TO GROUND, .301µF ±20%
- LINE TO LINE, 680KΩ
- DISCHARGE RESISTOR 6000 MΩ (MIN) AT 100 VDC
- INSULATION RESISTANCE 20°C AND 50% RH

**RECOMMENDED RECEIVING INSPECTION HIPOT.**

- LINE TO GROUND, 2250 VDC FOR 1 MINUTE
- LINE TO LINE, 1450 VDC FOR 1 MINUTE

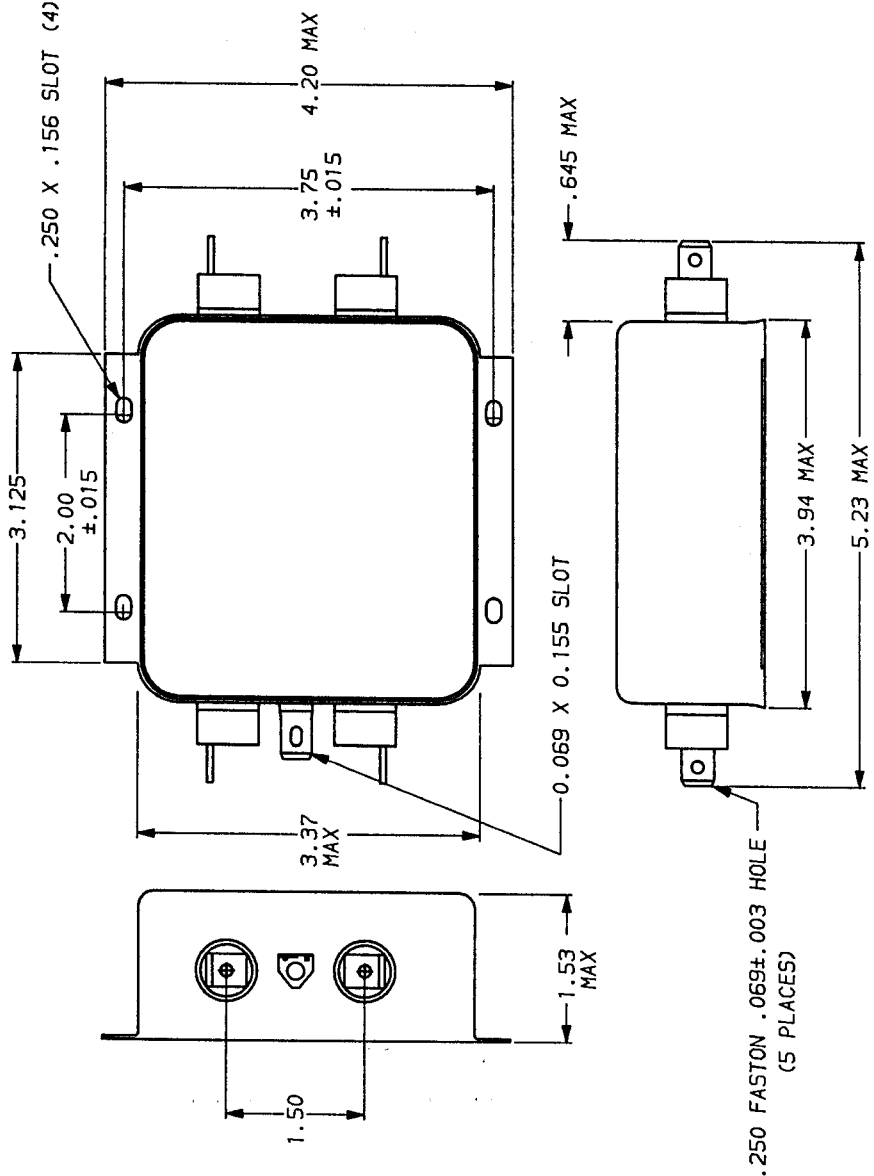
**FILTER APPROVAL.**

THE BEST WAY TO SELECT AND QUALIFY A FILTER IS FOR YOUR ENGINEERING TO TEST THE UNIT IN YOUR EQUIPMENT.

**50a - 50a (MINIMUM) INSERTION LOSS**

FREQUENCY MHz	.15	.3	.5	1	2	5	10	20	30
COMMON	2	21	36	56	65	65	60	54	50
DIFF. dB	2	3	2	55	65	65	65	55	50

This document is proprietary to CORCOM INC. and is not to be reproduced nor used for manufacturing purposes except on CORCOM's order or prior written consent.

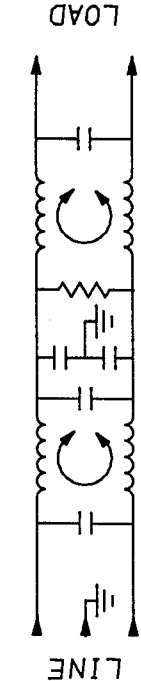


LIBERTYVILLE, IL 60048

**POWER LINE FILTER**

SCALE	DATE	ORG. NO.	REV.
NTS	9-12-89		20ER1.04
DRW. BY	TDL	ORIGINATOR	
	CW		

AS SUPPLIED  
 AS SUPPLIED



# Mouser Electronics

Authorized Distributor

Click to View Pricing, Inventory, Delivery & Lifecycle Information:

[TE Connectivity:](#)

[1-6609031-7](#)