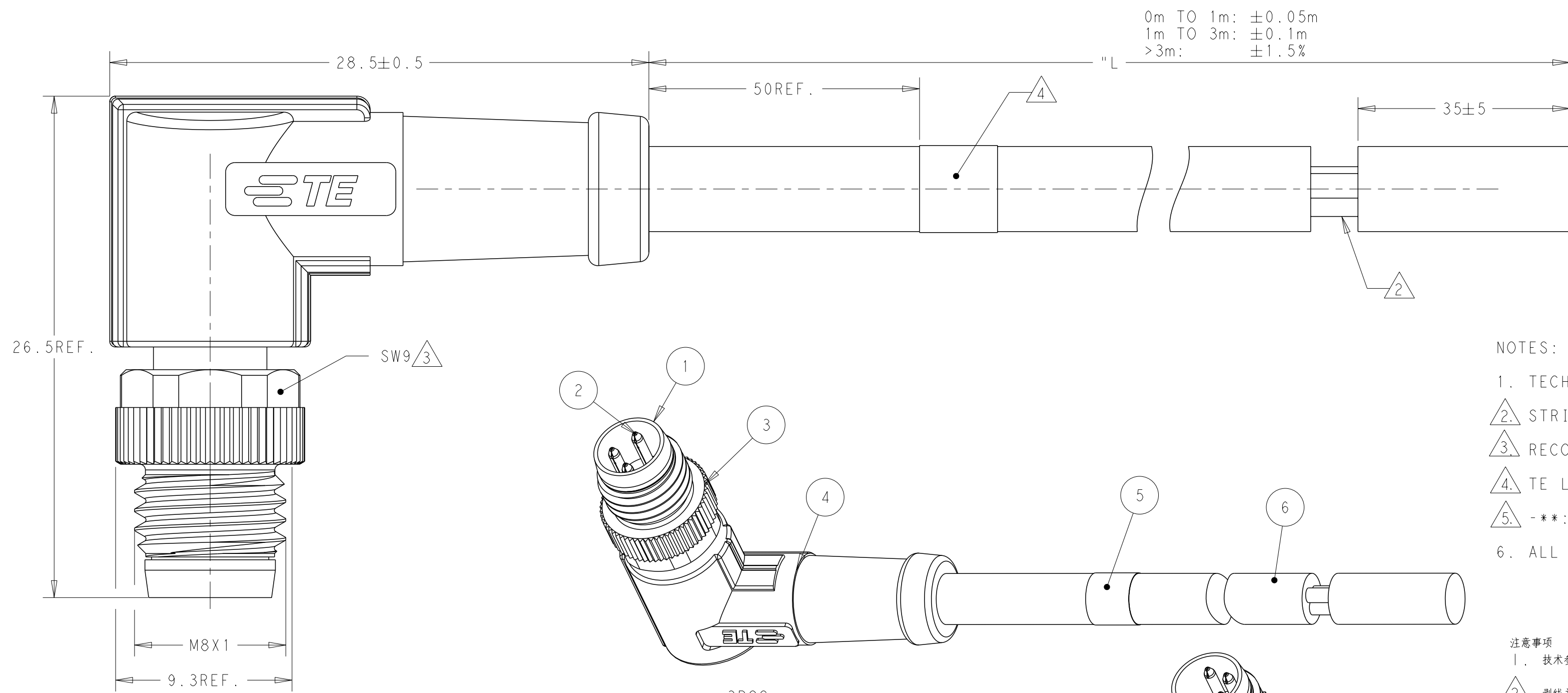


| REVISIONS | | | | | |
|-----------|-----|-------------------|-----------|------|------|
| P | LTR | DESCRIPTION | DATE | DWN | APVD |
| | A | INITIAL RELEASE | 18JAN2016 | N. P | X. X |
| | A1 | PER ECR-16-010253 | 21JUL2016 | N. P | X. X |
| | | | | | |
| | | | | | |

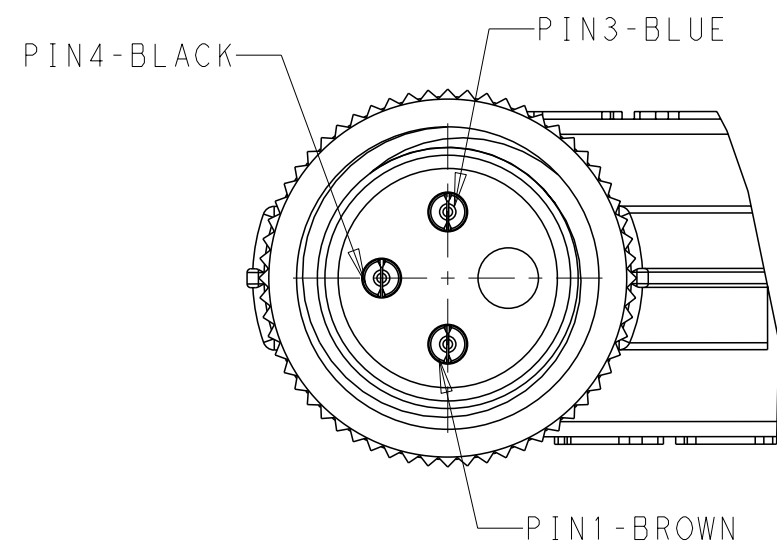


NOTES:

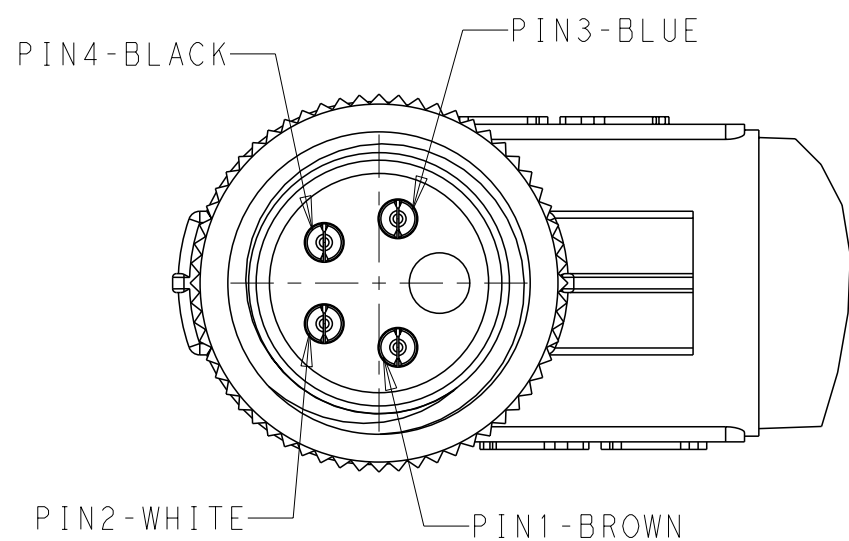
1. TECHNICAL DATA: SEE TABLE 1
2. STRIP AND RETAIN THE INSULATION
3. RECOMMEND TORQUE 0.4Nm
4. TE LABLE AREA.
5. -**: CABLE LENGHT. -0.5:0.5m, -1.0:1.0m, -1.5:1.5m...
6. ALL PRODUCT MUST COMPLIANCE WITH ROHS AND REACH.

注意事项

1. 技术参数:见表1
2. 剥线并保留绝缘层;
3. 推荐扭矩0.4Nm;
4. TE 标签位置;
5. - **线长: - 0.5 : 0.5m, - 1.0 : 1.0m, - 1.5 : 1.5m
6. 产品必须符合ROHS与REACH.







VIEW A
3POS.





VIEW A
4POS.

| | | | |
|-------------|--------------|--------------|------|
| - | - | CABLE | 6 |
| - | - | LABLE | 5 |
| BLUE COLOR | POLYURETHANE | OVER-MOLDING | 4 |
| - | COPPER ALLOY | COUPLING NUT | 3 |
| BALCK COLOR | PA66 | HOUSING | 2 |
| GOLD FLASH | COPPER ALLOY | CONTACT | 1 |
| COMMENTS | MATERIAL | DESCRIPITON | ITEM |

| | | | | | | | |
|---------------------------------------|--|--|--------------|-----------------|---|------|-----------------|
| WIRES: 0.25mm ² (24AWG) | STANDARD: -001: 0.5m -002: 1.0m -003: 1.5m -004: 3.0m -005: 5.0m -006: 7.0m -007: 10.0m CUSTOMIZATION: -**0:**.0m -**1:**.5m | FIXED: -40°C~80°C FLXIBLE: -25°C~80°C | GRAY | PUR (UL) | RPC-M8-MR-4CON-PUR-**  | 4 | T4051220004-00X |
| | | | | | RPC-M8-MR-3CON-PUR-**  | 3 | T4051220003-00X |
| | | FIXED: -10°C~80°C FLXIBLE: -5°C~80°C | BLACK | PVC (UL) | RPC-M8-MR-4CON-PVC-**  | 4 | T4051210004-00X |
| | | | | | RPC-M8-MR-3CON-PVC-**  | 3 | T4051210003-00X |
| CABLE CHARACTERISTIC | LENGTH "L" | CABLE TEMP. RANGE | JACKET COLOR | JACKET MATERIAL | TYPE | POS. | PART NUMBER |

| | | |
|----------------------|-----------------|-----------------|
| TECHNICAL DATA | T40512X0003-00X | T40512X0004-00X |
| RATED VOLTAGE | 60V | 30V |
| RATED CURRENT | 3A | |
| POLLETION DEGREE | 3 | |
| OVERVOLTAGE CATEGORY | II | |
| MATERIAL GROUP | II | |
| DEGREE OF PROTECTION | IP67 | |

| | | | | | |
|--|--|---|--|---|--|
| THIS DRAWING IS A CONTROLLED DOCUMENT. | | DWN 02DEC2015 Nick Pan CHK 02DEC2015 Kobby Zhao APVD 02DEC2015 Xiang Xu PRODUCT SPEC 108-106140 APPLICATION SPEC - | |  TE Connectivity | |
| DIMENSIONS: mm  | | TOLERANCES UNLESS OTHERWISE SPECIFIED: 0 PLC ± - 1 PLC ± 0.35 2 PLC ± 0.25 3 PLC ± 4 PLC ± ANGLES ± - MATERIAL TBD FINISH - | | NAME M8 CABLE RIGHT ANGLE SINGLE ENDED MALE SIDE, UNSHIELDED | |
| | | WEIGHT - | | SIZE A2 | |
| | | CAGE CODE - | | DRAWING NO T40512X000X00X | |
| | | RESTRICTED TO - | | SCALE 2:1 SHEET 1 OF 1 REV A1 | |
| | | CUSTOMER DRAWING | | | |

Mouser Electronics

Authorized Distributor

Click to View Pricing, Inventory, Delivery & Lifecycle Information:

[TE Connectivity:](#)

[T4051220004-001](#)