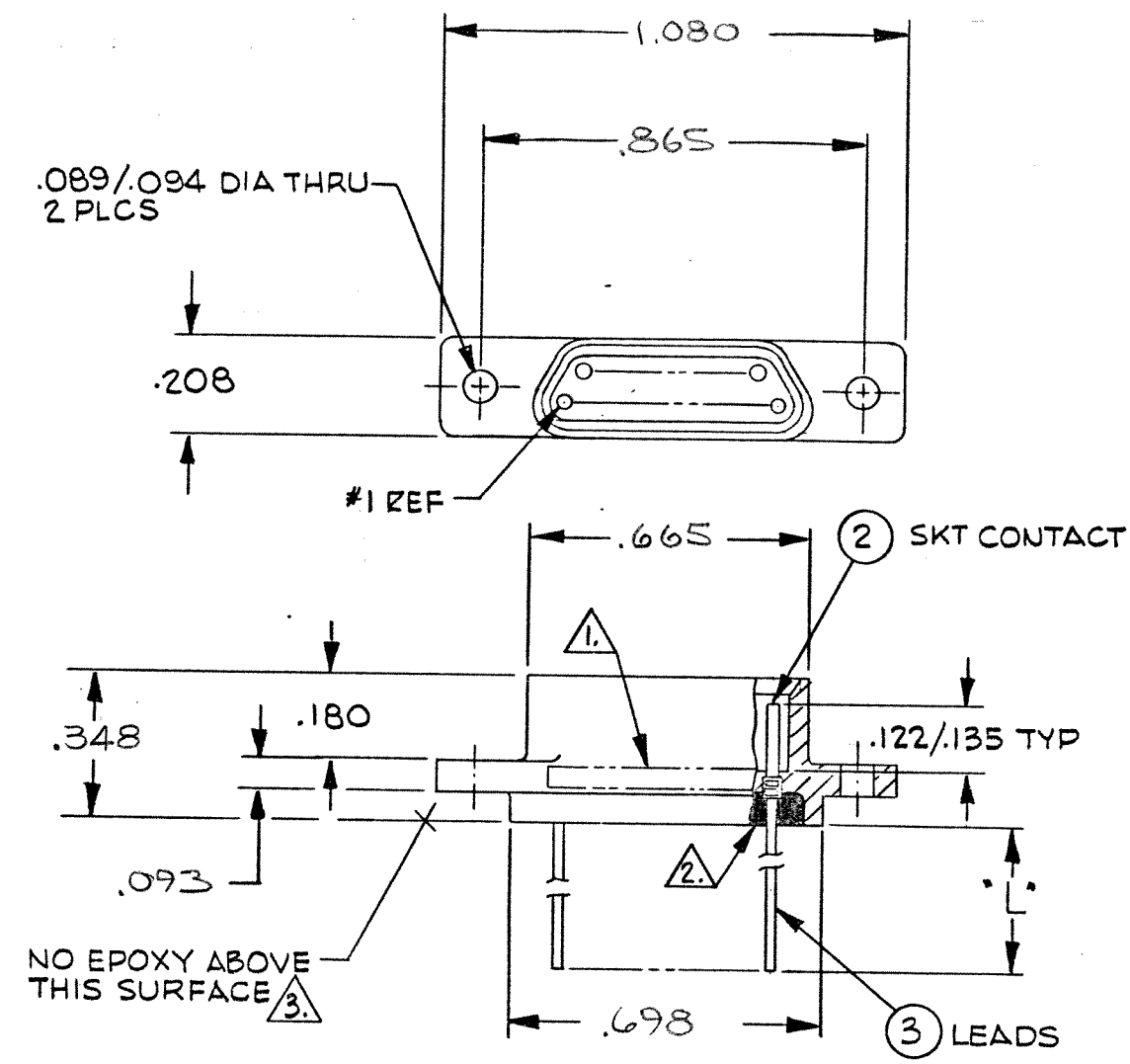


D

C

B

A



NO EPOXY ABOVE THIS SURFACE (3)

NOTES:

1. MARK "MALCO" OR MALCO LOGO PART NO. & DATE CODE WITH .047 MIN. HIGH CHARACTERS IN APPROX LOCATION SHOWN
2. EPOXY AS SHOWN WITH HYSOL # 4215 AND # 3561
3. EPOXY WICKING FROM THE REAR OF THE INSULATOR ON INSULATED LEADS MUST NOT EXCEED .125 MAX ON # 25 AWG AND SMALLER LEADS AND .200 MAX ON # 24 AWG AND LARGER LEADS
4. CRIMP LEADS INTO CONTACTS PER MEP 302-05

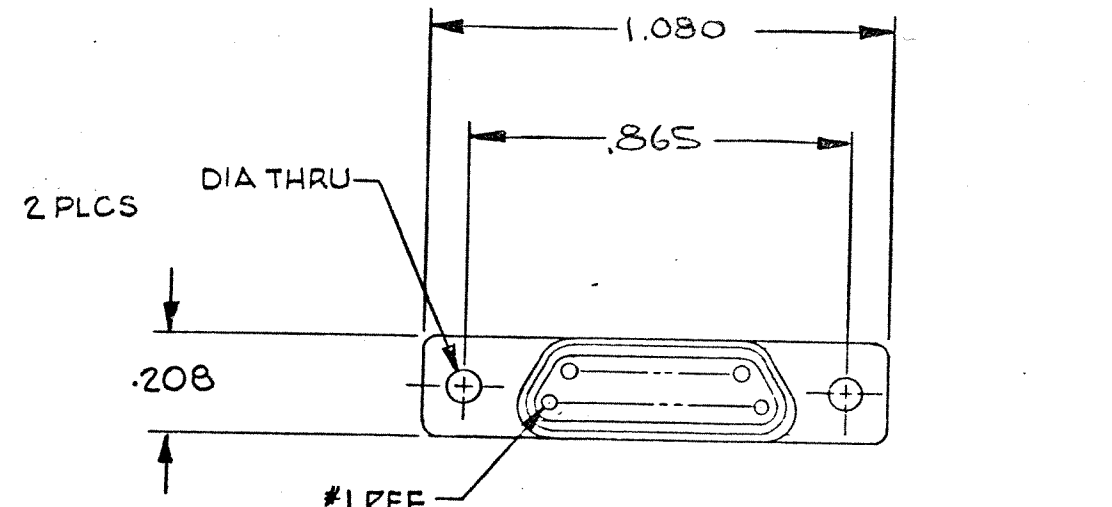
REVISIONS					
ZONE	LTR	ECO	DESCRIPTION	DATE	APPROVED
	A	19891	RELEASED 7-8-75	9-10-75	
	B	22363	DIM: 15: .348 WAS: .365 NOTE 4: WAS: CONTACTS PER DWG 096-0000-0024	8-5-77	

Tyco Dwg 8-1532148-7
Micro P/N 095-0000-0328

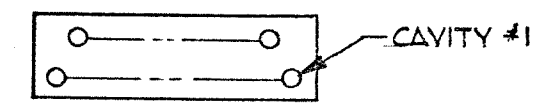
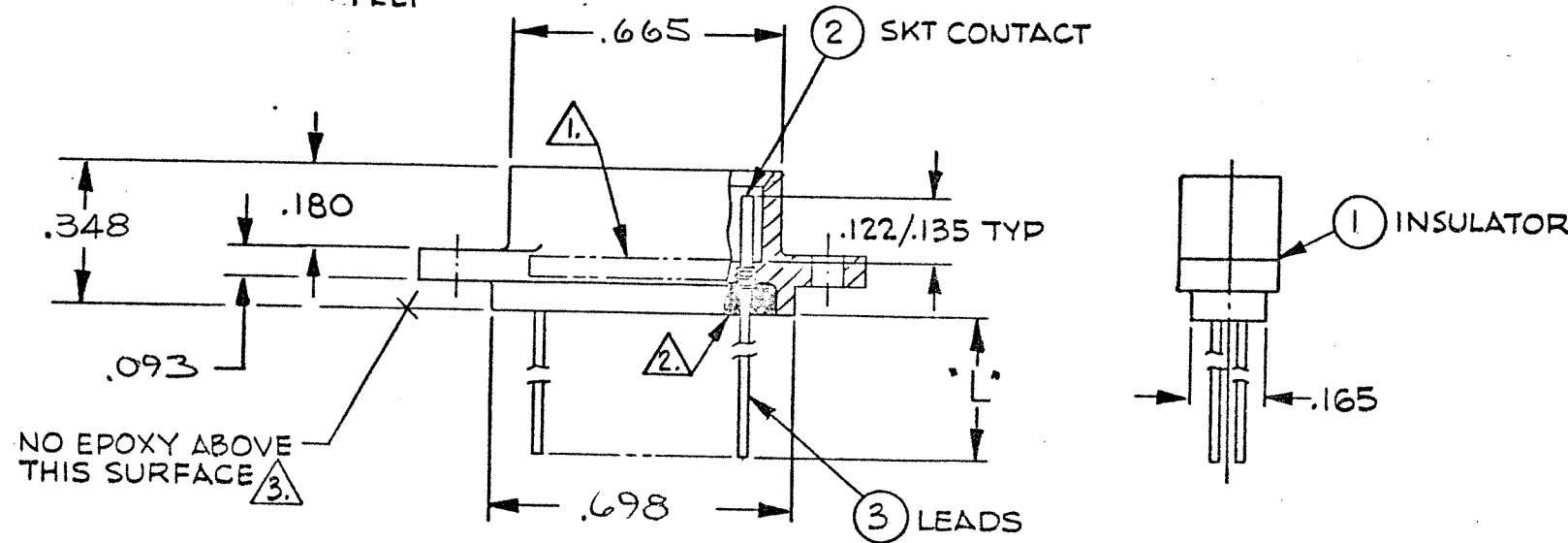
QTY REQD	CODE IDENT	PART OR IDENTIFYING NO.	NOMENCLATURE OR DESCRIPTION	
PARTS LIST				
UNLESS OTHERWISE SPECIFIED DIMENSIONS ARE IN INCHES TOLERANCES ARE: FRACTIONS DECIMALS ANGLES ± 1/64 .XX ± .01 ± 0°-30' .XXX ± .005			CONTRACT NO.	
MATERIAL			APPROVALS DATE	
FINISH			DRAWN M. J. D. 7-8-75	
NEXT ASSY USED ON			CHECKED P. 8-5-77	
APPLICATION			PR. ENG. 8-5-77	
DO NOT SCALE DRAWING			APPD. 8-5-77	
			These drawings and specifications are the property of Microdot Inc., are issued in strict confidence and shall not be divulged, be reproduced or copied, or used as the basis for the manufacture or sale of any article without written permission of Microdot Inc.	
			MALCO A MICRODOT COMPANY, INC. 220 PASADENA AVE., SO. PASADENA, CALIF. 91030	
			RACK AND PANEL CONN. MCDG3-215	
			SCREW MOUNTING	
			PROD. CODE 824	
			CODE M	
			SIZE B	
			CODE IDENT NO. 98278	
			DRAWING NO. 095-0000-0328	
			SCALE NONE	
			SHEET 1 OF 1	

REVISIONS					
ZONE	LTR	ECN	DESCRIPTION	DATE	APPROVED
	B	29185	NEW RELEASE	12/11/84	

D



C



REAR VIEW OF SKT CAVITY LAYOUT

NOTES:

B

- MARK "MALCO" OR MALCO LOGO PART NO. & DATE CODE WITH .047 MIN. HIGH CHARACTERS IN APPROX LOCATION SHOWN
- EPOXY AS SHOWN WITH HYSOL # 4215 AND # 3561
- EPOXY WICKING FROM THE REAR OF THE INSULATOR ON INSULATED LEADS MUST NOT EXCEED .125 MAX ON # 25 AWG AND SMALLER LEADS AND .200 MAX ON # 24 AWG AND LARGER LEADS
- CRIMP LEADS INTO CONTACTS PER MEP 302-05

8-1532148-7

SHT. 50 OF 52

A

QTY REQD	CODE IDENT	PART OR IDENTIFYING NO.	NOMENCLATURE OR DESCRIPTION
PARTS LIST			
UNLESS OTHERWISE SPECIFIED DIMENSIONS ARE IN INCHES TOLERANCES ARE:		CONTRACT NO.	
FRACTIONS ± 1/64	DECIMALS .XX ± .01 .XXX ± .005	ANGLES ± 0°-30'	
MATERIAL		APPROVALS	DATE
		DRAWN C.T.	12-21-84
		CHECKED	12-21-84
		PR. ENG.	12-21-84
		APPD.	
FINISH		MALCO A MICRODOT COMPANY, INC. 220 PASADENA AVE., SO. PASADENA, CALIF. 91030	
		RACK AND PANEL CONN. MCDGB-21S SCREW MOUNTING CFA 101-142 PARA. 10	
NEXT ASSY		SIZE	CODE IDENT NO.
USED ON		B	98278
APPLICATION		DRAWING NO.	095-0000-0328
DO NOT SCALE DRAWING		SCALE NOTE	

Mouser Electronics

Authorized Distributor

Click to View Pricing, Inventory, Delivery & Lifecycle Information:

[TE Connectivity:](#)

[9-1532021-5](#)