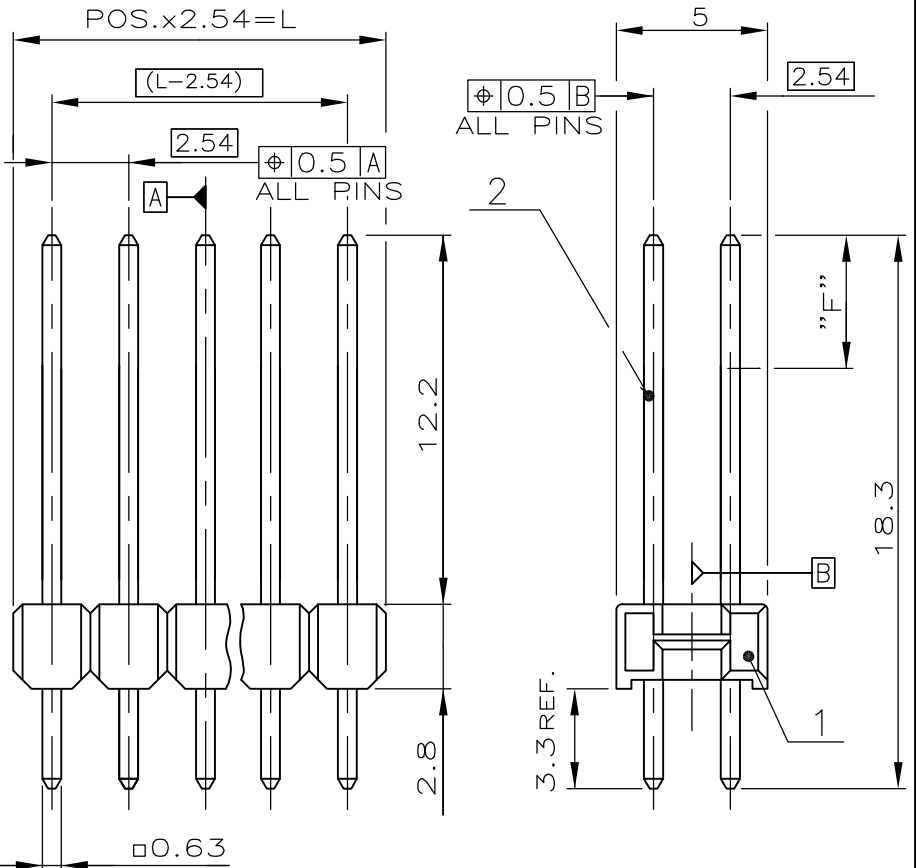


LOC	DIST	REVISIONS		
—	—	P	LTR	DESCRIPTION
				DATE
				DWN
				APVD
		D		CONTACT PIN BASE MATERIAL AND PLATING CHANGE
				03JUL2014
				KJK
				JK

POS. PER ROW	L±0.4	PART NUMBER
—	—	—
2	5.08	△ 2
3	7.62	△ 3
4	10.16	△ 4
5	12.70	△ 5
6	15.24	828 080 -6
7	17.78	△ 7
8	20.32	828 080 -8
9	22.86	△ 9
10	25.40	1- 828 080 -0
11	27.94	1- 828 080 -1
12	30.48	△ 1- 2
13	33.02	△ 1- 3
14	35.56	△ 1- 4
15	38.10	△ 1- 5
16	40.64	△ 1- 6
17	43.18	△ 1- 7
18	45.72	1- 828 080 -8
19	48.26	1- 828 080 -9
20	50.80	△ 2- 0
21	53.34	2- 828 080 -1
22	55.88	2- 828 080 -2
23	58.42	2- 828 080 -3
24	60.96	2- 828 080 -4
25	63.50	2- 828 080 -5
26	66.04	2- 828 080 -6
27	68.58	2- 828 080 -7
28	71.12	2- 828 080 -8
29	73.66	2- 828 080 -9
30	76.20	△ 3- 0
31	78.74	3- 828 080 -1
32	81.28	△ 3- 2
33	83.82	3- 828 080 -3
34	86.36	3- 828 080 -4
35	88.90	3- 828 080 -5
36	91.44	△ 3- 6
37	93.98	3- 828 080 -7
38	96.52	3- 828 080 -8
39	99.06	3- 828 080 -9
40	101.60	△ 4- 0
41	104.14	4- 828 080 -1
42	106.68	4- 828 080 -2
43	109.22	4- 828 080 -3
44	111.76	4- 828 080 -4
45	114.30	4- 828 080 -5
46	116.84	4- 828 080 -6
47	119.38	4- 828 080 -7
48	121.92	4- 828 080 -8
49	124.46	4- 828 080 -9
50	127.00	5- 828 080 -0



△ MATING SIDE: MIN. 0.7µm PdNi + MIN. 0.1µm Au FLASH BY AREA F OVER 1.27µm Ni  
 SOLDER SIDE: MIN. 2.5µm TIN OVER 1.27µm Ni

△ OBSOLETE

CONTACT PIN	CuZn	△	2
PIN HOUSING	PBT	GREEN	1
DESCRIPTION	MATERIAL	FINISH COLOR /	ITEM NUM

RELEASED FOR PUBLICATION

ALL RIGHTS RESERVED.

By -

COPYRIGHT

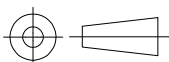
THIS DRAWING IS UNPUBLISHED.

DIMENSIONS:

mm

TOLERANCES UNLESS OTHERWISE SPECIFIED:  
±0.2mm

0 PLC	± -
1 PLC	± -
2 PLC	± -
3 PLC	± -
4 PLC	± -
ANGLES	± -



DWN	G.HOLAUS	31.08.89	MATERIAL	SEE TABLE	FINISH	-
CHK	M.SCHAARSCHMIDT	07.02.90				
APVD	-	-				
PRODUCT SPEC	108-18012		NAME	AMPMODU II PIN HEADER, DUAL ROW		
APPLICATION SPEC	-		SIZE	CAGE CODE	DRAWING NO	RESTRICTED TO
WEIGHT	-		A4	00779	C-828080	-
CUSTOMER DRAWING				SCALE	4:1	SHEET 1 OF 1
						REV D

# Mouser Electronics

Authorized Distributor

Click to View Pricing, Inventory, Delivery & Lifecycle Information:

[TE Connectivity:](#)

[2-828080-4](#)