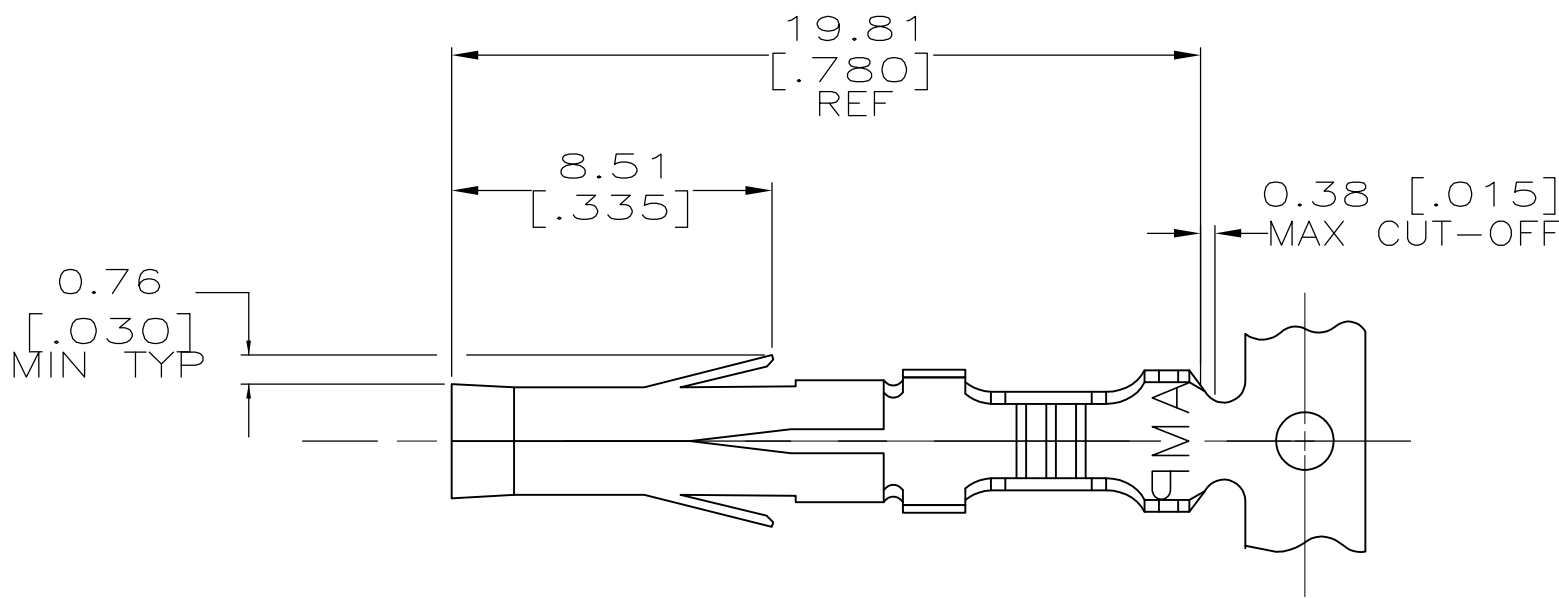
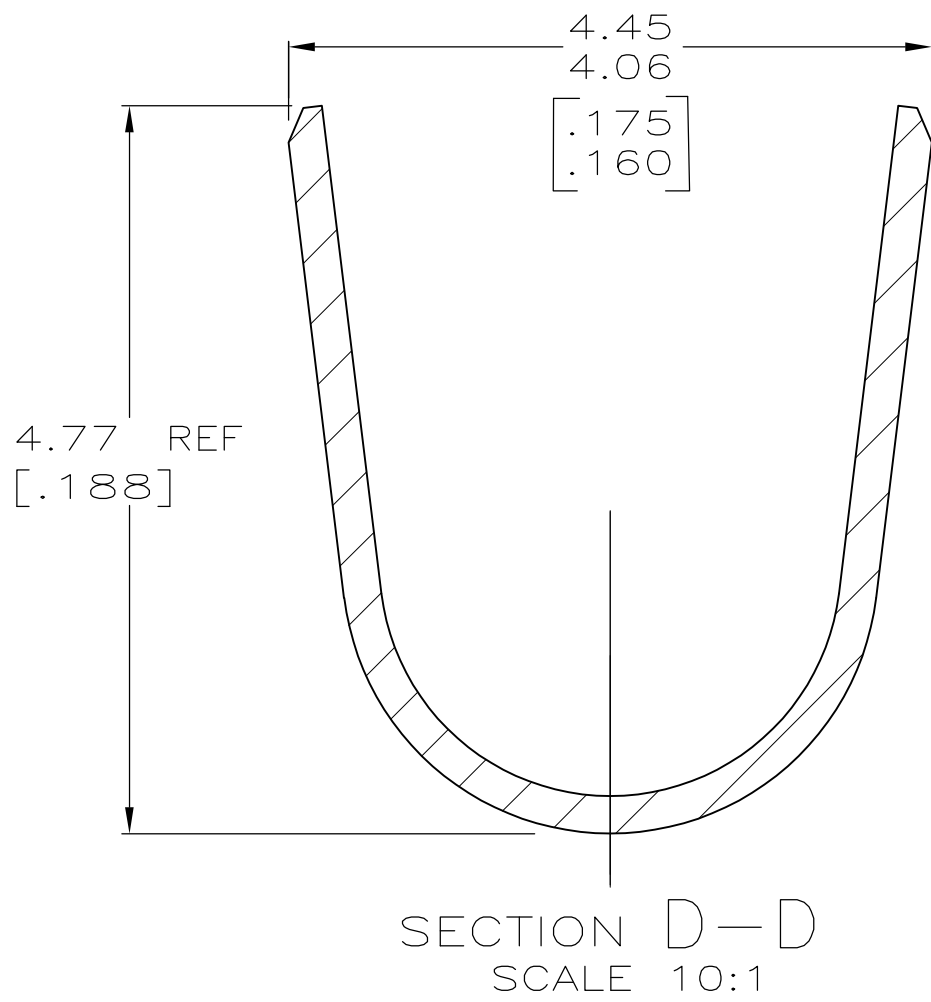
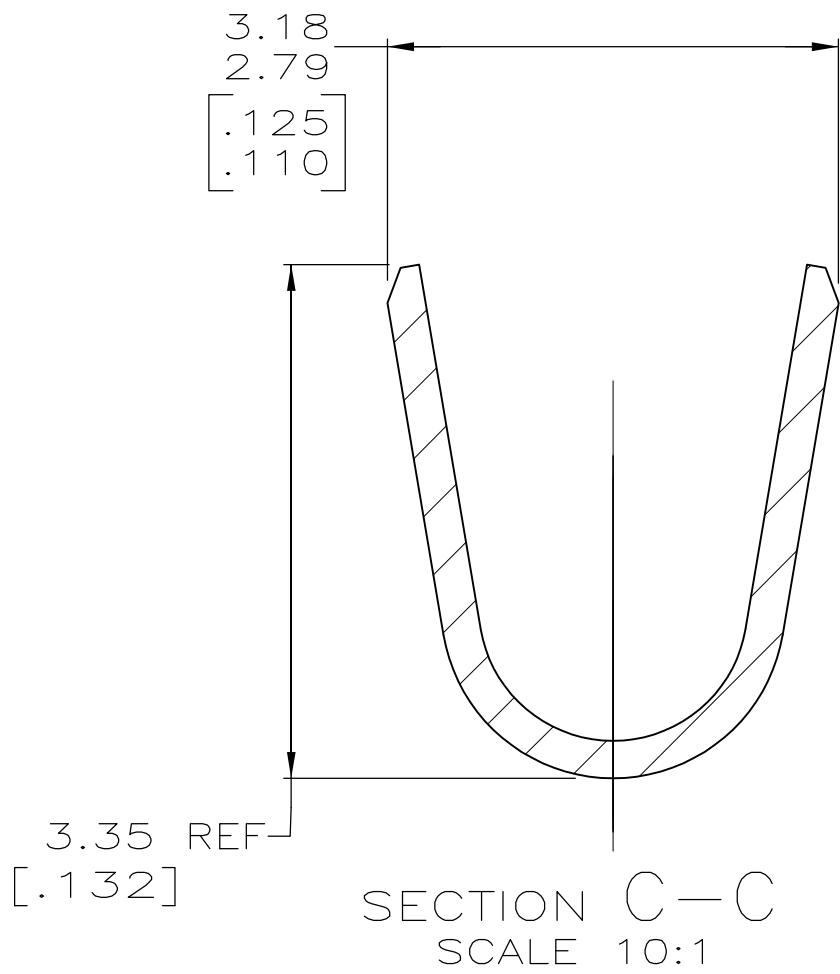
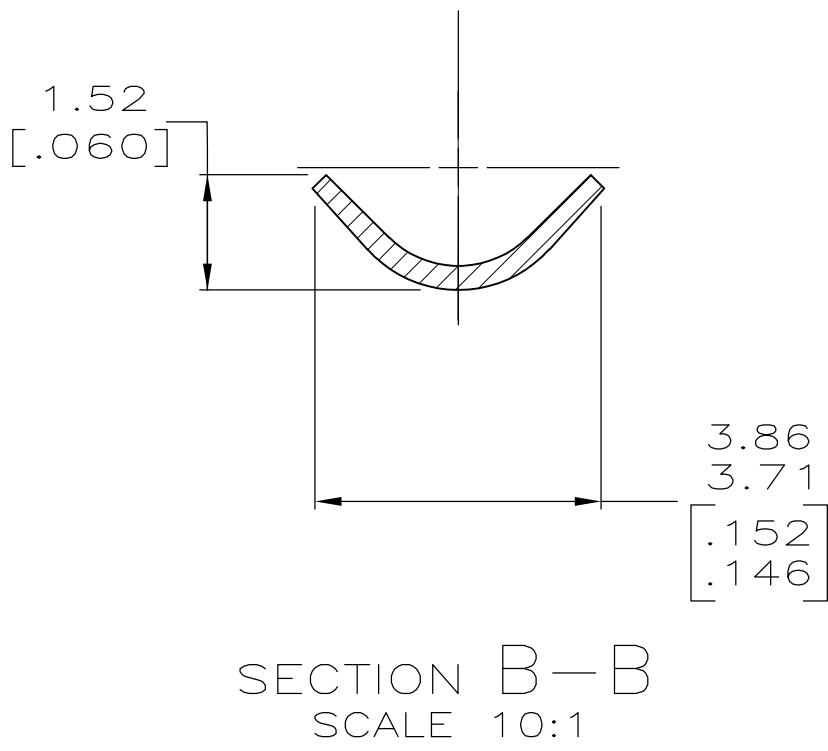
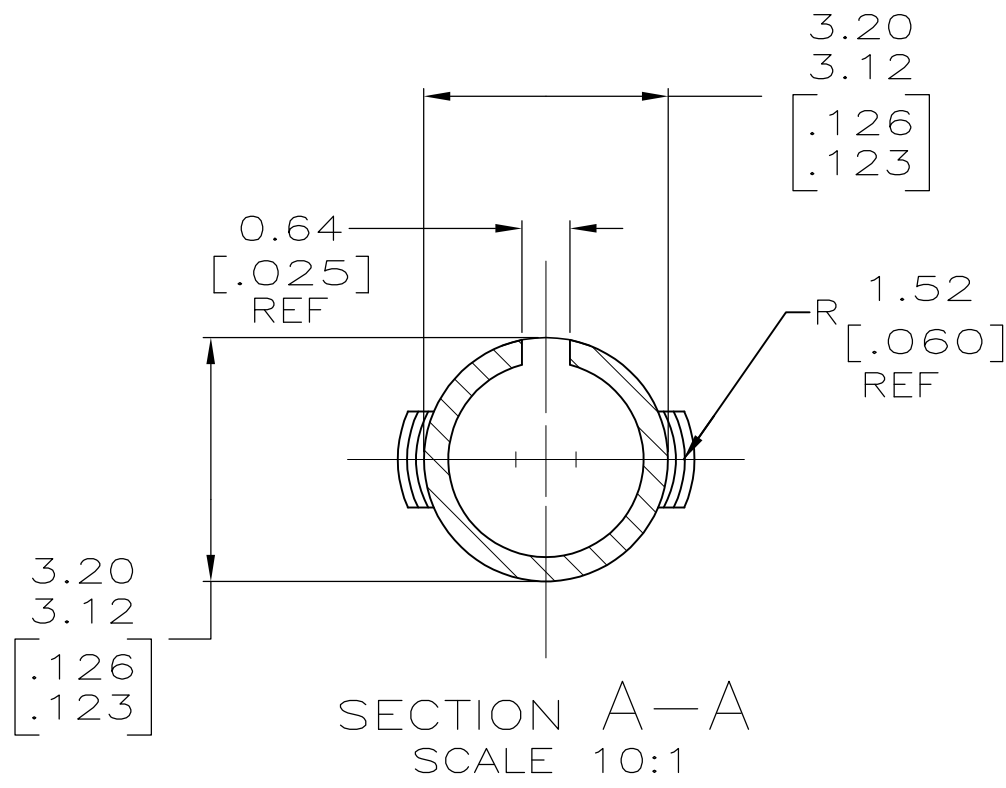
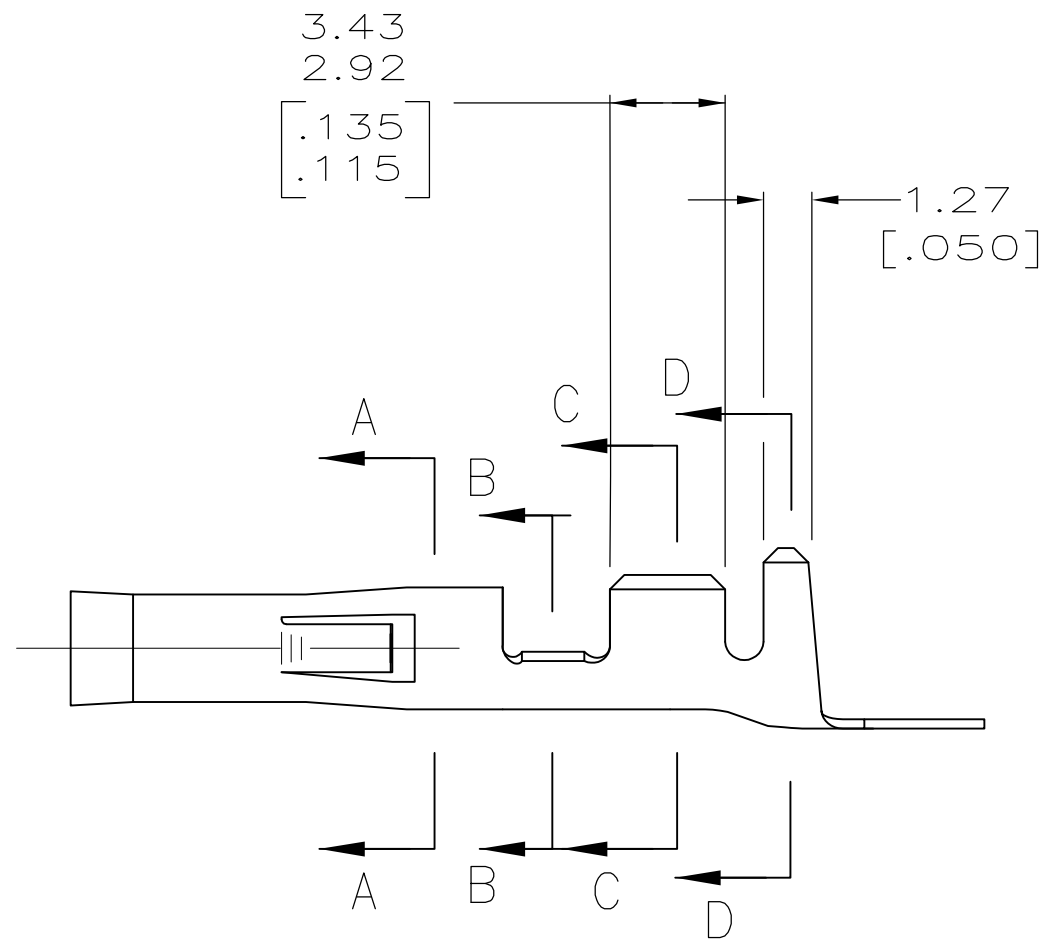
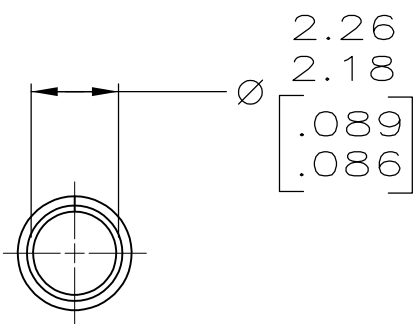


LOC	DIST	REVISIONS				
		REV	LTR	DESCRIPTION	DATE	DWN
CM	0					
		AL2		REVISED PER ECR-18-002042	09FEB2018	BDA JB



- 1 WIRE RANGE: 0.5–2mm² (20–14 AWG).
- 2 INSULATION RANGE: 3.56 [.140] MAX. DIA.
- 3 DIMENSIONS IN BRACKETS ARE IN INCHES.
- 4 0.00076 [.000030] MIN GOLD STRIPE OVER 0.00127 [.000050] MIN NICKEL ON INSIDE OF SOCKET.
- 5 .00127 [.000050] MIN NICKEL



PRELIMINARY PART NUMBER NOT IN PRODUCTION	5	0.25 [.010] PHOS BRZ	350415–8
	PRE–TIN	0.25 [.010] PHOS BRZ	350415–6
	4	0.25 [.010] BRASS	350415–5
	PRE–TIN	0.25 [.010] BRASS	350415–1
	FINISH	MATERIAL	PART NO

THIS DRAWING IS A CONTROLLED DOCUMENT.		DWN K. WHITAKER 22NOV2005	TE Connectivity	
DIMENSIONS: mm [INCHES]		CHK D. COLEY 22NOV2005		
	TOLERANCES UNLESS OTHERWISE SPECIFIED:	APVD D. COLEY 22NOV2005	NAME	
		PRODUCT SPEC	.093 SOCKET COMMERICAL PIN AND SOCKET	
	ANGLES	APPLICATION SPEC	—	
		WEIGHT	—	
MATERIAL SEE TABLE	FINISH SEE TABLE	SIZE CAGE CODE DRAWING NO	RESTRICTED TO	
CUSTOMER DRAWING		SCALE 5:1	SHEET 1 OF 1	REV AL2

Mouser Electronics

Authorized Distributor

Click to View Pricing, Inventory, Delivery & Lifecycle Information:

[TE Connectivity:](#)

[350415-5](#)