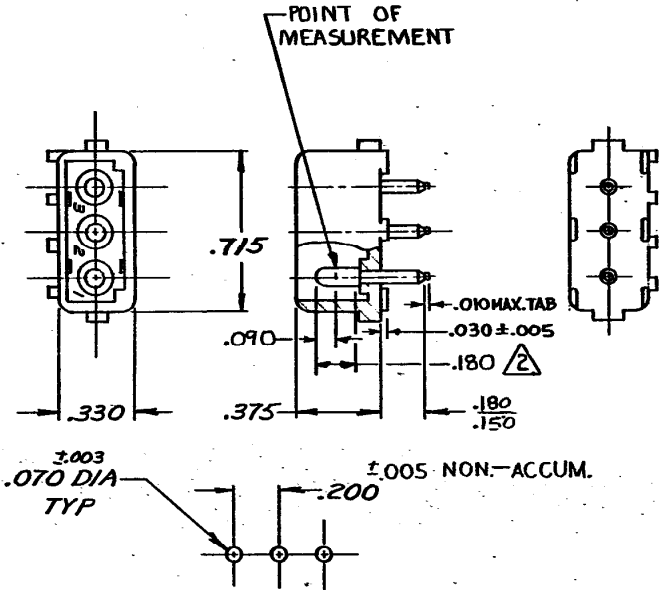


WAS P-72-6198



RECOMMENDED LAYOUT FOR
 .062 THICK P.C. BOARD

1. PARTS COMPLY WITH TE SOLDERABILITY SPEC. NO. 109-11-3

2. CONTACT IS PLATED OVERALL WITH .000050 NICKEL, THEN .000030 GOLD OVER CONTACT LENGTH INDICATED AND TIN PLATED ON SOLDER TAIL END.

SUPERSEDED BY
 1586514-2

ASSEMBLY NO.	HSG. MATL & COLOR	PIN MATL & FINISH
350210-2	NYLON NATURAL	COPPER ALLOY - GOLD
350210-1	NYLON - NATURAL	COPPER ALLOY - PRETIN

Unpublished copy not to be re-released nor published without the permission of AXP Incorporated

LTR	REVISION RECORD	DR	CHK	DATE
T3	REVISED PER ECR-18-008156	JB	DZ	19 JUN 2018
T2	REVISED PER ECR-13-008342	AV	RP	12 NOV 2013
T1	REVISED PER ECO-11-005294	RK	HMR	07 APR 11

QTY	DESCRIPTION
1	350210

DR	4-12-73 9. Edwards	MATERIAL AND FINISH	SEE TABLE	TE Connectivity CLASS .084 DIA. PIN TYPE PIN HEADER	
CHK	1/12/13 DA Pelton/Average	WIRE - RANGE - INSULATION	-1-1-1	TOLERANCE EXCEPT AS NOTED	SCALE -H-
DE	Thomblee 4-13-73	LOC	B	NO	350210
APP	Thomblee 4-13-73	NAME	3 CIRCUIT MATE-N-LOK P.C. BOARD HEADER		

DIMENSIONS IN INCHES, DO NOT SCALE PRINT.

Mouser Electronics

Authorized Distributor

Click to View Pricing, Inventory, Delivery & Lifecycle Information:

[TE Connectivity:](#)

[350210-1](#)