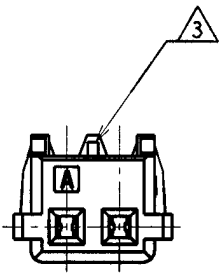
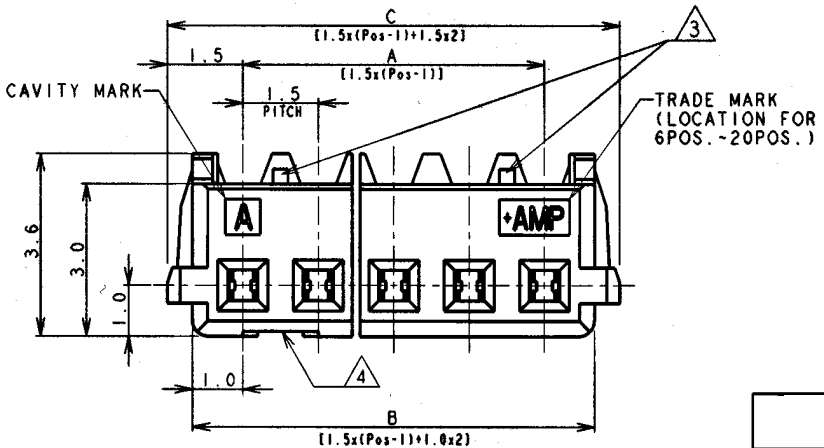
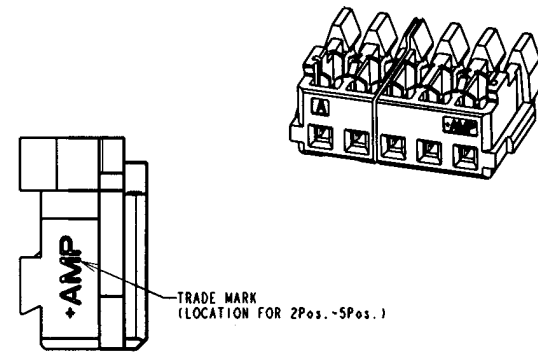
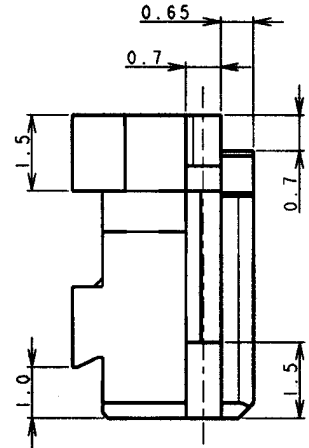
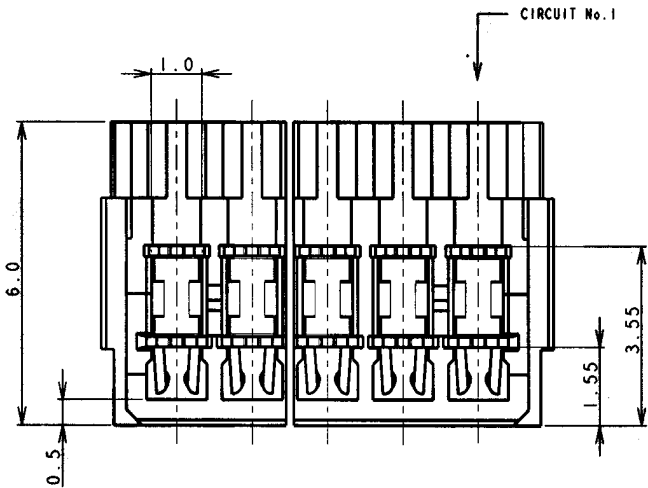


THIS DRAWING IS UNPUBLISHED. RELEASED FOR PUBLICATION. ALL RIGHTS RESERVED.

LOC	DIST	REVISIONS					
ES	00	P	LTR	DESCRIPTION	DATE	DWN	APVD
		B1		REVISED PER ECO-11-005033	16APR11	RK	HMR



- NOTES:
1. APPLICABLE WIRE SIZE: AWG #26
INSULATION DIA RANGE: $\varnothing 0.8\text{mm} - \varnothing 0.95\text{mm}$
 2. MATERIAL:
HOUSING: NYLON (G.F.) UL94V-0, COLOR: GRAY, BLUE
CONTACT: PHOS-BRONZE
PRE-PLATING: SELECTED GOLD PLATING 0.38um MIN
OVER NICKEL 1.27um MIN UNDER PLATED ALL OVER
 3. HOUSING LOCK:
2 POSITION - SINGLE LOCK
3 TO 20 POSITION - DOUBLE LOCK
 4. CONNECTOR HAVE THE GATE LEFT SIDE AND RIGHT SIDE (EXCEPT 2 POSITION).

WIRE RANGE	INSULATION DIA
$0.08\text{mm}^2 - 0.14\text{mm}^2$	$\varnothing 0.8\text{mm} - \varnothing 0.95\text{mm}$

TOLERANCES UNLESS OTHERWISE SPECIFIED:

10 >	: ±0.2
30 > * > 10	: ±0.25
100 > * > 30	: ±0.3
ANGLE	: ±3°

DIMENSIONS: mm		TOLERANCES UNLESS OTHERWISE SPECIFIED:		DWN	02JUN2003	TE TE Connectivity		
		0 PLC ±	1 PLC ±0.1	CHK	02JUN2003			
MATERIAL SEE NOTE		2 PLC ±0.01	3 PLC ±0.001	APVD	02JUN2003	NAME MT RECEPTACLE ASSEMBLY (GOLD-PLATING) FOR AMP Mini Common Terminated (CT) Connector 1.5mm PITCH		
FINISH SEE NOTE		4 PLC ±0.0001	ANGLES ±	PRODUCT SPEC	108-60018			
				APPLICATION SPEC	114-5223	SIZE	CAGE CODE	DRAWING NO
				WEIGHT	SEE TABLE	A3	00779	©=292271
				CUSTOMER DRAWING		SCALE	NON	SHEET 1 OF 2
								REV B1

LOC		DIST		REVISTONS	
ES 00		P	LTR	DESCRIPTION	DATE
					DWN
					APVD

0.97	31.5	30.5	28.5	20	7-292271-0	2-292271-0
0.92	30.0	29.0	27.0	19	6-292271-9	1-292271-9
0.87	28.5	27.5	25.5	18	6-292271-8	1-292271-8
0.83	27.0	26.0	24.0	17	6-292271-7	1-292271-7
0.78	25.5	24.5	22.5	16	6-292271-6	1-292271-6
0.73	24.0	23.0	21.0	15	6-292271-5	1-292271-5
0.68	22.5	21.5	19.5	14	6-292271-4	1-292271-4
0.64	21.0	20.0	18.0	13	6-292271-3	1-292271-3
0.59	19.5	18.5	16.5	12	6-292271-2	1-292271-2
0.54	18.0	17.0	15.0	11	6-292271-1	1-292271-1
0.49	16.5	15.5	13.5	10	6-292271-0	1-292271-0
0.45	15.0	14.0	12.0	9	5-292271-9	292271-9
0.40	13.5	12.5	10.5	8	5-292271-8	292271-8
0.35	12.0	11.0	9.0	7	5-292271-7	292271-7
0.30	10.5	9.5	7.5	6	5-292271-6	292271-6
0.26	9.0	8.0	6.0	5	5-292271-5	292271-5
0.21	7.5	6.5	4.5	4	5-292271-4	292271-4
0.16	6.0	5.0	3.0	3	5-292271-3	292271-3
0.11	4.5	3.5	1.5	2	5-292271-2	292271-2
WEIGHT (g)	C	B	A	Pos.	BLUE	GRAY
	DIMENSIONS				P/N	


THIS DRAWING IS UNPUBLISHED.

RELEASED FOR PUBLICATION

19

ALL RIGHTS RESERVED.

© COPYRIGHT

DIMENSIONS:		MATERIAL		FINISH	
mm					
TOLERANCES UNLESS OTHERWISE SPECIFIED:					
0 PLC	±				
1 PLC	±0.1				
2 PLC	±0.01				
3 PLC	±0.001				
4 PLC	±0.0001				
ANGLES	±				
DWN		MATERIAL		FINISH	
CHK					
APVD					
PRODUCT SPEC					
APPLICATION SPEC					
WEIGHT					
CUSTOMER DRAWING					
SCALE		NON		SHEET 2 OF 2	
REV		B1			
NAME		 TE Connectivity			
MT REC ASSY (GOLD-PL.)					
FOR AMP MINI CT 1.5mm PITCH CONN.					
SIZE	CAGE CODE	DRAWING NO			
A4	00779	C-292271			



Mouser Electronics

Authorized Distributor

Click to View Pricing, Inventory, Delivery & Lifecycle Information:

[TE Connectivity:](#)

[1-292271-0](#)